

CE CERTIFICATE

CE DECLARATION OF CONFORMITY

Excellent Systems A/S

Møllevej 2
8544 Mørke
Denmark
Tel.: +45 8637 7133

hereby declare under our sole responsibility that our products

Excellent Ramp System

Serial no:

12503, 12830, 12510, 12505, 12840, 12511, 12507, 12508, 12535, 12850, 12536, 12537, 12538, 12545, 12860, 12547, 15000, 15001, 15300, 12512, 12513, 12514, 12515, 12516, 12517, 12518, 12519, 12520, 12521, 12522, 12523, 12525, 12528, 12524, 12527, 12732, 12742, 15200, 15250, 12700, 12500, 12690, 12691, 12695, 12998, 12999, 15150, 15101, 15151, 12601, 12602, 12603, 12500, 12540, 12541, 12550, 12560, 12575, 12576, 12584, 12585, 12589, 12590, 12591, 12592, 12593, 12594, 12595, 12597, 12690, 12695, 12696, 12700, 12710, 12720, 12725, 12732, 12742, 15200, 15250, 15200, 15250, 17100, 17120, 17130, 17140, 11100, 11200, 12502, 12800, 12652, 12653, 12656, 12657, 12658, 12659, 12672, 12660, 12654, 12655, 12675, 12661, 12676, 12662, Kit0, Kit1, Kit2, Kit3, Kit4, Kit5, Kit Add-on1, Kit100, Kit101, Kit102, Kit103, Kit104, Kit Add-on100, Kit200, Kit201, Kit202, Kit203, Kit204, Kit Add-on200, Kit1S, Kit2S, Kit3S, Kit4S, Kit101S, Kit102S, Kit103S, Kit104S, Kit201S, Kit202S, Kit203S, Kit204S, Kit box0, Kit box1, Kit box2, Kit box3, Kit box4, Kit box200, 14000, 14500, 14100, 14125, 14150, 14200, Quickramp 004, Quickramp 006, Quickramp 008, Quickramp 010, Quickramp 012, Quickramp 014, Quickramp 016, Quickramp 020.

to which this declaration refers, conforms to the following directives and regulations according to **Medical Devices: General 93/42/EEC** and security tested by Danish Centre for Technical Aids for Rehabilitation and Education after

EN 12182:1998

DS 3028

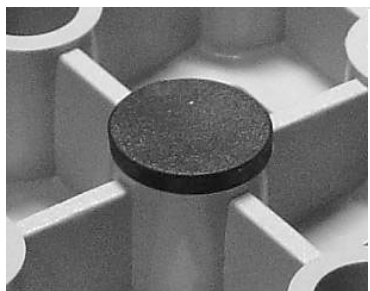


Jørgen Meyer
Excellent Testing Department

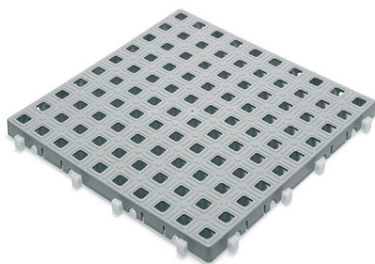


Ole Frederiksen
Managing Director

Images



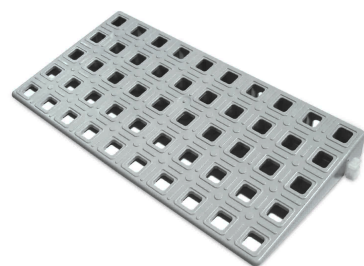
12500



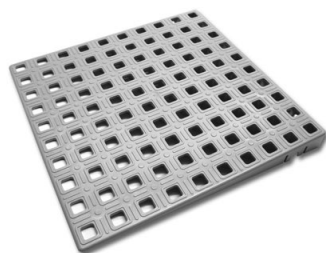
12503



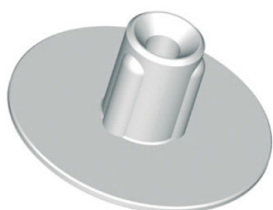
12505



12535



12545



12690



NIEUW!
GEPATENTEERD SYSTEEM,
IN HOOGTE VERSTELBAAR VAN
2 TOT 16 MM.

12696



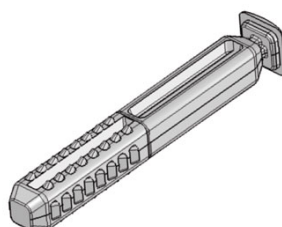
12700



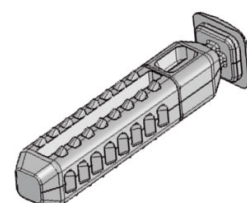
12732



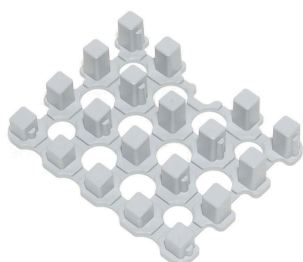
12742



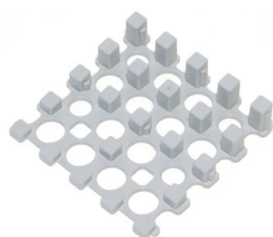
15200



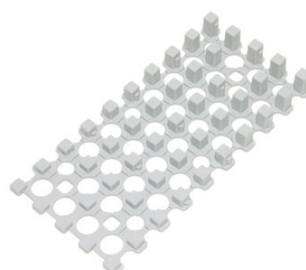
15250



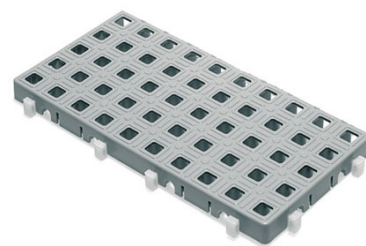
12840



12850



12860



12510