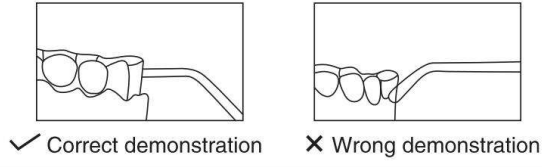


Warm tips for product use

Dental experts suggest that the first user should use the soft mode for one week, and then use the normal mode after adaptation. Press the switch button to use. The following points should be paid attention to when using:

- The flow direction is perpendicular to the teeth or gums;
- Move slowly along the teeth and clean them in order;
- The nozzle is aligned vertically;
- Thoroughly clean teeth, brackets, crowns and dentures.

For the first time, do not spray water directly along the periodontal pocket for a long time, so as not to cause gingival discomfort.



Put the nozzle into the mouth before turning on the switch, so that the water will not splash everywhere. In use, the gear gradually increases from weak to strong, and it is an adaptive stage to find the suitable gear that you can bear.

Routine maintenance

- If you need to clean this product, please wipe it with water or wet cloth, and then wipe the water stains on the surface with dry cloth or other dry paper towel.
- Do not immerse the product in water.
- Do not clean the product with hot water over 50 °C.
- Do not bend, stretch or twist the nozzle water pipe.
- It is recommended to replace the nozzle every 3 months.
- If you don't use this product for a long time, empty the water in the water tank and place it in a cool and dry place.

Fault diagnosis

Common problem	Possible causes	Solve the problem
Unable to work or power on	Newly purchased or not used for more than three months	Please charge for more than 4 hours before use
The water pressure is very low at work	Something in the nozzle is blocked Or the nozzle is deformed	Change the nozzle
It can only be used for a short time after charging	The battery is at the end of its life Insufficient charging time	Please contact customer service Please charge for more than 4 hours before use
When charging, the charging indicator does not light up or jumps disorderly	The power supply is not connected properly Adapter (charging head) mismatch	Please connect the power correctly Replace the adapter or plug it directly into the USB socket
Do not spray water when working	The product circuit is faulty New machine or idle for a period of time unused	Please contact customer service 1. Pull out the nozzle to flush the nozzle hole on the main body 2. Suck hard at the nozzle

Environmental protection instructions

Products used in this table
Portable electric tooth brush
Statement of hazardous substances
According to the requirements for identification of hazardous substances in electronic and electrical products (GB / T 26572-2011) (also known as China rohs2.0), the following parts list the names and contents of hazardous substances that may be contained in this product.

Part name	Harmful substances					
	(Pb)	(Hg)	(Cr(VI))	(PBB)	(PBDE)	
Plastic components	○	○	○	○	○	○
Hardware components	○	○	○	○	○	○
Container	○	○	○	○	○	○
Motor assembly	×	○	○	○	○	○
Battery	×	○	○	○	○	○
Data line	×	○	○	○	○	○
Circuit board	×	○	○	○	○	○

This form is compiled according to the rules of SJ / T11364
○ : indicates that the content of the hazardous substance in all homogeneous materials of the component is in GB / T26572-2011(IEC62321).
× : indicates that the content of the hazardous substance in at least one homogeneous material of the component exceeds the limit specified in GB/T26572. But in the table above " × " The reason why the content of the components exceeds the standard is that the industry has not yet completed the production Ripe alternative technology.

Environmental protection service life

The mark on the product body indicates that the service life of environmental protection is 10 years. The environmental protection service life of electronic and electrical products refers to the period when the toxic and harmful substances or elements contained in electronic and electrical products will not leak out or suddenly mutate, and the users of electronic and electrical products will not cause serious pollution to the environment or serious damage to human body and property when using the electronic and electrical products. During the period of environmental protection, please use the product according to the instructions. In order to better care for and protect the earth, when users no longer need this product or the life of the product is terminated, please comply with the relevant laws and regulations of the state on the recycling of waste electrical and electronic products, and hand it over to the local manufacturer with the recycling qualification recognized by the state for recycling.

Disposal of rechargeable battery

- The built-in rechargeable lithium battery of this product contains substances that may pollute the environment. When discarding this product, please do not put it together with general household garbage, but take out the battery.
- Be sure to turn off the power or cut off the power before decomposing the product and taking out the lithium battery.
- To take out the lithium battery, pry the buckle of the upper cover of the product, open the upper cover of the product, and then take out the lithium battery.
- The removed lithium batteries should be safely disposed and put into the battery recycling center designated by the government, which is conducive to environmental protection. Special tips: take out the battery only when discarding the product. Please make sure that the battery is exhausted before taking it out. Non professionals should not remove it.

Recovery

When discarding the recycled products, please do not throw them together with the general household garbage, but give them to the designated recycling center. Everyone is responsible for protecting the environment!

Quality Assessment

This is to ensure that the product is of good quality, reliable performance, safe and practical. In order to solve the customer's worries, the company is responsible for the quality and after-sales service, which can be handled with this card.

- If the main parts of the product break down during normal use within three months, repair and replace the parts free of charge.
- When repairing, you should bring the receipt and warranty card to confirm the warranty period.
- The warranty period is three months.

Be careful

- Abnormal use and man-made damage are not covered by the warranty.
- If the customer disassembles the machine by himself, the warranty will be cancelled.

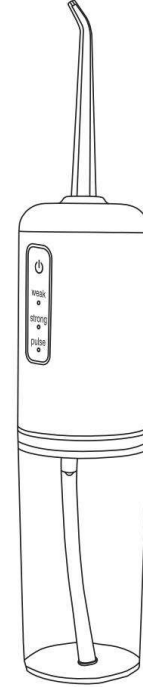
Date of purchase: _____
Place of purchase: _____

Certificate qualified

Test results: _____
examination clerk: _____
Inspection date: _____



Portable electric tooth flusher



instruction manual

Disclaimer: due to the iteration of product appearance, if there is any difference between the pattern in this manual and the actual product appearance, the actual product shall prevail.

Warning

- Do not use the product for any purpose other than oral cleaning.
- Do not use the nozzle to press the gum or teeth, so as not to damage the gums.
- Do not immerse the product in water to avoid product failure.
- Do not use the product in high temperature and humid environment.
- Do not use the power cord when it is damaged.

DANGER

- Please read this manual carefully before use to avoid injury or damage caused by improper operation.
- Do not disassemble the product without permission to avoid damage or electric shock.
- Do not use water above 40 °C to flush teeth in the water tank to avoid scalding.
- If the product falls into water accidentally during charging, please unplug the power plug and then take out the product, and then charge it after the water stains are completely dry.
- If the power cord or plug is damaged, replace the power adapter and use it again.
- Avoid placing the product at high temperature, do not put it into fire, and the battery may explode.

Matters needing attention

- Strong pulse water can clean up bacteria, dental stains, tartar and food residues in all parts of the mouth.
- Superfine water flow can clean gingival groove and deep crevices barrier free, and improve gingival health.
- It can effectively remove most of the stubborn dental plaque on the surface of teeth, and the effect is much better than that of traditional dental floss.
- Fast clean mouth: whether at home or eating out, it is the most effective way to quickly restore clean mouth.
- For orthodontic teeth, implant teeth, tooth veneer cleaning has a good effect.
- Help to develop a healthy habit of daily interdental cleaning, so that the teeth always keep fresh and clean.

Product utility

Be careful

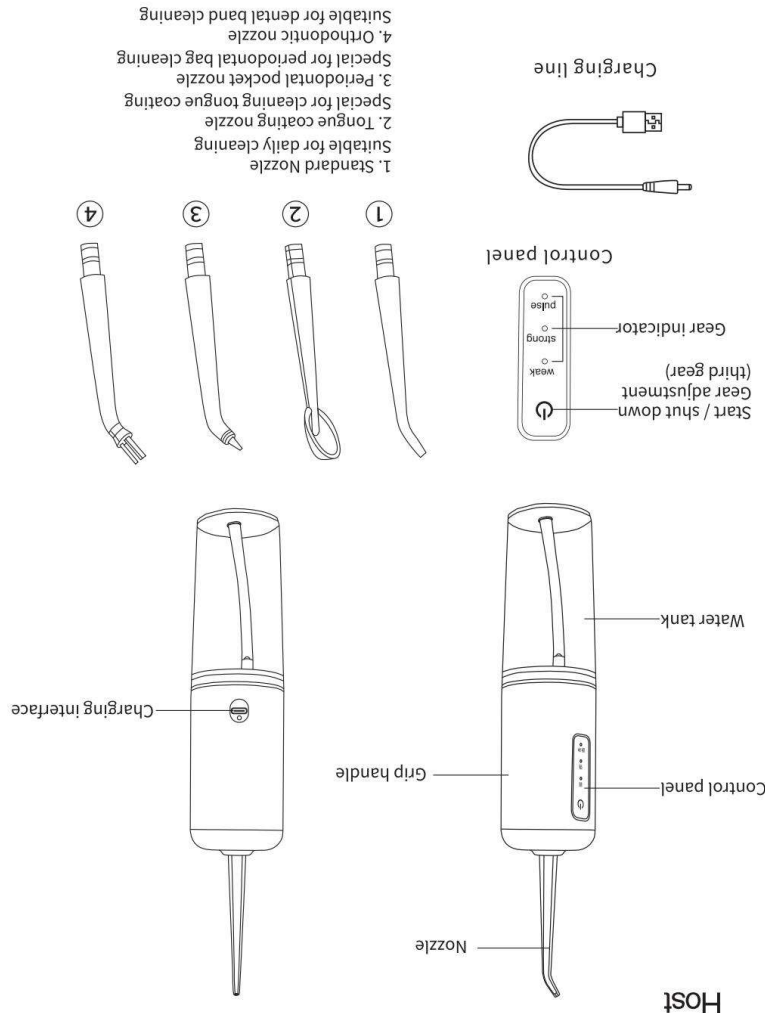
- Do not wash the damaged gum or bleeding place with strong gear continuously to prevent inflammation.
- Please adjust the scour intensity of pulse flow in real time according to the oral condition.
- Do not immerse the whole machine in water, which may cause product failure or complete damage.
- If you don't use this product for a long time, please make sure that the water tank is dry and free of water, and then store it to prevent the growth of bacteria.

Be careful

- Do not immerse the whole machine in water, which may cause product failure or complete damage.
- If you don't use this product for a long time, please make sure that the water tank is dry and free of water, and then store it to prevent the growth of bacteria.

Product parameters

Product model: 138
Net weight: 249g
Water tank volume: 226ml
Charging voltage: 5V
Charging current: 1A
Rated voltage: 3.7V
Rated power: 3.5W



- Standard Nozzle
- Tongue coating nozzle
- Special for cleaning tongue coating
- Periodontal pocket nozzle
- Special for periodontal bag cleaning
- Orthodontic nozzle
- Special for dental band cleaning

Use steps



Correct method of cleaning teeth

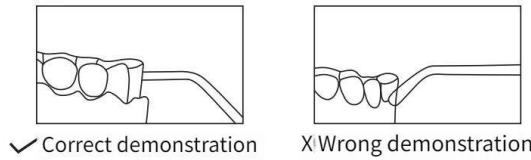
Choose a suitable gear, it is recommended to try it from the lowest gear and gradually find the most suitable gear. When cleaning teeth, put the nozzle into the mouth, aim at the teeth or gums, and open the mouth slightly, so that the water can flow out smoothly. After selecting a suitable gear, flush the gums in the same direction from the innermost (e.g. 1 or 4) until they reach the last tooth. Then turn over the nozzle and flush the gums in the same direction (e.g. 2 or 3) until they reach the gums of the last tooth. The washing sequence of the other row of teeth is the same as above.

Operation method

Press the key to start the machine briefly, and the default mode is weak, and the corresponding indicator light will be on. Press for 2 seconds to switch mode, mode switch to strong gear, and indicator light will also switch to corresponding indicator light. Press for 2 seconds to switch mode to pulse, and the indicator light will also switch to corresponding indicator light, and cycle in sequence. Press to turn on the key shutdown. The instrument will shut down automatically for 2 minutes. When the instrument battery is charged, three indicator lights flash in turn, and when full, the three indicators will be on for a long time.

Warm tips for product use

Dental experts suggest that the first user should use the soft mode for one week, and then use the normal mode after adaptation. Press the switch button to use. The following points should be paid attention to when using (a) The flow direction is perpendicular to the teeth or gums; (b) Move slowly along the teeth and clean them in order; (c) The nozzle is aligned vertically; (d) Thoroughly clean teeth, brackets, crowns and dentures. For the first time, do not spray water directly along the periodontal pocket for a long time, so as not to cause gingival discomfort.



Put the nozzle into the mouth before turning on the switch, so that the water will not splash. Teeth punching tip every where. In use, the gear gradually increases from weak to strong, and it is an adaptive stage to find the suitable gear that you can bear.

Routine maintenance

- A. If you need to clean this product, please wipe it with water or wet cloth, and then wipe the water stains on the surface with dry cloth or other dry paper towel. B. Do not immerse the product in water. C. Do not clean the product with hot water over 50 C. D. Do not bend, stretch or twist the nozzle water pipe. E. It is recommended to replace the nozzle every 3 months. Do not use this product for a long time, empty the water in the water tank and place it in a cool and dry place.

Fault diagnosis

Common problem	Possible causes	Solve the problem
Unable to work or power on. The water pressure is very low at work.	Newly purchased or not used for more than three months. Something in the nozzle is blocked. Or the nozzle is deformed.	Please charge for more than 4 hours before use. Change the nozzle.
It can only be used for a short time after charging.	The battery is at the end of its life. Insufficient charging time.	Please contact customer service. Please charge for more than 4 hours before use. Please connect the power correctly.
When charging, the charging indicator does not light up or jumps disorderly.	The power supply is not connected properly. Adapter (charging head) mismatch. The product circuit is faulty.	Replace the adapter or plug it directly into the USB socket. Please contact customer service.
Do not spray water when working.	New machine or idle for a period of time unused.	1. Pull out the nozzle to flush the nozzle hole on the main body. 2. Suck hard at the nozzle.

Environmental protection instructions

Products used in this table
Portable electric tooth punch
Statement of hazardous substances
According to the requirements for identification of hazardous substances in electronic and electrical products (GB / T 26572-2011) (also known as China rohs2.0), the following parts list the names and contents of hazardous substances that may be contained in this product.

Part name	Harmful substances					
	(Pb)	(Hg)	(Cr(VI))	(PBB)	(PBDE)	
Plastic components	○	○	○	○	○	○
Hardware components	○	○	○	○	○	○
Container	○	○	○	○	○	○
Motor assembly	×	○	○	○	○	○
Battery	×	○	○	○	○	○
Data line	×	○	○	○	○	○
Circuit board	×	○	○	○	○	○

This form is compiled according to the rules of SJ / t11364 O : : indicates that the content of the hazardous substance in all homogeneous materials of the component is in GB / t26572-2011 (IEC62321). X : indicates that the content of the hazardous substance in at least one homogeneous material of the component exceeds the limit specified in GB/T26572 But in the table above " x " The reason why the content of the components exceeds the standard is that the industry has not yet completed the production Ripe alternative technology.

10 Environmental protection service life

The mark on the product body indicates that the service life of environmental protection is 10 years. The environmental protection service life of electronic and electrical products refers to the period when the toxic and harmful substances or elements contained in electronic and electrical products will not leak out or suddenly mutate, and the users of electronic and electrical products will not cause serious pollution to the environment or serious damage to human body and property when using the electronic and electrical products. During the period of environmental protection, please use the product according to the instructions in order to better care for and protect the earth, when users no longer need this product or the life of the product is terminated, please comply with the relevant laws and regulations of the state on the recycling of waste electrical and electronic products, and hand it over to the local manufacturer with the recycling qualification recognized by the state for recycling.

Disposal of rechargeable battery

- The built-in rechargeable lithium battery of this product contains substances that may pollute the environment. When discarding this product, please do not put it together with general household garbage, but take out the battery.
- Be sure to turn off the power or cut off the power before decomposing the product and taking out the lithium battery.
- To take out the lithium battery, pry the buckle of the upper cover of the product, open the upper cover of the product, and then take out the lithium battery.
- The removed lithium batteries should be safely disposed of and put into the battery recycling center designated by the government, which is conducive to environmental protection. Special tips: take out the battery only when discarding the product. Please make sure that the battery is exhausted before taking it out. Non professionals should not remove it.

Recovery

When discarding the recycled products, please do not throw them together with the general household garbage, but give them to the designated recycling center. Everyone is responsible for protecting the environment!

Quality Assessment

This is to ensure that the product is of good quality, reliable performance, safe and practical. In order to solve the customer's worries, the company is responsible for the quality and after-sales service, which can be handled with this card
1. If the main parts of the product break down during normal use within three months, repair and replace the parts free of charge.
2. When repairing, you should bring the receipt and warranty card to confirm the warranty period.
3. The warranty period is three months.

Be careful

- Abnormal use and man-made damage are not covered by the warranty.
- If the customer disassembles the machine by himself, the warranty will be cancelled.

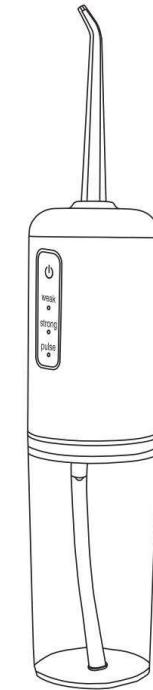
Date of purchase: _____
Place of purchase: _____

Certificate qualified

Test results: _____
examination clerk: _____
: _____
Inspection date: _____

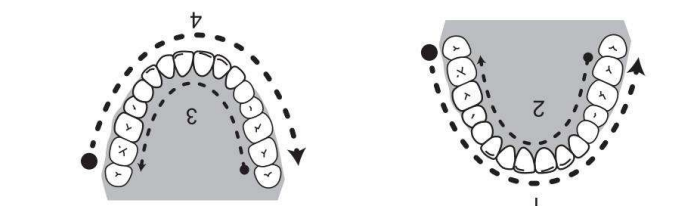


Portable electric tooth flusher



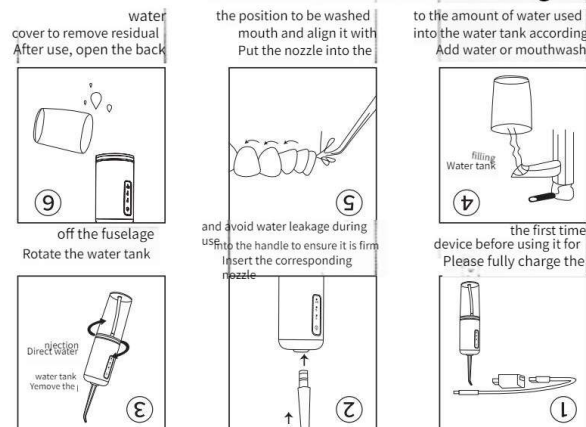
instruction manual

Disclaimer: due to the iteration of product appearance, if there is any difference between the pattern in this manual and the actual product appearance, the actual product shall prevail.



The washing sequence of the other row of teeth is the same as above. the gums in the same direction (e.g. 2 or 3) until they reach the gums of the last tooth. (e.g. 1 or 4) until they reach the gums of the last tooth. Then turn over the nozzle and flush the teeth or gums, and open the mouth slightly, so that the water can flow out smoothly. find the most suitable gear. When cleaning teeth, put the nozzle into the mouth, aim at Choose a suitable gear. It is recommended to try it from the lowest gear and gradually

Correct method of cleaning teeth

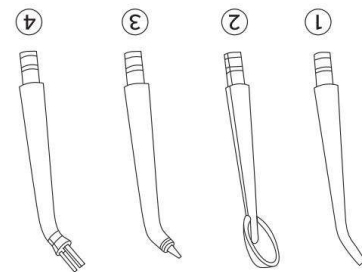


Use steps

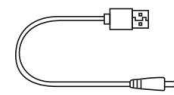
- When the instrument battery is charged, three indicator lights flash in turn, and when full, the three indicators will be on for a long time.
- Press to turn on the key shutdown. The instrument will shut down automatically for 2 minutes.
- Press for 2 seconds to switch mode to pulse, and the indicator light will also switch to corresponding indicator light, and cycle in sequence.
- Press for 2 seconds to switch mode, mode switch to strong gear, and indicator light will also switch to corresponding indicator light.
- Press the key to start the machine briefly, and the default mode is weak, and the corresponding indicator light will be on.

Operation method

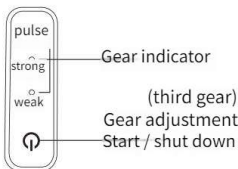
- Suitable for dental band cleaning
- 4. Orthodontic nozzle
- Special for periodontal bag cleaning. Periodontal pocket nozzle
- Special for cleaning tongue coating
- 2. Tongue coating nozzle
- Suitable for daily cleaning
- 1. Standard Nozzle



Charging line



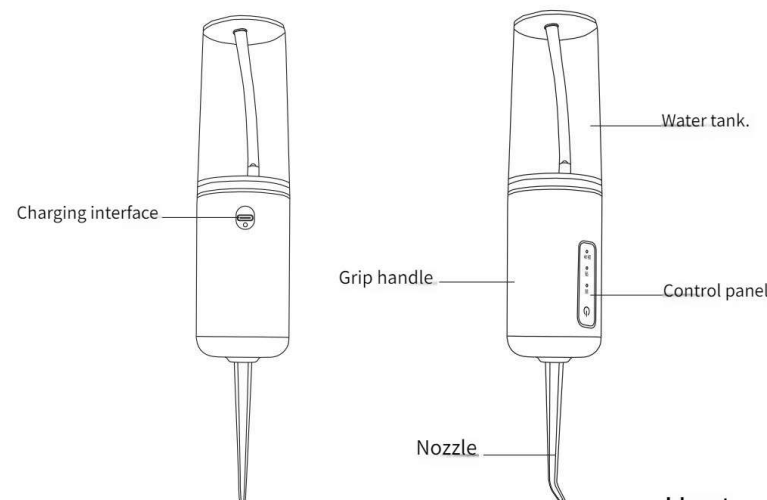
Control panel



Rated power: 3.5W
Rated voltage: 3.7V ---
Charging current:
Charging voltage: 5V---

Water tank volume: 226ml
Net weight:
Product model: 138

Product parameters



Host

Structure of tooth punch

- of bacteria.
- water tank is dry and free of water, and then store it to prevent the growth
- B. If you don't use this product for a long time, please make sure that the failure or complete damage.
- A. Do not immerse the whole machine in water, which may cause product
- Be careful
- to the oral condition.
- B. Please adjust the scour intensity of pulse flow in real time according continuously to prevent inflammation.
- A. Do not wash the damaged gum or bleeding place with strong gear
- Be careful
- first and use it after confirmation.
- the past 2 months or suffered from oral problems, please consult the doctor
- E. Patients with periodontal disease or those who have had oral surgery in a toy.
- D. Please put it out of the reach of children and infants, and do not use it as users.
- C. If children, old people or operators want to use this product, please make
- B. Some functional mouthwashes may be corrosive. Please confirm the
- A. Do not use this product without the installation of nozzle.

! Be careful!

- E. Do not use the power cord when it is damaged.
- D. Do not use the product in high temperature and humid environment.
- C. Do not immerse the product in water to avoid product failure.
- the
- B. Do not use the nozzle to press the gum or teeth, so as not to damage
- A. Do not use the product for any purpose other than oral cleaning.

Warning

- may explode.
- F. Avoid placing the product at high temperature, do not put it into fire, and the battery
- E. If the power cord or plug is damaged, replace the power adapter and use it again.
- completely dry.
- plug and then take out the product, and then charge it after the water stains are
- D. If the product falls into water accidentally during charging, please unplug the power
- C. Do not use water above 40 °C to flush teeth in the water tank to avoid scalding.
- shock.
- B. Do not disassemble the product without permission to avoid damage or electric
- improper operation.
- A. Please read this manual carefully before use to avoid injury or damage caused by

! DANGER!

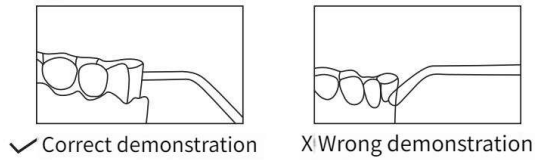
Matters needing attention

- keep fresh and clean.
- F. Help to develop a healthy habit of daily interdental cleaning, so that the teeth always
- E. For orthodontic teeth, implant teeth, tooth veneer cleaning has a good effect.
- restore clean mouth.
- D. Fast clean mouth: whether at home or eating out, it is the most effective way to quickly
- and the effect is much better than that of traditional dental floss.
- C. It can effectively remove most of the stubborn dental plaque on the surface of teeth,
- improve gingival health.
- B. Superfine water flow can clean gingival groove and deep crevices barrier free, and
- all parts of the mouth.
- A. Strong pulse water can clean up bacteria, dental stains, tartar and food residues in

Product utility

Warm tips for product use

Dental experts suggest that the first user should use the soft mode for one week, and then use the normal mode after adaptation. Press the switch button to use. The following points should be paid attention to when using: (a) The flow direction is perpendicular to the teeth or gums; (b) Move slowly along the teeth and clean them in order; (c) The nozzle is aligned vertically; (d) Thoroughly clean teeth, brackets, crowns and dentures. For the first time, do not spray water directly along the periodontal pocket for a long time, so as not to cause gingival discomfort.



Put the nozzle into the mouth before turning on the switch, so that the water will not splash. Teeth punching tip everywhere. In use, the gear gradually increases from weak to strong, and it is an adaptive stage to find the suitable gear that you can bear.

Routine maintenance

- A. If you need to clean this product, please wipe it with water or wet cloth, and then wipe the water stains on the surface with dry cloth or other dry paper towel. B. Do not immerse the product in water. C. Do not clean the product with hot water over 50 C. D. Do not bend, stretch or twist the nozzle water pipe. E. It is recommended to replace the nozzle every 3 months. Do not use this product for a long time, empty the water in the water tank and place it in a cool and dry place.

Fault diagnosis

Common problem	Possible causes	Solve the problem
Unable to work or power on. The water pressure is very low at work.	Newly purchased or not used for more than three months. Something in the nozzle is blocked.	Please charge for more than 4 hours before use. Change the nozzle.
It can only be used for a short time after charging.	The nozzle is deformed at the end of the nozzle. The battery is insufficient charging time.	Please contact customer service. Please charge for more than 4 hours before use. Please connect the power correctly.
When charging, the charging indicator does not light up or jumps disorderly.	The power supply is not connected properly. Adapter (charging head) mismatch. The product circuit is faulty.	Replace the adapter or plug it directly into the USB socket. Please contact customer service.
Do not spray water when working.	New machine or idle for a period of time unused.	1. Pull out the nozzle to flush the nozzle hole on the main body. 2. Suck hard at the nozzle.

Environmental protection instructions

Products used in this table
Portable electric tooth punch
Statement of hazardous substances
According to the requirements for identification of hazardous substances in electronic and electrical products (GB / T 26572-2011) (also known as China rohs2.0), the following parts list the names and contents of hazardous substances that may be contained in this product.

Part name	Harmful substances					
	(Pb)	(Hg)	(Cr(VI))	(PBB)	(PBDE)	
Plastic components	○	○	○	○	○	○
Hardware components	○	○	○	○	○	○
Container	○	○	○	○	○	○
Motor assembly	×	○	○	○	○	○
Battery	×	○	○	○	○	○
Data line	×	○	○	○	○	○
Circuit board	×	○	○	○	○	○

This form is compiled according to the rules of SJ / t11364 O : : indicates that the content of the hazardous substance in all homogeneous materials of the component is in GB / t26572-2011 (IEC62321).
x : indicates that the content of the hazardous substance in at least one homogeneous material of the component exceeds the limit specified in GB/T26572. But in the table above " x " The reason why the content of the components exceeds the standard is that the industry has not yet completed the production Ripe alternative technology.

10 Environmental protection service life

The mark on the product body indicates that the service life of environmental protection is 10 years. The environmental protection service life of electronic and electrical products refers to the period when the toxic and harmful substances or elements contained in electronic and electrical products will not leak out or suddenly mutate, and the users of electronic and electrical products will not cause serious pollution to the environment or serious damage to human body and property when using the electronic and electrical products. During the period of environmental protection, please use the product according to the instructions in order to better care for and protect the earth, when users no longer need this product or the life of the product is terminated, please comply with the relevant laws and regulations of the state on the recycling of waste electrical and electronic products, and hand it over to the local manufacturer with the recycling qualification recognized by the state for recycling.

Disposal of rechargeable battery

- The built-in rechargeable lithium battery of this product contains substances that may pollute the environment. When discarding this product, please do not put it together with general household garbage, but take out the battery.
- Be sure to turn off the power or cut off the power before decomposing the product and taking out the lithium battery.
- To take out the lithium battery, pry the buckle of the upper cover of the product, open the upper cover of the product, and then take out the lithium battery.
- The removed lithium batteries should be safely disposed of or put into the battery recycling center designated by the government, which is conducive to environmental protection. Special tips: take out the battery only when discarding the product. Please make sure that the battery is exhausted before taking it out. Non professionals should not remove it.

Recovery

When discarding the recycled products, please do not throw them together with the general household garbage, but give them to the designated recycling center. Everyone is responsible for protecting the environment!

Quality Assessment

This is to ensure that the product is of good quality, reliable performance, safe and practical. In order to solve the customer's worries, the company is responsible for the quality and after-sales service, which can be handled with this card

- If the main parts of the product break down during normal use within three months, repair and replace the parts free of charge.
- When repairing, you should bring the receipt and warranty card to confirm the warranty period.
- The warranty period is three months.

Be careful

- Abnormal use and man-made damage are not covered by the warranty.
- If the customer disassembles the machine by himself, the warranty will be cancelled.

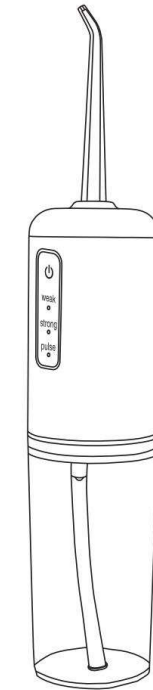
Date of purchase: _____
Place of purchase: _____

Certificate qualified

Test results: _____
examination clerk: _____
: _____
Inspection date: _____

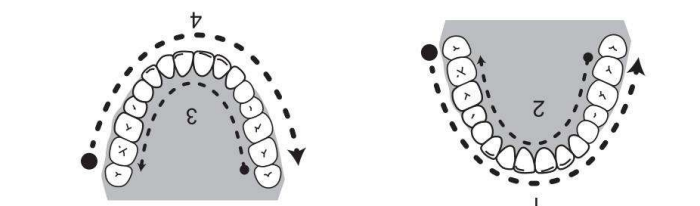


Portable electric tooth flusher



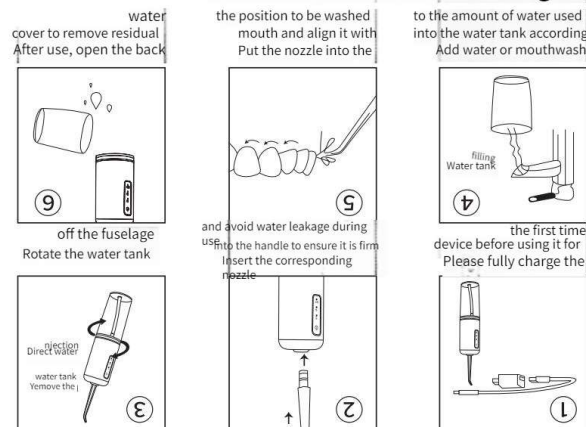
instruction manual

Disclaimer: due to the iteration of product appearance, if there is any difference between the pattern in this manual and the actual product appearance, the actual product shall prevail.



The washing sequence of the other row of teeth is the same as above. the gums in the same direction (e.g. 2 or 3) until they reach the gums of the last tooth. (e.g. 1 or 4) until they reach the gums of the last tooth. Then turn over the nozzle and flush the teeth or gums, and open the mouth slightly, so that the water can flow out smoothly. find the most suitable gear. When cleaning teeth, put the nozzle into the mouth, aim at Choose a suitable gear. It is recommended to try it from the lowest gear and gradually

Correct method of cleaning teeth

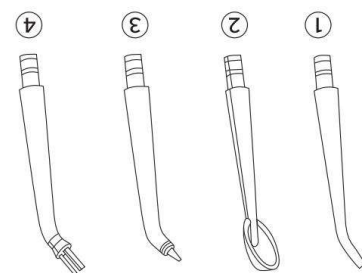


Use steps

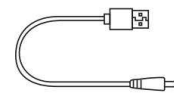
- When the instrument battery is charged, three indicator lights flash in turn, and when full, the three indicators will be on for a long time.
- Press to turn on the key shutdown. The instrument will shut down automatically for 2 minutes.
- Press for 2 seconds to switch mode to pulse, and the indicator light will also switch to corresponding indicator light, and cycle in sequence.
- Press for 2 seconds to switch mode, mode switch to strong gear, and indicator light will also switch to corresponding indicator light.
- Press the key to start the machine briefly, and the default mode is weak, and the corresponding indicator light will be on.

Operation method

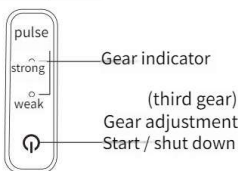
- Suitable for dental band cleaning
- 4. Orthodontic nozzle
- Special for periodontal bag cleaning
- Periodontal pocket nozzle
- Special for cleaning tongue coating
- 2. Tongue coating nozzle
- Suitable for daily cleaning
- 1. Standard Nozzle



Charging line



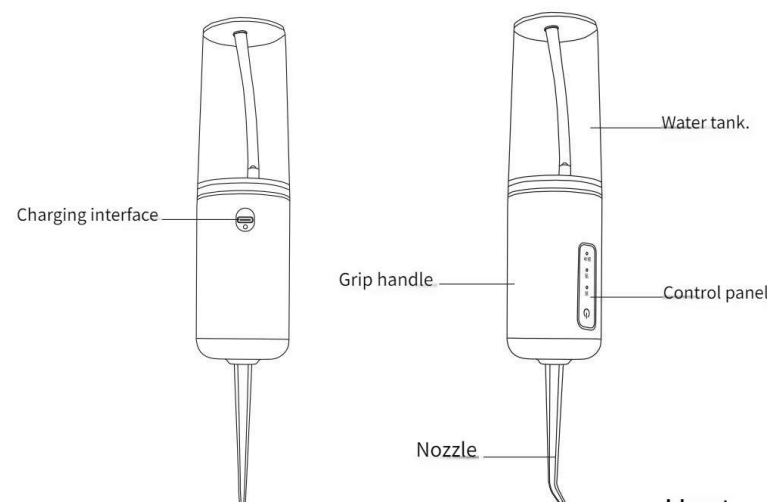
Control panel



Rated power: 3.5W
Rated voltage: 3.7V ---
Charging current:
Charging voltage: 5V---

Water tank volume: 226ml
Net weight:
Product model: 138

Product parameters



Host

Structure of tooth punch

of bacteria.
water tank is dry and free of water, and then store it to prevent the growth
B. If you don't use this product for a long time, please make sure that the failure or complete damage.
A. Do not immerse the whole machine in water, which may cause product

Be careful

to the oral condition.
B. Please adjust the scour intensity of pulse flow in real time according continuously to prevent inflammation.
A. Do not wash the damaged gum or bleeding place with strong gear

Be careful

first and use it after confirmation.
the past 2 months or suffered from oral problems, please consult the doctor
E. Patients with periodontal disease or those who have had oral surgery in a toy.
D. Please put it out of the reach of children and infants, and do not use it as users.
C. If children, old people or operators want to use this product, please make
B. Some functional mouthwashes may be corrosive. Please confirm the
A. Do not use this product without the installation of nozzle.

! Be careful!

- E. Do not use the power cord when it is damaged.
- D. Do not use the product in high temperature and humid environment.
- C. Do not immerse the product in water to avoid product failure.
- the
- B. Do not use the nozzle to press the gum or teeth, so as not to damage
- A. Do not use the product for any purpose other than oral cleaning.

Warning

- may explode.
- F. Avoid placing the product at high temperature, do not put it into fire, and the battery
- E. If the power cord or plug is damaged, replace the power adapter and use it again.
- completely dry.
- plug and then take out the product, and then charge it after the water stains are
- D. If the product falls into water accidentally during charging, please unplug the power
- C. Do not use water above 40 °C to flush teeth in the water tank to avoid scalding.
- shock.
- B. Do not disassemble the product without permission to avoid damage or electric
- improper operation.
- A. Please read this manual carefully before use to avoid injury or damage caused by

! DANGER!

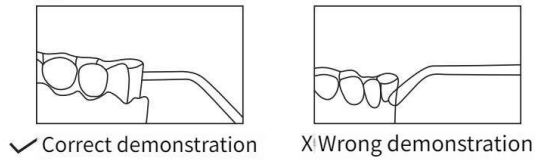
Matters needing attention

- keep fresh and clean.
- F. Help to develop a healthy habit of daily interdental cleaning, so that the teeth always
- E. For orthodontic teeth, implant teeth, tooth veneer cleaning has a good effect.
- restore clean mouth.
- D. Fast clean mouth: whether at home or eating out, it is the most effective way to quickly
- and the effect is much better than that of traditional dental floss.
- C. It can effectively remove most of the stubborn dental plaque on the surface of teeth,
- improve gingival health.
- B. Superfine water flow can clean gingival groove and deep crevices barrier free, and
- all parts of the mouth.
- A. Strong pulse water can clean up bacteria, dental stains, tartar and food residues in

Product utility

Warm tips for product use

Dental experts suggest that the first user should use the soft mode for one week, and then use the normal mode after adaptation. Press the switch button to use. The following points should be paid attention to when using: (a) The flow direction is perpendicular to the teeth or gums; (b) Move slowly along the teeth and clean them in order; (c) The nozzle is aligned vertically; (d) Thoroughly clean teeth, brackets, crowns and dentures. For the first time, do not spray water directly along the periodontal pocket for a long time, so as not to cause gingival discomfort.



Put the nozzle into the mouth before turning on the switch, so that the water will not splash. Teeth punching tip everywhere. In use, the gear gradually increases from weak to strong, and it is an adaptive stage to find the suitable gear that you can bear.

Routine maintenance

- A. If you need to clean this product, please wipe it with water or wet cloth, and then wipe the water stains on the surface with dry cloth or other dry paper towel. B. Do not immerse the product in water. C. Do not clean the product with hot water over 50 C. D. Do not bend, stretch or twist the nozzle water pipe. E. It is recommended to replace the nozzle every 3 months. Do not use this product for a long time, empty the water in the water tank and place it in a cool and dry place.

Fault diagnosis

Common problem	Possible causes	Solve the problem
Unable to work or power on. The water pressure is very low at work.	Newly purchased or not used for more than three months. Something in the nozzle is blocked.	Please charge for more than 4 hours before use. Change the nozzle.
It can only be used for a short time after charging.	The nozzle is deformed at the end of the nozzle. The battery is insufficient charging time.	Please contact customer service. Please charge for more than 4 hours before use. Please connect the power correctly.
When charging, the charging indicator does not light up or jumps disorderly.	The power supply is not connected properly. Adapter (charging head) mismatch. The product circuit is faulty.	Replace the adapter or plug it directly into the USB socket. Please contact customer service.
Do not spray water when working.	New machine or idle for a period of time unused.	1. Pull out the nozzle to flush the nozzle hole on the main body. 2. Suck hard at the nozzle.

Environmental protection instructions

Products used in this table
Portable electric tooth punch
Statement of hazardous substances
According to the requirements for identification of hazardous substances in electronic and electrical products (GB / T 26572-2011) (also known as China rohs2.0), the following parts list the names and contents of hazardous substances that may be contained in this product.

Part name	Harmful substances					
	(Pb)	(Hg)	(Cr(VI))	(PBB)	(PBDE)	
Plastic components	○	○	○	○	○	○
Hardware components	○	○	○	○	○	○
Container	○	○	○	○	○	○
Motor assembly	×	○	○	○	○	○
Battery	×	○	○	○	○	○
Data line	×	○	○	○	○	○
Circuit board	×	○	○	○	○	○

This form is compiled according to the rules of SJ / t11364 O : : indicates that the content of the hazardous substance in all homogeneous materials of the component is in GB / t26572-2011 (IEC62321).
x : indicates that the content of the hazardous substance in at least one homogeneous material of the component exceeds the limit specified in GB/T26572. But in the table above " x " The reason why the content of the components exceeds the standard is that the industry has not yet completed the production Ripe alternative technology.

10 Environmental protection service life
The mark on the product body indicates that the service life of environmental protection is 10 years. The environmental protection service life of electronic and electrical products refers to the period when the toxic and harmful substances or elements contained in electronic and electrical products will not leak out or suddenly mutate, and the users of electronic and electrical products will not cause serious pollution to the environment or serious damage to human body and property when using the electronic and electrical products. During the period of environmental protection, please use the product according to the instructions in order to better care for and protect the earth, when users no longer need this product or the life of the product is terminated, please comply with the relevant laws and regulations of the state on the recycling of waste electrical and electronic products, and hand it over to the local manufacturer with the recycling qualification recognized by the state for recycling.

Disposal of rechargeable battery
1. The built-in rechargeable lithium battery of this product contains substances that may pollute the environment. When discarding this product, please do not put it together with general household garbage, but take out the battery.
2. Be sure to turn off the power or cut off the power before decomposing the product and taking out the lithium battery.
3. To take out the lithium battery, pry the buckle of the upper cover of the product, open the upper cover of the product, and then take out the lithium battery.
4: The removed lithium batteries should be safely disposed of or put into the battery recycling center designated by the government, which is conducive to environmental protection. Special tips: take out the battery only when discarding the product. Please make sure that the battery is exhausted before taking it out. Non professionals should not remove it.

Recovery

When discarding the recycled products, please do not throw them together with the general household garbage, but give them to the designated recycling center. Everyone is responsible for protecting the environment!

Quality Assessment

This is to ensure that the product is of good quality, reliable performance, safe and practical. In order to solve the customer's worries, the company is responsible for the quality and after-sales service, which can be handled with this card.
1. If the main parts of the product break down during normal use within three months, repair and replace the parts free of charge.
2. When repairing, you should bring the receipt and warranty card to confirm the warranty period.
3. The warranty period is three months.

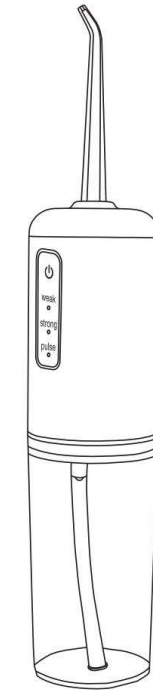
Be careful
1. Abnormal use and man-made damage are not covered by the warranty.
2. If the customer disassembles the machine by himself, the warranty will be cancelled.
Date of purchase: _____
Place of purchase: _____

Certificate qualified

Test results: _____
examination clerk: _____
: _____
Inspection date: _____

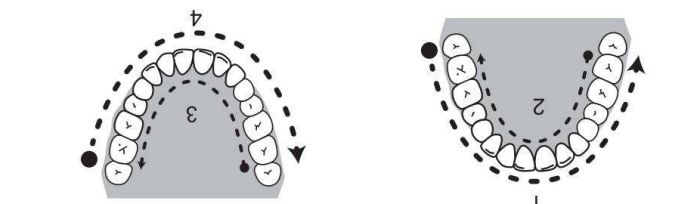


Portable electric tooth flusher



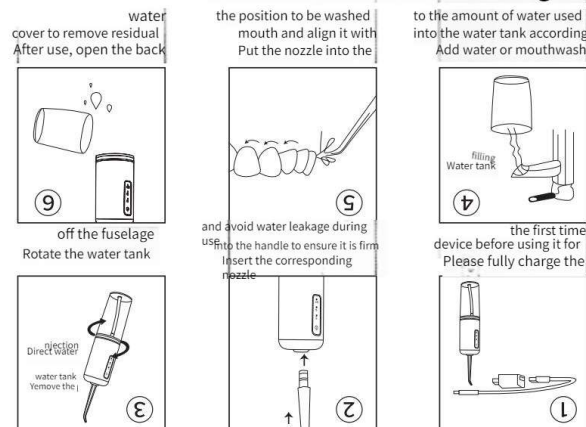
instruction manual

Disclaimer: due to the iteration of product appearance, if there is any difference between the pattern in this manual and the actual product appearance, the actual product shall prevail.



The washing sequence of the other row of teeth is the same as above. the gums in the same direction (e.g. 2 or 3) until they reach the gums of the last tooth. (e.g. 1 or 4) until they reach the gums of the last tooth. Then turn over the nozzle and flush the teeth or gums, and open the mouth slightly, so that the water can flow out smoothly. find the most suitable gear. When cleaning teeth, put the nozzle into the mouth, aim at Choose a suitable gear. It is recommended to try it from the lowest gear and gradually.

Correct method of cleaning teeth

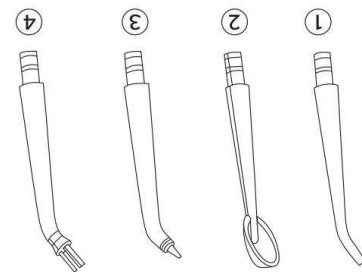


Use steps

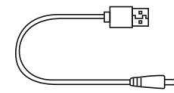
- When the instrument battery is charged, three indicator lights flash in turn, and when full, the three indicators will be on for a long time.
- Press to turn on the key shutdown. The instrument will shut down automatically for 2 minutes.
- Press for 2 seconds to switch mode to pulse, and the indicator light will also switch to corresponding indicator light, and cycle in sequence.
- Press for 2 seconds to switch mode, mode switch to strong gear, and indicator light will also switch to corresponding indicator light.
- Press the key to start the machine briefly, and the default mode is weak, and the corresponding indicator light will be on.

Operation method

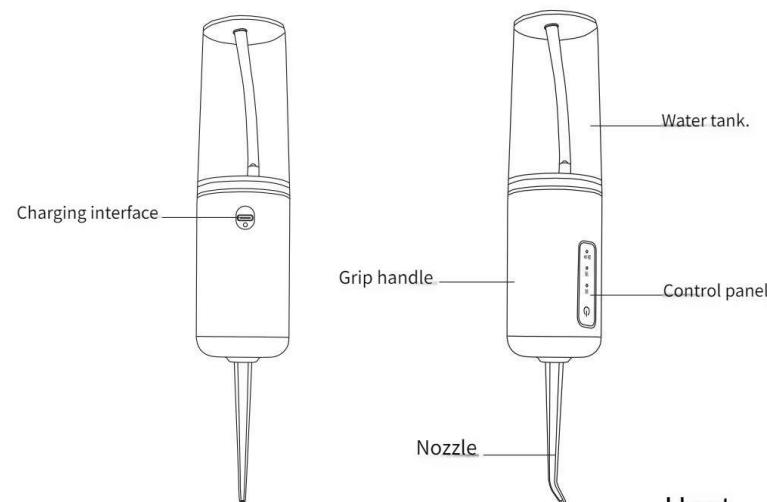
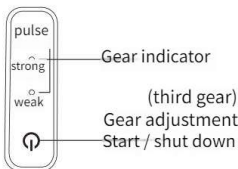
Suitable for dental band cleaning
4. Orthodontic nozzle
Special for periodontal bag cleaning. Periodontal pocket nozzle
Special for cleaning tongue coating
2. Tongue coating nozzle
Suitable for daily cleaning
1. Standard Nozzle



Charging line



Control panel



Host

Structure of tooth punch

Rated power: 3.5W
Rated voltage: 3.7V ---
Charging current:
Charging voltage: 5V---

Water tank volume: 226ml
Net weight:
Product model: 138

Product parameters

of bacteria.
water tank is dry and free of water, and then store it to prevent the growth.
B. If you don't use this product for a long time, please make sure that the failure or complete damage.
A. Do not immerse the whole machine in water, which may cause product damage.
Be careful
to the oral condition.
B. Please adjust the scour intensity of pulse flow in real time according continuously to prevent inflammation.
A. Do not wash the damaged gum or bleeding place with strong gear.
Be careful

first and use it after confirmation.
the past 2 months or suffered from oral problems, please consult the doctor.
E: Patients with periodontal disease or those who have had oral surgery in a toy.
D. Please put it out of the reach of children and infants, and do not use it as users.
C. If children, old people or operators want to use this product, please make use of them indiscriminately.
B. Some functional mouthwashes may be corrosive. Please confirm the A. Do not use this product without the installation of nozzle.
Be careful

- E. Do not use the power cord when it is damaged.
- D. Do not use the product in high temperature and humid environment.
- C. Do not immerse the product in water to avoid product failure.
- the gums.
- B. Do not use the nozzle to press the gum or teeth, so as not to damage the gums.
- A. Do not use the product for any purpose other than oral cleaning.

Warning

- may explode.
- F. Avoid placing the product at high temperature, do not put it into fire, and the battery E. If the power cord or plug is damaged, replace the power adapter and use it again.
- completely dry.
- plug and then take out the product, and then charge it after the water stains are D. If the product falls into water accidentally during charging, please unplug the power C. Do not use water above 40 °C to flush teeth in the water tank to avoid scalding.
- shock.
- B. Do not disassemble the product without permission to avoid damage or electric improper operation.
- A. Please read this manual carefully before use to avoid injury or damage caused by

! DANGER!

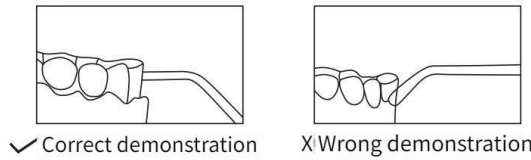
Matters needing attention

- keep fresh and clean.
- F. Help to develop a healthy habit of daily interdental cleaning, so that the teeth always E: For orthodontic teeth, implant teeth, tooth veneer cleaning has a good effect.
- restore clean mouth.
- D. Fast clean mouth: whether at home or eating out, it is the most effective way to quickly and the effect is much better than that of traditional dental floss.
- C. It can effectively remove most of the stubborn dental plaque on the surface of teeth, improve gingival health.
- B. Superfine water flow can clean gingival groove and deep crevices barrier free, and all parts of the mouth.
- A. Strong pulse water can clean up bacteria, dental stains, tartar and food residues in

Product utility

Warm tips for product use

Dental experts suggest that the first user should use the soft mode for one week, and then use the normal mode after adaptation. Press the switch button to use. The following points should be paid attention to when using: (a) The flow direction is perpendicular to the teeth or gums; (b) Move slowly along the teeth and clean them in order; (c) The nozzle is aligned vertically; (d) Thoroughly clean teeth, brackets, crowns and dentures. For the first time, do not spray water directly along the periodontal pocket for a long time, so as not to cause gingival discomfort.



Put the nozzle into the mouth before turning on the switch, so that the water will not splash. Teeth punching tip everywhere. In use, the gear gradually increases from weak to strong, and it is an adaptive stage to find the suitable gear that you can bear.

Routine maintenance

- A. If you need to clean this product, please wipe it with water or wet cloth, and then wipe the water stains on the surface with dry cloth or other dry paper towel. B. Do not immerse the product in water. C. Do not clean the product with hot water over 50 C. D. Do not bend, stretch or twist the nozzle water pipe. E. It is recommended to replace the nozzle every 3 months. Do not use this product for a long time, empty the water in the water tank and place it in a cool and dry place.

Fault diagnosis

Common problem	Possible causes	Solve the problem
Unable to work or power on. The water pressure is very low at work.	Newly purchased or not used for more than three months. Something in the nozzle is blocked.	Please charge for more than 4 hours before use. Change the nozzle.
It can only be used for a short time after charging.	The nozzle is deformed at the end of the nozzle. The battery is insufficient charging time.	Please contact customer service. Please charge for more than 4 hours before use. Please connect the power correctly.
When charging, the charging indicator does not light up or jumps disorderly.	The power supply is not connected properly. Adapter (charging head) mismatch. The product circuit is faulty.	Replace the adapter or plug it directly into the USB socket. Please contact customer service.
Do not spray water when working.	New machine or idle for a period of time unused.	1. Pull out the nozzle to flush the nozzle hole on the main body. 2. Suck hard at the nozzle.

Environmental protection instructions

Products used in this table
Portable electric tooth punch
Statement of hazardous substances
According to the requirements for identification of hazardous substances in electronic and electrical products (GB / T 26572-2011) (also known as China rohs2.0), the following parts list the names and contents of hazardous substances that may be contained in this product.

Part name	Harmful substances					
	(Pb)	(Hg)	(Cr(VI))	(PBB)	(PBDE)	
Plastic components	○	○	○	○	○	○
Hardware components	○	○	○	○	○	○
Container	○	○	○	○	○	○
Motor assembly	×	○	○	○	○	○
Battery	×	○	○	○	○	○
Data line	×	○	○	○	○	○
Circuit board	×	○	○	○	○	○

This form is compiled according to the rules of SJ / t11364 O : : indicates that the content of the hazardous substance in all homogeneous materials of the component is in GB / t26572-2011 (IEC62321).
x : indicates that the content of the hazardous substance in at least one homogeneous material of the component exceeds the limit specified in GB/T26572. But in the table above " x " The reason why the content of the components exceeds the standard is that the industry has not yet completed the production Ripe alternative technology.

10 Environmental protection service life

The mark on the product body indicates that the service life of environmental protection is 10 years. The environmental protection service life of electronic and electrical products refers to the period when the toxic and harmful substances or elements contained in electronic and electrical products will not leak out or suddenly mutate, and the users of electronic and electrical products will not cause serious pollution to the environment or serious damage to human body and property when using the electronic and electrical products. During the period of environmental protection, please use the product according to the instructions in order to better care for and protect the earth, when users no longer need this product or the life of the product is terminated, please comply with the relevant laws and regulations of the state on the recycling of waste electrical and electronic products, and hand it over to the local manufacturer with the recycling qualification recognized by the state for recycling.

Disposal of rechargeable battery

- The built-in rechargeable lithium battery of this product contains substances that may pollute the environment. When discarding this product, please do not put it together with general household garbage, but take out the battery.
- Be sure to turn off the power or cut off the power before decomposing the product and taking out the lithium battery.
- To take out the lithium battery, pry the buckle of the upper cover of the product, open the upper cover of the product, and then take out the lithium battery.
- The removed lithium batteries should be safely disposed of or put into the battery recycling center designated by the government, which is conducive to environmental protection. Special tips: take out the battery only when discarding the product. Please make sure that the battery is exhausted before taking it out. Non professionals should not remove it.

Recovery

When discarding the recycled products, please do not throw them together with the general household garbage, but give them to the designated recycling center. Everyone is responsible for protecting the environment!

Quality Assessment

This is to ensure that the product is of good quality, reliable performance, safe and practical. In order to solve the customer's worries, the company is responsible for the quality and after-sales service, which can be handled with this card.
1. If the main parts of the product break down during normal use within three months, repair and replace the parts free of charge.
2. When repairing, you should bring the receipt and warranty card to confirm the warranty period.
3. The warranty period is three months.

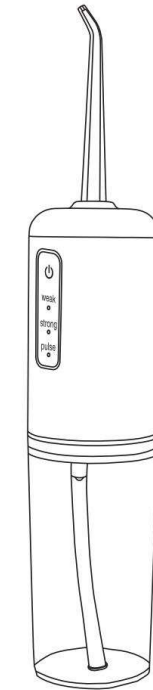
Be careful
1. Abnormal use and man-made damage are not covered by the warranty.
2. If the customer disassembles the machine by himself, the warranty will be cancelled.
Date of purchase: _____
Place of purchase: _____

Certificate qualified

Test results: _____
examination clerk: _____
: _____
Inspection date: _____

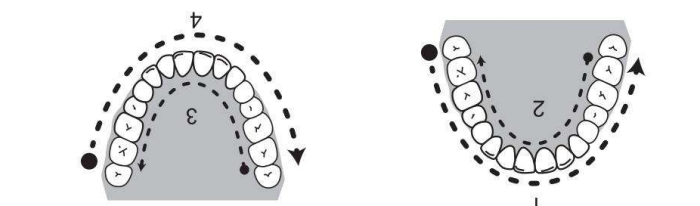


Portable electric tooth flusher



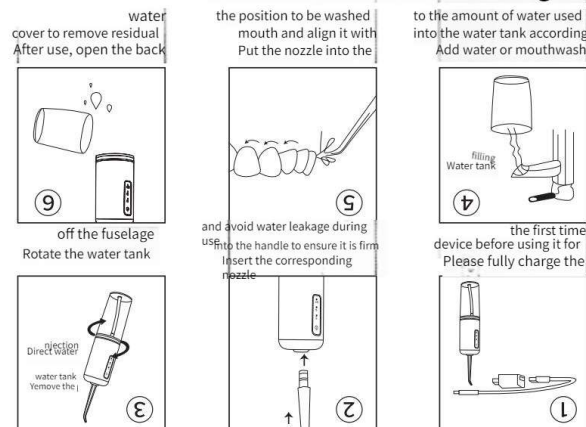
instruction manual

Disclaimer: due to the iteration of product appearance, if there is any difference between the pattern in this manual and the actual product appearance, the actual product shall prevail.



The washing sequence of the other row of teeth is the same as above. the gums in the same direction (e.g. 2 or 3) until they reach the gums of the last tooth. (e.g. 1 or 4) until they reach the gums of the last tooth. Then turn over the nozzle and flush the teeth or gums, and open the mouth slightly, so that the water can flow out smoothly. find the most suitable gear. When cleaning teeth, put the nozzle into the mouth, aim at Choose a suitable gear. It is recommended to try it from the lowest gear and gradually.

Correct method of cleaning teeth

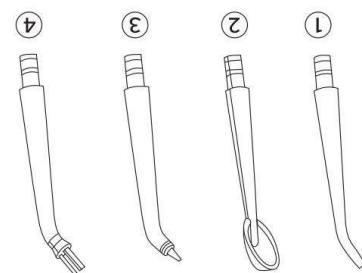


Use steps

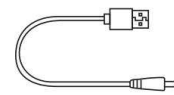
- When the instrument battery is charged, three indicator lights flash in turn, and when full, the three indicators will be on for a long time.
- Press to turn on the key shutdown. The instrument will shut down automatically for 2 minutes.
- Press for 2 seconds to switch mode to pulse, and the indicator light will also switch to corresponding indicator light, and cycle in sequence.
- Press for 2 seconds to switch mode, mode switch to strong gear, and indicator light will also switch to corresponding indicator light.
- Press the key to start the machine briefly, and the default mode is weak, and the corresponding indicator light will be on.

Operation method

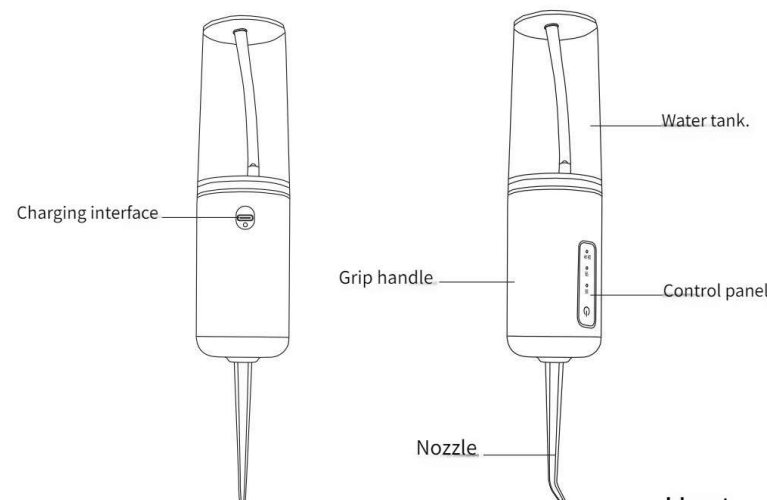
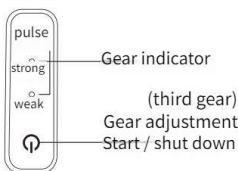
Suitable for dental band cleaning
4. Orthodontic nozzle
Special for periodontal bag cleaning. Periodontal pocket nozzle
Special for cleaning tongue coating
2. Tongue coating nozzle
Suitable for daily cleaning
1. Standard Nozzle



Charging line



Control panel



Host

Structure of tooth punch

Rated power: 3.5W
Rated voltage: 3.7V ---
Charging current:
Charging voltage: 5V---

Water tank volume: 226ml
Net weight:
Product model: 138

Product parameters

of bacteria.
water tank is dry and free of water, and then store it to prevent the growth
B. If you don't use this product for a long time, please make sure that the failure or complete damage.
A. Do not immerse the whole machine in water, which may cause product

Be careful

to the oral condition.
B. Please adjust the scour intensity of pulse flow in real time according continuously to prevent inflammation.
A. Do not wash the damaged gum or bleeding place with strong gear

Be careful

first and use it after confirmation.
the past 2 months or suffered from oral problems, please consult the doctor
E. Patients with periodontal disease or those who have had oral surgery in a toy.
D. Please put it out of the reach of children and infants, and do not use it as users.
C. If children, old people or operators want to use this product, please make
B. Some functional mouthwashes may be corrosive. Please confirm the
A. Do not use this product without the installation of nozzle.

! Be careful!

- E. Do not use the power cord when it is damaged.
- D. Do not use the product in high temperature and humid environment.
- C. Do not immerse the product in water to avoid product failure.
- the gums
- B. Do not use the nozzle to press the gum or teeth, so as not to damage the gums.
- A. Do not use the product for any purpose other than oral cleaning.

Warning

- may explode.
- F. Avoid placing the product at high temperature, do not put it into fire, and the battery
- E. If the power cord or plug is damaged, replace the power adapter and use it again.
- completely dry.
- plug and then take out the product, and then charge it after the water stains are
- D. If the product falls into water accidentally during charging, please unplug the power
- C. Do not use water above 40 °C to flush teeth in the water tank to avoid scalding.
- shock.
- B. Do not disassemble the product without permission to avoid damage or electric
- improper operation.
- A. Please read this manual carefully before use to avoid injury or damage caused by

! DANGER!

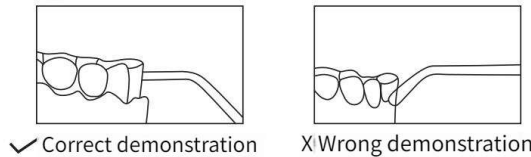
Matters needing attention

- keep fresh and clean.
- F. Help to develop a healthy habit of daily interdental cleaning, so that the teeth always
- E. For orthodontic teeth, implant teeth, tooth veneer cleaning has a good effect.
- restore clean mouth.
- D. Fast clean mouth: whether at home or eating out, it is the most effective way to quickly
- and the effect is much better than that of traditional dental floss.
- C. It can effectively remove most of the stubborn dental plaque on the surface of teeth,
- improve gingival health.
- B. Superfine water flow can clean gingival groove and deep crevices barrier free, and
- all parts of the mouth.
- A. Strong pulse water can clean up bacteria, dental stains, tartar and food residues in

Product utility

Warm tips for product use

Dental experts suggest that the first user should use the soft mode for one week, and then use the normal mode after adaptation. Press the switch button to use. The following points should be paid attention to when using: (a) The flow direction is perpendicular to the teeth or gums; (b) Move slowly along the teeth and clean them in order; (c) The nozzle is aligned vertically; (d) Thoroughly clean teeth, brackets, crowns and dentures. For the first time, do not spray water directly along the periodontal pocket for a long time, so as not to cause gingival discomfort.



Put the nozzle into the mouth before turning on the switch, so that the water will not splash. Teeth punching tip everywhere. In use, the gear gradually increases from weak to strong, and it is an adaptive stage to find the suitable gear that you can bear.

Routine maintenance

- A. If you need to clean this product, please wipe it with water or wet cloth, and then wipe the water stains on the surface with dry cloth or other dry paper towel. B. Do not immerse the product in water. C. Do not clean the product with hot water over 50 C. D. Do not bend, stretch or twist the nozzle water pipe. E. It is recommended to replace the nozzle every 3 months. Do not use this product for a long time, empty the water in the water tank and place it in a cool and dry place.

Fault diagnosis

Common problem	Possible causes	Solve the problem
Unable to work or power on. The water pressure is very low at work.	Newly purchased or not used for more than three months. Something in the nozzle is blocked. Or the nozzle is deformed. The battery is at the end of its life. Insufficient charging time.	Please charge for more than 4 hours before use. Change the nozzle.
It can only be used for a short time after charging.	The power supply is not connected properly. Adapter (charging head) mismatch. The product circuit is faulty.	Please contact customer service. Please charge for more than 4 hours before use. Please connect the power correctly.
When charging, the charging indicator does not light up or jumps disorderly.	New machine or idle for a period of time unused.	1. Pull out the nozzle to flush the nozzle hole on the main body. 2. Suck hard at the nozzle.

Environmental protection instructions

Products used in this table
Portable electric tooth punch
Statement of hazardous substances
According to the requirements for identification of hazardous substances in electronic and electrical products (GB / T 26572-2011) (also known as China rohs2.0), the following parts list the names and contents of hazardous substances that may be contained in this product.

Part name	Harmful substances					
	(Pb)	(Hg)	(Cr(VI))	(PBB)	(PBDE)	
Plastic components	○	○	○	○	○	
Hardware components	○	○	○	○	○	
Container	○	○	○	○	○	
Motor assembly	×	○	○	○	○	
Battery	×	○	○	○	○	
Data line	×	○	○	○	○	
Circuit board	×	○	○	○	○	

This form is compiled according to the rules of SJ / t11364 O :: indicates that the content of the hazardous substance in all homogeneous materials of the component is in GB / t26572-2011 (IEC62321). X :: indicates that the content of the hazardous substance in at least one homogeneous material of the component exceeds the limit specified in GB/T26572. But in the table above " x " The reason why the content of the components exceeds the standard is that the industry has not yet completed the production Ripe alternative technology.

10 Environmental protection service life

The mark on the product body indicates that the service life of environmental protection is 10 years. The environmental protection service life of electronic and electrical products refers to the period when the toxic and harmful substances or elements contained in electronic and electrical products will not leak out or suddenly mutate, and the users of electronic and electrical products will not cause serious pollution to the environment or serious damage to human body and property when using the electronic and electrical products. During the period of environmental protection, please use the product according to the instructions in order to better care for and protect the earth, when users no longer need this product or the life of the product is terminated, please comply with the relevant laws and regulations of the state on the recycling of waste electrical and electronic products, and hand it over to the local manufacturer with the recycling qualification recognized by the state for recycling.

Disposal of rechargeable battery

- The built-in rechargeable lithium battery of this product contains substances that may pollute the environment. When discarding this product, please do not put it together with general household garbage, but take out the battery.
- Be sure to turn off the power or cut off the power before decomposing the product and taking out the lithium battery.
- To take out the lithium battery, pry the buckle of the upper cover of the product, open the upper cover of the product, and then take out the lithium battery.
- The removed lithium batteries should be safely disposed of or put into the battery recycling center designated by the government, which is conducive to environmental protection. Special tips: take out the battery only when discarding the product. Please make sure that the battery is exhausted before taking it out. Non professionals should not remove it.

Recovery

When discarding the recycled products, please do not throw them together with the general household garbage, but give them to the designated recycling center. Everyone is responsible for protecting the environment!

Quality Assessment

This is to ensure that the product is of good quality, reliable performance, safe and practical. In order to solve the customer's worries, the company is responsible for the quality and after-sales service, which can be handled with this card. 1. If the main parts of the product break down during normal use within three months, repair and replace the parts free of charge. 2. When repairing, you should bring the receipt and warranty card to confirm the warranty period. 3. The warranty period is three months.

Be careful

- Abnormal use and man-made damage are not covered by the warranty.
- If the customer disassembles the machine by himself, the warranty will be cancelled.

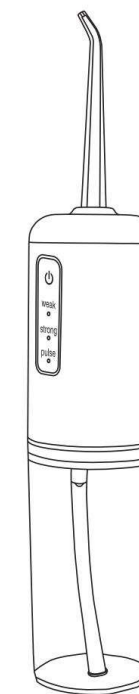
Date of purchase: _____
Place of purchase: _____

Certificate qualified

Test results: _____
examination clerk: _____
: _____
Inspection date: _____

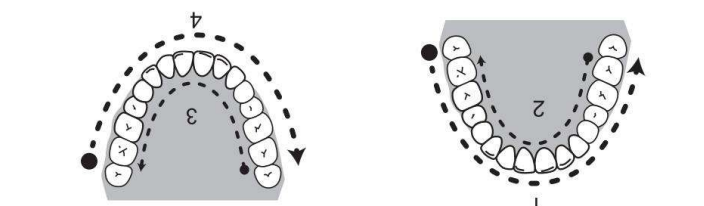


Portable electric tooth flusher



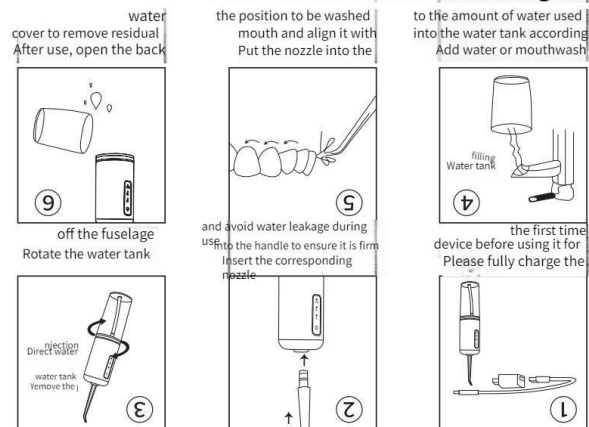
instruction manual

Disclaimer: due to the iteration of product appearance, if there is any difference between the pattern in this manual and the actual product appearance, the actual product shall prevail.



The washing sequence of the other row of teeth is the same as above. the gums in the same direction (e.g. 2 or 3) until they reach the gums of the last tooth. (e.g. 1 or 4) until they reach the gums of the last tooth. Then turn over the nozzle and flush the teeth or gums, and open the mouth slightly, so that the water can flow out smoothly. find the most suitable gear. When cleaning teeth, put the nozzle into the mouth, aim at Choose a suitable gear. It is recommended to try it from the lowest gear and gradually.

Correct method of cleaning teeth

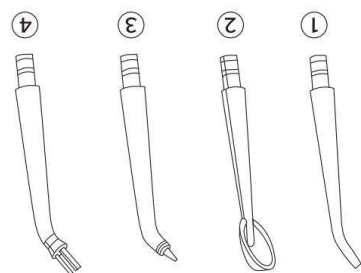


Use steps

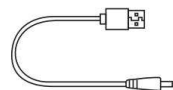
- When the instrument battery is charged, three indicator lights flash in turn, and when full, the three indicators will be on for a long time.
- Press to turn on the key shutdown. The instrument will shut down automatically for 2 minutes.
- Press for 2 seconds to switch mode to pulse, and the indicator light will also switch to corresponding indicator light, and cycle in sequence.
- Press for 2 seconds to switch mode, mode switch to strong gear, and indicator light will also switch to corresponding indicator light.
- Press the key to start the machine briefly, and the default mode is weak, and the corresponding indicator light will be on.

Operation method

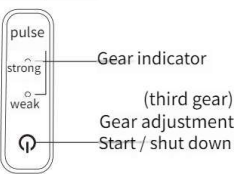
- Suitable for dental band cleaning
- 4. Orthodontic nozzle
- Special for periodontal bag cleaning. Periodontal pocket nozzle
- Special for cleaning tongue coating
- 2. Tongue coating nozzle
- Suitable for daily cleaning
- 1. Standard Nozzle



Charging line



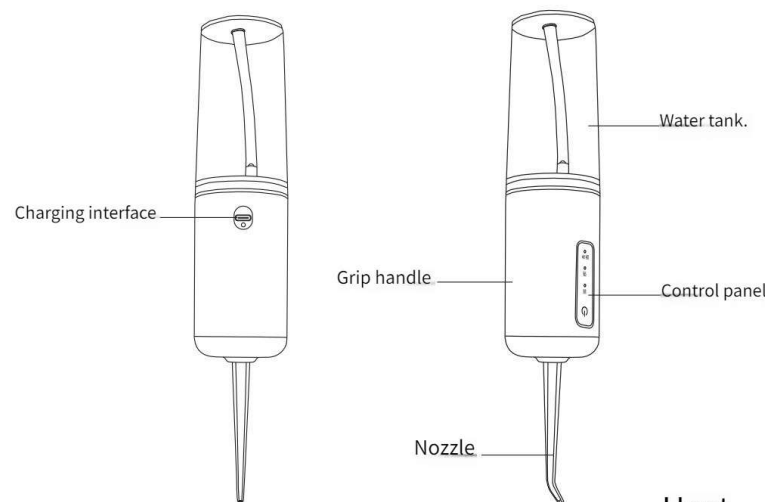
Control panel



Rated power: 3.5W
Rated voltage: 3.7V ---
Charging current:
Charging voltage: 5V---

Water tank volume: 226ml
Net weight:
Product model: 138

Product parameters



Host

Structure of tooth punch

- of bacteria.
- water tank is dry and free of water, and then store it to prevent the growth.
- B. If you don't use this product for a long time, please make sure that the failure or complete damage.
- A. Do not immerse the whole machine in water, which may cause product damage.
- Be careful
- to the oral condition.
- B. Please adjust the scour intensity of pulse flow in real time according continuously to prevent inflammation.
- A. Do not wash the damaged gum or bleeding place with strong gear.
- Be careful
- first and use it after confirmation.
- the past 2 months or suffered from oral problems, please consult the doctor.
- E. Patients with periodontal disease or those who have had oral surgery in a toy.
- D. Please put it out of the reach of children and infants, and do not use it as intended.
- C. If children, old people or operators want to use this product, please make sure to use them individually.
- B. Some functional mouthwashes may be corrosive. Please confirm the use.
- A. Do not use this product without the installation of nozzle.
- ! Be careful!

- E. Do not use the power cord when it is damaged.
- D. Do not use the product in high temperature and humid environment.
- C. Do not immerse the product in water to avoid product failure.
- the gums.
- B. Do not use the nozzle to press the gum or teeth, so as not to damage the gums.
- A. Do not use the product for any purpose other than oral cleaning.

Warning

- may explode.
- F. Avoid placing the product at high temperature, do not put it into fire, and the battery completely dry.
- E. If the power cord or plug is damaged, replace the power adapter and use it again.
- plug and then take out the product, and then charge it after the water stains are completely dry.
- D. If the product falls into water accidentally during charging, please unplug the power plug.
- C. Do not use water above 40 °C to flush teeth in the water tank to avoid scalding.
- shock.
- B. Do not disassemble the product without permission to avoid damage or electric improper operation.
- A. Please read this manual carefully before use to avoid injury or damage caused by improper operation.

! DANGER!

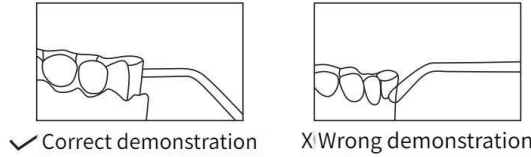
Matters needing attention

- keep fresh and clean.
- F. Help to develop a healthy habit of daily interdental cleaning, so that the teeth always restore clean mouth.
- E. For orthodontic teeth, implant teeth, tooth veneer cleaning has a good effect.
- D. Fast clean mouth: whether at home or eating out, it is the most effective way to quickly and the effect is much better than that of traditional dental floss.
- C. It can effectively remove most of the stubborn dental plaque on the surface of teeth, improve gingival health.
- B. Superfine water flow can clean gingival groove and deep crevices barrier free, and all parts of the mouth.
- A. Strong pulse water can clean up bacteria, dental stains, tartar and food residues in

Product utility

Warm tips for product use

Dental experts suggest that the first user should use the soft mode for one week, and then use the normal mode after adaptation. Press the switch button to use. The following points should be paid attention to when using: (a) The flow direction is perpendicular to the teeth or gums; (b) Move slowly along the teeth and clean them in order; (c) The nozzle is aligned vertically; (d) Thoroughly clean teeth, brackets, crowns and dentures. For the first time, do not spray water directly along the periodontal pocket for a long time, so as not to cause gingival discomfort.



Put the nozzle into the mouth before turning on the switch, so that the water will not splash. Teeth punching tip everywhere. In use, the gear gradually increases from weak to strong, and it is an adaptive stage to find the suitable gear that you can bear.

Routine maintenance

- A. If you need to clean this product, please wipe it with water or wet cloth, and then wipe the water stains on the surface with dry cloth or other dry paper towel. B. Do not immerse the product in water. C. Do not clean the product with hot water over 50 C. D. Do not bend, stretch or twist the nozzle water pipe. E. It is recommended to replace the nozzle every 3 months. Do not use this product for a long time, empty the water in the water tank and place it in a cool and dry place.

Fault diagnosis

Common problem	Possible causes	Solve the problem
Unable to work or power on. The water pressure is very low at work.	Newly purchased or not used for more than three months. Something in the nozzle is blocked.	Please charge for more than 4 hours before use. Change the nozzle.
It can only be used for a short time after charging.	The nozzle is deformed at the end of the nozzle. The battery is at the end of its life/insufficient charging time.	Please contact customer service. Please charge for more than 4 hours before use. Please connect the power correctly.
When charging, the charging indicator does not light up or jumps disorderly.	The power supply is not connected properly. Adapter (charging head) mismatch. The product circuit is faulty.	Replace the adapter or plug it directly into the USB socket. Please contact customer service.
Do not spray water when working.	New machine or idle for a period of time unused.	1. Pull out the nozzle to flush the nozzle hole on the main body. 2. Suck hard at the nozzle.

Environmental protection instructions

Products used in this table
Portable electric tooth punch
Statement of hazardous substances
According to the requirements for identification of hazardous substances in electronic and electrical products (GB / T 26572-2011) (also known as China rohs2.0), the following parts list the names and contents of hazardous substances that may be contained in this product.

Part name	Harmful substances					
	(Pb)	(Hg)	(Cr(VI))	(PBB)	(PBDE)	
Plastic components	○	○	○	○	○	○
Hardware components	○	○	○	○	○	○
Container	○	○	○	○	○	○
Motor assembly	×	○	○	○	○	○
Battery	×	○	○	○	○	○
Data line	×	○	○	○	○	○
Circuit board	×	○	○	○	○	○

This form is compiled according to the rules of SJ / t11364 O : : indicates that the content of the hazardous substance in all homogeneous materials of the component is in GB / t26572-2011 (IEC62321).
x : indicates that the content of the hazardous substance in at least one homogeneous material of the component exceeds the limit specified in GB/T26572. But in the table above " x " The reason why the content of the components exceeds the standard is that the industry has not yet completed the production Ripe alternative technology.

10 Environmental protection service life

The mark on the product body indicates that the service life of environmental protection is 10 years. The environmental protection service life of electronic and electrical products refers to the period when the toxic and harmful substances or elements contained in electronic and electrical products will not leak out or suddenly mutate, and the users of electronic and electrical products will not cause serious pollution to the environment or serious damage to human body and property when using the electronic and electrical products. During the period of environmental protection, please use the product according to the instructions in order to better care for and protect the earth, when users no longer need this product or the life of the product is terminated, please comply with the relevant laws and regulations of the state on the recycling of waste electrical and electronic products, and hand it over to the local manufacturer with the recycling qualification recognized by the state for recycling.

Disposal of rechargeable battery

- The built-in rechargeable lithium battery of this product contains substances that may pollute the environment. When discarding this product, please do not put it together with general household garbage, but take out the battery.
- Be sure to turn off the power or cut off the power before decomposing the product and taking out the lithium battery.
- To take out the lithium battery, pry the buckle of the upper cover of the product, open the upper cover of the product, and then take out the lithium battery.
- The removed lithium batteries should be safely disposed of or put into the battery recycling center designated by the government, which is conducive to environmental protection. Special tips: take out the battery only when discarding the product. Please make sure that the battery is exhausted before taking it out. Non professionals should not remove it.

Recovery

When discarding the recycled products, please do not throw them together with the general household garbage, but give them to the designated recycling center. Everyone is responsible for protecting the environment!

Quality Assessment

This is to ensure that the product is of good quality, reliable performance, safe and practical. In order to solve the customer's worries, the company is responsible for the quality and after-sales service, which can be handled with this card.
1. If the main parts of the product break down during normal use within three months, repair and replace the parts free of charge.
2. When repairing, you should bring the receipt and warranty card to confirm the warranty period.
3. The warranty period is three months.

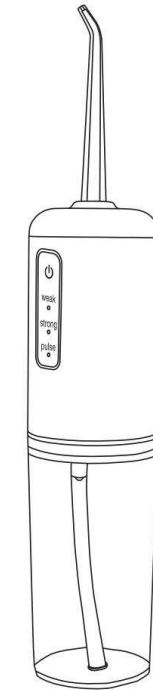
Be careful
1. Abnormal use and man-made damage are not covered by the warranty.
2. If the customer disassembles the machine by himself, the warranty will be cancelled.
Date of purchase: _____
Place of purchase: _____

Certificate qualified

Test results: _____
examination clerk: _____
: _____
Inspection date: _____

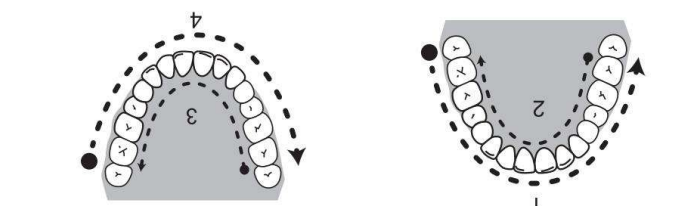


Portable electric tooth flusher



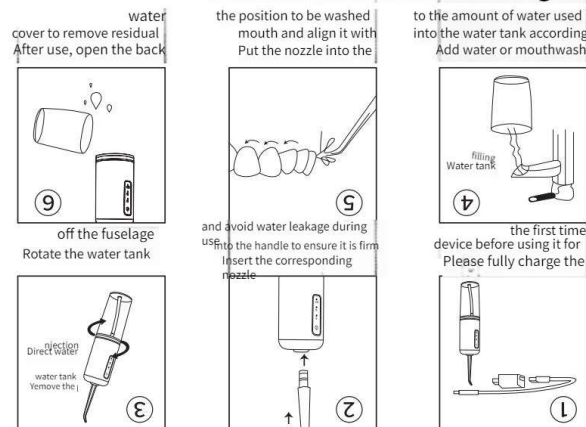
instruction manual

Disclaimer: due to the iteration of product appearance, if there is any difference between the pattern in this manual and the actual product appearance, the actual product shall prevail.



The washing sequence of the other row of teeth is the same as above. the gums in the same direction (e.g. 2 or 3) until they reach the gums of the last tooth. (e.g. 1 or 4) until they reach the gums of the last tooth. Then turn over the nozzle and flush the teeth or gums, and open the mouth slightly, so that the water can flow out smoothly. find the most suitable gear. When cleaning teeth, put the nozzle into the mouth, aim at Choose a suitable gear. It is recommended to try it from the lowest gear and gradually.

Correct method of cleaning teeth

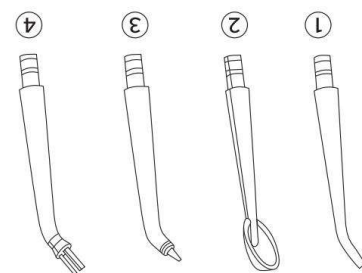


Use steps

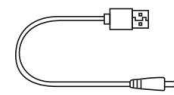
- When the instrument battery is charged, three indicator lights flash in turn, and when full, the three indicators will be on for a long time.
- Press to turn on the key shutdown. The instrument will shut down automatically for 2 minutes.
- Press for 2 seconds to switch mode to pulse, and the indicator light will also switch to corresponding indicator light, and cycle in sequence.
- Press for 2 seconds to switch mode, mode switch to strong gear, and indicator light will also switch to corresponding indicator light.
- Press the key to start the machine briefly, and the default mode is weak, and the corresponding indicator light will be on.

Operation method

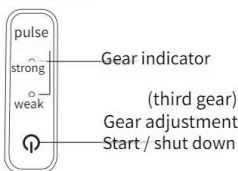
Suitable for dental band cleaning
4. Orthodontic nozzle
Special for periodontal bag cleaning. Periodontal pocket nozzle
Special for cleaning tongue coating
2. Tongue coating nozzle
Suitable for daily cleaning
1. Standard Nozzle



Charging line



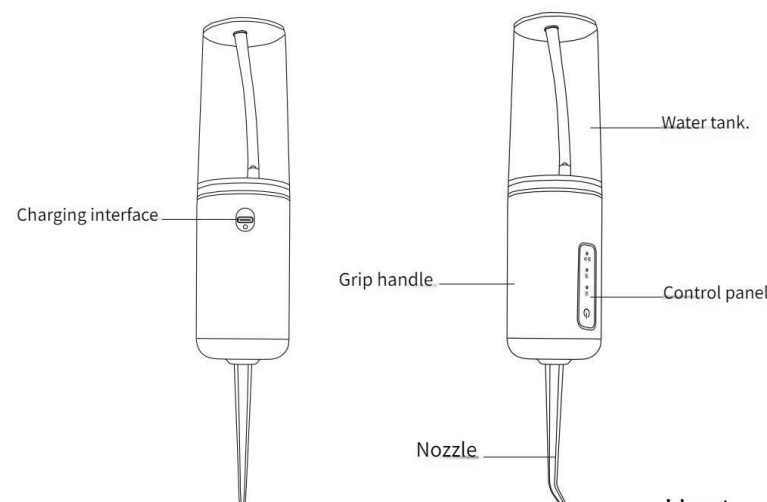
Control panel



Rated power: 3.5W
Rated voltage: 3.7V ---
Charging current:
Charging voltage: 5V---

Water tank volume: 226ml
Net weight:
Product model: 138

Product parameters



Host

Structure of tooth punch

- A. Do not immerse the whole machine in water, which may cause product failure or complete damage.
- B. If you don't use this product for a long time, please make sure that the water tank is dry and free of water, and then store it to prevent the growth of bacteria.
- C. Patients with periodontal disease or those who have had oral surgery in the past 2 months or suffered from oral problems, please consult the doctor first and use it after confirmation.
- D. Please put it out of the reach of children and infants, and do not use it as a toy.
- E. Some functional mouthwashes may be corrosive. Please confirm the use of mouthwash before use. Do not use them indiscriminately.
- F. Do not wash the damaged gum or bleeding place with strong gear.
- G. Do not use this product without the installation of nozzle.

! Be careful!

- A. Do not use the product for any purpose other than oral cleaning.
- B. Do not use the nozzle to press the gum or teeth, so as not to damage the gums.
- C. Do not immerse the product in water to avoid product failure.
- D. Do not use the product in high temperature and humid environment.
- E. Do not use the power cord when it is damaged.

Warning

- A. Please read this manual carefully before use to avoid injury or damage caused by improper operation.
- B. Do not disassemble the product without permission to avoid damage or electric shock.
- C. Do not use water above 40 °C to flush teeth in the water tank to avoid scalding.
- D. If the product falls into water accidentally during charging, please unplug the power plug and then take out the product, and then charge it after the water stains are completely dry.
- E. If the power cord or plug is damaged, replace the power adapter and use it again.
- F. Avoid placing the product at high temperature, do not put it into fire, and the battery may explode.

! DANGER!

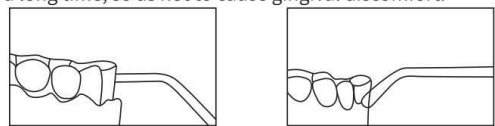
Matters needing attention

- A. Strong pulse water can clean up bacteria, dental stains, tartar and food residues in all parts of the mouth.
- B. Superfine water flow can clean gingival groove and deep crevices barrier free, and improve gingival health.
- C. It can effectively remove most of the stubborn dental plaque on the surface of teeth, restore clean mouth.
- D. Fast clean mouth: whether at home or eating out, it is the most effective way to quickly and the effect is much better than that of traditional dental floss.
- E. For orthodontic teeth, implant teeth, tooth veneer cleaning has a good effect.
- F. Help to develop a healthy habit of daily interdental cleaning, so that the teeth always keep fresh and clean.

Product utility

Warm tips for product use

Dental experts suggest that the first user should use the soft mode for one week, and then use the normal mode after adaptation. Press the switch button to use. The following points should be paid attention to when using (a) The flow direction is perpendicular to the teeth or gums; (b) Move slowly along the teeth and clean them in order; (c) The nozzle is aligned vertically; (d) Thoroughly clean teeth, brackets, crowns and dentures. For the first time, do not spray water directly along the periodontal pocket for a long time, so as not to cause gingival discomfort.



✓ Correct demonstration X Wrong demonstration

Put the nozzle into the mouth before turning on the power. In use, the gear gradually increases from weak to strong, and it is an adaptive stage to find the suitable gear that you can bear.

Routine maintenance

In this product, please wipe it with water or wet cloth, and then wipe the water stains on the surface with dry cloth or other dry paper towel. B. Do not immerse the product in water. C do not clean the product with hot water over 60°C. Do not bend, stretch or twist the nozzle water pipe. It is recommended to replace the nozzle every 3 months. Don't use this product for a long time, empty the water in the water tank and place it in a cool and dry place.

Fault diagnosis

Common problem	Possible causes	Solve the problem
Power does not work or power on	Newly purchased or not used for a long time. The battery is discharged.	Please charge for more than 4 hours before use.
The water pressure is low	Something in the nozzle is blocked.	Change the nozzle.
It can only be used for a short time	The nozzle is deformed or the battery is at the end of its life.	Please contact customer service.
Charging	Insufficient charging time.	Please charge for more than 4 hours before use.
When charging, the power does not light up or jumps	The power supply is not connected properly. Adapter (charging head) is not inserted correctly.	Replace the adapter or plug it directly into the USB socket. Please contact customer service.
Discharge water	The product circuit is faulty.	Please contact customer service.
Water spraying	New machine or idle for a period of time unused.	Put out the nozzle to flush the nozzle hole on the main body.

Environmental protection instructions

Products used in this portable electric tooth punch contain hazardous substances. According to the requirements for identification of hazardous substances in electronic and electrical products (GB / T 26572-2011) (also known as China rohs2.0), the following parts list the names and contents of hazardous substances that may be contained in this product.

Part name	Harmful substances					
	(Pb)	(Hg)	(Cd)	(Cr(VI))	(PBB)	(PBDE)
Plastic components	○	○	○	○	○	○
Electronic components	○	○	○	○	○	○
Motor	x	○	○	○	○	○
Battery	x	○	○	○	○	○
Data	x	○	○	○	○	○
Circuit	x	○	○	○	○	○

This table is compiled according to the rules of SJ / T11364. O : : indicates that the content of the hazardous substance in all materials of the component is in GB / T26572-2011. X indicates that the content of the hazardous substance in at least one material of the component exceeds the limit specified in GB/T26572. But in the table above, the reason why the content of the components does not yet completed the production alternative technology.

Environmental protection service

The life cycle of the product body indicates that the service life of environmental protection. The environmental protection service life of electronic and electrical products refers to the period when the toxic and harmful substances contained in electronic and electrical products will not cause serious pollution to the environment or serious damage to human body and property when using the electronic and electrical products. During the period of environmental protection, please use the product according to the instructions.

In order to better care for and protect the earth, when users no longer need laws and regulations of the state on the recycling of waste electrical and electronic products, and hand it over to the local manufacturer with the recycling qualification recognized by the state for recycling.

Disposal of rechargeable battery

1. The built-in rechargeable lithium battery of this product contains substances that may pollute the environment. When discarding this product, please do not put it together with general household garbage, but take out the battery. 2. Be sure to turn off the power or cut off the power before decomposing the product and taking out the lithium battery. 3. To take out the lithium battery, pry the buckle of the upper cover of the product, and then take out the lithium battery. Removed lithium batteries should be safely disposed and put into the battery recycling center designated by the government, which is conducive to environmental protection. Special tips: take out the battery only when discarding the product. Please make sure that the battery is exhausted before taking it out. Non professionals should not remove it.

Recovery

When discarding the recycled products, please do not throw them together with general household garbage, but give them to the designated!

Quality Assessment

This is to ensure that the product is of good quality, reliable performance. In order to solve the customer's worries, the company is responsible for the quality of the product. Check down including normal use within three months, repair and replace the parts free of charge. When repairing, you should bring the receipt and warranty card to confirm the warranty period. 3. The warranty period is three months.

- 1. Abnormal use and man-made damage are not covered by the warranty.
- 2. If the customer disassembles the machine by himself, the warranty will be cancelled.

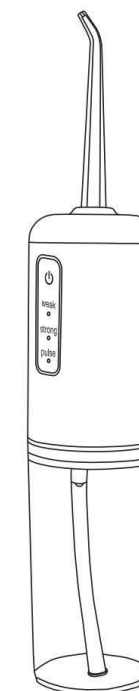
Date of purchase: _____
Place of purchase: _____

Certificate qualified

Test results: _____
Examination clerk: _____
Inspection date: _____

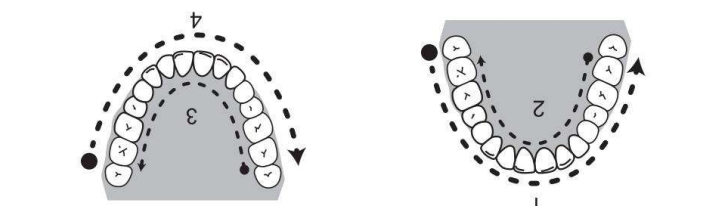


Portable electric tooth flusher



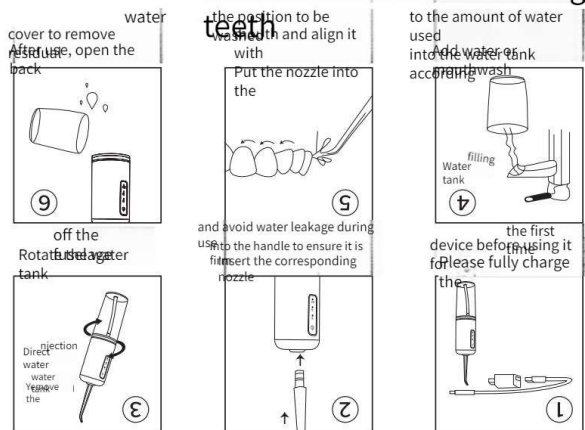
instruction manual

Disclaimer: due to the iteration of product appearance, if there is any difference between the pattern in this manual and the actual product appearance, the actual product shall prevail.



The washing sequence of the other row of teeth is the same as the gums in the same direction (e.g. 2 or 3) until they reach the gums of the last (e.g. 4 or 1) until they reach the gums of the last tooth. Then turn over the nozzle and clean the tooth or gums, and open the mouth slightly, so that the water can flow out smoothly. Choose the most suitable gear. When cleaning teeth, put the nozzle into the mouth, aim at a suitable gear. It is recommended to try it from the lowest gear of the capability.

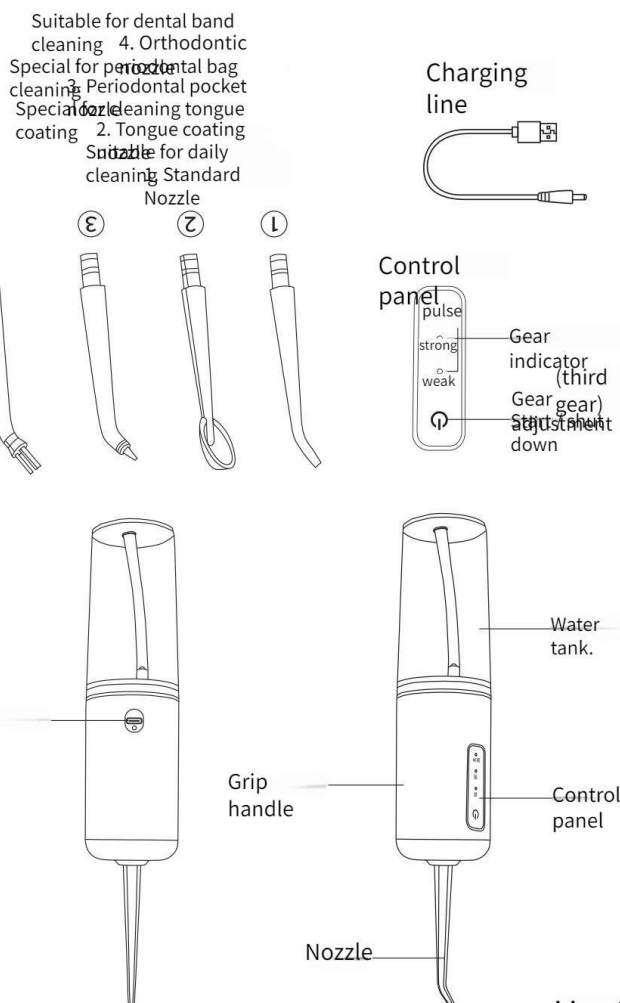
Correct method of cleaning



Use steps

When the instrument battery is charged, three indicator lights flash in turn, and when full, the three indicator lights will be on for a long time. Press for 2 seconds to switch mode to pulse. Press for 2 seconds to switch mode, mode switch to strong gear, and indicator light will also switch to corresponding indicator light. Press the key to start the machine briefly, and the default mode is weak, and the corresponding indicator light will be on.

Operation method



Structure of tooth punch

Host

Rated power: 3W
Rated voltage: 3.7V
Charging current: 100mA
Charging voltage: 5V--
Water tank volume: 226ml
Net weight: 138g
Product model: 138

Product parameters

A. Do not immerse the whole machine in water, which may cause product failure or complete damage.

B. Please adjust the scour intensity of pulse flow in time according to the oral condition. Do not wash the damaged gum area with strong gear.

C. If children, old people or operators want to use this product, please make sure that the oral cavity is healthy. Do not use this product without the installation of nozzle.

D. Please put it out of the reach of children and infants, and do not use it as a toy.

E. Patients with periodontal disease or those who have had oral surgery should consult the doctor before using.

A. Do not use this product without the installation of nozzle.

! Be careful

- D. Do not use the product at high temperature and humid environment. Do not immerse the product in water to avoid product failure.
- B. Do not use the nozzle to press the gum or teeth, so as not to damage the gum. Do not use the product for any purpose other than oral cleaning.

Warning

- F. Avoid placing the product at high temperature, do not put it into fire, and do not use it when the power cord or plug is damaged, replace the power adapter and use it again.
- D. If the product falls into water accidentally during charging, please unplug the power cord. Do not use water above 40 °C to flush teeth in the water tank to avoid scalding.
- A. Please read this manual carefully before use to avoid injury caused by improper operation.

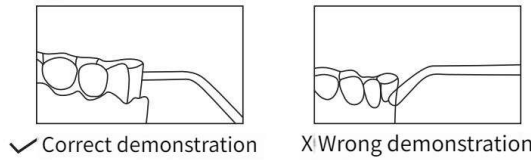
DANGER attention

- F. Help to develop a healthy habit of daily interdental cleaning to keep fresh and healthy teeth. For orthodontic teeth, implant teeth, tooth veneer cleaning has a good effect.
- D. Fast clean mouth: whether at home or eating out, it is the most effective way to quickly clean the mouth, and the effect is much better than that of traditional dental floss. It can effectively remove most of the stubborn dental plaque on the surface of teeth, improve gingival health, and prevent the formation of periodontitis.
- B. Superfine water flow can clean gingival groove and deep crevice barrier free, and improve the oral environment.
- A. Strong pulse water can clean up bacteria, dental stains, and food residues in the mouth.

Product utility

Warm tips for product use

Dental experts suggest that the first user should use the soft mode for one week, and then use the normal mode after adaptation. Press the switch button to use. The following points should be paid attention to when using: (a) The flow direction is perpendicular to the teeth or gums; (b) Move slowly along the teeth and clean them in order; (c) The nozzle is aligned vertically; (d) Thoroughly clean teeth, brackets, crowns and dentures. For the first time, do not spray water directly along the periodontal pocket for a long time, so as not to cause gingival discomfort.



Put the nozzle into the mouth before turning on the switch, so that the water will not splash. Teeth punching tip everywhere. In use, the gear gradually increases from weak to strong, and it is an adaptive stage to find the suitable gear that you can bear.

Routine maintenance

- A. If you need to clean this product, please wipe it with water or wet cloth, and then wipe the water stains on the surface with dry cloth or other dry paper towel. B. Do not immerse the product in water. C. Do not clean the product with hot water over 50 C. D. Do not bend, stretch or twist the nozzle water pipe. E. It is recommended to replace the nozzle every 3 months. Do not use this product for a long time, empty the water in the water tank and place it in a cool and dry place.

Fault diagnosis

Common problem	Possible causes	Solve the problem
Unable to work or power on. The water pressure is very low at work.	Newly purchased or not used for more than three months. Something in the nozzle is blocked.	Please charge for more than 4 hours before use. Change the nozzle.
It can only be used for a short time after charging.	The nozzle is deformed at the end of the nozzle. The battery is insufficient charging time.	Please contact customer service. Please charge for more than 4 hours before use. Please connect the power correctly.
When charging, the charging indicator does not light up or jumps disorderly.	The power supply is not connected properly. Adapter (charging head) mismatch. The product circuit is faulty.	Replace the adapter or plug it directly into the USB socket. Please contact customer service.
Do not spray water when working.	New machine or idle for a period of time unused.	1. Pull out the nozzle to flush the nozzle hole on the main body. 2. Suck hard at the nozzle.

Environmental protection instructions

Products used in this table
Portable electric tooth punch
Statement of hazardous substances
According to the requirements for identification of hazardous substances in electronic and electrical products (GB / T 26572-2011) (also known as China rohs2.0), the following parts list the names and contents of hazardous substances that may be contained in this product.

Part name	Harmful substances					
	(Pb)	(Hg)	(Cr(VI))	(PBB)	(PBDE)	
Plastic components	○	○	○	○	○	○
Hardware components	○	○	○	○	○	○
Container	○	○	○	○	○	○
Motor assembly	×	○	○	○	○	○
Battery	×	○	○	○	○	○
Data line	×	○	○	○	○	○
Circuit board	×	○	○	○	○	○

This form is compiled according to the rules of SJ / t11364 O : : indicates that the content of the hazardous substance in all homogeneous materials of the component is in GB / t26572-2011 (IEC62321).
x : indicates that the content of the hazardous substance in at least one homogeneous material of the component exceeds the limit specified in GB/T26572. But in the table above " x " The reason why the content of the components exceeds the standard is that the industry has not yet completed the production Ripe alternative technology.

Environmental protection service life

The mark on the product body indicates that the service life of environmental protection is 10 years. The environmental protection service life of electronic and electrical products refers to the period when the toxic and harmful substances or elements contained in electronic and electrical products will not leak out or suddenly mutate, and the users of electronic and electrical products will not cause serious pollution to the environment or serious damage to human body and property when using the electronic and electrical products. During the period of environmental protection, please use the product according to the instructions in order to better care for and protect the earth, when users no longer need this product or the life of the product is terminated, please comply with the relevant laws and regulations of the state on the recycling of waste electrical and electronic products, and hand it over to the local manufacturer with the recycling qualification recognized by the state for recycling.

Disposal of rechargeable battery

- The built-in rechargeable lithium battery of this product contains substances that may pollute the environment. When discarding this product, please do not put it together with general household garbage, but take out the battery.
- Be sure to turn off the power or cut off the power before decomposing the product and taking out the lithium battery.
- To take out the lithium battery, pry the buckle of the upper cover of the product, open the upper cover of the product, and then take out the lithium battery.
- The removed lithium batteries should be safely disposed of or put into the battery recycling center designated by the government, which is conducive to environmental protection. Special tips: take out the battery only when discarding the product. Please make sure that the battery is exhausted before taking it out. Non professionals should not remove it.

Recovery

When discarding the recycled products, please do not throw them together with the general household garbage, but give them to the designated recycling center. Everyone is responsible for protecting the environment!

Quality Assessment

This is to ensure that the product is of good quality, reliable performance, safe and practical. In order to solve the customer's worries, the company is responsible for the quality and after-sales service, which can be handled with this card.

- If the main parts of the product break down during normal use within three months, repair and replace the parts free of charge.
- When repairing, you should bring the receipt and warranty card to confirm the warranty period.
- The warranty period is three months.

Be careful

- Abnormal use and man-made damage are not covered by the warranty.
- If the customer disassembles the machine by himself, the warranty will be cancelled.

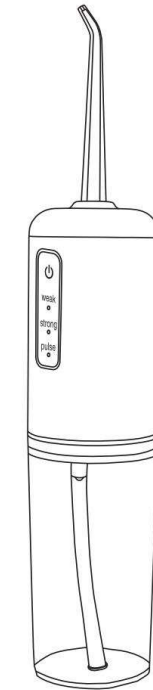
Date of purchase: _____
Place of purchase: _____

Certificate qualified

Test results: _____
examination clerk: _____
: _____
Inspection date: _____

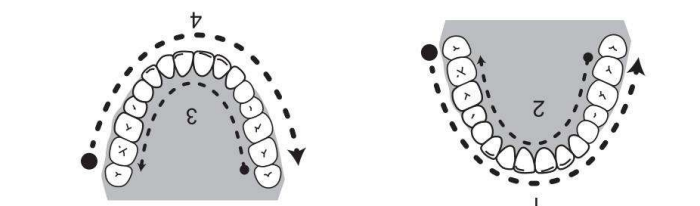


Portable electric tooth flusher



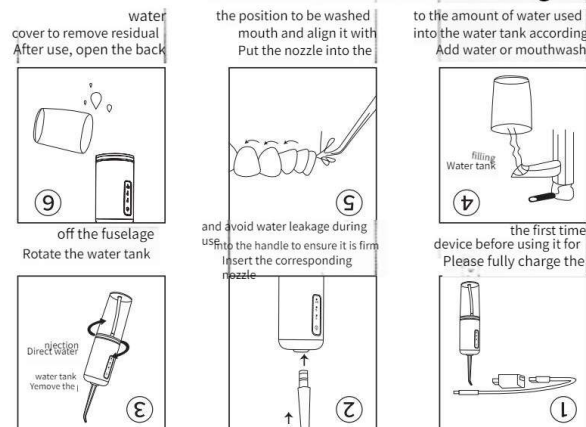
instruction manual

Disclaimer: due to the iteration of product appearance, if there is any difference between the pattern in this manual and the actual product appearance, the actual product shall prevail.



The washing sequence of the other row of teeth is the same as above. the gums in the same direction (e.g. 2 or 3) until they reach the gums of the last tooth. (e.g. 1 or 4) until they reach the gums of the last tooth. Then turn over the nozzle and flush the teeth or gums, and open the mouth slightly, so that the water can flow out smoothly. find the most suitable gear. When cleaning teeth, put the nozzle into the mouth, aim at Choose a suitable gear. It is recommended to try it from the lowest gear and gradually.

Correct method of cleaning teeth

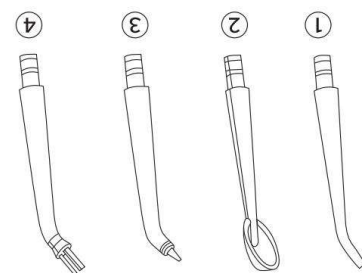


Use steps

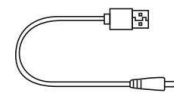
- When the instrument battery is charged, three indicator lights flash in turn, and when full, the three indicators will be on for a long time.
- Press to turn on the key shutdown. The instrument will shut down automatically for 2 minutes.
- Press for 2 seconds to switch mode to pulse, and the indicator light will also switch to corresponding indicator light, and cycle in sequence.
- Press for 2 seconds to switch mode, mode switch to strong gear, and indicator light will also switch to corresponding indicator light.
- Press the key to start the machine briefly, and the default mode is weak, and the corresponding indicator light will be on.

Operation method

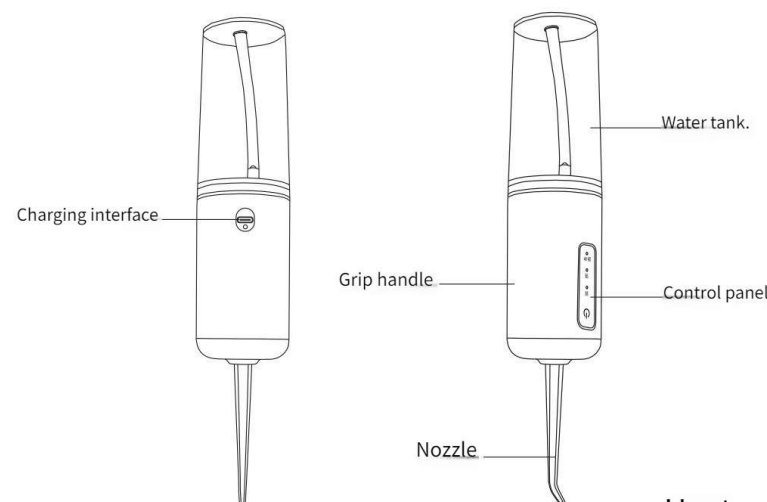
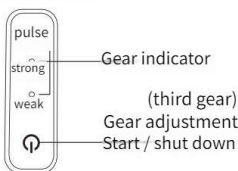
- Suitable for dental band cleaning
- 4. Orthodontic nozzle
- Special for periodontal bag cleaning
- Periodontal pocket nozzle
- Special for cleaning tongue coating
- 2. Tongue coating nozzle
- Suitable for daily cleaning
- 1. Standard Nozzle



Charging line



Control panel



Host

Structure of tooth punch

Rated power: 3.5W
Rated voltage: 3.7V ---
Charging current:
Charging voltage: 5V---

Water tank volume: 226ml
Net weight:
Product model: 138

Product parameters

- A. Do not immerse the whole machine in water, which may cause product failure or complete damage.
- B. If you don't use this product for a long time, please make sure that the water tank is dry and free of water, and then store it to prevent the growth of bacteria.
- C. Do not use this product in high temperature and humid environment.
- D. Do not use the product in high temperature and humid environment.
- E. Do not use the power cord when it is damaged.
- F. Avoid placing the product at high temperature, do not put it into fire, and the battery may explode.
- G. Do not immerse the product in water to avoid product failure.
- H. Do not use the nozzle to press the gum or teeth, so as not to damage the gums.
- I. Do not use the product for any purpose other than oral cleaning.
- J. Do not disassemble the product without permission to avoid damage or electric shock.
- K. Do not use water above 40 °C to flush teeth in the water tank to avoid scalding.
- L. If the power cord or plug is damaged, replace the power adapter and use it again.
- M. If the product falls into water accidentally during charging, please unplug the power plug and then take out the product, and then charge it after the water stains are completely dry.
- N. Please read this manual carefully before use to avoid injury or damage caused by improper operation.

Be careful

- A. Do not wash the damaged gum or bleeding place with strong gear.
- B. Please adjust the scour intensity of pulse flow in real time according to the oral condition.
- C. Do not use this product without the installation of nozzle.
- D. Please put it out of the reach of children and infants, and do not use it as a toy.
- E. Patients with periodontal disease or those who have had oral surgery in the past 2 months or suffered from oral problems, please consult the doctor first and use it after confirmation.
- F. Some functional mouthwashes may be corrosive. Please confirm the use of mouthwash before use. Do not use them indiscriminately.
- G. Superfine water flow can clean gingival groove and deep crevices barrier free, and improve gingival health.
- H. Strong pulse water can clean up bacteria, dental stains, tartar and food residues in all parts of the mouth.

! Be careful!

Warning

! DANGER!

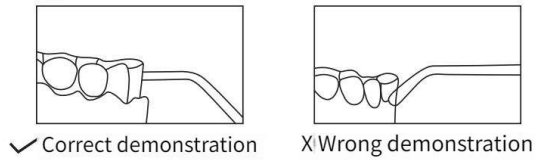
Matters needing attention

- A. Fast clean mouth: whether at home or eating out, it is the most effective way to quickly restore clean mouth.
- B. Superfine water flow can clean gingival groove and deep crevices barrier free, and improve gingival health.
- C. It can effectively remove most of the stubborn dental plaque on the surface of teeth, all parts of the mouth.
- D. Strong pulse water can clean up bacteria, dental stains, tartar and food residues in all parts of the mouth.
- E. For orthodontic teeth, implant teeth, tooth veneer cleaning has a good effect.
- F. Help to develop a healthy habit of daily interdental cleaning, so that the teeth always keep fresh and clean.

Product utility

Warm tips for product use

Dental experts suggest that the first user should use the soft mode for one week, and then use the normal mode after adaptation. Press the switch button to use. The following points should be paid attention to when using: (a) The flow direction is perpendicular to the teeth or gums; (b) Move slowly along the teeth and clean them in order; (c) The nozzle is aligned vertically; (d) Thoroughly clean teeth, brackets, crowns and dentures. For the first time, do not spray water directly along the periodontal pocket for a long time, so as not to cause gingival discomfort.



Put the nozzle into the mouth before turning on the switch, so that the water will not splash. Teeth punching tip everywhere. In use, the gear gradually increases from weak to strong, and it is an adaptive stage to find the suitable gear that you can bear.

Routine maintenance

- A. If you need to clean this product, please wipe it with water or wet cloth, and then wipe the water stains on the surface with dry cloth or other dry paper towel. B. Do not immerse the product in water. C. Do not clean the product with hot water over 50 C. D. Do not bend, stretch or twist the nozzle water pipe. E. It is recommended to replace the nozzle every 3 months. Do not use this product for a long time, empty the water in the water tank and place it in a cool and dry place.

Fault diagnosis

Common problem	Possible causes	Solve the problem
Unable to work or power on. The water pressure is very low at work.	Newly purchased or not used for more than three months. Something in the nozzle is blocked.	Please charge for more than 4 hours before use. Change the nozzle.
It can only be used for a short time after charging.	The nozzle is deformed at the end of the nozzle. The battery is insufficient charging time.	Please contact customer service. Please charge for more than 4 hours before use. Please connect the power correctly.
When charging, the charging indicator does not light up or jumps disorderly.	The power supply is not connected properly. Adapter (charging head) mismatch. The product circuit is faulty.	Replace the adapter or plug it directly into the USB socket. Please contact customer service.
Do not spray water when working.	New machine or idle for a period of time unused.	1. Pull out the nozzle to flush the nozzle hole on the main body. 2. Suck hard at the nozzle.

Environmental protection instructions

Products used in this table
Portable electric tooth punch
Statement of hazardous substances
According to the requirements for identification of hazardous substances in electronic and electrical products (GB / T 26572-2011) (also known as China rohs2.0), the following parts list the names and contents of hazardous substances that may be contained in this product.

Part name	Harmful substances					
	(Pb)	(Hg)	(Cr(VI))	(PBB)	(PBDE)	
Plastic components	○	○	○	○	○	○
Hardware components	○	○	○	○	○	○
Container	○	○	○	○	○	○
Motor assembly	×	○	○	○	○	○
Battery	×	○	○	○	○	○
Data line	×	○	○	○	○	○
Circuit board	×	○	○	○	○	○

This form is compiled according to the rules of SJ / t11364 O : : indicates that the content of the hazardous substance in all homogeneous materials of the component is in GB / t26572-2011 (IEC62321).
x : indicates that the content of the hazardous substance in at least one homogeneous material of the component exceeds the limit specified in GB/T26572. But in the table above " x " The reason why the content of the components exceeds the standard is that the industry has not yet completed the production Ripe alternative technology.

10 Environmental protection service life

The mark on the product body indicates that the service life of environmental protection is 10 years. The environmental protection service life of electronic and electrical products refers to the period when the toxic and harmful substances or elements contained in electronic and electrical products will not leak out or suddenly mutate, and the users of electronic and electrical products will not cause serious pollution to the environment or serious damage to human body and property when using the electronic and electrical products. During the period of environmental protection, please use the product according to the instructions in order to better care for and protect the earth, when users no longer need this product or the life of the product is terminated, please comply with the relevant laws and regulations of the state on the recycling of waste electrical and electronic products, and hand it over to the local manufacturer with the recycling qualification recognized by the state for recycling.

Disposal of rechargeable battery

- The built-in rechargeable lithium battery of this product contains substances that may pollute the environment. When discarding this product, please do not put it together with general household garbage, but take out the battery.
- Be sure to turn off the power or cut off the power before decomposing the product and taking out the lithium battery.
- To take out the lithium battery, pry the buckle of the upper cover of the product, open the upper cover of the product, and then take out the lithium battery.
- The removed lithium batteries should be safely disposed of or put into the battery recycling center designated by the government, which is conducive to environmental protection. Special tips: take out the battery only when discarding the product. Please make sure that the battery is exhausted before taking it out. Non professionals should not remove it.

Recovery

When discarding the recycled products, please do not throw them together with the general household garbage, but give them to the designated recycling center. Everyone is responsible for protecting the environment!

Quality Assessment

This is to ensure that the product is of good quality, reliable performance, safe and practical. In order to solve the customer's worries, the company is responsible for the quality and after-sales service, which can be handled with this card

- If the main parts of the product break down during normal use within three months, repair and replace the parts free of charge.
- When repairing, you should bring the receipt and warranty card to confirm the warranty period.
- The warranty period is three months.

Be careful

- Abnormal use and man-made damage are not covered by the warranty.
- If the customer disassembles the machine by himself, the warranty will be cancelled.

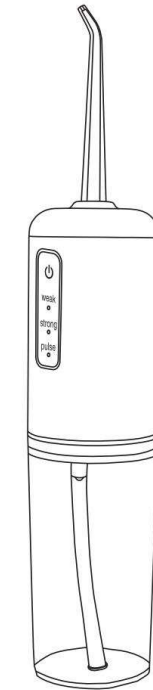
Date of purchase: _____
Place of purchase: _____

Certificate qualified

Test results: _____
examination clerk: _____
: _____
Inspection date: _____

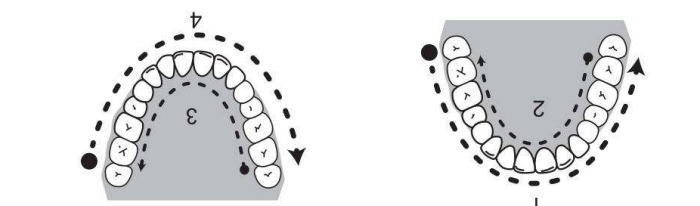


Portable electric tooth flusher



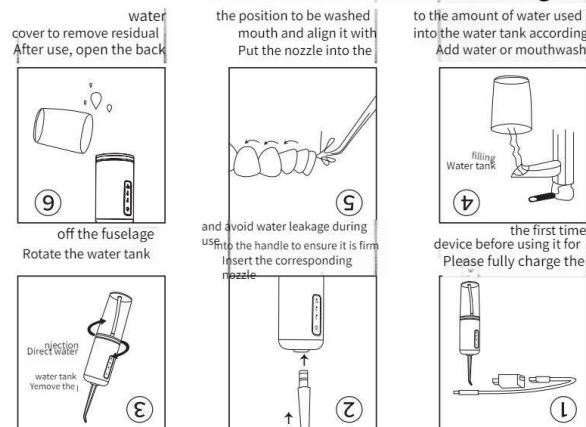
instruction manual

Disclaimer: due to the iteration of product appearance, if there is any difference between the pattern in this manual and the actual product appearance, the actual product shall prevail.



The washing sequence of the other row of teeth is the same as above. the gums in the same direction (e.g. 2 or 3) until they reach the gums of the last tooth. (e.g. 1 or 4) until they reach the gums of the last tooth. Then turn over the nozzle and flush the teeth or gums, and open the mouth slightly, so that the water can flow out smoothly. find the most suitable gear. When cleaning teeth, put the nozzle into the mouth, aim at Choose a suitable gear. It is recommended to try it from the lowest gear and gradually

Correct method of cleaning teeth

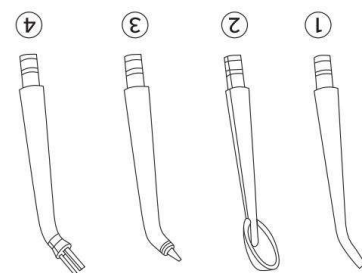


Use steps

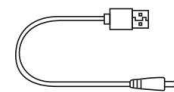
- When the instrument battery is charged, three indicator lights flash in turn, and when full, the three indicators will be on for a long time.
- Press to turn on the key shutdown. The instrument will shut down automatically for 2 minutes.
- Press for 2 seconds to switch mode to pulse, and the indicator light will also switch to corresponding indicator light, and cycle in sequence.
- Press for 2 seconds to switch mode, mode switch to strong gear, and indicator light will also switch to corresponding indicator light.
- Press the key to start the machine briefly, and the default mode is weak, and the corresponding indicator light will be on.

Operation method

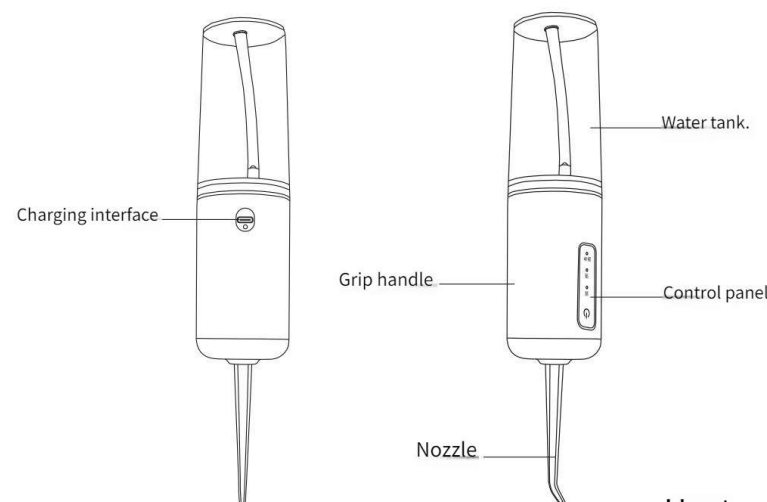
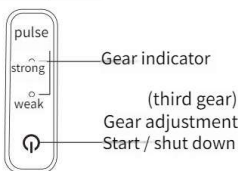
- Suitable for dental band cleaning
- 4. Orthodontic nozzle
- Special for periodontal bag cleaning
- Periodontal pocket nozzle
- Special for cleaning tongue coating
- 2. Tongue coating nozzle
- Suitable for daily cleaning
- 1. Standard Nozzle



Charging line



Control panel



Host

Structure of tooth punch

Rated power: 3.5W
Rated voltage: 3.7V ---
Charging current:
Charging voltage: 5V---

Water tank volume: 226ml
Net weight:
Product model: 138

Product parameters

of bacteria.
water tank is dry and free of water, and then store it to prevent the growth
B. If you don't use this product for a long time, please make sure that the failure or complete damage.
A. Do not immerse the whole machine in water, which may cause product

Be careful

to the oral condition.
B. Please adjust the scour intensity of pulse flow in real time according continuously to prevent inflammation.
A. Do not wash the damaged gum or bleeding place with strong gear

Be careful

first and use it after confirmation.
the past 2 months or suffered from oral problems, please consult the doctor
E. Patients with periodontal disease or those who have had oral surgery in a toy.
D. Please put it out of the reach of children and infants, and do not use it as

users.
C. If children, old people or operators want to use this product, please make
B. Some functional mouthwashes may be corrosive. Please confirm the
A. Do not use this product without the installation of nozzle.

! Be careful!

- E. Do not use the power cord when it is damaged.
- D. Do not use the product in high temperature and humid environment.
- C. Do not immerse the product in water to avoid product failure.
- the
- B. Do not use the nozzle to press the gum or teeth, so as not to damage the gums.
- A. Do not use the product for any purpose other than oral cleaning.

Warning

- may explode.
- F. Avoid placing the product at high temperature, do not put it into fire, and the battery
- E. If the power cord or plug is damaged, replace the power adapter and use it again.
- completely dry.
- plug and then take out the product, and then charge it after the water stains are
- D. If the product falls into water accidentally during charging, please unplug the power
- C. Do not use water above 40 °C to flush teeth in the water tank to avoid scalding.
- shock.
- B. Do not disassemble the product without permission to avoid damage or electric
- improper operation.
- A. Please read this manual carefully before use to avoid injury or damage caused by

! DANGER!

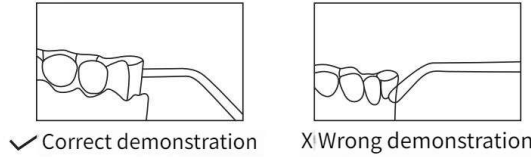
Matters needing attention

- keep fresh and clean.
- F. Help to develop a healthy habit of daily interdental cleaning, so that the teeth always
- E. For orthodontic teeth, implant teeth, tooth veneer cleaning has a good effect.
- restore clean mouth.
- D. Fast clean mouth: whether at home or eating out, it is the most effective way to quickly
- and the effect is much better than that of traditional dental floss.
- C. It can effectively remove most of the stubborn dental plaque on the surface of teeth,
- improve gingival health.
- B. Superfine water flow can clean gingival groove and deep crevices barrier free, and
- all parts of the mouth.
- A. Strong pulse water can clean up bacteria, dental stains, tartar and food residues in

Product utility

Warm tips for product use

Dental experts suggest that the first user should use the soft mode for one week, and then use the normal mode after adaptation. Press the switch button to use. The following points should be paid attention to when using: (a) The flow direction is perpendicular to the teeth or gums; (b) Move slowly along the teeth and clean them in order; (c) The nozzle is aligned vertically; (d) Thoroughly clean teeth, brackets, crowns and dentures. For the first time, do not spray water directly along the periodontal pocket for a long time, so as not to cause gingival discomfort.



Put the nozzle into the mouth before turning on the switch, so that the water will not splash. Teeth punching tip everywhere. In use, the gear gradually increases from weak to strong, and it is an adaptive stage to find the suitable gear that you can bear.

Routine maintenance

- A. If you need to clean this product, please wipe it with water or wet cloth, and then wipe the water stains on the surface with dry cloth or other dry paper towel. B. Do not immerse the product in water. C. Do not clean the product with hot water over 50 °C. D. Do not bend, stretch or twist the nozzle water pipe. E. It is recommended to replace the nozzle every 3 months. Do not use this product for a long time, empty the water in the water tank and place it in a cool and dry place.

Fault diagnosis

Common problem	Possible causes	Solve the problem
Unable to work or power on. The water pressure is very low at work.	Newly purchased or not used for more than three months. Something in the nozzle is blocked.	Please charge for more than 4 hours before use. Change the nozzle.
It can only be used for a short time after charging.	The nozzle is deformed at the end of the nozzle. The battery is insufficient charging time.	Please contact customer service. Please charge for more than 4 hours before use. Please connect the power correctly.
When charging, the charging indicator does not light up or jumps disorderly.	The power supply is not connected properly. Adapter (charging head) mismatch. The product circuit is faulty.	Replace the adapter or plug it directly into the USB socket. Please contact customer service.
Do not spray water when working.	New machine or idle for a period of time unused.	1. Pull out the nozzle to flush the nozzle hole on the main body. 2. Suck hard at the nozzle.

Environmental protection instructions

Products used in this table
Portable electric tooth punch
Statement of hazardous substances
According to the requirements for identification of hazardous substances in electronic and electrical products (GB / T 26572-2011) (also known as China rohs2.0), the following parts list the names and contents of hazardous substances that may be contained in this product.

Part name	Harmful substances					
	(Pb)	(Hg)	(Cr(VI))	(PBB)	(PBDE)	
Plastic components	○	○	○	○	○	○
Hardware components	○	○	○	○	○	○
Container	○	○	○	○	○	○
Motor assembly	×	○	○	○	○	○
Battery	×	○	○	○	○	○
Data line	×	○	○	○	○	○
Circuit board	×	○	○	○	○	○

This form is compiled according to the rules of SJ / T11364 O : : indicates that the content of the hazardous substance in all homogeneous materials of the component is in GB / T26572-2011 (IEC62321).
x : indicates that the content of the hazardous substance in at least one homogeneous material of the component exceeds the limit specified in GB/T26572. But in the table above " x " The reason why the content of the components exceeds the standard is that the industry has not yet completed the production Ripe alternative technology.

10 Environmental protection service life

The mark on the product body indicates that the service life of environmental protection is 10 years. The environmental protection service life of electronic and electrical products refers to the period when the toxic and harmful substances or elements contained in electronic and electrical products will not leak out or suddenly mutate, and the users of electronic and electrical products will not cause serious pollution to the environment or serious damage to human body and property when using the electronic and electrical products. During the period of environmental protection, please use the product according to the instructions in order to better care for and protect the earth, when users no longer need this product or the life of the product is terminated, please comply with the relevant laws and regulations of the state on the recycling of waste electrical and electronic products, and hand it over to the local manufacturer with the recycling qualification recognized by the state for recycling.

Disposal of rechargeable battery

- The built-in rechargeable lithium battery of this product contains substances that may pollute the environment. When discarding this product, please do not put it together with general household garbage, but take out the battery.
- Be sure to turn off the power or cut off the power before decomposing the product and taking out the lithium battery.
- To take out the lithium battery, pry the buckle of the upper cover of the product, open the upper cover of the product, and then take out the lithium battery.
- The removed lithium batteries should be safely disposed of or put into the battery recycling center designated by the government, which is conducive to environmental protection. Special tips: take out the battery only when discarding the product. Please make sure that the battery is exhausted before taking it out. Non professionals should not remove it.

Recovery

When discarding the recycled products, please do not throw them together with the general household garbage, but give them to the designated recycling center. Everyone is responsible for protecting the environment!

Quality Assessment

This is to ensure that the product is of good quality, reliable performance, safe and practical. In order to solve the customer's worries, the company is responsible for the quality and after-sales service, which can be handled with this card

- If the main parts of the product break down during normal use within three months, repair and replace the parts free of charge.
- When repairing, you should bring the receipt and warranty card to confirm the warranty period.
- The warranty period is three months.

Be careful

- Abnormal use and man-made damage are not covered by the warranty.
- If the customer disassembles the machine by himself, the warranty will be cancelled.

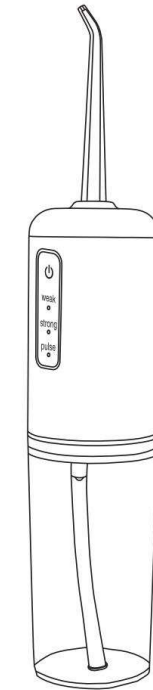
Date of purchase: _____
Place of purchase: _____

Certificate qualified

Test results: _____
examination clerk: _____
: _____
Inspection date: _____

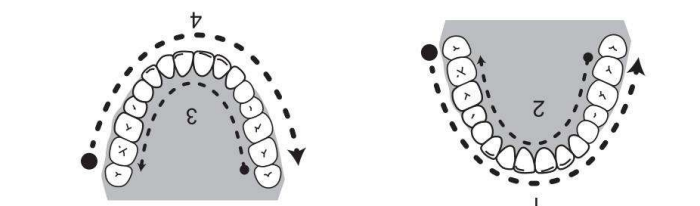


Portable electric tooth flusher



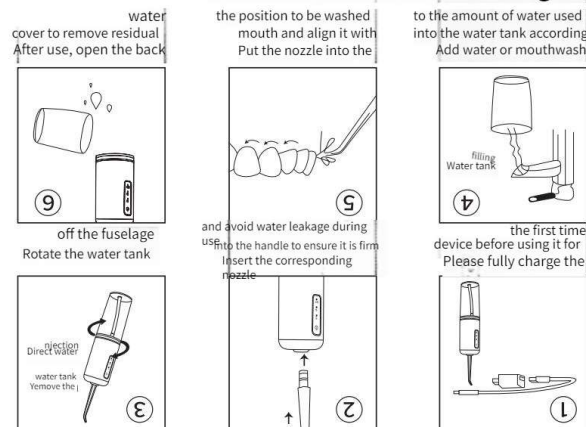
instruction manual

Disclaimer: due to the iteration of product appearance, if there is any difference between the pattern in this manual and the actual product appearance, the actual product shall prevail.



The washing sequence of the other row of teeth is the same as above. the gums in the same direction (e.g. 2 or 3) until they reach the gums of the last tooth. (e.g. 1 or 4) until they reach the gums of the last tooth. Then turn over the nozzle and flush the teeth or gums, and open the mouth slightly, so that the water can flow out smoothly. find the most suitable gear. When cleaning teeth, put the nozzle into the mouth, aim at Choose a suitable gear. It is recommended to try it from the lowest gear and gradually

Correct method of cleaning teeth

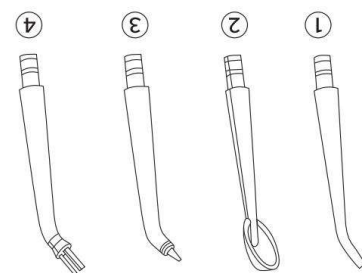


Use steps

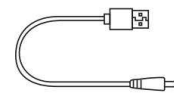
- When the instrument battery is charged, three indicator lights flash in turn, and when full, the three indicators will be on for a long time.
- Press to turn on the key shutdown. The instrument will shut down automatically for 2 minutes.
- Press for 2 seconds to switch mode to pulse, and the indicator light will also switch to corresponding indicator light, and cycle in sequence.
- Press for 2 seconds to switch mode, mode switch to strong gear, and indicator light will also switch to corresponding indicator light.
- Press the key to start the machine briefly, and the default mode is weak, and the corresponding indicator light will be on.

Operation method

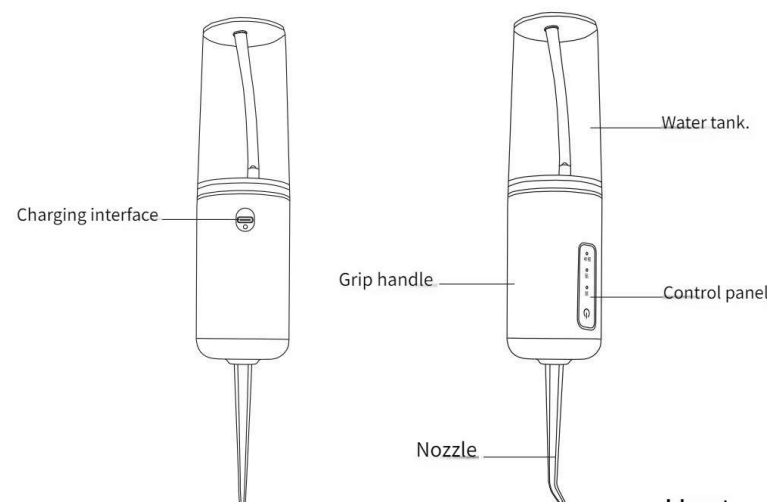
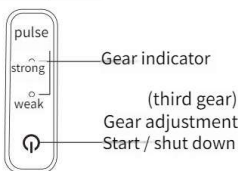
- Suitable for dental band cleaning
- 4. Orthodontic nozzle
- Special for periodontal bag cleaning
- Periodontal pocket nozzle
- Special for cleaning tongue coating
- 2. Tongue coating nozzle
- Suitable for daily cleaning
- 1. Standard Nozzle



Charging line



Control panel



Host

Structure of tooth punch

Rated power: 3.5W
Rated voltage: 3.7V ---
Charging current:
Charging voltage: 5V---

Water tank volume: 226ml
Net weight:
Product model: 138

Product parameters

of bacteria.
water tank is dry and free of water, and then store it to prevent the growth
B. If you don't use this product for a long time, please make sure that the failure or complete damage.
A. Do not immerse the whole machine in water, which may cause product

Be careful

to the oral condition.
B. Please adjust the scour intensity of pulse flow in real time according continuously to prevent inflammation.
A. Do not wash the damaged gum or bleeding place with strong gear

Be careful

first and use it after confirmation.
the past 2 months or suffered from oral problems, please consult the doctor
E. Patients with periodontal disease or those who have had oral surgery in a toy.
D. Please put it out of the reach of children and infants, and do not use it as users.
C. If children, old people or operators want to use this product, please make
B. Some functional mouthwashes may be corrosive. Please confirm the
A. Do not use this product without the installation of nozzle.

! Be careful!

- E. Do not use the power cord when it is damaged.
- D. Do not use the product in high temperature and humid environment.
- C. Do not immerse the product in water to avoid product failure.
- the
- B. Do not use the nozzle to press the gum or teeth, so as not to damage
- A. Do not use the product for any purpose other than oral cleaning.

Warning

- may explode.
- F. Avoid placing the product at high temperature, do not put it into fire, and the battery
- E. If the power cord or plug is damaged, replace the power adapter and use it again.
- completely dry.
- plug and then take out the product, and then charge it after the water stains are
- D. If the product falls into water accidentally during charging, please unplug the power
- C. Do not use water above 40 °C to flush teeth in the water tank to avoid scalding.
- shock.
- B. Do not disassemble the product without permission to avoid damage or electric
- improper operation.
- A. Please read this manual carefully before use to avoid injury or damage caused by

! DANGER!

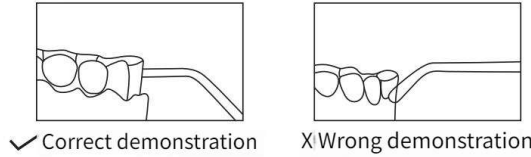
Matters needing attention

- keep fresh and clean.
- F. Help to develop a healthy habit of daily interdental cleaning, so that the teeth always
- E. For orthodontic teeth, implant teeth, tooth veneer cleaning has a good effect.
- restore clean mouth.
- D. Fast clean mouth: whether at home or eating out, it is the most effective way to quickly
- and the effect is much better than that of traditional dental floss.
- C. It can effectively remove most of the stubborn dental plaque on the surface of teeth,
- improve gingival health.
- B. Superfine water flow can clean gingival groove and deep crevices barrier free, and
- all parts of the mouth.
- A. Strong pulse water can clean up bacteria, dental stains, tartar and food residues in

Product utility

Warm tips for product use

Dental experts suggest that the first user should use the soft mode for one week, and then use the normal mode after adaptation. Press the switch button to use. The following points should be paid attention to when using: (a) The flow direction is perpendicular to the teeth or gums; (b) Move slowly along the teeth and clean them in order; (c) The nozzle is aligned vertically; (d) Thoroughly clean teeth, brackets, crowns and dentures. For the first time, do not spray water directly along the periodontal pocket for a long time, so as not to cause gingival discomfort.



Put the nozzle into the mouth before turning on the switch, so that the water will not splash. Teeth punching tip everywhere. In use, the gear gradually increases from weak to strong, and it is an adaptive stage to find the suitable gear that you can bear.

Routine maintenance

- A. If you need to clean this product, please wipe it with water or wet cloth, and then wipe the water stains on the surface with dry cloth or other dry paper towel. B. Do not immerse the product in water. C. Do not clean the product with hot water over 50 C. D. Do not bend, stretch or twist the nozzle water pipe. E. It is recommended to replace the nozzle every 3 months. Do not use this product for a long time, empty the water in the water tank and place it in a cool and dry place.

Fault diagnosis

Common problem	Possible causes	Solve the problem
Unable to work or power on. The water pressure is very low at work.	Newly purchased or not used for more than three months. Something in the nozzle is blocked.	Please charge for more than 4 hours before use. Change the nozzle.
It can only be used for a short time after charging.	The nozzle is deformed at the end of the nozzle. The battery is insufficient charging time.	Please contact customer service. Please charge for more than 4 hours before use. Please connect the power correctly.
When charging, the charging indicator does not light up or jumps disorderly.	The power supply is not connected properly. Adapter (charging head) mismatch. The product circuit is faulty.	Replace the adapter or plug it directly into the USB socket. Please contact customer service.
Do not spray water when working.	New machine or idle for a period of time unused.	1. Pull out the nozzle to flush the nozzle hole on the main body. 2. Suck hard at the nozzle.

Environmental protection instructions

Products used in this table
Portable electric tooth punch
Statement of hazardous substances
According to the requirements for identification of hazardous substances in electronic and electrical products (GB / T 26572-2011) (also known as China rohs2.0), the following parts list the names and contents of hazardous substances that may be contained in this product.

Part name	Harmful substances					
	(Pb)	(Hg)	(Cr(VI))	(PBB)	(PBDE)	
Plastic components	○	○	○	○	○	○
Hardware components	○	○	○	○	○	○
Container	○	○	○	○	○	○
Motor assembly	×	○	○	○	○	○
Battery	×	○	○	○	○	○
Data line	×	○	○	○	○	○
Circuit board	×	○	○	○	○	○

This form is compiled according to the rules of SJ / t11364 O : : indicates that the content of the hazardous substance in all homogeneous materials of the component is in GB / t26572-2011 (IEC62321).
x : indicates that the content of the hazardous substance in at least one homogeneous material of the component exceeds the limit specified in GB/T26572. But in the table above " x " The reason why the content of the components exceeds the standard is that the industry has not yet completed the production Ripe alternative technology.

10 Environmental protection service life
The mark on the product body indicates that the service life of environmental protection is 10 years. The environmental protection service life of electronic and electrical products refers to the period when the toxic and harmful substances or elements contained in electronic and electrical products will not leak out or suddenly mutate, and the users of electronic and electrical products will not cause serious pollution to the environment or serious damage to human body and property when using the electronic and electrical products. During the period of environmental protection, please use the product according to the instructions in order to better care for and protect the earth, when users no longer need this product or the life of the product is terminated, please comply with the relevant laws and regulations of the state on the recycling of waste electrical and electronic products, and hand it over to the local manufacturer with the recycling qualification recognized by the state for recycling.

Disposal of rechargeable battery
1. The built-in rechargeable lithium battery of this product contains substances that may pollute the environment. When discarding this product, please do not put it together with general household garbage, but take out the battery.
2. Be sure to turn off the power or cut off the power before decomposing the product and taking out the lithium battery.
3. To take out the lithium battery, pry the buckle of the upper cover of the product, open the upper cover of the product, and then take out the lithium battery.
4: The removed lithium batteries should be safely disposed of or put into the battery recycling center designated by the government, which is conducive to environmental protection. Special tips: take out the battery only when discarding the product. Please make sure that the battery is exhausted before taking it out. Non professionals should not remove it.

Recovery

When discarding the recycled products, please do not throw them together with the general household garbage, but give them to the designated recycling center. Everyone is responsible for protecting the environment!

Quality Assessment

This is to ensure that the product is of good quality, reliable performance, safe and practical. In order to solve the customer's worries, the company is responsible for the quality and after-sales service, which can be handled with this card.
1. If the main parts of the product break down during normal use within three months, repair and replace the parts free of charge.
2. When repairing, you should bring the receipt and warranty card to confirm the warranty period.
3. The warranty period is three months.

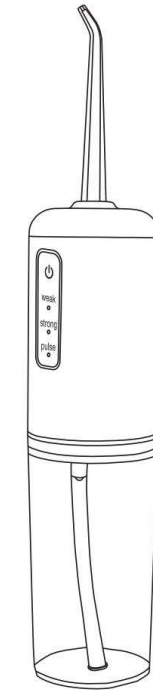
Be careful
1. Abnormal use and man-made damage are not covered by the warranty.
2. If the customer disassembles the machine by himself, the warranty will be cancelled.
Date of purchase: _____
Place of purchase: _____

Certificate qualified

Test results: _____
examination clerk: _____
: _____
Inspection date: _____

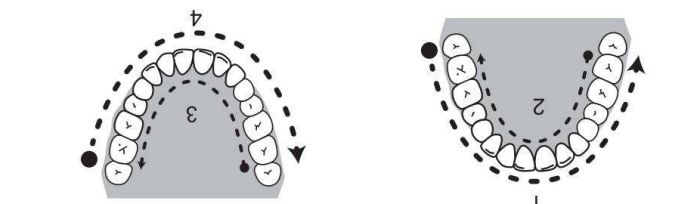


Portable electric tooth flusher



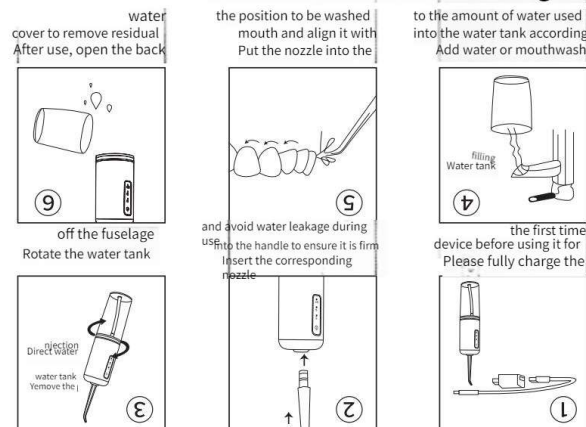
instruction manual

Disclaimer: due to the iteration of product appearance, if there is any difference between the pattern in this manual and the actual product appearance, the actual product shall prevail.



The washing sequence of the other row of teeth is the same as above. the gums in the same direction (e.g. 2 or 3) until they reach the gums of the last tooth. (e.g. 1 or 4) until they reach the gums of the last tooth. Then turn over the nozzle and flush the teeth or gums, and open the mouth slightly, so that the water can flow out smoothly. find the most suitable gear. When cleaning teeth, put the nozzle into the mouth, aim at Choose a suitable gear. It is recommended to try it from the lowest gear and gradually.

Correct method of cleaning teeth

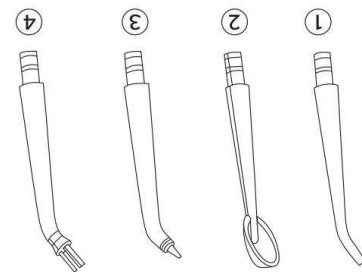


Use steps

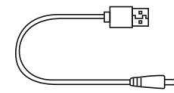
- When the instrument battery is charged, three indicator lights flash in turn, and when full, the three indicators will be on for a long time.
- Press to turn on the key shutdown. The instrument will shut down automatically for 2 minutes.
- Press for 2 seconds to switch mode to pulse, and the indicator light will also switch to corresponding indicator light, and cycle in sequence.
- Press for 2 seconds to switch mode, mode switch to strong gear, and indicator light will also switch to corresponding indicator light.
- Press the key to start the machine briefly, and the default mode is weak, and the corresponding indicator light will be on.

Operation method

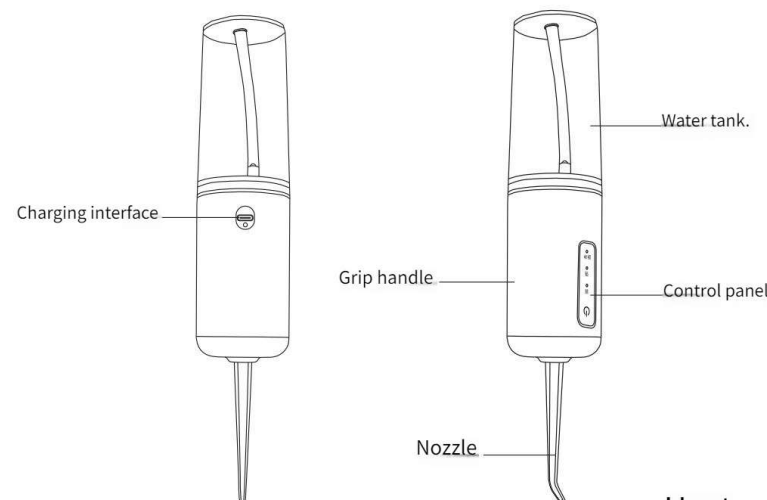
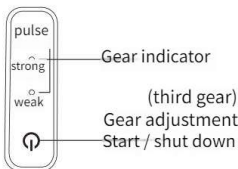
Suitable for dental band cleaning
4. Orthodontic nozzle
Special for periodontal bag cleaning. Periodontal pocket nozzle
Special for cleaning tongue coating
2. Tongue coating nozzle
Suitable for daily cleaning
1. Standard Nozzle



Charging line



Control panel



Host

Structure of tooth punch

Rated power: 3.5W
Rated voltage: 3.7V ---
Charging current: 240mg
Charging voltage: 5V---
Water tank volume: 226ml
Net weight: 240g
Product model: 138

Product parameters

of bacteria.
water tank is dry and free of water, and then store it to prevent the growth of bacteria.
B. If you don't use this product for a long time, please make sure that the water tank is dry and free of water, and then store it to prevent the growth of bacteria.

A. Do not immerse the whole machine in water, which may cause product failure or complete damage.
Be careful
to the oral condition.
B. Please adjust the scour intensity of pulse flow in real time according to the oral condition continuously to prevent inflammation.

A. Do not wash the damaged gum or bleeding place with strong gear pulse flow.
Be careful
first and use it after confirmation.
the past 2 months or suffered from oral problems, please consult the doctor.

E. Patients with periodontal disease or those who have had oral surgery in the past 2 months or suffered from oral problems, please consult the doctor before use. Do not use them indiscriminately.
D. Please put it out of the reach of children and infants, and do not use it as a toy.
C. If children, old people or operators want to use this product, please make sure to read the instructions and instructions the users.
B. Some functional mouthwashes may be corrosive. Please confirm the use of mouthwash before use.
A. Do not use this product without the installation of nozzle.

! Be careful!

- E. Do not use the power cord when it is damaged.
- D. Do not use the product in high temperature and humid environment.
- C. Do not immerse the product in water to avoid product failure.
- the gums
- B. Do not use the nozzle to press the gum or teeth, so as not to damage the gums.
- A. Do not use the product for any purpose other than oral cleaning.

Warning

- may explode.
- F. Avoid placing the product at high temperature, do not put it into fire, and the battery will be damaged.
- E. If the power cord or plug is damaged, replace the power adapter and use it again.
- completely dry.
- plug and then take out the product, and then charge it after the water stains are completely dry.
- D. If the product falls into water accidentally during charging, please unplug the power cord and then take out the product, and then charge it after the water stains are completely dry.
- C. Do not use water above 40 °C to flush teeth in the water tank to avoid scalding.
- shock.
- B. Do not disassemble the product without permission to avoid damage or electric shock.
- improper operation.
- A. Please read this manual carefully before use to avoid injury or damage caused by improper operation.

! DANGER!

Matters needing attention

- keep fresh and clean.
- F. Help to develop a healthy habit of daily interdental cleaning, so that the teeth always stay fresh and clean.
- E. For orthodontic teeth, implant teeth, tooth veneer cleaning has a good effect.
- restore clean mouth.
- D. Fast clean mouth: whether at home or eating out, it is the most effective way to quickly clean the mouth, and the effect is much better than that of traditional dental floss.
- C. It can effectively remove most of the stubborn dental plaque on the surface of teeth, improve gingival health.
- B. Superfine water flow can clean gingival groove and deep crevices barrier free, and improve gingival health.
- A. Strong pulse water can clean up bacteria, dental stains, tartar and food residues in all parts of the mouth.

Product utility