

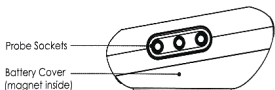
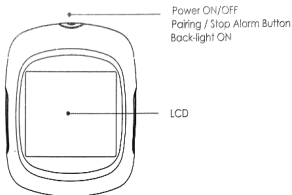
USER MANUAL

FOR

EasyBBQ^{pro}

Smart Wireless BBQ Thermometer

Get to know the Device



Probe with cable

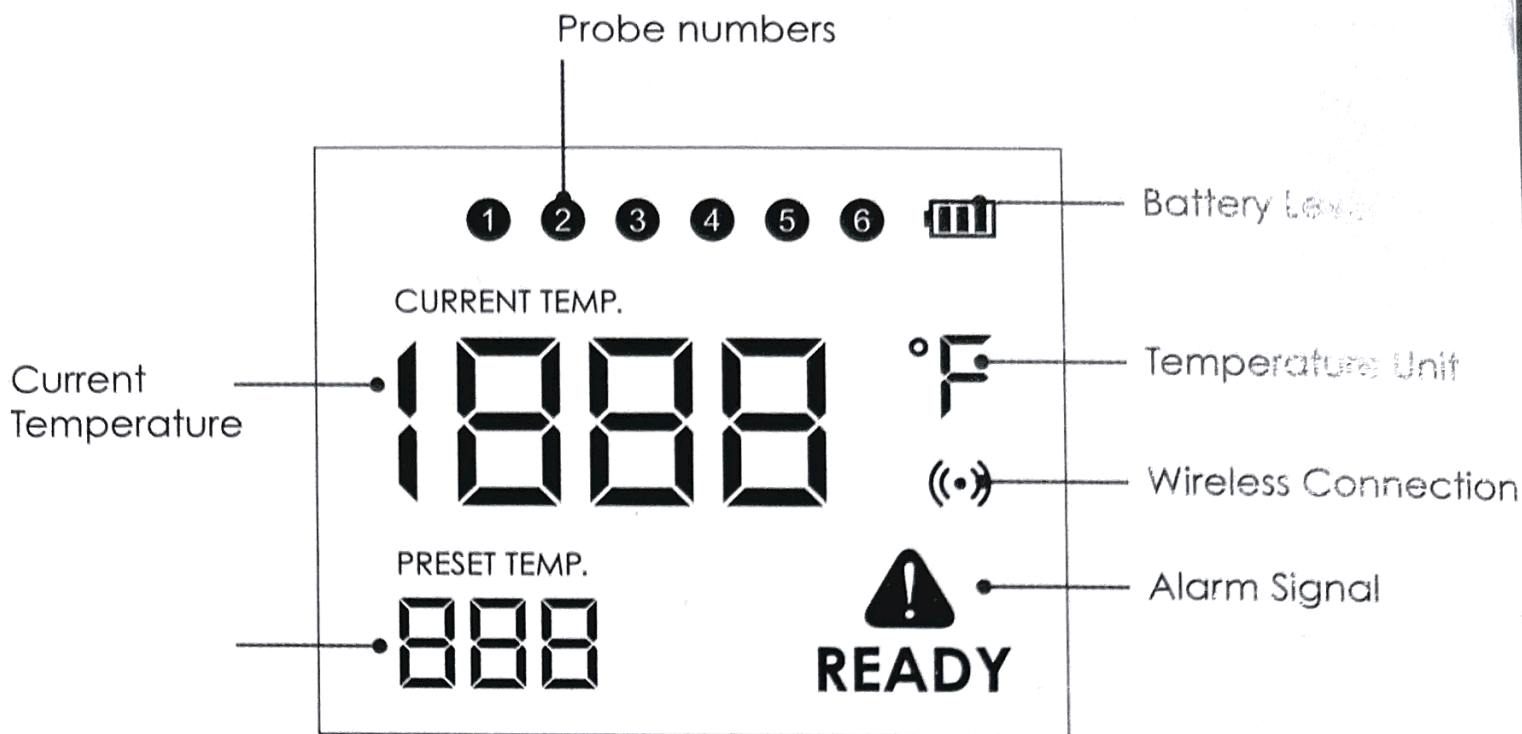


Probe Wrap



AA Battery

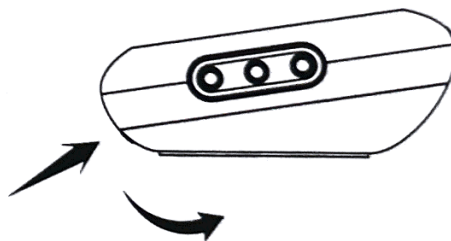
The device provides 6 sockets for probes, which enable you monitor 6 items at once.



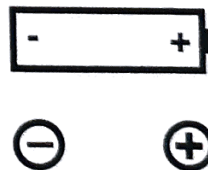
Put in the Battery

2 AA size batteries are needed for this device. Make sure they are put in the right direction by following the icons on the unit.

- 1 Press the lock of the battery cover and rotate to open.



- 2 Put in batteries, noticing the icons which show directions.



- 3 Put back the battery cover.

Install the probes

The device will keep scanning the sockets when its power is switched on.

Download the APP

Search the keyword ' **easyBBQ** ' in Appstore or Google Play, or scan the following QR code with your phone.

Download and install it for free.

Make sure your phone meets the requirements:

iPhone 4S, and later models;

iPod touch 5th, iPad 3rd generations and later models,

all ipad mini;

Android devices running version 4.3 or later, with blue-tooth 4.0 module.



Power ON/OFF

Press and hold the button for more than 3 seconds when it is in OFF mode, it will be powered on. And the LCD display will show 'ON' with a beep sound. If you do the same when it is in ON mode, it will be powered off.

When this is no probe inserted in the device, it will powered off automatically.

Pair with your phone

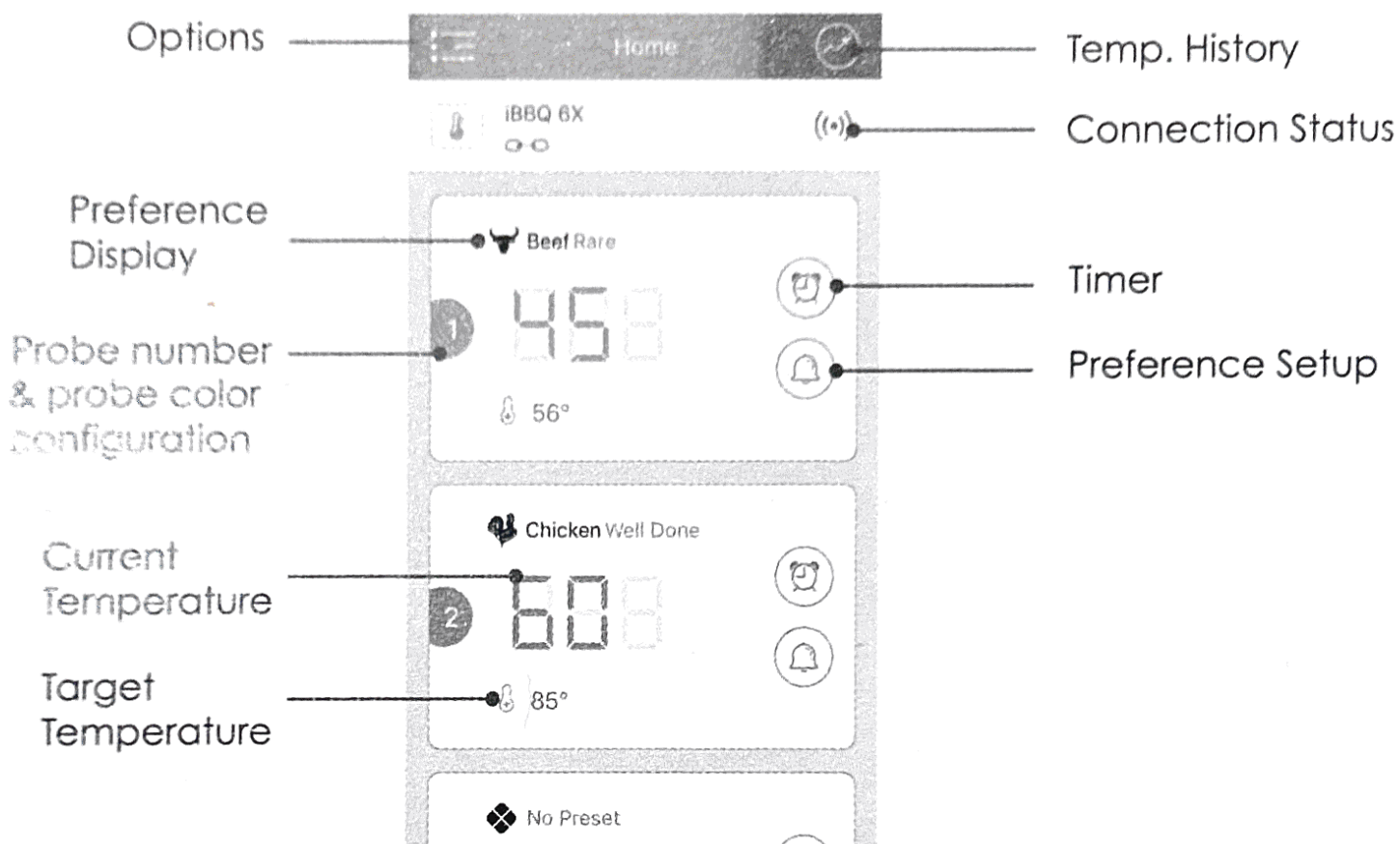
- 1 Switch on your device and keep the blue-tooth switch of your phone on.
- 2 Launch the app, and follow the instructions in the app to pair and activate the device:
Press the Pairing / Stop Alarm Button (on the top of the device).
- 3 Connected successfully.

Once Paired the device with your phone, you don't need

Enjoy your barbecue time

Choose food type and preference for the food where each probe is inserted, the app and the device will display its current and target temperature.

When the food is ready, the app and the device will alarm.



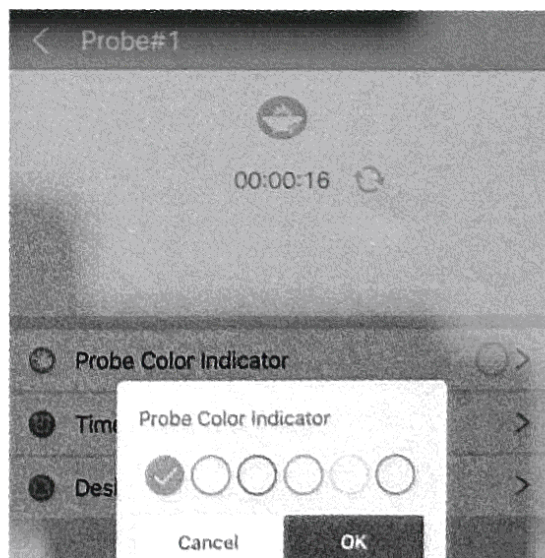
The user interface of the app may be changed when upgrade. Please follow the instructions in the app.

Probe color configuration

It's getting difficult for you to distinguish different probes when you have several probes in use.

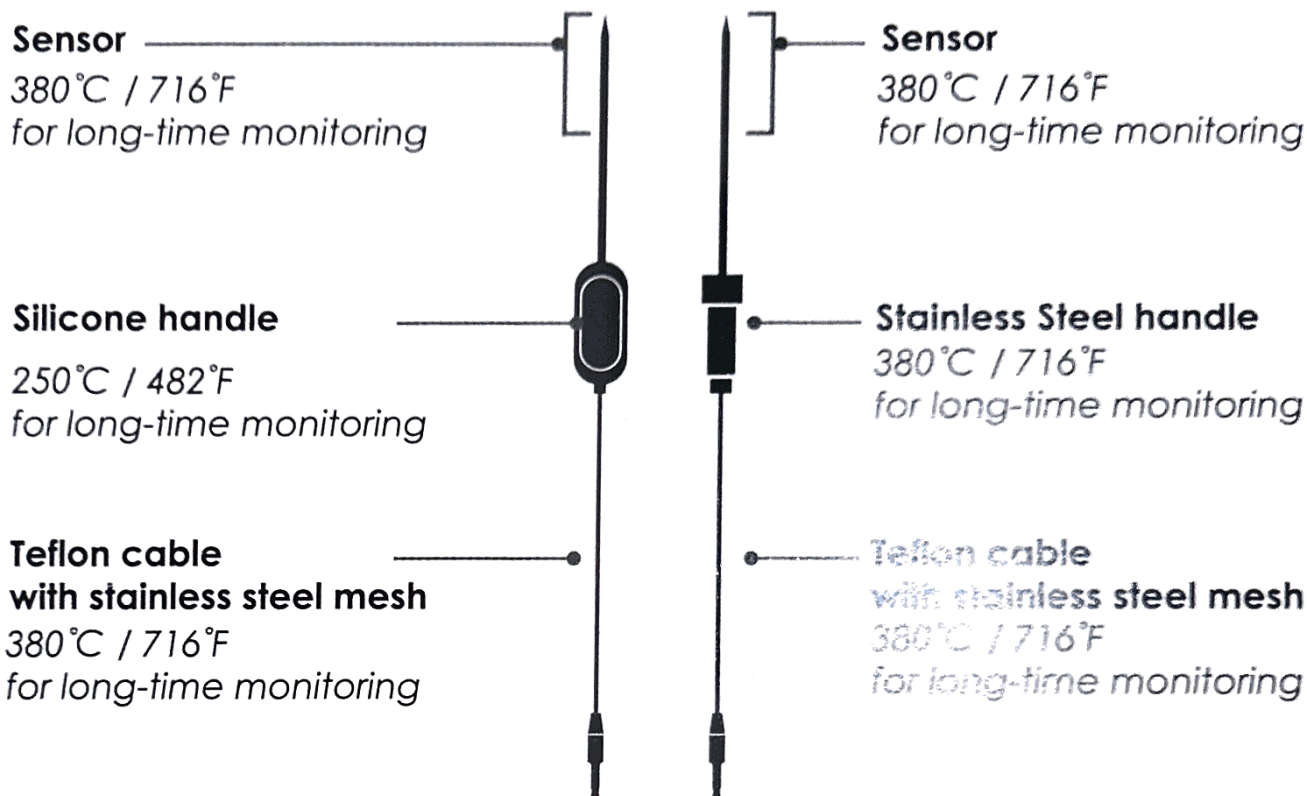
The app provides 6 colors for each channel, which enable users set them to be identical to the color of the probes.

The probes come in 6 colors as well.



WARNING

The heat resistance varies in different components of the probe,
DO NOT put the probes directly in fire flame.
DO NOT put the wrap into oven, or it will melt!
And probes are NOT dishwasher safe.



ABS Wrap

80°C / 176°F

Operation Is Subject To The Following Two Conditions:

(1) This device may not cause interference, and (2) This device must accept an interference, including interference that may cause undesired operation of this device.

App Store is a service mark of Apple Inc.

Google Play is a service mark of Google Inc.

