



USB-C Hub 6 in 1

P.1 Nederlands – Gebruikershandleiding
P.4 Engels – User Manual
P.6 Legal Information – Read before use

01-NL

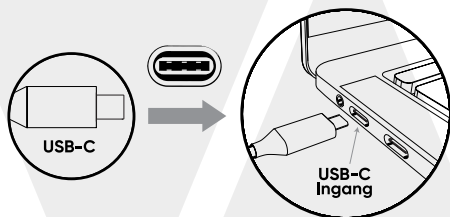
INTRODUCTIE

Het Siltcon-team bedankt u voor uw aankoop van onze USB-C-hub. Deze is ontworpen om uw computerervaring eenvoudiger te maken. We adviseren u onze meegeleverde gebruiksaanwijzing te raadplegen voor ondersteuning. We hopen dat u geniet van het gemak dat deze hub biedt. Voor verdere assistentie kunt u ons bereiken via klantenservice@siltcon.nl.

VERPAKKINGSINHOUD

1x 6 in 1 USB-C-hub
1x Handleiding

HOE TE GEBRUIKEN?



OPMERKINGEN:

- Controleer voordat u uw apparatuur en aansluitkabel gebruikt of deze correct functioneren.
- De USB-C-interface is ontworpen om voorwaartse en achterwaartse plug-and-play te ondersteunen, waardoor het niet meer nodig is om stuurprogramma's voor de HUB te installeren.
- Het is belangrijk om het apparaat te verwijderen volgens de gegeven systeemspecificaties. Als u dit negeert, kan dit leiden tot gegevensverlies of mogelijke schade aan de apparatuur.

ALS HET PRODUCT NIET GOED WERKT, CONTROLEER DAN HET VOLGENDE:

- (1) Koppel de USB-C-hub los, start de computer opnieuw op;
- (2) Controleer of alle kabels goed zijn aangesloten;
- (3) Voor meer problemen kunt u contact met ons opnemen: klantenservice@siltcon.nl

02-NL

PRODUCT SPECIFICATIES

Model	6-in-1 USB-C-hub
Materiaal	Aluminiumlegering
Interfaces	3* USB 3.0 1* HDMI 4K (1 scherm = 3840x2160 @30Hz) 1x USB-C PD
Afmetingen	170*68*17MM
Gewicht	63g
Certificering	CE FCC ROHS
Ondersteuning	Universeel, inclusief Mac OS/Windows/Android
Plug-and-Play	U hoeft geen stuurprogramma's te installeren

PRODUCTPARAMETERS

PD-oplaadpoort	Ondersteuning voor PD3.0, maximaal vermogen van 100 W.
1 HDTV-poort	1* HDMI 4K (1 scherm = 3840x2160 @30Hz)
USB 3.0-poort	Voldoet aan de USB 3.0-specificatie, overdrachtsnelheid tot 5 Gbps en compatibel met USB 2.0/1.1.

SMART-KNOP

Deze 6-in-1 hub is uitgerust met een unieke feature, namelijk een speciale knop op de bovenkant. Door deze te gebruiken, kun je heel gemakkelijk het scherm aan- en uitschakelen. Dit is erg nuttig zowel voor je privacy als voor het besparen van energie.



Veiligheidsinformatie

- (1) Vermijd opslag van het product in een omgeving die corrosie kan veroorzaken.
- (2) Gebruik wordt niet aanbevolen bij extreme temperaturen of in vochtige of stoffige ruimtes. Langdurige directe blootstelling aan zonlicht of vuurbronnen moet ook worden vermeden.
- (3) Het product presteert het beste bij omgevingstemperaturen tussen 0 en 45 graden Celsius.

03-NL

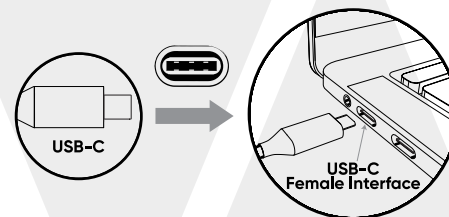
INTRODUCTION

We from the Siltcon team would like to thank you for choosing our USB-C hub. This product is designed to simplify your computer use. We recommend following the attached user manual for assistance. Hopefully you enjoy the convenience. If you need further assistance, we can be reached via customerservice@siltcon.nl.

PACKAGE CONTENTS

1x 6 in 1 USB-C Hub
1x Manual

HOW TO USE?



REMARKS:

- Before using your equipment and connecting cable, check that they function correctly.
- The USB-C interface is designed to support forward and reverse plug-and-play, eliminating the need to install drivers for the HUB.
- It is important to remove the device according to the given system specifications. Ignoring this may result in data loss or possible damage to the equipment

IF THE PRODUCT DOES NOT WORK PROPERLY, PLEASE CHECK THE FOLLOWING:

- (1) Disconnect the USB-C hub, restart the computer;
- (2) Check whether all cables are properly attached;
- (3) For more problems, please contact us: customerservice@siltcon.nl

04-EN

PRODUCT SPECIFICATIONS

Model	6 in 1 USB-C Hub
Material	Aluminum alloy
Interfaces	3* USB 3.0 1* HDMI 4K (1 screen = 3840x2160 @30Hz) 1x USB-C PD
Dimensions	170*68*17MM
Weight	63g
Certification	CE FCC ROHS
Support Universal	Including Mac OS/Windows/Android
Plug and Play	No need to install drivers

PRODUCT PARAMETERS

PD charging port	PD charging port: support PD3.0, 100W maximum power.
1 HDTV port	1 HDTV port: 1* HDMI 4K (1 screen = 3840x2160 @30Hz)
USB 3.0 port	USB 3.0 port: Compliant with USB 3.0 specification, transfer speed up to 5 Gbps and compatible with USB 2.0/1.1.

Smart Button

This 6-in-1 hub comes equipped with a unique feature, a special button on the top. By using this, you can easily switch the screen on and off. This is very useful for both your privacy and for saving energy.



SAFETY INFORMATION

- (1) Avoid storing the product in an environment that may cause corrosion.
- (2) Use is not recommended in extreme temperatures, or in damp or dusty areas. Prolonged direct exposure to sunlight or fire sources should also be avoided.
- (3) The product performs best at ambient temperatures between 0 and 45 degrees Celsius.

05-EN

READ BEFORE FIRST USE

To begin, please unpack all components from the packaging and remove any stickers and foil. Proceed to inspect each item to ensure that no damage has been sustained and that no parts are missing. If a component is missing or appears to be damaged, do not use the product. Instead, please reach out to our customer service team at customerservice@siltcon.nl for further assistance.

BE AWARE WITH CHILDREN

Plastic Bags and Films:

To evade the potential risk of suffocation, it is of utmost importance to keep plastic bags and films out of reach from infants and children. These thin films can adhere to their nose and mouth, obstructing their ability to breathe.

Risk of Strangulation:

Cables, cords, and strings extending further than 18 CM (7 inches) may present a risk to infants and very young children, as they may become entwined while playing. Ensure to properly store the cord to avoid potential incidents.

RECYCLE INFORMATION

Batteries, electrical and electronic equipment (EEE) contain materials, components and substances that can be hazardous to the environment and harmful to human health if waste electrical and electronic equipment (WEEE) is not disposed of correctly. Batteries, electrical and electronic equipment marked with the WEEE logo (as shown below) should not be disposed of with household waste. Contact your municipality's waste management department. They can inform you about the recycling options in your region. Dispose of all packaging materials in an environmentally friendly manner.

WARRANTY

Under the Siltcon warranty, this product is guaranteed free from material and manufacturing defects for one year from the date of purchase. This warranty applies to personal use only. In the event of any defects within this period, Siltcon reserves the right to repair or replace the product or parts at its sole discretion. This warranty is limited to the original purchaser and requires proof of purchase. The warranty is not transferable and does not apply to negligent use of the product, loss of voltage or amperage, water damage, use contrary to the manual, repairs by non-siltcon parties, accident or disaster damage and normal wear and tear. Siltcon is not liable for consequential damage or damage due to improper use and reserves the right to change specifications, colors, accessories, materials, and models without notice.

CONFORMITY

Siltcon (hereinafter: Inweath BV) hereby declares that this product complies with the EMC guidelines.

2014/30/EU

EN 55032:2015+A1:2020, EN55035:2017+A1:2020, EN IEC 61000-3-2:2019: A1:2021, EN 61000-3-3:2013/A2:2021
EN 61000-4-2:2009, EN IEC 61000-4-3:2020, EN 61000-4-4:2012, EN 61000-4-5-2014+A1:2017
EN 61000-4-6:2014/AC:2015, EN 61000-4-8-2010, EN IEC 61000-4-11:2020

WARNING

The contents of this document are presented as they currently exist. Inweath BV, accepts, expressly or tacitly, any warranty for the accuracy or completeness of the contents of this document. Inweath BV, reserves the right to make changes to this document or to withdraw it completely at any time without notice.

Imported by:
Siltcon® (Inweath BV).
Trompsstraat 35
1275X Huizen
The Netherlands
Info@siltcon.nl

06-EN- Legal Information