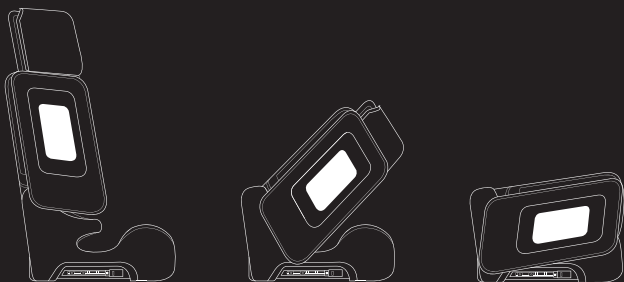


hamilton.

by YOOP™

Instruction Manual

CABRIO



ECE R44/04
UNIVERSAL ISOFIX
UNIVERSAL
SEMI-UNIVERSAL
9-36 kg Y

E1

04301403
GROUP I II III

FOLDABLE CHILD SAFETY SEAT

ECE-GROUP I - III , 9 - 36kg
approx. 9 months to 12 years



ISOFIX



TOP TETHER

DUTCH
Design

IMPACT
PROTECTION



Table of contents

Thank you for purchasing the Hamilton Cabrio Group 1,2,3 Foldable Car Seat. Please read these instructions carefully before use to ensure safe and satisfactory operation of this product.

Your child's safety is your responsibility.

This seat can either be fitted using the ISOFIX system (also known as ISOFIX) in conjunction with the vehicle's 3-point safety belt or by just using just a standard 3-point vehicle seat belt. It is advised that if your vehicle has ISOFIX anchor points then the seat should be fitted using the ISOFIX system.

Content

Welcome	2
Safety information	3-5
Parts Checklist	6
Unfolding the car seat	7
Positioning the car seat	8-9
Adjusting the headrest/harness height	9-10
Fitting the car seat using the ISOFIX system	11-12
Removing the ISOFIX fitted car seat	13
Placing your child in the seat - group 1 [9-18kg]	13-14
Removing the 5-point harness	15
Replacing the 5-point harness	16
Placing your child in the seat - groups 2,3 [15-36kg]	17
Folding the car seat	18-19
Removing and replacing the seat covers	19
Care & maintenance/ Warranty	20-21

NOTICES

1. This child car seat is approved for three different types of fitting:
 - a) "Universal ISOFIX" for use as a group 1 [9-18kg] car seat locked onto the vehicle's ISOFIX anchor points in conjunction with the car seat's integral 5-point harness.
 - b) "Semi-Universal" with connectors locked onto the vehicle's ISOFIX anchor points, used in conjunction with the vehicle's 3-point safety belt.
 - c) "Universal" for use with just the vehicle's 3-point safety belt.
2. This is a "Universal" child restraint for groups 2,3 [15-36kg]. It is approved to ECE R44.04 for general use in vehicles and will fit most, but not all, car seats.
3. A correct fit is likely if the vehicle manufacturer has declared in the vehicle handbook that the vehicle is capable of accepting a Universal child restraint for the stated age group.
4. This child restraint has been classified as UNIVERSAL under more stringent conditions than those which applied to earlier designs which do not carry this notice.
5. If in doubt, consult either the manufacturer or the retailer.
6. Only suitable if the approved vehicles are fitted with 3-point/static/retracting seat belts which are approved to ECE R16 or equivalent.
7. This is an ISOFIX CHILD RESTRAINT SYSTEM. It is approved to ECE R44.04 for general use in vehicles fitted with ISOFIX anchorage systems.
8. It will fit vehicles with position approved ISOFIX attachment points (consult the vehicle handbook), depending upon the category of the child seat and of the ISOFIX fixture position.
9. The mass Group and the ISOFIX weight range for which this device is intended is: Group 1 9-18kg, ISOFIX size class B1

Getting started

Read carefully before attempting to fit the child car seat.

WARNING: NEVER leave your child unattended – your child's safety is your responsibility.

WARNING: The child car seat must be fitted in accordance with the manufacturer's instructions. Incorrect installation could be dangerous.

WARNING: This installation must only be performed by a competent adult. Don't try to install the seat when intoxicated or drowsy.

WARNING: Always ensure that new or occasional users [e.g. Grandparents] have read the instructions or been taught the correct installation by someone who has read and understood the instructions.

WARNING: Always keep this instruction manual with the child car seat, or in the vehicle in which you are carrying the child car seat. Some models of child car seat have a pocket to store the instructions.

Before starting

WARNING: Do not fit the child car seat on a side or rear facing vehicle seat.

WARNING: Before installing the child car seat ensure that the passenger seat you are using is locked in the upright position.

WARNING: Do not use the child car seat in the home - it has only been designed to be used in the car.

WARNING: Do not leave loose/unsecured objects on the back seat of your car or the parcel shelf. They may be dangerous to your child if you are forced to brake suddenly.



Which is the safest passenger seat for the child seat?

If your centre rear passenger seat is fitted with a three point seatbelt system then you should use it.

If your centre rear passenger seat does not have a three point seatbelt system (i.e. No seatbelt at all, or only a lap belt)

- Then you should use the rear left passenger seat or the rear right passenger seat.

The front passenger seat can only be used if it DOES NOT have an airbag and IS fitted with a three point seatbelt system.

EXTREME HAZARD

NEVER USE IN FRONT PASSENGER SEATS EQUIPPED WITH AIRBAGS (SRS). THIS CAN INCLUDE REAR PASSENGER SEATS THAT ARE EQUIPPED WITH AIRBAGS*

*Consult car manufacturer for suitability. Children's bodies are not able to withstand the forces exerted on them by a deploying air-bag

When using the child car seat

WARNING: Make sure that the child car seat is placed somewhere so that rigid items and plastic parts do not become trapped in doors or movable seat units when the seat is in everyday use.

WARNING: Always use the vehicle's door child safety lock system, if one is available, to make it impossible for the child to open the car doors from inside.

WARNING: Allow the child a break during long car journeys and make sure they don't get out of the car unaided and without supervision.

WARNING: The child car seat must be fitted securely to the passenger seat. Ensure that it is not loose or wobbly after you have fitted it. If it is loose, re-fit it.

WARNING: The child car seat must not be used without its original cover. The original cover is essential for the safe operation of the child car seat.

WARNING: Stop the car at regular intervals to check that the child car seat is in the correct position and that both the car seatbelt (if used) AND the child car seat harness are still taut and latched.

WARNING: Ensure that no part of the child car seat is trapped in a door or folding seat.

WARNING: In the event of an emergency it is important to be able to release the child quickly (as defined by British Standards). This means that the seat buckle cannot be fully tamper proof and you should actively discourage your child from playing with or using the buckle.

WARNING: If you travel with passengers using both the front and the rear passenger seats, the lighter occupants should be in the rear and the heavier occupants in the front.

WARNING: If you have no option other than to put your child car seat on a rear passenger seat next to side airbags:

- Consult with your vehicle manufacturer for side airbag details. It may not be safe.

- Make sure your child does not lean into the area immediately around the airbag.

WARNING: Do not place anything under the child car seat (e.g. A towel or cushion) as this could affect the performance of the seat in an accident.

WARNING: Avoid winter clothing bundling - bulky clothing can lead to incorrect harness tightening. In an accident, the child can slip right out of the extra padding - and thus out of the seat. Let the car warm up or cool down prior to placing your child in there if possible. If your child is cold, place a blanket over the top of the harness.



Seatbelt

WARNING: Never use any load bearing contact points other than those described in these instructions or marked on the child car seat.

WARNING: Ensure that the lap section of the harness is worn low down, so that the pelvis is firmly engaged.

WARNING: Make sure that ALL the passengers in your vehicle have their seatbelts fastened, as unrestrained people can be very dangerous to the child in an accident.

WARNING: NEVER use a seatbelt routing scheme that differs from these instructions.

WARNING: The harness must be used at all times when your child is in the child car seat.

WARNING: If you are installing the child car seat using a seatbelt ensure there are no twists in the seatbelt.

Sunlight/hot days

WARNING: Don't leave your child in the child car seat while parked in direct sunlight or on a hot day.

WARNING: Do not subject the child car seat to prolonged direct sunlight as this may be dangerous for your child (the metal and plastic fittings could become hot) and may cause the fabric to fade. You can reduce this problem by covering the child car seat with a sheet when not in use.

Back of the seat/headrest

WARNING: Ensure that the child car seat is as close as possible to the backrest of the car seat.

WARNING: REMOVE the headrest of the passenger seat being used if it obstructs the proper installation of the child car seat. REMEMBER to refit the headrest when the child car seat has been removed.

Second hand or damaged child car seats and seatbelts

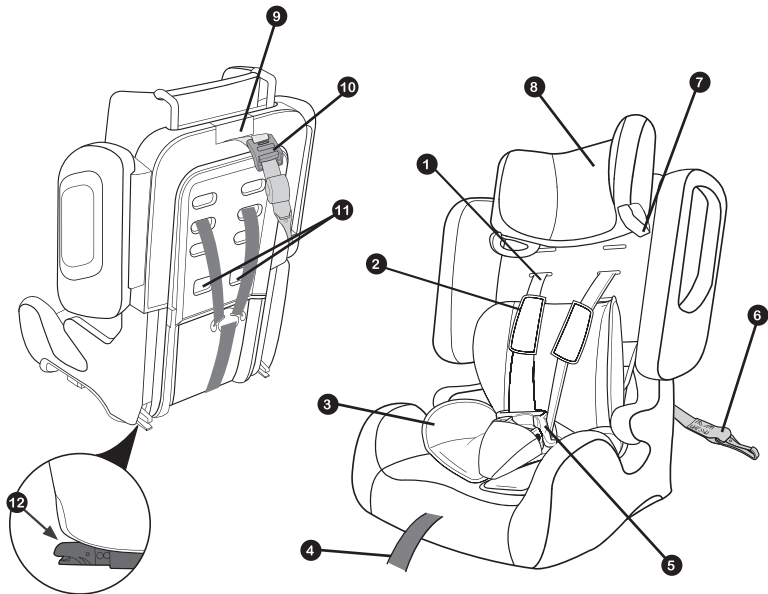
WARNING: NEVER buy a second hand child car seat. It may have unseen damage.

WARNING: The manufacturer only guarantees this product when the original owner uses it.

WARNING: You MUST replace the child car seat and your vehicles seatbelts if they become badly worn or damaged.

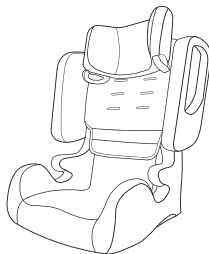
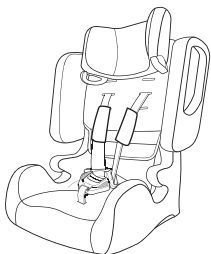
WARNING: You MUST replace the child car seat if it is involved in an accident – it may have unseen damage and may not protect your child as well as they should. At the very least send the child car seat to the manufacturers for inspection, together with the accident report.

Part Checklist



- | | | | |
|---|------------------------|----|--------------------------|
| 1 | Shoulder straps | 7 | Shoulder belt guides |
| 2 | Shoulder pads | 8 | Headrest |
| 3 | Insert cushion | 9 | Headrest adjuster button |
| 4 | Harness adjuster strap | 10 | Top tether mechanism |
| 5 | Harness buckle | 11 | Fold or unfold button |
| 6 | Top tether hook | 12 | ISOFIX arms |

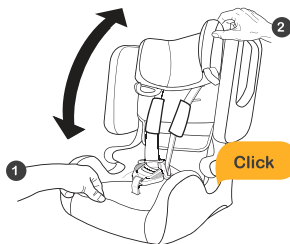
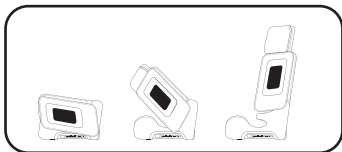
Unfolding the car seat



1. Cabrio child restraint system for the age groups 1,2 and 3 ,body weight 9-36 kg, to be secured with ISOFIX and top tether in the vehicle, and with separate 5-point harness to secure a Group 1 child. Checked and approved according to ECE 44 / 04 and GB27887-2011 for a series of tests such as a frontal crash, misuse test at 50km/h and so on. The child restraint system can be used on all forward-facing seats within the vehicle, provided that they are fitted with ISOFIX and Top-tether anchorages.



1. Open the package and take out the child restraint system.



2. Press the base of the child restraint system with one hand, (1) and pull the backrest of the restraint system towards the back of the car seat at the same time until a "click" is heard,(2) which indicates that the child restraint system has been opened correctly.

Positioning the car seat

The child car seat **MUST ONLY** ever be used on a forward facing passenger seat **WITHOUT** an active airbag. Whilst in group 1 mode, the child car seat can only be installed using the ISOFIX anchor points **WITH** the top tether. It **MUST NOT** be installed with out the top tether whilst in group 1 mode.

Whilst in group 2 and 3 modes, the child car seat can be installed using either the ISOFIX anchor points or the vehicle's 3-point seatbelt.

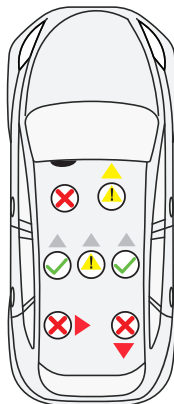
WARNING: The top tether MUST NOT be used if installing the seat using only the 3-point seatbelt.

WARNING: Never attempt to use a 2-point seatbelt to secure the seat.

WARNING: Never use on a seat with an active airbag.

WARNING: Never use on rearward or side facing vehicle seats.

Position	ISOFIX*	Seat belt type	
		3-point	2-point
Front passenger seat (no active airbag)	Yes	Yes	NO
Front passenger seat (active airbag)	NO	NO	NO
Back left & right seats	Yes	Yes	NO
Back centre seat	Yes	Yes	NO
Side or rear facing seats	NO	NO	NO

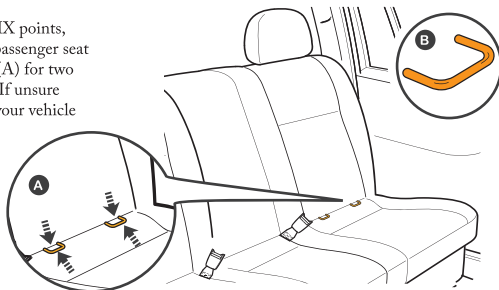


* If fitting the car seat using ISOFIX in group 1 mode, then your vehicle **MUST** have top tether anchor points and you **MUST** use the top tether system.

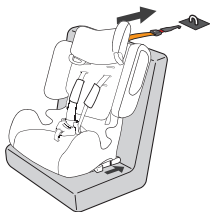
The top tether is **not** necessary in group 2 & 3 modes .

The top tether **MUST NOT** be used for non-ISOFIX installation.

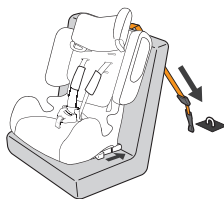
1. To check if you have ISOFIX points, feel between the joint of the passenger seat back and passenger seat base (A) for two metal brackets similar to (B). If unsure or in any doubt then consult your vehicle manufacturer.



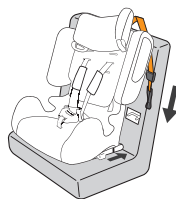
Positioning the car seat (continued)



Type 1



Type 2



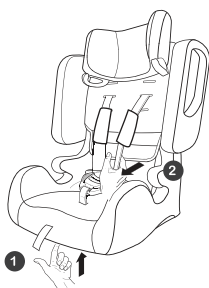
Type 3

2. Locate your vehicle's top tether anchor points. These may be either located high up near a parcel shelf (Type 1), or low down on the vehicle floor (Type 2) or on the back of the passenger seat (Type 3).

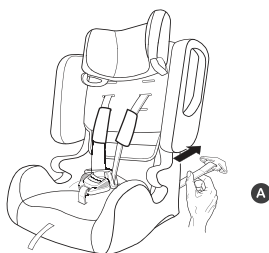
WARNING! DO NOT attempt to use the car seat in group 1 mode with out a top tether. The top tether MUST be used in group 1 mode.

Adjusting the harness height

Note: The headrest/harness will only adjust as far as needed whilst in group 1 mode. Once the integral harness is removed for groups 2 and 3 the headrest will adjust to a greater degree as needed.

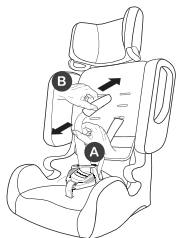


1. Loosen the belt system. Press the central adjuster (1) upwards and pull the shoulder straps (2) .

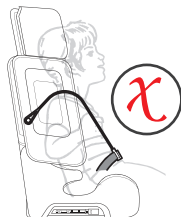
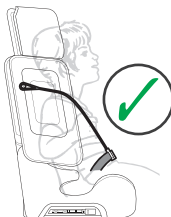


2. Remove the two shoulder straps from the connecting piece from the back of the child restraint system. (A)

Adjusting the harness height (continued)



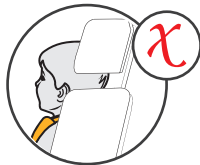
3. Then pull out the two shoulder straps and shoulder pads from the front (A) and pass through the upper shoulder straps hole again, and then put the two shoulder straps into the connecting piece.(B)



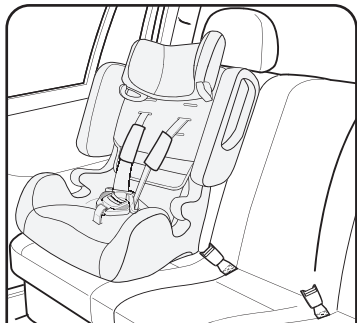
4. Ensure the harness is at the correct height for yourchild's shoulders and not too high or too low.



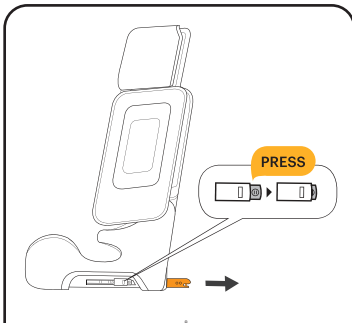
1. Press the "PRESS HERE" button (A) and pull the head rest to raise or lower the headrest as needed.(B)



Fitting the car seat using the ISOFIX system



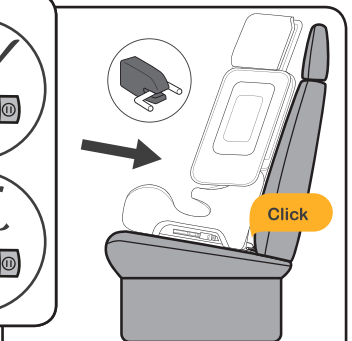
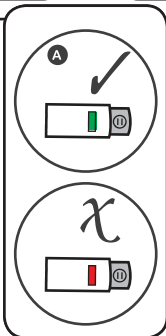
1. Place the car seat on a suitable passenger seat.



2. Press the grey ISOFIX release buttons on each side of the car seat base and pull out both ISOFIX arms as far as they will go.

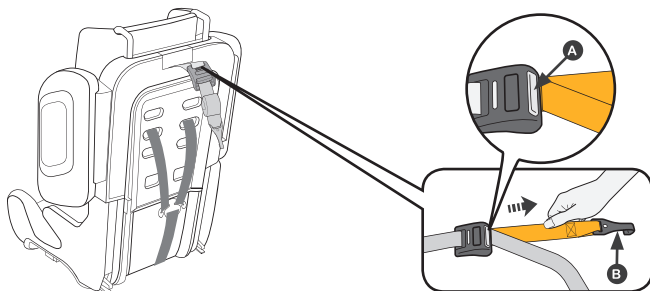


3. Line up the car seat's two ISOFIX arms with the vehicle's ISOFIX mounting points and carefully push the car seat backwards onto the two ISOFIX mounting points till the arms click into position.

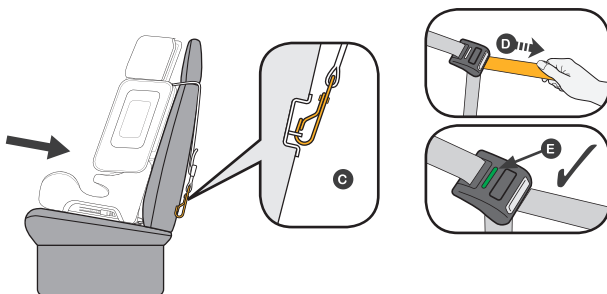


4. Check the indicator on the side of each ISOFIX arm has turned "green" (A) indicating the seat is locked securely in position and then push the seat all the way back so it is tight against the passenger seat.

Fitting the car seat using the ISOFIX system (continued)

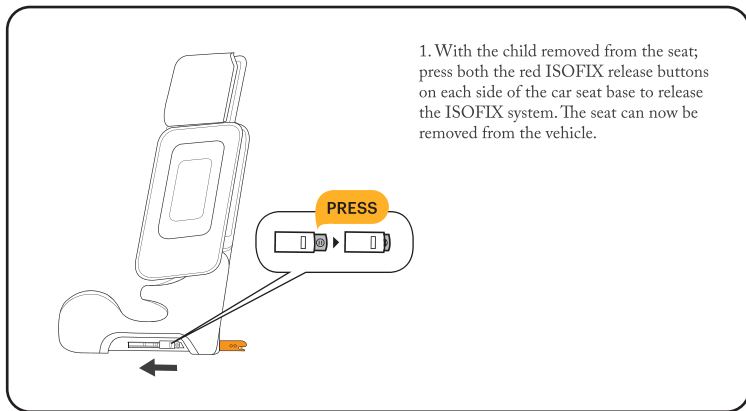


5. Press the button on the top tether mechanism (A) and pull out enough of the top tether for the hook (B) to reach the vehicle's tethering point.

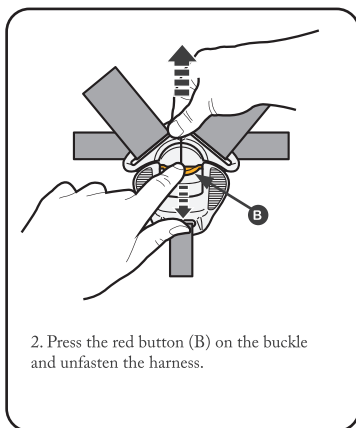
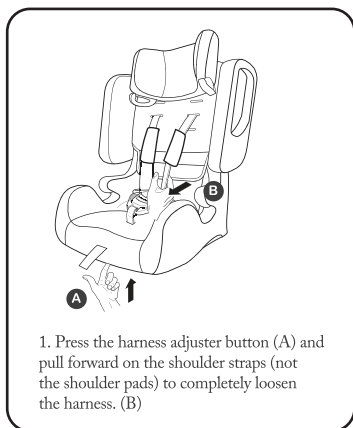


6. Connect the hook on the top tether to the vehicle's tethering point (C). Pull the free end of the tether strap (D) tight ensuring that the indicator (E) on the tethering mechanism turns "green" showing the strap is tight enough. If the indicator remains red, check the strap isn't trapped by anything and try again.

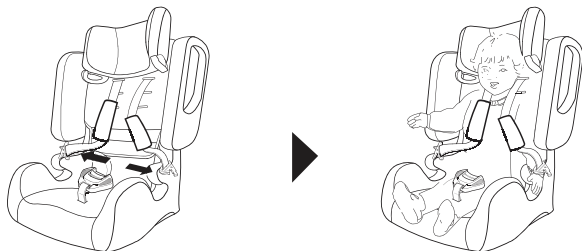
Removing the ISOFIX fitted car seat



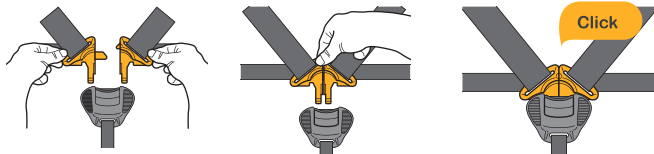
Placing your child in the seat - group 1 [9-18kg]



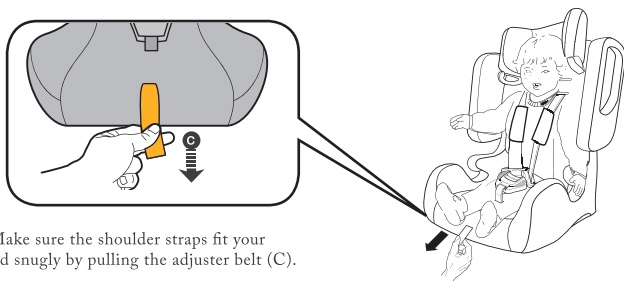
Placing your child in the seat - group 1 [9-18kg] (continued)



3. With the harness straps over the sides of the child car seat place your child in the seat.

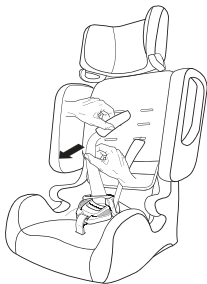
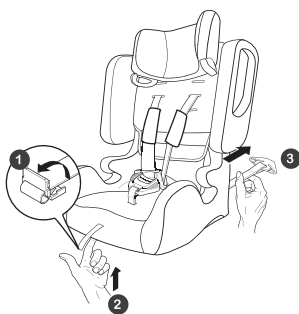


4. With your child in the seat, match the two halves of the harness buckles together and insert them into the crotch buckle until you hear a click.



4. Make sure the shoulder straps fit your child snugly by pulling the adjuster belt (C).

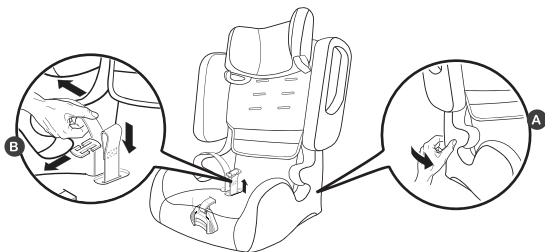
Placing your child in the seat - group 2 & 3 [15-36kg]



1. Remove the integrated belt system. Take off the end piece (1). Press the central adjuster (2) downwards, hold it down and pull out the belt (3) rearwards.

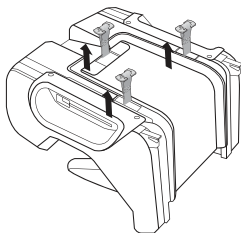
2. Pull the shoulder straps out through the front.

WARNING: Please store the removed parts carefully in a safe place for subsequent use!

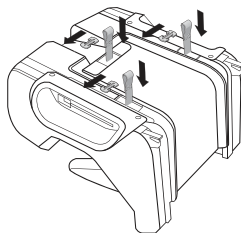


1. Partly remove the seat cover (A) and unloop the lap belt from the seat body. (B)

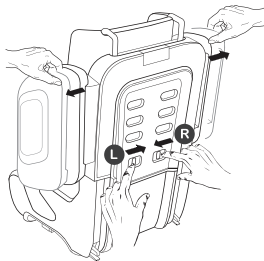
Placing your child in the seat - group 2 & 3 [15-36kg] (continued)



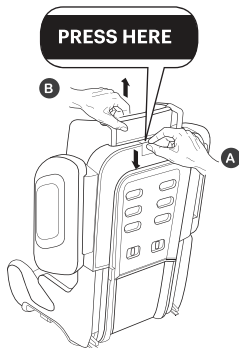
1. Unclip the base plate and turn it out sideways.



2. Guide the metal plate out of the crotch belt and pull the belt by the lock out of the seat area.

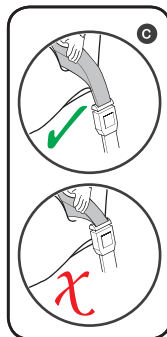
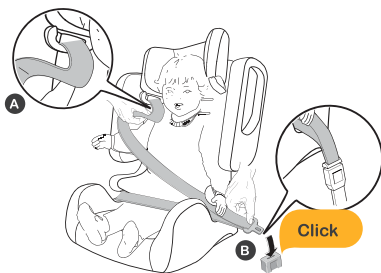


1. Press R to adjust right panel or L to adjust the left panel and pull the side protection of the child restraint system to increase its width. In reverse, the width can be reduced.

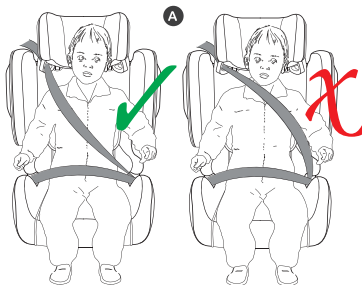


1. Press down the adjustment button of the head rest (A), pull up the head rest to a proper position at the same time (B), and then loosen the adjustment button.

Placing your child in the seat - group 2 & 3 [15-36kg] (continued)

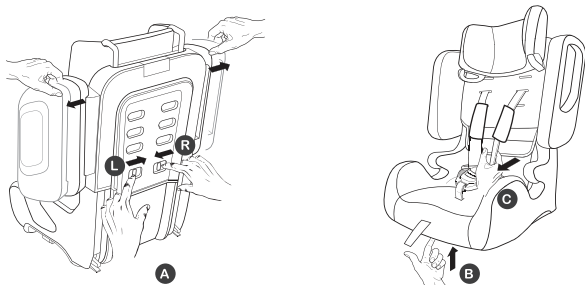


1. Place your child in the seat, insert the lap belt of the 3-point harness into the front belt guides. Close the belt lock with an audible click. (B)
2. Place the diagonal belt in the guide hook on the headrest. (A)
3. Irrespective of whether the seat is being used for Group 1 or 2+3, ensure correct belt routing at the load-bearing points. The belt lock must always be located underneath the belt guide. (C)

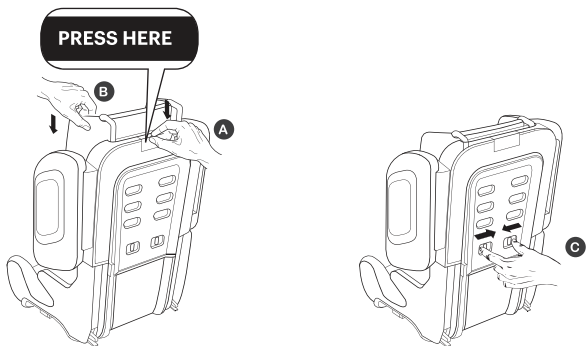


3. Adjust the head support to the height of your child- Proceed as described for Fig. (A) The optimal belt route is over the middle of the collarbone and not too near to the child's neck!

Folding the car seat



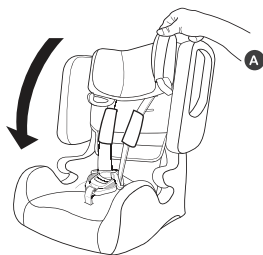
Press R to adjust right panel or L to adjust the left panel and pull the side protection of the child restraint system to increase its width (A). Press the harness adjuster button (B) and pull forward on the shoulder straps (not the shoulder pads) to completely loosen the harness. (C)



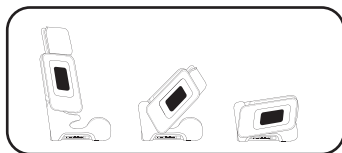
1. Pressing the "PRESS HERE" button (A) and push the head rest to the lowest level. (B)

2. Hold the folding switch (C) on the back of the seat and press it forward and down.

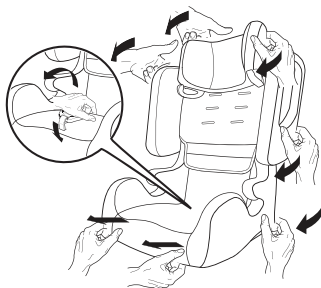
Folding the car seat (continued)



3. Fold the car seat forward (A)



Removing the cover



1. First release the cover from of head rest, backrest and parts of body sections. The cover can now be simply all removed. The cover can only be removed if the belt system has been dismantled. If need to be put on cover, proceed in the reverse order.



Information concerning disposal

The internal electronic circuitry of the belt lock should not be disposed of by way of the domestic rubbish since it consists of valuable materials that can be recycled and reused. The European Guideline 2002/96/EU (WEEE) demands that electrical and electronic device must be collected separately from the unsorted refuse so that they can be reused. To open the belt lock so that is can be removed, take the belt system out of the seat and break the belt lock at the back with a lever (e.g. board bladed screwdriver). For this purpose there is a recess in the lower end at the back into which the lever can be inserted.

Cleaning

Seat belt can be washed with soap in lukewarm water under 30 °C. The belt lock must never be washed with liquids on account of its internal electronic circuitry. The removed cover can be washed according to the instructions on the care label. The child restraint system may be cleaned with lukewarm water and soap.

General information

The instructions are located in a pocket underneath the upholstery on the back. They should always be returned after reading.
Weight class 1, 2 +3 (9 – 36 kg). Fit facing forwards only.

Warranty

Warranty valid for two year after date of purchase for production or material defects. Claims can only be made with proof of purchase. The warranty is restricted to child seats which have been treated properly and which are returned in a clean and correct condition.

The warranty does not cover natural wear and damage due to excess strain or damage due to unsuitable or improper use.

Textiles: all our fabrics fulfill high requirements in terms of color fastness. However, fabrics may become bleached by UV radiation. This is not a material defect, but simply a normal sign of wear for which no warranty can be given.

Lock: Functional faults of the lock are usually attributable to dirt for which no guarantee is extended.



Protection your vehicle seat

We would like to point out that the use of child restraint systems may cause damage to the vehicle seats. Please according to ECE R44 and GB14166 requires secure installation of the child restraint system.

Please take appropriate measures to protect your vehicle seats (such as car seat protector). Manufacturer and it's dealers are not liable for possible damage to the vehicle seats.

If you have any questions, please email us at: service@jne.com.sg

hamilton.

by YOOP™

CABRIO

FOLDABLE CHILD SAFETY SEAT

ECE-GROUP I - III , 9 - 36kg

approx. 9 months to 12 years



ISOFIX



TOP TETHER

DUTCH
Design

IMPACT
PROTECTION

Distributed by: Yoop B.V. Herengracht 545, 1017 BW Amsterdam, The Netherlands.

Due to the variations in style and design of our products, the illustrations used in this instruction booklet are generic.

We reserve the right to alter these products without notice.
Fabric and colour may vary from images shown.