

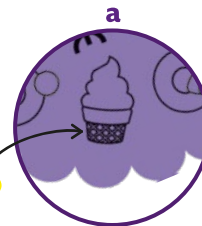
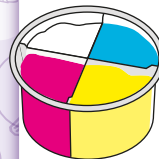


(NL) Waarschuwing! Bevat functionele scherpe punten. Letselgevaar. Bewaar de verpakking i.v.m. de informatie. **(GB) Warning!** Contains functional sharp points. Risk of injury. Please retain packaging for future reference. **(D) Achtung!** Enthält funktionelle scharfe Stellen. Verletzungsgefahr. Bewahren Sie die Verpackung für künftige Informationen auf. **(F) Attention !** Présence de pointes acérées fonctionnelles. Risque de blessure. Conservez l'emballage pour information. **(E) Advertencia!** Contiene puntas afiladas. Riesgo de lesiones. Conserve el embalaje, pues tiene información importante. **(RU) Предупреждение!** Присутствуют острые края. Риск травмирования. Пожалуйста, сохраните упаковку для дальнейшего использования. **(S) Varning!** Innehåller funktionella vassa spetsar. Spara förpackningen för framtida referens.

Totum

Happy Bracelets

1



(NL) Let op! Tussen iedere stap het potje sluiten.

(GB) Attention! Close lid of cup between every step.

(D) Achtung! Behälter nach jedem Schritt wieder verschließen.

(F) Attention ! Veuillez à refermer le pot entre chaque étape.

CLAY DRY? TIP!



c



d



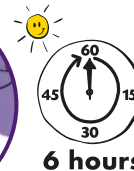
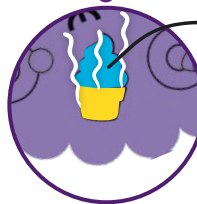
e



f



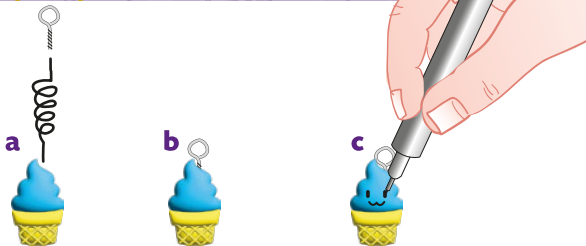
g



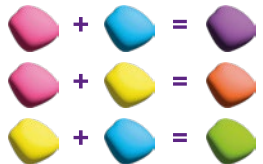
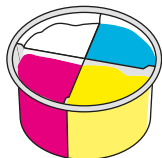
6 hours



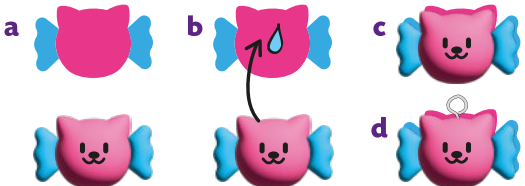
2



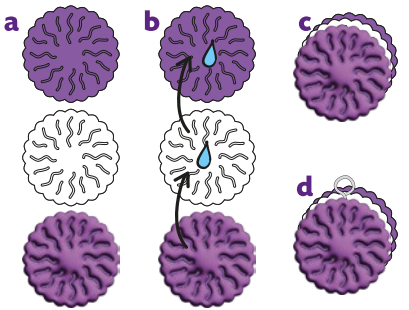
3



4



5



6



7

