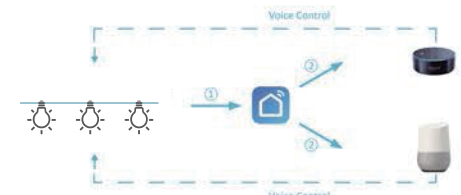


Smart LED String Lights User Manual

Smart LED Light User Guide

Thank you for purchasing our products. Read the instruction carefully before using.

It contains important information and instructions which should be followed to ensure user safety and prevent damage to people and property. When you have finished reading it, we suggest you keep the manual for future reference.



Therefore, this user guide consists of three parts. Part one is fundamental set-up, while part two and three are alternatives. If you use Amazon Alexa for voice control, please follow instructions on part one and two. If you use Google Assistant for voice control, please skip part two, follow the instructions on part one and three.

- Part One**
How to pair the light to Smart Life App? 3 - 6
- Part Two**
How to control the light with Amazon Alexa? 7 - 9
- Part Three**
How to control the light with Google Assistant? 10 - 11

Specification

Curtain String lights,String lights

Product Name	Curtain String lights, String lights
Quantity	1-Pack
Wattage	8.4W
Input	120V~60Hz,0.22A
Output	6V,1400mA
Color	RGB
Dimmable	Yes
Protectuon Rating	IP65(Bulb light)
Beam Angle	270Degree
Controlled By	Wi-Fi

Rope lights,Outdoor string lights

Product Name	Rope lights, Outdoor String lights
Quantity	1-Pack
Wattage	10W
Input	120V~60Hz,0.3A
Output	5V,2000mA
Color	RGB
Dimmable	Yes
Protectuon Rating	IP65(Bulb light)
Beam Angle	270Degree
Controlled By	Wi-Fi

Part One – How to pair the light to Smart Life App?

Step A: Smart Life app installation
Please choose either way below to download and install the app.

- As per your phone system, choose the QR code to scan.

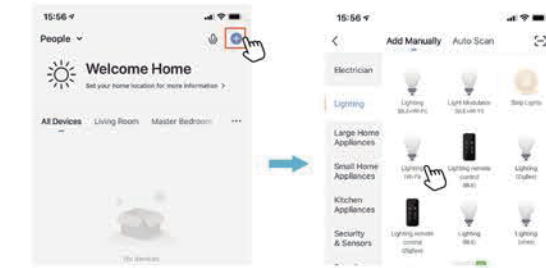


- Search keyword 'Smart Life' in Apple Store or Google Play.

Step B: Create an account on Smart Life and login.
Note: Please keep your account and password in mind for Alexa or Google Assistant App pairing later.

Step C : Add the light to Smart Life App

- Tap '+' button on top right corner to add device, then tap 'lighting devices' to enter next page.



- WiFi Connection
This smart light only supports 2.4GHz WiFi network, not 5.0GHz. Please make sure your working network is 2.4GHz, and your phone is connected to the required WiFi network.

- Power on the bulb with your own switch.



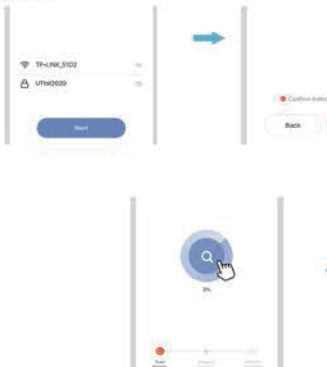
- When in EZ Mode, the light blinks rapidly (about 0.5s per blink)
-EZ Mode is the way for a Wi-Fi connection.

When the light is in AP Mode, you can change it to EZ Mode by press the button for 5 - 8 seconds to activate the light into rapid blinking status (about 0.5s per blink).



- Confirm the Light is in EZ Mode, then tap the 'Confirm' button to proceed. If you need help, tap 'view help' for more details.

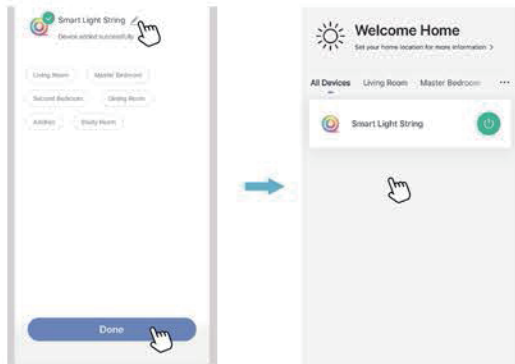
- Enter your WiFi password, tap 'ok' button and wait till it is successfully connected.



Step D : Give a name to the light.

- A simple name is recommended for easier voice recognition with Alexa or Google Assistant.
- The name given to the light will be the same for voice control on Alexa or Google Assistant. For example, the light is named 'smart light' on this user guide.

Step E : The named light will be shown on the app homepage. Now you can control the light (turn on/off, change colors, adjust brightness ect) with Smart Life on the setting page. Turn on or off the light by tapping the light icon.

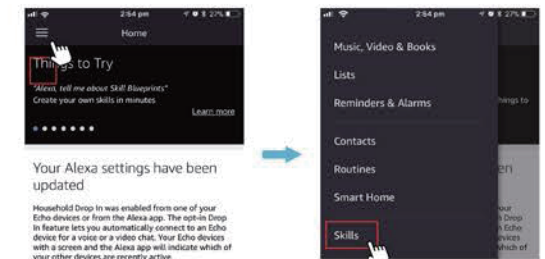


Note: To control the light with Amazon Alexa, please read Part Two. To control the bulb with Google Assistant, please read Part Three directly.

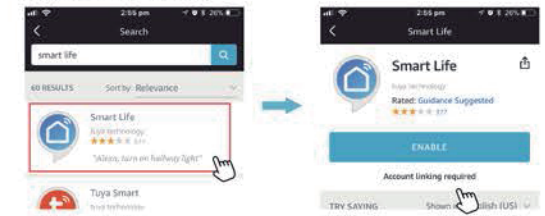
Part Two – How to control the light with Amazon Alexa?

Please make sure that your Alexa app is connected to Echo, and both work well under your WiFi network.

- Step A :** Log in your Alexa App, tap top left corner, and tap 'Skills'.

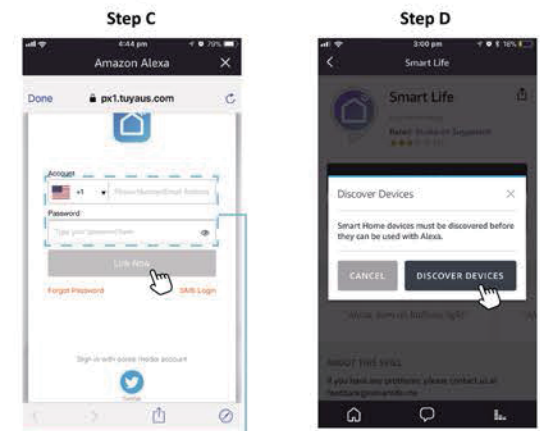


- Step B :** Type 'Smart Life', find 'Smart Life' from the search result and tap it to enable the skill.



- Step C :** Enter your Smart Life App account and password. Tap 'Link Now', then tap 'Authorize' on the next page to bind Smart Life account to Alexa.

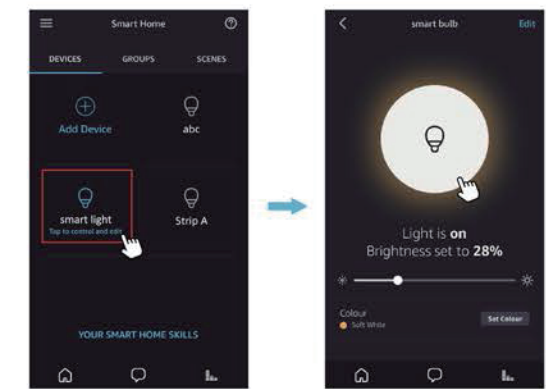
- Step D :** When your Smart Life account is bound to Alexa, tap 'DISCOVER' to detect the light.



- Step E :** When the named light is paired to Alexa from Smart Life, it will show on the device page (see the 'smart light' example).

- Step F :** Now you can control the bulb with Alexa App on the setting page. To turn on or off the light, simply tap the light icon.

Step G : You can also voice control the light with Alexa by giving these commands: "Alexa, turn on 'device name' ", "Alexa, set 'device name' to 'color' ", "Alexa, set 'device name' to 'number' ". Device name is the one you give to the light. The light is named 'smart light' in this user guide. For example, "Alexa, turn on 'smart light' ", "Alexa, set 'smart light' to 'blue' " etc.



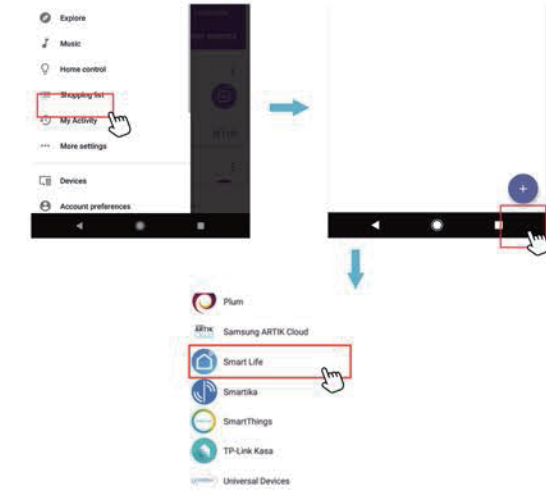
Note: To control the light with Google Assistant, please continue to read Part Three.

Part Three – How to control the light with Google Assistant?

- Step A :** Login Google Assistant App, tap 'Home Control' on the left side bar page.

- Step B :** Tap '+' button on the bottom right to enter next page.

- Step C :** Find 'Smart Life' from side bar list.



- Step D :** Enter your Smart Life App account and password to bind Smart Life account to Google Assistant.

Step E : You will find the named light shows on the Home Control page. Now you can control the light on Google Assistant App, or voice control it by giving these commands: "ok Google, turn on 'device name' ", "ok Google, set 'device name' to 'color' ", "ok Google, set 'device name' to 'number' ".
Device name is the one you give to the light. The light is named 'smart light' in this user guide. For example, "ok Google, turn on 'smart light' ", "ok Google, set 'smart light' to 'blue' " etc.

