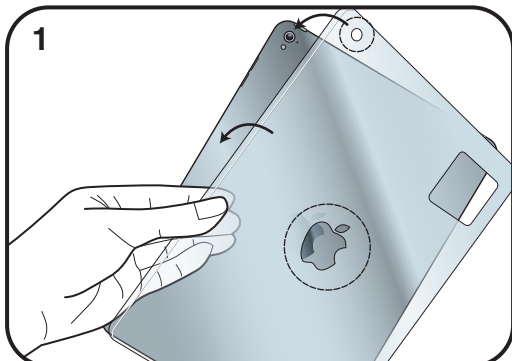
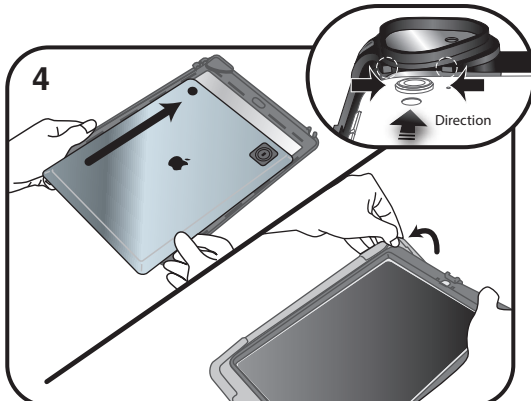


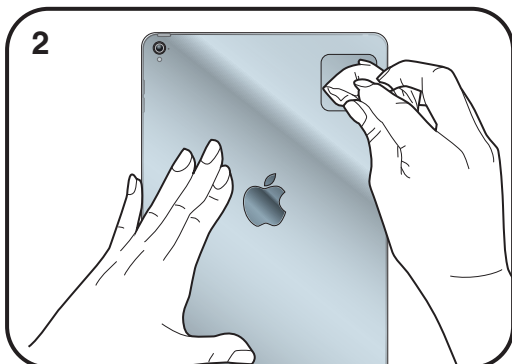
## Installation Guide



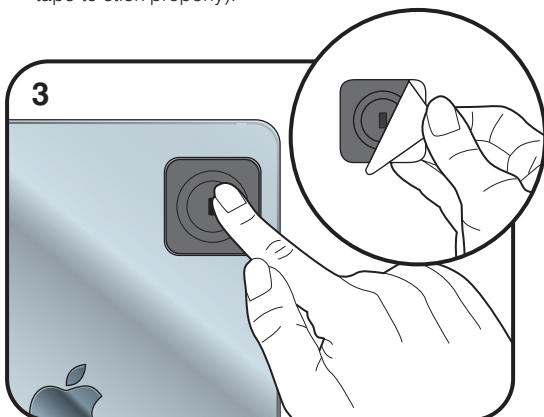
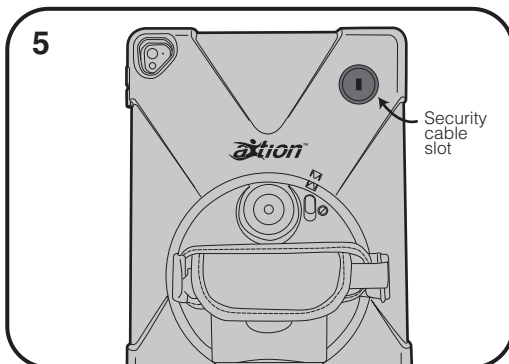
1 Put the PET tray onto the back of your iPad. Make sure the hole of the back camera and Apple logo of the PET tray are align with the back camera and Apple logo of the iPad.



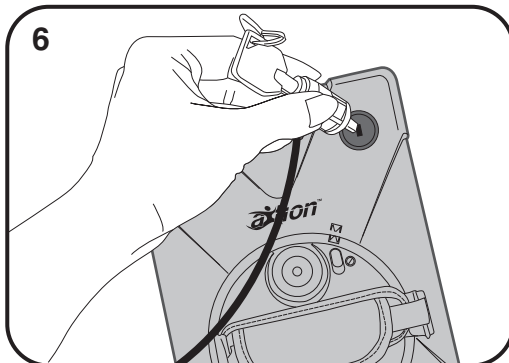
4 Install the hard plastic frame and then the silicon case onto your iPad. (Refer the other installation guide)



2 Clean the iPad (square-shaped hole) with alcohol (a clean and dry surface is required for the VHB tape to stick properly).



3 Remove the back of the VHB tape off the security plate. Apply the security plate directly onto the square-shaped hole & press it with something heavy for 48 hours. Remove the PET tray.



6 Plug the security cable into the slot of the security plate.