



# SKILLER PRO

## Manual





## Table of Contents

<b>1. Features (Keyboard)</b>	<b>3</b>
<b>2. Features (Software)</b>	<b>3</b>
<b>3. Specifications (Keyboard)</b>	<b>3</b>
<b>4. Packaging Contents</b>	<b>3</b>
<b>5. Keyboard Overview</b>	<b>4</b>
<b>5.1 Multimedia Keys</b>	<b>4</b>
<b>6. Connecting to Computer</b>	<b>5</b>
<b>7. Installing the Software</b>	<b>5</b>
<b>8. The Configurator</b>	<b>7</b>
<b>8.1 Starting the Configurator</b>	<b>7</b>
<b>8.2 Main Menu</b>	<b>8</b>
<b>8.3 Profiles</b>	<b>9</b>
<b>8.4 Key Programming</b>	<b>9</b>
<b>8.4.1 Keyboard in the basic function</b>	<b>9</b>
<b>8.5 Macro Settings</b>	<b>10</b>
<b>8.5.1 Macro Assignments</b>	<b>11</b>
<b>8.5.2 Multimedia</b>	<b>12</b>
<b>8.5.3 Windows Keys</b>	<b>13</b>
<b>8.5.4 Standard</b>	<b>13</b>
<b>8.5.5 Assign Shortcuts</b>	<b>14</b>
<b>8.5.6 Key Off</b>	<b>14</b>
<b>8.6 Advanced Settings</b>	<b>15</b>
<b>9. Functions without the Software</b>	<b>16</b>
<b>9.1 Illuminate</b>	<b>16</b>
<b>9.2 Standard Mode</b>	<b>16</b>
<b>9.3 WASD &amp; Arrow keys</b>	<b>16</b>

Dear Customer,

Congratulations and thank you for your purchase of this high-quality Sharkoon product. To ensure a long service life, and full functionality of the product, we recommend that you read this manual thoroughly. We hope you enjoy our product!

**SHARKOON Technologies**



## 1. Features (Keyboard)

- Illuminating gaming keyboard
- 3-block standard layout
- 9 multimedia, 6 macro and 3 profile keys
- Software for individual programming of keys
- Multi-key rollover support
- On-board memory
- Supported operating systems: Windows XP/Vista/7/8 (32 and 64 bit)
- Operating life cycles of keys: > 10 million keystrokes

Connection	USB
Cable length	150 cm
Number of keys	104 + 9 multimedia, 6 macro and 3 profile keys
Dimensions (L x W x H)	480 x 190 x 32 mm
Weight	888 g (including cable)

## 2. Features (Software)

- Special software for the individual programming of key functions in games and other applications (e.g., Photoshop, Windows, browser, etc.)
- Supports three different profiles, indicated by the active LEDs for M1 and M2. The M3 profile is active when both lights are simultaneously illuminated.
- Fully programmable keys (excluding multimedia keys)
- Programmable keys can record macros, macro loops, media functions, internet functions, keystrokes, mouse functions, etc.
- Backlight: The brightness can be adjusted in 10% iterations or continuously run at 100%. It is also possible to change the lighting mode to "Pulsate" or turn them off completely.

## 3. Specifications (Keyboard)

Input voltage	5 V
Operating life of the keys	10 million keystrokes
Operating temperature	0°C ~ +40°C
Storage temperature	-15°C ~ +60°C

## 4. Packaging Contents

- SKILLER PRO
- CD with software and PDF manual
- 1 anti-slip pad

Note:

Should any of the above items be missing, please contact us immediately by E-mail or our customer service:

support@sharkoon.com (Germany and Europe)

support@sharkoon.com.tw (international)





## 5. Keyboard Overview



- A - Multimedia keys
- B - US, UK, ES, CN or German layout
- C - Macro keys
- D - Palm rest
- E - Profile keys

### 5.1 Multimedia Keys

Function key combinations	Secondary Features
FN+F1	Rewind
FN+F2	Fast Forward
FN+F3	Decrease report rate
FN+F4	Increase report rate
FN+F5	Play
FN+F6	Stop
FN+F7	Previous
FN+F8	Next
FN+F9	Start media player
FN+F10	Mute
FN+F11	Volume -
FN+F12	Volume +

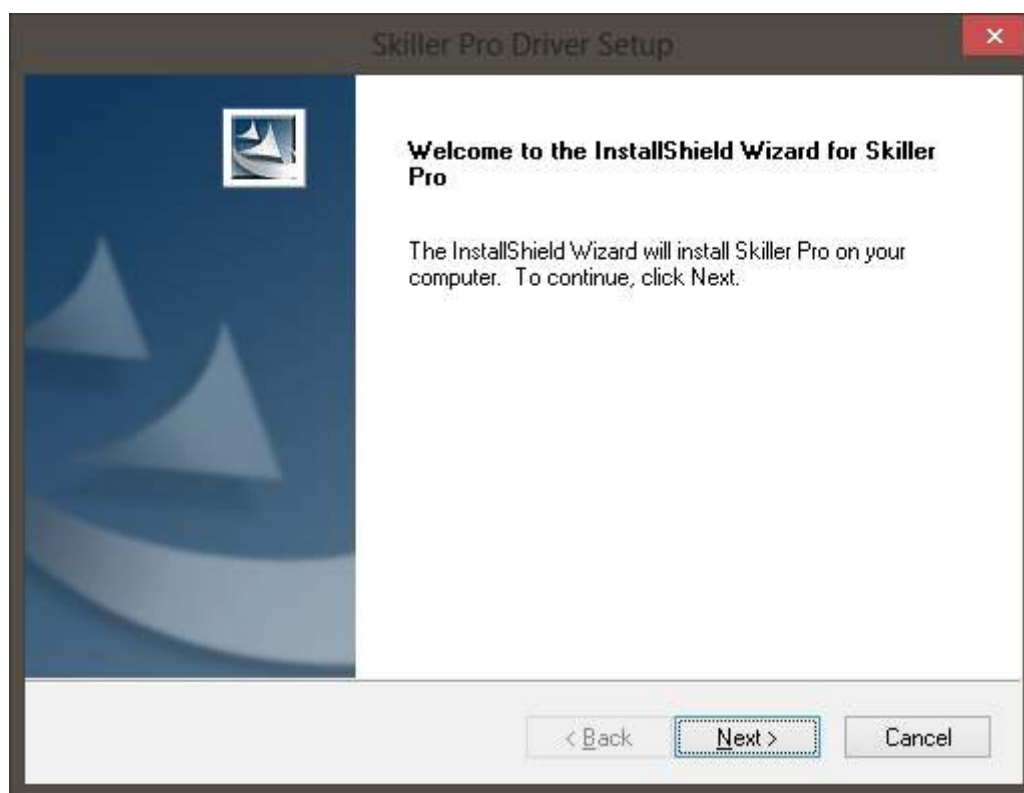


## 6. Connecting to Computer

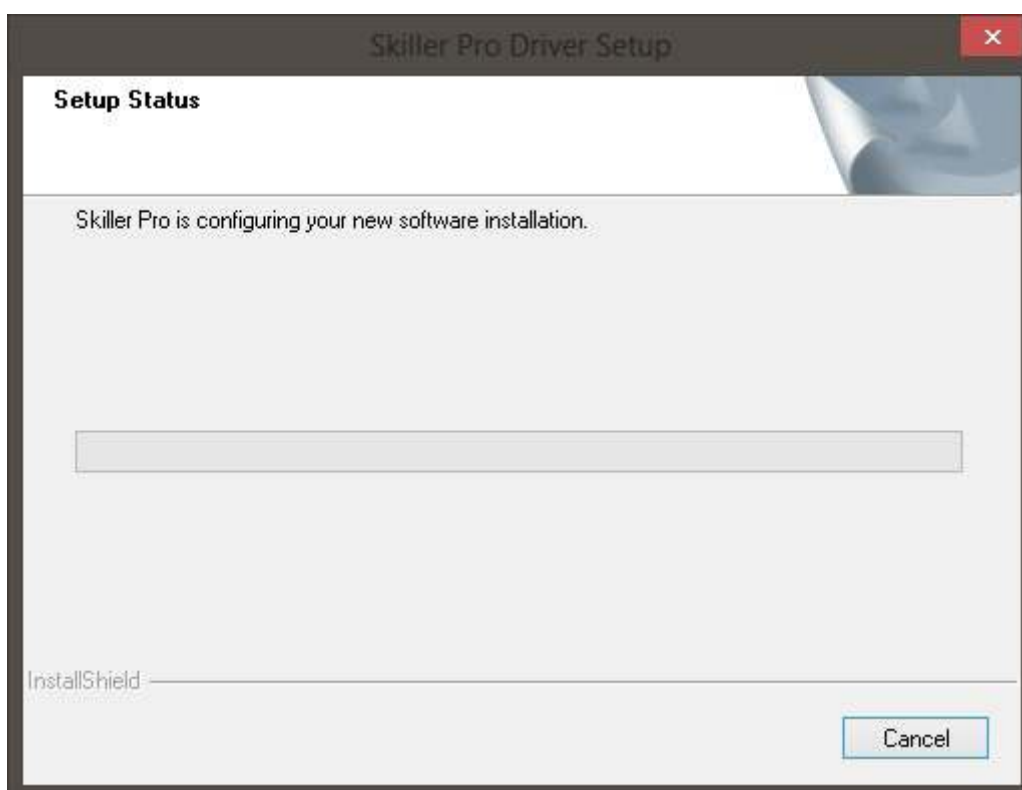
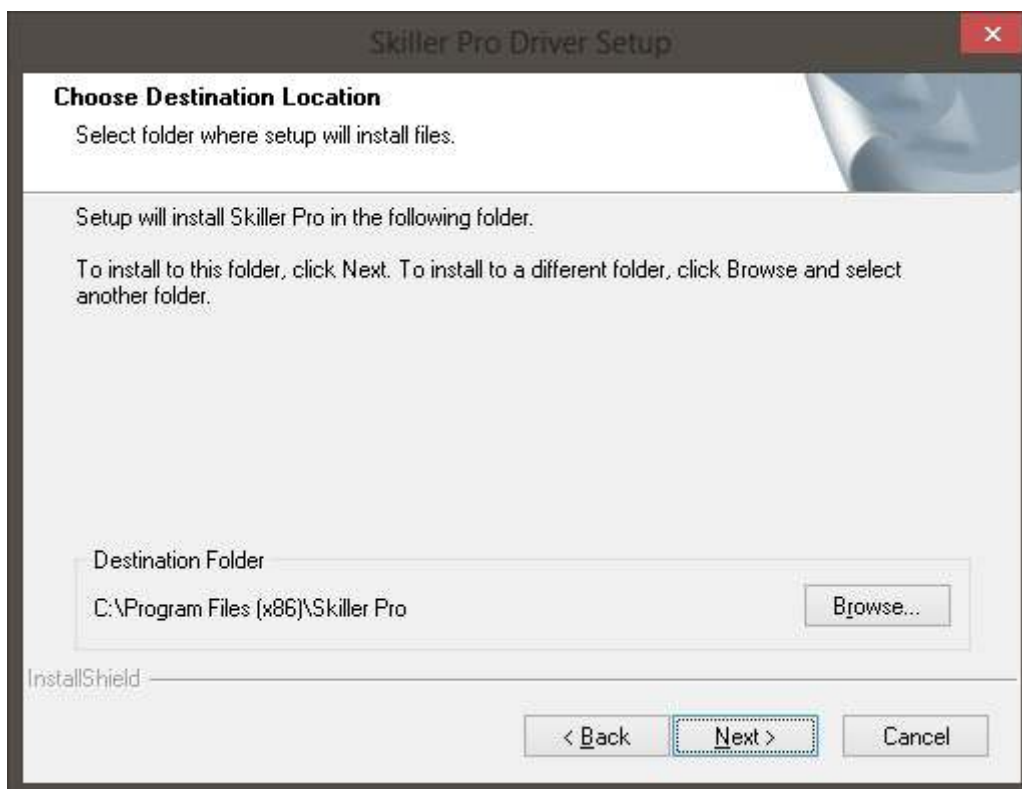
1. Insert the keyboard's USB plug into an available USB port on your computer.
2. The operating system will automatically detect the keyboard and all required drivers will be installed.
3. If the keyboard is not recognized, disconnect and try another USB port on your computer.

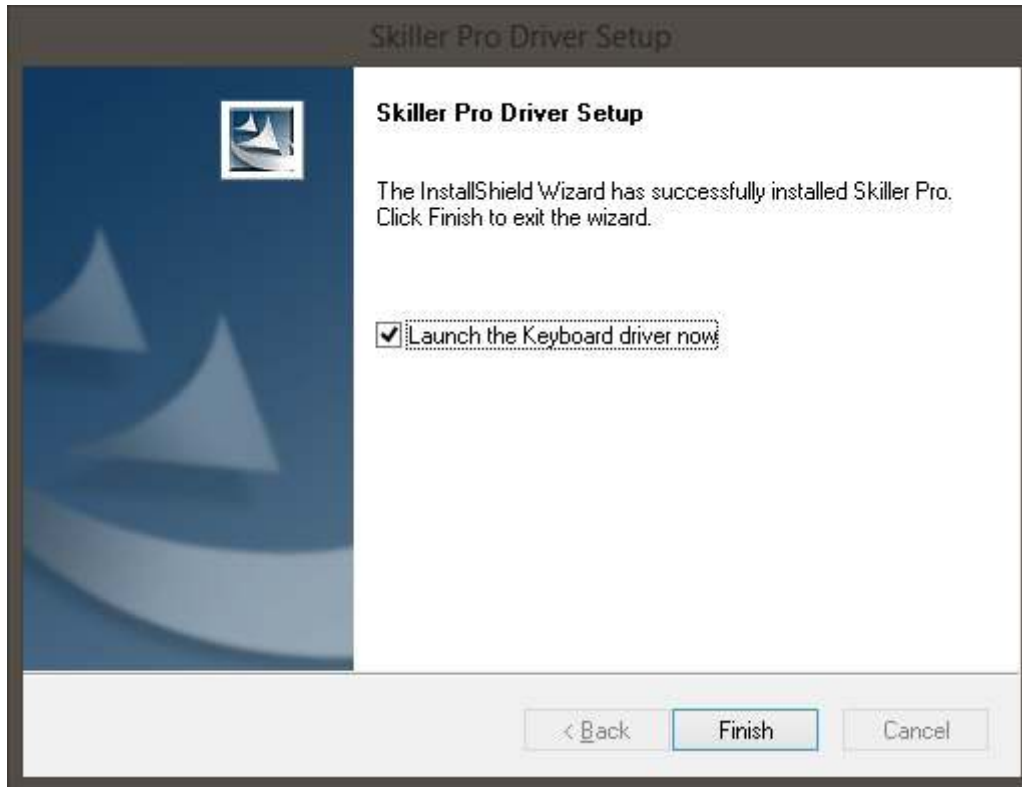
## 7. Software Installation

1. All existing keyboard software should be uninstalled before installing the included software.
2. Insert the provided Tools CD into your CD/DVD drive.
3. Open the CD/DVD drive (e.g. D:\) directory.
4. Open the folder "SHARKOON Skiller Pro".
5. Start the "setup.exe" and follow the instructions on the installation agent until complete.









6. Once the installation is complete, the SKILLER PRO icon will appear on your Windows taskbar.
7. Congratulations, the software is successfully installed.

## 8. The Configurator

### 8.1 Starting the Configurator

Start the application by double-clicking the SKILLER PRO icon in the icon taskbar.



## 8.2 Main Menu



A -The SKILLER PRO offers three different profiles with the selection of tabs M1, M2, M3 ( see 8.3 ).

B - Each key on the keyboard can be individually programmed (excluding multimedia keys) ( see 8.4 ).

C - All profile settings reset the to default settings.

D - Through these tabs profiles can be created, loaded, saved or edited.

E - Through Macro Setting, desired functions of the keys L1 to L6 are assigned ( see 8.5 ).

F - Fine tuning (Polling Rate, Key Response time, Window Key Setting and Light Intensity) options are made in the Advanced Setting tab ( see 8.6 ).

G -Through Macro Manager, individually stored macros can be called directly.





## 8.3 Profiles

The M1, M2 and M3 keys can be assigned different profiles. The profiles are independent from each other, therefore, each profile can be assigned different profiles.

**(If a profile is active, the Windows key is automatically disabled)**

## 8.4 Key Programming

Each key can be individually programmed, for this, proceed as follows:

Choose the key you wish to program by selecting it in the configuration using the left-click on the mouse. The configurator will appear:



You can now customize the keys to your wishes and save the changes.

### 8.4.1 Keyboard in the basic function

Use key combination FN + Print Screen key to disable gaming mode and the return the keyboard to its basic functions.





## 8.5 Macro Settings



E - Through the Macro Setting, various macros can be created in the Macro Manager. To edit, select one of the fields from L1 to L6 by using the left mouse button. The selection menu window opens.



Here you have possibility through the various options to assign your personal preferences.

## 8.5.1 Macro Assignments

When selecting Macro Manager, the Record Options field will appear.



Here you can summarize key tasks.





## 8.5.2 Multimedia

Each key can be assigned a media function within the configurator:  
Select a "media hotkey" via multimedia



The choices (mute switch, volume loud/quiet) will be stored on the selected L-key after being saved.



## 8.5.3 Windows functions



Each L-key can be assigned a Windows function in the configurator. Select from the menu the desired function (calculator, search function, email client, etc.)

## 8.5.4 Standard

Here you can reset the keys back to their original functions.





## 8.5.5 Assign Shortcut



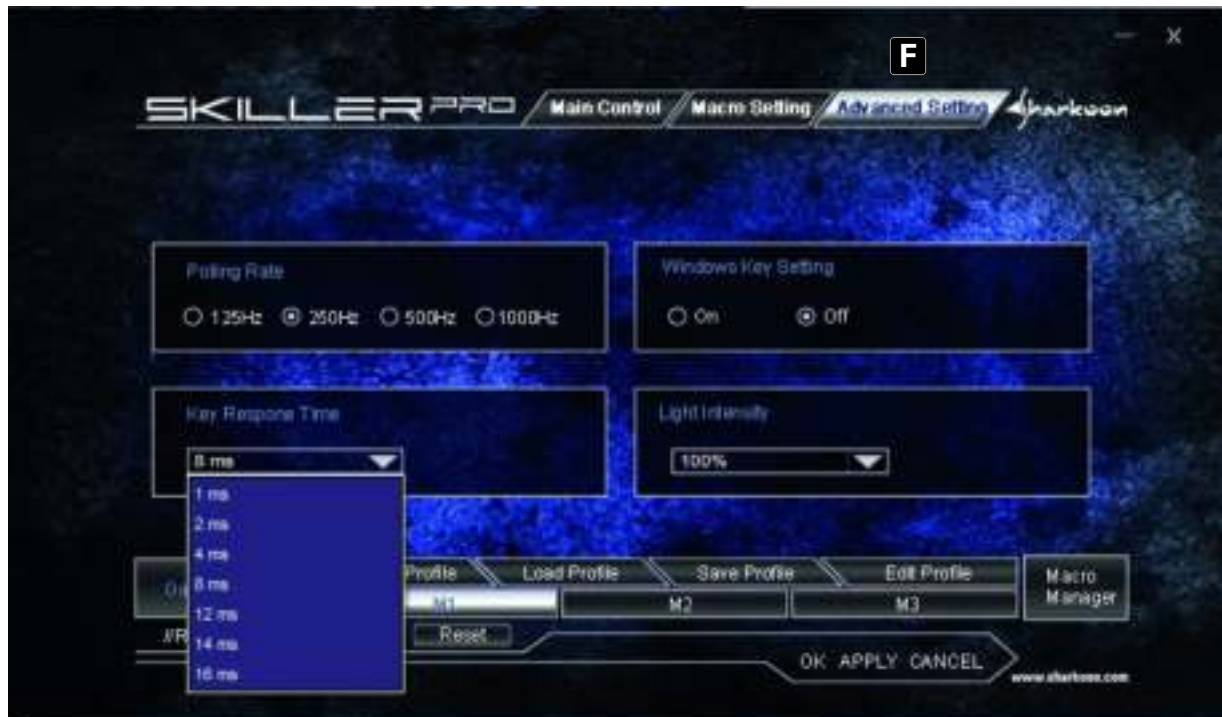
Within this option you can assign a shortcut.

## 8.5.6 Key Off

This key has no function.



## 8.6 Advanced Settings



F - Here the following adjustments can be made:

- Polling Rate settings: 125Hz, 250Hz, 500Hz or 1000Hz
- Turn Windows key on or off
- Set Key Response time (1ms – 16ms)
- Illuminating the keyboard (The Illumination can also be changed without the software by pressing the FN + Scroll keys.)



## 9. Functions without the Software

### 9.1 Illuminate

Key combination FN + Scroll will adjust the lighting. (10%-100%), Pulsate, Off



### 9.2 Standard Mode

With the key combination FN + OFF key your keyboard will operate in standard mode. In this mode the Windows key is functional. The profiles M1, M2, M3 are disabled.



### 9.3 WASD & Arrow keys

Press FN + Windows key simultaneously. Now the WASD keys function as the arrow keys and the WASD keys now function as the arrow keys.



**Legal disclaimer:**

For potential loss of data, especially due to inappropriate handling, SHARKOON assumes no liability. All named products and descriptions are trademarks and/or registered trademarks of the respective manufacturers and are accepted as protected.

As a continuing policy of product improvement at SHARKOON, the design and specifications are subject to change without prior notice. National product specifications may vary.

The legal rights of the enclosed software belong to the respective owner. Please observe the license terms of the manufacturer before using the software.

All rights reserved especially (also in extracts) for translation, reprinting, reproduction by copying or other technical means.

Infringements will lead to compensation.

All rights reserved especially in case of assignation of patent or utility patent. Means of delivery and technical modifications reserved.

**Disposal of your old product**

Your product is designed and manufactured with high quality materials and components, which can be recycled and reused.

When this crossed-out wheeled bin symbol is attached to a product, it means the product is covered by the European Directive 2002/96/EC.

Please be informed about the local separate collection system for electrical and electronic products. Please act according to your local rules and do not dispose of your old products with your normal household waste. The correct disposal of your old product will help prevent potential negative consequences to the environment and human health.

© SHARKOON Technologies 2014  
[www.sharkoon.com](http://www.sharkoon.com)