

## GPAD® MK-95

The GPAD MK95 comes with the brand new Opto Q Mechanical Switch that combines two extremely different keystrokes feeling into one single optical switch. There are linear feeling and clicky feeling. That means you can choose what keystroke feeling and feedback you want or need, depending on what purpose you use the GPAD MK95. You have full control on your keyboard even the key switch and don't need to worry about what kind of switch is the better choice.

Due to the GPAD's special optical trigger design, the GPAD MK95 offer the lower-delay and more stable signal transmits by the special optical technology. That means the signal would almost synchronize reaction when you stroke the key.

The integrated "Anti-Ghosting" function enables you to simultaneously press all modifier buttons (i.e. Shift key, Ctrl button, Alt and Windows button) as well as 6 additional shortcut buttons, without losing or confusing any information (ghost button effect).

Furthermore we have equipped the GPAD MK95 with GPAD software which enables you to fully customize the RGB lighting, Macros and more function settings. This adds style to your skill and also ensures you never lose any command even in the darkest environment.

### Technical detail

- Switchable optical switch.
- Multi keyboard control.
- Magnetic soft leather wrist rest.
- Adjustable RGB Lighting.
- The rock-solid Aircraft aluminum top case.



LJK

Support Windows 10, 8, 7

GPAD PartNo. 8J.P7R81.KDU



4 715 109 798395



CE ROHS

Clayton Electronics Czech s.r.o.

Turenia 1315/112, 667 00 Brno, Czech Republic.



9JP7R81KDU1945500027

Made in China

For more information about GPAD®  
Visit the official website: [www.gpad.com](http://www.gpad.com)

LJK

Key switch:

N-Key Rollover:

Key Stroke:

Lighting:

Lighting Features:

Connectors:

Media Keys:

Color:

Dimensions:

Weight:

1,47Kg

IT

Struttura:

Roll-over N-Key:

Pressioni dei tasti:

Illuminazione:

Connettori di I/O:

Connettori:

Testi multimediali:

Colori:

Dimensioni:

Peso:

1,47 Kg

SME

Struttura:

Manutenzione:

Numero di tasti:

Lighting:

Lighting Features:

Connettori:

Media Keys:

Colori:

Dimensioni:

Peso:

1,47 Kg

NO

Struttura:

Manutenzione:

Numero di tasti:

Lighting:

Lighting Features:

Connettori:

Media Keys:

Colori:

Dimensioni:

Peso:

1,47 Kg

DE

Struktur:

Wartung:

Anzahl der Tasten:

Beleuchtung:

Beleuchtungsfunktionen:

Anschlüsse:

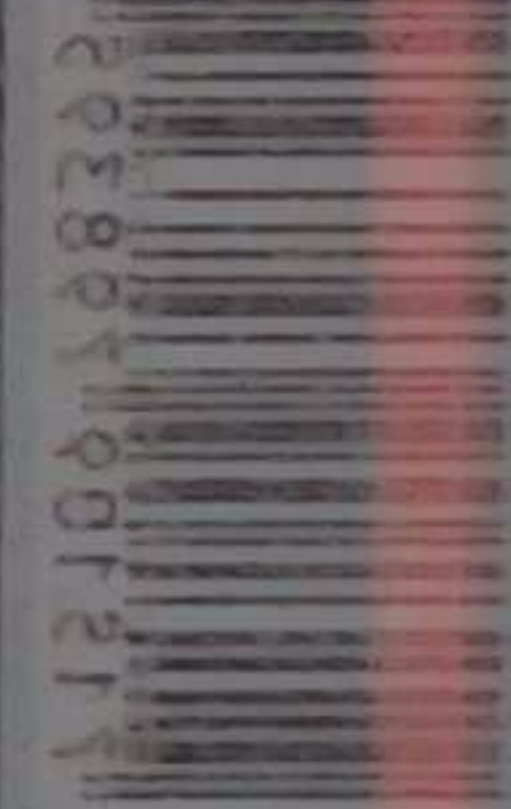
Mediatasten:

Farben:

Maße:

Gewicht:

1,47 Kg



Visit the official website: [www.gpad.com](http://www.gpad.com)