

# aiwa

JAPANESE ENGINEERING SINCE 1951

## HE-888BT

- USER MANUAL EN
- MANUAL DE USUARIO ES
- MODE D'EMPLOI FR
- BEDIENUNG-SANLEITUNG DE
- MANUALE DELL'UTENTE IT
- +14



### ULTRA SLIM - HOME CINEMA SOUND BAR

# aiwa

JAPANESE ENGINEERING SINCE 1951

Follow us! aiwaEU

www.eu-aiwa.com

AIWA CO., LTD.  
Shinagawa-Ku  
TOKYO 141-0022, JAPAN

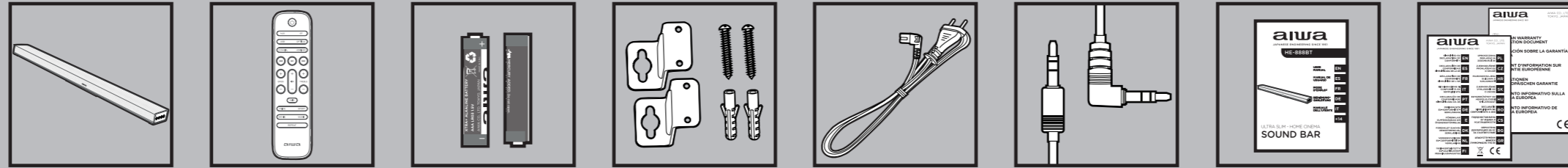
©AIWA EUROPE S.L. All rights reserved. Printed in P.R.C.



## HE-888BT

- 80W RMS POWER SOUND
- DYNAMIC BASS WOOFER
- OPTICAL & COAXIAL INPUT
- UP TO 10 METERS
- USB READER
- AUX IN
- HDMI - ARC + CEC
- DSP DIGITAL SIGNAL PROCESSOR
- COMPATIBLE

### 01. ACCESSORIES

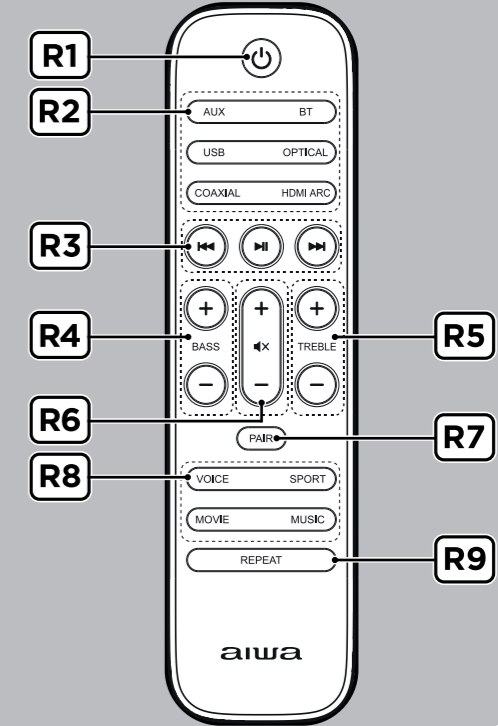
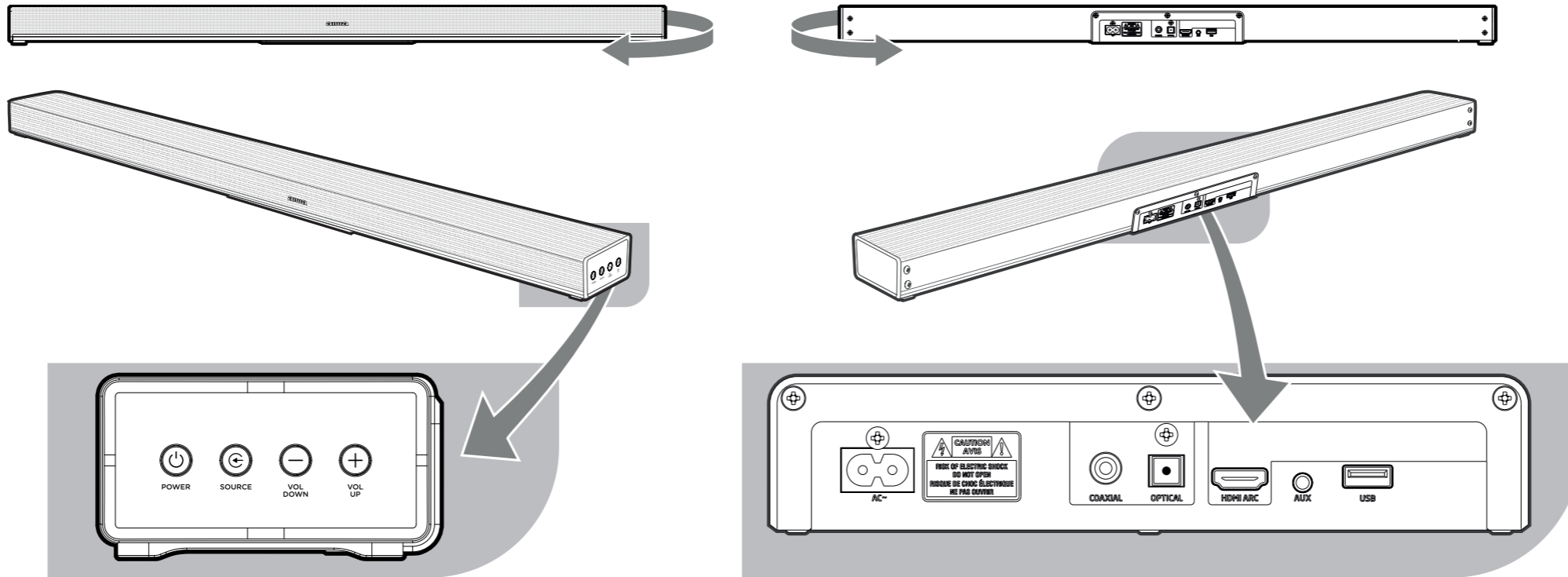


## + aiwa

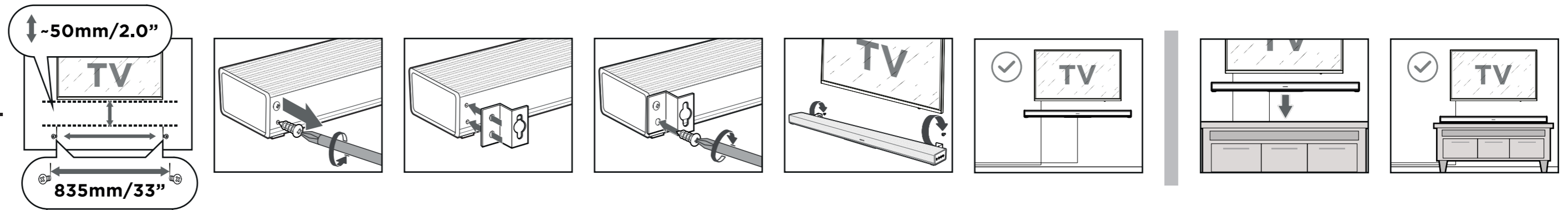


www.aiwa\_europe.com

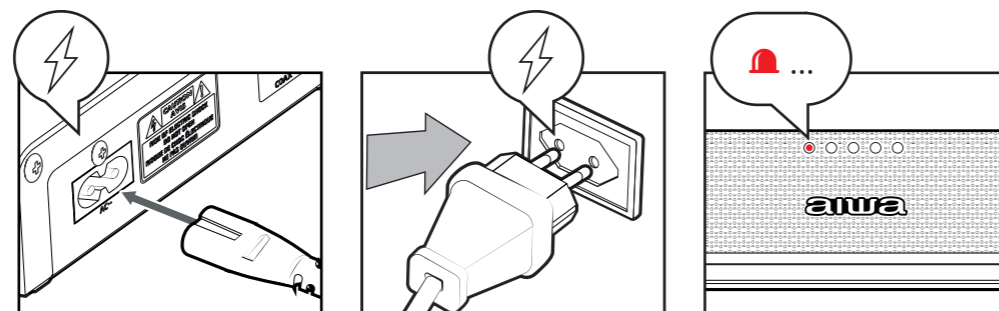
### 02. OVERALL VIEW



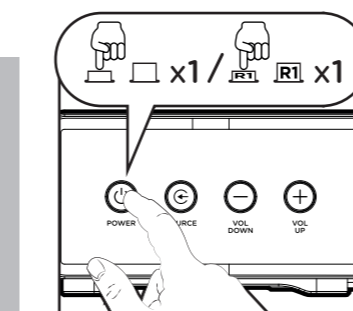
### 03. PLACEMENT AND MOUNTING



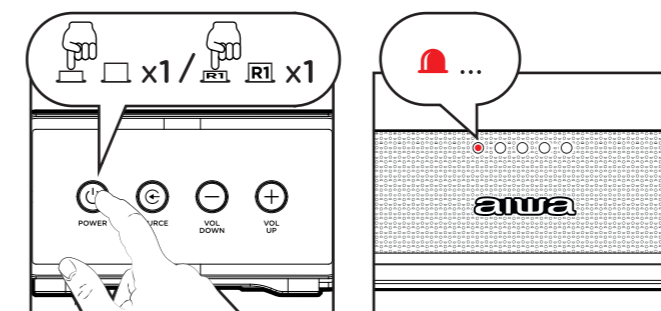
### 04. CONNECTION TO THE MAINS



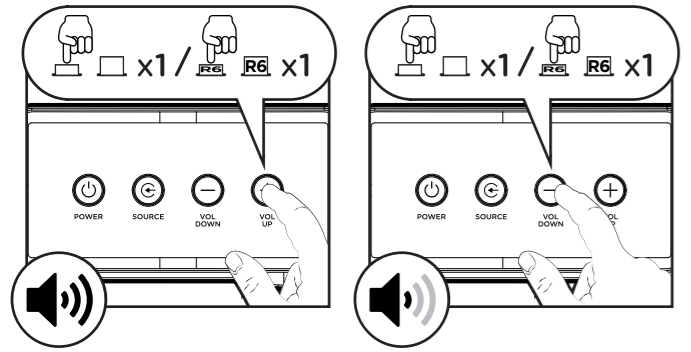
### 05. TURN ON



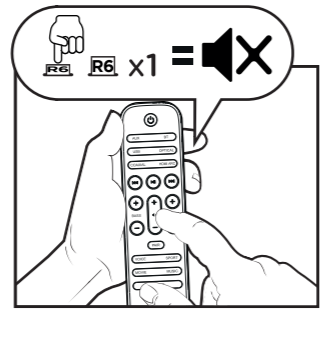
### 06. TURN OFF (STANDBY)



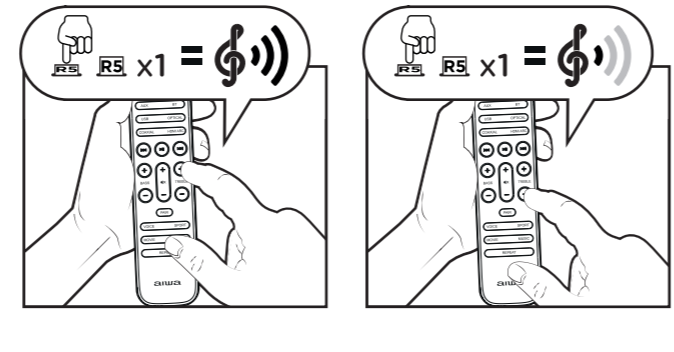
07. VOLUME ADJUSTMENT



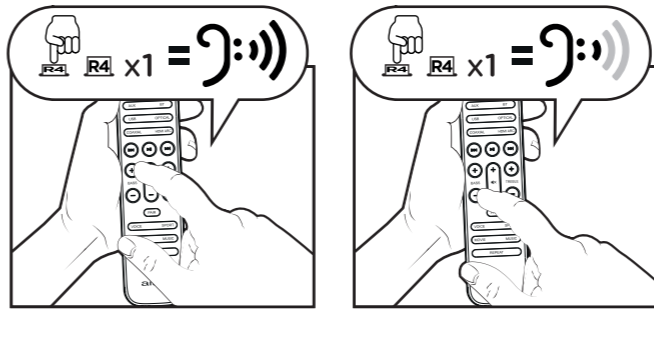
08. MUTE



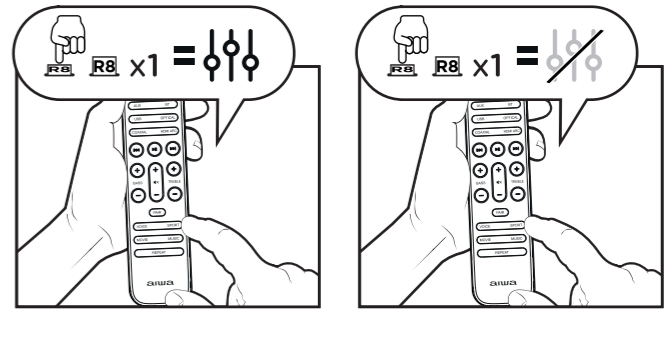
09. TREBLE ADJUSTMENT



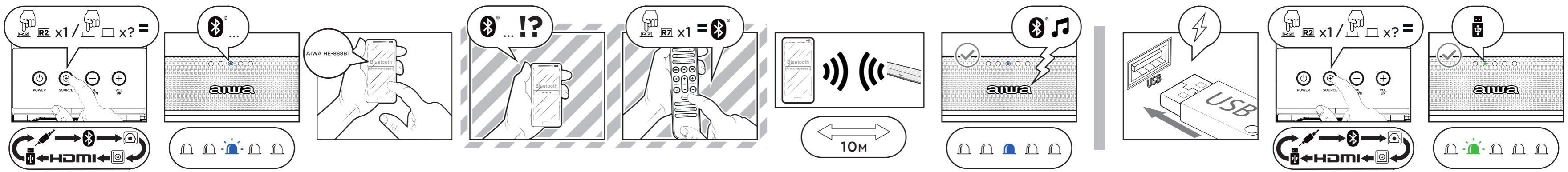
10. BASS ADJUSTMENT



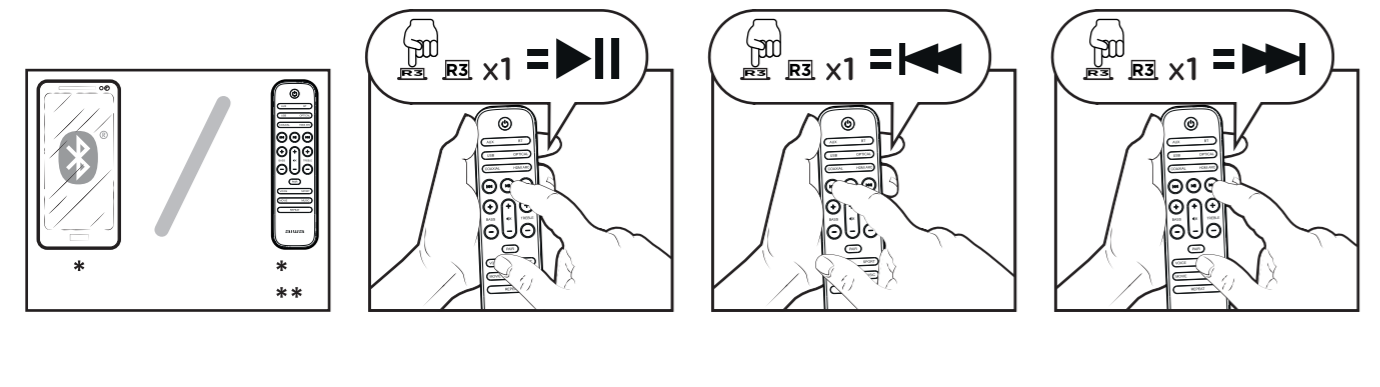
11. EQUALIZER ADJUSTMENT



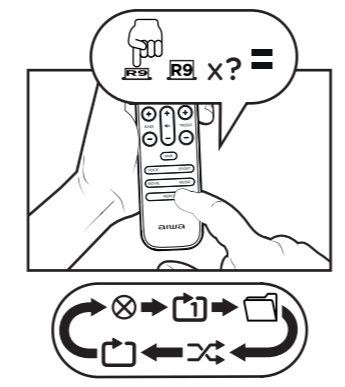
12. BLUETOOTH FUNCTION & PAIRING SOLUTION



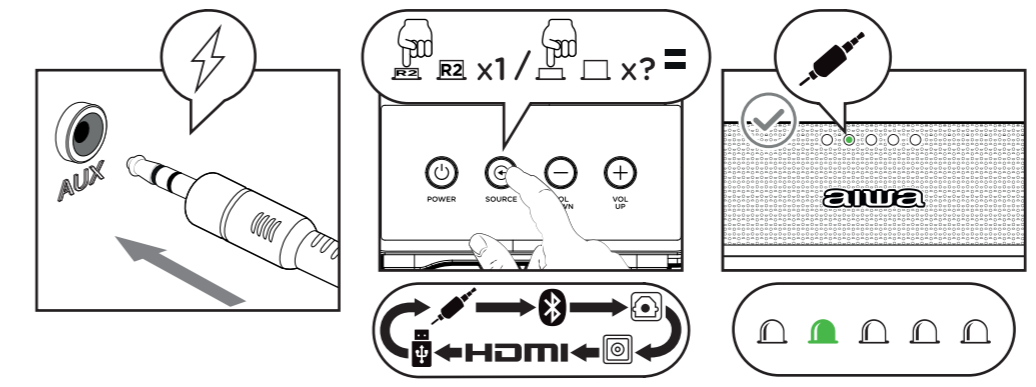
14. MUSIC PLAYBACK FOR BLUETOOTH\* AND USB\*\* MODES



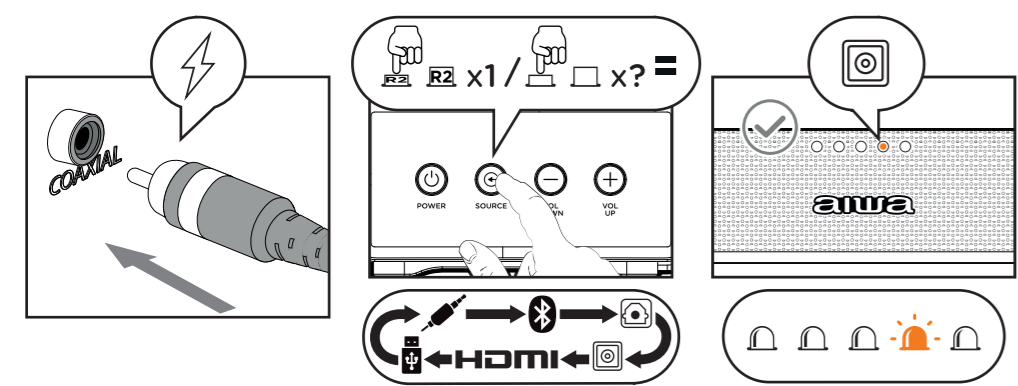
15. REPEAT



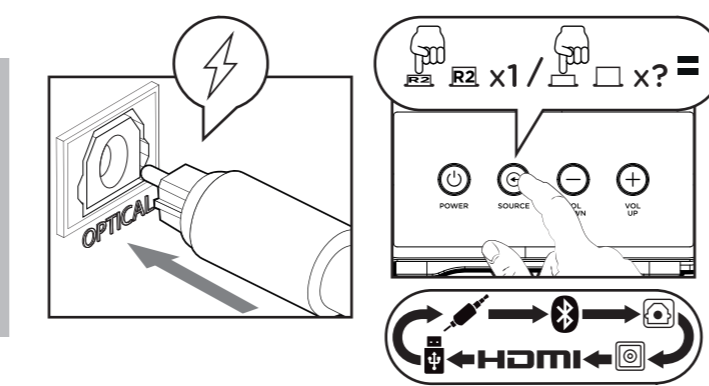
16. AUXILIARY INPUT MODE



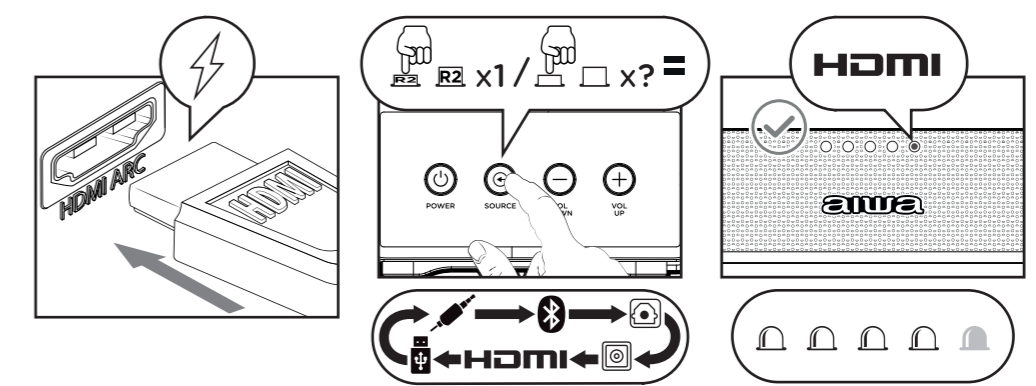
17. COAXIAL INPUT MODE



18. OPTICAL INPUT MODE



19. HDMI INPUT MODE



ES- 01. Accesorios. 02. Vista general. 03. Montaje y posición. 04. Alimentación. 05. Encender. 06. Apagar (Standby). 07. Volumen. 08. Silenciar. 09. Ajustar agudos. 10. Ajustar graves. 11. Ecualizador. 12. Conexión Bluetooth y solución. 13. Modo USB. 14. Reproducir música (BT\* y USB\*\*). 15. Modo repetición. 16. Modo toma auxiliar. 17. Modo coaxial. 18. Modo entrada óptica. 19. Modo HDMI.
FR- 01. Accessoires. 02. Vue générale. 03. Assemblée et position. 04. Alimentation électrique. 05. Allumer. 06. En attente. 07. Volume. 08. Muet. 09. Ajustement des aigus. 10. Réglage des basses. 11. Egalisateur. 12. Connexion Bluetooth et solution. 13. Mode USB. 14. Jouer de la musique (BT\* et USB\*\*). 15. Mode répétition. 16. Mode prise auxiliaire. 17. Mode coaxial. 18. Mode 'entrée optique. 19. Mode HDMI.
IT- 01. Accessori. 02. Vista generale. 03. Montaggio e posizione. 04. Alimentazione elettrica. 05. Accendere. 06. Standby. 07. Volume. 08. Muto. 09. Regolazione degli alti. 10. Regolazione dei bassi. 11. Equalizzatore. 12. Connessione Bluetooth e soluzione. 13. Modalità USB. 14. Riprodurre musica (BT\* e USB\*\*). 15. Modalità di ripetizione. 16. Modalità presa ausiliaria. 17. Modalità coassiale. 18. Modalità di ingresso ottico. 19. Modalità HDMI.
PT- 01. Acessórios. 02. Visão geral. 03. Montagem e posição. 04. Alimentação elétrica. 05. Ligar. 06. Aguardar. 07. Volume. 08. Mudo. 09. Ajustar os agudos. 10. Ajustar o baixo. 11. Equalizador. 12. Ligação e solução Bluetooth. 13. Modo USB. 14. Reproduzir música (BT\* e USB\*\*). 15. Modo de repetição. 16. Modo auxiliar. 17. Modo de entrada óptica. 19. Modo HDMI.
DE- 01. Zubehör. 02. Allgemeine Ansicht. 03. Versammlung und Position. 04. Stromversorgung. 05. Einschalten. 06. Bereithalten. 07. Volumen. 08. Stumm. 09. Einstellen der Höhen. 10. Einstellen der Bässe. 11. Entzerrer. 12. Bluetooth-Verbindung und -Lösung. 13. USB-Modus. 14. Musik abspielen (BT\* und USB\*\*). 15. Wiederholungsmodus. 16. Hilfsbuchsen-Modus. 17. Koaxialer Modus. 18. Optischer Eingabemodus. 19. HDMI-Modus.
SE- 01. Tillbehör. 02. Översikt. 03. Montering och position. 04. Matning. 05. Sätta på. 06. Stäng av (Standby). 07. Volym. 08. Tystnad. 09. Justera diskanten. 10. Justera bas. 11. Utjämnare. 12. Bluetooth-anslutning och lösning. 13. USB-läge. 14. Spela musik (BT\* och USB\*\*). 15. Repetitionsläge. 16. Hjälpputtgåsläge. 17. Koaxialläge. 18. Optiskt ingångsläge. 19. HDMI-läge.
DK- 01. Tilbehør. 02. Generelt overblik. 03. Montering og position. 04. Fodring. 05. Tænde for. 06. Sluk (Standby). 07. Bind. 08. Stilhed. 09. Juster diskanten. 10. Juster bas. 11. Ekvalizer. 12. Bluetooth-forbindelse og løsning. 13. USB-Tilstand. 14. Afspil musik (BT\* og USB\*\*). 15. Gentagelses-tilstand. 16. Hjælpestikketilstand. 17. Koaxial tilstand. 18. Optisk inputtilstand. 19. HDMI-tilstand.
HU- 01. Tartozékok. 02. Áttekintés. 03. Felszerelés és helyzet. 04. Táplálás. 05. Bekapcsol. 06. Kapcsolja ki (készenlét). 07. Hangerő. 08. Csend. 09. Állítsa be a magas hangot. 10. Állítsa be a basszust. 11. Kiegyenlítő. 12. Bluetooth kapcsolat és megoldás. 13. USB mód. 14. Zene lejátszása (BT\* és USB\*\*). 15. Ismétlődő mód. 16. Kiegészítő aljzat üzemmód. 17. Koaxiális üzemmód. 18. Optikai bemeneti mód. 19. HDMI mód.
RO- 01. Accesorii. 02. Vedere generală. 03. Montare și poziție. 04. Hrănire. 05. Aprinde. 06. Opriți (Standby). 07. Volum. 08. Tăcere. 09. Reglați treble. 10. Reglați basul. 11. Egalizator. 12. Conexiune și soluție Bluetooth. 13. Mod USB. 14. Redați muzică (BT\* și USB\*\*). 15. Mod Repetare. 16. Mod de priză auxiliară. 17. Modul coaxial. 18. Mod de intrare optică. 19. Mod HDMI.
CS- 01. Dodatna oprema. 02. Pregled. 03. Montaža i položaj. 04. Hrănjenje. 05. Uključiti. 06. Isključite (stanje pripravnosti). 07. Zapremina. 08. Tišina. 09. Podesite visoke tonove. 10. Podesite bas. 11. Ekvilajzer. 12. Bluetooth veza i rješenje. 13. USB režim. 14. Reprodukujte muziku (BT\* i USB\*\*). 15. Mod ponavljanja. 16. Režim pomoćne utičnice. 17. Koaksijalni način rada. 18. Optički način unosa. 19. Režim HDMI.
BG- 01. Аксесоари. 02. Преглед. 03. Монтаж и позиция. 04. Хранене. 05. Включи. 06. Изключете (готовност). 07. Сила на звука. 08. ням. 09. Регулиране на високите. 10. Регулиране на баса. 11. Изравнител. 12. Bluetooth връзка и решение. 13. USB режим. 14. Пускате музика (BT\* и USB\*\*). 15. Режим на повторение. 16. Режим на спомагателния жак. 17. Коаксиален режим. 18. Оптичен режим на въвеждане. 19. HDMI режим.
GR- 01. Αξεσουάρ. 02. Επισκόπηση. 03. Συναρμολόγηση και θέση. 04. Παροχή ηλεκτρικού ρεύματος. 05. Ενεργοποίηση. 06. Περιμενε. 07. Ένταση ΗΧΟΥ. 08. Βουβός. 09. Ρύθμιση του τριβίου. 10. Ρύθμιση μπάσων. 11. Εξισωτής. 12. Σύνδεση και λύση Bluetooth. 13. Λειτουργία USB. 14. Αναπαραγωγή μουσικής (BT\* και USB\*\*). 15. Λειτουργία επανάληψης. 16. Βοηθητική λειτουργία jack. 17. Ομοαξονική λειτουργία. 18. Οπτική λειτουργία εισαγωγής. 19. Λειτουργία HDMI.