

Paper Stock
 See Windchill



PHILIPS

Rasoar
 Rasoio

Série 3000
 Serie 3000

S3343

5D Pivot & Flex Heads
 follow curves for a comfortable shave

PowerCut Blades
 are engineered for a consistent clean shave

Wet or Dry
 for a convenient dry or refreshing wet shave

3000 Series

Un rasage rapide et confortable
 Même sur une peau sensible

Les têtes Pivot & Flex 5D suivent les contours du visage, pour un rasage confortable • Les lames PowerCut conçues pour un rasage de près régulier • Utilisation sur peau sèche ou humide • Autonomie de 60 min. Charge de 1 h • Système anti-corrosion • Tondeuse rétractable • Ouverture facile en 1 clic • Entièrement lavable • Charge rapide en 5 min • USB-A Adaptateur secteur non inclus • Emballage sans plastique

Rasatura comoda e veloce
 Anche su pelli sensibili

Le testine Pivot & Flex 5D seguono le linee del viso per una rasatura confortevole • Le lame PowerCut sono progettate per una rasatura pulita e uniforme • Wet & Dry per una rasatura rapida su pelle asciutta o rinfrescante su pelle bagnata • 60 minuti di autonomia, 1 ora di ricarica • Sistema di rasatura anticorrosione • Rifinitore a scomparsa • Apertura con un solo tocco • Completamente lavabile • 5 minuti di ricarica rapida • USB-A Alimentatore non incluso • Confezione senza plastica

5D Pivot & Flex Heads
 follow curves for a comfortable shave

PowerCut Blades
 are engineered for a consistent clean shave

Wet or Dry
 for a convenient dry or refreshing wet shave

www.philips.com/shave

PHILIPS

Shaver

3000 Series

Comfortable, clean shave
 even on sensitive skin

5D Pivot & Flex Heads
 follow curves for a comfortable shave

Wet & Dry
 for a convenient dry or refreshing wet shave

60 min runtime, 1 h charging

Skin Protect technology

Anti-Corrosion Shaving System

Pop-up trimmer

OneTouch Open easy cleaning

Fully washable

5 min quick charge

USB-A charging cable
 Power adapter not included

3000 105 29213.1

part number

8 7200689018630

S3343_13

SCA70LA SCA70LA SV = 1A

Li-Ion

PAP P22

200

FSC MIX LOGO

RECYCLED PAPER

EMBALLAGE + PAPIER

3000 105 29213.1

part number

8 7200689018630

S3343_13

SCA70LA SCA70LA SV = 1A

Li-Ion

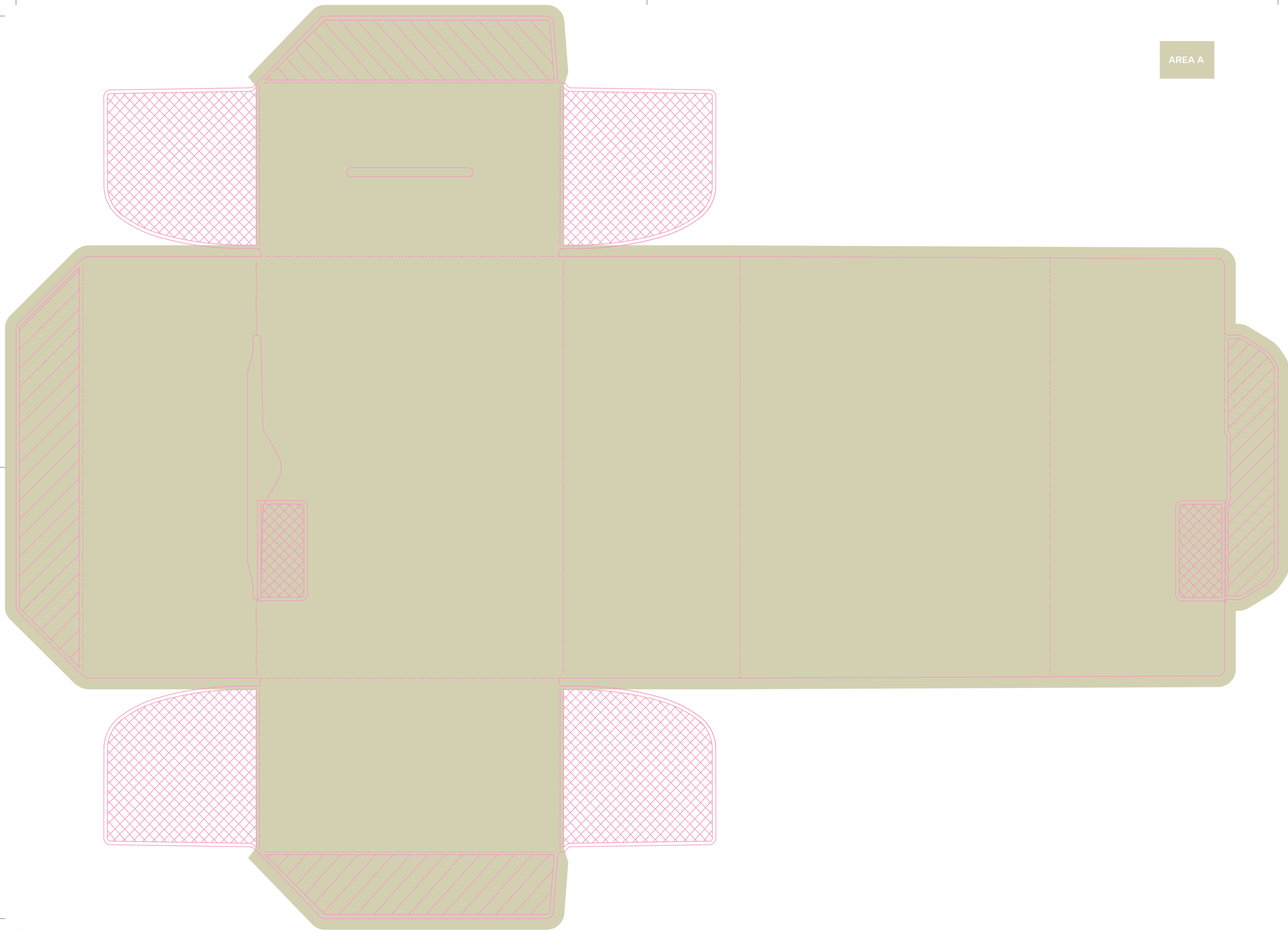
PAP P22

200

FSC MIX LOGO

RECYCLED PAPER

EMBALLAGE + PAPIER



AREA A

SGS & CO			
Main Article Group Shaving Core Range (E01)			
Project name	████████████████████		
SGS number	7308051		
12-NC.NBR	300010592131		
Masterdrawing	300010152561		
Barcode No.	8720689018630		
Size	BWR		
Type			
Operator(s)	boopathi.vairavasamy		
VERSION No.	██████████		
Date in	13/04/2023		
Date amended	26-Apr-23		
<input type="checkbox"/> Cyan	<input type="checkbox"/> Magenta	<input type="checkbox"/> Yellow	<input type="checkbox"/> Black
<input type="checkbox"/> AREA A	<input type="checkbox"/> Diecut	<input type="checkbox"/>	<input type="checkbox"/>
<input type="checkbox"/>	<input type="checkbox"/>	<input type="checkbox"/>	<input type="checkbox"/>
Date Check			
<input type="checkbox"/> Check to Client Brief			
Artwork document			
<input type="checkbox"/> Legend	<input type="checkbox"/> Number of colors		
<input type="checkbox"/> 12NC	<input type="checkbox"/> Trapping/Bleed		
<input type="checkbox"/> Barcode	<input type="checkbox"/> Hi-res Images		
<input type="checkbox"/> Diecut	<input type="checkbox"/> Job Size		
Deliverables			
<input type="checkbox"/> PDF 1.3	<input type="checkbox"/> Epson		
<input type="checkbox"/> PDF 1.5	<input type="checkbox"/> Leapfile		
QC Lithographer SGS			
Product Manager ██████████			
Project Manager Shannon Witcombe			