

PHILIPS

hue personal
wireless
lighting

Gradient lightstrip

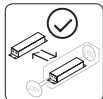
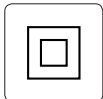
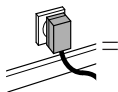
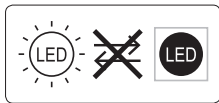
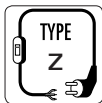
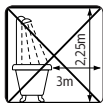
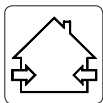
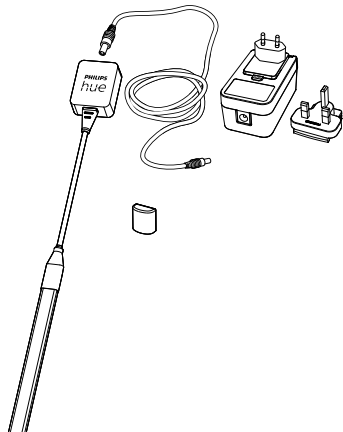


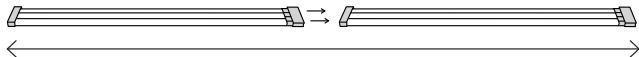
HUE serial number



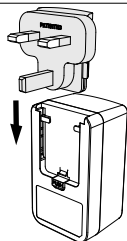
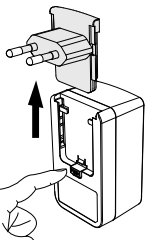
User manual
Benutzerhandbuch
Notice d'emploi
Manual de usuario
Manual do usuário
Manuale d'uso

Incl.





Max. 10m



UK

click



OK

Not OK

LED!

Not OK

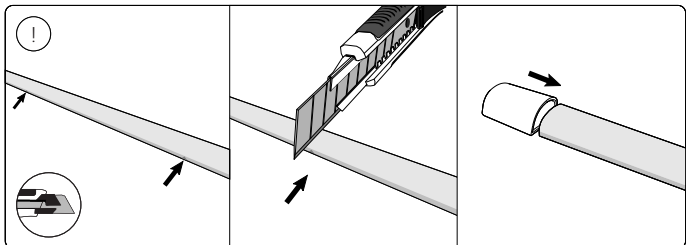
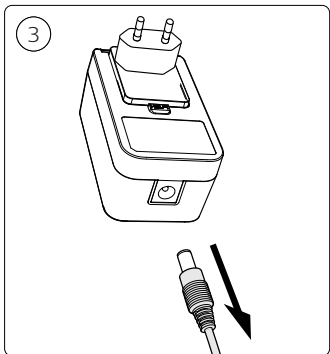
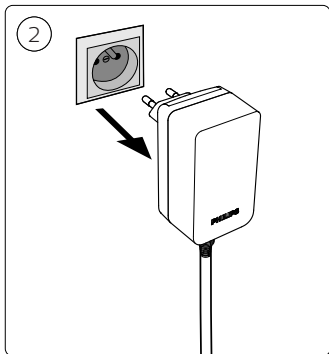
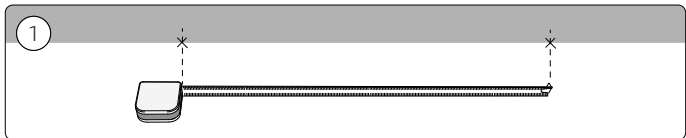
Min. 90°

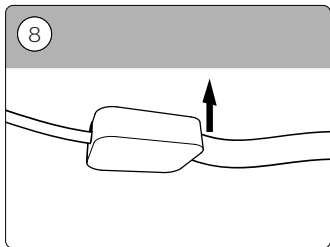
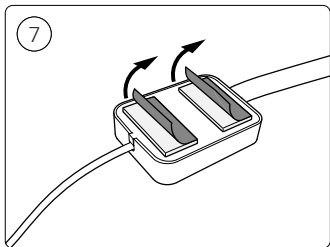
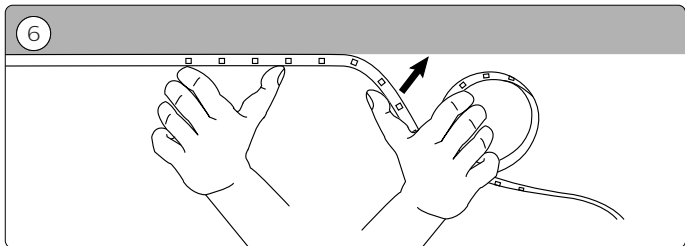
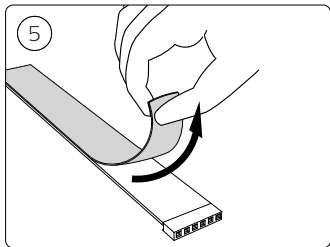
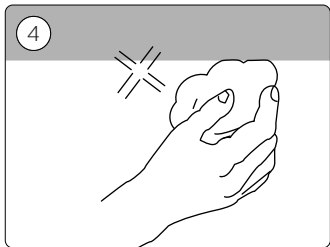


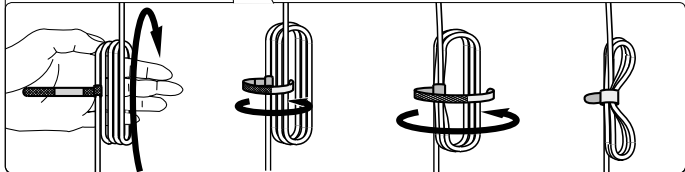
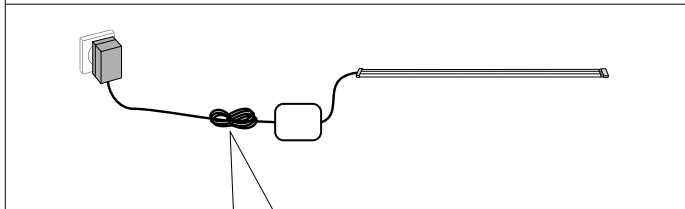
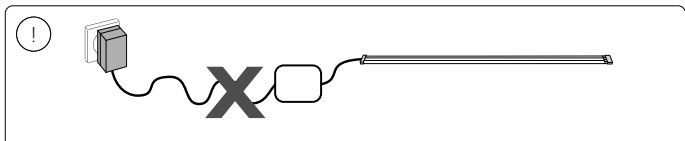
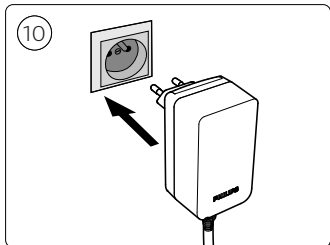
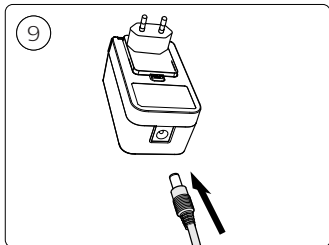
X

X





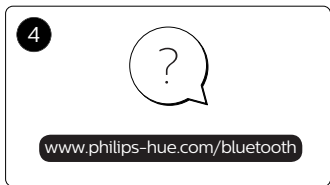
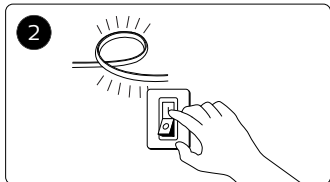
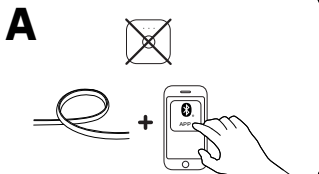


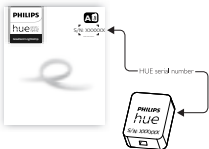
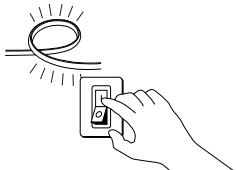
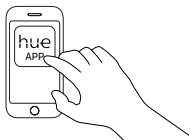


To connect your new Hue luminaire, select the installation instruction (A or B) that is applicable for you.

Discover

For more information visit
philips-hue.com



B**1****2****3****4****5**

www.philips-hue.com/philiphueapp

6

DE

Zum Verbinden Ihrer neuen Hue-Leuchte wählen Sie die für Ihre Situation zutreffende Installationsanweisung (A oder B)

Entdecken

Weitere Informationen finden Sie unter www.philips-hue.com

FR

Pour raccorder votre nouveau luminaire, sélectionnez la consigne d'installation (A ou B) qui s'applique à vous.

Découverte

Pour plus d'informations, rendez-vous sur www.philips-hue.com

ES

Para conectar su nueva luminaria Hue, seleccione la instrucción de instalación (A o B) que sea aplicable en su caso.

Descubrir

Para obtener más información, visita www.philips-hue.com

PT

Para ligar a sua nova luminária Hue, seleccione as instruções de instalação (A ou B) que se aplicam a si.

Descobrir

Para mais informações, visite www.philips-hue.com

IT

Per collegare il nuovo apparecchio per l'illuminazione Hue White, selezionare le istruzioni di installazione (A o B) adatte alle proprie esigenze.

Scoperta

Per ulteriori informazioni, visita il sito Internet www.philips-hue.com

NL

Kies de installatie-instructies (A of B) die voor jou van toepassing zijn om je nieuwe Hue armatuur aan te sluiten.

Ontdek

Meer informatie vindt u op www.philips-hue.com

EL

Για να συνδέσετε το νέο φωτιστικό Hue, επιλέξτε τις οδηγίες εγκατάστασης (A ή B) που ισχύουν για το δικό σας προϊόν.

Ανακαλύψτε

Για περισσότερες πληροφορίες, επισκεφθείτε την τοποθεσία www.philips-hue.com

PL

Aby podłączyć nową oprawę oświetleniową Hue, wybierz odpowiednią instrukcję instalacji (A lub B).

Odkrywanie

Więcej informacji można znaleźć na stronie internetowej www.philips-hue.com

CZ

Před připojením svítidla Hue zvolte montážní pokyny (A nebo B) relevantní pro váš systém.

Nabídka

Více informací naleznete na www.philips-hue.com

HU

Az új Hue lámpatest csatlakoztatásához válassza ki a körülményeknek megfelelő telepítési útmutatót (A vagy B).

Fedezze fel

A további tudnivalók a www.philips-hue.com oldalon olvashatók

DA

Tilslut det nye Hue White-armatur som angivet i den relevante installationsanvisning (A eller B).

Opdage

Du kan finde flere oplysinger på www.philips-hue.com

SV

Vid anslutning av en ny Hue-armatur väljer du den installationsanvisning (A eller B) som gäller för dig.

Upptäck

Mer information finns på www.philips-hue.com

NO

For å koble til den nye Hue-lysarmaturen, velg installeringsinstruksjonen (A eller B) som gjelder for deg.

Bli kjent

Du finner mer informasjon ved å gå til www.philips-hue.com

FI

Kytke uusi Hue-valaisin valitsemalla soveltuva asennusohje (A tai B).

Tutustu

Lisätietoja on osoitteessa www.philips-hue.com

SK

Ak chcete pripojiť svoje nové svietidlo Hue, vyberte montážne pokyny (A alebo B), ktoré sa naň vzťahujú.

Objavte

Ďalšie informácie získate na lokalite www.philips-hue.com



Signify
I.B.R.S. / C.C.R.I. Numéro 10461
5600 VB Eindhoven,
the Netherlands
☎00800-74454775

© 2021 Signify Holding
All rights reserved

www.philips-hue.com

3222 639 08571
Last update: 06/2021