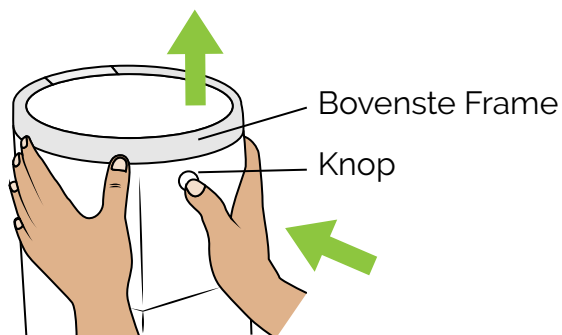


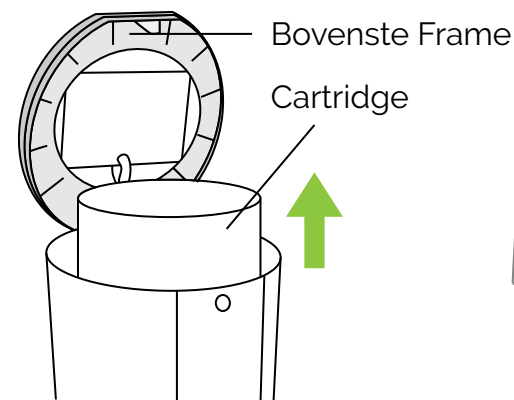
Navulling instructies voor korbell



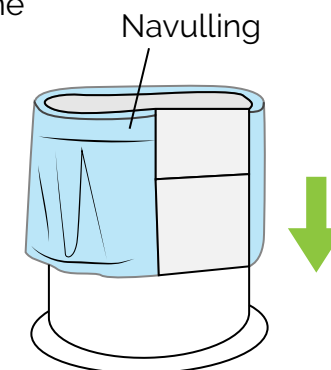
1. Druk op de knop om het grijze bovenste frame los te maken.



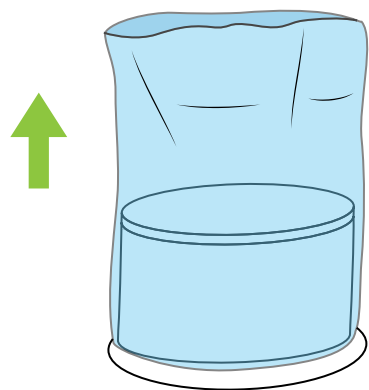
2. Open het bovenste frame en verwijder de lege cartridge.



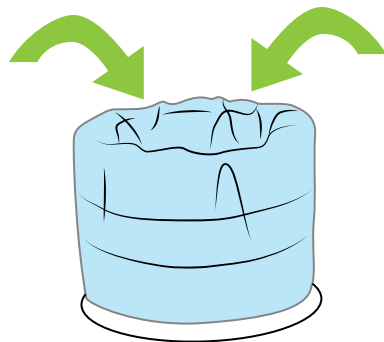
3. Haal de lege cartridge eruit



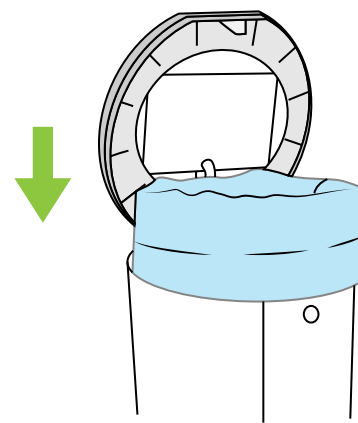
4. Schuif de nieuwe navulling over de cartridge.



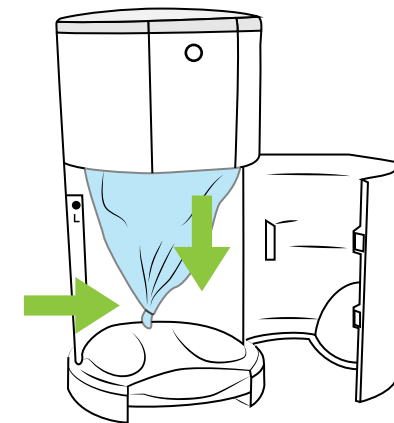
5. Trek de buitenste laag van de navulling omhoog.



6. Trek de navulling door de opening van de cartridge.



7. Plaats de cartridge terug in de luijeremmer.



8. Trek de navulling tot de onderkant van de luijeremmer en sluit af met een knoop.