



Petalk AI

·Remote monitoring·Feeding

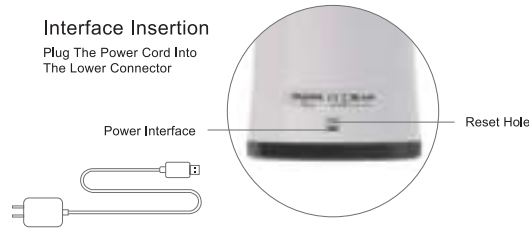


Part description/function description



Interface Insertion

Plug The Power Cord Into The Lower Connector



Description of status indicator light

- Red light: slow flash indicates no food or equipment abnormality
- Green light: slow flash indicates configurable status Quick flash indicates networking Always-on indicates successful connection
- Blue light: always-on indicates that someone is feeding (if the account is logged in without entering the feeding interface, it will not light up)



Choose a suitable cover according to dog food, (3 options available)

Dog Food Reserve

Press the food storage facility switch to open the cover and put the dog food into the food storage facility. After putting in a proper amount of dog food, close the cover.

Tips:

1. Choose dog food with diameter from 7-16mm
2. Amount of food cannot overflow Max line.

bottom cover:

Open the bottom cover to do cleaning

Attentions

1. Minimum requirements for equipment use
 - 1.1 Equipment end web requirement
In case of standard resolution, the uplink bandwidth speed is at least 512kpbs. In case of high resolution, the uplink bandwidth speed is at least 1Mkpbs.
 - 1.2 app end web:
The uplink bandwidth speed is at least 512kpbs for standard resolution and at least 1Mkpbs for high resolution.
2. Please do not allow anything other than pet food to fall into the material pail, otherwise the equipment will become abnormal for operation or even a pet safety problem may arise. The dog food diameter is 7-16MM.
3. To prevent pets from bringing that product down, it is suggested to place it in a corner or against wall or at a height of 45-80MM.
4. Do not allow pets to bite the electric wire, which may lead to death due to electric shock.
5. Please ensure that any child uses this equipment under the guide of an adult.
6. Do not touch the food outlet in food discharging.

Troubleshooting

1. If connection fails when hearing "Doo" in reading the 2D code for adding equipment, check if the Wi-Fi password is correct and connect again, or change to equipment hot point for equipment addition. (See if the equipment indicator lamp is green and blinks. If the green lamp is on constantly, press and hold the equipment Reset hole. On hearing "Doo" after 5 seconds, have the equipment resume to the addition state).
2. In case of failing to read the 2D code and hear "Doo" in adding equipment, check if the equipment indicator lamp is green and blinks. If the green lamp is on constantly, it indicates that there has been an equipment addition. You can press and hold the equipment Reset hole. On hearing "Doo" after 5 seconds, have the equipment resume to the addition state. Just connect again.
3. In case of any error in equipment addition, you may have used 5G Wi-Fi for binding. Wireless Wi-Fi supports 2.4GHz frequency band only. 5G Wi-Fi is not supported temporarily. Please adjust for 2.4G Wi-Fi.
4. The real-time pictures are not smooth. Confirm if the web uploading and downloading rates meet the equipment work requirements. If the web rate is too low, you may choose a smooth mode.
5. The equipment displays offline. Check if the web is normal.
6. When there is no food, there will be 5 automatic ejections. If there is no food for 5 times, the red lamp will be on, indicating that there is no food. Just add some food.
7. That the equipment red lamp is on indicates that there is no food or the equipment is abnormal.
8. When the equipment does not work or the power is not supplied normally, check if the rated working voltage is 5V and the rated power 10W/2000mA.
9. When there are small fragments falling into the equipment, you can open the bottom cleaning cover to clear the same.



Even elsewhere, I have never been separated from you!

Download and install app



App Store



Google play

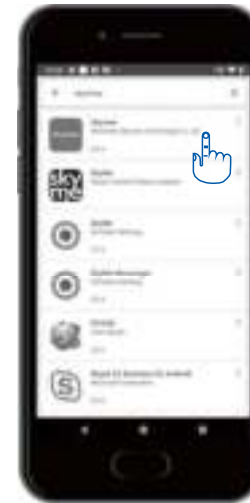


Application Treasure

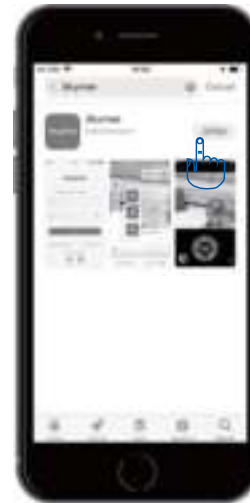
The mobile phone scans the QR code or logs on the website to download and install the app.



For Android users, enter Google play to search "skymee" and download.

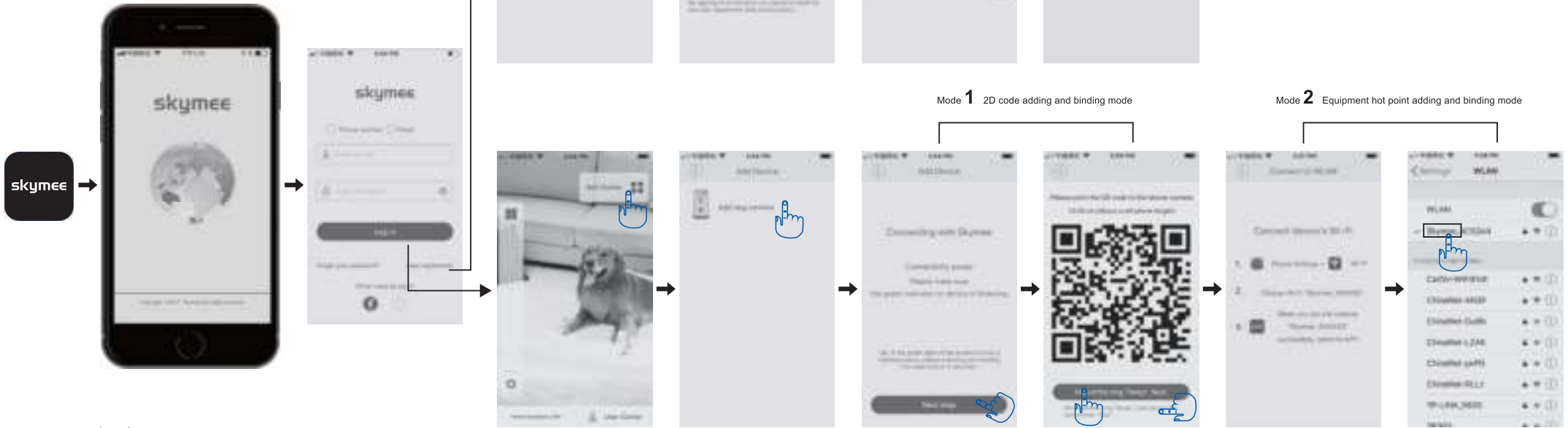


For Iphone users, enter App store to search "skymee" and download.



Setting

App registration and binding



FCC Statement

This equipment has been tested and found to comply with the limits for a Class B digital device, pursuant to part 15 of the FCC rules. These limits are designed to provide reasonable protection against harmful interference in a residential installation. This equipment generates, uses and can radiate radio frequency energy and, if not installed and used in accordance with the instructions, may cause harmful interference to radio communications. However, there is no guarantee that interference will not occur in a particular installation. If this equipment does cause harmful interference to radio or television reception, which can be determined by turning the equipment off and on, the user is encouraged to try to correct the interference by one or more of the following measures:

- Reorient or relocate the receiving antenna.
 - Increase the separation between the equipment and receiver.
 - Connect the equipment into an outlet on a circuit different from that to which the receiver is connected.
 - Consult the dealer or an experienced radio/TV technician for help.
- To assure continued compliance, any changes or modifications not expressly approved by the party responsible for compliance could void the user's authority to operate this equipment. (Example- use only shielded interface cables when connecting to computer or peripheral devices).

This equipment complies with Part 15 of the FCC Rules. Operation is subject to the following two conditions:

- (1) This device may not cause harmful interference, and
- (2) This device must accept any interference received, including interference that may cause undesired operation.

FCC Radiation Exposure Statement:

The equipment complies with FCC Radiation exposure limits set forth for uncontrolled environment. This equipment should be installed and operated with minimum distance 20cm between the radiator and your body.

