

ALARM DEVICE

- Wake up the screen by touching keypad area and then press "*" .
- If the voice prompts "Alarm function on",which means the safe now is in alert state.
- In alert state, the alarm sounds when the wrong codes have been entered 3 times or wrong fingerprint have been entered 5 times consecutively .

⚠ **CAUTION:** You can stop the alarm by inputting the correct code or fingerprint. Or you have to open the door by emergency key and power down to stop the alarm.

SYSTEM INITIALIZATION

If you need to resume to default setting,press the green reset button and hold on until green light flashes with a success voice prompt("Clear").

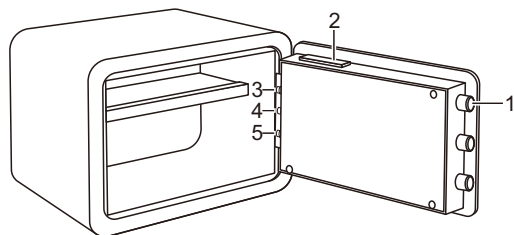
IMPORTANT NOTES

- Do not use liquid or a sprayer to clean the safe. Use a wet cloth instead.
- Do not place the product in an insecure and elevated place, lest it may fall over and damage the product or hurt people. Never spill liquid over the control panel, or it may cause electrical shock to the electronic parts inside and disable their proper functions.
- Never try to dismantle the product by yourself. Unguided Dismantling and incorrect reassembly of the inside of back cover may damage the electrical circuit and affects its performance. Where maintenance is required, please contact the local service center or local distributor.

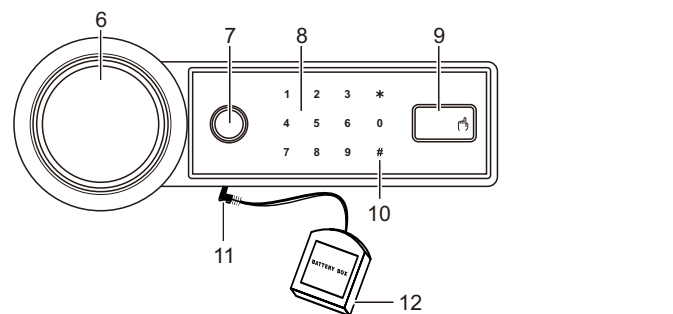
FINGERPRINT LOCK SAFE(FOR E8700E SERIES)

⚠ **Please do not keep emergency keys in your safe!**

Schematic drawing of case



Schematic drawing of control panel



- | | |
|-----------------------|-----------------------------------|
| 1 Bolts | 7 Fingerprint Scanner |
| 2 Battery Compartment | 8 Keypad |
| 3 Red Reset Button | 9 Emergency Lock Cover |
| 4 Light | 10 Confirming Button |
| 5 Green Reset Button | 11 Jack for External Power Source |
| 6 Knob | 12 External Battery Box |

FEATURE

- All voice prompt, easy operation.
- Maximum 32 fingerprints can be registered.
- Constructed from solid to resist attack from hand & power tools.

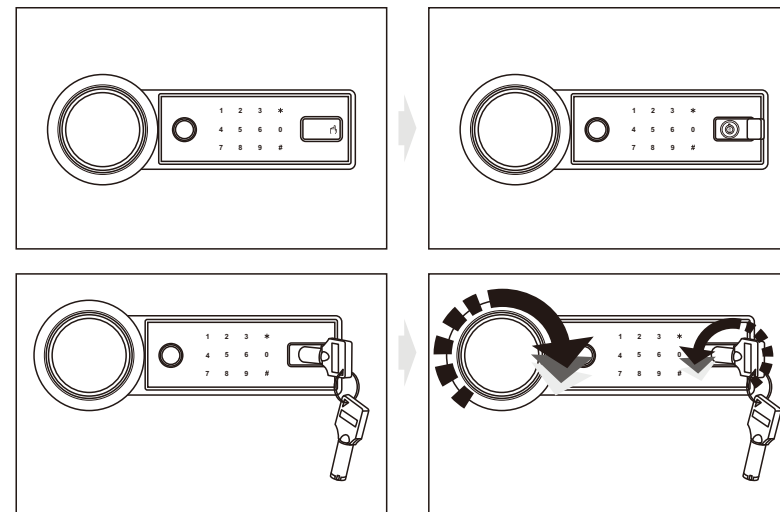
PREPARATION

- The safe on delivery comes with no registered fingerprints. And the preset user code of safe is "1234".
- The safe is not loaded with batteries, you may insert the emergency key into the emergency keyhole to open the door.
- Take the battery compartment box out and load 4 X AA batteries. Please pay attention to the polarity of the batteries.

OPENING YOUR SAFE FOR THE FIRST TIME

- Press the emergency lock cover, you will see the emergency lock.
- Insert the emergency key into the keyhole and turn the key anticlockwise.
- Then press and turn the knob clockwise to open the door.

⚠ **CAUTION:** Please test the keys and store them in a secure place, not inside of the safe.



POWER SUPPLY

- Open the door.
- Take the battery compartment out.
- Replace 4 fresh batteries by lining them up in a manner as indicates by the "+" and "-" signs.

⚠ **CAUTION:** If the batteries are low,please replace them in time. While choosing battery, suggest to use high-powered alkaline battery with high quality. Please do not use any inferior, counterfeit or carbon-zinc batteries.

SETTING THE USER CODE

- Keep the door open and press the red reset button.
- Follow the voice prompt ("Please input first new password") to input the new user code (3 to 8 digits) and then press "#" to confirm.
- If the voice prompts "Set successfully",which means you have set your user code successfully.

SETTING THE MASTER CODE

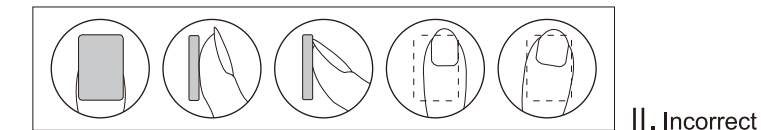
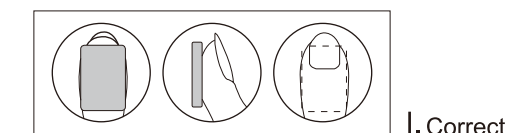
- Wake up the screen by touching the keypad area,input "00" with the door open,then press the red reset button.
- Follow the voice prompt ("Please input second new password") to input the new master code (3 to 8 digits) and then press "#" to confirm.
- If the voice prompts "Set successfully",which means you have set your master code successfully.

FINGERPRINT REGISTRATION

- Keep the door open and press the green reset button .
- Place your finger on the fingerprint scanner until the green light flashes with the voice prompts "Succeeded",which means the fingerprint registration is successful.
- If the red light flashes with the voice prompts"Failed",which means your fingerprint did not get recorded and you have to start over.
- According to the method, you can register other fingerprints.

⚠ **CAUTION:** Maximum 32 fingerprints can be registered. Suggest to register the same fingerprint in multiple times.

⚠ **CAUTION:** In order to improve the correct rate of finger identification, users can refer to the following advices: Suggest not use the finger collector screen in bright light . Suggest each user registers 2-3 fingerprints. Suggest female and children try to register with thumb and middle finger. Try to press with even power. Ifs not good to press with too heavy or light power. Suggest to press gently. If encountered with very dry weather, suggest to breathe toward fingers till a little wet.



UNLOCK THE SAFE

Fingerprint unlock

- Place the registered finger on fingerprint scanner until the voice prompts"Please open the door",which means the fingerprint has been accepted.
- Then press and turn the knob clockwise to open the safe.

Password unlock

- Wake up the screen by touching the keypad area,enter the user code or master code that you already set, then press "#" to confirm.
- Then press and turn the knob clockwise to open the safe.

⚠ **CAUTION:** Please open the door within 5 seconds after prompted by voice.Or you have to start over.

CHANGE ENTRY MODE

- Keep the door open.
- Press "1" ,then press the red reset button to enter individual mode ,which means either fingerprint or digital code can open the safe.
- Press "2" ,then press the red reset button to enter composite mode ,which means both fingerprint and digital code could open the safe.