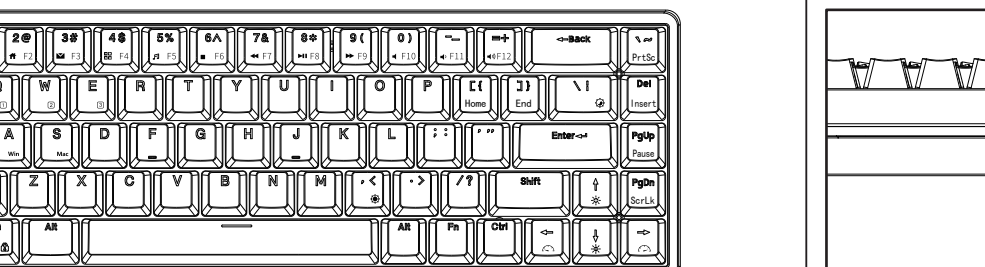




USER MANUAL

Mechanical Wireless Keyboard

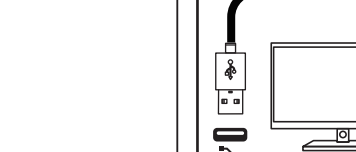
PRODUCT BASIC



Keyboard

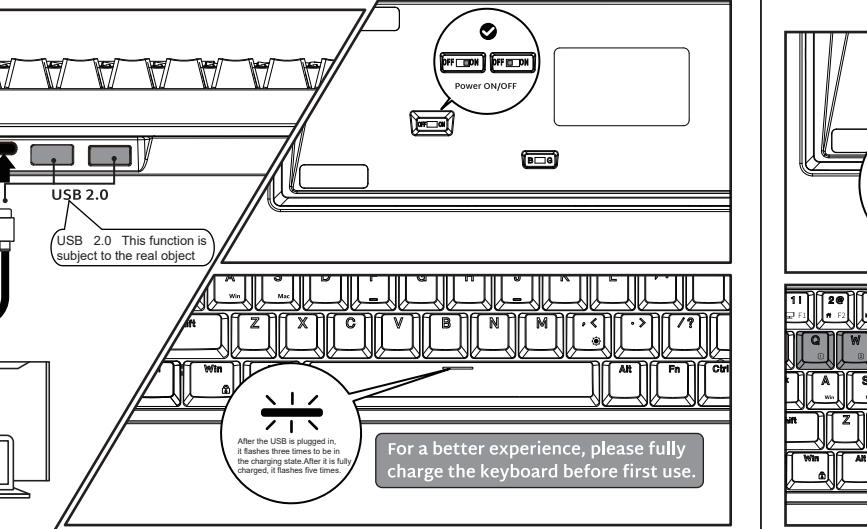


Type-C Cable



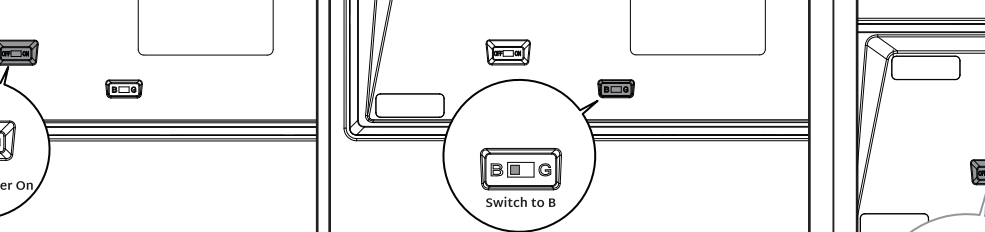
User Manual

WIRED MODE & CHARGING



HOW TO USE

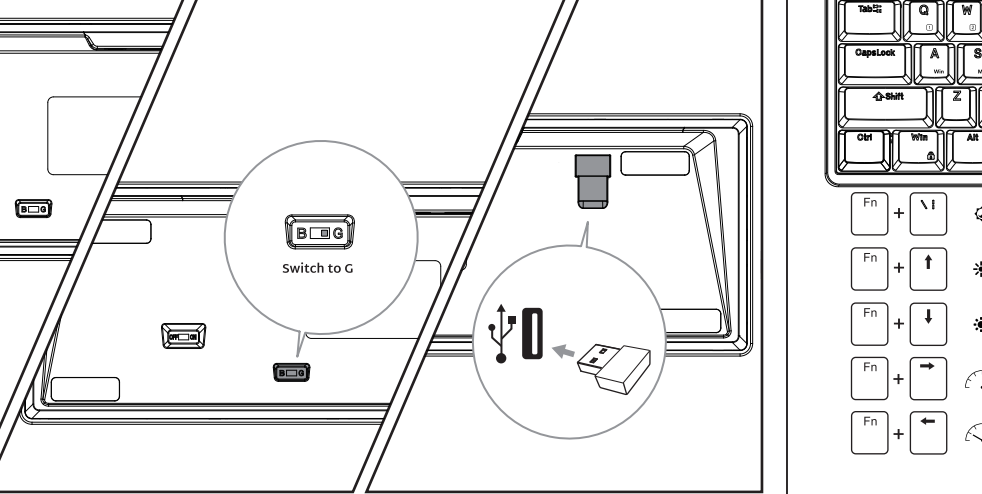
BT Connection



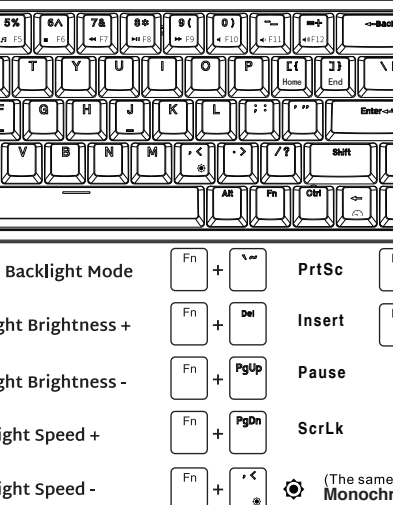
- 1 SHORT PRESS
Fn+Q/W/E/ to BT Channel
- 2 LONG PRESS
Fn+Q/W/E/Entry Pairing Mode

HOW TO USE

2.4Ghz



BACKLIGHT CONTROL



SPECAAL FUNCTION KEYS

- | | | | |
|--------|----|--------|-----|
| Fn + 1 | F1 | Fn + 7 | F7 |
| Fn + 2 | F2 | Fn + 8 | F8 |
| Fn + 3 | F3 | Fn + 9 | F9 |
| Fn + 4 | F4 | Fn + 0 | F10 |
| Fn + 5 | F5 | Fn + | F11 |
| Fn + 6 | F6 | Fn + | F12 |

MULTIMEDIA KEY FOR WINDOWS

In Windows mode(FN + A: switch to Windows system)

FN + Left Ctrl (The primary key function and the second function of the composite key are interchanged)

- | | | | |
|---------|------------|----------|--------------|
| Fn + F1 | Computer | Fn + F7 | Last song |
| Fn + F2 | Browser | Fn + F8 | Play / pause |
| Fn + F3 | Mailbox | Fn + F9 | Next song |
| Fn + F4 | Calculator | Fn + F10 | Mute |
| Fn + F5 | Player | Fn + F11 | Volume- |
| Fn + F6 | Stop | Fn + F12 | Volume+ |

MULTIMEDIA KEY FOR MAC

MAC system(FN + s: switch to MAC system)

FN + Left Ctrl (The primary key function and the second function of the composite key are interchanged)

- | | | | |
|---------|--|----------|--------------|
| Fn + F1 | | Fn + F7 | Last song |
| Fn + F2 | | Fn + F8 | Play / pause |
| Fn + F3 | | Fn + F9 | Next song |
| Fn + F4 | | Fn + F10 | Mute |
| Fn + F5 | | Fn + F11 | Volume- |
| Fn + F6 | | Fn + F12 | Volume+ |

SYSTEM REQUIREMENTS

BT Mode

- Device With Bluetooth 5.1 or later
- PC: Windows 7 or Later
- Mac: macOS X 10.6 Snow Leopard or Later
- iOS: All iPads/iPhone 5 or Later
- Android: 5.0 Lollipop or Later

Wired/2.4Ghz Mode

- Computer With Available USB port
- PC: Windows 7 or Later
- Mac: macOS X 10.6 Snow Leopard or Later

Have an issue with one of our RK products?

Feel free to contact us with any product issues or questions. We will reply as quickly as possible to ensure all your needs are handled. Please contact the seller



WIRELESS TIMELESS ENDLESS