


Smart Life App

Download & Registration

1. Use your mobile phone to scan the QR code below to download the "Smart Life" APP. You can also search for "smart life" in the APP store or Google Play to install the APP.



2. Open the "Smart Life" APP and use your phone number or e-mail to register your "Smart Life" account, then login.
3. Connect the mobile phone to the home wireless network, and turn on the mobile phone Bluetooth (please select 2.4GHz WiFi network)


Open the "Smart Life" APP

Enter the homepage of the "Smart Life" APP. Click "+" to select to add a appliance, the APP will display manual addition and automatic discovery.

Automatic discovery: When the corresponding authority is turned on, the appliance can be automatically discovered, and the appliance needs to be in the network configuration state and turned on.

Manually add: select the name corresponding to the product, WIFI+Bluetooth mode.

EN living smart



Ice Cube Maker
Living Smart LSI100S

技术要求:

- 1、彩盒、纸卡：物料材质和尺寸要按文档要求，成品尺寸偏差2-3mm内的要求；
- 2、外箱：物料材质和尺寸要按文档要求，成品尺寸偏差正5mm内的要求；
- 3、珍珠棉：珍珠棉粘合处要平整、胶水要均匀、成品尺寸偏差2-3mm内的要求；
- 4、说明书，保修卡，标贴画册等印刷类包材，必须符合品质部验货要求；

*所有包材详细可对照:说明书检验作业指引: YWT-WI-PZ-15
 印刷标贴件检验作业指导: YWT-WI-PZ-17
 PVC标贴件检验作业指引: YWT-WI-PZ-21

- ①印刷内容、图案、文字字体应符合图纸或封样件要求，文字图案应清晰、饱满、无脱色及明显溢边；位置准确，水平偏斜不允许超过5mm，图案颜色深浅一致，油墨附着性好，用手指轻擦不脱色；
- ②包装物料须有防护措施，不允许因包装、运输等损坏其外表面；
- ③产品需符合欧盟RoHS指令规定的六种有害物质要求；

TECHNICAL REQUIREMENTS

1. Color box&paper card: material and size should be according to document requirements, the size of the finished product deviation within 2-3mm requirements;
2. Carton: material and size should be according to document requirements,the size of the finished product deviation within plus 5-10mm requirements;
3. PE foam: the bonding place of PE foam should be smooth, the glue should be even, the size of the finished product deviation within 2-3mm requirements;
4. Manual, warranty card, label, album and other printing materials must meet the inspection requirements of the quality department;

* Details of all packaging materials can be compared with: Inspection guide for incoming materials of packaging cartons -document No. : YWT-WI-PZ-15,YWT-WI-PZ-17,YWT-WI-PZ-21

- ① The printed contents, patterns and fonts shall meet the requirements of drawings or sealed samples, and the patterns shall be clear, full, no decolorization and obvious overflow edge; and the position shall be accurate , horizontal deflection is not allowed to exceed 5mm, pattern shall be consistent color, good ink adhesion, and not decolorizing with fingers ;
- ② Packing materials must have protective measures and are not allowed to damage their outer surface due to packaging and transportation.
- ③Products need to comply with the six hazardous substance requirements specified by the EU RoHS

					Molde: ICY3		图号 Drawing No.	ICY3-SMS001
							版本 Version	A1
标记 Mark	次数 Frequency	文件号 File No	签名 Signature	日期 Date	处理工艺 Treatment process	折页式	物料名称 Material name	ICY3英文说明书
设计 Design	林家樑	标准化 Standardizatio	白复旦		尺寸 Size	75*130mm	材质 Material	100g双胶纸
审核 Audit	廖日平				表面处理 Treatment process		物料编码 Material coding	1100010594
工艺 Craft	汤龙虎	审批 Approve	罗天		克重 Weight		广东英为拓科技有限公司 GUANGDONG INVITOP TECHNOLOGY CO.,LTD.	
日期 Date	2022. 12. 12				比例 Proportion	1: 1		



Ice Cube Maker
Living Smart LS1100S

01

Important

In order to avoid harm caused by misuse, please read the instruction manual carefully before using this product, and use this product strictly in accordance with the purpose stated in the instruction manual.

Warning

- When positioning the appliance, ensure the supply cord is not trapped or damaged.
- Do not locate multiple portable socket-outlets or portable power supplies at the rear of the appliance.
- Keep ventilation openings, in the appliance enclosure or in the built-in structure, clear of obstruction.
- Do not use mechanical devices or other means to accelerate the defrosting process, other than those recommended by the manufacturer.
- Do not use electrical appliances inside the food storage compartments of the appliance, unless they are of the type recommended by the manufacturer.
- Do not store explosive substances such as aerosol cans with a flammable propellant in this appliance.
- If the supply cord is damaged, it must be replaced by the manufacturer, its service agent or similarly qualified persons in order to avoid a hazard.
- The refrigerant and insulation blowing gas are flammable. When disposing of the appliance, do so only at an authorized waste disposal centre. Do not expose to flame.

- This appliance is not intended for use by persons (including children) with reduced physical, sensory or mental capabilities, or lack of experience and knowledge, unless they have been given supervision or instruction concerning use of the appliance by a person being responsible for their safety.
- Children should be supervised to ensure that they do not play with the appliance.
- This appliance can be used by children aged from 8 years and above and persons with reduced physical, sensory or mental capabilities or lack of experience and knowledge if they have been given supervision or instruction concerning use of the appliance in a safe way and understand the hazards involved. Children shall not play with the appliance. Cleaning and user maintenance shall not be made by children without supervision.
Children between the ages of 3 and 8 are not allowed to load and unload refrigeration equipment

To avoid contamination of food please respect the following instructions

- Opening the door for long periods can cause a significant increase of the temperature in the compartments of the appliance.
- Clean regularly surfaces that can come in contact with food and accessible drainage systems.
- Store raw meat and fish in suitable containers in the refrigerator, so that it is not in contact with or drip onto other food.

02

- Two-star frozen-food compartments are suitable for storing pre-frozen food, storing or making ice cream and making ice cubes.
- One-, two- and three-star compartments are not suitable for the freezing of fresh food
- If the refrigerating appliance is left empty for long periods, switch off, defrost, clean, dry, and leave the door open to prevent mould developing within the appliance.

Attention

This product is used for household, commercial or similar purposes: Kitchen, restaurants stores, offices, hotel, farm, similar non-retail and so on.

Safety tips

The most important thing is yours and others safety, we have provided many important safety messages in this manual and on your appliance. Always read and obey all safety messages.


03

This is the safety alert symbol:

All safety messages will follow the safety alert symbol and the word "DANGER" and "WARNING". You can be seriously injured if you don't follow safety instructions.

All safety messages will tell you what the potential hazard is, tell you how to reduce the chance of injury, and tell you what can happen if the instructions are not followed.



The symbol  is a warning and indicates the refrigerant and insulation blowing gas are flammable.

Advice:

Never touch the evaporator surface by hand when the ice maker is working. It may cause frostbite to your skin.

04

Smart Life App

Download & Registration

- Use your mobile phone to scan the QR code below to download the "Smart Life" APP. You can also search for "smart life" in the APP store or Google Play to install the APP.



- Open the "Smart Life" APP and use your phone number or e-mail to register your "Smart Life" account, then login.
- Connect the mobile phone to the home wireless network, and turn on the mobile phone Bluetooth (please select 2.4GHz WiFi network)

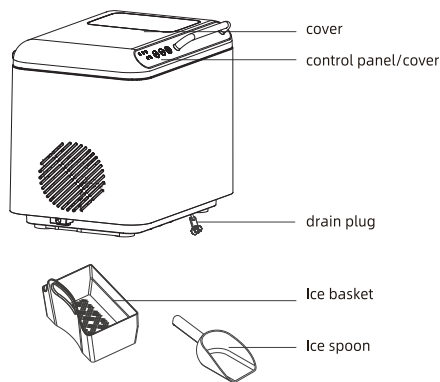
Open the "Smart Life" APP

Enter the homepage of the "Smart Life" APP. Click "+" to select to add a appliance, the APP will display manual addition and automatic discovery.

Automatic discovery: When the corresponding authority is turned on, the appliance can be automatically discovered, and the appliance needs to be in the network configuration state and turned on.

Manually add: select the name corresponding to the product, WiFi+Bluetooth mode.

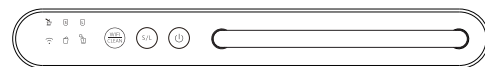
Product overview



Specifications

Country	China	Europe	Korea	USA
Item no	Living Smart LSH100S	Living Smart LSH100S	Living Smart LSH100S	Living Smart LSH100S
Product size	360x270x334mm	360x270x334mm	360x270x334mm	360x270x334mm
Product weight	9Kg	9Kg	9Kg	9Kg
Rated Voltage	220V-240V 50/60Hz	220V-240V 50/60Hz	220V 60Hz	120V 60Hz
Rated Power	150W	150W	150W	150W
Noise	55dB	55dB	55dB	55B
Refrigerate	R290/18g	R290/18g	R600a/23g	R600a/26g
Capacity of water tank	1.3L	1.3L	1.3L	1.3L
Foamer	Cyclopentane	Cyclopentane	Cyclopentane	Cyclopentane

Control panel



- Power button
- Ice cube selection
- Automatic cleaning / Wifi key

Power button

Touch on/off.

Ice selection key

Touch select small ice/large ice in turn.

Automatic cleaning / WIFI key

Automatic cycle cleaning water tank.
long touch for 5 seconds to turn on the WIFI setting mode.

Water shortage indicator

Water shortage corresponding indicator light on.

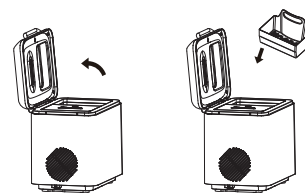
Ice full indicator

The corresponding indicator light is on when the ice is full.

Instructions for use

- Remove all internal and external packaging and check for ice baskets and spoons. If any attachments are missing, please contact the customer service department.
- Remove the ice basket and scrub in warm water, then wash the tank with warm water and a soft cloth.
- Place the ice maker out of direct sunlight and away from heat and radiation. Place the ice maker horizontally and ensure that there is at least 15cm of space between the sides and the back.

- The ice maker is placed in a suitable socket to power on. Open the top cover and put in the ice basket (as shown below).



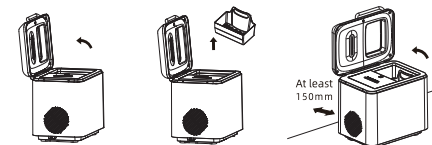
- Touch the Ice cube selection button to select the ice size. If the room temperature is below 15°C, to prevent ice linking, it is recommended that you choose small ice.
- Open the top cover, take out the ice basket, add water to the water tank, keep the water level below the highest mark, put the ice basket back and close the top cover.
- Touch the power button on the control panel to start making ice. The initial water should be more than 1L.
- The duration of each ice-making cycle depends on the size of the selected ice cubes and room temperature. The size of the ice cubes is related to water temperature and ambient temperature.
- After the ice making machine is started. If the pump can not get out of the water, the ice maker will stop automatically, and the "add water" indicator light is on to indicate the water shortage. At this time, the water tank should be filled up, and then press the button to restart the ice making.
- If the ice basket is full, the making of ice stops automatically.

- It is recommended to change water every 24 hours to keep the water clean. If the ice maker is not used for a long time, drain the remaining water from the tank.
- Touch the automatic cleaning button keep by 3 seconds in standby to enter the cleaning function. The cleaning time is 30 minutes. The clean indicator flashes during cleaning. After cleaning, the water in the tank is drained from the bottom of the machine.
- Long touch the WIFI button to enter the WIFI setting mode.

Advice: Use water that is drinkable.

Daily maintenance

- Before / after using this ice machine, it is recommended that you completely clean the whole machine.
- Open the control panel cover (as shown in the figure below) and the upper cover to take out the ice basket;
- Open the water of the drainage plug in dried water;
- Wipe the water tank with diluted cleaners, warm water and soft cloth;
- The outside of the machine should often use diluted cleaners and warm water.
- Wipe dry in a soft cloth;
- Close the drain plug when the machine is not used for a long time, the water tank should be drained and dried.



Troubleshooting

PROBLEM	POSSIBLE CAUSE	SOLUTION
"add water" indicator light on	Lack of Water	Add water to remake ice
	Water tank bottom blocked	Clean
Ice cubes sticking together	The ice making cycle time is too long; The evaporator is too much immersed in the ice box	Stop ice making. After the ice cubes melt, restart ice making and select Small Ice. Adjust the evaporator.
	The water temperature in the tank is too low	Change the water in the tank, the water temperature should be between 8°C and 32°C
The ice making process is normal, but no ice is formed	Ambient temperature or water temperature is too high	Please make ice when the ambient temperature is lower than 32°C, and add a certain amount of cold water to the water tank
	Leak in the refrigeration system	Contact after-sales service
	Clogged refrigeration system	Contact after-sales service

Note: If there is a failure outside the list, please consult the purchase store or contact the manufacturer's after-Sales Service Center to get help.