

HELMET GROUP INTERCOM HEADSETS

HY-02

 Bluetooth®

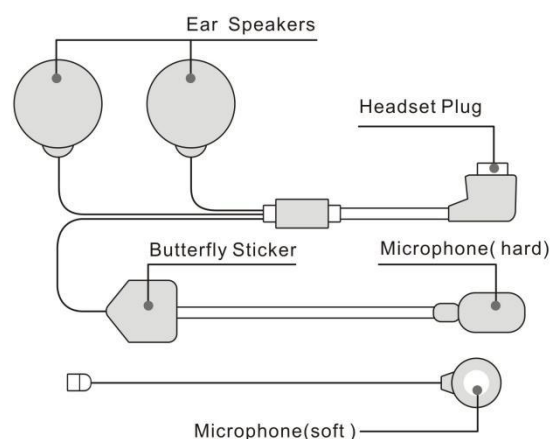
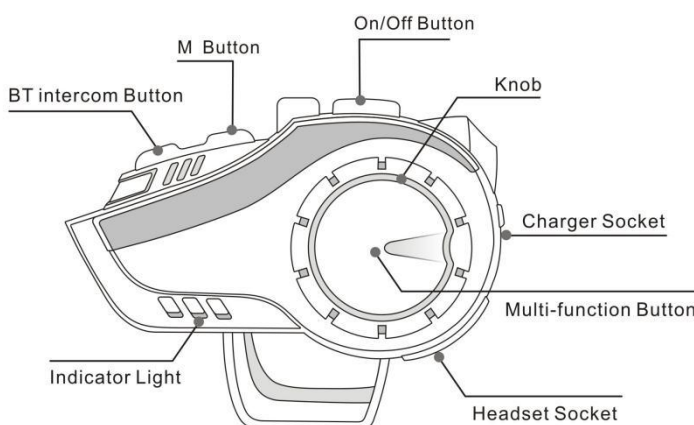


Product overview

Thank you for choosing HY-02 helmet Bluetooth group intercom headset, This is particularly designed for motorcycle riders to meet their needs where motorcycle riders want to fulfil group intercom, answer phone calls, listen to music, listen to FM radio and receive GPS navigation with voice prompts and other functions, They can have a clear, safe and comfortable experience of the helmet Bluetooth group intercom headset.

HY-02 comes out with new v5.0 Bluetooth which allows to stabilize the operation system, noise cancellation with dual intelligence and low power consumption. The earphone equipped with 40MM high quality speakers and intelligent pickup microphone. HY-02 supports multiple devices connected in order to achieve group intercoms and third-party Bluetooth product pairing. It is a fashionable and compact, energy-saving and environmentally friendly device. HY-02 is a humanization design in one of the high-tech Bluetooth group intercom headsets.

Product Indicator Chart



- | | | |
|-------------------------|------------------------|-----------------------------|
| 1. On/Off Button | 5. Headset Socket | 9. Headset Plug |
| 2. Knob | 6. LED Indicator Light | 10. Butterfly Sticker |
| 3. Charging Socket | 7. BT Button | 11. Microphone(soft & hard) |
| 4. Multi-functional key | 8. M Button | 12. Ear Speakers |

Main functions

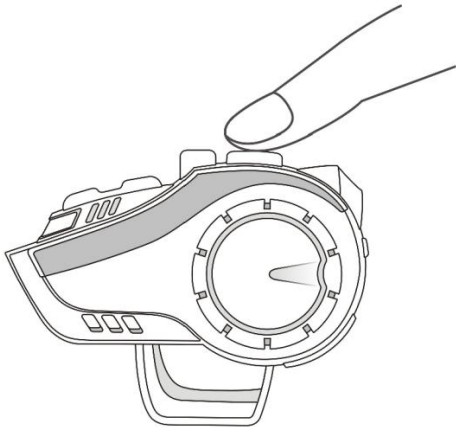
- Qualcomm Bluetooth voice chip version 5.0.
- Intelligent DSP audio, CVC 12th generation noise reduction processing, 16K voice transmission 3D stereo voice.
- One-step button pairing, 2KM distance group intercom (ideal distance).
- 6 person full duplex intercom.
- Ultra-fast connection pairing speed.
- Music sharing functions.
- Music EQ functions.
- FM radio.
- Multi-language prompt sound voices.
- Cell phones, MP3, GPS voice Bluetooth transfer.
- Voice wake-up.
- Automatic answer, support the last dialed number redial.
- Smart microphone pickup.
- Bluetooth is able to connect to other two devices (eg. mobile phones, MP3, GPS).
- Support for voice communication at speeds of 120 km/h.
- 40mm tuning speaker diaphragm, allows you to enjoy Hi-Fi music.
- IP65 waterproof level.
- 900mAh battery capacity, 28 hours continuous intercom and phone, 33 hours listening to music, 500 hours standby.
- Be able to pair with other brand intercoms (Universal Pairing).
- Support online upgrade.

Applicable people:

Motorcycle and bicycle riders; skiers; take-away riders; electric vehicle people; construction and mining workers; firefighters and traffic police, etc.

Key functions and operations

Power On / Off

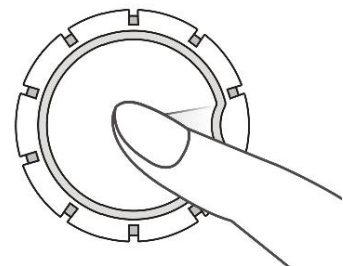


Power on: press on hold the on/off key for 4 seconds, hear the power on tone, the blue light flashes twice, power on is complete.

Power Off: Press on hold the On/Off key for 4 seconds, hear the powered off tone, the red light flashes twice, powered off is complete.

Phone Functions

Answer incoming calls: when there is an incoming call, short press the [multi-function key] to answer the call.



Automatically answer: when an incoming call rings for 8 seconds without any operation, the headset will automatically answer the call.

Reject: Press and hold the [multi-function key] for 2 seconds when you hear an incoming call ring to reject the call.

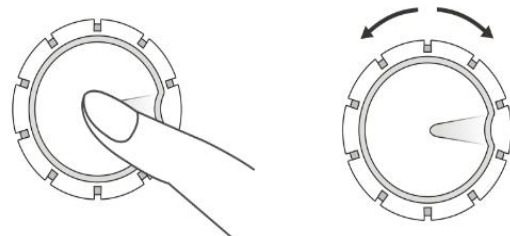
End call: During a call, short press [multi-function key] to end the call.

Last code redial: In standby mode, quickly double-click the On/Off button to automatically dial the last number dialed.

Music control

play/pause:

cell phone Bluetooth connection



mode, press once [multi-function key] is the music play/pause control.

forward: turn the knob rotation to select the next music

Reverse: turn the knob counterclockwise rotation to go back to the previous music.

Volume adjustment

Turn the knob counterclockwise on hold to increase the volume, turn the knob clockwise on hold hold to reduce the volume;

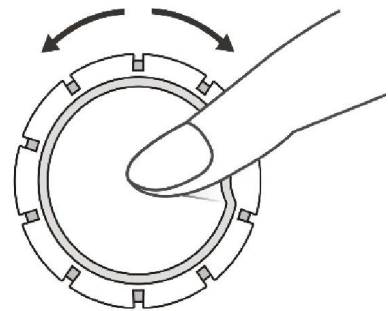
volume adjustment is subject to what you want; the highest volume has an alarm tone prompt.

FM Radio

① **Open the radio:** in standby mode, double-click [multi-function key] to start the FM radio.

② After turning on the FM radio, quickly rotate the knob and then release your hand, you can tune the station and select the station, and keep rotating to select different channels (note that rotating the knob without letting go is to enter the volume adjustment mode).

③ **Turn off the radio:** quickly double-click [multi-function key], the headset will switch back to the previous state.



Attention.

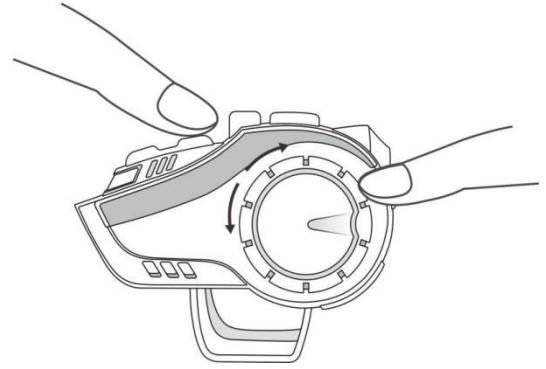
1、 When the indoor signal is weak, in order to make the FM radio work best, you can try to turn on the FM radio near the window or in the open outdoor area.

2、 In radio mode, when there is an incoming call, the headset will automatically disconnect the radio and answer the phone, and automatically return to the radio function when the call ends.

Language Tone Switching

This device has 8 language prompt tone options.

When the device powered on, press and hold the M key while rotating the knob key, you can switch the language prompt tone, each operation switches to the next language, can be cyclic operation.



How to Pair

Pairing with mobile phone

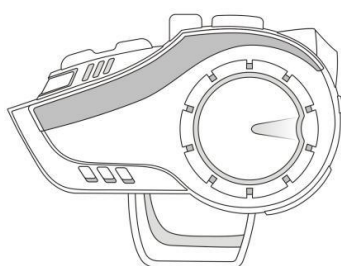
Place the device and the cell phone within a distance of 1 meter in between.

Pairing phone method one:

1) **Turn on Bluetooth:** When the device powered off, press and hold the switch button for 6 seconds until the red and blue lights flash alternately and enter the Bluetooth waiting pairing state.

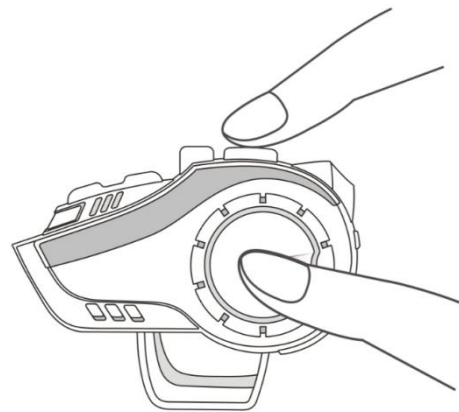
2) **Search mobile phone Bluetooth:** open mobile phone Bluetooth settings to search Bluetooth device nearby, select "**Hysnox**" to connect and pair. will be accompanied by a beep "Bluetooth is connected" after successful pairing. Means the Bluetooth connection done successfully.

Note: If the device has a pairing record with the cell phone, the device will automatically connect to the cell phone Bluetooth after power on, no need to repeat the pairing (provided that the cell phone Bluetooth is open).



Pairing cell phone method two:

After power on, in the standby state (blue light blinking), you can also press and hold the [multi-function key] + on/off Button for 4 seconds, until the red and blue lights alternately blink, enter the Bluetooth waiting for pairing state, the phone search the device Bluetooth name "**Hysnox**", click connect to complete the pairing.



This Bluetooth connection method is practical for group intercom pairing successfully and then go to connect cell phone Bluetooth, or music sharing operation when connecting cell phone Bluetooth.

Pairing of two or more Bluetooth intercoms for group intercom

1、 Pairing intercoms between two Bluetooth intercoms (AB)

Placing two Bluetooth intercoms within 1 m.

Matching steps:

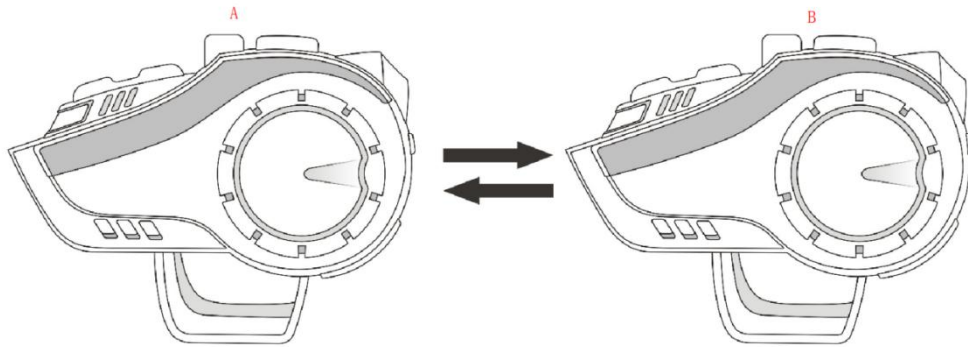
1) **Power on:** simultaneously long press the two Bluetooth intercom (A, B) on/off Button for 4 seconds to hear the power on tone, blue light slow flashing, complete the power on, enter standby mode.

2) **Intercom pairing:** in standby mode, press and hold the BT Button of both AB intercoms for 4 seconds, until the light turns blue and flashes, enter intercom pairing mode.

3) **Intercom connection:** short press the **BT Button** of A intercom, hear the 'intercom search' tone, it enters the search pairing mode; A search to B after the two devices blue light will slow flashing, while hearing a beep, 1 second after B blue light continues to flash fast into the intercom search for the next device, wait for the blue light flashing fast to slow flashing (stop searching for the third device), short press the **BT Button** of A to send a command to start the network, hear a beep network success. Press the **BT Button** again to start voice intercom, pairing successfully.

(When the B device is searching for the third unit (B blue light is flashing fast), you can press A's BT Button to interrupt B's search for the

next device, but B cannot interrupt its own search).



Attention.

a) Two helmet Bluetooth headset in the intercom pairing success, without repeated pairing, while the power on, in standby mode (blue light slow flashing) press the **BT Button** once to enter the intercom.

b) Pairing successful intercom, while pressing the [multi-function key] + **on/off button** to enter the Bluetooth search to pair cell phone Bluetooth, complete the cell phone Bluetooth connection, restore intercom need to press the **BT Button** of any one device twice.

c) In the intercom process, environmental factors inevitably disconnected, disconnected within 10 minutes with automatic back to connect, such as beyond the automatic back to connect time, you can manually short press the **BT Button** once to manually connect.

d) If you need to terminate the intercom in the process, you can press **BT Button** to hang up or connect back.

2、 Multi-bluetooth intercoms group intercom with one key

Placing multiple Bluetooth intercoms within 1 meter of each other.

Pairing steps (to 4 groups of intercom for example):

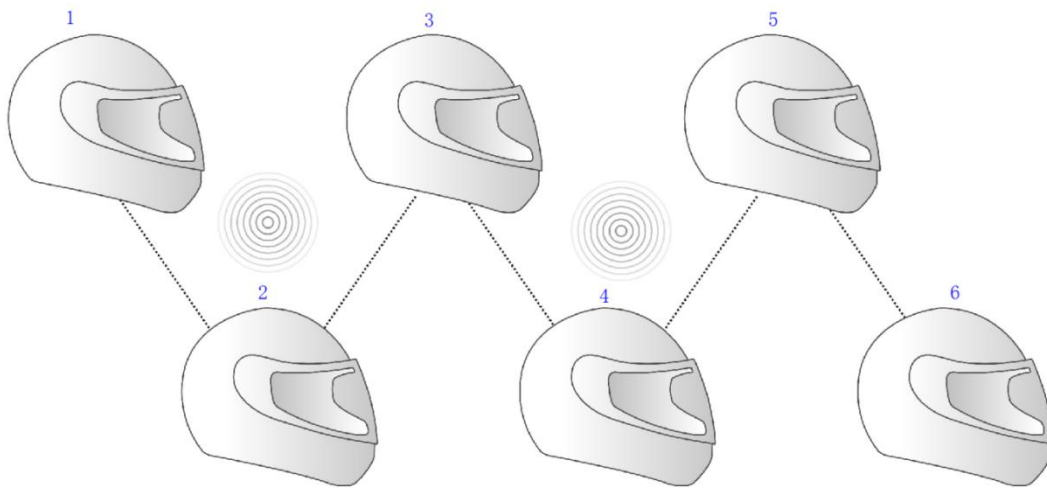
1) **Power on:** press and hold the on/off button for 4 seconds to hear the power-on tone, the blue light flashes slowly, enter standby mode and complete the power-on.

2) **Intercom pairing:** all intercoms in the power-on state in 10 seconds while long press the **BT Button** for 4 seconds into the blue light flashing fast.

3) **Intercom connection:** short press one of the intercom **BT Button** (this device is automatically defined as **No. 1**), **No. 1** machine into automatic pairing mode; when connected to another intercom (automatically become **No. 2**), **No. 1** , **No. 2** machine blue light at the same time slow flashing indicates a successful connection; 1 second

later **No. 2** machine blue light continues to flash fast, enter the search for the next intercom, when connected to the third intercom (**No. 3**), **No. 2** When the third intercom (**No. 3**) is connected, the blue light of **No. 2** and **No. 3** flashes slowly at the same time to indicate successful connection; after 1 second, the blue light of **No. 3** flashes fast to enter the search for **No. 4**, and the network is formed automatically in turn. When all the intercom pairing success, are into the slow flashing, equipment pairing success.

4) **Enter group intercom:** All devices press **BT Button** once at the same time (No.1 machine operates first) to form a loop group network; finally, you also need to press **BT Button** once again for all devices to initiate a group intercom command to start intercom and complete a key group network.



Note: After the group intercom network is completed, short press the on/off button, it will report "This equipment is Unit * ".

3、 Multiplayer manual group network:

Random pairing exists for one-click networking, and manual multi-population networking is available if manual sorting is required.

1) In the case of a four-person pair, all devices enter standby mode with a slow flashing blue light after powering on.

2) Designate the Bluetooth intercoms that need to be connected in order, simultaneously long press the **BT Button** of No. 1 and No. 2 to enter the intercom pairing mode, blue flashing, short press the **BT Button** of No. 1 for Bluetooth search, wait for the automatic completion of pairing, simultaneously long press the **BT Button** of No. 2 and No. 3 to enter the intercom pairing mode, short press the **BT Button** of No. 2

for Bluetooth search, after the completion of pairing, simultaneously long press the **BT Button** of No. 3 and No. 4 to enter the intercom pairing mode, short press the **BT Button** of No. 3 for Bluetooth search, after the completion of pairing **BT Button** to enter the pairing mode, short press the **BT Button** of No. 3 for Bluetooth search, complete the pairing is completed, the blue light flashes slowly, all hosts press the **BT Button** to enter the loop networking, and finally, it is necessary to press the **BT Button** of all devices again to initiate the group intercom command to start intercom and complete the multiplayer manual networking.

Attention

a) After successful pairing of group intercom, there is no need for repeated pairing, while in standby mode after power on (blue light flashes slowly), all devices automatically resume group intercom by pressing the BT button once at the same time.

b) Pairing intercom success, while pressing the [multi-function key] + On/Off button to enter the Bluetooth search can be directly paired with the cell phone Bluetooth, complete the cell phone Bluetooth connection, at this time to resume intercom need to press the BT button twice.

c) Short press the On/Off button and it will announce "This equipment is Unit *".

End/restart.

Group intercom ends, double click BT button to hang up the intercom, press On/Off button to turn off the phone.

In the intercom process, environmental factors inevitably disconnected, disconnected within 10 minutes there is an automatic back to connect the function, such as beyond the automatic back to connect the time, you can manually short press the BT button once for manual connection;

Each time the group intercom network, it is recommended to restore the factory settings for each machine before pairing. Clear method: In the power on state Press and hold the M button + On/Off button for 6 seconds at the same time.

Due to the use of different environments, external interference, multi-crowd intercom optimal use of the number of people for the best four people, environmental interference factors, it is

recommended that within 1000 meters group intercom use better, too long to pull away from the use of various interference inevitably increased, will affect the sense of customer experience.

Switching between modes (for two-person intercom use)

①

Switching between two-person intercom mode/music mode/ FM radio mode.

When in two-person intercom mode, you can disconnect the intercom by pressing BT button, exit to standby mode, and then FM radio/cell phone music playback.

②

When in music mode/FM radio mode, short press the BT button to switch directly to two-person intercom mode.

③

When the intercom is in the intercom, if the intercom is also connected to the state of the cell phone, when a call comes in, the intercom will automatically disconnect, switch to answer the call, and automatically resume the intercom after the end of the call; it takes about 5 seconds to automatically switch back to the intercom state from the cell phone call state.

Note:

When three or more people talk to each other in a group, listening to songs/FM radio operation is not available, but answering incoming calls or end-code callback function exists.

Pairing with third-party helmet Bluetooth headsets

This pairing function only supports the use between two different brand models by placing the two helmet Bluetooth intercoms within a distance of 1 meter from each other.

Matching steps:

a) **Power on:** long press HY-02 Bluetooth intercom on/off button for 4 seconds to hear the power on tone, the blue light flashes slowly and enters standby mode.

b) **Intercom pairing:** in standby mode, while long press HY-02 [multi-function key] and switch key for 4 seconds, until the indicator becomes red and blue lights alternately flashing, the other headset also

entered the pairing mode, red and blue lights alternately flashing, at this time, while short press HY-02 [multi-function key] and switch key, hear the beep Bluetooth dating mode, waiting to connect.

c) **Intercom connection:** hear the beep, the red and blue lights of the two machines alternately flashing into a blue light slow flash indicates a successful connection, and then press the BT button HY-02, prompting the intercom has been connected, enter the voice intercom.

Music sharing (two Bluetooth intercoms)

Sharing opens:

To restore the factory settings of two devices, music sharing must be done by the machine that initiates the intercom in order to share to the other party, such as specifying device A to share device B, then the operation steps are as follows.

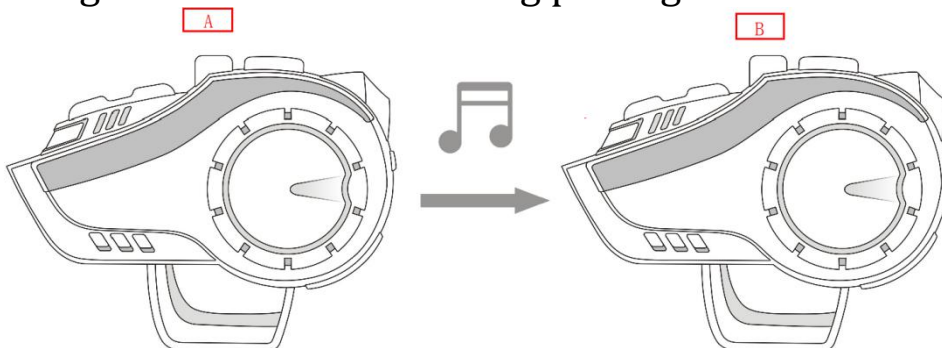
1、pairing AB two intercom pairing, **need A search B**, operation method reference two people pairing intercom method.

2、After successful pairing, A connects the Bluetooth of cell phone, short press BT button, then music playback, long press [multi-function key] for 2 seconds to enter music sharing pairing, blue light flashes quickly; host B hears the beep of music sharing, sharing successfully.

Share Close:

During the music sharing process, press and hold the [multi-function key] of A or B at any time, the music sharing will end.

Turning off the intercom will automatically turn off intercom pairing and clear music sharing pairing.



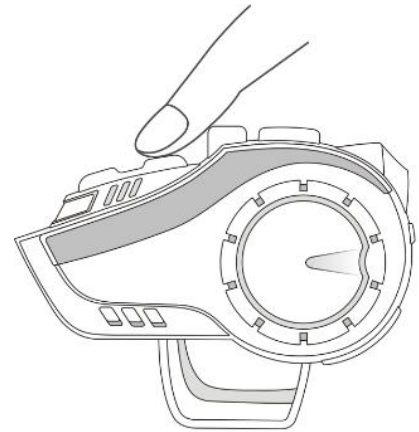
Attention

If two devices share successfully and close music sharing normally, and want to re-share music (without operating shutdown), you can long press A's [multi-function key] in listening state, and B's blue light will automatically flash fast to enter sharing; if you close music sharing

for the second time and want to re-enter sharing again, you need to press A's **BT button** once, then long press A's [multi-function key], and B's blue light will automatically flash fast to enter sharing.

Switching EQ audio mode

In the process of playing music, click the **M button**, you can EQ audio mode conversion, the device has a total of five modes: "Pop", "Rock", "Jazz", "Classic" and "Country" rotating selection, shutdown to save the memory of the current EQ mode.



Voice wake up operation

In standby mode Press and hold the M button for 4 seconds to enter the voice wakeup function.

You can also wake up directly with a call (requires phone settings to be turned on).

Restore factory settings

In the power on state, long press the On/Off button + M button for 6 seconds until the red light comes on to complete the power off and clear the memory.

Battery level broadcast

In standby mode, press and hold the M button for 6 seconds to voice announce the power level (battery power is divided into three levels).

Function priority

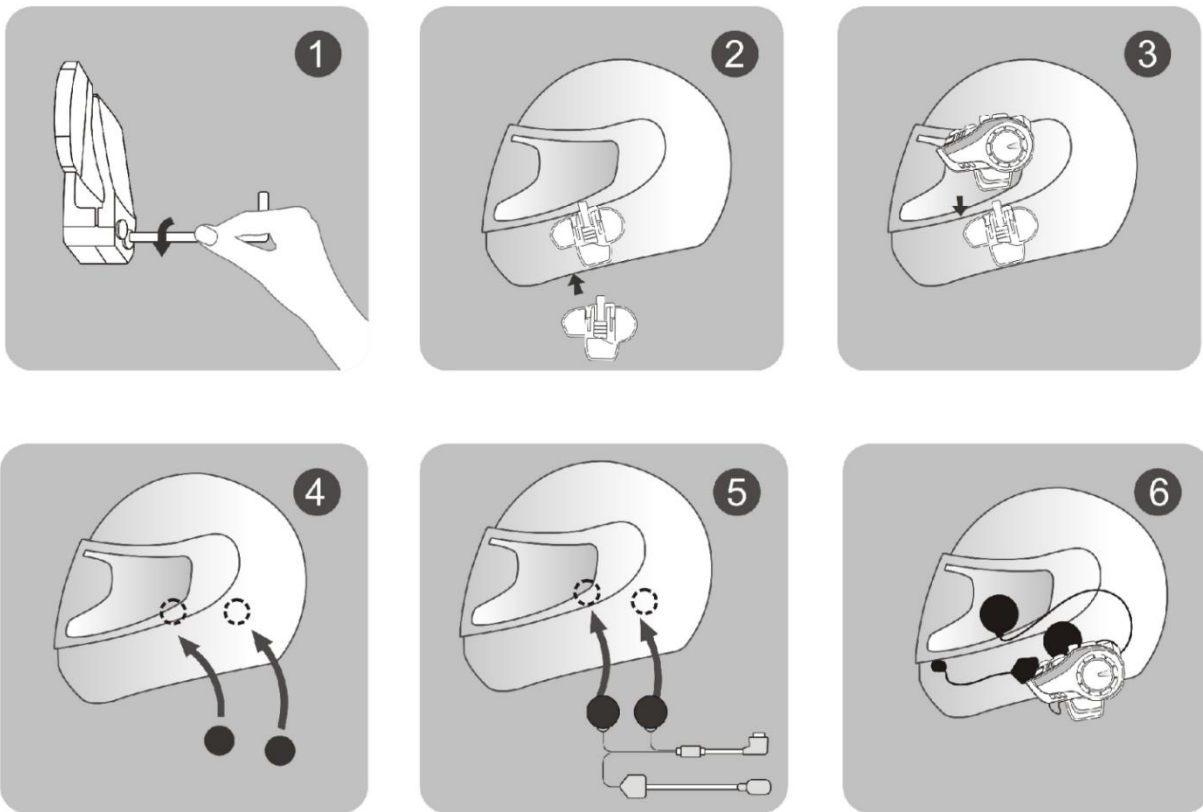
Level 1: Phone

Level 2: Bluetooth Intercom

Level 3: Music/FM radio

Intercom equipment installation method (two options)

option one: How to install with plastic clamp



① Use the included screwdriver to loosen the screws on the back clip and allow the clip to open to the proper level for easy insertion into the lower edge of the helmet.

② Open the helmet liner, insert the clip into the proper position on the left side of the helmet and tighten the screw (too tight can also damage the clip or the helmet)

③ Slide the Bluetooth intercom into the headset clip slot and make sure it locks securely.

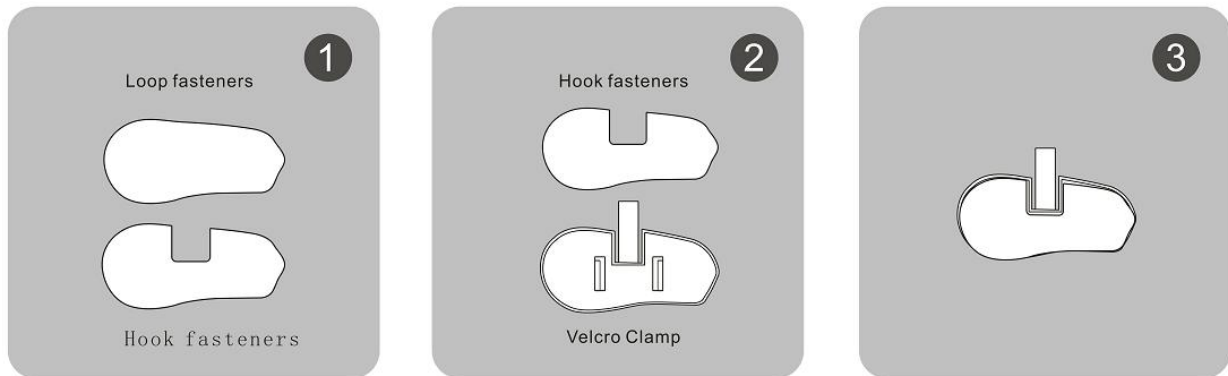
④ Open the helmet liner (ear position), clean the helmet EPS surface, and paste a piece of speaker Velcro on each side (need to install close to the helmet ear position to achieve the best volume and sound).

⑤ Paste the speaker on the surface of the fixed Velcro (the speaker comes with a Velcro hook surface, the speaker with a short line should be installed close to the host side), while fixing the microphone, and properly organize the helmet liner and headphone cable.

⑥ Insert the headset plug into the headset jack of the intercom, bundle the headset cable and complete the installation.

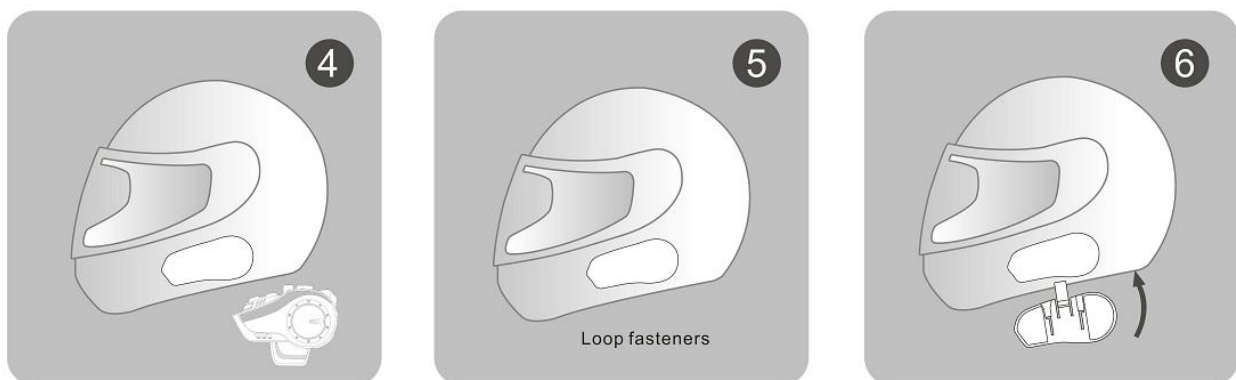
option two: Intercom installation using Velcro

You can mount the intercom directly to the edge of the helmet using Velcro. Please see the pictures below.



① Separate the hook side of the Velcro and the gross side, first paste the hook side to the Velcro clip, then insert the Velcro clip into the host, handheld intercom, choose the appropriate installation position on the helmet (note that the machine is facing the correct direction), after the selected position, paste the gross side of the Velcro to the position.

② Remove the Velcro clip from the intercom (already attached to the Velcro hook side), use the hook side to align the Velcro gross side of the sticker and make sure it is firmly attached.

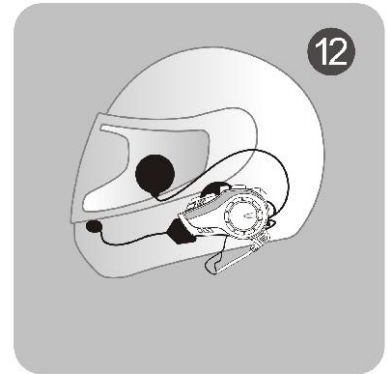
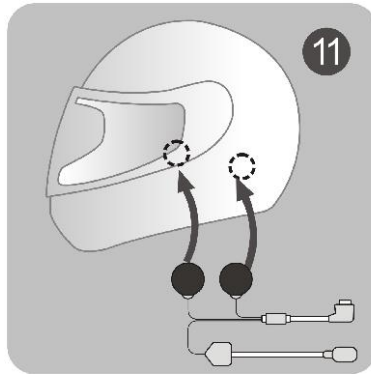
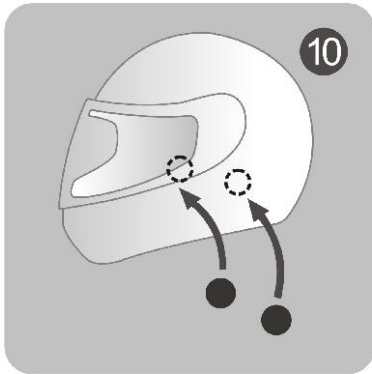
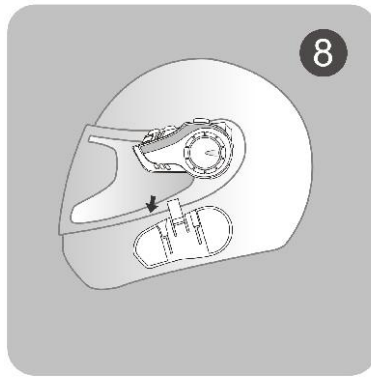
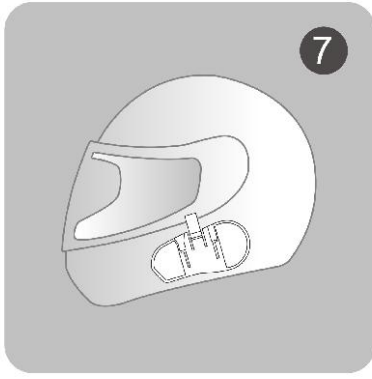


③ Slide the intercom into the slot of the Velcro clip, snap it in place and lock it.

④ Open the helmet liner (ear position), clean the helmet EPS surface, and paste a piece of horn Velcro on each side (please install close to the ear position to achieve the best volume sound).

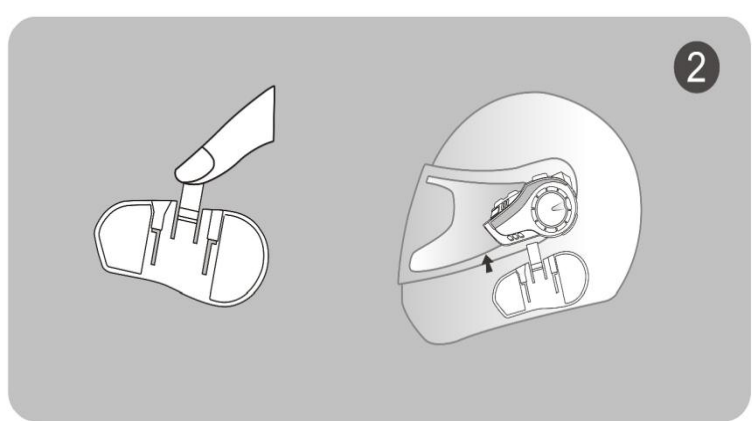
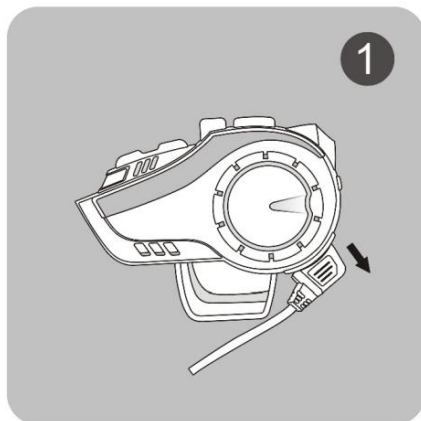
⑤ Paste the horn to the surface of the fixed Velcro (the horn comes with a Velcro hook surface, and the horn with a short line should be installed close to the host side), while fixing the microphone, and finishing the helmet liner with the headphone cable.

⑥ Insert the headset plug into the headset jack of the intercom, bundle the headset cable and complete the installation.

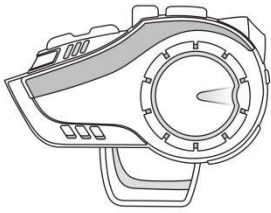


Quickly remove the Bluetooth intercom from the helmet

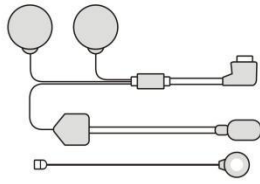
First unplug the headset cable, and then a finger press the middle of the back clip fixed snap (push to the side of the helmet), so that the back clip snap hook and Bluetooth intercom disengage, while pushing up the intercom, so that it smoothly slide out of the back clip, complete the disassembly.



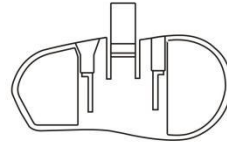
HY-02 List of items



Bluetooth Device



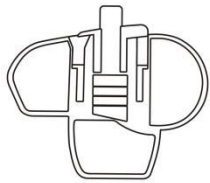
Microphone&headset



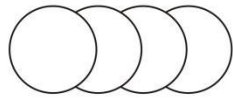
Velcro Clamp



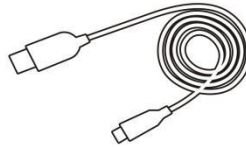
Hook and loop fasteners



Clamp



Headphone Velcro



USB Cable



Screw Driver



Manual

1. **Bluetooth Device x1**

6. **Headphone Velcro x4**

2. **Microphone&headset x 1**

7. **USB Cable x 1**

3. **Velcro Clamp x 1**

8. **Screw Driver x1**

4. **Hook and loop fasteners x2**

9. **Manual x 1**

5. **Clamp x 1**

Battery and charging instructions

1) Before using the Bluetooth intercom, please use the original charging cable to charge the intercom, the small TYPE-C connector on the charging cable connects to the USB charging port of the Bluetooth intercom, and the large USB on the charging cable connects to the following charging port for power supply:

A, the USB port of the computer.

B. A mobile power supply whose output is DC 5V.

C. USB power adapter whose output is DC 5V.

2) When charging, the red LED is always on, and when fully charged, the red light slowly goes out. It takes about 2 hours from low battery to full charge.

Product technical parameters

Working distance: 1000m for two people, 2000m for group intercom (under ideal environment)

Working frequency: 2.4GHz

Bluetooth version: Bluetooth 5.0

Support Bluetooth protocol: A2DP and AVRCP

Operating range: up to 10 meters for cell phones

Battery type: 900mAh rechargeable lithium polymer

Standby time: up to 500 hours

Talk time: up to 28 hours for cell phone calls/intercom; up to 33 hours for music

Charging time: about 2 hours

Power adapter: DC 5V 1A (optional)

Charging interface: TYPE-C interface

Operating temperature: 41F-104F (5°C-40°C)

Storage temperature: -4F-122F (-20°C~50°C)

Cautions

① Not connected to any device when the intercom 30 minutes automatically shut down, if up to a month or more without Bluetooth intercom, in order to protect the intercom lithium battery, please charge the headset once every two months.

② The applicable storage temperature of this product is -20°C to 50°C, please do not store in an environment where the temperature is too high or too low, otherwise it will affect the service life of the product.

③ Do not expose the product to open flame to avoid explosion.

④ Bluetooth intercom are not open, so as not to short-circuit the motherboard or battery damage, affecting normal use, must pay attention.

⑤ **USB emergency shutdown: Bluetooth intercom in the work of any mode state if directly inserted into the USB charging will emergency shutdown, USB emergency shutdown will not save the recorded data, it is recommended that users do not use in non-emergency situations.**



FC CE ~~RoHS~~ ♻️ ~~WEEE~~

Made In China