

# Instructions

## Where to get the app:

Please search "scent marketing" in Google play or App store and you will find it.



→ Add device

8150D

8150D

This device does not have this function.

Delete working period  
Slide left to delete working period for IOS

Input password

登录

Device Setting

Amend device name

Remarks: location

Add working period

Time switch

(PS: There are 5 working periods available to be set.)

## Amend password

Change your password

Reset

Change your password

Reset

If you forget the password, please press the reset button to restore the factory settings. The factory settings password is 8888.

Working period setting

Slide up and down to adjust

Select the day

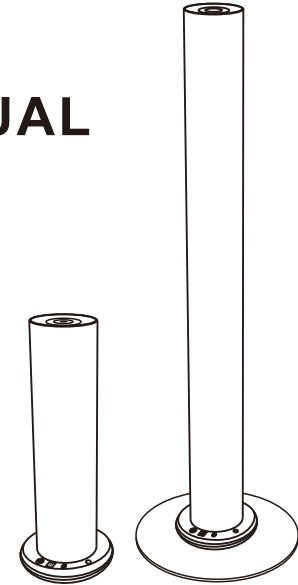
Select grade

Work Time(S)	Stop Time(S)
14	24
15	25
16	26

After adjusting grade, please save it BEFORE going back to the home page.

# PRODUCT MANUAL

## SCENT MARKETING



## Operations

### Power on

Connect with 12V 1A power supply, there is "beep" voice coming out.

### Power off

Press to turn off the machine

### Intensity setting

The machine has 10 intensity levels, press to increase the intensity, press to decrease the intensity.

### Power indicator

indicating the direction of the power supply.

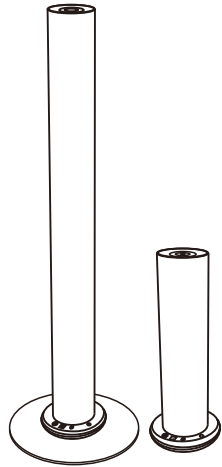
### Reset Bluetooth App password

press and hold for 3 seconds to reset password to 8888.

## Intensity and oil consumption

Grade	working(s)	stop(s)	Consume(ml/h)
G1	30s	270s	0.07
G2	60s	240s	0.13
G3	90s	210s	0.20
G4	120s	180s	0.27
G5	150s	150s	0.33
G6	180s	120s	0.40
G7	210s	90s	0.47
G8	240s	60s	0.53
G9	270s	30s	0.60
G10	Customized	Customized	

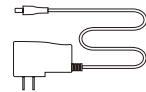
## SPECIFICATION



- 【 Model        】 : SE8150D / SE8150A
- 【 Dimension  】 : 112\*112\*288mm / 180\*180\*925mm
- 【 Bottle capacity  】 : 120ml
- 【 Weight        】 : 1.4kg / 3.03kg
- 【 Coverage     】 : 200m<sup>3</sup>
- 【 Power         】 : 5W
- 【 Voltage       】 : DC12V



Bottle



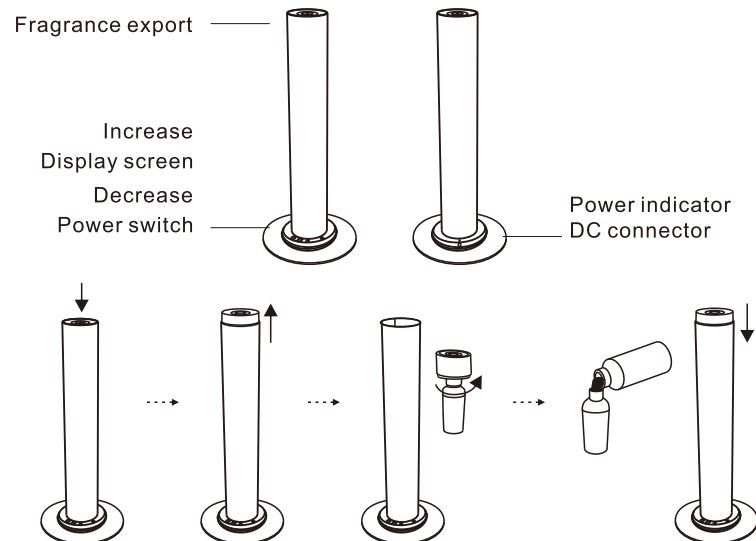
Power adapter



Manual

Checking and make sure the packaging is complete when you first open it, if any problem please contact with us soon.

## Installation

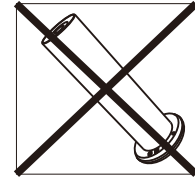
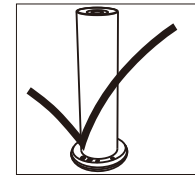


1. Press on the top cover to open the machine.
2. Take out the top cover with diffusion head and bottle.
3. Unscrew the bottle.
4. Fill the bottle with fragrance.

## Warning

1. After installation, please keep the machine vertical. Tilted or angled may cause oil overflow, which will contaminated equipment circuit, affecting the normal use and unnecessary waste.

2. If you are not a technician, you must not modify, disassemble or repair the machine. If the machine malfunctions, please contact our technical personnel.



## EQUIPMENT CLEANING

**The machine needs to be cleaned when below situations happen:**

1. You're about to change to another essential oil;
2. The atomization volume becomes weak .

**Cleaning steps:**

1. Find a clean bottle and fill it with industrial alcohol.
2. Install this bottle to the machine and turn the machine on. Let it work for 5-10 minutes.
3. Turn off the electric, finish the cleaning.

## TROUBLE SHOOTING

Before asking to have the machine repaired please try to disgnose the problem first following to below instructions.

Problem	Solution
No diffusion	- Check if the power is ON or OFF. - The pump is damaged and needs replacing. - If there is no diffusion or it is weak, replace the oil with rubbing alcohol and run it through the machine for 5 minutes.
Little or no spray coming out	- Atomization head is blocked. Clean diffuser by running rubbing alcohol through it. Or replace diffuser core. - Diffuser core with straw is missing or damaged. Replace with a new one. - Pump is damaged and may need replacing.
Diffuser spraying liquid	- Diffuser core is damaged. Replace diffuser core. - Machine is tilted or angled. Make sure it's upright at all times.
Oil leaking	- Bottle is loose. Screw it in properly and straight. - Seal is broken or missing. Replace the supplied seal that came with the machine.
Abnormal sound	- Pump is loose or damaged. Tighten the pump or replace.
No display on screen	- Make sure the power is ON. - Check the plug for damage. Try another outlet. If plug is damaged replace. - Display screen is damaged. Replace.