

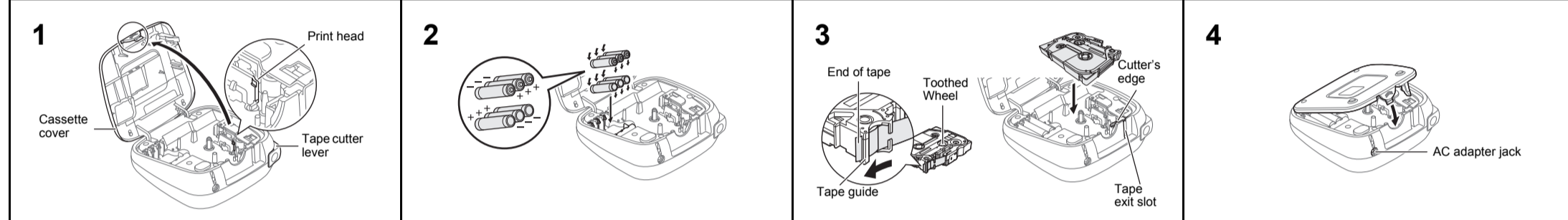
With your PT-D200, you can create labels for multiple applications. Select from the many frames, character sizes and styles to design beautiful custom labels. In addition, the variety of tape cartridges available allows you to print labels with different widths and exciting colors.

Read this manual carefully before starting and keep the manual in a handy place for future reference.

Printed in China
LAA723001



Power Supply and Tape Cassette



1 Open the cassette cover by pressing the above indicated area at the top end of the machine.

If a tape cassette is already installed, remove it by pulling it straight up. Also, if batteries are already installed, remove them.

• Make sure that the power is turned off when replacing batteries or tape cassettes.

2 Insert six new AAA alkaline batteries (LR03) or fully charged Ni-MH batteries (HR03), making sure that their poles point in the correct directions.

Users of alkaline batteries:
Always replace all six batteries at the same time with brand new ones.

Users of Ni-MH batteries:
Always replace all six batteries at the same time with fully charged ones.

NOTE
Visit us at <http://solutions.brother.com/> for the latest information about the recommended batteries.

3 Insert a tape cassette, making sure that it snaps into place.

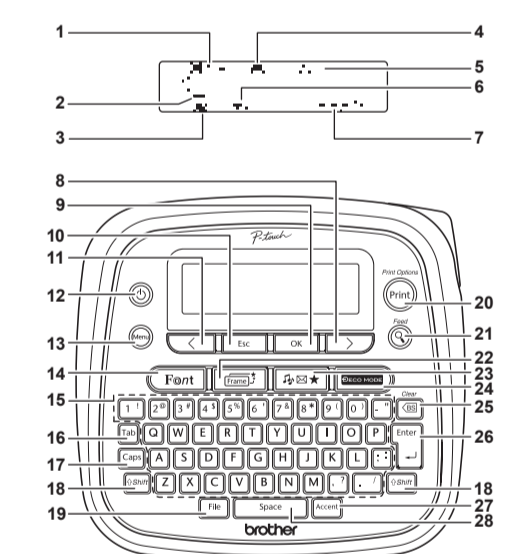
• Make sure that the end of the tape feeds under the tape guides.

• Use only Brother TZe tapes with this machine.

4 Securely close the cassette cover, making sure that it snaps into place.

NOTE
When using optional AC adapter (AD-24ES)
1. Insert the plug on the adapter cord into the AC adapter jack on the top end of the machine.
2. Insert the plug into the nearest standard electrical outlet. For memory back up, we recommend using AAA alkaline batteries (LR03) or Ni-MH batteries (HR03) together when using the AC adapter.

LCD Display & Keyboard



- 1. Size
- 2. Cursor
- 3. Underline/Frame
- 4. Width
- 5. Style
- 6. Caps
- 7. Label Length
- 8. OK key
- 9. Escape key
- 10. Cursor key - Right (Use with Shift key to go to end of the text.)
- 11. Cursor key - Left (Use with Shift key to go to top of the text.)
- 12. Power key
- 13. Menu key
- 14. Font key
- 15. Character key
- 16. Tab key
- 17. Caps key
- 18. Shift key
- 19. File key
- 20. Print key
- 21. Preview key
- 22. Frame key
- 23. Symbol key
- 24. DECO MODE key
- 25. Backspace key
- 26. Enter key
- 27. Accent key
- 28. Space key

NOTE
• The LCD shows one row of 15 characters; however, the text that you enter can be up to 80 characters in length.
• While selecting the settings, press Space key to go back to the default item.
• The print preview is a generated image of the label, and may differ from the actual label when printed.
• Label length shown on LCD may slightly differ from the actual label length when printed.

Troubleshooting

Message	Cause/Remedy
Error message	
Low Battery	The batteries are weak. If using AAA alkaline batteries: Replace them with new ones. If using Ni-MH batteries: Charge them fully.
Battery Dead	The installed batteries are running low. • There is no text above the cursor when you selected [Numbering]. • Invalid character is selected for [Numbering]. • Invalid number is selected for [Tab Length] or [Label Length]. • An invalid value was entered as the label length when using the DECO MODE or Name Label function.
Invalid!	• You tried to print a text file when there is no data stored in the memory. • [Print] is pressed when no text is entered. • You tried to select [Numbering], [Mirror], or Text Preview when no text is entered. • [OK] or [Print] was pressed when no text was entered while using the DECO MODE or Name Label function.
No Text!	• You tried to enter a 3rd line by pressing [Enter]. • You tried to print or preview two lines of text while 0.13" (3.5mm) or 0.23" (6 mm) tape is installed. Install tape of a larger size.

Message	Cause/Remedy
No Cassette!	You tried to print a label when there is no cassette installed.
Cutter Error	Tape cutter lever is used in the middle of printing process. The maximum number of characters (80 characters, 50 characters for DECO MODE or Name Label function) have already been entered.
Text Full!	With the DECO MODE or Name Label function: Since the number of entered characters exceeds the label length, reduce the text. All other functions: Since the number of entered characters exceeds the label length, reduce the text, or select (Auto) as the label length.
Text Limit!	Printing on 0.13" (3.5mm) tape with invalid Frame setting ON. (Select [Esc] to cancel.)
No Frame OK?	Feeding tape after printing when [Chain Print] is selected. Refer to "Setting Margin".
OK to Feed?	Only 0.47"(12mm) tape cassette is available for DECO MODE or Name Label function.
Insert 0.47"	Use a tape cassette with the TZe mark.
Wrong Tape!	

What to do when...	Solution
Problem The display stays blank after you have turned on the machine.	• Check that the batteries are correctly inserted. • If the batteries are weak, replace them. • Check that the AD-24ES adapter is correctly connected.
Problem When the label is printed out, there is too much margin (space) on both sides of the text.	• See "Setting Margin" in this user's guide and select [Half] or [Narrow] to have smaller margins for your label.
Problem The machine does not print, or the printed characters are not formed properly.	• Check that the tape cassette has been inserted correctly. • If the tape cassette is empty, replace it. • Check the cassette cover is properly closed.
Problem The setting has cleared on its own.	• The batteries may be weak. Replace them. • When power is disconnected for more than three minutes, all text & formats in the display will be lost. Language and Unit settings will also be cleared.
Problem A blank horizontal line appears through the printed label.	• There maybe some dust on the print head. Remove the tape cassette and use a dry cotton swab to gently wipe the print head with an up-and-down motion.

Problem	Solution
Problem The machine has "locked up" (i.e., nothing happens when a key is pressed, even though the machine is on.)	• Refer to "Resetting the P-touch".
Problem The power turns off when you try to print.	• The batteries may be weak. Replace them. • Check that the batteries are correctly inserted. • A wrong adapter is used; the recommended adapter is the AD-24ES.
Problem The tape does not feed properly or the tape gets stuck inside the machine.	• Check that the end of the tape feeds under the tape guides. • The cutter lever is used while printing. Do not touch the cutter lever during printing.
Problem All text and format settings need to be cleared to create a new label.	• Press [Shift] + [Esc] and select [Text&Format].
Problem To change language setting.	• Refer to "Initial Settings".

CAUTION

Indicates a potentially hazardous situation which, if not avoided, may result in minor or moderate injuries.

WARNING Indicates a potentially hazardous situation which, if not avoided, could result in death or serious injuries.

Follow these guidelines to avoid the risk of fire, burns, injury, electric shocks, rupture, overheating, abnormal odours or smoke.

- Always use the specified voltage and the suggested AC adapter (AD-24ES) for the P-touch labeler to prevent any damage or failure.
- Do not touch the P-touch labeler during a lightning storm.
- Do not use the P-touch labeler/AC adapter in places of high humidity such as bathrooms.
- Do not overload the power cord.
- Do not place heavy objects on, or damage the power cord or plug. Do not forcibly bend or pull the power cord. Always hold the AC adapter when disconnecting from the power outlet.
- Make sure that the plug is fully inserted to the power outlet. Do not use an outlet that is loose.
- Do not allow the P-touch labeler/AC adapter/power plug/batteries to get wet, for example, by handing them with wet hands or spilling beverages on to them.
- Since loss of eyesight may result when leaked fluid from batteries gets into your eyes, immediately rinse your eyes with a large amount of clean water, and then seek medical attention.
- Do not disassemble or modify the P-touch labeler/AC adapter/batteries.
- Do not allow a metal object to contact both the plus and minus ends of a battery.
- Do not use sharp objects, such as tweezers or a metallic pen, to change the batteries.
- Do not throw the batteries into fire or expose to heat.
- Disconnect the AC adapter and remove batteries immediately and stop using the P-touch labeler if you notice abnormal odor, heat, discoloration, deformation or anything unusual while using or storing it.
- Do not use damaged or leaking batteries as the fluid may get on your hands.
- Do not use a deformed or leaking battery or one whose label is damaged. There is a possibility of generating heat.

General Precautions

Depending on the location, material, and environmental conditions, the label may unpeel or become irremovable, the color of the label may change or be transferred to other objects. Before applying the label, check the environmental conditions and on, the user is encouraged to try to correct the interference by one or more of the following measures:

- Reorient or relocate the receiving antenna.
- Increase the separation between the equipment and receiver.
- Connect the equipment into an outlet on a circuit different from that to which the receiver is connected.
- Consult the dealer or an experienced radio/TV technician for help.

Important
• Changes or modifications not expressly approved by Brother Industries, Ltd. could void the user's authority to operate the equipment.

FCC NOTICE

This device complies with Part 15 of the FCC Rules. Operation is subject to the following two conditions: (1) This device may not cause harmful interference, and (2) this device must accept any interference received, including interference that may cause undesired operation.

This equipment has been tested and found to comply with the limits for a Class B digital device, pursuant to Part 15 of the FCC Rules. These limits are designed to provide reasonable protection against harmful interference in a residential installation. This equipment generates, uses, and can radiate radio frequency energy and, if not installed and used in accordance with the instructions, may cause harmful interference to radio communications. However, there is no guarantee that interference will not occur in a particular installation. If this equipment does cause harmful interference to radio or television reception, which can be determined by turning the equipment off and on, the user is encouraged to try to correct the interference by one or more of the following measures:

- Reorient or relocate the receiving antenna.
- Increase the separation between the equipment and receiver.
- Connect the equipment into an outlet on a circuit different from that to which the receiver is connected.
- Consult the dealer or an experienced radio/TV technician for help.

Important
• Changes or modifications not expressly approved by Brother Industries, Ltd. could void the user's authority to operate the equipment.

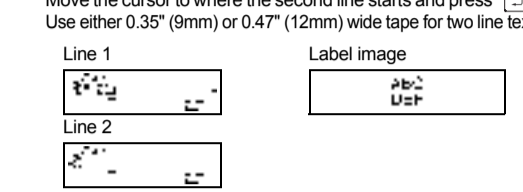
BASIC USAGE

Entering Text

Switching Upper Case/Lower Case

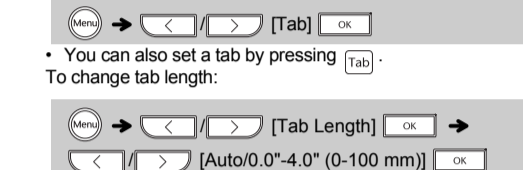


Making Two Lines of Text



NOTE
• The return symbol (↵) will be displayed when the Enter key is pressed.

Entering Tab



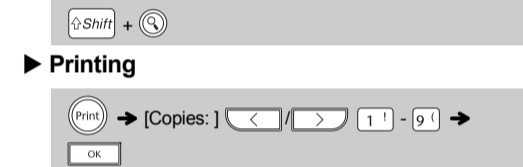
Printing Labels

Preview

You can preview the text before printing.

- The print preview is a generated image of the label, and may differ from the actual label when printed.
- When the LCD doesn't display all the text at a time, press [F1] to display the hidden text.

Feeding (Tape Feed)

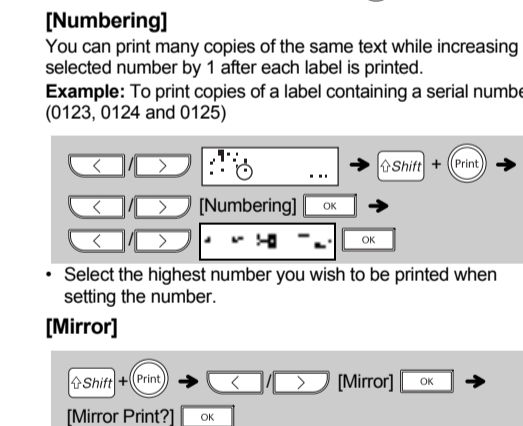


Printing

1. Insert the plug on the adapter cord into the AC adapter jack on the top end of the machine.
2. Insert the plug into the nearest standard electrical outlet. For memory back up, we recommend using AAA alkaline batteries (LR03) or Ni-MH batteries (HR03) together when using the AC adapter.

• If you need only 1 copy of the label, press [OK] without selecting the number of copies.
• The number of copies can also be specified by pressing a number key.
• To prevent damage to the tape, do not touch the cutter lever while the message "Printing..." or "Feeding..." is displayed.
• To cut off the label, push in the tape cutter lever on the upper-right corner of the machine.
• To remove the backing, fold the label lengthwise with the text facing inward, to expose the inside edges of the backing. Peel off the backing one piece at a time and apply.
• You can print up to 9 copies of each label.

Using Print Options



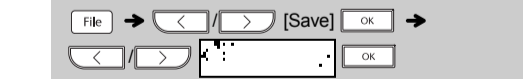
NOTE
• The machine automatically turns off if no keys are pressed within five minutes.
• To cancel any operation, press [Esc].

• Use clear tape in [Mirror], so the labels can be read correctly from the opposite side when attached on glass, windows or other transparent surfaces.

Saving Label Files

You can save up to 30 labels and recall them for printing at a later date. A maximum of 80 characters can be saved per file, a maximum total of 2400 characters for the total memory. You can also edit and overwrite the stored label.

Save



Print



Open



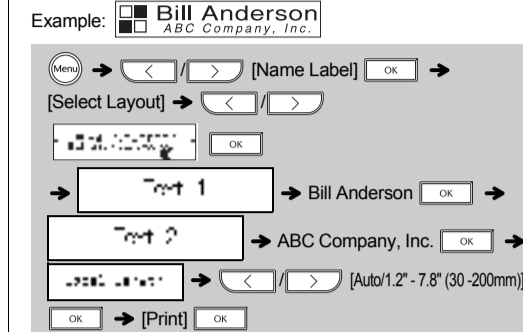
• You can also enter the File menu by pressing [F1] → [4].

NOTE
If you try to store a label when there is already a label stored to that number, a message "Overwrite?" will appear. Press [OK] to save your new label. Press [Esc] to cancel.

USING TEMPLATES

Name Label

This function allows you to create various name labels using the built-in templates. Refer to the Name Label format table (D) on the enclosed insertion sheet.

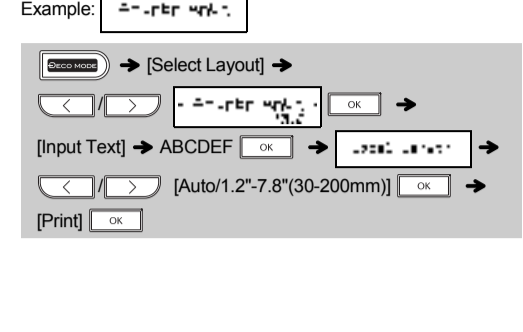


NOTE
• Depending on the format you have selected, the entire contents of your text may not be printed. For example, if you selected a fixed Label Length and the text is too long, an error message "Text Limit!" will appear.
• The templates cannot be edited.
• Only the highlighted symbols on the enclosed insertion sheet can be used in DECO MODE.

• To clear all text, press [Shift] and [Esc], then "Clear?" appears. Press [OK] to clear. Press [Esc] to cancel.
• When [Auto] is selected for "Label Length", the label will automatically adjust to the correct length for printing the text one time.
• Press [Esc] to return to the previous step.

DECO MODE

This function allows you to create unique labels by using built-in templates. Refer to the DECO MODE format table (C) on the enclosed insertion sheet.



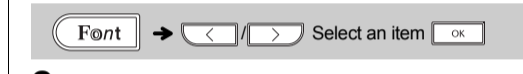
NOTE
• To exit the DECO MODE or Name Label function and return to the text input screen, do one of the following:
a) Press [Esc].
b) Press [Esc] to select [Cancel], and then press [OK] when "Print" appears.

• These features are only available when using 0.47" (12mm) wide tape cassettes.
• The maximum label length is 7.8" (200mm) for DECO MODE and Name Label function.
• When [Auto] is selected for "Label Length", the label will automatically adjust to the correct length for printing the text one time.
• Press [Space] to return to the [Auto] setting for "Label Length" mode.

USEFUL FUNCTION KEYS

Font Key

1 Press [Font] to select the settings to enter the text.



2 Press [Font] to select the settings.

Font	Settings	Preview
A A	Helsetiki	A 1
	Brussels	A 1
	US	A 1
	Florida	A 1
	Belgium	A 1
	San Diego	A 1
	Los Angeles	A 1
	Calgary	A 1
	HEL + Atlanta *	A 1
	HEL + Adams *	A 1
	HEL + Brunel *	A 1
	HEL + Istanbul *	A 1
	HEL + Sofia *	A 1
	HEL + Germany *	A 1
Size	Large	A
	Medium	A
	Small	A
Width	Normal	A
	× 2	A
	× 1/2	A
Style	Normal	A
	Bold	A
	Outline	A
	Shadow	A
	Solid	A
	Italic	A
	H-Bold	A
	H-Outline	A
	H-Shadow	A
	Vertical	A

Symbol Key

Press [Symbol] to select various symbols. Refer to the table of symbols (A) on the enclosed insertion sheet for a list of available symbols.



NOTE
To cancel operations, press [Esc].

Short Cut Keys

Language	Key	Symbol
Space	[Space]	[]
Label Length	[1]	[]
Margin	[2]	[]
Name Label	[3]	[]
File	[4]	[]
Tab	[5]	[]
Tab Length	[6]	[]
Clear	[Esc]	[]
Unit	[7]	[]

Resetting the P-touch

You can reset the P-touch labeler when you want to initialize the settings, or in the event of the P-touch labeler is not working properly.

1 Turn off the P-touch labeler, hold down [Shift] and [R] and then press [Esc] to turn the P-touch back on.

2 Release [Shift] and [R]. The P-touch labeler turns on with the internal memory reset.

NOTE
All text, settings and stored files are cleared.

Should you encounter any problems with your product, please do not return your product to the store! After referring to the User's guide, if you still need assistance, call Brother Customer Service at: Voice: 1-877-BROTHER Web: www.brother-usa.com Fax: 1-901-379-1210 If you need to locate a service center, please call 1-877-BROTHER or visit us at www.brother-usa.com

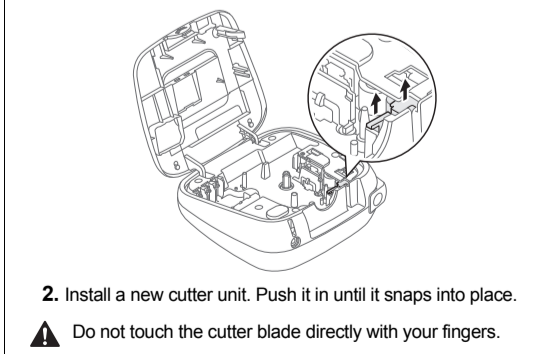
Declaration of Conformity (Europe/Turkey only)
We, BROTHER INDUSTRIES, LTD 15-1, Naeshiro-cho, Mizuho-ku, Nagoya, 467-8561, Japan declare that this product is in compliance with the essential requirements and other relevant provisions of Directives 2004/108/EC and 2009/125/EC. The Adapter AD-24ES is in compliance with the essential requirements and other relevant provisions of Directive 2006/95/EC. The Declaration of Conformity (DoC) is on our Web site. Please go to <http://solutions.brother.com> -> choose region (eg. Europe) -> choose country -> choose your model -> choose "Manuals" -> choose Declaration of Conformity ("Select Language when required).

Frame Key

Press [Frame] to select the frame design. Refer to the frame design table (E) on the enclosed insertion sheet.



NOTE
To cancel operations, press [Esc].



NOTE
Do not touch the cutter blade directly with your fingers.