
www.trust.com

USER MANUAL



Item 71153 Version 1.0
Visit www.trust.com
for the latest instructions

ALED-G2706 WIRELESS DIMMABLE LED SPOT

ALED-2709 WIRELESS DIMMABLE LED SPOT

Read the manual carefully. Failure to follow these instructions can be dangerous. Incorrect installation will void any warranty on this product.

COMPATIBILITY

The LED spot works with all Trust Smart Home startline transmitters

FUNCTIONALITY

ALED-G2706 Wireless Dimmable LED Spot

SMARTPHONE/TABLET FUNCTIONS

By combining this product with the OCTOPUS Control station or ICS-1000, you can also turn the spot ON or OFF via your tablet and / or smartphone. For more information visit trust.com/71110 or trust.com/71080

WIRELESS RADIO SIGNAL

- The 433.92 MHz radio signal passes through walls, windows and doors.
- Indoor 433.92 MHz range: up to 30 m. Outdoor 433.92 MHz range: up to 70 m (optimal conditions).
- The strength depends on local conditions, such as the presence of metals. The metal particles in for example, double glazing (HR glass), can provide a reduction in the range of wireless signals.
- There may be restrictions on the use of this device outside the EU. Check, if applicable, whether this device meets local regulations.

LIFE SUPPORT

Never use Trust Smart Home products for life support systems or other applications where failures can have life-threatening consequences.

INTERFERENCE

Interference can affect the operation of all broadcast transmitter and receivers negatively. The distance between 2 receivers or transmitters should be at least 50 cm.

REPAIRS

Do not try to repair this product yourself. The device contains no serviceable parts for the user.

WATER-RESISTANT

This product is not water-resistant.

CLEANING

Clean this product with a dry cloth. Do not use harsh chemicals, cleaning solvents or strong detergents.

MEMORY

The spot can save up to 6 devices in its memory.

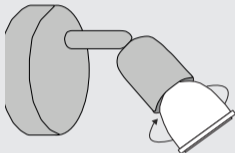
HANDLING

Do not drop the device, bump the device against something or shake it. Rough handling can damage internal circuit boards and fine mechanics.

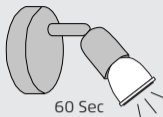
ENVIRONMENT

The product should not be exposed to extreme heat or cold. This can damage the circuit boards and batteries or shorten its life.

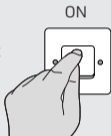
1



2



Traditional 230V light switch



1. Install LED spot

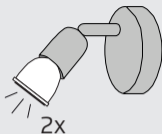
Install the LED spot by screwing it in the GU-10 socket and turn it on using the traditional light switch.

⚠ When no traditional light switch is available. When the spot is screwed in for the first time it will start in pairing mode immediately. For activating the pairing mode after the first time use, see chapter 7 method 2.

2. First use pairing mode

When the LED spot is installed for the first time and turned ON using the traditional light switch it will start in pairing mode. The pairing mode is indicated with a blinking light at a low dim level. This pairing mode lasts for 60 seconds. If no transmitter is paired during this pairing mode, the spot will turn off. The spot will start this pairing mode every time it is turned on and no transmitter is paired.

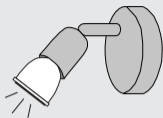
3



3. Pairing transmitter to spot

When the spot is in pairing mode press an ON button on your transmitter to pair it to the spot. The spot will flash 2x brightly to confirm that the pairing was successful and stays on

4

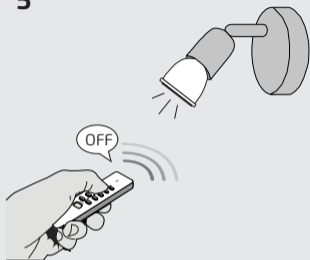


4. Turn spot ON

After pairing the spot with a transmitter, you can turn the spot on by pressing the ON button on the previously paired transmitter. It is also still possible to turn the spot on using the traditional light switch.

⚠ The traditional light switch must be in the ON position for wireless switching.

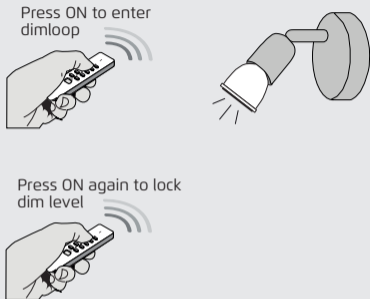
5



5. Turn spot OFF

After pairing the spot with a transmitter, you can turn the spot off by pressing the OFF button on the previously paired transmitter. It is also still possible to turn the spot off using the traditional light switch.

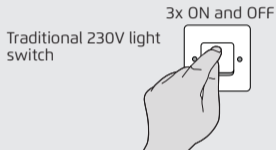
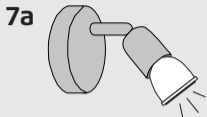
6



6. Dimming

You can control the dim level by pressing the ON button once on the remote when the spot is turned on. The spot will go in a dimloop. When you want to lock the dim level press the ON button again on your transmitter. The spot remembers the channel at which the dim level has been locked. When you turn the spot on using this channel the spot will turn on using the assigned dim level.

⚠ Note: The dim value is remembered per channel or transmitter. The **G** keys of the AYCT-102 cannot be used to activate the dimloop..



7. Pairing mode

There are two methods to activate the pairing mode.

Method 1:

- Make sure the traditional light switch is in the OFF state.

7a. Turn the spot ON and OFF 3x within 15 sec using the light switch of the spot. After the third ON the spot will go into pairing mode.

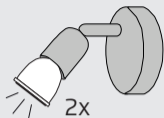
Method 2:(When no traditional light switch is available.)

- Make sure the traditional light switch is in the ON state. Make sure the spot is turned OFF with the paired transmitter.

7b. Turn the spot ON and OFF 5x within 15 sec using the paired transmitter. After the fifth ON the spot will go into pairing mode.

These pairing modes last for 10 seconds. When the pairing mode is finished the spot will turn ON using the dim value which was last used. ⚠️ Note: The **G** keys on the AYCT-102 cannot be used to activate the pairing mode

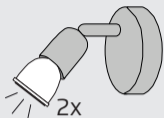
8



8. Pairing transmitter to spot (In this example the AKCT-510)

When the spot is in pairing mode press ON on your transmitter to pair it to the spot. The spot will flash 2x brightly to confirm that the pairing was successful. You can now turn the spot ON and OFF using the transmitter.

9

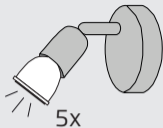


9. Unpairing transmitter

The spot can be unpaired by first putting it in pairing mode. (See step 7a or 7b).

When the spot is in pairing mode give an OFF signal with a paired transmitter to unpair it from the spot. The spot will flash 2x brightly to confirm that the unpairing was successful.

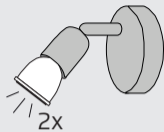
10



10. Memory full

When you try to pair a transmitter to the spot and the memory is full it will give an indication by flashing 5x brightly.

11



11. Clear memory

The memory can be cleared by first putting the spot in pairing mode. (See step 7a or 7b).

When the spot is in pairing mode give 5x an OFF signal within 10 sec on a transmitter to clear the memory. When the memory of the spot has been cleared it will flash 2x at full brightness for confirmation, then the spot will turn off.



If possible, dispose of this product at a recycling center. Do not dispose of this product with the household waste. WEEE: Dispose of the device at a recycling centre. More information: www.trust.com

Warranty

This product is covered by the legal warranty that applies to your country and it begins on the day of purchase. For additional information, visit: www.trust.com/warranty.

Copyright

The contents of the "User manual" are subject to copyright protection. Without prior written permission, reproducing or copying is prohibited. Information in these documents is subject to change without prior notice. Check www.trust.com/71153 for updates.

 For support and FAQ go to trust.com/71153

CE Declaration of conformity

Trust International B.V. declares that the TRUST SMART HOME-product:

model:	ALED-G2706 Wireless Dimmable LED Spot
item number:	71153
intended use:	Indoor

is in compliance with the essential requirements and other relevant provisions of the following directives: EMC Directive (2004/108/EC), Low Voltage Directive (2006/95/EC), ROHS Directive (2011/65/EC), R&TTE Directive (1999/5/EC). The product is compatible with the following norms/standards:

EN 62560	EN 301489-1 V1.9.2:2011
EN 62031	EN 301486-3 V1.6.1:2013
EN 62471	EN 55015
EN 62493	EN 61547
EN 300220-1 V2.4.1:2012	EN 61000-3-2:2014
EN 300220-2 V2.4.1:2012	EN 61000-3-3:2013

Manufacturer/Authorised representative,



H. Donker, Procurement Director

Dordrecht, 14 December 2015

Trust International B.V.
 LAAN VAN BARCELONA 600
 3317DD DORDRECHT
 NETHERLANDS
www.trust.com