

ENGINEERED FOR
XBOX 360®



EARFORCE®
XL*a*

AMPLIFIED STEREO
GAMING HEADSET



User Guide



About the XLa Headset

The Ear Force® XLa is the ideal headset for Xbox 360® gamers seeking a more immersive experience compared to standard Xbox LIVE® communicators. Unlike basic communicator headsets that only let you hear chat in one ear, the XLa combines high-fidelity, amplified game audio and crystal-clear communication in a sleek compact design. The XLa also features independent game and chat volume controls and noise-isolating ear cups, allowing you to personalize the audio and block out distractions. If you're serious about gaming, then get serious about the sound. Step up to the XLa and experience game audio like never before.

Features

Amplified Audio

Enhances game sounds for a more immersive experience.

Bass Boost

Built-in bass boost adds depth and realism to the game audio.

Independent Volume Controls

Allows for personalized balancing of game and chat audio.

Microphone Monitor

Let's you hear what you're saying while gaming.

USB Powered

No batteries required.

Mic Mute

Convenient mic mute switch.

Table of Contents

XLa Headset	pg 1
Xbox 360® Setup	pg 2
Technical Specifications	pg 5
Important Safety Information	pg 6

What's in the Box



XLa Headset



User Guide



Turtle Beach Sticker



watch Turtle Beach product training videos at:
[youtube.com/TurtleBeachVideos](https://www.youtube.com/TurtleBeachVideos)

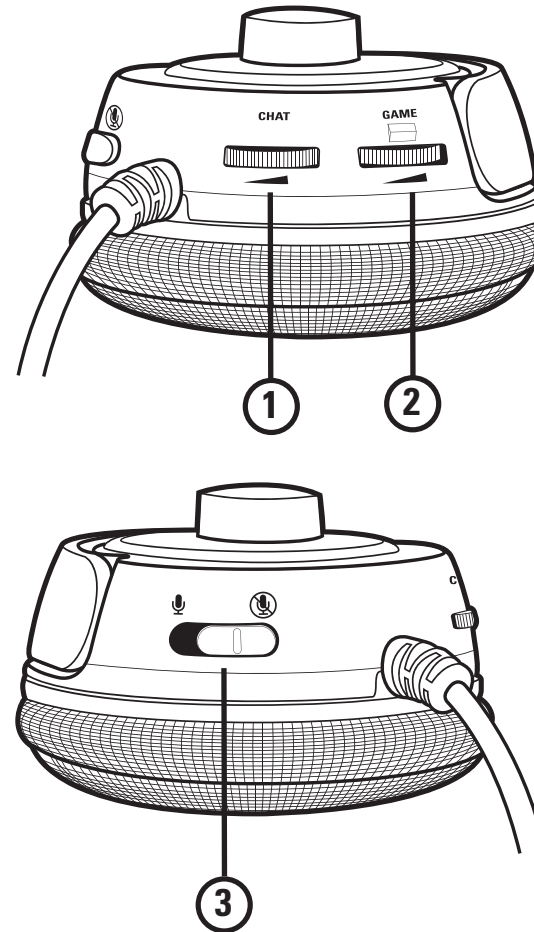
product support and warranty information:
[TurtleBeach.com/support](https://www.TurtleBeach.com/support)

XLa Headset



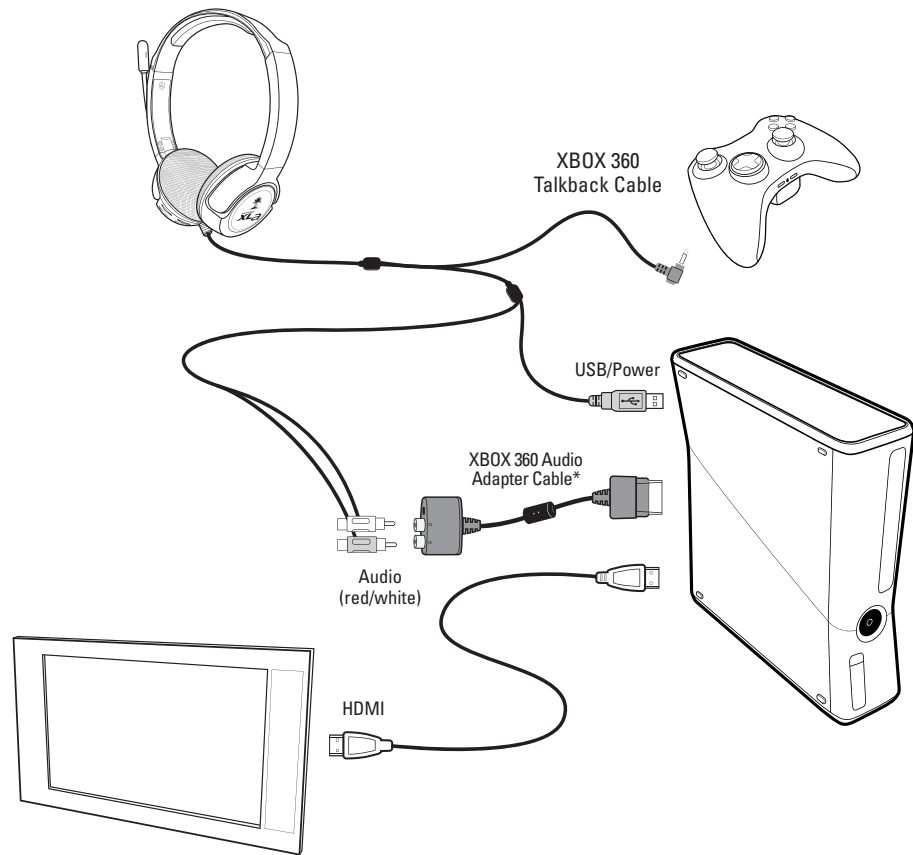
Twist-cup design rests flat on your shoulders

XLa Headset



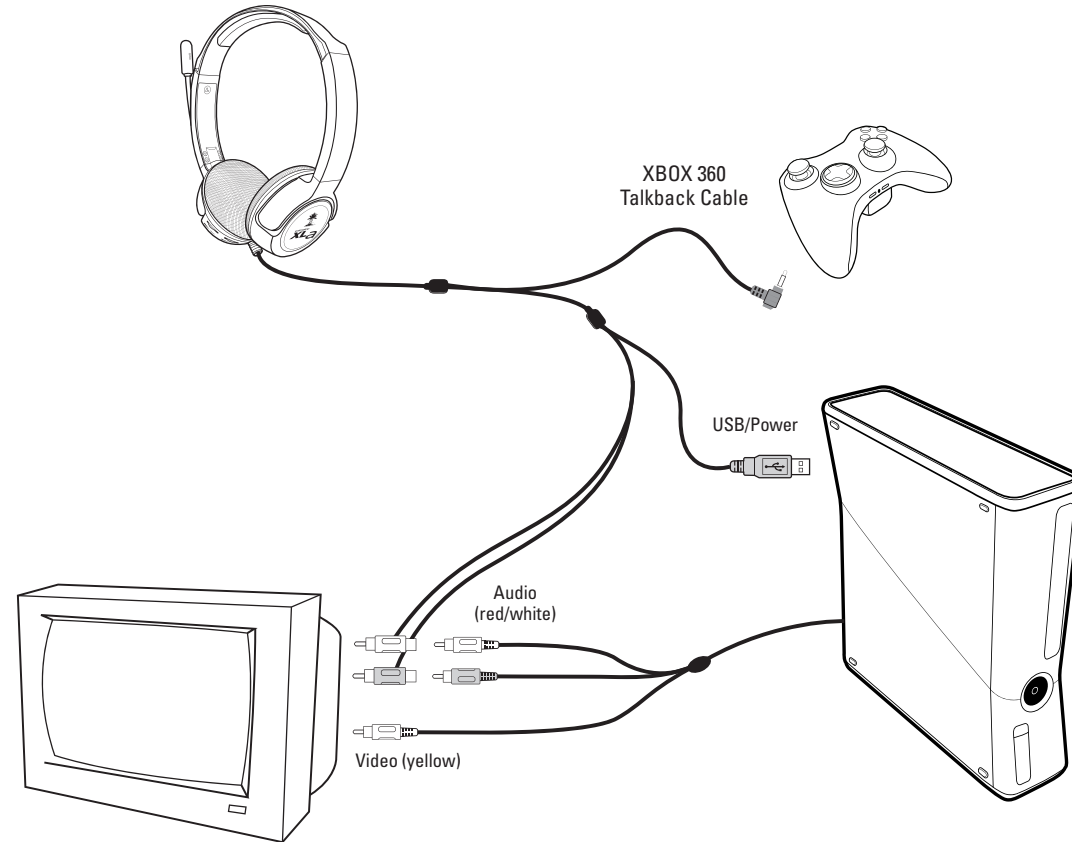
1. **Chat Volume Control:** Adjusts the chat level.
2. **Game Volume:** Adjusts the game level.
3. **Mic Mute Switch:** Turns the mic on or off.

XBOX 360® Setup(HDMI)

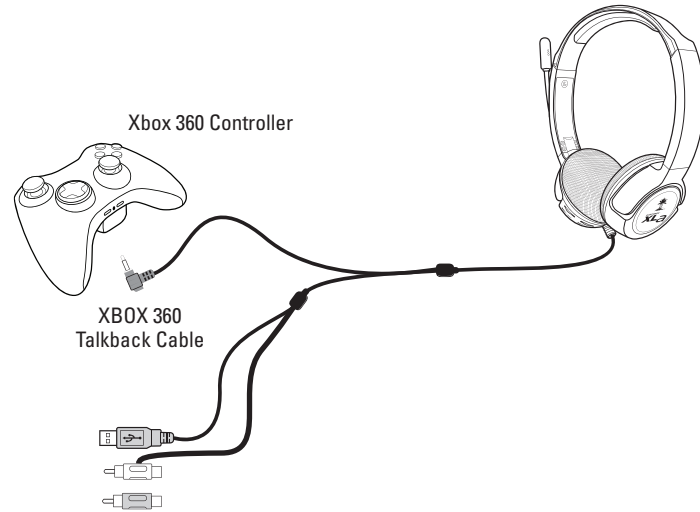


*All XBOX 360 models require an XBOX 360 Audio Adapter Cable for audio output when used with an HDMI connection (available from third party sellers).
NOTE: If your HDMI TV has red/white AUDIO OUT RCA jack you can use it to feed the sound from your TV to your Turtle Beach headset. (AUDIO IN jacks will not send sound out to your headset, you need AUDIO OUT.)

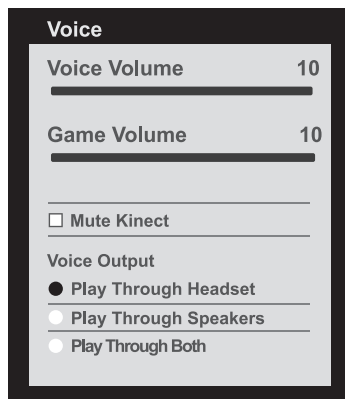
XBOX 360® Setup(RCA)



XBOX 360® Chat Setup



XBOX 360® Chat Setup



1. Press the XBOX 360 Guide Button, select "Settings > Preferences > Voice"
2. Voice Volume = **10**
3. Game Volume = **10**
4. Voice Output = **Play Through Headset**

Technical Specifications

Headset

- Speakers: 40mm with neodymium magnets
- Speaker Frequency Response: 20Hz - 20kHz, 120dB SPL @ 1kHz
- Xbox 360 connection: Dual RCA plugs
- Cable length: 4.5m (15ft)
- Xbox Live connection: 2.5mm plug
- Power: USB (5V @ 50mA max)

Maintaining Your Headset

Avoid Heat: Avoid resting or storing the headset or cables in or on top of units that generate heat. Gaming consoles are known to generate and dissipate unusually high levels of heat, and the heat can degrade the plastic resulting in twisting and eventual exposure of the internal wiring.

Storage: To help prevent damage to your Turtle Beach Headset, store it in a dry location where there is no risk of heavy items falling on your headset. Do not leave your headset or any accessories in a location where people or pets might accidentally trip over it.

Cleaning: Only use a dry cloth or slightly damp cloth. Cleaning solutions may damage your headset.

Transporting: Always disconnect all cables when transporting your headset.

Wire Management: Use the Velcro attached to your headset cable to avoid tangles when not in use.

Pets: Pets love to chew cords. To prevent this, keep your headset out of the reach of your pets.

XBOX 360 Talkback Cable: Pressure on the Talkback Cable can cause the jacks in the headset or XBOX 360 controller to become loose. A loose jack or wear and tear on the Talkback Cable can result in poor connection, pops, clicks, static, etc. In some cases of excess pressure, the tip of the talkback cable can break off inside the controller. Turtle Beach is not responsible if this happens to your XBOX 360 Controller.

Safety Notice

To avoid potential damage to the device, always disconnect all cables before transporting it.

WARNING: Permanent hearing damage can occur if a headset is used at high volumes for extended periods of time, so it is important to keep the volume at a safe level. Over time, your ears adapt to loud volume levels, so a level that may not cause initial discomfort can still damage your hearing. If you experience ringing in your ears after listening with the headset, it means the volume is set too loud.

The louder the volume is set, the less time it takes to affect your hearing. So, please take care to listen at moderate levels.

- Before placing a headset on your ears, turn the volume down completely, then slowly increase it to a comfortable level.
- Turn down the volume if you can't hear people speaking near you.
- Avoid turning up the volume to block out noisy surroundings.

Declaration of Conformity

We, Voyetra Turtle Beach,

150 Clearbrook Rd. Suite 162,

Elmsford, NY 10523

declare under sole responsibility that the product(s)

Ear Force XLa

to which this declaration relate(s) is (are) in conformance with:

The provisions of Directive 2004/108/EC governing electromagnetic compatibility using the following standards:

EN 55022:2010 Class B

EN61000-3-2:2006+A1:2009+A2:2009

EN61000-3-3:2008

EN55024:2010

EN61000-4-2:2009

EN61000-4-3:2006+A1:2008+A2:2010

EN61000-4-4:2004+A1:2010

EN61000-4-5:2006

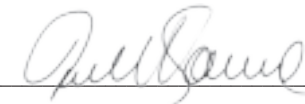
EN61000-4-6:2009

EN61000-4-8:2010

EN61000-4-11:2004

4/23/12

Place and Date of issue.



Printed Name: Frederick Romano
Title: Executive Vice President

FCC Declaration of Conformity

Product Name **Ear Force XLa**
Model Number **TBS-2205-01**
FCC Rules **FCC Part 15, Class B**

Operating Environment: **GENERAL OFFICE AND HOME USE**

FCC COMPLIANT STATEMENT

This device complies with part 15 of the FCC rules. Operation is subjected to the following conditions:

- (1) This device may not cause harmful interference, and
- (2) This device must accept any interference received including interference that may cause undesired operation.

INFORMATION TO USER

This equipment has been tested and found to comply with the limits for a Class B digital device, pursuant to Part 15 of FCC rules. These limits are designed to provide reasonable protection against harmful interference in a residential installation. This equipment generates, uses and can radiate radio frequency energy and, if not installed and used in accordance with the instructions, may cause harmful interference to radio communications. However, there is no guarantee that interference will not occur in a particular installation. If this equipment does cause harmful interference to radio or television reception, which can be determined by turning the equipment off and on, the user is encouraged to try to correct the interference by one or more of the following measures:

- 1) Reorient or relocate the receiving antenna.
- 2) Increase the separation between the equipment and receiver.
- 3) Connect the equipment into an outlet on a circuit different from that to which the receiver is connected.
- 4) Consult the dealer or an experienced radio/TV technician for help.

The user's manual or instruction manual for an intention or unintentional radiator shall caution the user that the changes or modifications not expressly approved by the party responsible for compliance could void the user's authority to operate the equipment.

WARNING: Changes or modifications made to this equipment not expressly approved by VOYETRA TURTLE BEACH, INC. may void user's authority to operate this equipment.

Limited Warranty for Turtle Beach Products

Voyetra Turtle Beach, Inc. ("VTB") warrants to the original end-user purchaser ("Purchaser") that the retail Turtle Beach hardware product herein ("Product") will be free of defects in materials and workmanship for a period of one year from the date of purchase by the Purchaser ("Warranty Period"). Any Extended Warranty or Service Plans purchased through a Retail store are not honored by VTB. The Warranty refers to the repair/replacement of a defective product during this period and not a refund.

This limited warranty extends only to the Purchaser and is not transferable or assignable to any subsequent purchaser. This limited warranty is applicable only in the country or territory where the Product was purchased from an authorized VTB retailer and does not apply to a Product that has been purchased as used or refurbished (except refurbished by VTB) or was included as part of a non-VTB product. **WARRANTY SERVICE**

In the USA and CANADA Warranty Service is provided by our TURTLE BEACH OFFICES and in all other Countries it is provided by our local International Distributors.

VTB does not warrant uninterrupted or error-free operation of the Product and is under no obligation to support the Product for all computer operating systems or future versions of such operating systems.

If a defect should occur during the Warranty Period, Purchaser must contact VTB to obtain a Return Merchandise Authorization ("RMA") number. Purchaser will be responsible for shipping costs incurred in returning the defective Product to an authorized VTB service center, or to the repair facility located at VTB's corporate headquarters. A copy of the dated proof of purchase and a description of the problem must be included with the defective Product. VTB will not be responsible for other products or accessories included with the defective Product sent to VTB. The RMA number must be clearly indicated on the outside of the package. Packages without an RMA number will be refused by VTB or its representatives and returned to sender at the sender's expense.

In the event of a defect, Purchaser's sole and exclusive remedy, and VTB's sole liability, is expressly limited to the correction of the defect by adjustment, repair, or replacement of the Product at VTB's sole option and expense. VTB owns all Products it has replaced and all parts removed from repaired Products. VTB uses new and reconditioned parts made by various manufacturers in performing warranty repairs and building replacement products. If VTB repairs or replaces a product, the original Warranty Period is not extended, however, VTB warrants that repaired or replacement parts will be free from defects in material and workmanship for a period of thirty (30) days from the date of repair or replacement, or for the remainder of the Warranty Period, whichever is greater.

Limited Warranty for Turtle Beach Products

This warranty does not apply to any Product that has had its serial number altered, removed or defaced, or any Product damage caused by shipping, improper storage, accident, problems with electrical power, abuse, misuse, neglect, ordinary wear, acts of God (e.g. flood), failure to follow directions, improper maintenance, use not in accordance with product instructions, unauthorized modification or service of the Product or damage resulting from the use of the Product with hardware, software or other products not provided by or specifically recommended by VTB.

THIS LIMITED WARRANTY IS PURCHASER'S SOLE AND EXCLUSIVE REMEDY AND IS IN LIEU OF ALL OTHER WARRANTIES, EXPRESS OR IMPLIED. TO THE EXTENT PERMITTED BY APPLICABLE LAW, VTB HEREBY DISCLAIMS THE APPLICABILITY OF ANY IMPLIED WARRANTY OF MERCHANTABILITY, FITNESS FOR A PARTICULAR PURPOSE OR USE FOR THE PRODUCT. IF SUCH A DISCLAIMER IS PROHIBITED BY APPLICABLE LAW, THE IMPLIED WARRANTY IS LIMITED TO THE DURATION OF THE FOREGOING LIMITED WRITTEN WARRANTY.

IN NO EVENT SHALL VTB BE LIABLE FOR ANY INDIRECT, INCIDENTAL, SPECIAL, PUNITIVE OR CONSEQUENTIAL DAMAGES, OR DAMAGES, INCLUDING BUT NOT LIMITED TO ANY LOST PROFITS, DATA, OR LOSS OF USE, ANY THIRD PARTY CLAIMS, AND ANY INJURY TO PROPERTY OR BODILY INJURY (INCLUDING DEATH) TO ANY PERSON, ARISING FROM OR RELATING TO THE USE OF THIS PRODUCT OR ARISING FROM BREACH OF THE WARRANTY, BREACH OF CONTRACT, NEGLIGENCE, TORT, OR STRICT LIABILITY, EVEN IF VTB HAS BEEN ADVISED OF THE POSSIBILITY OF SUCH DAMAGES.

This warranty supersedes all prior agreements or understandings, oral or written, relating to the Product, and no representation, promise or condition not contained herein will modify these terms. Some states do not allow the exclusion or limitation of incidental or consequential damages, so the above exclusion or limitation may not apply to you. This warranty gives you specific legal rights. You may also have other rights, which vary from state to state. Any action or lawsuit for breach of warranty must be commenced within eighteen (18) months following the purchase of the Product.

EXCLUSIONS FROM LIMITED WARRANTY:

This Limited Warranty shall not apply and VTB has no liability under this Limited Warranty if the Turtle Beach Product:

- is used for commercial purposes such as "LAN Centers" (including rental or lease);
- is modified or tampered with;
- is damaged by Acts of God, power surge, misuse, abuse, negligence, accident, wear and tear, mishandling, misapplication, or other causes unrelated to defective materials or workmanship;
- serial number is defaced, altered or removed;
- is not used in accordance with the documentation and use instructions; or
- is repaired, modified or altered by other than authorized repair centers.
- product is no longer available because it was discarded.

Notes



For more products, accessories and general product information, please visit
TurtleBeach.com

For warranty information and product support, please visit
TurtleBeach.com/support



MODEL: TBS-2205-01

This product is compliant with the Consumer Product Safety Improvement Act of 2008, Public Law 110-314 (CPSIA)

Copyright © 2012 Voyetra Turtle Beach, Inc. (VTB, Inc.) All rights reserved. Turtle Beach, the Turtle Beach Logo, Voyetra, Ear Force, and Engineered for Gaming are either trademarks or registered trademarks of VTB, Inc. Xbox, Xbox 360, and Xbox LIVE are registered trademarks of Microsoft Corporation. All other trademarks are properties of their respective companies and are hereby acknowledged. Assembled in China.