



Deep Silence 5 Rev. B



| | |
|---|-----------|
| I. Introduction | 02 |
| • Specifications | 02 |
| • Accessories | 02 |
| • Features | 03 |
| II. Installation Instructions | 06 |
| 1. Installation of the motherboard | 06 |
| 2. Installation of external drives | 07 |
| 2.1 Optical drives | 07 |
| 2.2 Utilizing the external 3.5 inch bay | 07 |
| 3. Installation options of HDD's | 07 |
| 3.1 Mounting of hard disk drives | 08 |
| 3.2 Conversion and removal of the HDD-cages | 08 |
| 3.3 Utilizing the 6 x 2.5 inch mounting frame | 09 |
| 4. Removing the front panel | 10 |
| 5. Fan assembly | 11 |
| 5.1 Front fans | 11 |
| 5.2 Fans under the top cover | 12 |
| 5.3 Fan at the bottom of the case | 12 |
| 6. The 2-channel fan control | 13 |
| 6.1 Connecting the fans to the fan control | 13 |
| 6.2 Operation of the fan control | 14 |
| 7. Installation of a water cooling | 14 |
| 7.1 Installation of a radiator or compact water cooling behind the front | 14 |
| 7.2 Installation of a radiator or compact water cooling under the top cover | 15 |
| 8. The I/O-Panel | 15 |
| III. Support | 16 |

I. Introduction

Congratulations on the purchase of your new Nanoxia Deep Silence 5 Revision B. We are confident that you will be delighted by your new PC case for many years to come.

The Nanoxia Deep Silence series has already won more than 100 awards from the international trade press. The innovative design and the exceptional quality certainly delight experts and enthusiasts alike.

Based on the suggestions of our customers, our design team has developed meaningful optimizations in the context of product development, which you will find in the present revision. For example, our designers have created a novel 6 x 2.5 inch mounting frame, which allows the space saving and decoupled mounting of up to six 2.5 inch drives.

In the new revision, the Deep Silence 5 Tower provides plenty of space for your most demanding projects. Due to the modular hard drive cages, the case offers maximum versatility and compatibility, both for water cooling project and the installation of high-end systems with air cooling.

Specifications

| | |
|-----------------------------|--|
| Dimensions: | 552 x 232 x 550 mm (Height x Width x Depth) |
| Material: | Steel, plastics |
| External drive bays: | 3 x 5,25 inch (tool-free) 1 x 5.25 inch /w 3.5 inch adapter (tool-free) |
| Internal drive bays: | 8 x 2.5/3.5 inch bays (max. 11) 6 x 2.5 inch |

Accessories

Rubber sealings for tube holes



EPS 4+4-Pin extension



24-Pin ATX extension



Fan screws



Stand-offs for mainboard



Screws for mainboard mounting



Screws for HDD mounting



Screws for 3.5" mounting frame



Mounting screws for 2.5"HDD/SSD



Mounting screws for 2.5"HDD/SSD (long)



Mounting screws for PSU



Thumbscrews



If you are missing any of the items listed above, please contact our customer service immediately: support@nanoxia-world.com

Features:

- Watercooling ready
- Complete customizable soundproofing with high quality materials meeting industrial standards
- 6 x 2.5 inch mounting frame
- Tool-free mounting of optical drives
- 2 x USB 3.0, 2 x USB 2.0
- 10 Slots for expansion cards
- Max. VGA length: 338 mm (up to 468 mm with the HDD cages removed)
- Room for CPU coolers with a maximum height of up to 185 mm
- Mounting hole for CPU cooler in the motherboard tray
- Cable management with 9 rubberised holes in the motherboard tray
- Stepless 2-channel fan control for up to 6 fans
- Nanoxia VentCover (noise indulated): 2 x top cover

Noise Insulation

The Nanoxia Deep Silence 5 Rev. B has been developed with the aim to offer the buyer a low-noise case, while at the same time allowing for extremely low system temperatures. The sound insulation design is based on multiple interacting design elements:

The most important part is the large scale lining of the case with sound-absorbing insulation materials. These materials are manufactured specifically to meet the requirements of the developers of the Nanoxia Deep Silence case series and act equally against airborne sound and structure-borne noise.

Included are special rubber seals which can be used to alternatively close the tube holes above the rear chassis fan, in case you don't need to use them.

The removable Nanoxia VentCovers mask the 120/140 mm fan holes in the case top. They allow the user to choose between the least possible noise and improved case ventilation.

Another design element for optimum sound insulation is the use of two sound-insulated front doors. The doors are equipped with sound-absorbing foam. Hard drives and power supply are also decoupled mounted.

The whole concept of sound proofing meets the highest expectations.

Ventilation System

The Nanoxia Deep Silence 5 Rev. B has an integrated ventilation system consisting of three 140 mm Deep Silence fans and a built-in 2-channel fan controller. A total of up to six fans can be mounted.

The Nanoxia VentCover under the top can be removed at any time and allow the installation of 120 mm or 140 mm fans for optimized heat dissipation.

The Deep Silence axial flow fans have been specifically optimised for very quiet operation. The range of fan speeds and controls was designed to enable each user to adjust the case ventilation to their own needs.

All air intake openings (front and bottom) are readily accessible and have easy to clean dust filters. Behind the lower front door two “Easy Access Panels” are located, allowing an easy access to both the dust filter and the front 140 mm fans.

Standard Equipment:

| | |
|---------------|---|
| Front: | 2 x 140 mm Nanoxia Deep Silence fans (max. 1,100 rpm) |
| Rear: | 1 x 140 mm Nanoxia Deep Silence fans (max. 1,100 rpm) |

Optional Equipment:

| | |
|-------------------|--|
| Top cover: | 2 x 120/140 mm fans |
| Bottom: | 1 x 120/140 mm fan (removal of the HDD-holder necessary) |

Watercooling-ready

The Nanoxia Deep Silence 5 Rev. B has been prepared for the installation of a water cooling system.

Therefore you can install radiators or a compact water cooling solution under the top cover as well as behind the front panel.

Top cover: 120/140/240/280 mm slim radiator

Before installing a water cooling system under the cover, please ensure if there is sufficient distance to the motherboard components. We recommend mounting the radiator behind the front of the case.

Front: 120/240 mm radiator

Behind the front panel, a 120 or 240 mm radiator can be mounted. Please note that the front HDD-cages must be removed for this - the HDD cage on the secondary mounting rail can usually remain in the case.

For compact water cooling solutions, you should check before the installation if the original factory hoses between the cooler and radiator are sufficiently long enough in order to mount the radiator-fan-combination at the front of the case.

Rubber hose guides:

Four rubber hose guides are located in the rear, so that the appropriate water cooling components can be operated or mounted externally.

On the next pages you can find some useful tips and explanations for the optimal use of your new case and for the installation of your hardware.

II. Installation Instructions

1. Installation of the motherboard

You can mount E-ATX, XL-ATX, ATX, M-ATX and Mini-ITX motherboards in the Deep Silence 5 Rev. B. In order to ensure an easy installation of your motherboard, we suggest the following procedure:

Please consult the following charts to find your motherboard form factor. Attach the stand-offs according to your motherboard form factor.

E-ATX



XL-ATX, ATX



Micro-ATX



Mini-ITX



Attach the included EPS extension cable on to your motherboard – do not connect it to the power supply yet.

Next you should mount the CPU cooler - for very large CPU coolers, the attachment of the EPS extension cable after installation can be difficult.

In the next step place the motherboard gently inside the case and lead the EPS extension cable through the opening provided in the top left of the mainboard tray. Fix the motherboard to the motherboard tray.

After the installation of the power supply, you can connect the EPS extension cable to the EPS-connector on the PSU at the back of the motherboard-tray



2. Installation of external drives

You can install up to four external drives. An adapter frame for mounting a 3.5 inch drive is included.

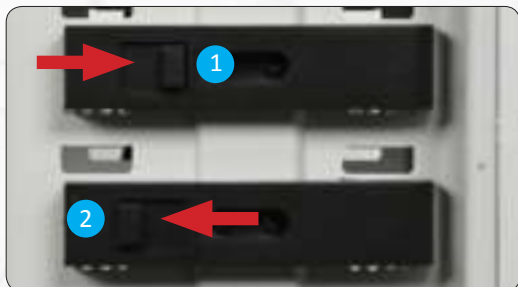
2.1 Optical drives

To install the optical drives, please remove both side panels. The installation of optical drives is tool-free.

Remove the 5.25 inch cover by pulling the lateral tilting lever cautiously towards you and take out the cover.

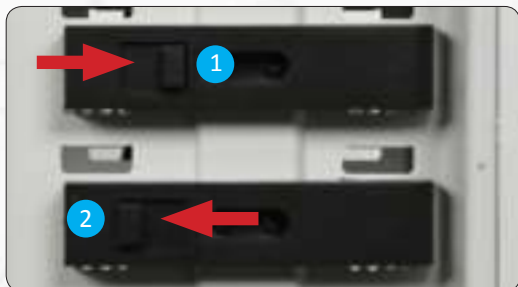


Then loosen the lock on both sides by dragging the black slider backwards (1).



Then slide the drive into the desired position.

Lock the holder by pushing the slider back to its original position (2).



2.2 Utilizing the external 3.5 inch bay

If you for example desire to place a 3.5 inch card reader, you can use the internal adapter for this purpose. Please remove at first the 5.25 inch cover ([see chapter 2.1](#)).

Open the two quick release of the bottom 5.25 inch bay and remove the adapter frame. Install the card reader in the frame and then put both the frame and the card reader back into the bay. Lock the quick-release. At the end you can put the included 3.5 inch adapter plate carefully before the card reader.

3. Installation options of HDD's

The Deep Silence 5 Rev. B allows you the decoupled mounting of 14 hard disk drives. A total of 11 x 2.5/3.5 inch bays are available. Included is the newly developed 6 x 2.5 inch mounting frame, which will take three 3.5 inch bays for installation. By using the 5.25 inch to 3.5 adaptor, you can mount a total of 15 hard disks drives in your case.

3.1 Mounting of hard disk drives

Install the 2.5 or 3.5 inch hard drives in the illustrated mounting frames. In order to extract the frame, squeeze the protruding brackets and pull the slide out gently.

To install a hard drive into a bracket insert the disk so that the connectors point to the back and attach the hard drive using the screws provided

For the fitting of 3.5 inch hard drives please use the holes in Figure 3A



For the fitting of 2.5 inch hard drives please use the holes in Figure 3B



To lock the drive, push the bracket with the drive back installed back into the slot until the bracket is re-engaged.



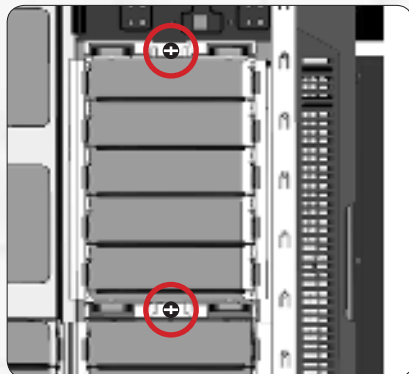
3.2 Conversion and removal of the HDD-cages

Your new case is equipped with three modular HDD-cages (2 x 3-bay, 1 x 5-bay). The cages can be removed, swapped or repositioned.

Due to this unique variability, you can:

- Adjust the number of available HDD mounts
- Install extra-long graphic cards
- Optimize the air flow within the case
- Mount a water cooling system behind the front fans

To remove the upper HDD cage, first remove the left side as seen from the front as well as the two thumb screws that secure the cage. Then you can carefully pull it out.

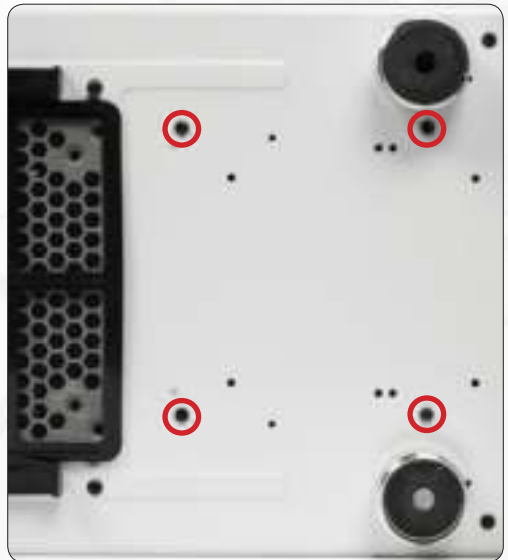


If you want to remove the lower hard drive cage in order to install a water cooling radiator, simply loosen the 8 screws holding the cage to the chassis.

First remove the front panel ([see chapter 4](#)).

Next loosen the four screws securing the HDD cage to the front panel.

Finally, remove the four screws at the bottom of the case which allow the cage to be removed.



3.3 Utilizing the 6 x 2.5 inch mounting frame

Our newly developed 6 x 2.5 inch frame allows the space-saving mounting of up to six 2.5 inch drives. For installation, the mounting frame will need three 3.5 inch bays.

To mount the hard disks, please remove the mounting frame. Insert your 2.5 inch drives

vertically in the frame and secure them on both sides with the 2.5 inch mounting screws (long).

Then push the frame with the hard drives into the HDD cage in the position you prefer.



If you plan to put the frame in the additional 3-bay HDD-cage, we recommend connecting the SATA power and data cables, before pushing the mounting frame back into the cage and then guide the cables through the appropriate cable guides in the motherboard tray.

4. Removing the front panel

To remove the front panel, simply hold the cut-out at the bottom of the front panel and pull it towards you with a firm tug.

Please note that the cables of the I/O-panel are guided through the front into the chassis, so please be careful when removing the front.



5. Fan assembly

Three 140 mm fans are pre-installed in your case. You can mount up to six fans in total.

We recommend the use of the 120 or 140 mm Nanoxia Deep Silence fans, available separately. These are technically and visually equivalent to the factory-installed case fans and will work in perfect harmony with the built-in fan control of your case.

You can, of course, connect the additional fans to the fan controller (see Chapter 6).

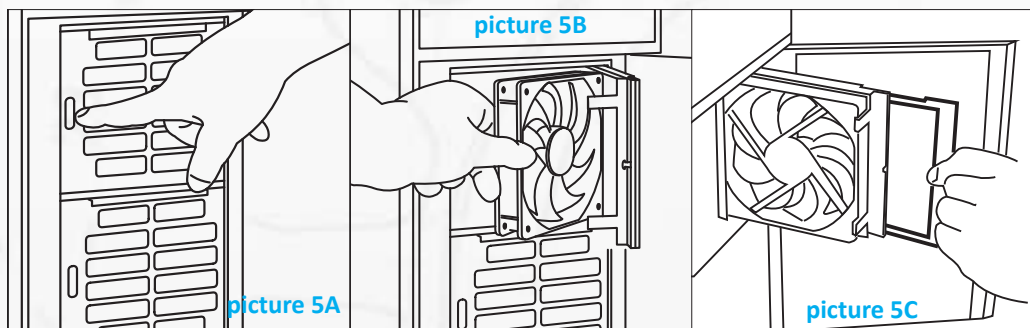
All air intake openings are equipped with easy to clean dust filters. We recommend that you clean them on a regular basis.

5.1 Front Fans

To switch the fans in the front or to clean the dust filters, first open the lower front door. Next, open the “Easy Access Panel” by pushing slightly on the left side of the panel (picture 5A).

You can remove the fan by pushing away the retaining lugs a little bit from the fan and then pull the fan out (picture 5B).

The dust filters can easily be pulled out, as you can see here (picture 5C).



Please note, that the filter elements must be fully inserted to guarantee the proper operation of the “Easy Access Panel”.

5.2 Fans under the top cover

If you want to install additional fans at the top of the case, please remove the Nanoxia VentCovers first by removing the screws on the outside of the case.

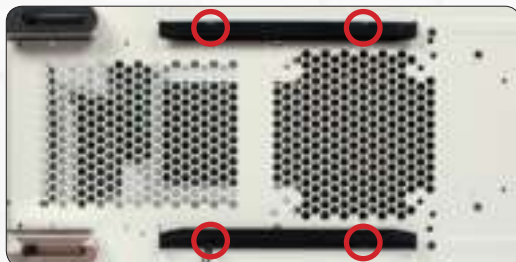
Next, hold the fans from the inside and secure them to the top by fastening the screws from the outside.

Case fans installed at the top of the case should exhaust air out of the case (fan rear side facing outwards).

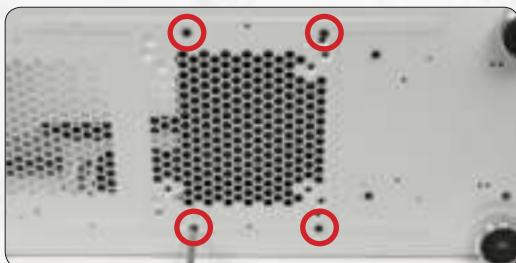
5.3 Fan at the bottom of the case

You can install a 120 or 140 mm fan on the bottom of the case. To do that, you must remove the secondary HDD-cage mounting rail from the case bottom. We recommend the following procedure:

a) Remove the dust filter and unscrew the screws on the two guide rails of the filter to remove it.



b) To remove the secondary hard drive bracket, please remove the four screws, as shown on the image.



c) Please place the fan on the inside of the case and secure it from the outside

d) Attach the dust filter mounts again to the case bottom and slide the dust filter back to its original position.

The dust filter at the bottom can be pulled out for easy cleaning.

Additional case fans on the bottom should be mounted so that cooler air is introduced into the case (fan rear side facing inwards).

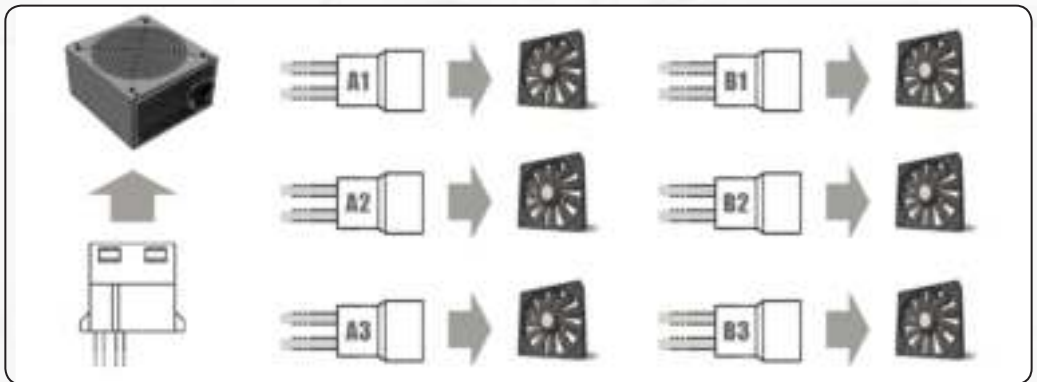
6. The 2-channel fan controller

The Deep Silence 5 Rev. B is equipped with a 2-channel fan control for up to six case fans. You can operate up to three fans per channel.

6.1 Connecting the fans to the fan control

The fan controller is powered by a 4-pin Molex connector that is connected directly to the power supply.

The controller has two channels (A and B), with each channel able to control up to three 3-pin fans, therefore a total of six fans can be controlled.



The fan controller is not designed for the operation of powerful fans. Please take this into account in particular when using fans from other manufacturers. The maximum power per channel must not exceed 18 watts.

6.2 Operation of the fan control

The sliders for controlling the fans controller can be found behind the upper front door. The upper slider controls channel A and the lower slider controls channel B.



7. Installing a water cooling solution

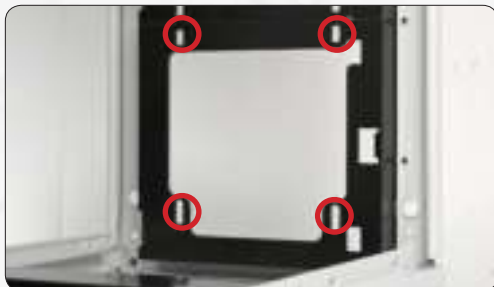
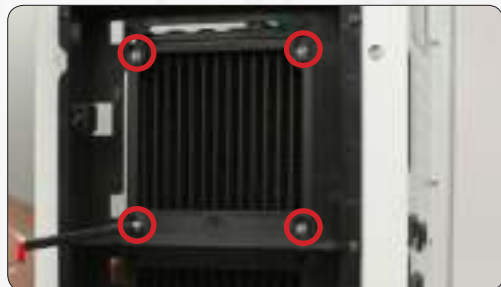
In Nanoxia Deep Silence 5 Rev. B you can install radiators or compact water cooling systems both behind the front panel and under the top cover. We recommend the installation of the radiator behind the front panel.

7.1 Installation of a radiator or compact water cooling solution behind the front

Thanks to the modular HDD-cages, you can mount a 120 or 240 mm radiator or a compact water cooling solution behind the front.

Please note that the cooler must not exceed 315 mm in length.

For the installation, please remove the modular HDD-cages ([see Chapter 3.2](#)). Open the lower front door and the “Easy Access” Panels and remove the fans. Hold the radiator from the inside and secure it with screws, using the corresponding mounting slots.



Finally, reinstall the fans. For maximum cooling performance, you can also mount additional fans on the back of the radiator.



7.2 Installation of a slim radiator or compact water cooling solution under the top cover

Under the top cover, you can install in a 240/280 mm slim radiator. To mount a radiator under the cover, please use the 120/140 mm fan mounting holes.

Before the installation, please check carefully, if the distance to the motherboard components is sufficient.



8. The I/O-Panel

The I/O panel includes connectors for external USB devices (2 x USB 2.0, 2 x USB 3.0), and the microphone and headphone ports.

The blue USB connectors are super-Speed USB 3.0, USB 2.0 ports are black. The left audio connector (when viewed from the front) is for headphones, the right is intended for a microphone.

The hard drive activity is indicated by flickering of the illuminated power button



III. Support

Dear customer,

The PC case you purchased has undergone a very thorough quality control. Nevertheless, should there be any unexpected problems with your case we ask that you first approach the dealer where you purchased the product. They are prepared to assist you with competent and uncomplicated advice and practical support.

If perhaps a few screws were missing or you might have a question that can't be answered by this manual, please do not hesitate to contact us directly by e-mail. Our staff will respond to all inquiries quickly and professionally.

Likewise, we would appreciate your suggestions and comments about our case very much.

Customers from Germany and other European countries can use the following e-mail address for support questions, spare parts or warranty issues:

support@nanoxia-world.com

Customers from Africa, Asia, Australia as well as North and South America can use the following e-mail address for support questions, spare parts or warranty issues:

support.overseas@nanoxia-world.com

For general inquiries, comments, suggestions and the like please refer to:

info@nanoxia-world.com

We are sure that you will be satisfied with Nanoxia Deep Silence 5 Rev. B for many years to come, so please enjoy your new PC case.

Your Nanoxia Support-Team



© Nanoxia 2015