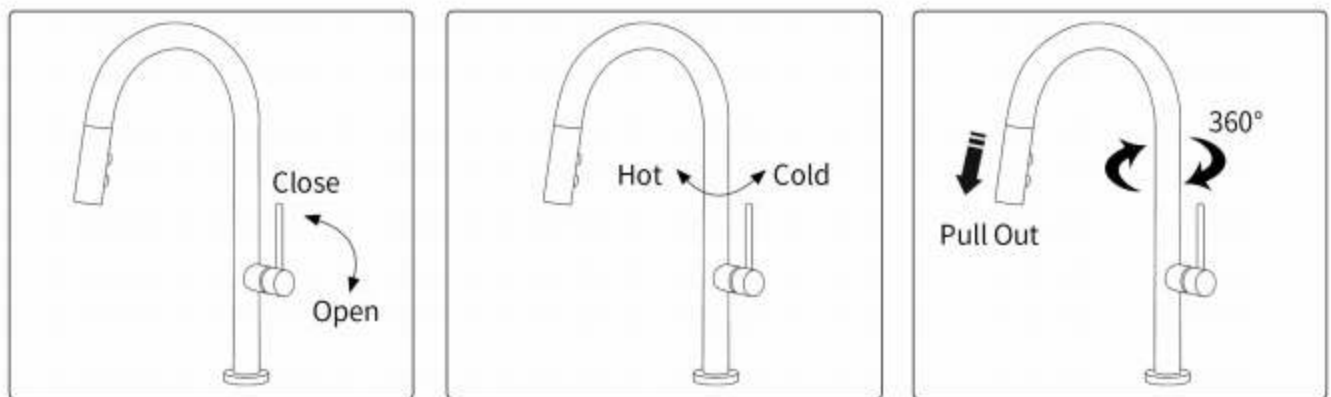


#### Installation Steps:

1. Screw the hot and cold inlet hose into the corresponding bottom joint of the mixer by hands. (make sure the hot on the left, the cold on the right)
2. Install the washers and fixing nuts in the order shown in the figure, adjust the direction of the faucet, and finally tighten the fixing nut by hands, then tighten the screws on the nut with a screwdriver.
3. Insert the pull out hose into the connector and confirm the interface of the connector is well matching.
4. Place the opened gravity ball in the middle of the pull out hose . (Whether install gravity ball or not, according to actual needs)
5. Connect the two inlet hoses of the faucet to the angle valve, the red inlet hose to the hot water, and the blue inlet hose to the cold water. Then tighten by a wrench.



#### Instructions For Use:

1. When the handle is vertical, the cartridge is closed.
2. Turn the handle to the right, the cartridge is opened, you can adjust the water temperature by rotate the handle forward or backward.
3. With the extendable hose, you can clean the edge of the sink easily.
4. The high arch spout can be rotated 360 degree, very perfect for double sink.

#### Maintenance Of The Faucet:

To keep the faucet with appearance smooth and good performance, please follow the following methods:

1. Rinse only with water and dry with a soft cotton cloth in daily cleaning.
2. Use a mild liquid and a colorless glass cleaner to remove the dirt on the surface.
3. Do not use abrasive cleaners, polishing agent, abrasive cloth, papers or scrapers.
4. Do not use acidic detergents, insoluble granular detergents, soaps, etc.
5. During daily use, the bubbler may accumulate mud and make the water flow become smaller and slower. At this time, remove the bubbler, rinsed with water, and then fit it again.

