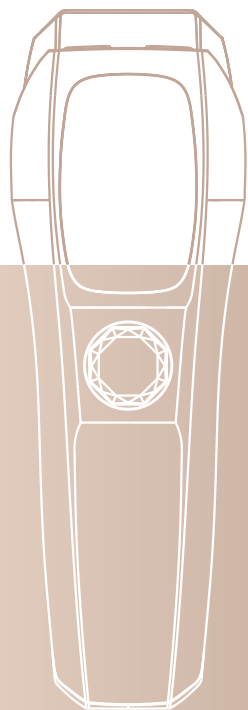


IPL hair removal system User Manual



Please read this manual carefully before using your IPL Hair Removal System.

Please read the instructions before use

Thank you for purchasing IPL hair removal system. Our device is always based on the comfort and safety of our customers. Before using the device, please read the user instructions and safety precautions carefully.

Marked attention, here are for your safe and proper use of the device, and avoid bringing damage and doing harm to you and your surrounding people.

CATALOG

Introduction	3
Contraindications	4
Treatment Precautions	4
Warnings	5
Illustrated Guide	6
Specifications	7
Method of Use	7
Hair Removal Treatment Cycle	9
After Treatment	9
Possible Side Effect	10
Patch Test	11
Maintenance	11
Trouble Shooting	11

INTRODUCTION

IPL hair removal system is a new breakthrough product that uses Intense Pulsed Light ("IPL") to remove unwanted hair at-home. Utilizes the same clinically proven technology that professional dermatologists and salon use, whilst optimizing for personal treatment in the privacy and comfort of your own home. is safe, painless and effectively permanent solution to remove unwanted hair in comparison with continual waxing, shaving or plucking.

WORKING PRINCIPLE

IPL hair removal system is based on thermal damage theory, intense pulsed light penetrates into dermis and is absorbed by melanin in hair follicle, producing photothermal effect, conducting the energy from hair section to hair root, rising the temperature of melanin rapidly and decomposing it. Thus hair re-growth is stopped permanently.



1-4weeks 3-5 times a week Hypnotic hair follicle	4-8weeks 2-3 times a week Hair fall off	8-12 weeks 1 time a month Inhibiting regeneration
Heat is absorbed by the melanin in the hair follicle.	With the cycle of hair, naturally fall off.	Regular use can inhibit hair regeneration.

CONTRAINDICATIONS

The device is intended for man or woman who wants to remove unwanted hair at home. Please **DO NOT USE** the device if you have any of the following conditions.

- If you are under 16 years old.
- If you are pregnant women and nurturer.
- If you are continuously to use steroid, etc.
- If your skin has been artificially or naturally tanned, or is burned from sun overexposure during the past 4 weeks.
- If you have tattoo and permanent make up parts, etc.
- If you have melanin adherent parts, dark brown or black spots such as birthmarks, moles or warts in the area you wish to treat.
- If you have a history of skin cancer or pre-cancerous lesions (e.g. nevi or a large number of moles).
- If you have any skin condition in the treatment area, including psoriasis, vitiligo, eczema, acne, herpes simplex or active infections or wounds.
- If you have light hypersensitivity or diseases that are related with light.
- If you are patients with epilepsy.
- If you are with electronic medical machine implants into body, such as pacemaker, etc. Or electronic medical machine maintains lives, such as artificial heart-lung, etc.
- If you take in radioactive ray's treatment and chemotherapeutics within 3 months.
- If you use medicine and astringent that is easy to cause light hypersensitivity within 1 month, is easy to cause accident and problems.
- If you have any other condition that would make you unsafe if you treated. In case of doubt, please consult with your physician.

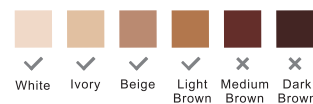
TREATMENT PRECAUTIONS

IMPORTANT SAFETY INFORMATION

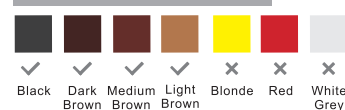
- DO NOT** use the device on the skin sensitive parts: such as the nipple, genitals or around the anus. These areas may have a darker skin color and /or greater hair density. Use the device in these areas may cause discomfort /pain or injure your skin.
- DO NOT** use the device on pigmentation skin, such as birthmarks, dark brown or black spots, freckles and warts. And **DO NOT** use the device on tattoo or permanent in the treatment area. If these are present on the area you want to treat, you can use an opaque white makeup pencil to cover them.

DO NOT use the device on dark brown or black skin. Since dark skin absorbs more light energy, treating very dark skin may cause discomfort/pain and adverse effects (e.g., burns, blisters, discoloration or scarring) and injure your skin. By the way, please **DO NOT** use the device on red, very blonde, grey or white hair, the device is not effective on these hair colors. See **SKIN TONE CHART** and **HAIR COLOR CHART** before use.

SKIN TONE CHART



HAIR COLOR CHART



Note: If your skin has been artificially or naturally tanned, or burned from sun overexposure during the past 4 weeks. Please **DO NOT** use the device.

WARNINGS

IMPORTANT SAFETY INFORMATION

- DO NOT** use the device on scalp, eyebrows or anywhere near or around the eyes. Use the device in these areas may hurt your eyes. Never look directly at the light coming from the treatment area.
- DO NOT** repeat treat more than three times on the same area. Too much energy penetrates into dermis may damage skin.
- DO NOT** use your hand to entirely block the cooling ventilation holes on the back, which may affect the normal use of the device.
- DO NOT** use the device If you feel intense pain during treatment.

IPL hair removal system



Made In China

DO NOT use the device in or near water and wet surfaces such as bathtubs, showers, basins or other vessels that may contain water. This will dangerously expose you to electrocution and malfunction.

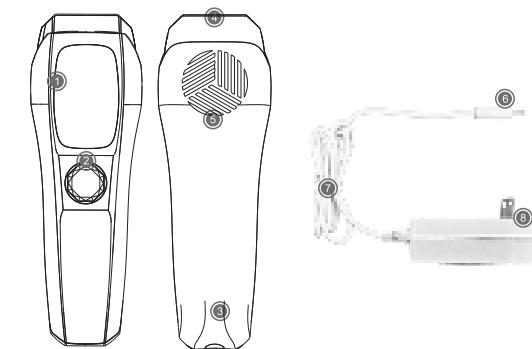
DO NOT use the device in a flammable or explosive environment.

DO NOT use petroleum-based or flammable cleaning agents (alcohol, acetones etc) on the device as these pose a fire risk.

WARNINGS

- **DO NOT** use if the device is cracked (such as cracked housing, cord damage etc).
- **DO NOT** use if the glass filter it is cracked or missing.
- **DO NOT** touch the glass filter during or directly after use since it will get hot.
- **DO NOT** attempt to use the device on the body parts where you want hair.
- **DO NOT** attempt to repair and open the device by yourself.

ILLUSTRATED GUIDE



- ① LCD Status Display
- ② Power Switch/Energy Level Adjustment/Flash Button
- ③ Power Socket
- ④ Flash Window
- ⑤ Ventilation Holes
- ⑥ Power Connector
- ⑦ Power Cable
- ⑧ Power Supply

Note: As different shooting angle, the color of different lamp filter is a little different. The pictures above are provided only as a reference.

TECHNICAL SPECIFICATIONS

Light Source	Intense Pulsed Light
Lamp Life	1000,000 pulses
Wave length	510~1200 nm
Energy Level	10 levels
Area Spot Size	4.2cm ²
Product Size	L206 x W68 x H47mm
Power	36 w
Power Supply	AC100~240V-50/60Hz 1.5A
Output	12V/4A

ENVIRONMENTAL SPECIFICATIONS

Storage and Transportation	
Temperature	14°F-131°F (-10°C-55°C)
Humidity	90% at 131°F (55°C)
Air Pressure	700-1060 hPa
Operating Conditions	
Temperature	50°F-122°F (10°C-50°C)
Humidity	Up to 80% at 99°F (37°C)
Altitude	Up to 13000 ft (3900 m)

Do not expose device directly to the sun or other radiation.

METHOD OF USE

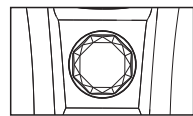
1. Connect the device and turn on it.

Insert the Power Connector in the Power Socket. Plug in the power. Then press Power Switch to power on.

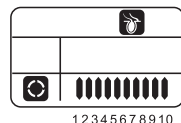


2. Select energy level

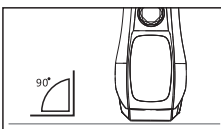
The device has 10 energy levels, from 1 (the lowest) to 10 (the highest), designed 10 triangles arranged like a fan on the LCD Status Display. Increase or decrease energy level by pressing Energy Level Adjustment Button repeatedly. After the energy level has been adjusted at the highest setting, then an interface of shutdown is sure to display which shows digital countdown, while you are pressing the button continuously in the process of returning back to the lowest energy level. It is advisable to perform a patch test to examine the appropriate energy level for you (See chapter in PATCH TEST).



Energy Level +
Energy Level -



Energy Level Icon
on Status Display



3. Treatment

Please align Flash Window vertically at 90° and place firmly on your skin where you want to remove unwanted hair. Once LCD status display is flashing, press Flash Button to send pulses. You can choose two different treatment modes according to your need.

TREATMENT MODES

Single Flash Mode

Using the single Flash Mode, when you press the Flash Button, a flash is emitted every time. Factory setting is single Flash Mode. This mode is for precision areas like underarms, bikini and face.

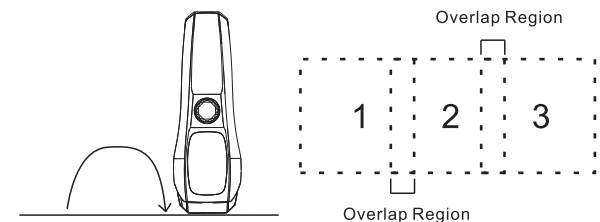
Slide Mode

Press and hold the Flash Button down for 3 seconds, you will see ② icon on LCD status display is blinking. It means the Slide Mode is activated, which allows you to release it. The device will emit flash repeatedly whenever you place the Flash Window firmly on your skin. Slide Mode is for easy, fast treatments on straightforward areas such as legs and stomach.

To turn off Slide Mode, just press the Flash Button once and the device will switch to single Flash Mode.

4. Move to next treatment area.

When you see flash, slightly move the device (about 5mm) to the next treatment area. There is a certain overlap between the two treatment areas. Please repeat the treatment according to the above steps.



HAIR REMOVAL TREATMENT CYCLE

For achieving optimum results, it is advisable to radiate 2, maximum 3 times on each treated area. In 1-4 weeks, please proceed with 3-5 treatments per week. You can feel the hair grow slowly. In 5-8 weeks, please proceed with 2-3 treatments per week. You can see hair fall off naturally. In 8-12 weeks, please proceed with 1 treatment per 2 weeks or month. The hairs will be inhibited to grow after finishing the first 3 months cycle. In case you no longer see hair growing, you do not need to complete the full 12 weekly treatments. You can switch to maintenance treatments when the hairs begin to reappear (such as every 2 or 3 months, depends on individual hair growth rhythm).

AFTER TREATMENT

After treatment, it is advisable to use sunscreen SPF15 whenever treated areas may be exposed to the sun and/or tanning lights, such as tanning booths or solariums.

Any activity or skin product may irritate your skin for 24 hours after treatment should be avoided, including using hot tubs or saunas, wearing tight-fitting clothing, using bleaching and creams, perfumed products or peeling products. The above may cause irritate treated areas, such as itching and redness.

POSSIBLE SIDE EFFECT

Some people may feel slight discomfort (such as redness of the skin) when using the device--this is normal. If you feel heat and tingling when activating the flash, followed by redness in the skin. This type of reaction usually will disappear within 24 hours. Adverse reactions are usually immediate or appear within 24 hours. In rare cases, they may take up to 72 hours to appear. If you feel abnormal skin reactions please contact your physician.

Possible Side Effect	How to Assess and React?
Warm or tingling feeling during treatment that typically disappear after a few seconds to a minute, and decrease with continued use.	It is expected and normal for all IPL treatments. You can follow the instructions to continue using the device.
Discomfort or intense pain during treatment or persists after a treatment.	Stop to use the device and consult your physician before using it again.
Skin redness during or after treatment which disappears within minutes to several hours.	It is expected and normal for all IPL treatments. You can follow the instructions to continue using the device once skin redness has disappeared.
Skin redness does not disappear within 24-48 hours after treatment.	Stop to use the device and consult your physician before using it again.

In Very Rare Cases:

Swelling and redness around the hair follicle disappears within two or three days.	You can follow the instructions to continue using the device once swelling and redness around the hair follicle has disappeared.
Swelling and redness around the hair follicle does not disappear within two or three days.	Stop to use the device and consult your physician before using it again.
Temporary changes in skin color (lightening or darkening).	If you skin color changes, stop using the device and consult your physician.
Increase in hair growth in areas of treatment (more likely to be seen with subjects of Mediterranean descent).	If this increase persists over several treatments, stop using the device and consult your physician.

PATCH TEST

Before your first treatment, we recommend you test your skin for reaction to use the device on a small area of skin parts where you want to treat.

HOW TO PERFORM A PATCH TEST

- Shave small area to be treated.
- Wear safety glasses.
- Choose the lowest energy (level 1), and then apply the device to the area and emit the first pulse. If you do not feel any kind of discomfort, you can increase the appropriate energy and move to next small skin area to perform a patch test. (See chapter METHOD OF USE to operate the device.)
- Wait 24 hours to examine the test area. If the skin appears normal, begin your first treatment. If you feel discomfort and appear skin reactions, stop to use the device and consult your physician. Do not treat the patch tested area for at least one week hours after the test.

MAINTENANCE

MAINTENANCE AND STORAGE

After treatment, it is recommended to clean the device and then keep maintenance.

- Turn off the device and disconnect the Power plug(8). Gently wipe the Flash Window (4) with a clean dry, lint-free cloth.
- **DO NOT** store the device in a humid environment. Make use store it in a cool, dry place.
- **DO NOT** rinse or immerse the device in water or any other liquid.

TROUBLE SHOOTING

PROBLEM	CONTROL/SOLUTION
The device does not send pulses.	Make sure align Flash Window vertically at 90° and place firmly on the skin. When you see LCD Status Display is blinking, press Flash Button to emit pulses.
Power cut-off during treatment	Check if the Power Connector(6) or Power Supply is loose.
The device does not start.	Make sure the device is connected well with the Power Connector and Power Supply is connected to electrical socket.

DO NOT attempt to open or repair your IPL HAIR REMOVAL SYSTEM. only authorized repair centers are permitted to perform repairs.