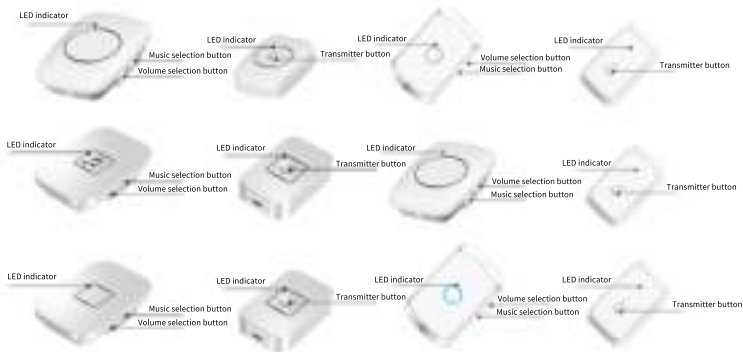
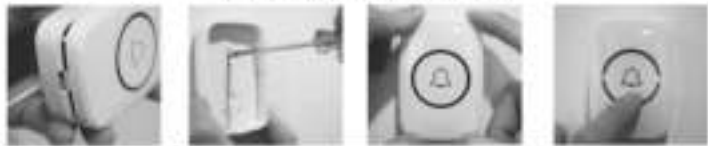


Installation methods and precautions

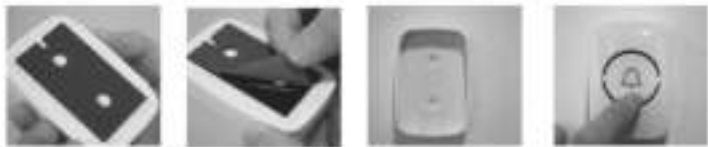
Receiver and transmitter key schematic diagram



Installation Notes Screw mounting method



Double-sided tape installation method



Installation methods and precautions

A series wireless doorbell:

A series wireless doorbell is A smart doorbell different from the traditional wireless doorbell, the transmitter and receiver can be freely paired, simple operation and easy to use, no electromagnetic interference.

Product features:

- ◆ Fashionable design ◆ Easy installation ◆ Environment friendly ◆ 60 Chord tones
- ◆ 5 levels of volume (including mute) ◆ The receiving distance is long
- ◆ Up to 300 meters in a straight line (laboratory test data)
- ◆ And the transmitter and receiver can be freely matched.

Music Settings:

After selecting music, long press the volume button for 4 seconds, and the receiver lights up and enters the learning state. When the transmitter is pressed, the receiver flashes light and emits a ring tone to lock the ring tone successfully.

Free matching mode of transmitter and receiver:

Long press the volume button of the receiver for 4 seconds, the receiver lights up and enters the learning state. When the transmitter is pressed, the receiver flashes light and rings to indicate that a match has been made.

NOTE:

1. Non-professional personnel are forbidden to open the device which may result in destroy precision electronic components.
2. High-voltage circuit in the device, don't open it when it's working. Or it may result in electrical shock.
3. Use the doorbell in the right way can makes it long life.
4. Functional range may be adversely affected by one or more of the following factors: weather, radio frequency interference, low transmitter battery and obstructions between the transmitter and receiver.
5. Old batteries can also corrode the connections and damage the button or doorbell. If you found out the function range decrease shorter, please change fresh battery in time.

WARRANTY:

1. 1 year worry-free after-sales guarantee service.
2. The guarantee except incorrect using way, accidental damage or non-professional personnel open the device.
3. The accessories of the product are not covered by the warranty.

Product:

1. Push button: 23A12V alkaline battery.
2. Ring Bell: 110/220 V.