

ONKYO

NETWORK RECEIVER

R-N855

Instruction Manual

Thank you for purchasing an Onkyo product. Please read this manual carefully before making any connections or using this product. By following these instructions, you'll get the best audio performance and the most listening pleasure from your Onkyo product. Keep this manual for future reference.

Getting StartedEn-2

Connections En-10

Initial Setup..... En-12

Playback..... En-14

Advanced Setup..... En-29

Firmware Update..... En-32

Troubleshooting En-34

Specifications..... En-37



WARNING:

TO REDUCE THE RISK OF FIRE OR ELECTRIC SHOCK, DO NOT EXPOSE THIS APPARATUS TO RAIN OR MOISTURE.

CAUTION:

TO REDUCE THE RISK OF ELECTRIC SHOCK, DO NOT REMOVE COVER (OR BACK). NO USER-SERVICEABLE PARTS INSIDE. REFER SERVICING TO QUALIFIED SERVICE PERSONNEL.



WARNING
RISK OF ELECTRIC SHOCK
DO NOT OPEN

AVIS
RISQUE DE CHOC ELECTRIQUE
NE PAS OUVRIR




The lightning flash with arrowhead symbol, within an equilateral triangle, is intended to alert the user to the presence of uninsulated "dangerous voltage" within the product's enclosure that may be of sufficient magnitude to constitute a risk of electric shock to persons.



The exclamation point within an equilateral triangle is intended to alert the user to the presence of important operating and maintenance (servicing) instructions in the literature accompanying the appliance.

Important Safety Instructions

1. Read these instructions.
2. Keep these instructions.
3. Heed all warnings.
4. Follow all instructions.
5. Do not use this apparatus near water.
6. Clean only with dry cloth.
7. Do not block any ventilation openings. Install in accordance with the manufacturer's instructions.
8. Do not install near any heat sources such as radiators, heat registers, stoves, or other apparatus (including amplifiers) that produce heat.
9. Do not defeat the safety purpose of the polarized or grounding-type plug. A polarized plug has two blades with one wider than the other. A grounding type plug has two blades and a third grounding prong. The wide blade or the third prong are provided for your safety. If the provided plug does not fit into your outlet, consult an electrician for replacement of the obsolete outlet.
10. Protect the power cord from being walked on or pinched particularly at plugs, convenience receptacles, and the point where they exit from the apparatus.
11. Only use attachments/accessories specified by the manufacturer.
12. Use only with the cart, stand, tripod, bracket, or table specified by the manufacturer, or sold with the apparatus. When a cart is used, use caution when moving the cart/apparatus combination to avoid injury from tip-over.


PORTABLE CART WARNING
S3125A
13. Unplug this apparatus during lightning storms or when unused for long periods of time.
14. Refer all servicing to qualified service personnel. Servicing is required when the apparatus has been damaged in any way, such as power-supply cord or plug is damaged, liquid has been spilled or objects have fallen into the apparatus, the apparatus has been exposed to rain or moisture, does not operate normally, or has been dropped.
15. Damage Requiring Service
Unplug the apparatus from the wall outlet and refer servicing to qualified service personnel under the following conditions:
 - A. When the power-supply cord or plug is damaged,
 - B. If liquid has been spilled, or objects have fallen into the apparatus,
 - C. If the apparatus has been exposed to rain or water,
 - D. If the apparatus does not operate normally by following the operating instructions. Adjust only those controls that are covered by the operating instructions as an improper adjustment of other controls may result in damage and will often require extensive work by a qualified technician to restore the apparatus to its normal operation,
 - E. If the apparatus has been dropped or damaged in any way, and
 - F. When the apparatus exhibits a distinct change in performance this indicates a need for service.
16. Object and Liquid Entry
Never push objects of any kind into the apparatus through openings as they may touch dangerous voltage points or short-out parts that could result in a fire or electric shock.
The apparatus shall not be exposed to dripping or splashing and no objects filled with liquids, such as vases shall be placed on the apparatus.
Don't put candles or other burning objects on top of this unit.
17. Batteries
Always consider the environmental issues and follow local regulations when disposing of batteries.
18. If you install the apparatus in a built-in installation, such as a bookcase or rack, ensure that there is adequate ventilation.
Leave 20 cm (8") of free space at the top and sides and 10 cm (4") at the rear. The rear edge of the shelf or board above the apparatus shall be set 10 cm (4") away from the rear panel or wall, creating a flue-like gap for warm air to escape.

Precautions

- 1. Recording Copyright**—Unless it's for personal use only, recording copyrighted material is illegal without the permission of the copyright holder.
- 2. AC Fuse**—The AC fuse inside the unit is not user-serviceable. If you cannot turn on the unit, contact the dealer from whom you purchased this unit.
- 3. Care**—Occasionally you should dust the unit all over with a soft cloth. For stubborn stains, use a soft cloth dampened with a weak solution of mild detergent and water. Dry the unit immediately afterwards with a clean cloth. Don't use abrasive cloths, thinners, alcohol, or other chemical solvents, because they may damage the finish or remove the panel lettering.
- 4. Power**
WARNING
BEFORE PLUGGING IN THE UNIT FOR THE FIRST TIME, READ THE FOLLOWING SECTION CAREFULLY.
AC outlet voltages vary from country to country. Make sure that the voltage in your area meets the voltage requirements printed on the unit's rear panel (e.g., AC 220-240 V, 50/60 Hz or AC 120 V, 60 Hz).
The power cord plug is used to disconnect this unit from the AC power source. Make sure that the plug is readily operable (easily accessible) at all times.
Pressing the [ON/STANDBY] button to select Standby mode does not fully disconnect from the mains. If you do not intend to use the unit for an extended period, remove the power cord from the AC outlet.
- 5. Preventing Hearing Loss**
Caution
Excessive sound pressure from earphones and headphones can cause hearing loss.
- 6. Batteries and Heat Exposure**
Warning
Batteries (battery pack or batteries installed) shall not be exposed to excessive heat as sunshine, fire or the like.
- 7. Never Touch this Unit with Wet Hands**—Never handle this unit or its power cord while your hands are wet or damp. If water or any other liquid gets inside this unit, have it checked by the dealer from whom you purchased this unit.
- 8. Handling Notes**
 - If you need to transport this unit, use the original packaging to pack it how it was when you originally bought it.
 - Do not leave rubber or plastic items on this unit for a long time, because they may leave marks on the case.
 - This unit's top and rear panels may get warm after prolonged use. This is normal.
 - If you do not use this unit for a long time, it may not work properly the next time you turn it on, so be sure to use it occasionally.
- 9. Cautions regarding Wi-Fi and BLUETOOTH® features**
[*] R-N855
This [*] uses radio waves in the 2.4 GHz and 5 GHz frequency bands. There are nations and regions

where the use of particular 5 GHz bands are prohibited outdoors, so do not use this unit outside in those places.

10. WARNING

Store small parts out of the reach of children and infants. If accidentally swallowed, contact a doctor immediately.

For British models

Replacement and mounting of an AC plug on the power supply cord of this unit should be performed only by qualified service personnel.

IMPORTANT

The wires in the mains lead are coloured in accordance with the following code:

Blue: Neutral

Brown: Live

As the colours of the wires in the mains lead of this apparatus may not correspond with the coloured markings identifying the terminals in your plug, proceed as follows:

The wire which is coloured blue must be connected to the terminal which is marked with the letter N or coloured black.

The wire which is coloured brown must be connected to the terminal which is marked with the letter L or coloured red.

IMPORTANT

The plug is fitted with an appropriate fuse. If the fuse needs to be replaced, the replacement fuse must be approved by ASTA or BSI to BS1362 and have the same ampere rating as that indicated on the plug. Check for the ASTA mark or the BSI mark on the body of the fuse. If the power cord's plug is not suitable for your socket outlets, cut it off and fit a suitable plug. Fit a suitable fuse in the plug.

For European Models

Declaration of Conformity with regard to the R&TTE Directive 1999/5/EC

[*] R-N855 5 GHz Band



Indoor Use Only

W52 and W53 bands are restricted to indoor operations only.

We declare, under our sole responsibility, that this product complies with the standards:

- Safety
- Limits and methods of measurement of radio disturbance characteristics
- Limits for harmonic current emissions
- Limitation of voltage changes, voltage fluctuations and flicker
- RoHS Directive, 2011/65/EU
- Hereby, Onkyo & Pioneer Corporation, declares that this [*] is in compliance with the essential

- requirements and other relevant provisions of Directive 1999/5/EC.
- С настоящето, Onkyo & Pioneer Corporation, декларира, че [*] е в съответствие със съществените изисквания и другите приложими разпоредби на Директива 1999/5/EC.
 - Onkyo & Pioneer Corporation tímto prohlašuje, že [*] splňuje základní požadavky a všechna příslušná ustanovení Směrnice 1999/5/ES.
 - Undertegnede Onkyo & Pioneer Corporation erklærer herved, at følgende udstyr [*] overholder de væsentlige krav og øvrige relevante krav i direktiv 1999/5/EF.
 - Hiermit erklärt Onkyo & Pioneer Corporation, dass sich das Gerät [*] in Übereinstimmung mit den grundlegenden Anforderungen und den übrigen einschlägigen Bestimmungen der Richtlinie 1999/5/EG befindet.
 - Käesolevaga kinnitab Onkyo & Pioneer Corporation seadme [*] vastavust direktiivi 1999/5/EÜ põhinõuetele ja nimetatud direktiivist tulenevatele teistele asjakohastele sätetele.
 - ΜΕ ΤΗΝ ΠΑΡΟΥΣΑ Ο ΚΑΤΑΣΚΕΥΑΣΤΗΣ Onkyo & Pioneer Corporation ΔΗΛΩΝΕΙ ΟΤΙ [*] ΣΥΜΜΟΡΦΩΝΕΤΑΙ ΠΡΟΣ ΤΙΣ ΟΥΣΙΩΔΕΙΣ ΑΠΑΙΤΗΣΕΙΣ ΚΑΙ ΤΙΣ ΛΟΙΠΕΣ ΣΧΕΤΙΚΕΣ ΔΙΑΤΑΞΕΙΣ ΤΗΣ ΟΔΗΓΙΑΣ 1999/5/ΕΚ
 - Por la presente, Onkyo & Pioneer Corporation, declara que este [*] cumple con los requisitos esenciales y otras exigencias relevantes de la Directiva 1999/5/EC.
 - Par la présente, Onkyo & Pioneer Corporation déclare que l'appareil [*] est conforme aux exigences essentielles et aux autres dispositions pertinentes de la directive 1999/5/CE.
 - Con la presente Onkyo & Pioneer Corporation dichiara che questo [*] è conforme ai requisiti essenziali ed alle altre disposizioni pertinenti stabilite dalla direttiva 1999/5/CE.
 - Ar šo Onkyo & Pioneer Corporation deklarē, ka [*] atbilst Direktīvas 1999/5/EK būtiskajām prasībām un citiem ar to saistītajiem noteikumiem.
 - Šiuo Onkyo & Pioneer Corporation deklaruoja, kad šis [*] atitinka esminius reikalavimus ir kitas 1999/5/EB Direktyvos nuostatas.
 - A Onkyo & Pioneer Corporation ezzennel kijelenti, hogy a [*] típusú berendezés teljesíti az alapvető követelményeket és más 1999/5/EK irányelvben meghatározott vonatkozó rendelkezéseket.
 - Hierbij verklaart Onkyo & Pioneer Corporation dat het toestel I [*] in overeenstemming is met de essentiële eisen en de andere relevante bepalingen van richtlijn 1999/5/EG.
 - Niniejszym Onkyo & Pioneer Corporation deklaruje że [*] jest zgodny z zasadniczymi wymaganiami i innymi właściwymi postanowieniami Dyrektywy 1999/5/EC.
 - Eu, Onkyo & Pioneer Corporation, declaro que o [*] cumpre os requisitos essenciais e outras provisões relevantes da Directiva 1999/5/EC.
 - Prin prezenta, Onkyo & Pioneer Corporation, declară că aparatul [*] este în conformitate cu cerințele esențiale și cu alte prevederi pertinente ale Directivei 1999/5/CE.
 - Onkyo & Pioneer Corporation tímto vyhlasuje, že [*] a splňuje základné požiadavky a všetky príslušné ustanovenia Smernice 1999/5/ES.
 - Onkyo & Pioneer Corporation izjavlja, da je ta [*] v skladu z bistvenimi zahtevami in drugimi relevantnimi določili direktive 1999/5/ES.
 - Onkyo & Pioneer Corporation vakuuttaa täten että [*] tyyppinen laite on direktiivin 1999/5/EY oleellisten vaatimusten ja sitä koskevien direktiivin muiden ehtojen mukainen.
 - Härmed förklarar Onkyo & Pioneer Corporation att denna [*] följer de väsentliga kraven och andra relevanta stadgar i Direktiv 1999/5/EC.
 - Hér með lýsir Onkyo & Pioneer Corporation því yfir að varan [*] er í samræmi við grunnkröfur og aðrar kröfur sem gerðar eru í tilskipun 1999/5/EC.
 - Onkyo & Pioneer Corporation erklærer herved at denne [*] er i overensstemmelse med væsentlige krav og andre relevante bestemmelser i direktiv 1999/5/EC.
 - Ovime Onkyo & Pioneer Corporation, potvrđuje da je [*] u suglasnosti sa osnovnim zahtjevima i ostalim relevantnim odredbama Direktive 1999/5/EC.

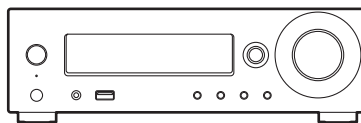
WEEE

<http://www.onkyo.com/manual/weee/weee.pdf>

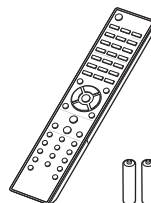
Contents

What's in the box	5
Front Panel	6
Rear Panel	7
Remote Controller	8
Display	9
Connect the Speakers	10
Connecting the Antennas and Power Cord, etc.	11
Power On & Initial Setup	12
Time Settings	13
USB Storage Device/HDD Playback	14
Internet Radio	16
Spotify	17
Listening to the FM/DAB Radio	18
BLUETOOTH®	21
AirPlay®	22
Playing Audio from an External Device	23
Music Server	25
Using the Alarm to Start Play	27
Entering Text, Adjusting Sound Quality, etc.	28
Advanced Settings	29
Firmware Update	32
Troubleshooting	34
General Specifications	37
License and Trademark Information	38

What's in the box



Main unit (1)



Remote controller (RC-952S) (1)
Batteries (AAA/R03) (2)



DAB/FM wire antenna (1)

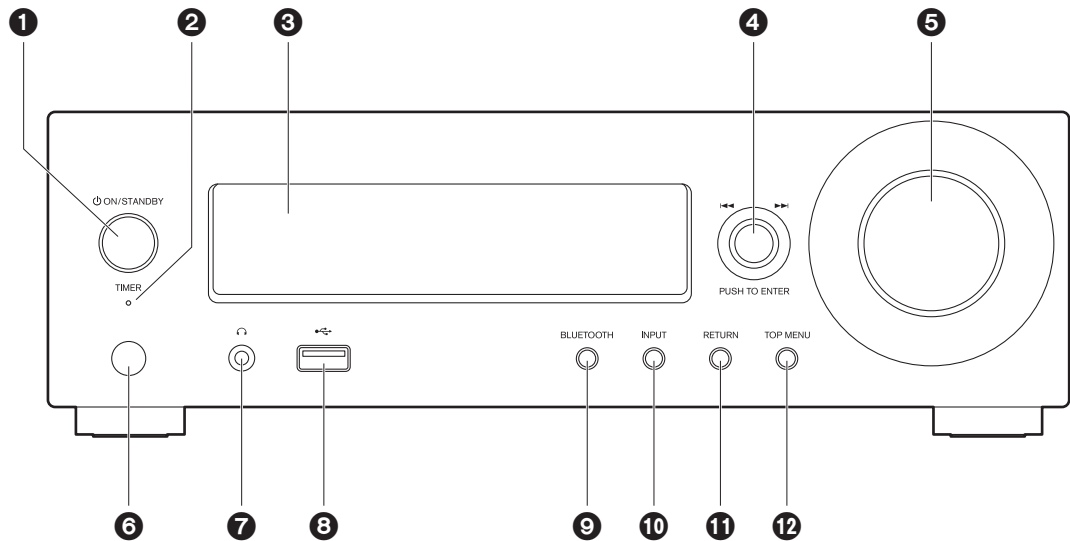


Power cord (1)



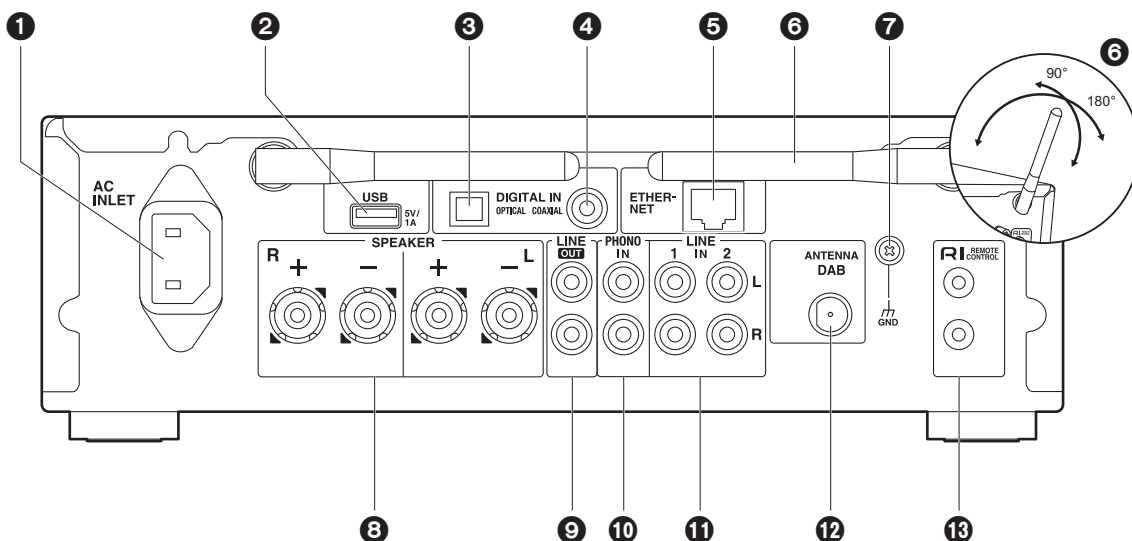
- The power cord must be connected only after all other cable connections are completed.
- Connect speakers with 4 Ω to 16 Ω impedance.
- We will not accept responsibility for damage arising from the connection of equipment manufactured by other companies.
- Functionality may be introduced by firmware updates and service providers may cease services, meaning that some network services and content may become unavailable in the future.
- Specifications and appearance are subject to change without prior notice.

Front Panel



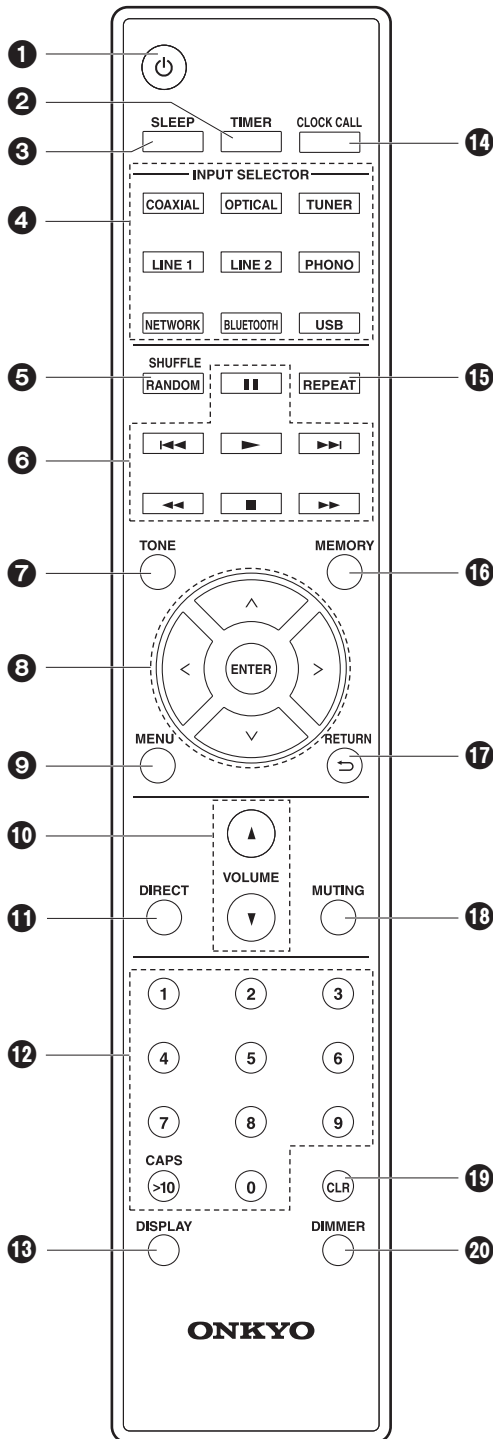
1. **ON/STANDBY button** : Turns the unit on or to standby mode.
2. **TIMER indicator** : This lights when the alarm is set.
3. **Display** (→P9)
4. **PUSH TO ENTER dial** (◀◀/▶▶) :
When playing, turn left or right to select the folder or file, then press to confirm.
While the menu is displayed, turn the dial to select items and press to confirm the settings.
 - Depending on the input, the operation may not start.
5. **VOLUME dial** : Adjust the volume. Adjust between 0 and 50.
6. **Remote control sensor**
7. **Headphone jack** : Connect stereo headphones with a mini plug.
8. **USB port** : Connect a USB storage device or HDD (hard disk drive) to play music files. You can also supply power (maximum 5 V/0.5 A) to USB devices with a USB cable.
 - When connecting a HDD that requires more than 5 V/0.5 A, connect to the USB port on the rear of the unit (maximum 5 V/1 A).
9. **BLUETOOTH button** : Switch to BLUETOOTH input.
10. **INPUT button** : Switches the input to be played.
11. **RETURN button** : Returns the display to the previous state.
12. **TOP MENU button** : Displays the settings menu.

Rear Panel

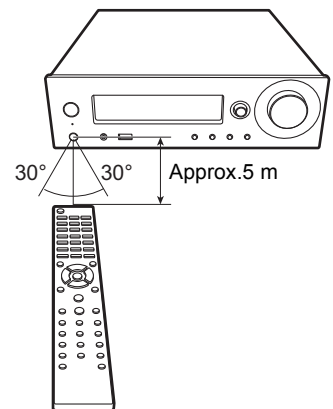


1. AC INLET : Connect the supplied power cord.
2. USB port: Connect a USB storage device or HDD (hard disk drive) to play music files. You can also supply power (maximum 5 V/1 A) to USB devices with a USB cable.
3. DIGITAL IN OPTICAL terminal : Input digital audio signals from an external device, such as a TV or CD player, with a digital optical cable.
4. DIGITAL IN COAXIAL terminal : Input digital audio signals from an external device, such as a TV or CD player, with a digital coaxial cable.
5. ETHERNET port : Connect to the network with an Ethernet cable.
6. Wireless antenna : Used for Wi-Fi connection or when using a BLUETOOTH enabled device. Adjust their angles according to the connection status.
7. GND terminal : Connect if the turntable connected to the PHONO IN jack has a ground wire.
8. SPEAKER terminals : Connect speakers with speaker cables.
9. LINE OUT jacks : Connect a recording device such as a cassette tape deck with an analog audio cable. You can also connect a subwoofer with built-in amplifier with a subwoofer cable. (→P10, 31 "LINE OUT/SW")
10. PHONO IN jacks : Connect a turntable (MM cartridge).
11. LINE IN jacks : Input audio signals from an external device, such as a TV or CD player, with an analog audio cable.
12. ANTENNA DAB terminal : Connect the supplied DAB/ FM wire antenna.
13. RI REMOTE CONTROL jacks : Connect an Onkyo product with an RI jack using an RI cable to synchronize with this unit. (→P24)

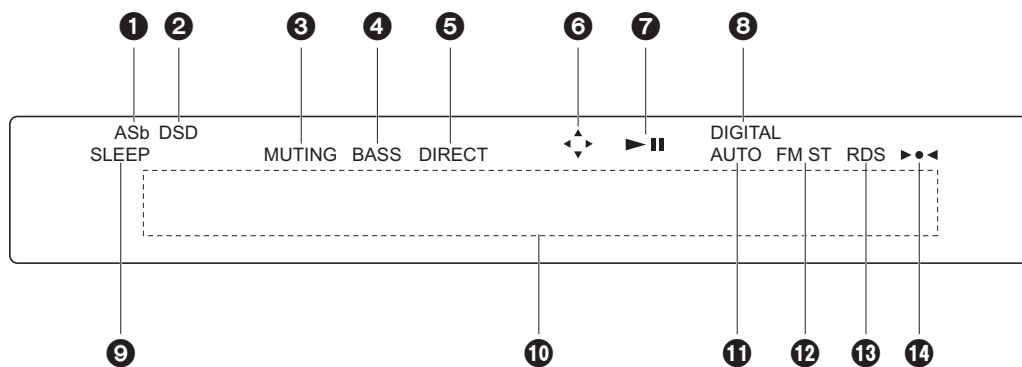
Remote Controller



1. button : Turns the unit on or into standby mode.
2. TIMER button : Used to set the alarm.
3. SLEEP button : Set the sleep timer. When the time set (30, 60, or 90 minutes) has elapsed, the unit switches to standby. If SLEEP button is pressed after setting, the time remaining until sleep is displayed.
4. INPUT SELECTOR button : Switches the input to be played.
5. SHUFFLE/RANDOM button : Set shuffle play.
6. Play buttons:
 - : Start play.
 - : Pause play.
 - : Stop playback.
 - : Move to the track before the one being played.
 - : Move to the next track.
 - and are not used.
 - Depending on the input, the operation may not start.
7. TONE button : Adjust the sound quality.
8. Cursors, ENTER button : Select the item with the cursors and press ENTER to confirm.
9. MENU button : Displays the setup menu.
10. VOLUME button : Adjust the volume. Adjust between 0 and 50.
11. DIRECT button : This enables the Direct function that shuts down processing that affects sound quality so sound closer to the original is reproduced. Press again to cancel.
12. Number buttons : Use to directly input the frequency of stations when tuning.
13. DISPLAY button : Switches the information on the display.
14. CLOCK CALL button : Used to set the time.
15. REPEAT button : Set repeat play.
16. MEMORY button : Used to register favorite radio stations.
17. RETURN () button : Returns the display to the previous state.
18. MUTING button : Temporarily mutes audio. Press again to cancel muting.
19. CLR button : Used when entering text, etc.
20. DIMMER button : Adjust the brightness of the display in three steps.

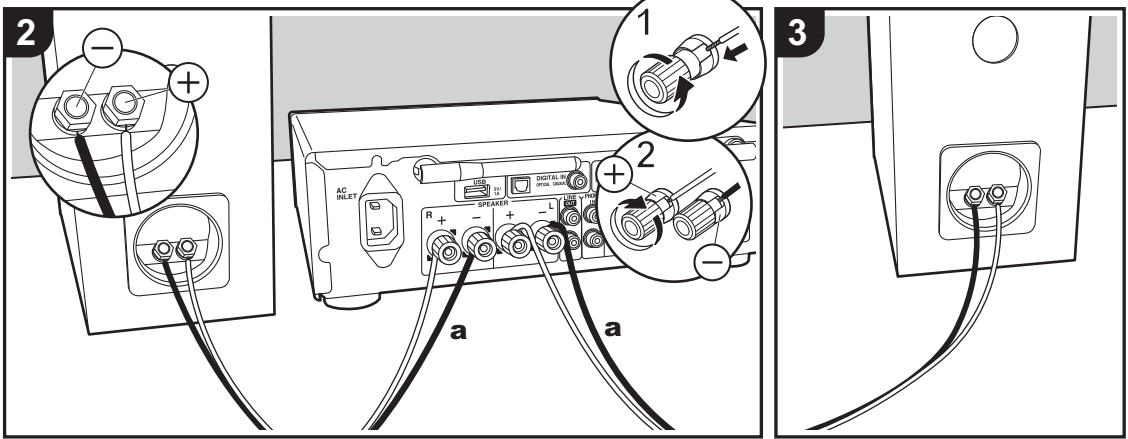
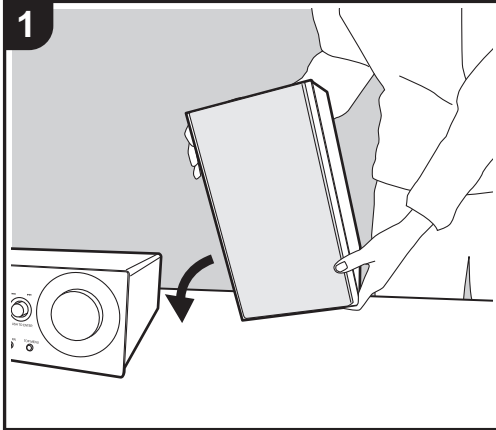


Display



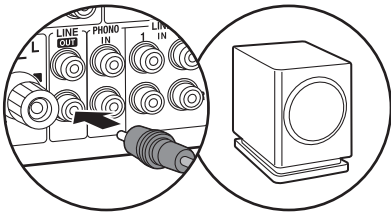
1. Lights when "Auto Standby" (➔P29) is set to "On".
2. Lights when the audio signal being input is DSD.
3. Flashes when muting is on.
4. Lights when "PM Bass" (➔P28) is "On" to emphasized the bass.
5. Lights when the Direct function, which shuts down processing that affects sound quality so sound closer to the original is reproduced, is enabled.
6. Lights when remote controller cursor operations are possible in screens showing list of tracks, for example.
7. Displays the play status.
8. Lights when digital signals are input and the digital input is selected.
9. Lights when the sleep timer is set.
10. Message display : Displays information about tracks and menus.
 - Characters that cannot be displayed on this unit are replaced with asterisks (*).
 - The following icons are displayed.
 - ☐ : Folder
 - 🎵 : Track title
 - ▶ : Playing
 - ⏸ : Paused
 - 👤 : Artist
 - 📀 : Album
 - 🔁 : 1-track repeat
 - 📁 : Repeat within a folder
 - 🔀 : Shuffle
11. Lights when automatic tuning is selected as the method for tuning radio stations.
12. Lights when FM stereo is being received.
13. Lights when RDS information is being received.
14. Lights when tuned into a radio station.

Connect the Speakers

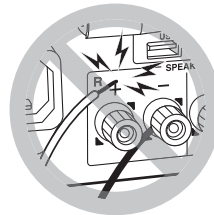


a Speaker cable

Refer to the illustration to connect your own speakers. After inserting the speaker cables, tighten the terminals firmly by turning to the right.

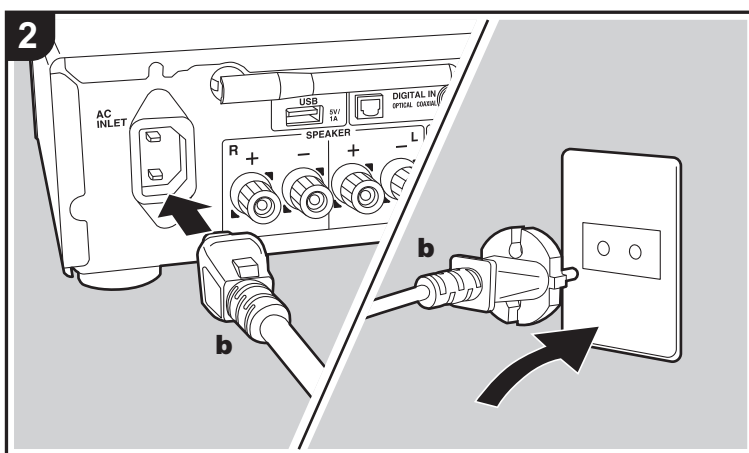
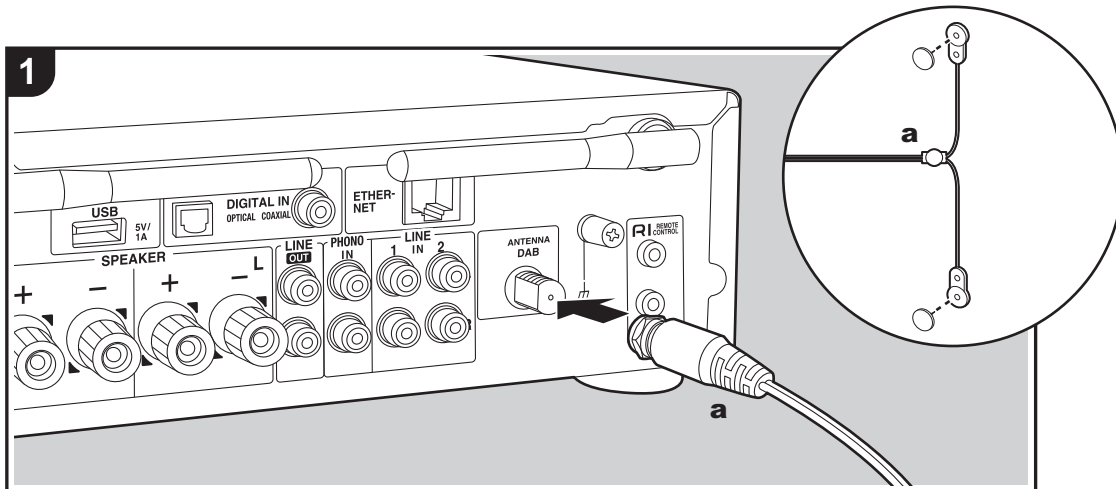


You can also connect a subwoofer with a built-in amplifier to boost bass playback even more. When connecting, make sure you connect to the Rch of the LINE OUT jacks using a subwoofer cable. Settings need to be changed when connecting a subwoofer. (→P31 "LINE OUT/SW")



Also make sure the exposed wires of the speakers do not stick out of the speaker terminals when connecting. If the exposed wires of the speakers touch the rear panel or the + and - wires touch each other, the protection circuit may be activated and the power may turn off.

Connecting the Antennas and Power Cord, etc.



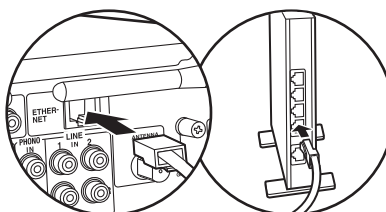
a DAB/FM wire antenna, **b** Power cord

Antenna Hookup

Move the antenna around while playing the radio to find the position with the best reception.

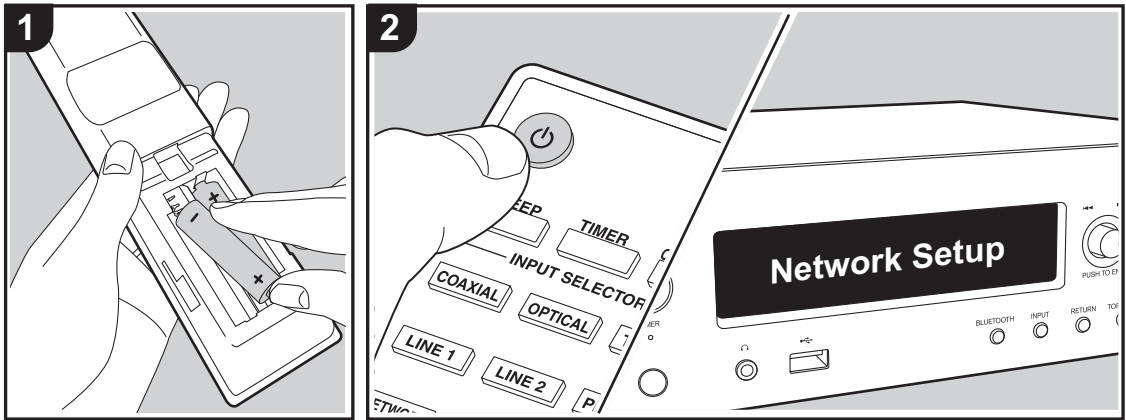
Power Cord Hookup

Connect the power cord to the power outlet after completing all other connections.



To connect to the network with a Ethernet cable, use the ETHERNET jack. When using Wi-Fi connection, make settings in initial settings (→ P12). You can enjoy features such as internet radio and AirPlay by connecting to the network.

Power On & Initial Setup



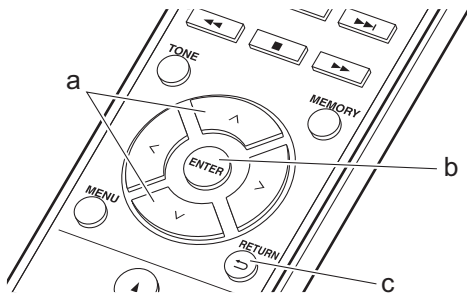
Wi-Fi connection settings

When you first turn the power on, the initial setup screen is displayed automatically, allowing you to easily make Wi-Fi connection settings.

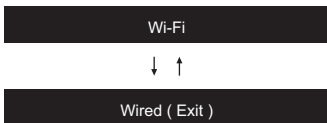


To set, select the item with the cursors (a) on the remote controller and press ENTER (b) to confirm. To return to the previous display, press \leftarrow (c).

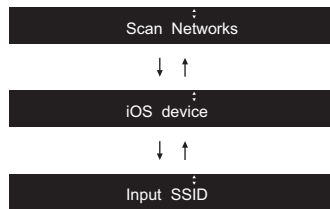
- Turn PUSH TO ENTER on the main unit to the left and right to select the item, then press the dial to confirm.
- If you want to use the unit without setting up a network, or want to set up the network at a later time, press \leftarrow (c) on the remote controller while "Network Setup" is displayed.



1. Press ENTER (b) when "Network Setup" is displayed.
2. To make Wi-Fi settings, select "Wi-Fi". If you have connected with an ethernet cable, select "Wired(Exit)" with \wedge/\vee (a) on the remote controller and press ENTER (b).



3. If you selected "Wi-Fi", select the setting method with \wedge/\vee (a) on the remote controller and press ENTER (b).

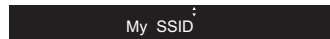


- To redo the initial settings, press MENU on the remote controller, select "Wi-Fi" in "Network" - "Connection", then select "Wi-Fi Setup".

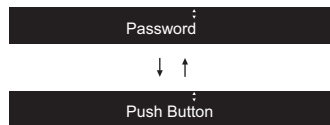
■ Scan Networks

From the list of SSID for access points such as wireless LAN routers, select the required SSID and make the settings.

1. Select the SSID of the access point you want to connect with \wedge/\vee (a) on the remote controller and press ENTER (b).



2. Select "Password" or "Push Button" with \wedge/\vee (a) on the remote controller and press ENTER (b). If the access point has an automatic connection button, by selecting "Push Button" you can connect without entering a password.



3. If you select "Password", enter the password of the access point. For details on how to enter text, refer to "Entering text" (➔P28).

If you select "Push Button", then after pressing and holding the automatic setting button on the access point for the required amount of time, press ENTER (b) on the remote controller.

4. After "Check Network" is displayed, the information of the display switches when the Wi-Fi settings are complete.
 - If "Retry" appears on the display, press ENTER (b) to retry the settings.

■ iOS device

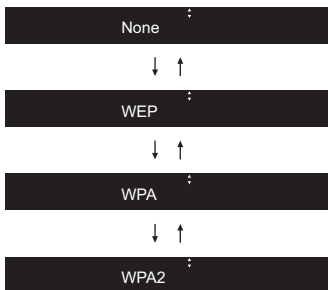
Set by sharing the iOS device's Wi-Fi settings with this unit.

1. Connect the iOS device by Wi-Fi.
2. Select this device in the "SET UP NEW AIRPLAY SPEAKER..." item on the screen of the iOS device and select "Next".
 - This unit is displayed as "Onkyo R-N855 XXXXXX".
3. After "Check Network" is displayed on this unit, when the Wi-Fi settings are complete, the display changes. Select "Done" on the screen of the iOS device.

■ Input SSID

Set by entering the SSID of the access point you want to connect.

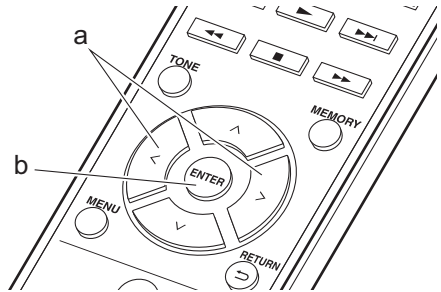
1. Enter the SSID. For details on how to enter text, refer to "Entering text" (➔P28).
2. Select the authentication method with \wedge/\vee (a) on the remote controller and press ENTER (b).



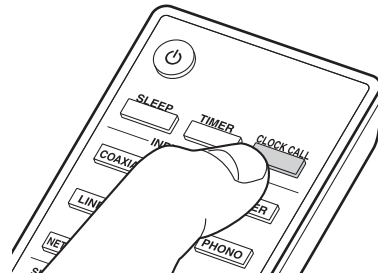
- If you select "None", proceed to step 3. If you select "WEP", "WPA", or "WPA2", enter the password.
3. After "Check Network" is displayed, the information of the display switches when the Wi-Fi settings are complete.
 - If "Retry" appears on the display, press ENTER (b) to retry the settings.

Time Settings

By setting the time, you can use the alarm to start play (➔P27).



1. Press CLOCK CALL.



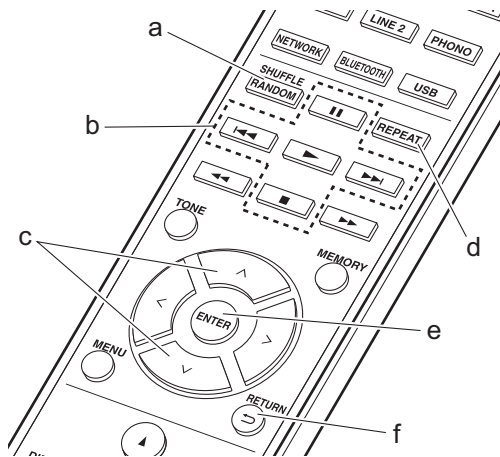
2. Press ENTER (b).
3. Set the day of the week with $</>$ (a), then press ENTER (b).
4. Use $</>$ (a) to select either "24H" (24-hour display) or "12H" (12-hour display) and press ENTER (b).
5. Set the time with $</>$ (a), then press ENTER (b).
6. Set the minutes with $</>$ (a), then press ENTER (b). Setting ends automatically after a short time.
 - Once you have completed the setting, the set time can be displayed for about 10 seconds by pressing CLOCK CALL.

USB Storage Device/HDD Playback

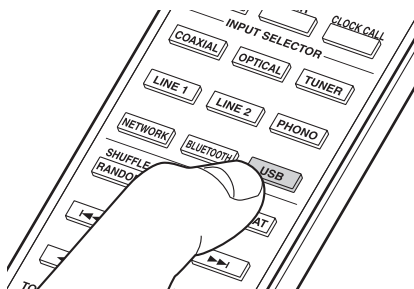
Basic operations

You can play music files by connecting a USB storage device or HDD (hard disk drive) to the USB port on the front or rear of the unit.

- The USB port on the front supports a maximum 5 V/ 0.5 A power supply. If the HDD requires more than this, connect to the USB port on the rear of the unit (maximum 5 V/1 A).

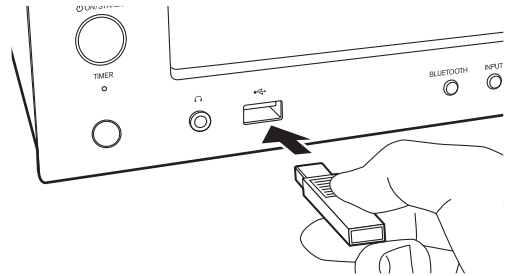


1. Turn the unit on.
2. Press USB to select "USB (F)" (USB port on the front panel) or "USB (R)" (USB port on the rear panel).

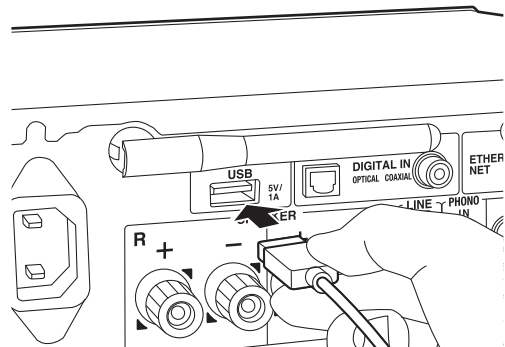


USB (F)

3. Plug your USB storage device or HDD into the USB port on the front or rear.



OR



4. Press ENTER (e) after reading is complete.
5. Select the folder or music file with ^/∨ (c) on the remote controller and press ENTER (e). To return to the previous display, press ↵ (f).
6. Use play buttons (b) to stop play or choose tracks to play.
 - The display of album name and artist name is supported with MP3/WMA/Apple Lossless/FLAC/AAC/DSD (DSF only) format music files.
 - Characters that cannot be displayed by this unit appear as "*".
 - The USB port of this unit conforms with the USB 2.0 standard. The transfer speed may be insufficient for some content you play, which may cause some interruption in sound.

Repeat play

1. Repeatedly press REPEAT (d) during play to display
 - ↑ ↻ or ↻ : Repeat play of the selected individual track.
 - ↻ : Repeat play of all tracks within a folder.
 To cancel repeat play, press REPEAT (d) several times until the icons disappear.

Shuffle Play

1. Press SHUFFLE/RANDOM (a) during play to display
 - ⌘ : Play tracks in a folder randomly.
 To cancel shuffle play, press SHUFFLE/RANDOM (a) to disappear the icon.

USB Storage / HDD Device Requirements

- Note that operation is not guaranteed with all USB storage devices or HDD.
- This unit can use USB storage devices that comply with the USB mass storage device class standard. (However, there are still devices that cannot be played by this unit even if they comply with the USB mass storage class standard.)
- The unit is also compatible with USB storage devices using the FAT16 or FAT32 file system formats. Other formats such as exFAT, NTFS, and HFS cannot be played by this unit.
- If the USB storage device has been partitioned, each section will be treated as an independent device.
- Up to 20,000 tracks per folder can be displayed, and folders may be nested up to 16 levels deep.
- USB hubs and USB storage devices with hub functions are not supported. Do not connect these devices to the unit.
- USB storage devices with security function are not supported on this unit.
- If the USB storage device or HDD comes with an AC adapter, we recommend that you use its AC adapter to power it.
- Media inserted to the USB card reader may not be available in this function. Furthermore, depending on the USB storage device, proper reading of the contents may not be possible.
- We accept no responsibility whatsoever for the loss or damage to data stored on a USB storage device when that device is used with this unit. We recommend that you back up your important music files beforehand.

Supported Audio Formats

This unit supports the following music file formats. Note that sound files that are protected by copyright cannot be played on this unit.

MP3 (.mp3/.MP3) :

- Supported formats : MPEG-1/MPEG-2 Audio Layer-3
- Supported sampling rates : 44.1 kHz, 48 kHz
- Supported bitrates : Between 8 kbps and 320 kbps and VBR.

WMA (.wma/.WMA) :

- Supported sampling rates : 44.1 kHz, 48 kHz
- Supported bitrates : 5 kbps and 320 kbps and VBR.
- WMA Pro/Voice/WMA Lossless formats are not supported

WAV (.wav/.WAV) :

WAV files include uncompressed PCM digital audio.

- Supported sampling rates : 44.1 kHz, 48 kHz, 88.2 kHz, 96 kHz, 176.4 kHz, 192 kHz
- Quantization bit : 8 bit, 16 bit, 24 bit

AIFF (.aiff/.aif/.aifc/.afc/.AIFF/.AIF/.AIFC/.AFC) :

AIFF files include uncompressed PCM digital audio.

- Supported sampling rates : 44.1 kHz, 48 kHz, 88.2 kHz, 96 kHz, 176.4 kHz, 192 kHz
- Quantization bit : 8 bit, 16 bit, 24 bit

AAC (.aac/.m4a/.mp4/.3gp/.3g2/.AAC/.M4A/.MP4/.3GP/.3G2) :

- Supported formats : MPEG-2/MPEG-4 Audio
- Supported sampling rates : 44.1 kHz, 48 kHz, 88.2 kHz, 96 kHz
- Supported bitrates : Between 8 kbps and 320 kbps and VBR.

FLAC (.flac/.FLAC) :

- Supported sampling rates : 44.1 kHz, 48 kHz, 88.2 kHz, 96 kHz, 176.4 kHz, 192 kHz
- Quantization bit : 8 bit, 16 bit, 24 bit

Apple Lossless (.m4a/.mp4/.M4A/.MP4) :

- Supported sampling rates : 44.1 kHz, 48 kHz, 88.2 kHz, 96 kHz, 176.4 kHz, 192 kHz
- Quantization bit : 16 bit, 24 bit

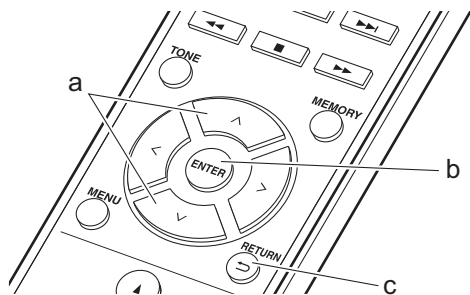
DSD (.dsf/.dff/.DSF/.DFF) :

- Supported formats : DSF/DSDIFF
- Supported sampling rates : 2.8 MHz, 5.6 MHz, 11.2 MHz

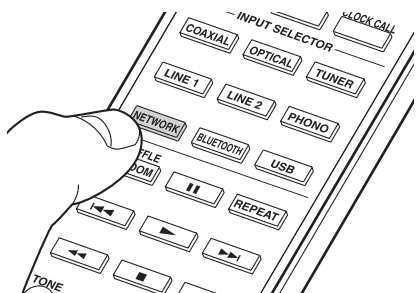
Internet Radio

Basic operations

When this unit is connected to a network, you can listen to TuneIn or other preregistered Internet radio services.



1. Turn the unit on.
2. Press NETWORK.



3. Select "TuneIn Radio" with \wedge/\vee (a) on the remote controller and press ENTER (b).



- If "Connection Error." is displayed, check whether the network is properly connected.
4. Select stations with \wedge/\vee (a) on the remote controller and press ENTER (b). To return to the previous display, press \leftarrow (c).

The TuneIn My Presets function :

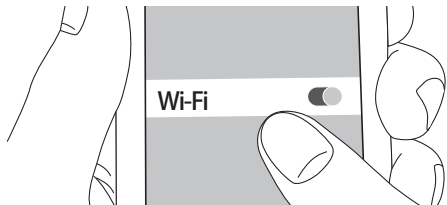
You can register a station you have played as a favorite.

1. Press ENTER (b) while playing TuneIn.
2. Select "Add to My Presets" with \wedge/\vee (a) on the remote controller and press ENTER (b).
3. To play a favorite, select a registered station in "My Presets", displayed first when "TuneIn Radio" selected and press ENTER (b). To delete favorites, press ENTER (b) during play, select "Remove from My Presets" and press ENTER (b).

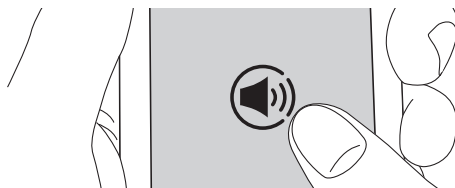
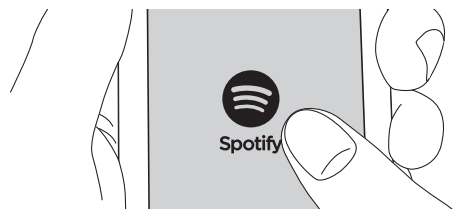
Spotify

Spotify Connect play is possible by connecting this unit to the same network as a smartphone or tablet. To enable Spotify Connect, install the Spotify application on your smartphone or tablet and create a Spotify premium account.

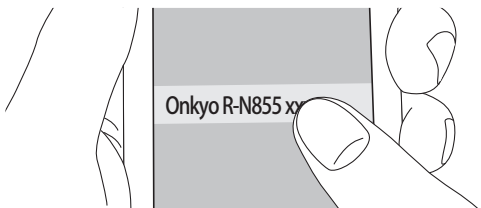
1. Connect the smartphone to the network that this unit is connected to.



2. Click the Connect icon in the track play screen of the Spotify app.

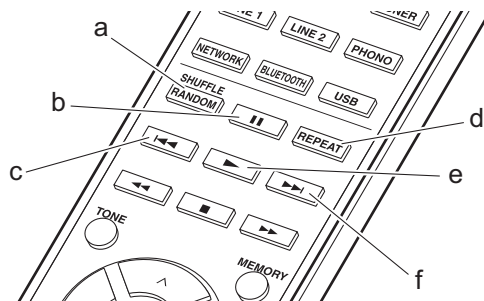


3. Select this unit.



4. This unit turns on automatically and the input selector changes to NET and streaming of Spotify starts.
 - This unit is displayed as "Onkyo R-N855 XXXXXX".
 - If "Option" - "PWR Setting" - "NET Stby" is set to "Off" in the setup menu, manually turn the unit on and then press NETWORK on the remote controller.
 - Refer to the following for Spotify settings:
www.spotify.com/connect/
 - The Spotify software is subject to third party licenses found here:
www.spotify.com/connect/third-party-licenses

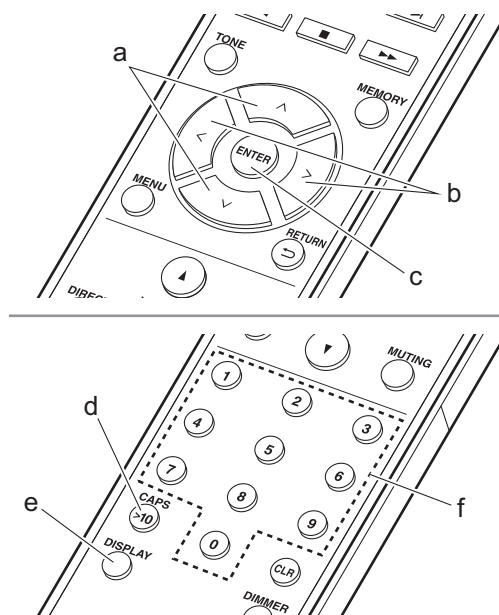
The following remote controller operations are also possible.



- (a) Start shuffle play.
- (b) Pause play.
- (c) Play the previous track.
- (d) Start repeat play.
- (e) Start play.
- (f) Play the next track.

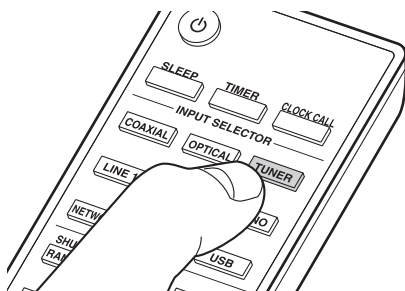
Listening to the FM/DAB Radio

Listening to FM Radio



Tuning Automatically

1. Turn the unit on.
2. Repeatedly press TUNER to switch input to FM.



FM 87.50MHz

3. When you press \wedge/\vee (a) on the remote controller, automatic tuning starts, and searching stops when a station is found. "FM ST" indicator on the display lights when FM stereo station is being received.

When FM broadcasts are difficult to receive : Perform the procedure for "Tuning Manually". If you tune manually, the reception for FM broadcasts will be monaural rather than stereo, irrespective of the sensitivity of the reception.

Tuning Manually

1. Turn the unit on.
2. Repeatedly press TUNER to switch input to FM.

FM 87.50MHz

3. Press ENTER (c) on the remote controller so that the "AUTO" indicator on the display goes off.

4. Select the station you want to listen to while pressing \wedge/\vee (a) on the remote controller.
 - The frequency changes by 1 step each time you press the button. The frequency changes continuously if the button is held down and stops when the button is released. Tune by looking at the display.
 - After pressing PUSH TO ENTER on the main unit until the frequency display flashes, you can turn the dial left or right to tune stations.

Directly inputting the frequency

It allows you to directly enter the frequency of the radio station you want to listen to.

1. Turn the unit on.
2. Repeatedly press TUNER to switch input to FM.
3. Press CAPS (d) on the remote controller.
4. Press the number buttons (f) on the remote controller to enter the frequency of the radio station within 8 seconds.
 - To enter 87.50, for example, press 8, 7, 5, 0. If you enter the wrong number, press CAPS (d) and re-enter.

Using RDS

RDS stands for Radio Data System and is a method of transmitting data in FM radio signals. In regions using RDS, the radio station name is displayed when you tune into a radio station broadcasting program information. When you press DISPLAY (e) on the remote controller in this state, you can use the following functions.

Displaying text information (Radio Text):

1. While the name of the station is being displayed on the display, press DISPLAY (e) on the remote controller once.

Radio Text (RT) broadcast by the station is displayed scrolling across the display. "No Text Data" is displayed when no text information is available.

 - Unusual characters may be displayed when the unit receives unsupported characters. However, this is not a malfunction. Also, if the signal from a station is weak, information may not be displayed.

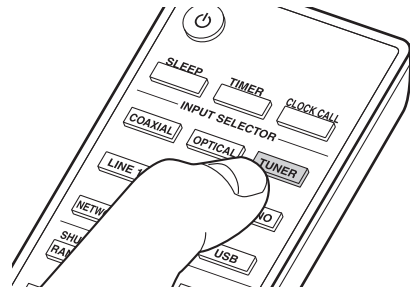
Search for stations by Program Type:

1. While the name of the station is being displayed on the display, press DISPLAY (e) on the remote controller twice.
2. Press \langle / \rangle (b) on the remote controller to select the Program Type you want to find, then press ENTER (c) to start the search.

The Program Types displayed are as follows:

 - None
 - News (News reports)
 - Affairs (Current affairs)
 - Info (Information)
 - Sport
 - Educate (Education)
 - Drama
 - Culture
 - Science (Science and technology)
 - Varied
 - Pop M (Pop music)
 - Rock M (Rock music)
 - Easy M (Middle of the road music)
 - Light M (Light classics)

- Classics (Serious classics)
- Other M (Other music)
- Weather
- Finance
- Children (Children's programmes)
- Social (Social affairs)
- Religion
- Phone In
- Travel
- Leisure
- Jazz (Jazz music)
- Country (Country music)
- Nation M (National music)
- Oldies (Oldies music)
- Folk M (Folk music)
- Document (Documentary)



DAB

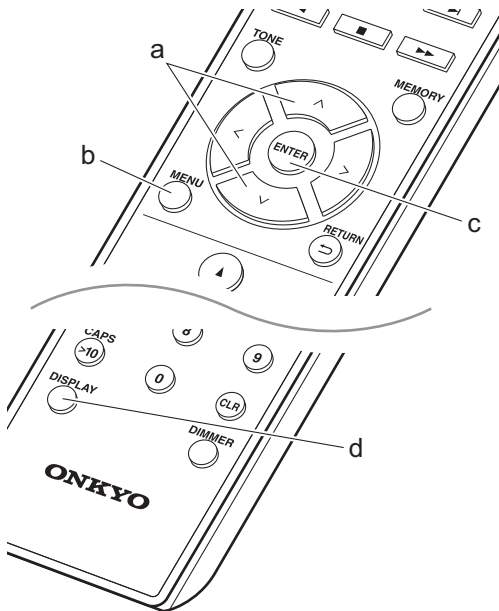
- The information displayed may sometimes not match the content being broadcast by the station.
3. When a station is found, the station flashes on the display. Press ENTER (c) while this is happening to start receiving that station. If you don't press ENTER (c), the unit continues to search for another station.
 - If no stations are found, the message "Not Found" is displayed.
 - Unusual characters may be displayed when the unit receives unsupported characters. However, this is not a malfunction. Also, if the signal from a station is weak, information may not be displayed.

- The very first time you select DAB, the Auto Tuning function automatically scans the DAB Band 3 for the multiplexes (i.e., stations) available in your area.

Scan 100%

- Once the scanning process is complete, the first station that was detected is selected.
 - If a new DAB station is introduced, or you move to a new area, press MENU (b) on the remote controller, then use "DAB Scan" in "Option" - "Tuner Setting".
3. Press ^/∨ (a) on the remote controller to select the desired radio station.

Listening to DAB Digital Radio



Tuning

1. Turn the unit on.
2. Repeatedly press TUNER to switch input to DAB.

Changing the order stations are displayed

You can sort the available stations alphabetically or by multiplex.

1. Press ENTER (c) repeatedly to set the method for sorting the display order from the following.

Alphabet (default setting) : Sort stations alphabetically.

Multiplex : Sort stations by multiplex.

Displaying DAB Radio Information

1. Press the DISPLAY button (d) repeatedly to display more information about the selected DAB station.

Broadcast Information

DLS (Dynamic Label Segment) : When tuned to a station that's broadcasting DLS text data, the text will scroll across the display.

Program Type : Displays the type of program.

Bit Rate and Audio Mode : Displays the station's bit rate and audio mode (stereo, mono).

Signal Quality : Displays the signal quality.

0 - 59: Poor reception

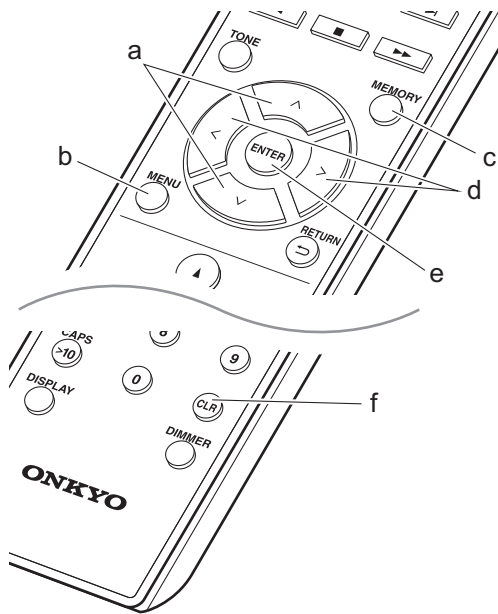
60 - 79: Good reception

80 - 100: Excellent reception

Multiplex Name : Displays the name of the current multiplex.

Multiplex Number and Frequency : Displays the number and frequency of the current multiplex.

Registering a station



To give a name to a registered station (FM stations only) :

1. Press TUNER.
2. Press </> (d) on the remote controller to select a preset number.
3. Press MENU (b) on the remote controller.
4. Press ^/∨ (a) on the remote controller to select "Option" - "Tuner Setting" - "NameEdit" and press ENTER (e).
5. Enter a name for the station. For details on how to enter text, refer to "Entering text" (➔P28).

You can register a maximum of 40 radio stations, the sum of FM stations and DAB stations.

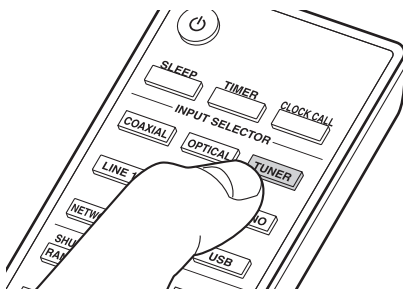
1. Tune into the radio station you want to register.
2. Press MEMORY (c) on the remote controller so that the preset number on the display flashes.



3. While the preset number is flashing (about 8 seconds), repeatedly press </> (d) on the remote controller to select a number between 1 and 40.
4. Press MEMORY (c) on the remote controller again to register the station. When registered, the preset number stops flashing.

Selecting registered stations

1. Press TUNER.



2. Press </> (d) on the remote controller to select a preset number.

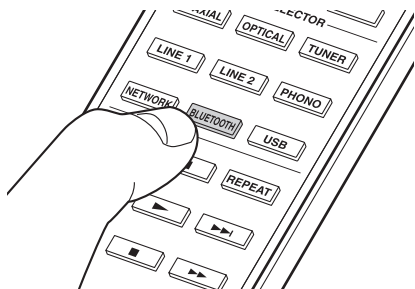
To delete a registered station :

1. Press TUNER.
2. Press </> (d) on the remote controller to select the preset number you want to delete.
3. Press CLR (f) on the remote controller to delete the preset number.

BLUETOOTH®

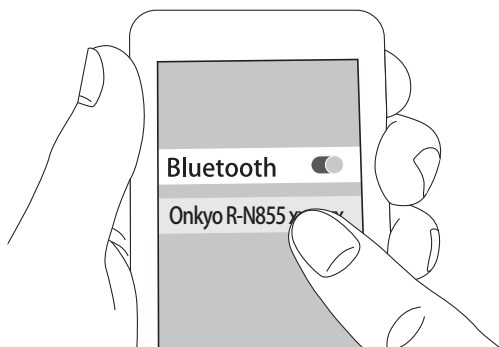
Pairing

1. Turn the unit on.
2. When you press BLUETOOTH, "Now Pairing..." is displayed on the display, and the pairing mode is enabled.



Now Pairing...

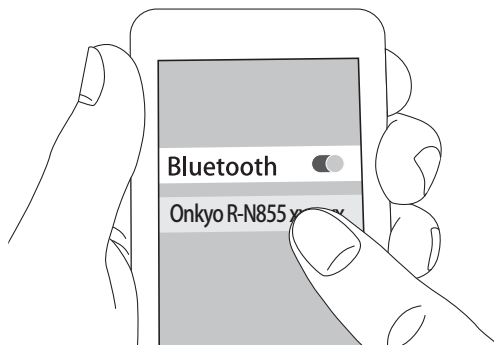
3. Enable (turn on) the BLUETOOTH function of the BLUETOOTH enabled device, then select this unit from amongst the devices displayed. If a password is requested, enter "0000".



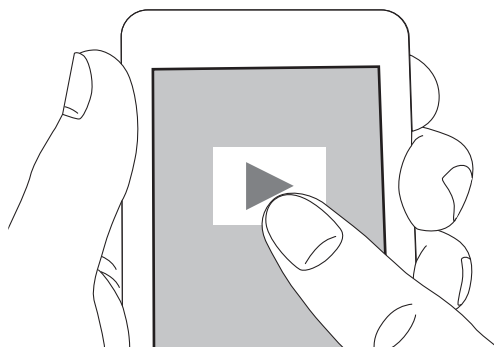
4. "Now Pairing..." on the display changes to the name of the BLUETOOTH enabled device.
- This unit is displayed as "Onkyo R-N855 XXXXX".
 - To connect another BLUETOOTH enabled device, press and hold BLUETOOTH until "Now Pairing..." is displayed, then perform step 3 above. This unit can store the data of up to eight paired devices.
 - The coverage area is 15 meters. Note that connection is not always guaranteed with all BLUETOOTH enabled devices.

Playing back

1. Turn the unit on.
2. Perform the connection procedure on the BLUETOOTH enabled device.



3. The input selector on this unit automatically switches to "BLUETOOTH".
4. Play the music files. Increase the volume of the BLUETOOTH enabled device to an appropriate level.

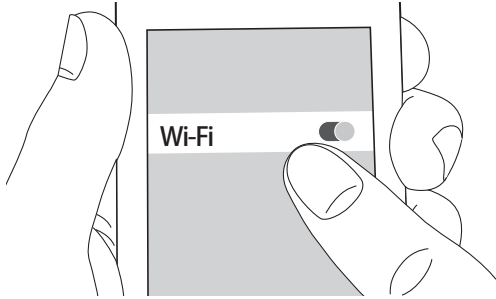



- Due to the characteristics of BLUETOOTH wireless technology, the sound produced on this unit may slightly be behind the sound played on the BLUETOOTH enabled device.

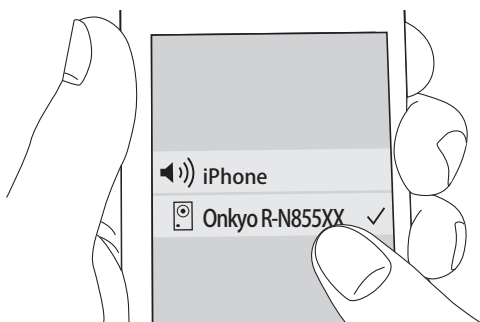
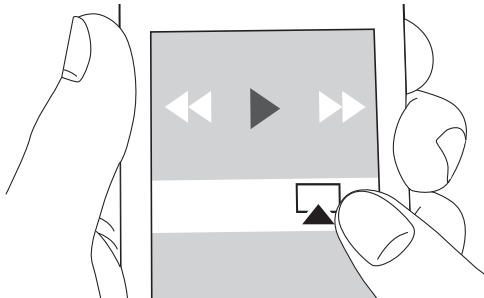
Basic operations

You can wirelessly enjoy the music files on an iPhone®, iPod touch®, or iPad® connected to the same access point as this unit. Update the OS version on your iOS device to the latest version.

1. Turn the unit on.
2. Connect the iOS device to the same network as this unit.

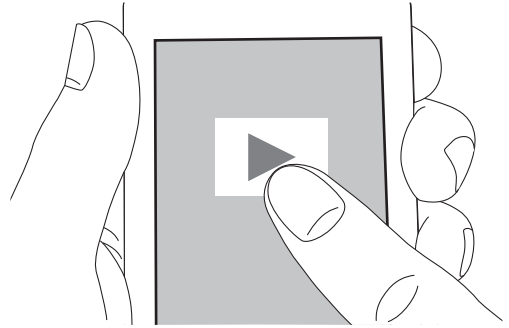


3. Tap the AirPlay icon  in the control center of the iOS device and select this unit from the list of devices displayed, and tap "Done".




- This unit is displayed as "Onkyo R-N855 XXXXXX".
- If an "AirPlay PW" has been set on this unit, enter the password you set.

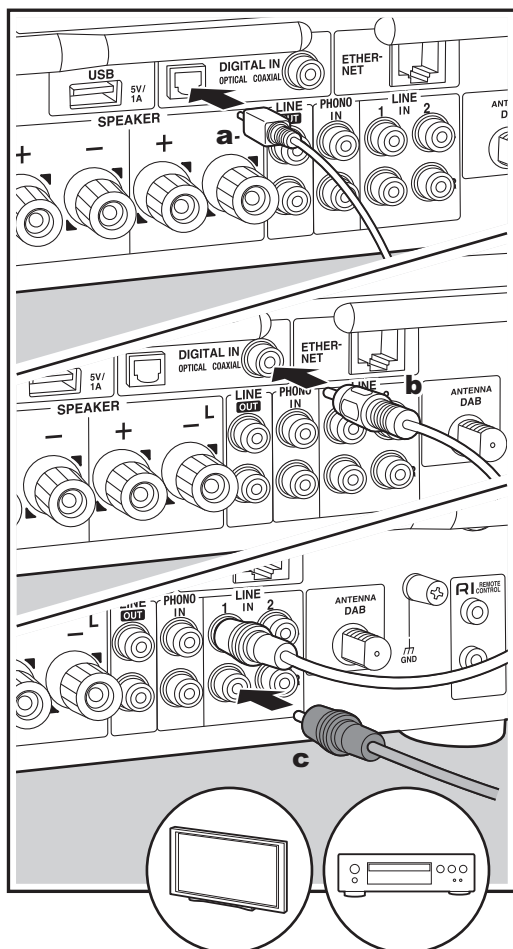
4. Play the music files on the iOS device.



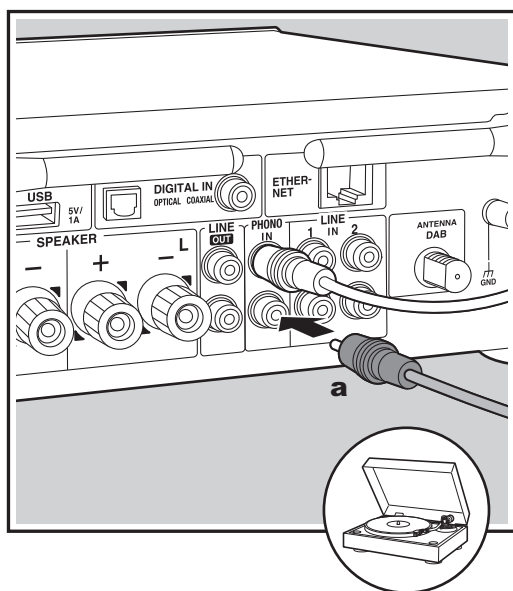
- In the setup menu displayed by pressing MENU on the remote controller, when "Option" - "PWR Setting" - "NET Stby" is set to "On", when play of AirPlay starts, this unit turns on automatically and play starts.
- Due to the characteristics of AirPlay wireless technology, the sound produced on this unit may slightly be behind the sound played on the AirPlay-enabled device.
- SHUFFLE/RANDOM and REPEAT on the remote controller does not work. Operate from the iOS device.

You can also play the music files on a computer with iTunes (Ver. 10.2.2 or later). Make sure this unit and the computer are connected to the same network, click the AirPlay icon  in iTunes, select this unit from the list of devices displayed, and start play of a music file.

Playing Audio from an External Device



a Digital optical cable, **b** Digital coaxial cable, **c** Analog audio cable

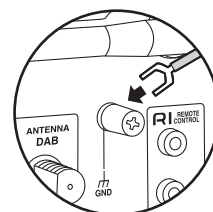


a Analog audio cable

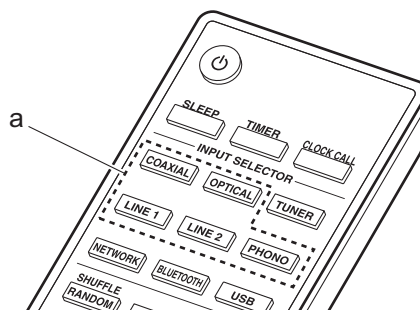
Connections

You can play the audio from external devices such as TVs, CD players, and turntables with MM cartridges through this unit. Connect as follows according to the output jacks on the external devices you are connecting. When using a digital optical cable, connect to the DIGITAL IN OPTICAL terminal on this unit. When using a digital coaxial cable, connect to the DIGITAL IN COAXIAL terminal on this unit. When connecting with an analog audio cable, connect the turntable to the PHONO IN jack and other external devices is to the LINE IN jacks on this unit.

- If the connected turntable has a built-in audio equalizer, connect it to the LINE IN jack.
- If the turntable has a ground wire, connect it to the GND terminal.



Playing Back



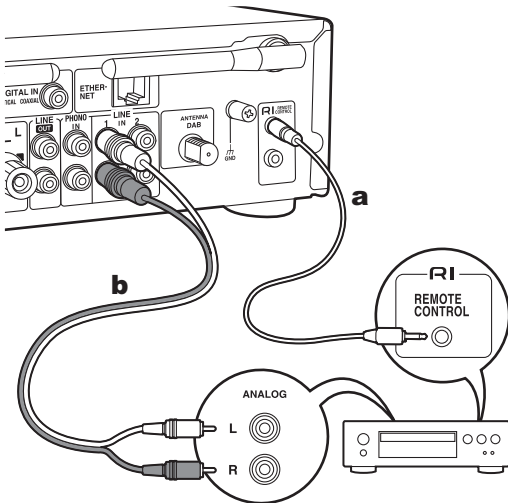
1. Turn the unit on.
2. Press OPTICAL, COAXIAL, LINE 1, LINE 2, or PHONO (a) to match the terminal you have connected the device to switch the input of this unit.

OPTICAL

3. Start play on the player.
 - When connected by a digital optical cable or a digital coaxial cable, this unit supports linear PCM signals of up to 192 kHz/24 bits for input.

Connecting with Onkyo RI Components

By connecting an Onkyo component with RI jack to the unit by using an RI cable and an analog audio cable, you can link the unit's power and input selection and enable operation with this unit's remote controller. For details, refer to the instruction manual of the component with the RI jack.



a RI cable, **b** Analog audio cable

- If there are two RI connectors, the function of the two connectors is the same. Both connectors can be used.
- Connection to RI connectors only does not work as the system. Connect also an analog audio cable correctly.
- Some components may not support all RI functions.

Music Server

It is possible to stream music files stored on PCs or NAS devices connected to the same network as this unit. The network servers this unit is compatible with are those PCs with players installed that have the server functionality of Windows Media® Player 11 or 12, or NAS that are compatible with home network functionality. You may need to make some settings in advance to use Windows Media® Player 11 or 12. Note that only music files registered in the library of Windows Media® Player can be played.

Configuring Windows Media® Player

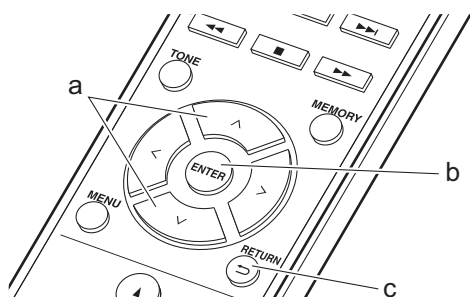
Windows Media® Player 11

1. Turn on your PC and start Windows Media® Player 11.
2. In the “Library” menu, select “Media Sharing” to display a dialog box.
3. Select the “Share my media” check box, and then click “OK” to display the compatible devices.
4. Select this unit and click “Allow”.
 - A check mark is put to the icon for this unit.
5. Click “OK” to close the dialog.
 - Depending on the version of Windows Media® Player, there may be differences in the names of items you can select.

Windows Media® Player 12

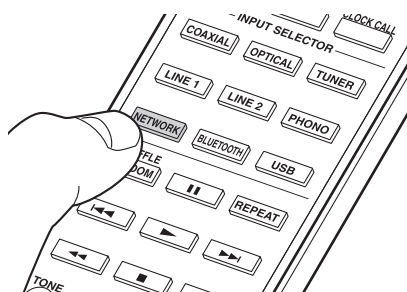
1. Turn on your PC and start Windows Media® Player 12.
2. In the “Stream” menu, select “Turn on media streaming” to display a dialog box.
 - If media streaming is already turned on, select “More streaming options...” in the “Stream” menu to list players in the network, and then go to step 4.
3. Click “Turn on media streaming” to list players in the network.
4. Select this unit in “Media streaming options” and check that it is set to “Allow”.
5. Click “OK” to close the dialog.
 - Depending on the version of Windows Media® Player, there may be differences in the names of items you can select.

Playing Back

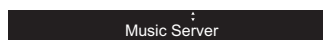


1. Turn the unit on.
2. Start the server (Windows Media® Player 11, Windows Media® Player 12, or NAS device) containing the music files to play.
3. Make sure that the PCs and/or NASs are properly connected to the same network as this unit.

4. Press NETWORK.



5. Press \wedge/\vee (a) on the remote controller to select “Music Server”, and then press ENTER (b).



6. Select the server and music file with \wedge/\vee (a) on the remote controller and press ENTER (b). To return to the previous display, press \rightarrow (c).
 - If “Connection Error.” is displayed, check whether the network is properly connected.
 - Depending on the server being used and the files played, elapsed play time and remaining play time may not be displayed.
 - For music files on a server, there can be up to 20,000 tracks per folder, and folders may be nested up to 16 levels deep.

Controlling Remote Playback from a PC

You can use this unit to play music files stored on your PC by operating the PC inside your home network. The unit supports remote playback with Windows Media® Player 12.

1. Turn on your PC and start Windows Media® Player 12.
2. Open the “Stream” menu and check that “Allow remote control of my Player...” is checked. Click “Turn on media streaming” to list players in the network.
3. Select and right-click the music file to play with Windows Media® Player 12. To remotely play a music file on another server, open the target server from “Other Libraries” and select the music file to play.
4. Select this unit in “Play to” to open the “Play to” window of Windows Media® Player 12 and start playback on the unit. If your PC is running on Windows® 8.1, click “Play to”, and then select this unit. If your PC is running on Windows® 10, click “Cast to Device”, and select this unit. Operations during remote playback are possible from the “Play to” window on the PC.
5. Adjust the volume using the volume bar on the “Play to” window.
 - Sometimes, the volume displayed on the remote playback window may differ from that appeared on the display of the unit. Also, when the volume is adjusted from this unit, this is not reflected in the “Play to” window.
 - Remote playback is not possible when using a network service or playing music files on a USB storage device.
 - Depending on the version of Windows Media® Player, there may be differences in the names of items you can select.

Supported Audio Formats

This unit supports the following music file formats.

- Note that playback via wireless LAN of sampling rates of 88.2 kHz or higher, and DSD are not supported.
- Remote play of FLAC, and DSD is also not supported.
- Variable bit-rate (VBR) files are supported. However, playback times may not be displayed correctly.
- Remote playback does not support the gapless playback.

MP3 (.mp3/.MP3) :

- Supported formats : MPEG-1/MPEG-2 Audio Layer-3
- Supported sampling rates : 44.1 kHz, 48 kHz
- Supported bitrates : Between 8 kbps and 320 kbps and VBR.

WMA (.wma/.WMA) :

- Supported sampling rates : 44.1 kHz, 48 kHz
- Supported bitrates : Between 8 kbps and 320 kbps and VBR.
- WMA Pro/Voice/WMA Lossless formats are not supported

WAV (.wav/.WAV) :

WAV files include uncompressed PCM digital audio.

- Supported sampling rates : 44.1 kHz, 48 kHz, 88.2 kHz, 96 kHz, 176.4 kHz, 192 kHz
- Quantization bit : 8 bit, 16 bit, 24 bit

AIFF (.aiff/.aif/.aifc/.afc/.AIFF/.AIF/.AIFC/.AFC) :

AIFF files include uncompressed PCM digital audio.

- Supported sampling rates : 44.1 kHz, 48 kHz, 88.2 kHz, 96 kHz, 176.4 kHz, 192 kHz
- Quantization bit : 8 bit, 16 bit, 24 bit

AAC (.aac/.m4a/.mp4/.3gp/.3g2/.AAC/.M4A/.MP4/.3GP/.3G2) :

- Supported formats : MPEG-2/MPEG-4 Audio
- Supported sampling rates : 44.1 kHz, 48 kHz, 88.2 kHz, 96 kHz
- Supported bitrates : Between 8 kbps and 320 kbps and VBR.

FLAC (.flac/.FLAC) :

- Supported sampling rates : 44.1 kHz, 48 kHz, 88.2 kHz, 96 kHz, 176.4 kHz, 192 kHz
- Quantization bit : 8 bit, 16 bit, 24 bit

LPCM (Linear PCM) :

- Supported sampling rates : 44.1 kHz, 48 kHz
- Quantization bit : 16 bit

Apple Lossless (.m4a/.mp4/.M4A/.MP4) :

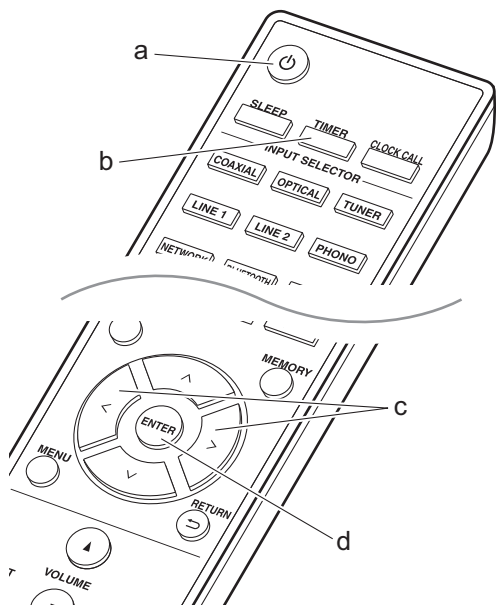
- Supported sampling rates : 44.1 kHz, 48 kHz, 88.2 kHz, 96 kHz, 176.4 kHz, 192 kHz
- Quantization bit : 16 bit, 24 bit

DSD (.dsf/.dff/.DSF/.DFF) :

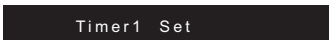
- Supported formats : DSF/DSDIFF
- Supported sampling rates : 2.8 MHz, 5.6 MHz, 11.2 MHz

Using the Alarm to Start Play

At the set time, the unit switches on and starts play of the desired source. You can set two different timers, "TIMER 1" and "TIMER 2". Make sure that the clock on this unit is set correctly. You cannot use the timers if the clock has not been set.



1. Press TIMER (b).



To set "TIMER 1", proceed to step 2. To set "TIMER 2", press TIMER (b) once more.

2. Press ENTER (d) when "Timer Set" is displayed.
3. Press </> (c) to select the source to use for timer play, then press ENTER (d).

- The sources you can select are "CD", "MD" and "TUNER".

To select "CD" or "MD", you first need to go to the settings menu and set "Option" - "Selector Name" to set an input for a jack to "CD" or "MD". If "CD" or "MD" is not set for an input, nothing is output when the timer starts.

To select "TUNER", you first need to have registered a station in a preset channel.

4. If you have selected "TUNER", press </> (c) to select a preset number and press ENTER (d).
5. Press </> (c) to select "EVERY" or "ONCE" and press ENTER (d).

If you select "EVERY", select days of the week from amongst "EVERYDAY", "SUNDAY", "MONDAY", "TUESDAY", "WEDNESDAY", "THURSDAY", "FRIDAY", "SATURDAY", "MON-FRI", "TUE-SAT", and "SAT-SUN" and press ENTER (d).

If you select "ONCE", select a day of the week from amongst "SUNDAY", "MONDAY", "TUESDAY", "WEDNESDAY", "THURSDAY", "FRIDAY", or "SATURDAY" and press ENTER (d).

6. Press </> (c) to set the start time for the alarm and press ENTER (d).
Next set the hour and minutes for the start time.
7. Press </> (c) to set the end time for the alarm and press ENTER (d).

Next set the hour and minutes for the end time.

8. Press </> (c) to set the volume (00 to 50) for the alarm and press ENTER (d).
9. The TIMER indicator lights when the settings are complete, and the content you set is displayed on the display.
10. Press ⏻ (a) to switch the unit to standby.

Check whether the alarm setting is On or Off : When the TIMER indicator is on, the alarm is on. The alarm is off if the indicator is off.

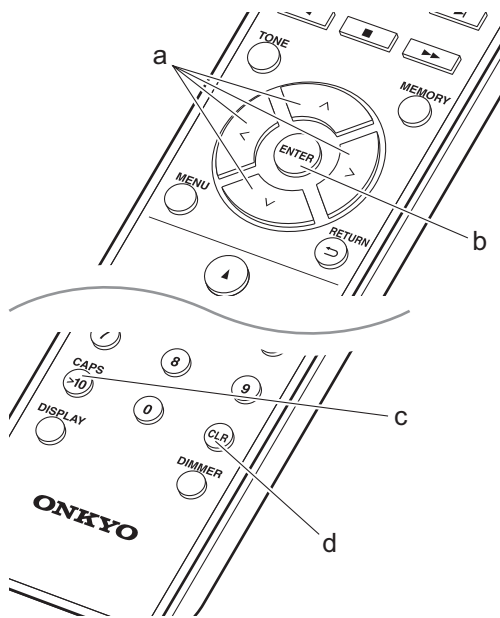
Turning the alarm setting On or Off : If the alarm is already set, you can turn the function on or off.

1. Press TIMER (b).
2. "TIMER 1" is displayed. To modify "TIMER 1", proceed to step 3. To modify "TIMER 2", press TIMER (b) once more.
3. To turn off, press ENTER (d) when "Timer Off" is displayed.
 - To turn on, press ENTER (d) when "Timer On" is displayed.
 - Press </> (c) to select "Timer Call", then press ENTER (d) to check the content you set.
4. Press ⏻ (a) to switch the unit to standby.

Entering Text, Adjusting Sound Quality, etc.

Entering text

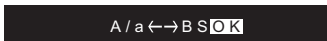
Text entry, for passwords, etc., uses the following procedure.



1. Select the characters or symbols with $\wedge/\vee/\langle/\rangle$ (a).



2. Press ENTER (b) to confirm the selected character. Repeat this to enter text.
 - Press CAPS (c) to change the characters to be enter, for example to switch between upper and lower case.
 - Press CLR (d) to delete all the input characters.
3. After completing input, select "OK" with $\wedge/\vee/\langle/\rangle$ (a) and press ENTER (b).



- Turn PUSH TO ENTER on the main unit to the left and right to select the characters, then press the dial to confirm.

Characters that can be entered

a

a	b	c	d	e	f	g	h	i	j	k	l	m
n	o	p	q	r	s	t	u	v	w	x	y	z
1	2	3	4	5	6	7	8	9	0	-	^	\
,	.	/	;	:	@	[]	S	p	a	c	e
A / a												

A

A	B	C	D	E	F	G	H	I	J	K	L	M
N	O	P	Q	R	S	T	U	V	W	X	Y	Z
!	"	#	\$	%	&	'	()	-	=	~	
<	>	?	+	*	`	{	}	S	p	a	c	e
A / a												

Space : A single space the size of a character is entered.

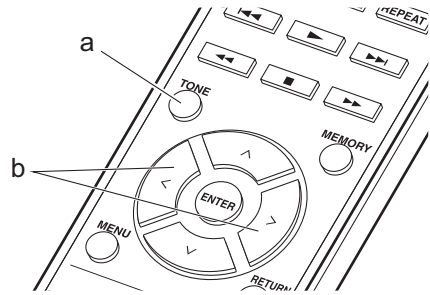
A/a : Switches between characters displayed. (a→A)

← (left) / → (right) : Select to move the cursor.

BS (backspace) : Removes a character on the left of the cursor. The cursor moves left.

OK : Confirms the entered content.

Adjusting the sound quality



1. Repeatedly press TONE (a) to select the item to adjust.
2. Set with \langle/\rangle (b).

Bass : Adjust the bass. (-6 to +6)

Treble : Adjust the treble. (-6 to +6)

Balance : Adjust the balance of the sounds output from the left and right speakers. (L6 to R6)

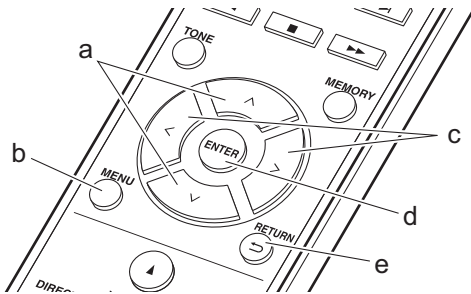
PM Bass : When "On", this enables the PM Bass function that emphasizes the bass.

Direct : When "On", this enables the Direct function that shuts down processing that affects sound quality so sound closer to the original is reproduced.

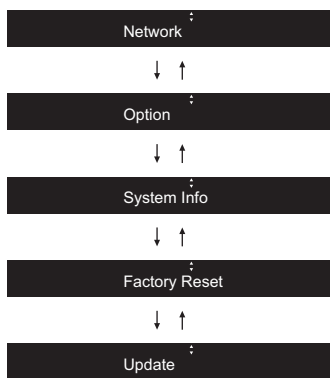
- When the Direct function is enabled, Bass, Treble, Balance, and PM Bass are disabled and you will be unable to set them.

Advanced Settings

The unit allows you to configure advanced settings to provide you with an even better experience.



1. Press MENU (b) on the remote controller.
2. Select the item with \wedge/\vee (a) on the remote controller and press ENTER (d) to confirm.



3. Select the settings with \wedge/\vee / \langle/\rangle (a, c) on the remote controller and press ENTER (d) to confirm.
 - To return to the previous screen, press \leftarrow (e).
4. To exit the settings, press MENU (b).

Network

■ Connection

Select the type connection to the network.
Select the item with \langle/\rangle (c) on the remote controller and press ENTER (d).

“Wi-Fi” : To connect via wireless LAN

“Wired” (Default Value) : To connect via wired LAN

Perform “Wi-Fi Setup” if you select “Wi-Fi”.

■ Wi-Fi Setup

Make Wi-Fi connection settings. (→P12)

This can be set only when “Wi-Fi” is selected in “Connection”.

■ SSID

The SSID of the connected access point is displayed.

■ Signal

The signal strength of the connected access point is displayed.

■ St

The connection status of the access point is displayed.

■ DHCP

Select the item with \langle/\rangle (c) on the remote controller and press ENTER (d).

“On” (Default Value) : Auto configuration by DHCP

“Off” : Manual configuration without DHCP

If selecting “Off”, you must set “IP Address”, “Subnet Mask”, “Gateway”, and “DNS” manually.

■ IP Address

Displays/Sets the IP address.

■ Subnet Mask

Displays/Sets the subnet mask.

■ Gateway

Displays/Sets the gateway.

■ DNS

Displays/Sets the primary DNS server.

■ Proxy URL

Displays/Sets the proxy server URL.

■ Proxy Port

Displays/Sets the proxy server port number when you enter “Proxy URL”.

■ Friendly Name

Change the device name for this unit which is shown on other devices connected to the network to an easily recognized name. You can input up to 31 characters. For details on how to enter text, refer to “Entering text” (→P28).

■ AirPlay PW

You can set a password of up to 31 characters so that only registered users can use AirPlay. For details on how to enter text, refer to “Entering text” (→P28).

■ Network Check

You can check the network connection. The confirmation results are displayed when you press ENTER (d).

Option

■ PWR Setting

Auto Standby	This setting places the unit on standby automatically after 20 minutes of inactivity without any audio input. Select the item with \langle/\rangle (c) on the remote controller and press ENTER (d). “On” (Default Value) : The unit will automatically enter standby mode. “Off” : The unit will not automatically enter standby mode.
--------------	---

NET Stby	<p>When this feature is turned "On", you can turn on the power of the unit via the network using an application that can control this unit.</p> <p>Select the item with </> (c) on the remote controller and press ENTER (d).</p> <ul style="list-style-type: none"> Setting to "On" (Default Value) increases the power consumption even when the unit is on standby. "NET Stby", which suppresses power consumption, may be disabled when the network connection is lost.
BT Wakeup	<p>This function wakes up the unit on standby by connecting a BLUETOOTH enabled device.</p> <p>Select the item with </> (c) on the remote controller and press ENTER (d).</p> <p>"On" : Use this function "Off" (Default Value) : Do not use this function</p> <ul style="list-style-type: none"> Setting to "On" increases the power consumption even when the unit is on standby. This setting is fixed to "Off" if "Bt Setting" - "InputChange" is set to "Off".

■ Tuner Setting

This is displayed only when "FM" or "DAB" is selected as the input source.

Search Level	<p>You can choose to have only those FM stations with strong reception selected when tuning into stations automatically if tuning regularly stops on FM stations with weak reception.</p> <p>Select the item with </> (c) on the remote controller and press ENTER (d).</p> <p>"Normal" (Default Value) "Strong" : Select only stations with strong reception.</p>
DAB Scan	<p>You can run the auto scan when new DAB stations are added or when you move house.</p>
DAB DRC	<p>With the DRC (Dynamic Range Control) setting, you can reduce the dynamic range of DAB digital radio so that you can still hear quiet parts even when listening at low volume levels - ideal for listening to the radio late at night when you don't want to disturb anyone.</p> <p>Select the item with </> (c) on the remote controller and press ENTER (d).</p> <p>"0" (Default Value) : DRC off "1" : Large reduction in dynamic range "1/2" : Small reduction in dynamic range</p>
Preset Write	Add the tuned station to the presets.
Preset Erase	Delete the tuned station from the presets.
NameEdit (FM stations only)	<p>You can give names to the stations that you have registered. For details on how to enter text, refer to "Entering text" (➔P28).</p>

■ Bt Setting

Bluetooth	<p>Select whether or not to use the BLUETOOTH function.</p> <p>Select the item with </> (c) on the remote controller and press ENTER (d).</p> <p>"On" (Default Value) : Enables connection with a BLUETOOTH enabled device by using the BLUETOOTH function. Select "On" also when making various BLUETOOTH settings. "Off" : When not using the BLUETOOTH function</p>
InputChange	<p>The input of the unit will automatically be switched to "BLUETOOTH" when connection is made from a BLUETOOTH enabled device to the unit.</p> <p>Select the item with </> (c) on the remote controller and press ENTER (d).</p> <p>"On" (Default Value) : The input will automatically become "BLUETOOTH" when a BLUETOOTH enabled device is connected. "Off" : The function is disabled.</p> <ul style="list-style-type: none"> If the input is not switched automatically, set to "Off" and change the input manually.
AutoReconnect	<p>This function automatically reconnects to the BLUETOOTH enabled device connected last when you change the input to "BLUETOOTH".</p> <p>Select the item with </> (c) on the remote controller and press ENTER (d).</p> <p>"On" (Default Value) : Use this function "Off" : Do not use this function</p> <ul style="list-style-type: none"> This may not work with some BLUETOOTH enabled devices.
Pairing Info	<p>You can initialize the pairing information saved on this unit. press ENTER (d) to initialize the pairing information stored in this unit.</p> <ul style="list-style-type: none"> This function does not initialize the pairing information on the BLUETOOTH enabled device. When pairing the unit again with the device, be sure to clear the pairing information on the BLUETOOTH enabled device in advance. For information on how to clear the pairing information, refer to the BLUETOOTH enabled device's instruction manual.
Device	Displays the name of the connected BLUETOOTH enabled device.
St	Displays the connection status of the BLUETOOTH enabled device.

■ Selector Name

This is displayed only when "COAXIAL", "OPTICAL", "LINE1", or "LINE2" is selected as the input source.

You can change the name of the input for the terminal to which you have connected a CD player or other external source to "CD" or "MD". You cannot change the name of the input for multiple jacks to "CD" or "MD". If you select "None" (Default Value), the name returns to the original input name.

Select the item with </> (c) on the remote controller

and press ENTER (d).

■ LINE OUT/SW

Change the settings according to the devices connected to the LINE OUT jacks on this unit. When changing this setting, perform without devices connected to the LINE OUT jacks.

Select the item with </> (c) on the remote controller and press ENTER (d).

"LINE OUT" (Default Value) : When connecting recording devices, such as a cassette tape deck

"SW PREOUT" : When connecting a subwoofer with built-in power amplifier

System Info

The MAC address of this unit and the current firmware version will be displayed.

Select "MAC address" or "Firmware" with ^/∨ (a) on the remote controller.

Factory Reset

Reset the settings of this unit to the status at the time of shipment. We recommend that you take a note of the settings you have changed before going ahead with a factory reset. To reset, select "Reset Start" with ^/∨ (a) on the remote controller and press ENTER (d). Press ENTER (d) again to start the reset. The unit will be placed on standby automatically when initializing is completed.

Update

"Update" is not displayed if there are no firmware updates.

■ via Network

Press ENTER (d) to select when you want to update the firmware via network.

■ via USB

Press ENTER (d) to select when you want to update the firmware via USB.

Firmware Update

The updating function on this unit

This unit has functionality to update the firmware (the system software) over a network or by the USB port. This enables us to make improvements to a variety of operations and to add features. For details about the updated play features, see below.



<http://www.onkyo.com/manual/upd/nap/2.pdf>

How to update

There are two methods for updating the firmware: via network and via USB. The update may take about 5 minutes to complete for either method: via network or via USB. Furthermore, existing settings are guaranteed regardless of the method used for update.

- For the latest information on updates, visit our company's website. There is no need to update the firmware on this unit if there is no update available.
- When performed over the network, it may take even more time depending on the connection status.
- During an update, do not
 - Disconnect and reconnect any cable or USB storage device, or perform any operation on the component such as turn off its power
 - Accessing this unit from a PC or smartphone using an application

Disclaimer: The program and accompanying online documentation are furnished to you for use at your own risk.

We will not be liable and you will have no remedy for damages for any claim of any kind whatsoever concerning your use of the program or the accompanying online documentation, regardless of legal theory, and whether arising in tort or contract.

In no event will we be liable to you or any third party for any special, indirect, incidental, or consequential damages of any kind, including, but not limited to, compensation, reimbursement or damages on account of the loss of present or prospective profits, loss of data, or for any other reason whatsoever.

Updating the Firmware via Network

- Check that the unit is turned on, and the connection to the Internet is secured.
- Turn off the controller component (PC etc.) connected to the network.
- Stop any playing Internet radio, USB storage device, or server content.

1. Press MENU on the remote controller to display "Network" on the display.



Network

2. Press \wedge/\vee and ENTER to select "Update" - "via

Network" in order.



Update

3. Press ENTER to start the firmware update.
 - "Completed" is displayed when the update is complete.
4. Press ⏻ to switch the unit to standby. The process is completed and your firmware is updated to the latest version.

If an error message is displayed : When an error occurs, " * - * * Error!" is displayed on the display of this unit. Check the following:

- * -01, * -10 : Ethernet cable not found. Connect the Ethernet cable properly.
 - * -02, * -03, * -04, * -05, * -06, * -11, * -13, * -14, * -16, * -17, * -18, * -20, * -21 : Internet connection error. Check the following:
 - The router is turned on
 - This unit and the router are connected via the network
- Try to disconnect and then connect again the power to the unit and router. This may solve the problem. If you are still unable to connect to the Internet, the DNS server or proxy server may be temporarily down. Check the service status with your ISP provider.
- Others : Disconnect then reconnect the power cord, then repeat from the beginning.

Updating via USB

- Prepare a 128 MB or larger USB storage device. FAT16 or FAT32 file system format.
- Delete any data stored on the USB storage device.
- Turn off the controller component (PC etc.) connected to the network.
- Stop any playing Internet radio, USB storage device, or server content.
- Some USB storage devices may take long to load, may not be loaded correctly, or may not be correctly fed depending on the device or their content.
- We will not be liable whatsoever for any loss or damage of data, or storage failure arising from the use of the USB storage device with this unit. Thank you for your understanding.

1. Connect the USB storage device to your PC.
2. Download the firmware file from our company's website to your PC and unzip.

Firmware files are named in the following way:
ONKHIM *****_*****_***.zip
Unzip the file on your PC. The number of unzipped files and folders varies depending on the model.
3. Copy all unzipped files and folders to the root folder of the USB storage device.
 - Make sure to copy the unzipped files.
4. Connect the USB storage device to the USB port of this unit.
 - If you connect a USB hard disk drive to the USB port of the unit, we recommend that you use its AC adapter to power it.
 - If the USB storage device has been partitioned, each section will be treated as an independent device.
5. Press MENU on the remote controller to display

“Network” on the display.



6. Press \wedge/\vee and ENTER to select “Update” - “via USB” in order.



- “Update” is not displayed if there are no firmware updates.
7. Press ENTER to start the firmware update.
- “Completed” is displayed when the update is complete.
8. Press \cup to switch the unit to standby. The process is completed and your firmware is updated to the latest version.
9. Remove the USB storage device from this unit.

If an error message is displayed : When an error occurs, “ * - * * Error!” is displayed on the display of this unit. Check the following:

- * -01, * -10 : USB storage device not found. Check whether the USB storage device or USB cable is correctly inserted to the USB port of this unit. Connect the USB storage device to an external power source if it has its own power supply.
- * -05, * -13, * -20, * -21 : The firmware file is not present in the root folder of the USB storage device, or the firmware file is for another model. Retry from the download of the firmware file.
- Others : Disconnect then reconnect the power cord, then repeat from the beginning.

Troubleshooting

Before starting the procedure

When operation is unstable, problems may be solved by simply turning the power on or to standby or disconnecting/connecting the power cord, rather than reviewing settings and operations. Try the simple measures on both the unit and the connected device. If the problem isn't fixed after referring to "Troubleshooting", resetting the unit to the status at the time of shipment may solve the problem. Note that your settings will also be initialized when you reset, so we recommend that you note down your settings before doing the following.

Resetting the unit (this resets the unit settings to the default)

1. Press MENU on the remote controller, select "Factory Reset" - "Reset Start" and press ENTER.
2. Press ENTER.
3. The unit switches to standby and the settings are reset.

Power

■ Cannot turn on the unit

- Unplug the power cord from the wall outlet, wait 5 seconds or more, then plug it in again.

■ The unit turns off unexpectedly

- The unit automatically switches to standby when the "Option" - "PWR Setting" - "Auto Standby" setting in the setup menu functions.
- Check if the speaker cable wires are touching the rear panel or if the + side and - side have shorted. If there is contact or shorting, the unit will switch to standby automatically.
- If the power turns off and indicators around the VOLUME dial on the front panel continually blink, there may have been a malfunction with the amplifier or the protection circuit may have tripped. The protection circuit may trip in the following cases.
 - When playing at high volumes. Reduce the volume if this occurs.
 - When the wires in the speaker cables have touched the rear panel or other wires. Reconnect the wires so they do not protrude from the speaker terminals if this occurs.

If the same symptoms such as being unable to turn the unit on happen repeatedly, unplug the power cord from the wall outlet immediately and contact the dealer or our company's support.

Volume reduces after switching to standby

- This unit protects circuits by reducing the volume to 40 the next time the unit is switched on if the volume was above 40 when it was switched to standby.

Sound distorted when played at high volume

- Sound may be distorted when you play with the volume set above 30 with Bass settings made or with the "PM Bass" function enabled. Press TONE on the remote controller and reduce the level of the "Bass" or set "PM Bass" to "Off". (➔P28)

There is no audio from external devices

- There is no sound if this unit is muted. Press MUTING on the remote controller to cancel muting.
- Confirm that the connection between the output jack on the external device and the input jack on this unit is correct.
- Change the input selector on this unit to the position of the terminal to which the external device is connected.
- Check the digital audio output setting on the connected component. On some game consoles, such as those that support DVD, the default setting is off.

The display doesn't light

- The display may go dim while the DIMMER is working. Press DIMMER button and change the brightness level of the display.

Wi-Fi Connection

- Try plugging/unplugging the power supply of wireless LAN router and the unit, check the wireless LAN router power-on status, and try reboot of the wireless LAN router.

■ Cannot connect to the access point

- Check that the setting of SSID and encryption (WEP, etc.) is correct. Make sure the network settings of the unit is properly set.
- Connection to an SSID that includes multi-byte characters is not supported. Name the SSID of the wireless LAN router using single-byte alphanumeric characters only and try again.
- When the wireless LAN router setting is at stealth mode (mode to hide the SSID key) or when ANY connection is off, the SSID is not displayed. Change the setting and try again.

■ Connected to an SSID different to the SSID selected

- Some access points allow you to set multiple SSIDs for one unit. If you use the automatic setting button on such a router, you may end up connecting with a different SSID from the SSID you wanted to connect to. Use the connection method requiring you to enter a password if this happens.

■ Playback is interrupted and communication does not work

- Shorten the distance from the access point or remove obstacles to improve visibility, and try again. Place the unit away from microwave ovens or other access points. It is recommended to place the access point and the unit in the same room.
- If there is a metallic object near the unit, wireless LAN connection may not be possible as the metal can effect on the radio wave.
- When other access point are used near the unit, several issues such as interrupted playback and communication may occur. You can avoid these issues by changing the channel of the access point. For instructions on changing channels, see the instruction manual provided with the access point.

Cannot Play USB storage device / HDD

- Check whether the USB storage device or USB cable is correctly inserted to the USB port of the unit.
- Disconnect the USB storage device from the unit, and then try reconnecting.
- This unit may not recognize USB storage devices and HDDs as proper devices sometimes. Try switching this unit to standby and then turning it on again.
- Depending on the type of format, the playback may not be performed normally. Check the type of the file formats that is supported. (➔P15)
- Cautions regarding USB and HDD devices (➔P15)

FM reception is poor

- Re-check the antenna connection.
- Separate the antenna from speaker cables and the power cord.
- Move the unit away from your TV or PC.
- Passing cars and airplanes can cause interference.
- Concrete walls weaken radio signals.
- FM reception may become clearer if you use the antenna jack on the wall used for the TV.
- FM reception improves if the tuning mode is set to manual (➔P18). However, reception will be monaural rather than stereo.

Network function

- If you cannot select a network service, it will become selectable when the network function is started.
- Try plugging/unplugging the power supply of this unit and the router, and try rebooting the router.

■ Cannot access the Internet radio

- Certain network service or contents available through the unit may not be accessible in case the service provider terminates its service.
- Make sure that your modem and router are properly connected, and make sure they are both turned on.
- Depending on ISP, setting the proxy server is necessary.
- Make sure that the used router and/or modem is supported by your ISP.

■ Cannot access the network server

- This unit needs to be connected to the same router as the network server.
- This unit is compatible with Windows Media® Player 11 or 12 network servers or NAS that are compatible with home network functionality. Furthermore, when using a PC, only music files registered in the Windows Media® Player library can be played.

■ Playback stops while listening to music files on the network server

- When the PC is serving as the network server, try quitting any application software other than the server software (Windows Media® Player 12, etc.).
- If the PC is downloading or copying large files, the playback may be interrupted.

■ The album names and artist names for the Music Server are not displayed

- Meta data, such as album names and artist names, needs to be recognized on the server for distribution to this unit, so this depends on the specifications of the NAS or server you are using.
- The file formats supported depend on the NAS or server software. For details, contact the manufacturer of NAS or the server software.

BLUETOOTH function

- Try plugging/unplugging the power of the unit and try turning on/off the BLUETOOTH enabled device. Restarting the BLUETOOTH enabled device may be effective.
- The BLUETOOTH enabled devices must support the A2DP profile.
- Near components such as microwave oven or cordless phone, which use the radio wave in the 2.4 GHz range, a radio wave interference may occur, which disables the use of this unit.
- If there is a metallic object near the unit, BLUETOOTH connection may not be possible as the metal can effect on the radio waves.
- In order to respond to operations on the remote controller of this unit, the BLUETOOTH enabled device must support the AVRCP profile.
- Note that operation with the remote controller is not always guaranteed with all BLUETOOTH enabled devices.

■ **Cannot connect with this unit**

- Check that the BLUETOOTH function of the BLUETOOTH enabled device is enabled.
- If an already paired unit cannot be connected, delete the pairing information on the BLUETOOTH enabled device, then pair again.

■ **Music playback is unavailable on the unit even after successful BLUETOOTH connection**

- When the audio volume of your BLUETOOTH enabled device is set low, the playback of audio may be unavailable.
- Some BLUETOOTH enabled devices may be equipped with a Send/Receive selector switch. Select Send mode.

■ **Sound is interrupted**

- There may be a problem with the BLUETOOTH enabled device. Check the information on the internet.

General Specifications

Audio Section

Rated Output Power (IEC)
2 ch × 70 W at 4 ohms, 1 kHz, 2 ch driven of 1% THD
THD+N (Total Harmonic Distortion+Noise)
0.08% (1 kHz, 8 ohms, 1 W)
Input Sensitivity and Impedance (1 kHz, 100 W/8 Ω)
200 mV/47 kΩ (LINE (Unbalance))
3.5 mV/47 kΩ (PHONO MM)
Rated RCA Output Level and Impedance
200 mV/2.2 kΩ (LINE OUT)
Phono Overload
70 mV (MM 1 kHz 0.5%)
Frequency Response
5 Hz - 60 kHz/+1 dB, -3 dB (Direct)
Tone Control Characteristics
±6 dB (100 Hz (Bass))
±6 dB (10 kHz (Treble))
Signal to Noise Ratio
106 dB (IHF-A, LINE IN, SP OUT)
80 dB (IHF-A, PHONO IN, SP OUT)
Supported Speaker Impedance
4 Ω - 16 Ω
Headphone Output Impedance
68 Ω
Headphone Rated Output
90 mW (32 Ω, 1 kHz, 10% THD)

Tuner Section

Tuning Frequency Range (FM)
87.5 MHz - 108.0 MHz, RDS
Preset Channel
40
Digital Tuner
DAB+

Network Section

ETHERNET LAN
10BASE-T/100BASE-TX
Wireless LAN (Wi-Fi)
IEEE 802.11 a/b/g/n standard
5 GHz/2.4 GHz band

BLUETOOTH Section

Communication system
BLUETOOTH Specification version 4.1+LE
Frequency band
2.4 GHz (2.402 GHz - 2.480 GHz)
Modulation method
FHSS (Freq Hopping Spread Spectrum)
Compatible BLUETOOTH profiles
A2DP 1.2, AVRCP 1.3,
HOGP-Host (Client), HOGP-HID Device (Server),
HID Service (HIDS)
Supported Codecs
SBC, AAC
Transmission range(A2DP)
20 Hz - 20 kHz (Sampling frequency 44.1 kHz)
Maximum communication range *
(Line of sight approx.) 15 m

* The actual range will vary depending on factors such as obstacles between devices, magnetic fields around a microwave oven, static electricity, cordless phone, reception sensitivity, antenna's performance, operating system, software application, etc.

General

Power Supply
AC 220 - 230 V, 50/60 Hz
Power Consumption
60 W
0.2 W (Standby)
22 W (No-sound)
2.8 W (Network Standby)
Dimensions (W × H × D)
275 mm × 87.7 mm × 283.2 mm
Weight
6.1 kg

Audio Inputs

Analog
LINE IN 1, 2
PHONO IN
Digital
OPTICAL
COAXIAL

Audio Outputs

LINE OUT
L/R
SPEAKER
L/R
Phones
Ø 3.5 mm stereo mini

USB

Front/Rear USB
Type A, USB2.0 High Speed
DC Output
5 V, 1 A (Rear) / 5 V, 0.5 A (Front)

License and Trademark Information



The Wi-Fi CERTIFIED Logo is a certification mark of Wi-Fi Alliance®.



AirPlay, iPad, iPhone, and iPod touch are trademarks of Apple Inc., registered in the U.S. and other countries.

iPad Air and iPad mini are trademarks of Apple Inc.

"Made for iPod", "Made for iPhone" and "Made for iPad" mean that an electronic accessory has been designed to connect specifically to iPod, iPhone, or iPad, respectively, and has been certified by the developer to meet Apple performance standards. Apple is not responsible for the operation of this device or its compliance with safety and regulatory standards.

Please note that the use of this accessory with iPod, iPhone or iPad may affect wireless performance.

AirPlay works with iPhone, iPad, and iPod touch with iOS 4.3.3 or later, Mac with OS X Mountain Lion or later, and PC with iTunes 10.2.2 or later.



The BLUETOOTH® word mark and logos are registered trademarks owned by Bluetooth SIG, Inc. and any use of such marks by Onkyo Corporation is under license. Other trademarks and trade names are those of their respective owners.

Onkyo Corporation does not guarantee BLUETOOTH compatibility between the AV receiver and all BLUETOOTH enabled devices.

For compatibility between the AV receiver and another device with BLUETOOTH technology, consult the device's documentation and dealer. In some countries, there may be restrictions on using BLUETOOTH devices. Check with your local authorities.

Onkyo Corporation ne garantit pas la compatibilité BLUETOOTH entre l'ampli-tuner AV et tous les appareils compatibles BLUETOOTH. Pour assurer la compatibilité entre l'ampli-tuner AV et un autre périphérique à technologie BLUETOOTH, consultez la documentation de l'appareil et le vendeur. Dans certains pays, il peut exister des restrictions sur l'utilisation d'appareils BLUETOOTH. Vérifiez auprès des autorités locales.

Onkyo Corporation no garantiza la compatibilidad BLUETOOTH entre el receptor de AV y todos los dispositivos con tecnología BLUETOOTH. Para obtener información sobre la compatibilidad entre el receptor de AV y otro dispositivo con tecnología BLUETOOTH, consulte al distribuidor y la documentación del dispositivo. En algunos países, es posible que el uso de dispositivos BLUETOOTH esté restringido. Consulte con las autoridades locales.

Onkyo Corporation non garantisce la compatibilità BLUETOOTH tra il ricevitore AV e tutti i dispositivi abilitati al BLUETOOTH. Per verificare la compatibilità tra il ricevitore AV e un altro dispositivo dotato di tecnologia BLUETOOTH, consultare la documentazione del dispositivo in questione o contattare il rivenditore. In alcuni Paesi potrebbero esistere delle limitazioni per l'utilizzo di dispositivi BLUETOOTH. Verificare le condizioni con le autorità locali.

Onkyo Corporation garantiert nicht die BLUETOOTH Kompatibilität zwischen dem AV-Receiver und allen BLUETOOTH fähigen Geräten. Zur Kompatibilität zwischen dem AV-Receiver und einem anderen Gerät mit BLUETOOTH Technologie, schauen Sie in die Dokumentation des Geräts und fragen Sie den Händler. Es kann sein, dass es in einigen Ländern Beschränkungen zur Nutzung der BLUETOOTH Geräte gibt. Prüfen Sie das bei Ihren lokalen Behörden.

Onkyo Corporation garandeert niet de BLUETOOTH compatibiliteit tussen de AV-receiver en alle BLUETOOTH apparaten. Raadpleeg voor compatibiliteit tussen de AV-receiver en een ander apparaat met BLUETOOTH technologie de documentatie van het apparaat of de verkoper. In sommige landen geldt mogelijk een beperking op het gebruik van BLUETOOTH apparatuur. Controleer de wetgeving in het land van gebruik.

Onkyo Corporation garanterar inte BLUETOOTH kompatibilitet mellan AV-receiver och alla BLUETOOTH aktiverade enheter.

För kompatibilitet mellan AV-receiver och en annan enhet med BLUETOOTH teknik, se enhetens dokumentation och återförsäljaren. I vissa länder kan det finnas begränsningar för användandet av BLUETOOTH enheter. Kontrollera hos de lokala myndigheterna.

Google Cast

Google Cast and the Google Cast badge are trademarks of Google inc.



This Mark Certifies that this product is compliant with the BLACKFIRE ALLIANCE Standard. Please refer to WWW.BLACKFIREALLIANCE.COM for more information. BLACKFIRE™ is a Registered Trademark (No. 85,900,599) of BLACKFIRE RESEARCH CORP. All rights reserved.



FireConnect™ is technology powered by BlackFire Research.



The product with this logo is conformed to Hi-Res Audio standard defined by Japan Audio Society. This logo is used under license from Japan Audio Society.



"VLSC" and "VLSC (logo)" are trademarks of Onkyo Corporation.

This product is protected by certain intellectual property rights of Microsoft. Use or distribution of such technology outside of this product is prohibited without a license from Microsoft.

Windows and the Windows logo are trademarks of the Microsoft group of companies.

QR Code is a registered trademark of DENSO WAVE INCORPORATED.

DSD and the Direct Stream Digital logo are trademarks of Sony Corporation.

MPEG Layer-3 audio coding technology licensed from Fraunhofer IIS and Thomson.

"All other trademarks are the property of their respective owners."

"Toutes les autres marques commerciales sont la propriété de leurs détenteurs respectifs."

"El resto de marcas comerciales son propiedad de sus respectivos propietarios".

"Tutti gli altri marchi di fabbrica sono di proprietà dei rispettivi proprietari."

"Alle anderen Warenzeichen sind das Eigentum ihrer jeweiligen Eigentümer."

"Alle andere handelsmerken zijn eigendom van de desbetreffende rechthebbenden."

"Alla andra varumärken tillhör deras respektive ägare."

conditions. You may not impose any further restrictions on the recipients' exercise of the rights granted herein. You are not responsible for enforcing compliance by third parties to this License.

7. If, as a consequence of a court judgment or allegation of patent infringement or for any other reason (not limited to patent issues), conditions are imposed on you (whether by court order, agreement or otherwise), that conflict with the conditions of this License, they do not excuse you from the conditions of this License. If you cannot distribute so as to satisfy simultaneously your obligations under this License and any other pertinent obligations, then as a consequence you may not distribute the Program at all. For example, if a patent license would not permit royalty-free redistribution of the Program by all those who receive copies directly or indirectly through you, then only if you could satisfy both it and this License would you be permitted to refrain entirely from distribution of the Program.

If any portion of this section is held invalid or unenforceable under any particular circumstance, the balance of the section is intended to apply and the section as a whole is intended to apply in other circumstances. It is not the purpose of this section to induce you to infringe any patents or other property right claims or to contest validity of any such claims; this section has the sole purpose of protecting the integrity of the free software distribution system, which is implemented by public license practices. Many people have made generous contributions to the wide range of software distributed through this system in reliance on consistent application of this system; it is up to the author(s) to decide if he or she is willing to distribute software through any other system not permitted by this License. This section is intended to make sure that you do not circumvent or otherwise nullify any such provisions.

8. If the distribution and/or use of the Program is restricted in certain countries either by patents or by copyrighted interfaces, the original copyright holder who places the Program under this License may add an explicit geographical distribution limitation excluding those countries, so that distribution is permitted only in those countries not so excluded. In such case, this License incorporates the limitation as if written in the body of this License.

9. The Free Software Foundation may publish revised and/or new versions of the General Public License from time to time. Such new versions will be similar in spirit to the present version, but may differ in detail to address new problems or concerns.

Each version is given a distinguishing version number. If the Program specifies a version number of this License which applies to it and "any later version", you have the option of following the terms and conditions either of that version or of any later version published by the Free Software Foundation. If the Program does not specify a version number of this License, you may choose any version ever published by the Free Software Foundation.

10. If you wish to incorporate parts of the Program into other free programs whose distribution conditions are different, write to the author to ask for permission. For software which is copyrighted by the Free Software Foundation, write to the Free Software Foundation; we sometimes make exceptions for this. You may be granted permission by the two goals of preserving the free status of all derivatives of our free software and of promoting the sharing and reuse of software generally.

NO WARRANTY

11. BECAUSE THE PROGRAM IS LICENSED FREE OF CHARGE, THERE IS NO WARRANTY FOR THE PROGRAM, TO THE EXTENT PERMITTED BY APPLICABLE LAW, EXCEPT WHEN OTHERWISE STATED IN WRITING THE COPYRIGHT HOLDERS AND/OR OTHER PARTIES PROVIDE THE PROGRAM "AS IS" WITHOUT WARRANTY OF ANY KIND, EITHER EXPRESSED OR IMPLIED, INCLUDING, BUT NOT LIMITED TO, THE IMPLIED WARRANTIES OF MERCHANTABILITY AND FITNESS FOR A PARTICULAR PURPOSE. THE ENTIRE RISK AS TO THE QUALITY AND PERFORMANCE OF THE PROGRAM IS WITH YOU. YOU SHOULD THE PROGRAM PROVE DEFECTIVE, YOU ASSUME THE COST OF ALL NECESSARY SERVICING, REPAIRS AND/OR CORRECTIONS.

12. IN NO EVENT SHALL BE REQUIRED BY APPLICABLE LAW OR AGREED TO IN WRITING WILL ANY COPYRIGHT HOLDER, OR ANY OTHER PARTY WHO MAY MODIFY AND/OR REDISTRIBUTE THE PROGRAM AS PERMITTED ABOVE, BE LIABLE TO YOU FOR DAMAGES, INCLUDING ANY GENERAL, SPECIAL, INCIDENTAL OR CONSEQUENTIAL DAMAGES ARISING OUT OF THE USE OR INABILITY TO USE THE PROGRAM (INCLUDING BUT NOT LIMITED TO LOSS OF DATA OR DATA BEING RENDERED INACCURATE OR LOSSES SUSTAINED BY YOU OR THIRD PARTIES OR A FAILURE OF THE PROGRAM TO OPERATE WITH ANY OTHER PROGRAMS), EVEN IF SUCH HOLDER OR OTHER PARTY HAS BEEN ADVISED OF THE POSSIBILITY OF SUCH DAMAGES.

END OF TERMS AND CONDITIONS

How to Apply These Terms to Your New Programs

If you develop a new program, and you want it to be of the greatest possible use to the public, the best way to achieve this is to make it free software which everyone can redistribute and change under these terms. To do so, attach the following notices to the program. It is safest to attach them to the start of each source file to most effectively convey the overall message of the warranty and the disclaimer. Each file should have at least the "copyright" line and a pointer to where the full notice is found.

<one line to give the program's name and an idea of what it does.>

Copyright (C) <year> <name of author>

This program is free software; you can redistribute it and/or modify it under the terms of the GNU General Public License as published by the Free Software Foundation; either version 2 of the License, or (at your option) any later version. This program is distributed in the hope that it will be useful, but WITHOUT ANY WARRANTY; without even the implied warranty of MERCHANTABILITY or FITNESS FOR A PARTICULAR PURPOSE. See the GNU General Public License for more details. You should have received a copy of the GNU General Public License along with this program; if not, write to the Free Software Foundation, Inc., 59 Temple Place - Suite 330, Boston, MA 02111-1307, USA.

Also add information on how to contact you by electronic and paper mail. If the program is interactive, make it output a short notice like this when it starts in an interactive mode:

Gnomovision version 69, Copyright (C) 1989 by author, Gnomovision comes with ABSOLUTELY NO WARRANTY; for details type `show w'. This is free software, and you are welcome to redistribute it under certain conditions; type `show c' for details.

The hypothetical commands `show w' and `show c' should show the appropriate parts of the General Public License. Of course, the commands you use may be called something other than `show w' and `show c'; they could even be mouse-clicks or menu items—whatever suits your program. You should also get your employer (if you work for a programmer) or your school, if any, to sign a "copyright disclaimer" for the program, if necessary. Here is a sample; alter the names:

Yooyodyne, Inc., hereby disclaims all copyright interest in the program 'Gnomovision' (which makes passes at compilers) written by James Hacker.

<signature of Ty Coon>, 1 April 1989
Ty Coon, President of Yooyodyne

This General Public License is not permitted incorporating your program into proprietary programs. If your program is a subroutine library, you may consider it more useful to permit linking proprietary applications with the library. If this is what you want to do, use the GNU Library General Public License instead of this License.

Mozilla Public License Version 2.0

1. Definitions

1.1. "Contributor"

means each individual or legal entity that creates, contributes to the creation of, or owns Covered Software.

1.2. "Contributor Versioning"

means the combination of the Contributions of others (if any) used by a Contributor and that particular Contributor's Contribution.

1.3. "Contribution"

means Covered Software of a particular Contributor.

1.4. "Covered Software"

means Source Code Form to which the initial Contributor has attached the notice in Exhibit A, the Executable Form of such Source Code Form, and Modifications of such Source Code Form, in each case including portions thereof.

1.5. "Incompatible With Secondary Licenses"

means

(a) that the initial Contributor has attached the notice described in Exhibit B to the Covered Software; or
(b) that the Covered Software was made available under the terms of version 1.1 or earlier of the License, but not also under the terms of a Secondary License.

1.6. "Executable Form"

means any form of the work other than Source Code Form.

1.7. "Larger Work"

means a work that combines Covered Software with other material, in a separate file or files, that is not Covered Software.

1.8. "License"

means this document.

1.9. "Licensesable"

means having the right to, to the maximum extent possible, whether at the time of the initial grant or subsequently, any and all of the rights conveyed by this License.

1.10. "Modifications"

means any of the following:

(a) any file in Source Code Form that results from an addition to, deletion from, or modification of the contents of Covered Software; or
(b) any new file in Source Code Form that contains any Covered Software.

1.11. "Patent Claims"

means any patent claim(s), including without limitation, method, process, and apparatus claims, in any patent Licensesable by such Contributor that would be infringed, but for the grant of the License, by the making, using, selling, offering for sale, having made, import, or transfer of either its Contributions or its Contributor Version.

1.12. "Secondary License"

means either the GNU General Public License, Version 3.0, the GNU Lesser General Public License, Version 2.1, the GNU Affero General Public License, Version 3.0, or any other later versions of these licenses.

1.13. "Source Code Form"

means the form of the work preferred for making modifications.

1.14. "You" or "Your"

means an individual or a legal entity exercising rights under this License. For legal entities, "You" includes any entity that controls, is controlled by, or is under common control with You. For purposes of this definition, "control" means (a) the power, direct or indirect, to cause the direction or management of such entity, whether by contract or otherwise, or (b) ownership of more than fifty percent (50%) of the outstanding shares or beneficial ownership of such entity.

2. License Grants and Conditions

2.1. Grants

Each Contributor hereby grants You a world-wide, royalty-free, non-exclusive license:

(a) under intellectual property rights (such as patents and trademarks) Licensesable by such Contributor to use, reproduce, make available, modify, display, perform, distribute, and otherwise exploit its Contributions, either on an unmodified basis, with Modifications, or as part of a Larger Work; and
(b) under Patent Claims of such Contributor to make, use, sell, offer for sale, have made, import, and otherwise transfer either its Contributions or its Contributor Version.

2.2. Effective Date

The licenses granted in Section 2.1 with respect to any Contribution become effective for each Contribution on the date the Contributor first distributes such Contribution.

2.3. Limitations on Grant Scope

The licenses granted in this Section 2 are the only rights granted under this License. No additional rights or licenses will be implied in the distribution or licensing of Covered Software under this License. Notwithstanding Section 2.1(b) above, no patent license is granted by a Contributor:

(a) for any code that a Contributor has removed from Covered Software; or
(b) for infringements caused by: (i) You and any other third party's modifications of Covered Software, or (ii) the combination of its Contributions with other software (except as part of its Contributor Version); or
(c) under Patent Claims infringed by Covered Software in the absence of its Contributions.
This License does not grant any rights in the trademarks, service marks, or logos of any Contributor (except as may be necessary to comply with the notice requirements in Section 3.4).

2.4. Subsequent Licenses

No Contributor makes additional grants as a result of Your choice to distribute the Covered Software under a subsequent version of this License (see Section 10.2) or under the terms of a Secondary License (if permitted under the terms of Section 3.3).

2.5. Representation

Each Contributor represents that the Contributor believes its Contributions are its original creation(s) or it has sufficient rights to grant the rights to its Contributions conveyed by this License.

2.6. Fair Use

This License is not intended to limit any rights You have under applicable copyright doctrines of fair use, fair dealing, or other equivalents.

2.7. Conditions

Sections 3.1, 3.2, 3.3, 3.4, and 3.4 are conditions of the licenses granted in Section 2.1.

3. Responsibilities

3.1. Distribution of Source Form

All distributions of Covered Software in Source Code Form, including any Modifications that You create or to which You contribute, must be under the terms of this License. You must inform recipients that the Source Code Form of the Covered Software is governed by the terms of this License, and how they can obtain a copy of this License. You may not attempt to alter or restrict the recipients' rights in the Source Code Form.

3.2. Distribution of Executable Form

If You distribute Covered Software in Executable Form then:

(a) such Covered Software must also be made available in Source Code Form, as described in Section 3.1, and You must inform recipients of the Executable Form how they can obtain a copy of such Source Code Form by reasonable means in a timely manner, at a charge no more than the cost of distribution to the recipient; and
(b) You may distribute such Executable Form under the terms of this License, or sublicense it under different terms, provided that the license for the Executable Form does not attempt to limit or alter the recipients' rights in the Source Code Form under this License.

3.3. Distribution of a Larger Work

You may create and distribute a Larger Work under terms of Your choice, provided that You also comply with the requirements of this License for the Covered Software. If the Larger Work is a combination of Covered Software with other material, (a) the entire Larger Work must be distributed under the terms of this License, and the Covered Software is not Incompatible With Secondary Licenses; this License permits You to additionally distribute such Covered Software under the terms of such Secondary License(s), so that the recipient of the Larger Work may, at their option, further distribute the Covered Software under the terms of either this License or such Secondary License(s).

3.4. Notices

You may not remove or alter the substance of any license notices (including copyright notices, patent notices, disclaimers of warranty, or limitations of liability) contained within the Source Code Form of the Covered Software, except that You may alter any license notices to the extent required to remedy known factual inaccuracies.

3.5. Application of Additional Terms

You may choose to offer, and to charge a fee for, warranty, support, indemnity or liability obligations to one or more recipients of Covered Software. However, You may do so only on Your own behalf, and not on behalf of any Contributor. You must make it absolutely clear that any such warranty, support, indemnity, or liability obligation is offered by You alone, and You hereby agree to indemnify every Contributor for any liability incurred by such Contributor as a result of warranty, support, indemnity or liability terms You offer. You may include additional disclaimers of warranty and limitations of liability specific to any jurisdiction.

4. Inability to Comply Due to Statute or Regulation

If it is impossible for You to comply with any of the terms of this License with respect to some or all of the Covered Software due to statute, judicial order, or regulation then You must: (a) comply with the terms of this License to the maximum extent possible; and (b) describe the limitations and the code they affect. Such description must be placed in a text file included with all distributions of the Covered Software under this License. Except to the extent prohibited by statute or regulation, such description must be sufficiently detailed for a recipient of ordinary skill to be able to understand it.

5. Termination

5.1. The rights granted under this License will terminate automatically if You fail to comply with any of its terms. However, if You become compliant, then the rights granted under this License from a particular Contributor are reinstated (a) provisionally, unless and until such Contributor explicitly and finally terminates Your grants, and (b) on an ongoing basis, if such Contributor fails to notify You of the non-compliance by some reasonable means (including electronic mail) within a reasonable time after the non-compliance. Moreover, Your grants from a particular Contributor are reinstated on an ongoing basis if such Contributor notifies You of the non-compliance by some reasonable means, this is the first time You have received notice of non-compliance with this License from such Contributor, and You become compliant prior to 30 days after Your receipt of the notice.

5.2. If You initiate litigation against any entity by asserting a patent infringement claim (excluding declaratory judgment actions, counter-claims, and cross-claims) alleging that a Contributor Version directly or indirectly infringes any patent, then the rights granted to You by any and all Contributors for the Covered Software under this License are terminated (a) as to the patent in question, and (b) as to all other patents owned or controlled by that Contributor which are asserted against the Covered Software.

5.3. In the event of termination under Sections 5.1 or 5.2 above, all end user license agreements (excluding distributors and resellers) which have been validly granted by You or Your distributors under this License prior to termination shall survive termination.

6. Disclaimer of Warranty

Covered Software is provided under this License on an "as is" basis, without warranty of any kind, either expressed, implied, or statutory, including, without limitation, warranties that the Covered Software is free of defects, merchantable, fit for a particular purpose, or non-infringing. The entire risk as to the quality and performance of the Covered Software is with You.

Should any Covered Software prove defective in any respect, You (not any Contributor) assume the cost of any necessary servicing, repair, or correction. This disclaimer of warranty constitutes an essential part of this License. No use of any Covered Software is authorized under this License except under this disclaimer.

7. Limitation of Liability

Under no circumstances and under no legal theory, whether tort (including negligence), contract, or otherwise, shall any Contributor, or anyone who distributes Covered Software as permitted above, be liable to You for any direct, indirect, special, incidental, or consequential damages of any character, including, without limitation, damages for lost profits, loss of goodwill, work stoppage, computer failure or malfunction, or any and all other commercial damages or losses, even if such party shall have been informed of the possibility of such damages. This limitation of liability shall not apply to liability for death or personal injury resulting from such party's negligence to the extent applicable law prohibits such limitation. Some jurisdictions do not allow the exclusion or limitation of incidental or consequential damages, so this exclusion and limitation may not apply to You.

8. Litigation

Any litigation relating to this License may be brought only in the courts of a jurisdiction where the defendant maintains its principal place of business and such litigation shall be governed by laws of that jurisdiction, without reference to its conflict-of-law provisions. Nothing in this Section shall prevent a party's ability to bring cross-claims or counter-claims.

9. Miscellaneous

This License represents the complete agreement concerning the subject matter hereof. If any provision of this License is held to be unenforceable, such provision shall be reformed only to the extent necessary to make it enforceable. Any law or regulation which provides that the language of a contract shall be construed against the drafter shall not be used to construe this License against a Contributor.

10. Versions of the License

10.1. New Versions

Mozilla Foundation is the license steward. Except as provided in Section 10.3, no one other than the license steward has the right to modify or publish new versions of this License. Each version will be given a distinguishing version number.

10.2. Effect of New Versions

You may distribute the Covered Software under the terms of the version of the License under which You originally received the Covered Software, or under the terms of any subsequent version published by the license steward.

10.3. Modified Versions

If you create software not governed by this License, you may create a new license for such software, you may create and use a modified version of this License if you rename the license and remove any references to the name of the license steward (except to note that such modified license differs from this License).

10.4. Distributing Source Code Form that is Incompatible With Secondary Licenses

If you choose to distribute Source Code Form that is Incompatible With Secondary Licenses under the terms of this version of the License, the notice in Exhibit B of this License must be attached.

Exhibit A - Source Code Form License Notice

This Source Code Form is subject to the terms of the Mozilla Public License, v. 2.0. If a copy of the MPL was not distributed with this file, You can obtain one at <http://mozilla.org/MPL/2.0/>.

If it is not possible or desirable to put the notice in a particular file, then You may include the notice in a location (such as a LICENSE file in a larger project) where a recipient would be likely to look for such a notice. You may add additional accurate notices of copyright ownership.

Exhibit B - "Incompatible With Secondary Licenses" Notice

This Source Code Form is "Incompatible With Secondary Licenses", as defined by the Mozilla Public License, v. 2.0.

Notice Regarding Third-party Software / その他第三者ソフトウェアに関するお知らせ

This product includes the following software that is directly or indirectly licensed to O&P Corporation by third-party developers. Please refer to the PDF files on the following website about the notice in response to requests from the copyright owners of each piece of software.

<http://www.onkyo.com/manual/oss/2016wsp.pdf>

本製品には弊社が第三者より直接的に又は間接的に使用の許諾を受けた下記ソフトウェアが含まれております。各ソフトウェアの著作権者の要求に基づく通知については、以下のサイトよりPDFファイルをご参照ください。

<http://www.onkyo.com/manual/oss/2016wsp.pdf>

curl
Copyright (c) 1996 - 2015, Daniel Stenberg, daniel@haxx.se. All rights reserved.

dbus-1
This license is Copyright (C) 2003-2004 Lawrence E. Rosen. All rights reserved.

dropbear
Copyright (c) 2002-2013 Matt Johnston
Portions copyright (c) 2004 Mihnea Stoenescu
All rights reserved.

hostap-daemon
Copyright (c) 2002-2012, Jouni Malinen <j@w1.fi> and contributors
All Rights Reserved.

iw
Copyright (c) 2007, 2008 Johannes Berg
Copyright (c) 2007 Andy Lutomiński
Copyright (c) 2007 Mike Kershaw
Copyright (c) 2008-2009 Luis R. Rodriguez

libbz2-0
This program, "bz2p", the associated library "libbz2p", and all documentation, are copyright (C) 1996-2010 Julian R Seward. All rights reserved.

libcap2
Copyright (c) 1997-8,2008 Andrew G. Morgan <morgan@kernel.org>

libcrypto1.0.0
Copyright (c) 1998-2011 The OpenSSL Project. All rights reserved.

libcurl5
Copyright (c) 1996 - 2014, Daniel Stenberg, <daniel@haxx.se>. All rights reserved.

libdbus-1-3
Copyright (C) 2003-2004 Lawrence E. Rosen. All rights reserved.

libexpat1
Copyright (c) 1998, 1999, 2000 Thai Open Source Software Center Ltd and Clark Cooper
Copyright (c) 2001, 2002, 2003, 2004, 2005, 2006 Expat maintainers.

libffi6
Copyright (c) 1996-2012 Anthony Green, Red Hat, Inc. and others.

libflac8
Copyright (C) 2000,2001,2002 Free Software Foundation, Inc.

51 Franklin St, Fifth Floor, Boston, MA 02110-1301 USA

Copyright (C) 2000-2009 Josh Coalition

Copyright (C) 2011-2013 Xiph.Org Foundation

libformw5
Copyright (c) 1998-2004,2006 Free Software Foundation, Inc.

libfreeya6
Copyright 1995-2010, 2013 by David Turner, Robert Wilhelm, and Werner Lemberg.

libglib-2.0-0
pcre : Copyright (c) 1997-2012 University of Cambridge

libjpeg8
Independent JPEG Group's JPEG software
copyright (C) 1991-2012, Thomas G. Lane, Guido Vollbeding.

liblog4cplus-1.1-9
Copyright (C) 1999-2009 Contributors to log4cplus project. All rights reserved.

libmenuw5
Copyright (c) 1998-2004,2006 Free Software Foundation, Inc.

libncursesw5
Copyright (c) 1998-2004,2006 Free Software Foundation, Inc.

libogg0
Copyright (c) 2002, Xiph.org Foundation

libopus0
Copyright 2001-2011 Xiph.Org, Skype Limited, Octasic, Jean-Marc Valin, Timothy B. Terriberry, CSIRO, Gregory Maxwell, Mark Borgerding, Erik de Castro Lopo

liborc-0.4-0
ORC - The ORC Runtime Compiler
Copyright 2002 - 2009 David A. Schleeff <ds@schleeff.org>

Copyright (C) 1997 - 2002, Makoto Matsumoto and Takuji Nishimura

libpanelw5
Copyright (c) 1998-2004,2006 Free Software Foundation, Inc.

libpopit0
Copyright (c) 1998 Red Hat Software

libssl1.0.0
Copyright (c) 1998-2011 The OpenSSL Project. All rights reserved.

libtinfo5
Copyright (c) 1998-2004,2006 Free Software Foundation, Inc.

libuuid1
Copyright (C) 1996, 1997, 1998, 1999 Theodore Ts'o

libvorbis
Copyright (c) 2002-2008 Xiph.org Foundation

libx11-6
Copyright (C) 2003-2006,2008 Jamey Sharp, Josh Triplett
Copyright © 2009 Red Hat, Inc.
Copyright 1996-1998, 1999, 2000, 2004, 2009, 2010 Oracle and/or its affiliates.
All rights reserved.

libxau6
Copyright 1988, 1993, 1994, 1998 The Open Group

libxcb1
Copyright (C) 2001-2006 Bart Massey, Jamey Sharp, and Josh Triplett. All Rights Reserved.

libxdmcp6
Copyright 1989, 1998 The Open Group

libxml2
Copyright (C) 1998-2012 Daniel Veillard.

nanomsg
Achille Roussel <ach@fb.com> Aleksandar Fabijanic <alex@pocoproject.org>
Alex Brem <alex@fukulation.net> Andre Jonsson <andre.jonsson@dialoquus.se>
Andrew Starks <drew.starks@trims.com> Aram Santogitis <aram.santogitis@cern.ch>
Ark Degtiarov <a@amcloud.co> Bill McCroskey <Bill.McCroskey@Crown.com>
Boris Zentner <bzm@zbz.de> Bruce Mitchener <bruce.mitchener@gmail.com>
Bruno Bigras <brigras@bruno.org> Chip Saitenberg <chips@pobox.com>
David Beck <dbeck@beckground.hu> Dirkjan Ochtman <dirkjan@ochtman.nl>
Dong Fang <yp.fangdong@gmail.com> Drew Crawford <drew@sealedabstract.com>

Dylan Socolobsky <dsocolobsky@gmail.com>
Emeric Chevalier <emericchevalier.pro@gmail.com>

Emil Renner Berthing <esmil@mailme.dk> Evan Wies <evan@neomantra.net>
Garrett Roberts <bruba@cs.cmu.edu> Garrett D'Amore <garrett@damore.org>
Gonzalo Diezheim <gonzalo.diezheim@diezheim.org>

Gaurav Gupta <g.gupta@samsung.com> Hajime Saito <emijah.s@gmail.com>
Harlan Lieberman-Berg <H.LiebermanBerg@gmail.com>
Immanuel Weber <immanuel.weber@fhr.fraunhofer.de>

Ivan Pechorin <ivan.pechorin@gmail.com> Joshua Foster <jhawk28@gmail.com>
Julien Ammou <schmurfy@gmail.com> Kaspar Schiess <kaspar.schiess@absurd.li>

Kristian Lein-Mathisen <kristianlein@gmail.com> Luca Barbato <luca.barbato@gmail.com>
Manuel Mendez <mmendez34@gmail.com> Matt Eltzy <socket@gmail.com>

Martin Sustrik <sustrik@250bpm.com> Matt Howlett <matthewlett@gmail.com>

Max Drechsler <max.drechsler@web.de> Michael John <goash.mike@gmail.com>

Mikko Koppanen <mikko@uutu.fi> Nick Desaulniers <ndesaulniers@mozilla.com>

Nicolas Hillegeer <nicolashillegeer@gmail.com> Nir Soffer <nirsof@gmail.com>

Orjan Persson <o@42mm.org> Oskari Timperi <oskari.timperi@iki.fi>

Paul Colomiets <paull@colomiets.name> Pavlo Kapyshin <@93z.org>

Remy Bruno <remy.bruno@trimev.com> Rob Selek <rob@controlq.com>

Ryan Killea <ryanbayorkillea@wpi.edu> Robert G. Jakabosky <stobby@sharedrealm.com>

Sergey Avseyev <sergey.avseyev@gmail.com> Sergey Kovalevich <indie@gmail.com>

Sergei Nikulov <sergei.nikulov@gmail.com> Simon Strandgaard <simon@nots.dk>

Stani Mihai <stanmihai@gmail.com> Steve McKay <shubalubdu@gmail.com>

Timothee Besset <ttime@ttime.net> Tobias Peters <tobias.peters@kreativeffekt.at>

Victor Guera <viguera@gmail.com> Yonggang Luo <lyongyonggang@gmail.com>

Zoltan Boszormenyi <boszoz@pr.hu>

ncurses-terminfo-base
Copyright (c) 1998-2004,2006 Free Software Foundation, Inc.

openssl-conf
Copyright (c) 1998-2011 The OpenSSL Project. All rights reserved.

shadow
Copyright (c) 1996 - 2001, Marek Michalakiewicz

Copyright (c) 2001 - 2006, Tomasz Kloczko

Copyright (c) 2007 - 2009, Nicolas François

sudo
Copyright (c) 2009-2013 Todd C. Miller <Todd.Miller@courtesan.com>

wpa-suppliment-cli
Copyright (c) 2002-2014, Jouni Malinen <j@w1.fi> and contributors

All Rights Reserved.

wpa-suppliment-passphrase

Copyright (c) 2002-2014, Jouni Malinen <j@w1.fi> and contributors

All Rights Reserved.

wpa-suppliment
Copyright (c) 2002-2014, Jouni Malinen <j@w1.fi> and contributors

All Rights Reserved.

boost
Copyright © 2008 Beman Dawes, Rene Rivera

iperf-2.0.5
Copyright (c) 1999-2007, The Board of Trustees of the University of Illinois

All Rights Reserved.

thttpd
Copyright © 1995, 1998, 1999, 2000, 2001 by Jef Poskanzer <jef@mail.acme.com>

Expat
Copyright (c) 1998, 1999, 2000 Thai Open Source Software Center Ltd.

FastDelegate
Copyright © CodeProject, 1999-2015

All Rights Reserved.

libogg
Copyright (c) 2002, Xiph.org Foundation

Tremolo
Copyright (C) 2002-2009 Xiph.org Foundation
Changes Copyright (C) 2009-2010 Robin Watts for Pinknoise Productions Ltd

Tremor
Copyright (c) 2002, Xiph.org Foundation

Mersenne Twister
Copyright (C) 1997 - 2002, Makoto Matsumoto and Takuji Nishimura, All rights reserved.

zlib
Copyright notice: (C) 1995-2013 Jean-loup Gailly and Mark Adler

c-ares
Copyright 1998 by the Massachusetts Institute of Technology.

mDNSResponder
Copyright (c) 2002-2006 Apple Computer, Inc

GladmanAES
Copyright (c) 1998-2010, Brian Gladman, Worcester, UK

Curve25519
Copyright 2008, Google Inc

You may obtain a complete machine-readable copy of the corresponding source code on a physical medium by contacting Customer Service.

This offer is valid to any third party within three years after last shipment of the product. Costs of physical distribution will be charged.

コールセンターにお問い合わせいただければ、対応するソースコードの完全な機械可読コピーを物理メディアでお渡しします。

製品の最終出荷後、3年間有効です。掛かる費用についてはご負担いただけます。

Memo

ONKYO

2-3-12 Yaesu, Chuo-ku, Tokyo 104-0028 JAPAN
<http://www.onkyo.com/>

<U.S.A.>

18 Park Way, Upper Saddle River, N.J. 07458, U.S.A.
For Dealer, Service, Order and all other Business Inquiries:
Tel: 201-785-2600 Fax: 201-785-2650
<http://www.us.onkyo.com/>

For Product Support Team Only:
1-800-229-1687
<http://www.us.onkyo.com/>

<Germany>

Gutenbergstrasse 3, 82178 Puchheim, Germany
Tel: +49-8142-4401-0 Fax: +49-8142-4208-213
<http://www.eu.onkyo.com/>

<UK>

Anteros Building, Odyssey Business Park, West End Road, South Ruislip, Middlesex, HA4 6QQ United Kingdom
Tel: +44 (0)871-200-1996 Fax: +44 (0)871-200-1995

<Hong Kong>

Unit 1033, 10/F, Star House, No 3, Salisbury Road, Tsim Sha Tsui Kowloon, Hong Kong.
Tel: +852-2429-3118 Fax: +852-2428-9039
<http://www.hk.onkyo.com/>

<PRC>

302, Building 1, 20 North Chaling Rd., Xuhui District, Shanghai, China 200032,
Tel: +86-21-52131366 Fax: +86-21-52130396
<http://www.cn.onkyo.com/>

<Asia, Oceania, Middle East, Africa>

Please contact an Onkyo distributor referring to Onkyo SUPPORT site.
<http://www.intl.onkyo.com/support/>

Корпорация Онкьо энд Пи
2-3-12, Яэсу, Чуо-ку, г. Токио, 104-0028, ЯПОНИЯ

The above-mentioned information is subject to change without prior notice.
Visit the Onkyo web site for the latest update.

(C) Copyright 2016 Onkyo & Pioneer Corporation Japan. All rights reserved.
Onkyo group has established its Privacy Policy, available at [<http://www.onkyo.com/privacy/>].
Printed in Malaysia / Imprimé en Malaisie / Напечатано в Малайзии

SN 29402579

F1608-0



* 2 9 4 0 2 5 7 9 *