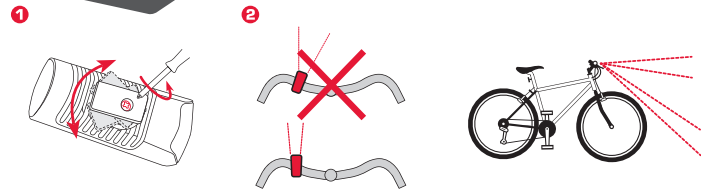
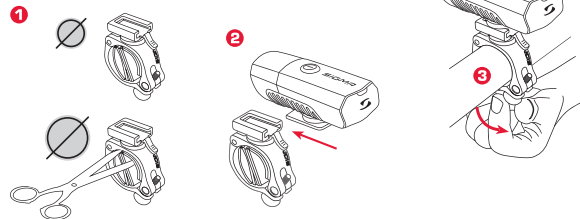


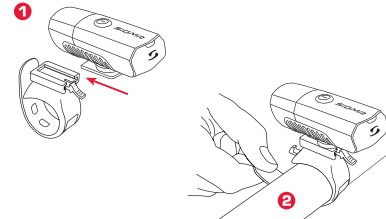
BUSTER 300



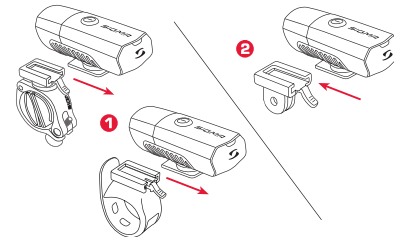
SCREW-BRACKET HALTERUNG/ SCREW-BRACKET MOUNT



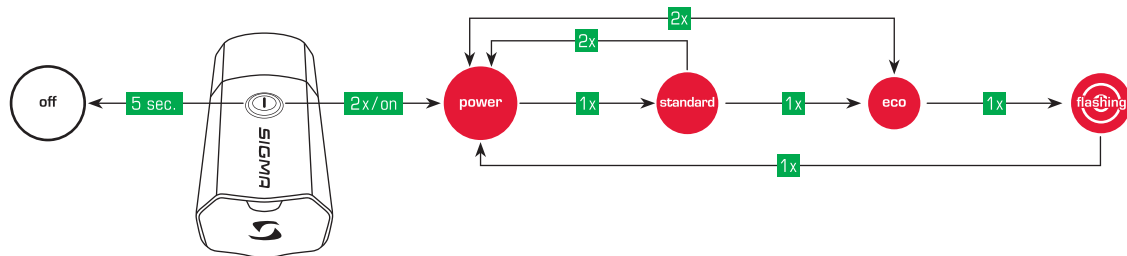
SILIKON HALTERUNG/ SILICONE BRACKET



ADAPTER FÜR ACTION CAMERA HALTERUNG/ ADAPTER FOR ACTION CAMERA MOUNT



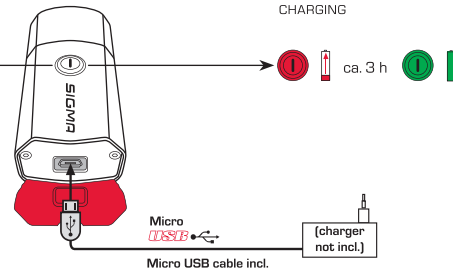
DRÜCKEN DER BEDIENTASTE ZUM WECHSELN DER MODI/ PRESS BUTTON TO SWITCH MODES



AKKUINDIKATOR/ BATTERY CONTROL

- > 75%
- 25-75%
- < 25%

LADEVORGANG/ CHARGING



SPRITZWASSERSCHUTZ/ SPLASH RESISTANT



Achten Sie bitte darauf, dass die rotmarkierte Abdichtung stets korrekt verschlossen ist, um das Eindringen von Wasser zu verhindern. / Please always keep the USB-Cover closed tight after charging to ensure water tightness.

EU-Konformitätserklärung

Hiermit erklärt SIGMA-ELEKTRO GmbH, dass sich die BUSTER 300 in Übereinstimmung mit den grundlegenden Anforderungen und den anderen relevanten Vorschriften der Richtlinie 2014/30/EU und RoHS Directive 2011/65/EU befinden. Weitere Informationen: ce.sigmasport.com/buster300

CE Information

EN You can find the CE declaration at:
ce.sigmasport.com/buster300

DE Sie finden die Konformitäts-Erklärung unter folgendem Link:
ce.sigmasport.com/buster300

FR Vous trouverez la déclaration CE à l'adresse :
ce.sigmasport.com/buster300

IT La dichiarazione CE è disponibile all'indirizzo:
ce.sigmasport.com/buster300

ES Puede encontrar la declaración de conformidad CE en:
ce.sigmasport.com/buster300

PT Poderá encontrar a declaração CE em:
ce.sigmasport.com/buster300

NL U kunt de CE-certificering vinden op:
ce.sigmasport.com/buster300

PL Deklaracja CE znajduje się na stronie:
ce.sigmasport.com/buster300

CZ ES prohlášení najdete na adrese:
ce.sigmasport.com/buster300

DK Du kan finde EF-overensstemmelseserklæringen på:
ce.sigmasport.com/buster300

EU-Declaration of Conformity

SIGMA-ELEKTRO GmbH hereby declares that the BUSTER 300 comply with the fundamental requirements and other relevant regulations of Directive 2014/30/EU and RoHS Directive 2011/65/EU. For further information see: ce.sigmasport.com/buster300

FI CE-vakuutus on luettavissa osoitteessa:
ce.sigmasport.com/buster300

NO Du finner CE-deklarasjonen under:
ce.sigmasport.com/buster300

SE Du kan hitta CE-deklarasjonen under:
ce.sigmasport.com/buster300

RU Декларацию о соответствии нормам ЕС Вы можете найти по адресу: ce.sigmasport.com/buster300

HU A CE megfelelőségi tanúsítvány a ce.sigmasport.com/buster300 oldalon található.

TR AT uygunluk beyanını ce.sigmasport.com/buster300 adresinde bulabilirsiniz.

RO Declarația de conformitate CE poate fi găsită la: ce.sigmasport.com/buster300

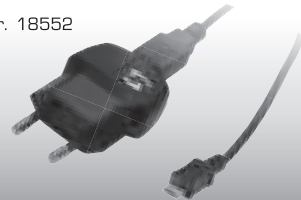
BG CE декларацията можете да намерите на: ce.sigmasport.com/buster300

SI Izjavo CE najdete na ce.sigmasport.com/buster300

SK ES vyhlásenie nájdete na adrese: ce.sigmasport.com/buster300

ZUBEHÖR / ACCESSORIES

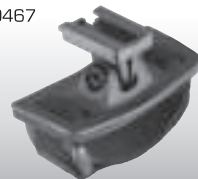
Art.-Nr. 18552



LADEGERÄT + MICRO USB KABEL
CHARGER + CHARGING CABLE MICRO-USB

ZUBEHÖR / ACCESSORIES

Art.-Nr. 00467



HELMET BRACKET
HELMHALTERUNG

ZUBEHÖR / ACCESSORIES

Art.-Nr. 00460



SCREW-BRACKET HALTERUNG
SPARE SCREW-BRACKET MOUNT

ZUBEHÖR / ACCESSORIES

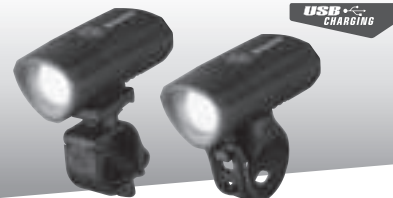
Art.-Nr. 00145



SILIKON HALTERUNG
SILICONE BRACKET

LIGHTING SYSTEMS TOPLINE

SIGMA
GERMANY



BUSTER 300

SIGMA-ELEKTRO GmbH
Dr.-Julius-Leber-Straße 15
D-67433 Neustadt / Weinstraße

SIGMA SPORT USA
3487 Swenson Ave.
St. Charles, IL 60174, U.S.A.

SIGMA-ELEKTRO (Hong Kong) Ltd
Room 2010, 20/F, No.1 Hung To Road,
Kwun Tong, Kowloon, Hong Kong



189500/1