

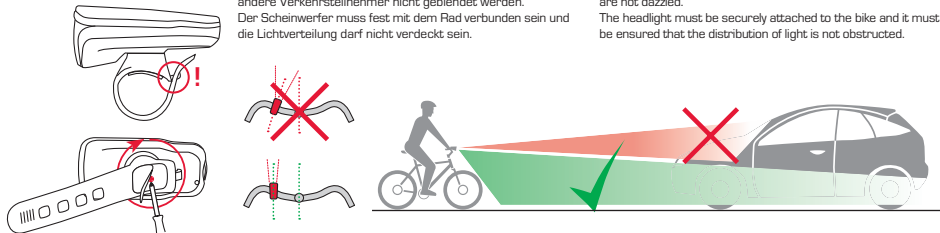
## AURA 60 USB

### MONTAGE / MOUNTING

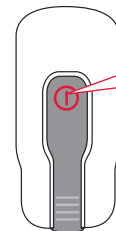
Anbauhöhe der Frontlampe: min. 400 mm und max. 1200 mm über der Fahrbahn. Stellen Sie die Fahrradlampe so ein, dass andere Verkehrsteilnehmer nicht geblendet werden. Der Scheinwerfer muss fest mit dem Rad verbunden sein und die Lichtverteilung darf nicht verdeckt sein.

Mounting height for front light: min. 400 mm and max. 1200 mm above the roadway. Adjust the front light so that other road users are not dazzled.

The headlight must be securely attached to the bike and it must be ensured that the distribution of light is not obstructed.



### 3 MODI / 3 MODES

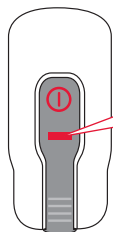


#### SCHALTER / BUTTON

- 2 x click = on / HIGH mode
- + 1 x klick = MID mode
- + 1 x klick = LOW mode
- ◀ + 1 x klick

○ + 1 x click 2 sec. = off

### AKKU INDIKATOR / BATTERY INDICATOR



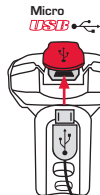
▬ 100 - 71%

▬ 70 - 31%

▬ 30 - 0%

Frontlampe bitte unbedingt aufladen. / Charge your frontlight directly

### INDIKATION / INDICATION

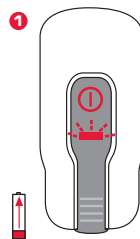


Achten Sie bitte darauf, dass die rotmarkierte Abdichtung stets korrekt verschlossen ist. / Please always keep the silicone plug closed after charging.

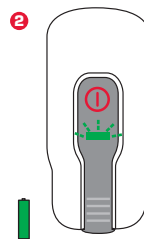
5 V / 500-1000 mA

charger not incl.

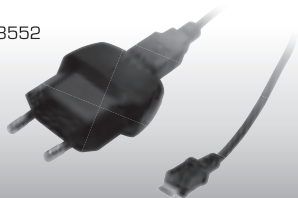
### LADEVORGANG / CHARGING



ca. 3,5 h

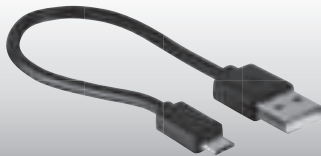


Art.-Nr. 18552



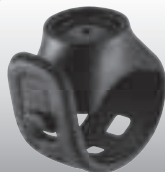
**LADEGERÄT + MICRO USB KABEL**  
**CHARGER + CHARGING CABLE MICRO-USB**

Art.-Nr. 18553



**MICRO USB KABEL**  
**CHARGING CABLE MICRO-USB**

Art.-Nr. 00146

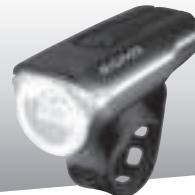


**SILIKON-ERSATZHALTERUNG**  
**SILICONE BRACKET**

**CE INFORMATION**

- EN SIGMA-ELEKTRO GmbH hereby declares that the AURA 60 USB comply with the fundamental requirements and other relevant regulations of Directive 2014/30/EU and RoHS Directive 2011/65/EU. You can find the CE declaration at: [ce.sigmasport.com/aura60usb](http://ce.sigmasport.com/aura60usb)
- DE Hiermit erklärt SIGMA-ELEKTRO GmbH, dass sich die AURA 60 USB in Übereinstimmung mit den grundlegenden Anforderungen und den anderen relevanten Vorschriften der Richtlinie 2014/30/EU und RoHS Directive 2011/65/EU befinden. Sie finden die Konformitäts-Erklärung unter folgendem Link: [ce.sigmasport.com/aura60usb](http://ce.sigmasport.com/aura60usb)
- FR Vous trouverez la déclaration CE à l'adresse : [ce.sigmasport.com/aura60usb](http://ce.sigmasport.com/aura60usb)
- IT La dichiarazione CE è disponibile all'indirizzo: [ce.sigmasport.com/aura60usb](http://ce.sigmasport.com/aura60usb)
- ES Puede encontrar la declaración de conformidad CE en: [ce.sigmasport.com/aura60usb](http://ce.sigmasport.com/aura60usb)
- NL U kunt de CE-certificering vinden op: [ce.sigmasport.com/aura60usb](http://ce.sigmasport.com/aura60usb)

**60 Lux**  
**70 m**  
 up to **10 h**


**AURA 60 USB****SIGMA-ELEKTRO GmbH**

Dr. -Julius-Leber-Straße 15  
 D-67433 Neustadt / Weinstraße

**SIGMA SPORT USA**

1860B Dean St.  
 St. Charles, IL 60174, U.S.A.

**SIGMA-ELEKTRO (Hong Kong) Ltd**

Room 2010, 20/F, No.1 Hung To Road,  
 Kwun Tong, Kowloon, Hong Kong

