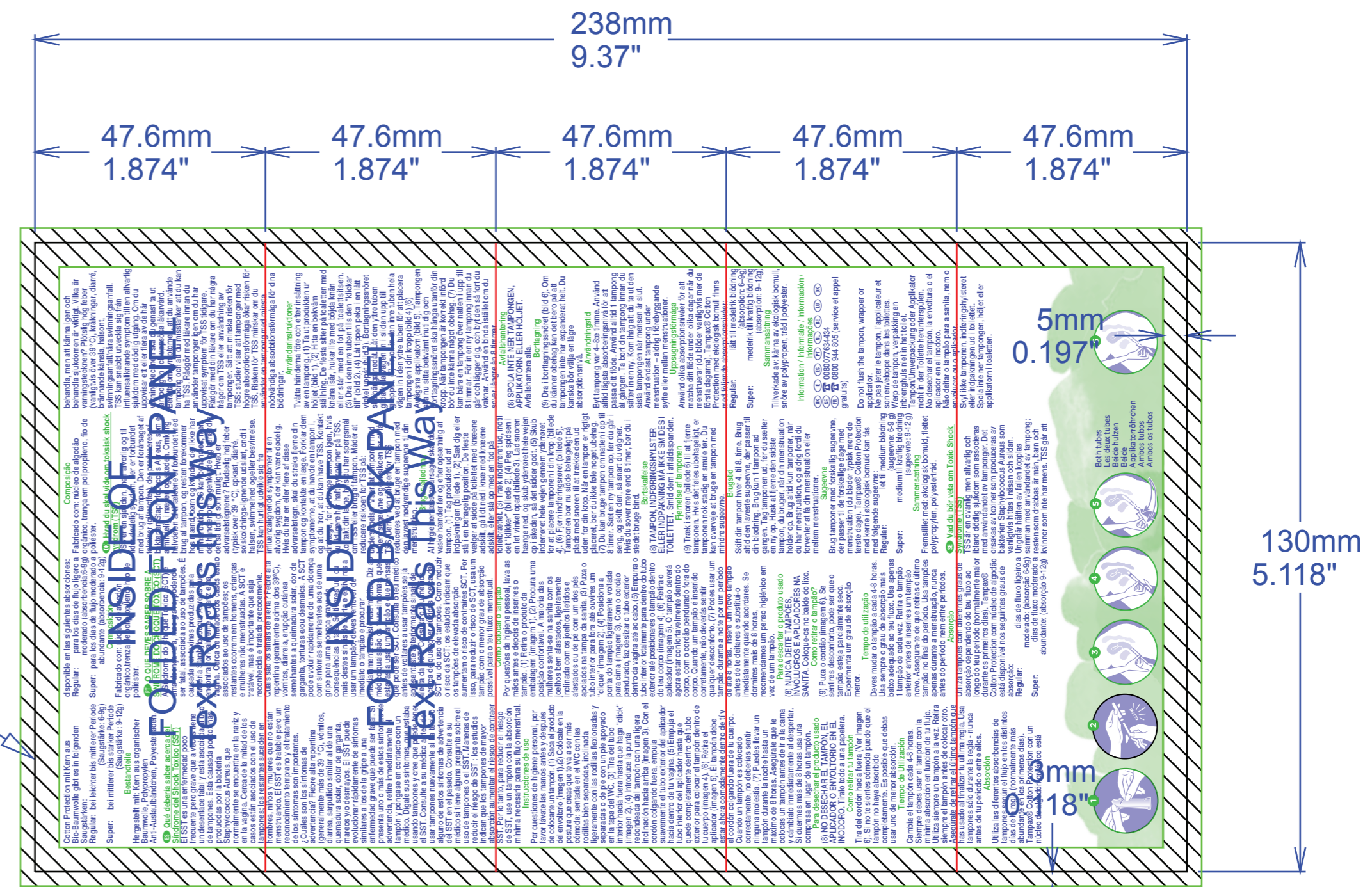


FRONT SIDE

NO LIVE COPY -- BACKGROUND COLOR MUST BE THE SAME ON ENTIRE BORDER FRONT AND BACK SIDES OF SHEET. TSS STATEMENT MUST APPEAR ON THE OUTSIDE OF THE FRONT AND BACK PANELS OF THE FOLDED FINISHED LITERATURE.



BACK SIDE

P&G RESTRICTED

FINAL ART

POA No: POA-00276206 PantoneLIVE Depd: N/A
 PMP/IPMS: 90010913 Print Process: OFS
 Project No: P-0054384

POA Description: Tampax Europe Tampons NATURALS Leaflet Mix REG/SU 001 LEAFLET

Date: 20-Apr-2021
 Supplier: SGK

SGK
 Supplier Reference: 402321989_0230

EQUITY COLORS REPRESENTATION: Colors represented with a diagonal line have been modified to aid PDF approval.

PMS 872 U PMS 2421 U

SGK is a Matthews International Corporation

OVERPRINT PREVIEW

OFF VIEW CONTENT

Country: BELGIUM, DENMARK, FRANCE, IRELAND, LUXEMBOURG, NETHERLANDS, PORTUGAL, SPAIN, SWEDEN, UNITED KINGDOM

Languages: EN, FR, DE, ES, PT, NL, DA, SV

RESTRICTED

DESCRIPTION	DATE	11/7/2013	Restricted: Property of Procter & Gamble Company. IMPORTANT: this drawing print is loaned for mutual assistance and as such is subject to recall at any time. Information contained herein is not to be disclosed or reproduced in any form for the benefit of parties other than necessary subcontractors
Tampax Leaflet			
LEAFLET TAMPAX POCKET PEARL 130MM X 238MM FLAT			
BLUEPRINT	96838521.001	SCALE	1:1
SUPERCEDES	NEW	DRAWING NO.	
PROCTER & GAMBLE			
DRAWN BY:	ANGIE MARQUIS	APPROVED BY:	JERRY STEPHENS

LEGEND

	Die Line
	Score / Crease
	NO COPY AREA
	VOID AREA NO INKS, NO COATING.
	COPY AREA

Revision History:
 1. Initial Construction