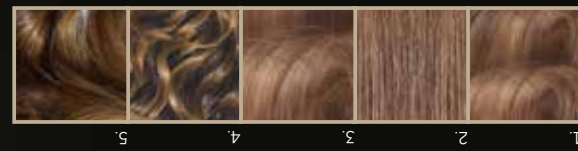


remington-europe.com



- 13 year guarantee + 1 extra year when you register online within 28 days
- Professional storage and carry bag
- 3m salon length cord
- 5 heat / speed settings including cool air
- 50mm retractable bristle brush
- 21mm thermal bristle brush
- Root boost attachment for volume
- Paddle brush for smooth drying
- Fast dry concentrator
- 1200 Watts
- Ceramic grille for even heat
- for healthy looking shiny hair
- Ionic conditioning to reduce static & frizz



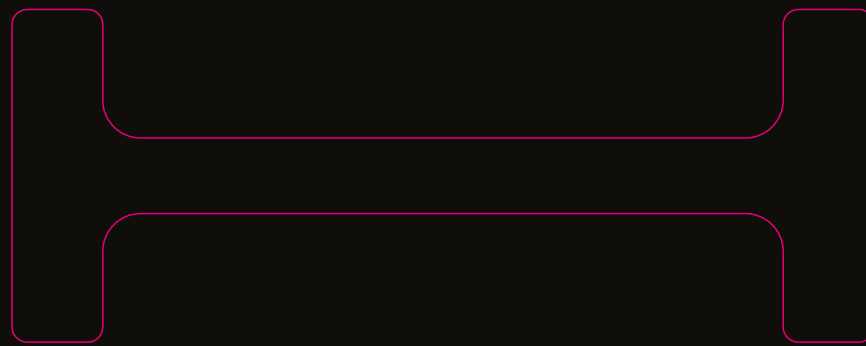
Versatile 5 in 1 styler to give your hair a boost with visible volume & natural bounce

AMAZE PROFESSIONAL AIRSTYLER



AS1220

REMINGTON PROFESSIONAL

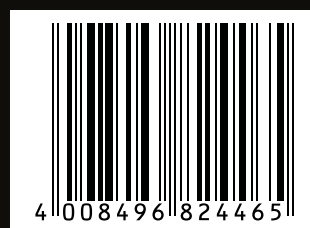


AMAZE AIRSTYLER

REMINGTON PROFESSIONAL



AMAZE AIRSTYLER



Ref. No. AS1220 U51



220-240V ~ 50 / 60 Hz 1000-1200W 1019g Type No. AS1220
 REMINGTON® IS A REGISTERED TRADE MARK OF SPECTRUM BRANDS, INC., OR ONE OF ITS SUBSIDIARIES.
 THE ACTUAL PRODUCT MAY DIFFER FROM THE PICTURE ON THE CARTON.
 MADE IN CHINA TO THE SPECIFICATIONS OF SPECTRUM BRANDS, INC.
 Russell Hobbs Deutschland GmbH, Am Unisyspark 1 65843 Sulzbach Germany.
 UK & Ireland: Spectrum Brands (UK) Ltd., Fir Street, Fallsworth, Manchester, M35 0HS, England.
 ©2021 Spectrum Brands, Inc. remington-europe.com
 †3 year guarantee + 1 extra year when you register online within 28 days uk.remington-europe.com/product-registration

P/N: T27-7001171

Spectrum Brands

REMINGTON EST. NEW YORK 1937

JOB TITLE AS1220 Amaze Airstyler - GCC

DEPT CONTACT: Fern Taylor
 ARTWORKER: Hannah
 JOB START DATE: 06/12/2021
 REF. No: AS1220
 TYPE NO: AS1220
 P/N: T27-7001171

JOB AMENDS HISTORY:

A	06/12/21	Hannah	Initial Release
B			
C			
D			

CMYK



ADDITIONAL PANTONES	SURFACE TREATMENTS	
<input type="checkbox"/> Pantone 877c	<input type="checkbox"/> Foil Stamped	<input type="checkbox"/> Matt Varnish
<input type="checkbox"/> Pantone XXXc	<input type="checkbox"/> Emboss	<input type="checkbox"/> Gloss Varnish

Colour references shown are correct, however they will not appear colour correct on screen. For correct colour references always refer to a Pantone® Colour Specifier.

PAPER MATERIALS

OUTER LINER: N/A
 CORRUGATED MEDIUM: N/A
 INNER LINER: N/A

OVERALL BOX SIZE	PRINTING AREA
Length x Width x Height	Length x Height

ADDITIONAL NOTES

All Over Gloss Lamination