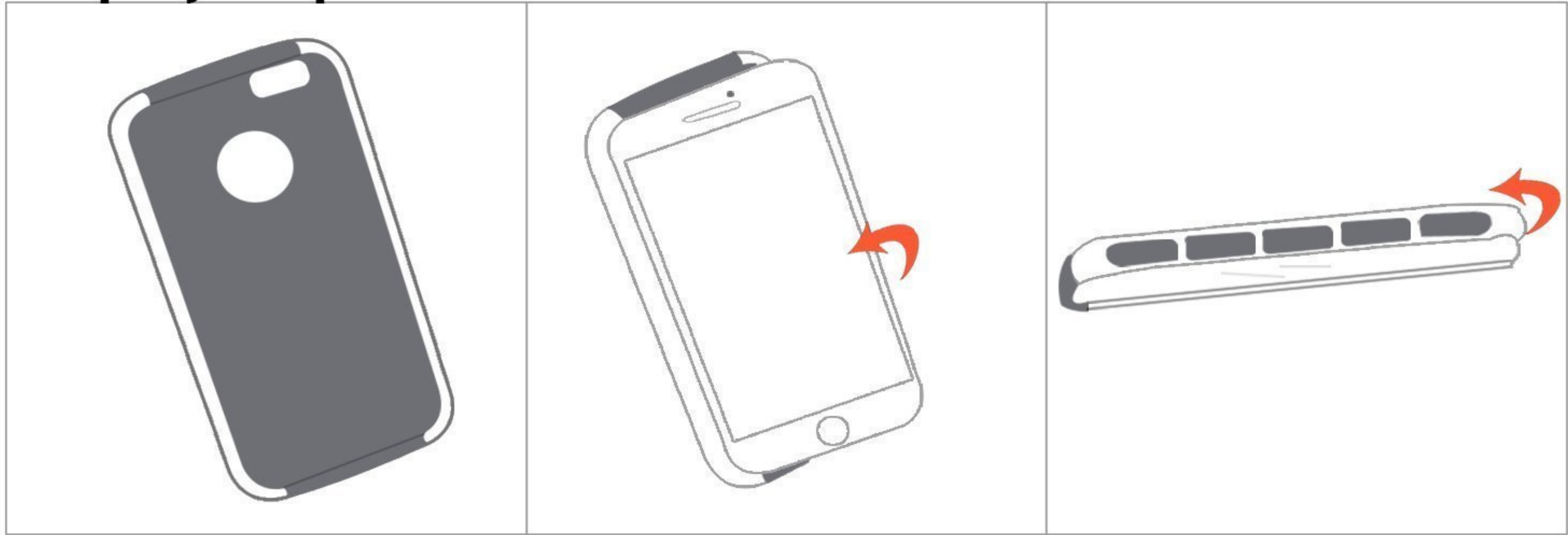


Step by step install instructions

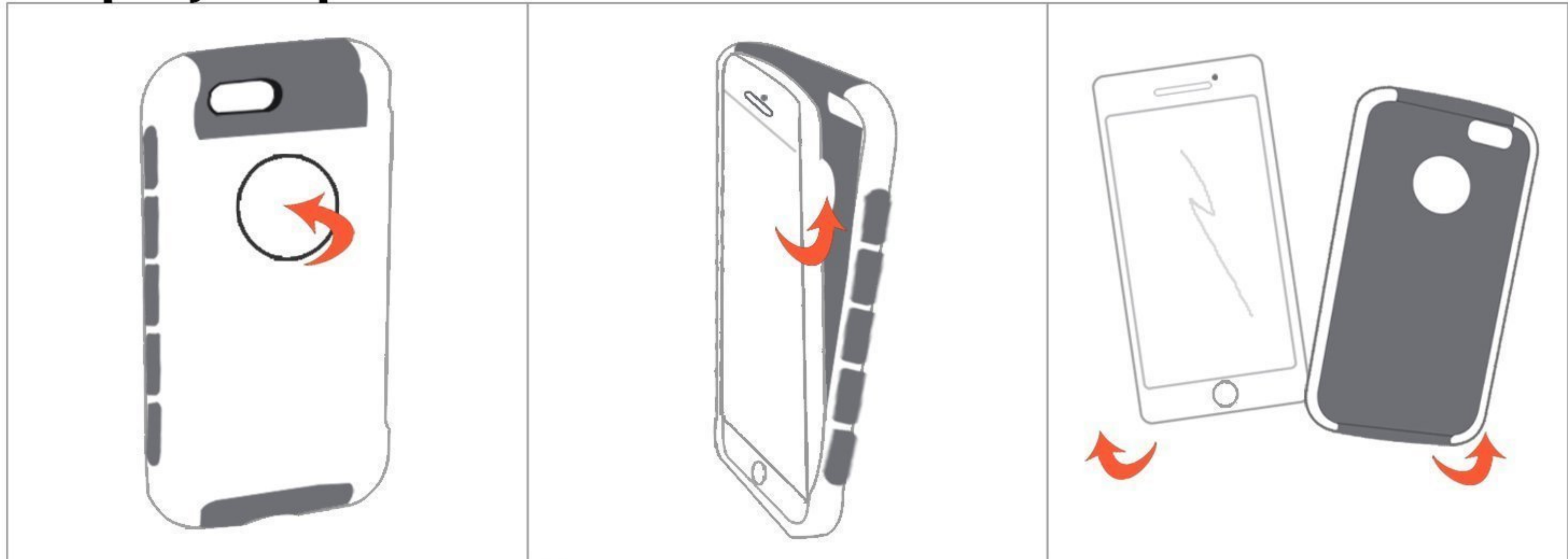


1 Make sure all the TPU and PC are align correctly

2 Insert your device to the phone case

3 Make sure all buttons and case are correctly align

Step by step uninstall instructions



1 Hold the case, the other thumbs presses into the device by the logo hole

2 After a corner out, then put the other corner out

3 Uninstall your device from the case successfully