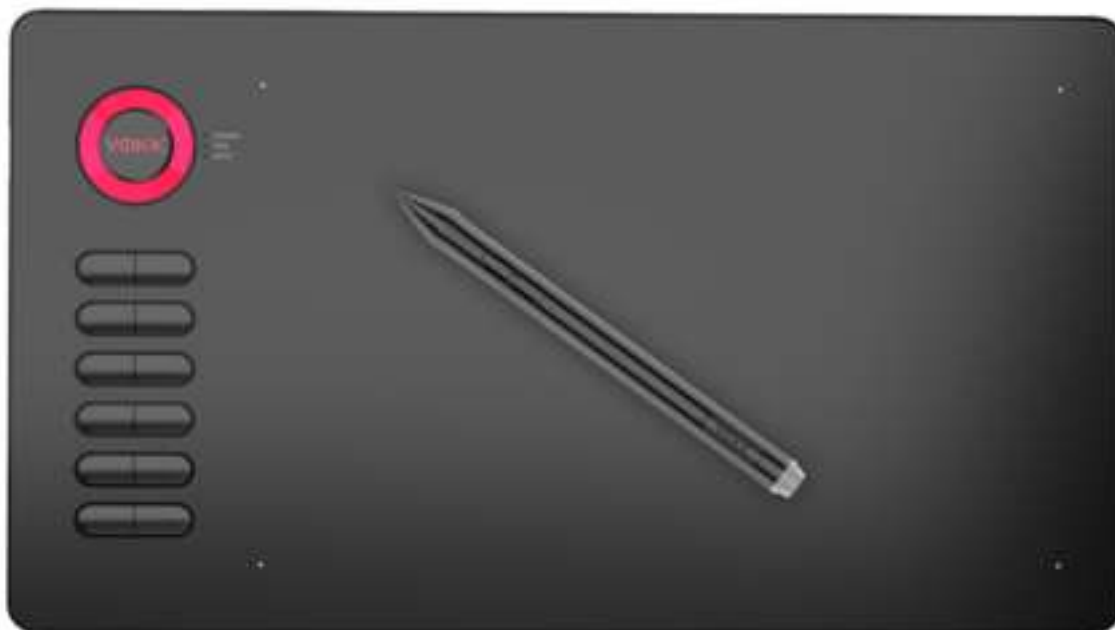


VEIKK



4 colours for choice:Red Grey Yellow Blue

User Manual

BATTERY-FREE PEN TABLET

A15 Graphic Pen Tablet

Mac OS X 10.6 or later
Windows 10/8/7/Vista/XP(32/64 bits)
www.veikk.com

Safety Precautions

- ⊘ **Do not use this product in a control system that requires a high degree of safety and reliability.**

In such a system, this product could negatively affect other electronic devices and could malfunction due to the effect of those devices.

- ⚠ **Turn the power off in areas where use of electronic devices is prohibited.**

On board an aircraft or in any other location where use of electronic devices is prohibited, this product, if left on, could negatively affect other electronic devices.

- ⊘ **Do not use this product in a location frequented by little children.**

Make sure that a child does not put the pen or pen tip in his/her mouth.

The pen tip or side switch cover could be detached and be accidentally swallowed.

- ⊘ **Do not place this product on an unstable surface.**

Placing this product on an unstable or tilted surface or in a location exposed to excessive vibrations could cause it to fall off resulting in injury.

⊘ **Do not place heavy objects on top of this product.**

Do not step or place heavy objects on this product as this could damage it.

⚠ **Avoid high or low-temperature locations for storage.**

Do not store this product in a location where the temperature drops below 5 °C or goes above 40 °C and in locations subject to excessive temperature fluctuations. Failure to heed this caution could result in damage to the product and its components.

⊘ **Do not disassemble.**

Do not disassemble or modify this product as this could expose you to heat, fire, electric shock and injury. Disassembling the product will also void your warranty.

⊘ **Do not use alcohol for cleaning.**

Never use alcohol, thinner, benzene or other mineral solvents as they could discolor or cause deterioration to the product.

⊘ **Do not expose to water.**

Do not place glasses or vases filled with water or other liquids near this product. Exposure to water or liquid could damage the product.

⊘ **Do not place metal objects on this product during operation.**

Placing metal objects on this product during operation could cause it to malfunction or damage it.

⊘ **Do not strike the pen against hard objects.**

Striking the pen against hard object could damage it.

⊘ **Do not handle the pen with soiled hands.**

The pen is a high-precision instrument. Handling it with soiled hands or using it in locations exposed to dust or strong odors may cause the entry of foreign matter which will result in breakdown.

Limitation of Liability

VEIKK shall in no event be liable for damages resulting from fires or earthquakes, those caused by third parties and those arising from user misuse, abuse or neglect.

VEIKK shall in no event be liable for incidental damages-including but not limited to loss of business income, interruption of business activities, corruption or loss of data-that arise out of the use or failure to use this product.

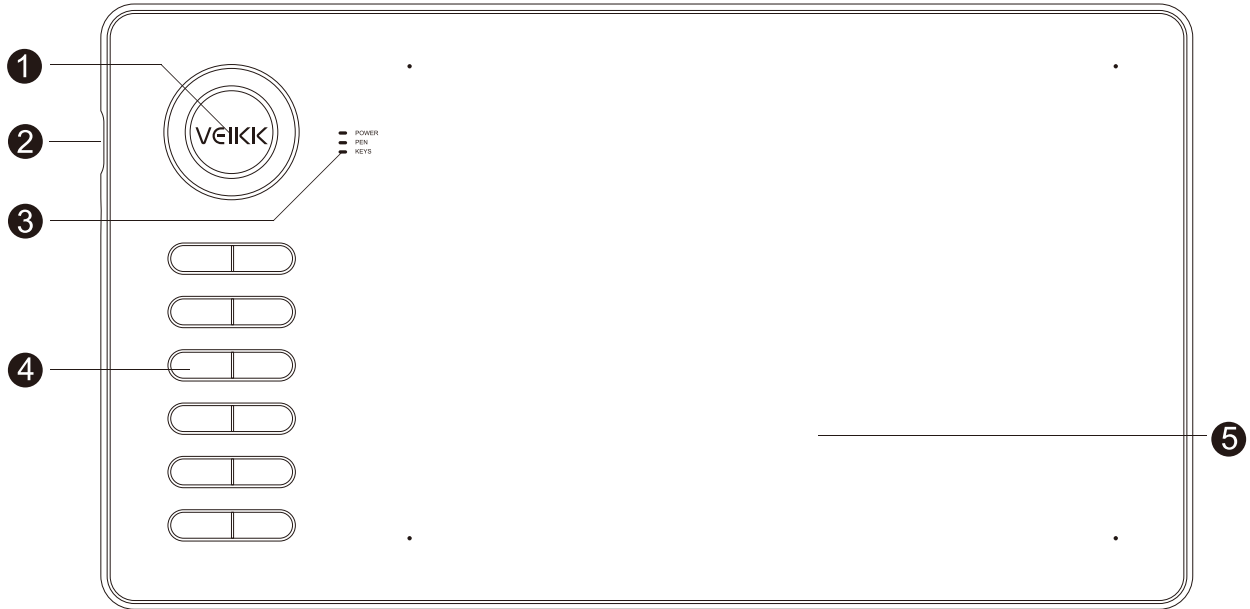
VEIKK shall in no event be liable for damages resulting from uses not documented in this manual.

VEIKK shall in no event be liable for damages from malfunction caused by connection to other devices or use of third party software.

Catalog

1.Product Overview.....	1
2.Packing List.....	2
3.Installing Driver.....	3
4.Tablet Connection.....	3
5.Replacing the Nibs.....	4
6.Specifications.....	4
7.Driver Settings.....	5
8.FAQ.....	15

1.Product Overview

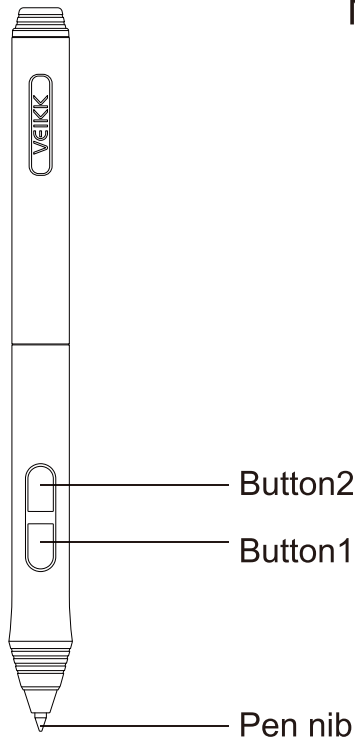


- ① Product Brand
- ② TYPE-C Port
- ③ LED Indicators
- ④ Hotkeys
- ⑤ Active Area

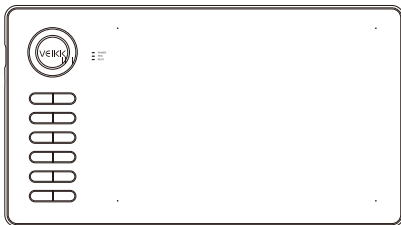
During the normal working state, when tablet connected with the computer, power indicator flashes, then always on; when pen suspended in the reading height, pen indicator flashes, then always on when pen touches the active area; when hotkeys being pressed, key indicator always on.

Pen(P002)

Note: The stylus pen is battery-free, no need to charge or battery.



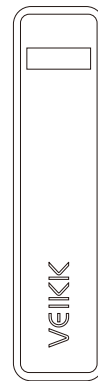
2.Packing List



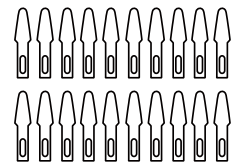
A15 Pen Tablet



Battery-free Pen



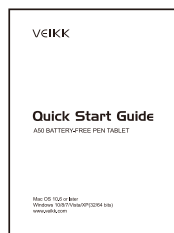
Pen Pocket



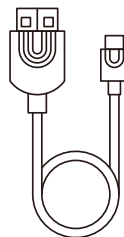
Pen Nibs



Driver Download Reminder



Quick Start Guide



Type-C Cable



Nib Removal



Artist Glove

3.Installing Driver

3.1 OS Support

Windows 10/8/7/Vista/XP(32/64 bits) or later

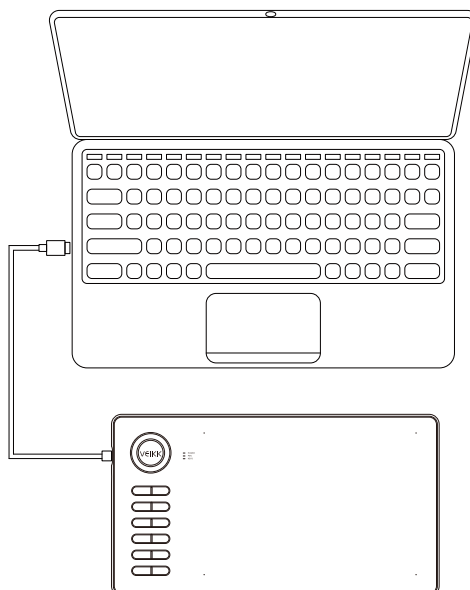
Mac OS 10.6 or later

3.2 Installation

- 1) Before installing driver, please uninstall all tablet drivers from your computer, and keep all antivirus program closed.
- 2) Connect the tablet to your computer before installation(Please refer to 4.Tablet Connection).
- 3) Please download updated driver from www.veikk.com.
- 4) Unzip downloaded file to desktop, and open it.
- 5) Click Set up.exe and follow onscreen instructions.
- 6) After installation then restart your computer.

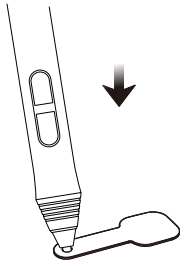
4.Tablet Connection

1. Take out the A15 from the package ,connect the tablet to your computer with USB cable.
2. Open the driver interface, the upper left corner shows the device is connected, indicating that the tablet has been successfully mounted to the driver, you can start using your tablet now.

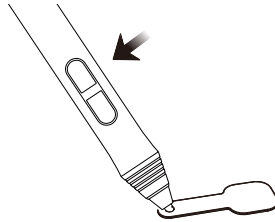


5.Replacing the Nibs

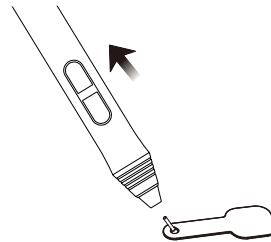
When the pen nib is heavily worn, please replace the nib with the nib removal.



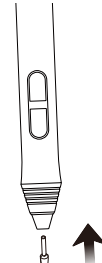
1. Insert the pen nib into the pen holder hole



2. Tilt the pen so that the pen holder can fully catch the pen nib



3. Pull out the nib



4. Insert a new nib into the pen and push it straightly until it stops

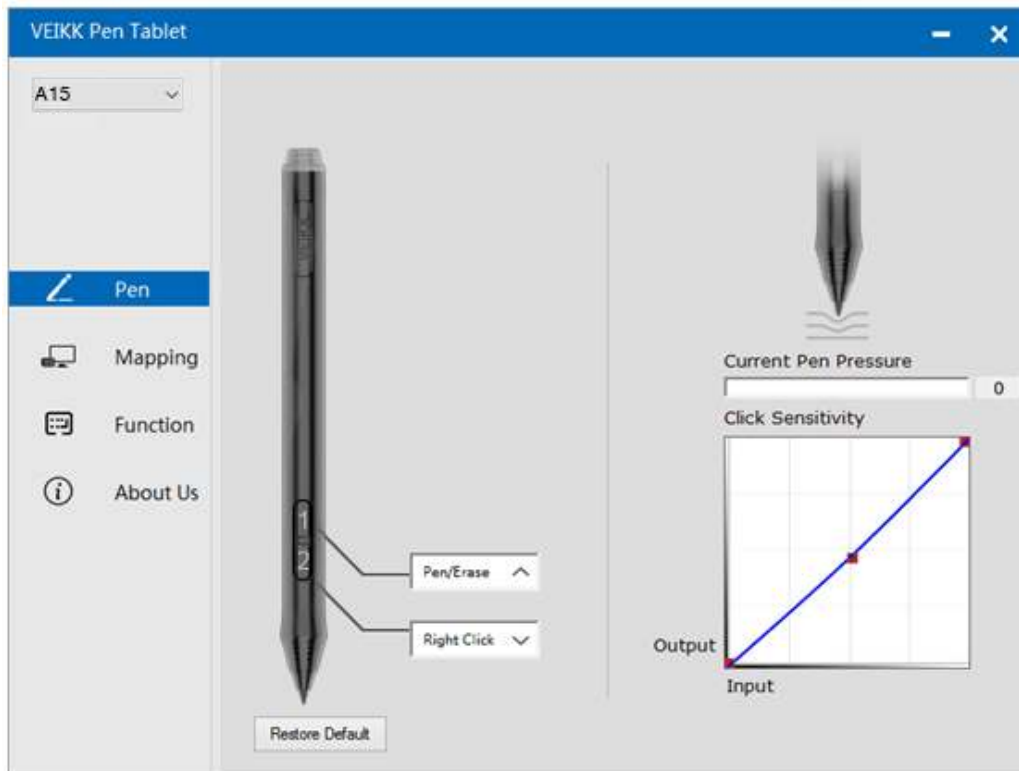
6.Specifications

Model	A15
Dimension	358mm x 200mm x 9mm
Working Area	10 x 6 inch
Pressure Sensitivity	8192 levels
Report Rate	250 PPS
Resolution	5080 LPI
Reading Height	10 mm
Interface	Type-C
Keys	12 Hotkeys

7.Driver Settings

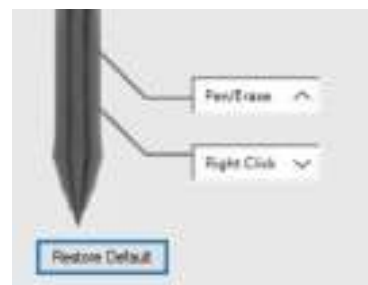
Windows:

7.1 Pen:



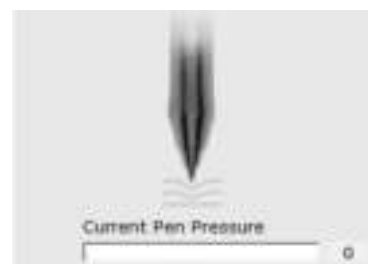
7.1.1 Pen Function Settings

You may customize the functions of your tablet pen's barrel buttons here. Use the "Function Key" option to program custom keystrokes.



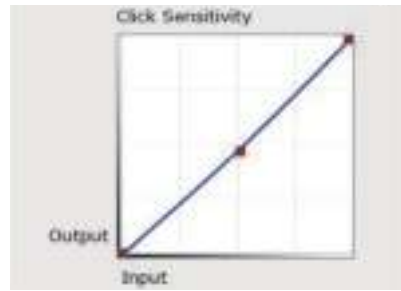
7.1.2 Current Pen Pressure

Current Pen Pressure shows the current pressure level being exerted on your tablet and can be used to test pen pressure.



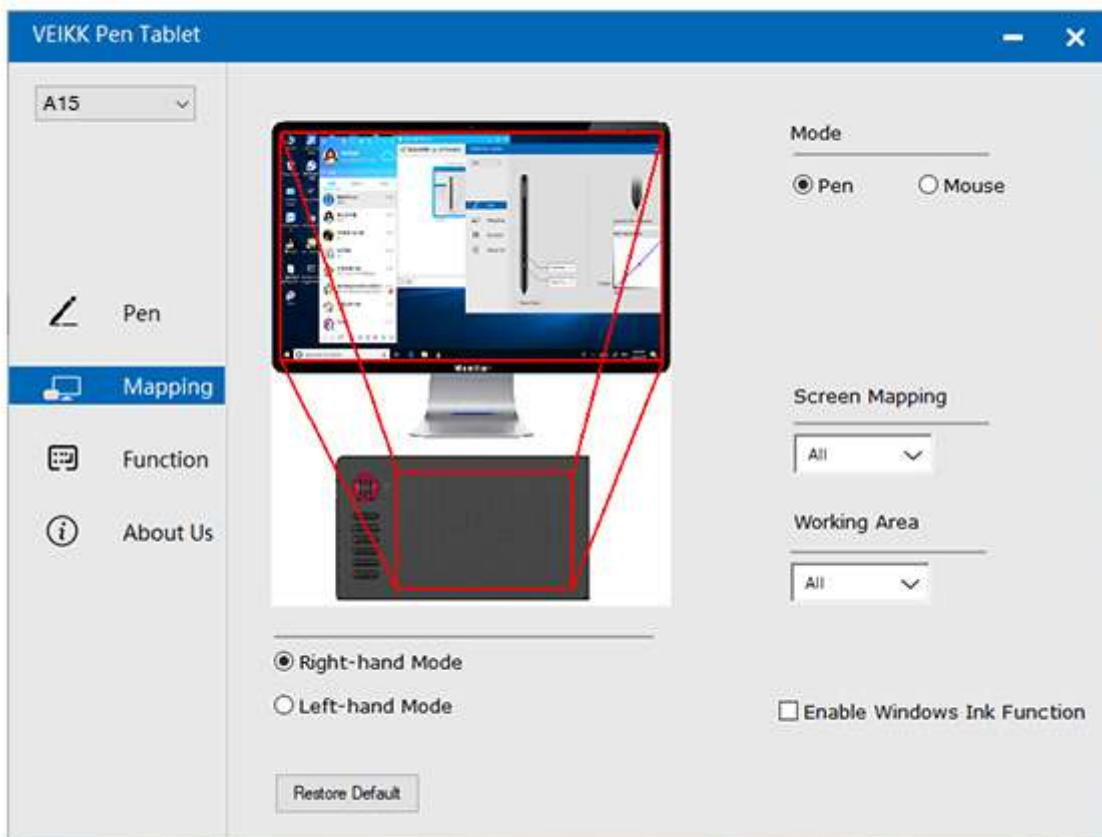
7.1.3 Click Sensitivity

You can adjust pen pressure to “Output” or “Press” sensitivity on here.



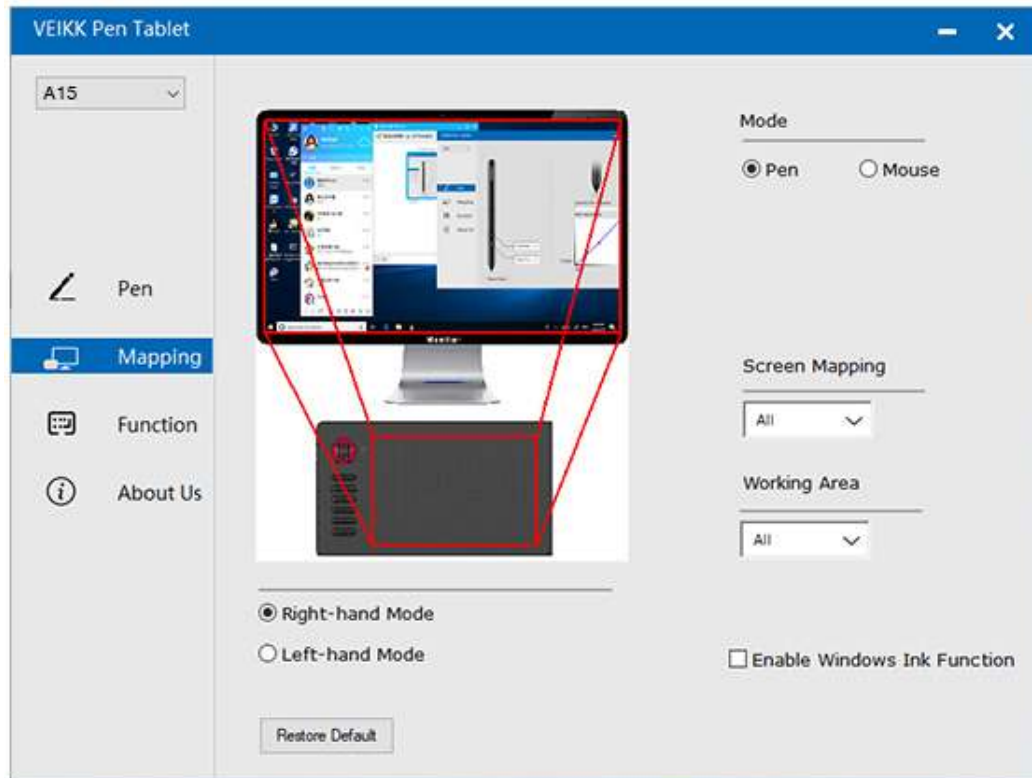
7.2 Mapping

Define the tablet area that will be mapped to the screen area.

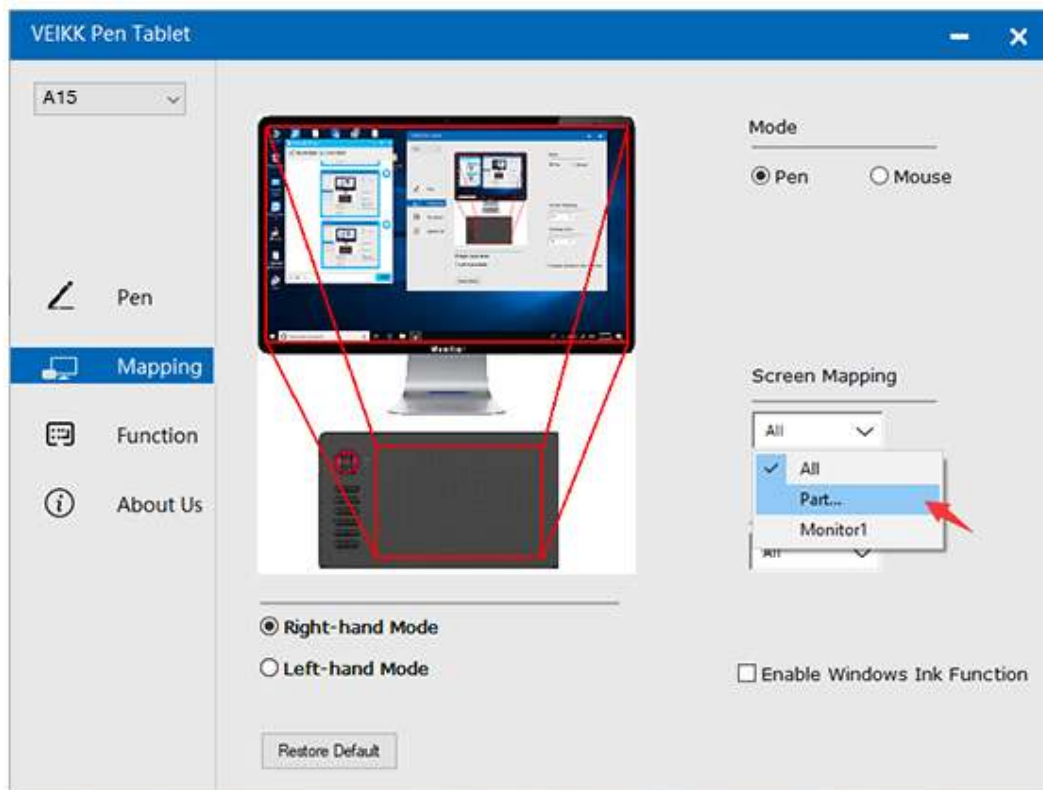


7.2.1 Screen Mapping

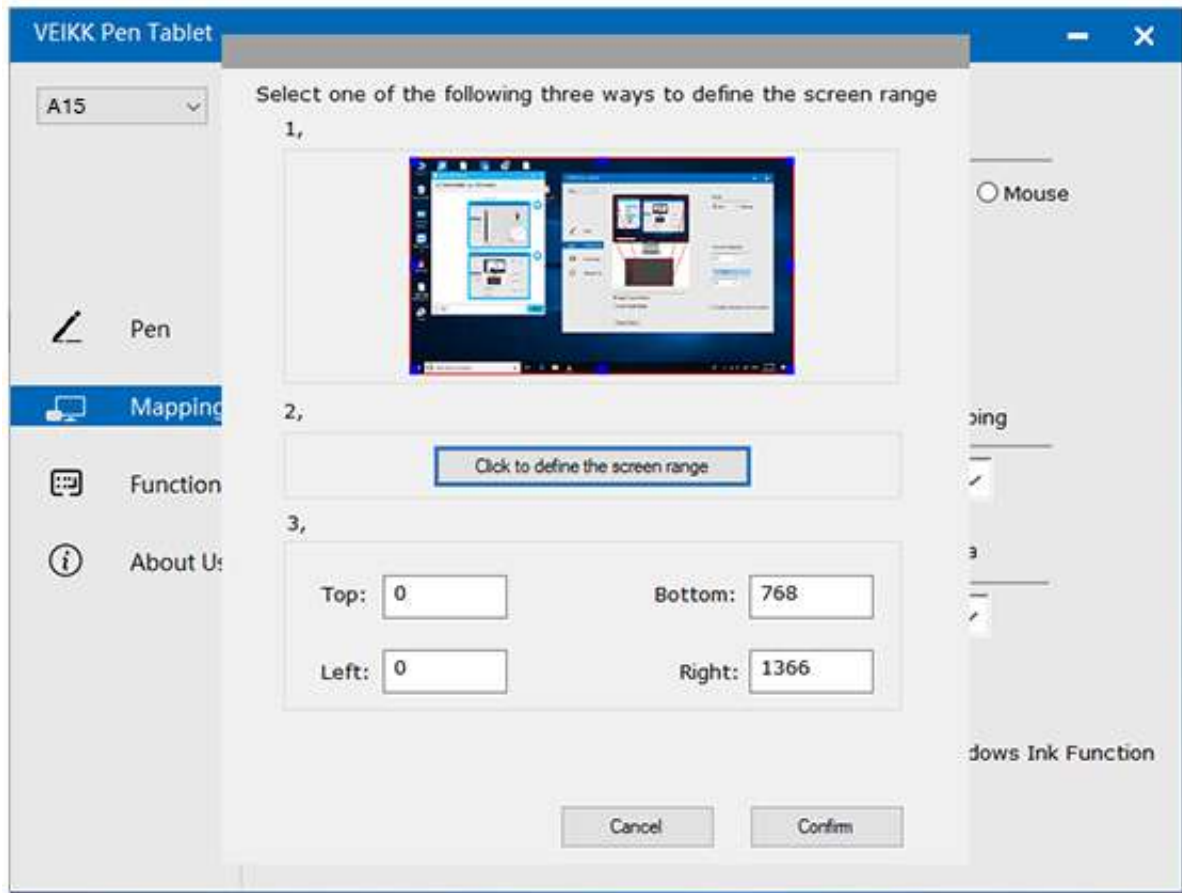
All Area: the entire active area of the tablet. This is the default setting



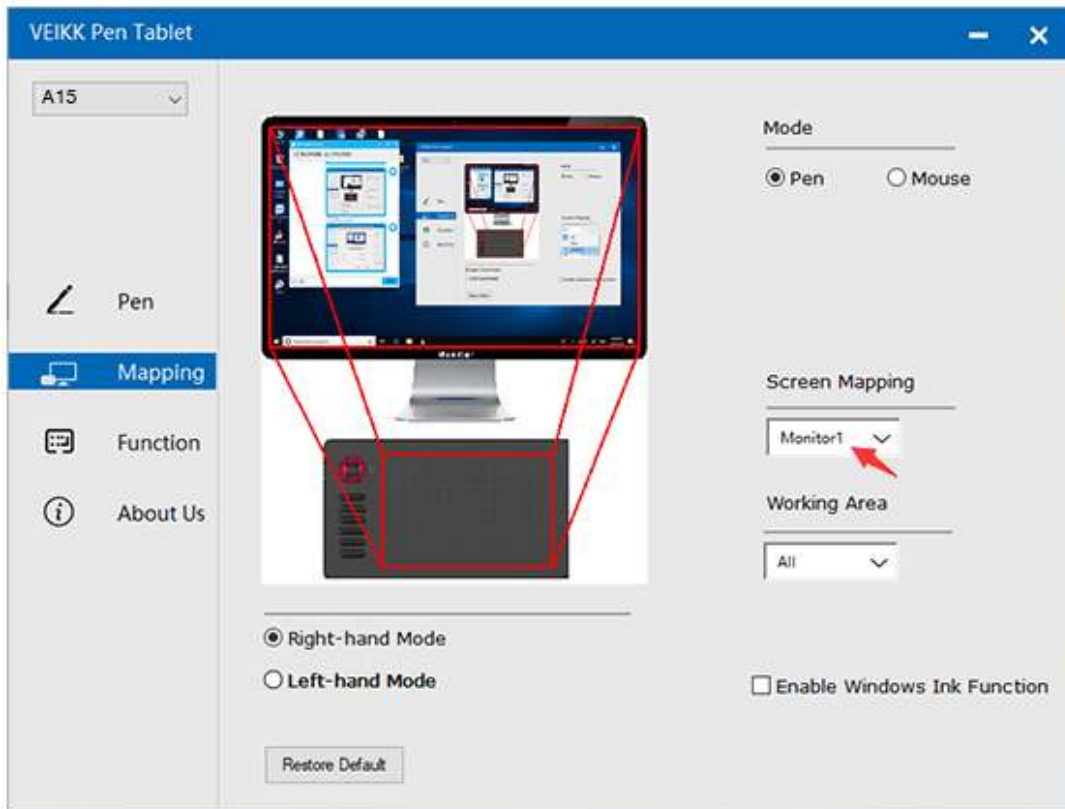
Part Area: Click Part



Then go to the next page, select one of the following three ways to define the screen range.

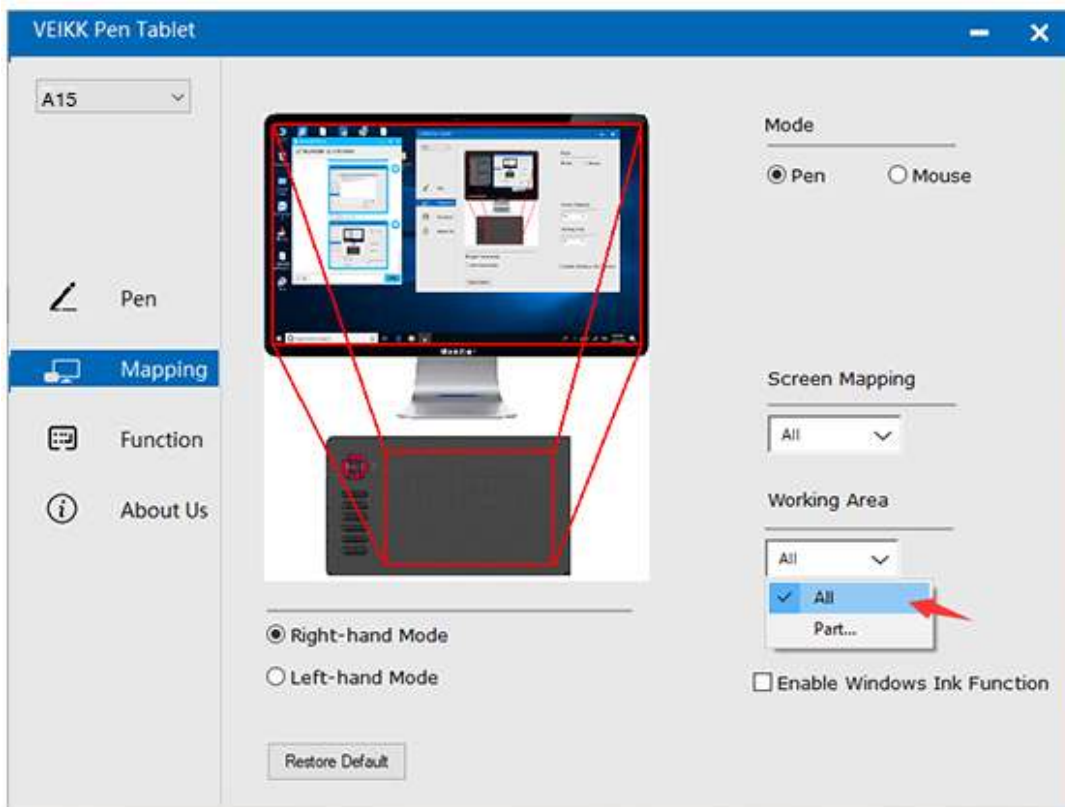


Monitor1: If more than one monitor is in use and you are in extended mode, you need to choose the related monitor on the driver interface which you are going to map to. If your monitors are in mirror mode(All monitors display the same content), the tablet maps to the entire space on each monitor and the screen cursor is displayed on each monitor simultaneously.

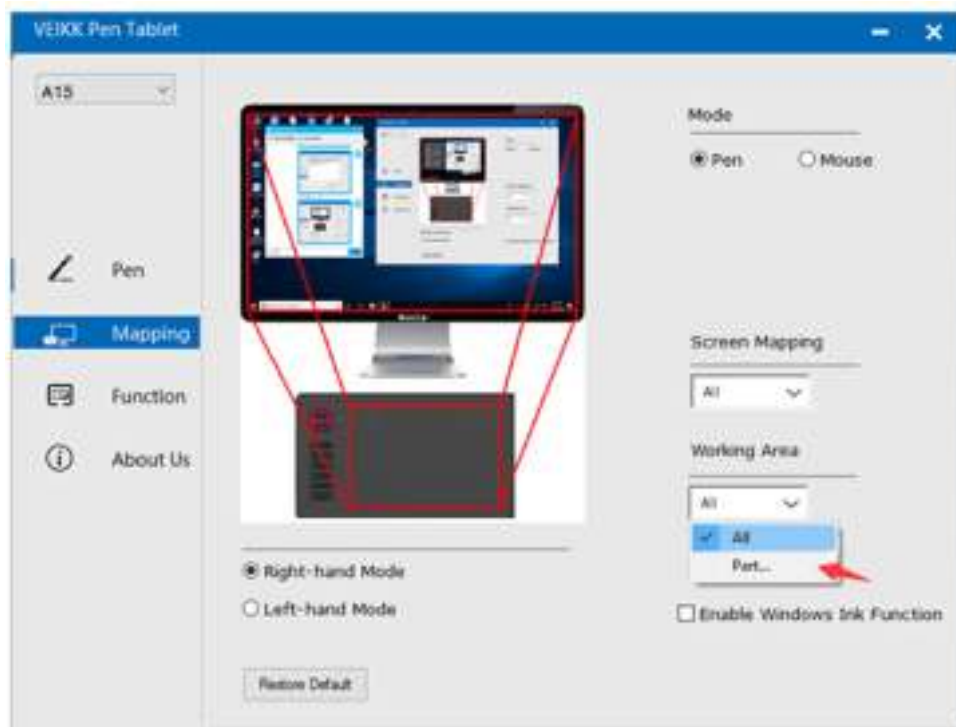


7.2.2 Working Area

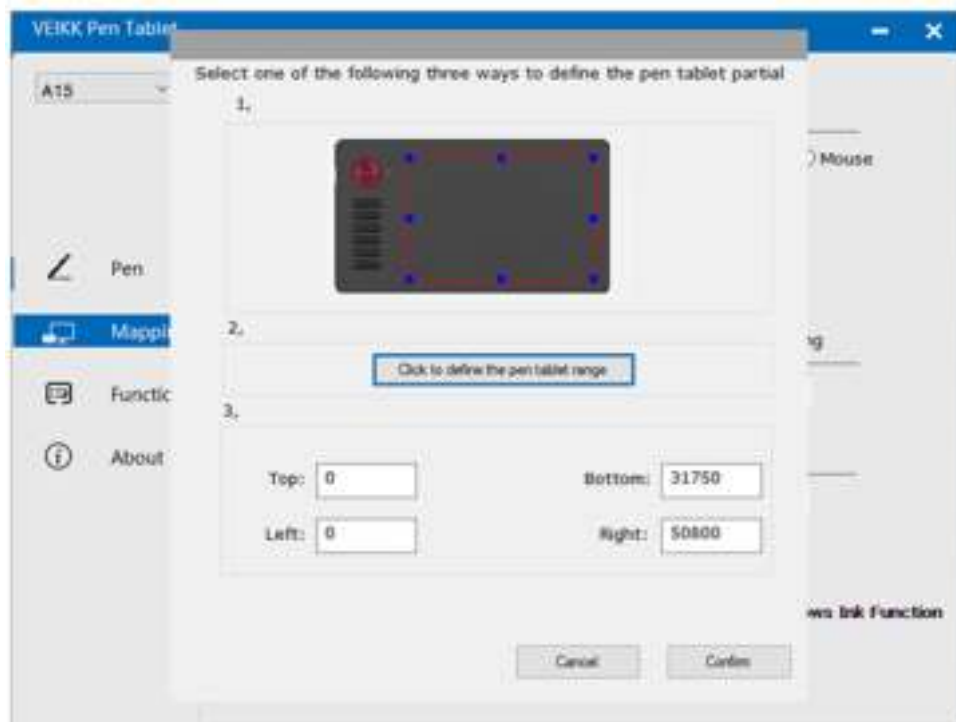
All Area:the entire active area of the tablet.This is the default setting



Part Area:Click Part

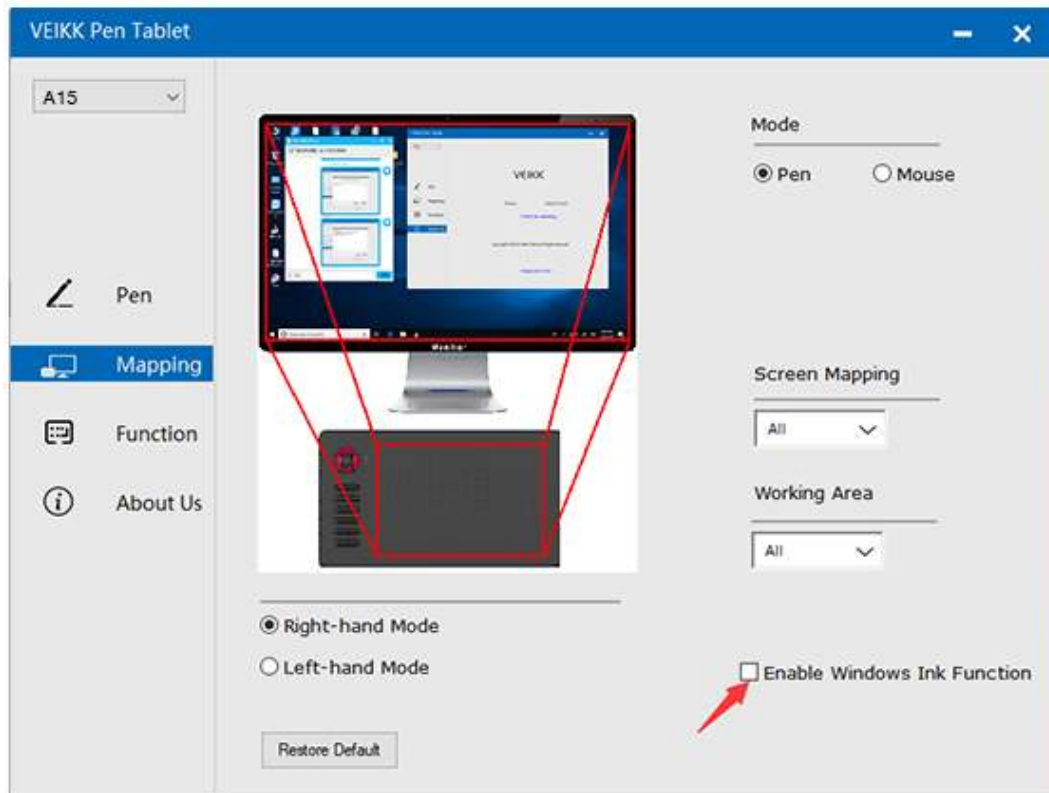


Then go to the next page, select one of the following three ways to define the pen tablet partial.



7.2.3 Enable Windows Ink Function

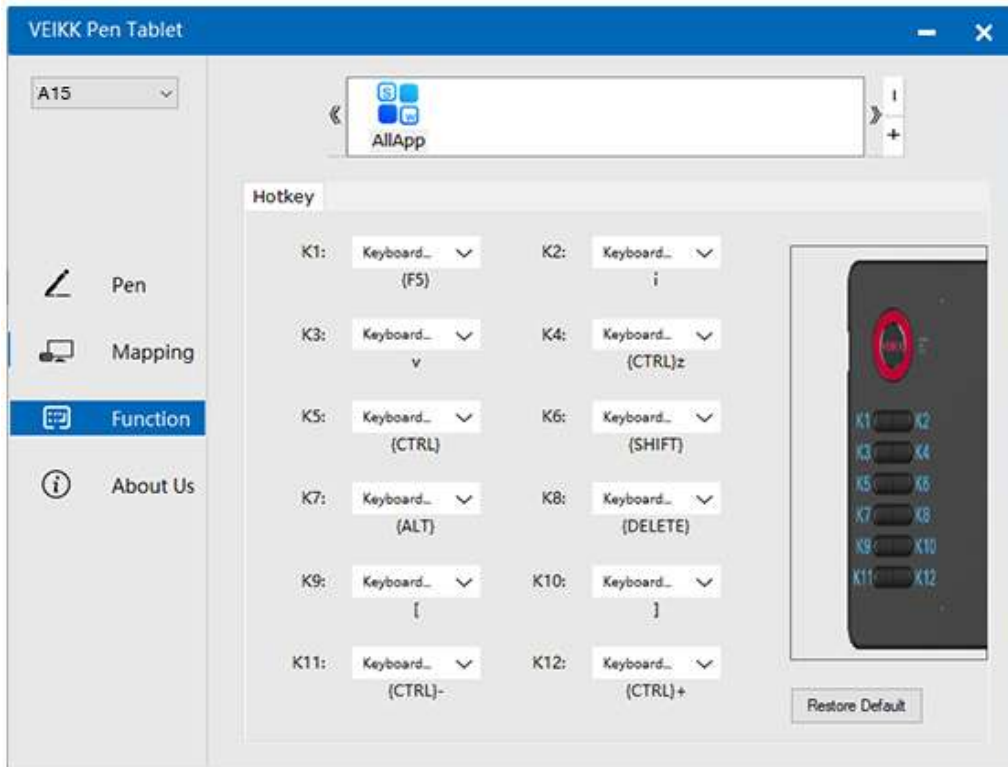
Microsoft Windows provides extensive support for pen input. Pen features are supported in such as Microsoft Office, Adobe Photoshop CC, AI and so on.



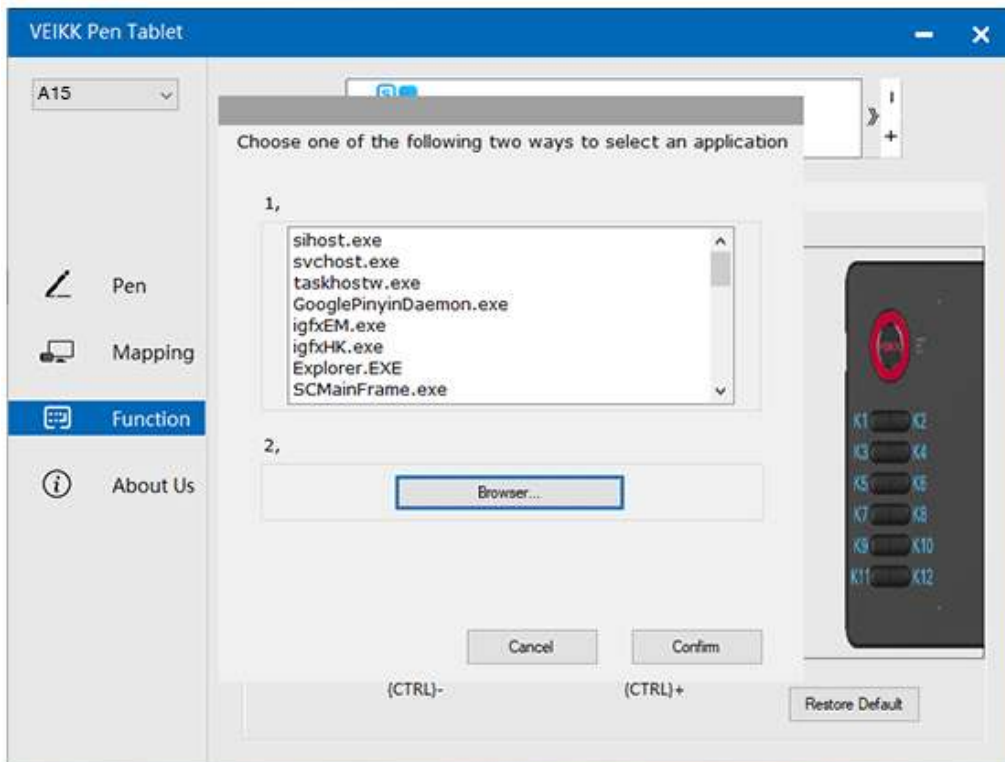
7.3 Function

Customize the Touch Keys

7.3.1 Application List: You can add or remove software by "+" or "-"



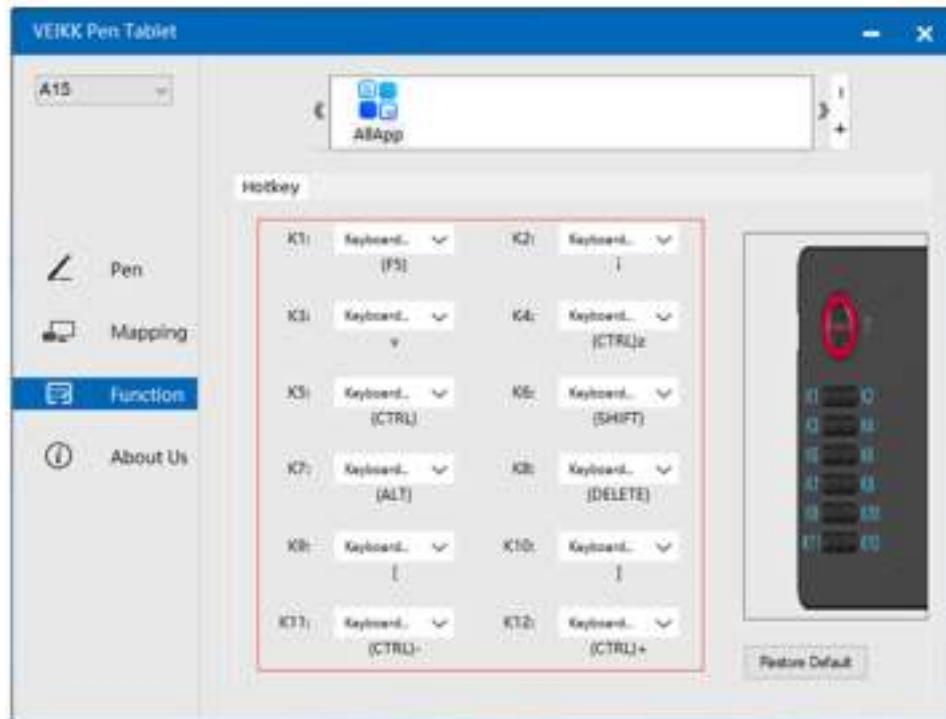
- “+”: Click “+” to add softwares, you have two ways to select an application,
- 1、 Choose from the dropdown
 - 2、 Choose from the browser



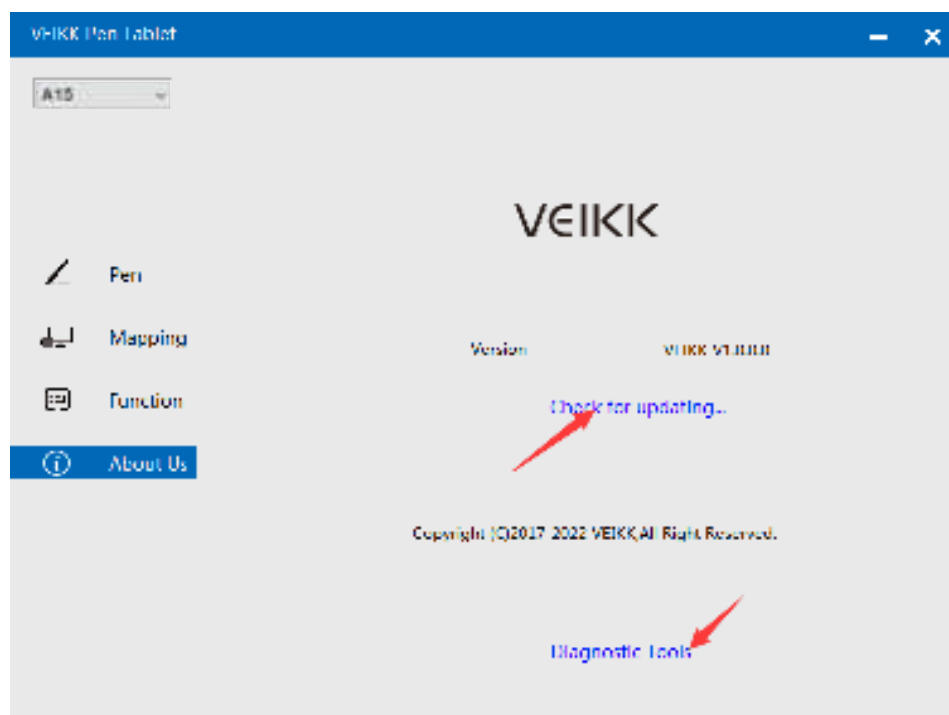
“-”: Click “-” to remove the softwares you added before.

7.3.2 Hotkey

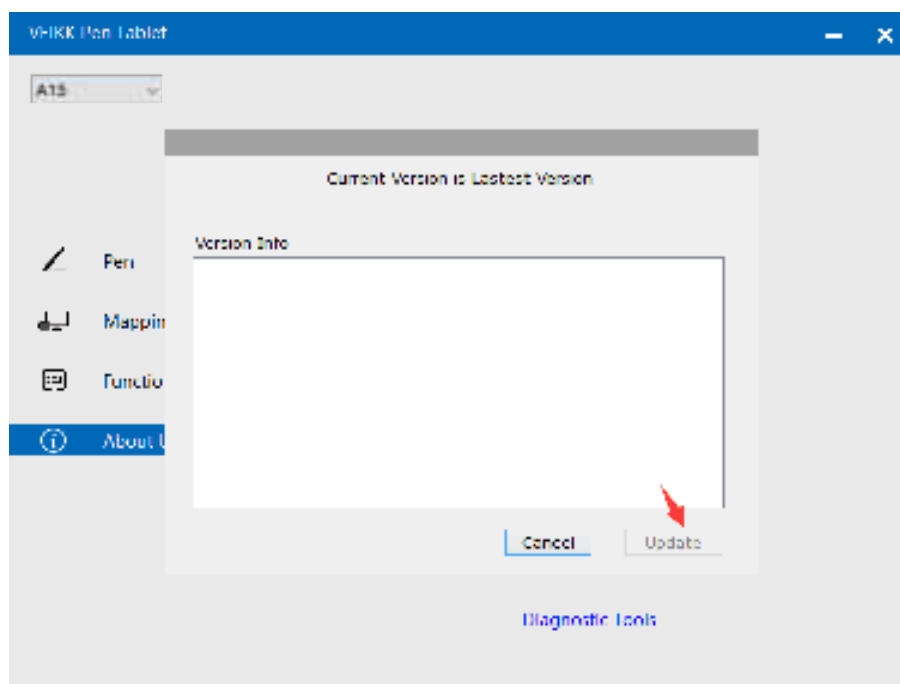
Redefine Hotkey: Click on the title of the button. A dropdown menu will appear with a list of tool options. Choose the one you want to use.



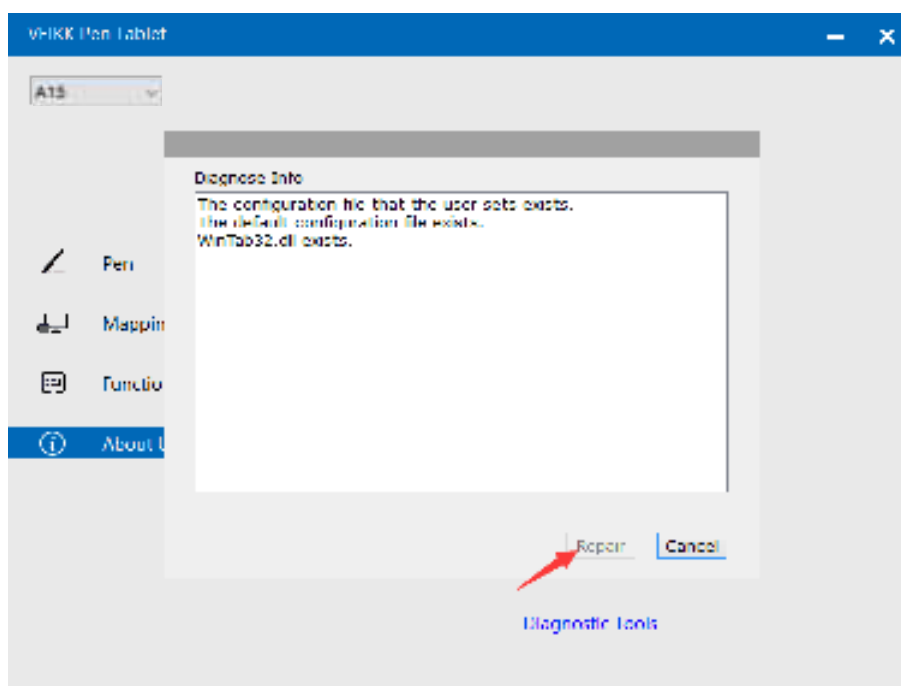
7.4 About Us



Check for updating:If you want to install the newest driver,click”Check for updating”, if there is no response,that means the driver you installed is the newest;if you find newest driver in the list,you just need to update.



Diagnostic Tools:Check for missing key files



Mac:

Note:Driver settings in Mac system are the same in Windows system. Users who use Mac system can take reference to Windows system.

8.FAQ


1.The stylus can't control the cursor.

A. Whether the tablet's status indicator light turn on when the stylus is in contact with the working area? If yes, uninstall the A15 driver and reboot, then connect the tablet to your computer and test your stylus.If the cursor responses to your pen input, the tablet's hardware is functional.Go to our official website

<http://www.veikk.com/download/> download the newest driver and re-install.

B. Connect the tablet then run the driver installation,complete the installation, then reboot.

2.How do i know that the A15 driver installed successfully?

A. After installing the driver,the A15 driver icon  would be visible in your system tray on the bottom-right corner of your screen(Windows OS) and desktop.

B. Or open the driver interface, the upper left corner shows the A15, indicating that the tablet has been successfully mounted to the driver, you can start using your tablet now.

3.How do i determine if a problem is software or hardware related?

A. Connect and install the A15 on a different computer. If the tablet functions properly on the new computer, you are experiencing a software problem.Please uninstall all tablet drivers(including A15 driver)from your computer, download the newest driver from our official website <http://www.veikk.com/download/> and then re-install.

B. The A15 indicator lights will help you determine if an issue is hardware related.

When functioning properly,the blue status indicator light will light up when the stylus pen is in range of or touching the tablet's working area.

4.There is no pressure in the graphics software, but the cursor moves.

You may have installed other tablet drivers or opened the drawing software when installing the driver. Please uninstall all drivers and close the drawing software, then re-install A15 driver.That is better to restart your computer after completing the installation.

5.The stylus pen does not work.

- A. Make sure you are using the pen that originally came with your tablet.
- B. Make sure you installed the driver correctly.

6.The computer can't recognize the tablet.

Make sure the USB port is functional, if not, please change to another USB port.

VEIKK

Any questions, please contact us

Beijing Veikk E-commerce Co., Ltd.

Email : service@veikk.com

Skype : veikk service

Website : www.veikk.com