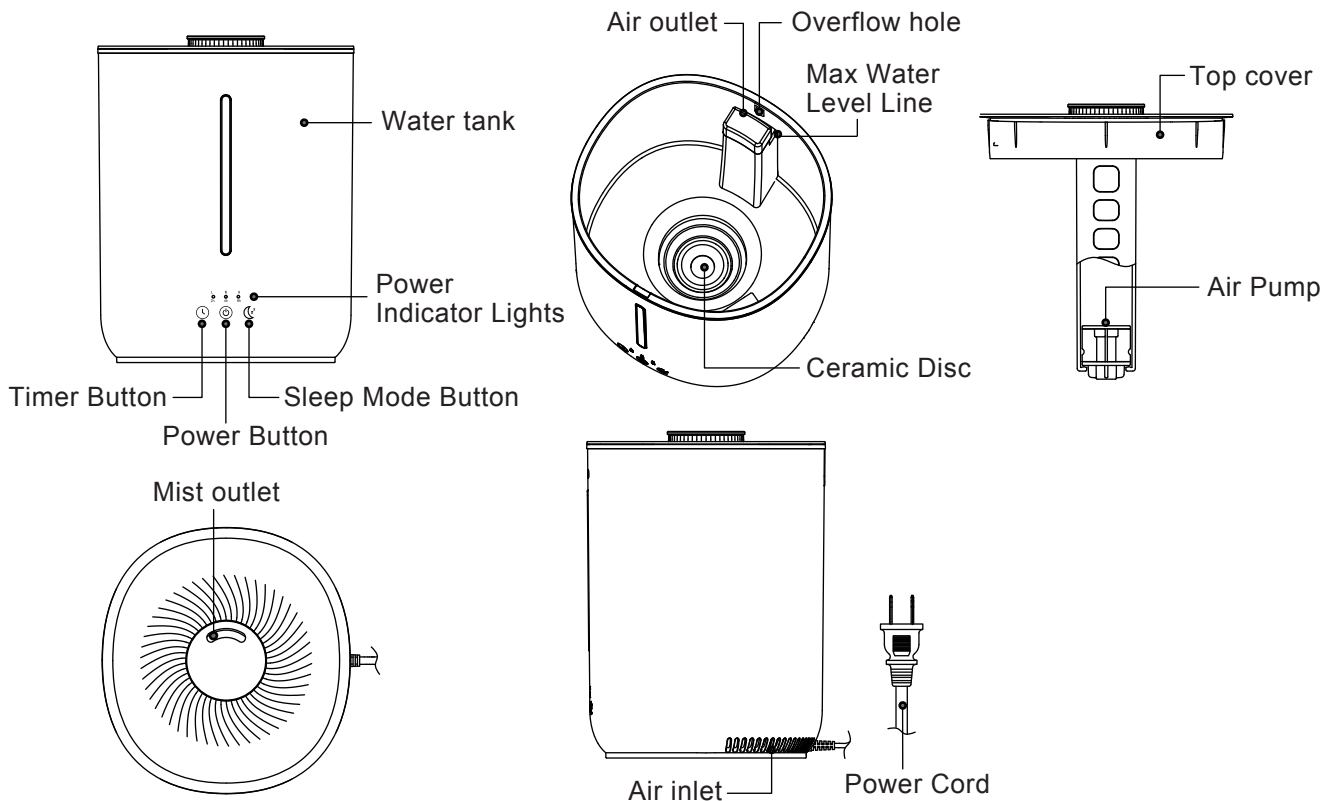


# SCK-2A28A # INSTRUCTION MANUAL HUMIDIFIER

## NAMES OF PARTS



## FEATURES

Essential Oil Diffuser and Cool Mist Humidifier Add essential oil directly to the water and enjoy therapeutic benefits.

1. Water Capacity: 2800 mL
2. Three Buttons: power button, light button and sleep, mode button
3. Continuous Run Time:
  - High Mist Intensity: Up to 8 hours
  - Low Mist Intensity: Up to 20 hours
  - \* Run time will vary depending on humidity levels and other external factors.
4. Mist Shut-Off Timer: 2, 4, and 8 hours
5. Light Mode: warm white, or off
6. Sleep Mode: all lights off
7. Automatic safety shut-off when water at low level

## CARE & MAINTENANCE

Only use the power cord supplied with the unit.  
Always unplug the power cord from electrical outlet before filling.  
Essential oil should not come in contact with the exterior surface of unit.

Do not submerge unit into water to avoid risk of electric shock.  
Do not put fingers, hands, or any object into the unit while operating.  
Do not attempt to adjust or repair the unit.  
Do not touch the water while unit is operating.  
Do not fill water through the Mist Outlet or the Air Outlet.  
Do not place the unit near heat sources or direct sunlight.  
Use two hands when moving your humidifier.  
Use this unit only as intended as described in this manual.

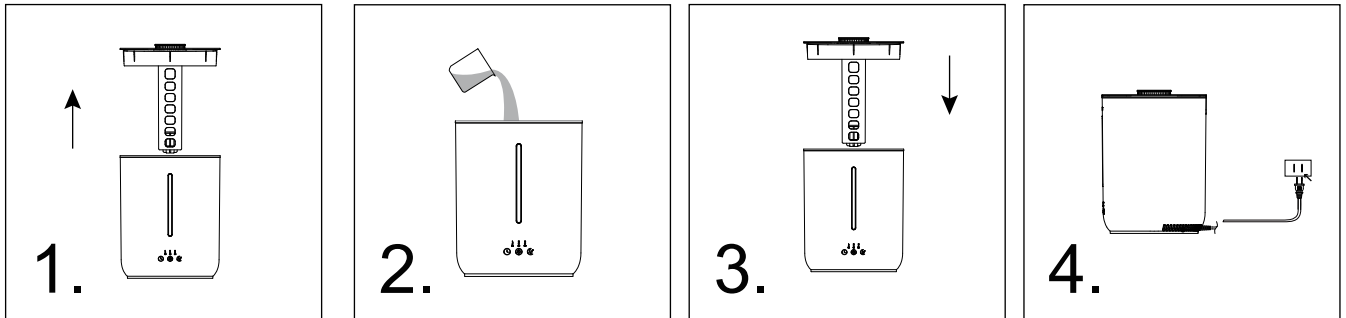
### TO CLEAN:

Empty water from the Water Tank away from the Air Outlet. The Ceramic Disc should not come in contact with any hard or sharp objects. To remove possible buildup, rinse with a white vinegar and water solution. Dry thoroughly with a soft cloth. Do not use strong cleaning agents.

## INSTRUCTIONS FOR USE

Place unit on a flat, water-resistant surface as moisture may cause damage to carpet, finished floors, furniture, or walls.

1. Remove the Top Cover from the Water Tank.
2. Fill the Water Tank with tap water up to the Max Water Level Line. Do not overfill.  
Add approximately 10 drops of essential oil per 1 liter of water into the Water Tank.
3. Replace Top Cover onto the Water Tank.
4. Plug the Power Cord into an electrical wall outlet. It will take a few minutes for the essential oil to blend with the water before fragrance begins diffusing.



### 5. Function Characteristics

#### ■ Power Button:

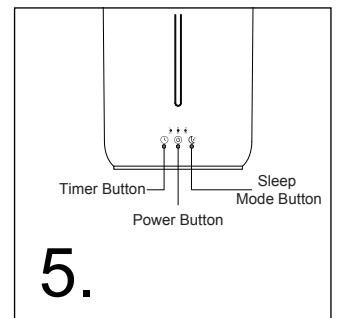
- 1<sup>st</sup> push: continuous diffusion on high mist intensity with “H” power indicator light and warm white light on;
  - 2<sup>nd</sup> push: diffusion changes to medium mist intensity with “N” power indicator light on;
  - 3<sup>rd</sup> push: diffusion changes to low mist intensity with “L” power indicator light on; Cyclic control.
- Note: push and hold Power Button for 2 seconds to turn off the unit.

#### ■ Timer Button:

- 1<sup>st</sup> push: continuous diffusion for 8 hours, then off;
- 2<sup>nd</sup> push: continuous diffusion for 4 hours, then off;
- 3<sup>rd</sup> push: continuous diffusion for 2 hours, then off;
- 4<sup>th</sup> push: continuous diffusion without timer; Cyclic control.

#### ■ Sleep Mode Button:

- 1<sup>st</sup> push: turns light off
  - 2<sup>nd</sup> push: turns light on; Cyclic control.
- Note: push and hold this button for 2 seconds to enter sleep mode with all the lights off, and the unit will keep the original mist intensity and timer;



## NOTES

This appliance can be used by children aged from 8 years and above and persons with reduced physical, sensory or mental capabilities or lack of experience and knowledge if they have been given supervision or instruction concerning use of the appliance in a safe way and understand the hazards involved Children shall not play with the appliance.

Cleaning and user maintenance shall not be made by children without supervision.

If the supply cord is damaged, it must be replaced by the manufacturer, its service agent or similarly qualified persons in order to avoid a hazard.

When the appliance is not in use and before cleaning, unplug the appliance from the outlet firstly.

Care should be taken when using the appliance due to the emission of hot water vapour.

Unplug the appliance during filling and cleaning.