

## CAT HAMMOCK

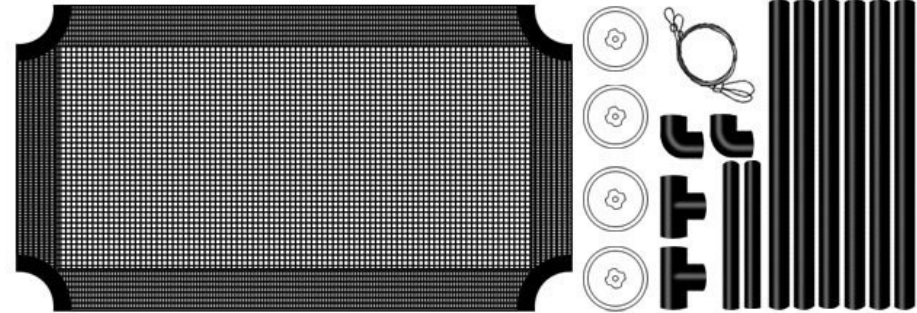
Size: 67cm\*39.5cm  
26.4 inches \* 15.6 inches

Safe load: 25 kg

Installation location: smooth surfaces such as glass and ceramic tiles

Material: screw sucker, PVC pipe, mesh cushion, steel wire

Product features: four powerful screw suction cups, performance is better than ordinary suction cups, strong bearing capacity, no falling off, perfect solution to the trouble of easy falling off of ordinary suction cups, splicing design and small packaging, suitable for international logistics, reducing logistics costs



The box contains accessories:

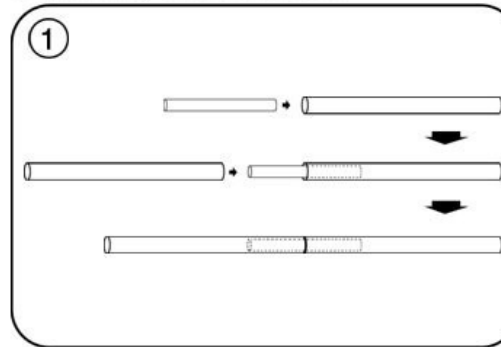
- PVC net mat\*1
- 2.5cm tube\*6
- 2cm tube\*2
- Tee tube\*2
- Elbow\*2
- Screw sucker\*4
- Wire rope\*2
- Installation manual\*1

## COLORFUL PACKAGE

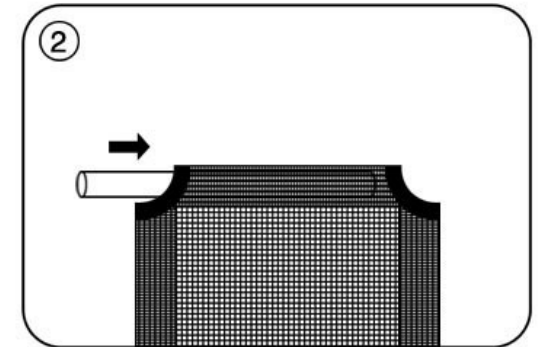


Short packaging box, suitable for international logistics delivery, saving logistics costs

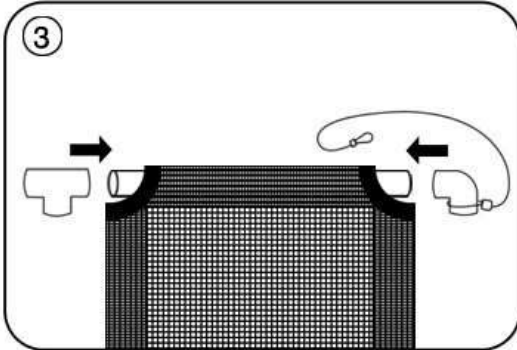
Assembly instructions:



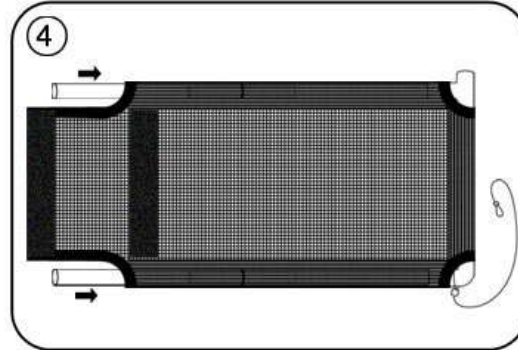
1. Use 4 2.5cm tubes and 2 2cm tubes to connect into two long tubes according to the above picture



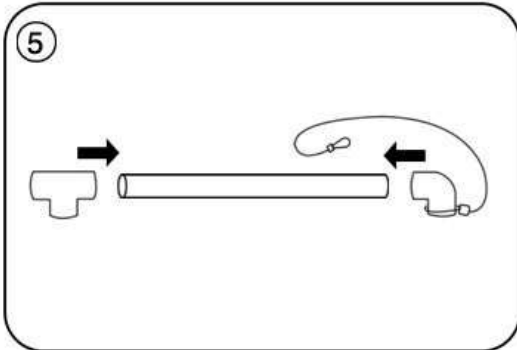
2. Insert a 2.5cm short tube into the short side of the mesh cloth



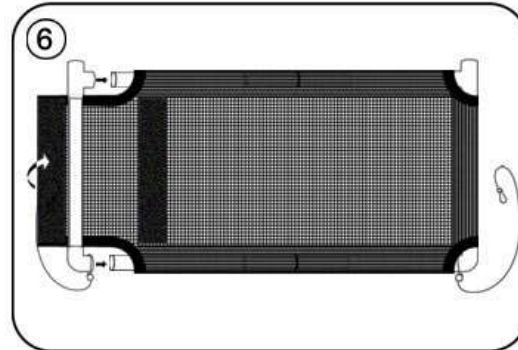
3. Connect the three-way pipe and the elbow to the two ends of the pole, and take one side of the large hole of a steel wire rope and put it on the elbow



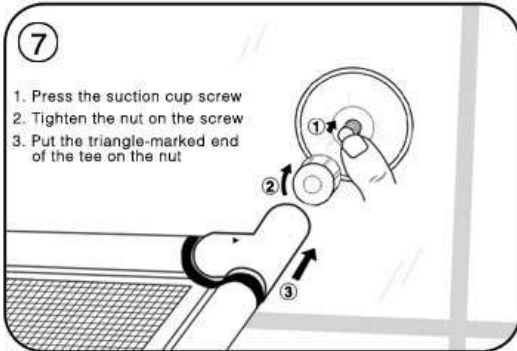
4. Insert the two spliced long pipes into the two sides of the mesh length, and connect them to the elbow and the three-way pipe



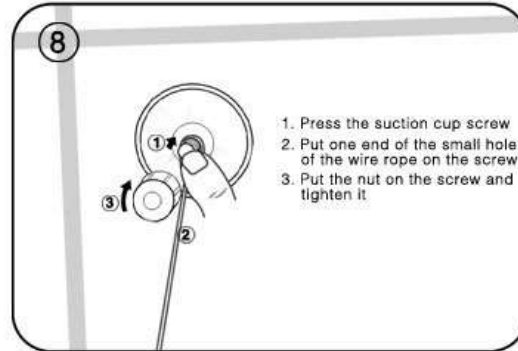
5. Splice the three-way pipe and the elbow to a 2.5cm diameter pipe, and then use one end of the large hole of the steel wire rope to fit the elbow



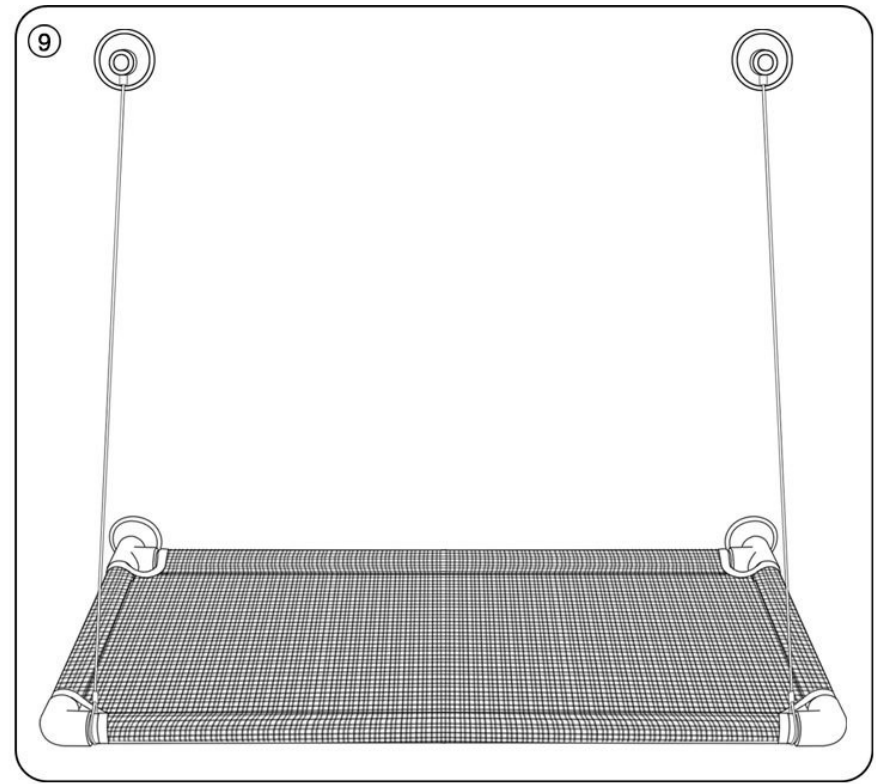
6. Splice the spliced pipes to the two long pipes in the corresponding direction in Figure 5, and then fold the Velcro to wrap the short pipe and stick it on.



7. Find a suitable place to install the hammock, and install the spliced grid skeleton according to the schematic steps



8. Follow the steps in the schematic diagram to find a suitable location to install the wire rope fixed above



9. After the assembly is completed, it can be used safely within 25KG