

# TEESA®

## Rechargeable 2-in-1 Stick Vacuum Cleaner

### SWEeper 7000

TSA5040



Bedienungsanleitung

Owner's manual

Εγχειρίδιο Χρήσης

Instrukcja obsługi

Manual de utilizare

Návod na použitie

CS

DE

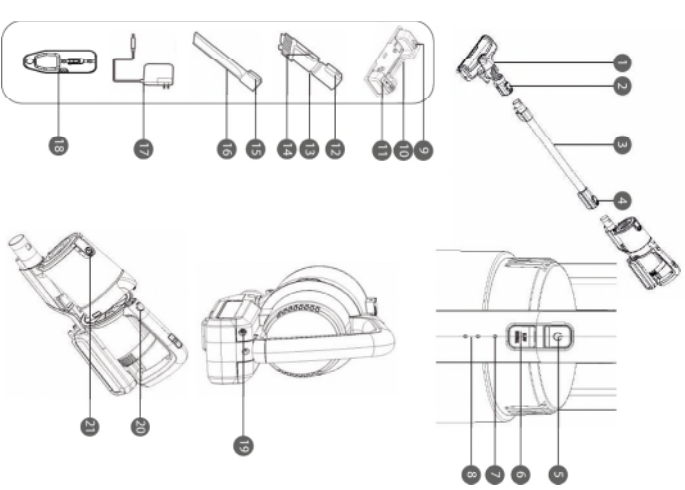
EN

GR

PL

RO

SK



- When fully charged, the battery level indicator will turn off after a minute.
- Do not remove the battery from the device – it may void the warranty.

**Notes**

- The charger may become warm during charging – this is normal.
- Before first use make sure that the battery is fully charged.
- Use only the included charger to charge the device.
- After each use fully charge the battery and store the device fully charged.

**OPERATION**

**Note: Before using the appliance, check that no sharp object has become attached to the wheels and the roller brush to avoid scratching delicate floors and ensure maximum vacuuming performance.**

- Press the power button to turn on the device.
- By default, when turned on, the device will work in normal mode (the mode indicator will be on).
- To change the mode, press the mode button (in slow mode the LED will not light up).
- Start vacuuming.
- To turn off the device, press the power button.
- The electric brush has LEDs located inside the front part of the housing. The LEDs light up when the vacuum cleaner is on, regardless of the selected mode.

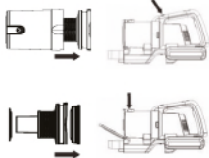
**Vacuuming with mopping\***

- Check the availability to vacuum and mop simultaneously using a mopping attachment. Make sure the pad is attached to the bottom of the water tank before use, not exceeding the maximum water level line in the tank.
- First, open the mopping attachment, insert the electric brush in a properly shaped place on the mopping attachment.
- To attach the mopping attachment, insert the electric brush in a properly shaped place on the mopping attachment.
- These elements connect with each other with strong magnets.
- To moisten the microfiber pad, place the electric brush with the tank on the surface to be cleaned and press the water ejection button on the left of the tank with your foot. Each press releases a small amount of water into the pad.
- After finishing work, remove the mopping attachment by pulling it out of the electric brush.
- Pour out the rest of the water from the tank through the hole that was previously filled with water.
- After mopping with the pad, warm water. Do not wash in the washing machine.
- After finishing work, do not store the vacuum cleaner on the mopping attachment.

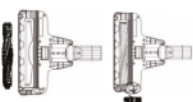
\*Mopping attachment T540118 is not included in the set. It is available for purchase in our online store [tesa.pl](http://tesa.pl) or [rebelectro.com](http://rebelectro.com).

**CLEANING AND MAINTENANCE****Dust container**

- Press the dust container release button and then pull the container.
- To split the release button, press the dust container release button. The container lid will open. When doing the lid, make sure the catch locks in place.
- It is recommended to clean the inside of the container. After pulling it out, remove its lower part from the top by turning the rim under the protective mesh.
- There is a filter in the upper part of the container, which must also be removed before cleaning the remaining elements of the container.
- The filter can be cleaned by dusting it off or rinsing it under running water.
- All the elements can be cleaned under running water. Dry them thoroughly before next use.

**Electric brush**

- To keep the brush parts in good condition, clean the rotating brush inside every few uses.
- To disassemble it:
  - Disconnect the electric brush from the tube or vacuum cleaner.
  - Turn it upside down.
  - Looking from the front of the electric brush, there is a flap that must be removed on its right side.
  - Then pull out the brush oil and clean it from dirt.

**STORAGE**

- Before storing, make sure the device is clean, dry and fully charged.
- Store the device in a dry place.
- The set includes a mounting plate that allows the vacuum cleaner to be stored on the wall in an upright position.

**BASIC FEATURES**

- Cordless hand held vacuum cleaner
- 2 performance levels
- Bedlight of cleaning surface
- Battery level indicator
- Easy emptying of dust container
- Maneuverable, lightweight and easy to use
- Ergonomic handle
- Mountable on the wall

**TECHNICAL DATA**

- Power: 150 W
- Sound power level: <math>\leq 82</math> dB
- Sound power capacity: <math>0.31</math>
- Start power: <math>\approx 24</math> V
- Ambient: <math>\approx 8.5</math> l/s
- Vacuum: <math>\approx 7</math> kPa

**POWER SUPPLY**

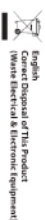
- Battery: 25.2 V, 2000 mAh
- Battery type: Li-Ion
- Charging time: up to 6 h
- Maximum runtime:
  - Level 1 (low): 40 min
  - Level 2 (high): 16 min
- AC charger:
  - Input: AC 100 – 240 V, 50/60 Hz
  - Output: 23.2 V, 500 mA

**PHYSICAL PARAMETERS**

- Weight: 2.3 kg
- Dimensions: 119 x 21.5 x 25.5 cm

**IN SET**

- AC charger
- Electric brush
- 2-in-1 crevice brush
- Crevice tool
- Mounting plate
- Mounting set
- User's manual



**English**  
**Owner's Manual of This Product**  
**Waste Electrical & Electronic Equipment**

Applicable in the European Union and other European countries with separate collection systems. This marking allows you to separate your waste electrical and electronic equipment from other types of waste and recycle it responsibly to promote the sustainable reuse of material resources. Household waste should not be mixed with e-waste such as televisions, washing machines, fridges, air conditioners, etc. It is important to check the terms and conditions of the purchase contract. This product should not be mixed with other commercial wastes for disposal.

Made in China for LECTRO, ELECTRONICS Sp. z o.o. Sp. A. ul. Gwotkiewicza 1, 08-440 Miętyce

