

Electric Clothes Dryer

Instruction Manual



Model: EV-230

Size: 1470x540x940MM

Rating: 220-240V AC, 50-60Hz, 230W, Class I

IP Degree: IP X1



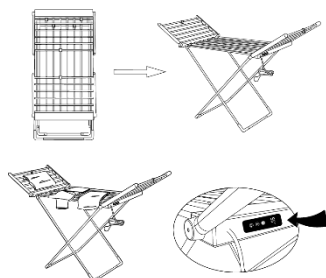
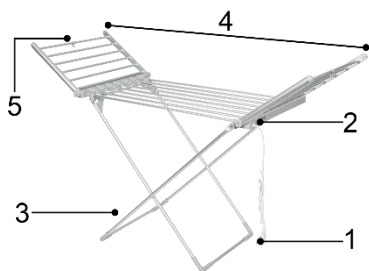
Please read all instructions before using this product. And keep these safety instructions for your future reference.

Warning

- 1.Keep away from children and disabled people when using this product.
- 2.Always unplug the power cord when you not in using.
- 3.If the supply cord is damaged it must be replaced by the manufacturer, a service agent or similarly qualified persons in order to avoid a hazard.
- 4.For household use only. Do not use outdoors.
- 5.Never put the product in water, in the bath or other water containers.
- 6.Do not use the power cord under the floor mats, slide or carpet to avoid the tripping hazard.
- 7.Do not unplug the device by the power cord, hold the plug, not the cord.
- 8.Do not use in areas where gasoline, paint or flammable liquids are used or stored.
- 9.Use this product strictly as described in this manual to avoid the cause of fire, electric shock or personal injury.
- 10.This appliance can be used by children aged from 8 years and above and persons with reduced physical, sensory or mental capabilities or lack of experience and knowledge if they have been given supervision or instruction concerning use of the appliance in a safe way and understand the hazards involved. Children shall not play with the appliance. Cleaning and user maintenance shall not be made by children without supervision.
- 11.Always fold the wings out before switching the airer on.
- 12.Always rinse your clothes fully before using, so no water drips from your washing.
- 13.Do not use to dry down jackets and quilts!
- 14.Max load-bearing 2.5kg per wing, load-bearing 10kg middle part.
- 15.This appliances is intended only for drying textiles washed in water.

Product use instructions

- 1.Please read the installation instruction carefully to understand how to install and use product.
- 2.Plug the power cord into an electrical outlet.
- 3.When connected to a suitable power supply, the switch key lights up, and it enters the standby state; by pressing the switch key, the function key lights up, allowing operation settings to be made.

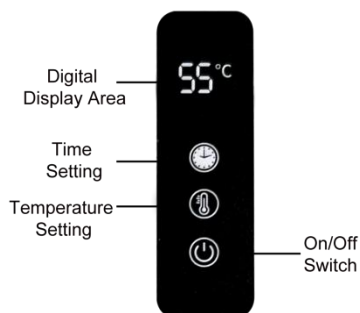


Item	Part description	Function
1	Power Cord	To connect to your home power supply
2	Switch Button	Turns the clothes dryer on and off
3	Support Legs	The stand base for the clothes dryer
4	Heating Region	The area to be used to dry clothes
5	Fixed Buckle	To secure ailer wings when folded & stored

Digital display (instructions for use)

Basic Instructions

1. Control accuracy: $\pm 1^{\circ}\text{C}$;
2. Timer setting range: 1-9 hours;
3. Temperature setting range: $30\sim 70^{\circ}\text{C}$;
4. Button: touch button;




Kind tips:

- Press the "On/Off Switch" button key to select on/off.
- Press the "Time setting" button, select 1-9 hours to set the timer, when 0 is selected, it is always in the heating state. Time setting with memory function.
- Press the "Temperature setting" quick key to set the temperature, the setting range is $30\sim 70^{\circ}\text{C}$; Temperature setting with memory function.
- When the surface is exposed or uncovered, the product temperature will be lower than the set temperature value for safety and energy saving.
- Please cover the sensor location first to ensure proper and safe temperature control.

Cleaning

1. Before cleaning, please unplug the product and let it cool down.
 2. Do not put the product, power cord and plug into the water. Keep the cord dry.
 3. Never clean the product with alcohol or solvent-based cleansers.
 4. Please clean the surface by wet towel first and then dry it with a soft cotton cloth.
- Please NOTE: Do not use a metal ball or a rough cloth to wipe the product, it will scratch the surface of the product.

Correct Disposal of this product	
	This marking indicates that this product should not be disposed with other household wastes throughout the EU. To prevent possible harm to the environment or human health from uncontrolled waste disposal, recycle it responsibly to promote the sustainable reuse of material resources. To return your used device, please use the return and collection systems or contact the retailer where the product was purchased. They can take this product for environmental safe recycling.

Warranty Information

1. The manufacturer provides warranty in accordance with the legislation of the customer's own country of residence, with a minimum of 1 year (Germany: 2 years), starting from the date on which the appliance is sold to the end user.
2. The warranty only covers defects in material or workmanship.
3. The repairs under warranty may only be carried out by an authorized service centre. When making a claim under the warranty, the original bill of purchase (with purchase date) must be submitted.
4. The warranty will not apply in cases of:
 - Normal wear and tear
 - Incorrect use, e.g. overloading of the appliance, use of non-approved accessories
 - Use of force, damage caused by external influences
 - Damage caused by non-observance of the user manual, e.g. connection to an unsuitable mains supply or non-compliance with the installation instructions
 - Partially or completely dismantled appliances