

**LOW RESOLUTION
- NOT FOR PRINT!**



PHILIPS AVENT

0-330 m² DECT No.1 recommended baby monitor (based in Europe) #1 in Europe

DECT baby monitor Audio monitor DECT SCD503

PHILIPS AVENT

The most reliable connection to your baby
Un collegamento sicuro con il tuo bambino

Crystal clear sound, 100 % private
Comforting nightlight

Suono nitido, 100 % privato
Luce notturna confortevole

SCD503

DECT baby monitor Audio monitor DECT

0-330 m² DECT No.1 recommended baby monitor (based in Europe) #1 in Europe

EN: Specifications are subject to modification without notice. The manufacturer may alter from time to time, without notice, the appearance, the construction, the components and the accessories of the product.

IT: Le specifiche sono soggette a modifiche senza preavviso. Il costruttore può modificare senza preavviso l'aspetto, la costruzione, i componenti e gli accessori del prodotto.

NL: Specificaties zijn onderworpen aan wijzigingen zonder kennisgeving. De fabrikant kan het uiterlijk, de constructie, de onderdelen en de accessoires van het product wijzigen zonder kennisgeving.

FR: Les spécifications sont susceptibles d'être modifiées sans préavis. Le constructeur se réserve le droit de modifier sans préavis l'apparence, la construction, les composants et les accessoires du produit.

ES: Las especificaciones están sujetas a modificaciones sin previo aviso. El fabricante no garantiza que se mantenga sin cambios el aspecto, la construcción, los componentes y los accesorios del producto.

PT: As especificações estão sujeitas a alterações sem aviso prévio. O produtor não garante que o aspecto, a construção, os componentes ou os acessórios do produto não sejam alterados sem aviso prévio.

24 Hrs

Up to 24 hours monitoring per charge
Fino a 24 ore di monitoraggio per carica
Gebruiksduur tot wel 24 uur
Jusqu'à 24 heures de surveillance par facturation
Hasta 24 horas de uso por carga
Até 24 horas de monitorização por carga

0-330 m²

Indoor range up to 50 m, outdoor range up to 330 m
Portata interna fino a 50 metri, portata esterna fino a 330 metri
Bereik binnenshuis tot 50 meter, bereik buitenshuis tot 330 meter
Portée intérieure jusqu'à 50 m environ, portée extérieure jusqu'à 330 m environ
Alcance en interiores 50 m, alcance en exteriores 330 m
Alcance interior até 50 m, alcance exterior até 330 m

Smart ECO Mode

PHILIPS

PHILIPS AVENT

Crystal clear sound, 100 % private, with zero interference
Suono nitido, collegamento privato al 100 % e assenza di interferenze
Kristhalhelder geluid, 100 % privé, storingvrij
Son limpide, 100 % privé, sans interférence
Sonido nitido, 100 % privado, sin interferencias
Som cristalino, 100 % privado, com interferência zero

Comforting nightlight to calm your little one
Luce notturna confortevole per calmare il tuo piccolo
Rustgevend nachtlampje om uw baby te kalmeren
Veilleuse réconfortante pour votre bébé
Tranquilizadora luz noturna para calmar a tu bebé
Luz noturna tranquilizante para acalmar o bebé

Parent unit is mains powered or battery operated. Batteries not included (batteries do not charge in device)
L'unità genitore funziona con l'alimentatore o con le batterie. Batterie non incluse (batterie non ricaricabili all'interno del dispositivo)
Ouderunit werkt op netstroom of op batterijen. Batterijen niet inbegrepen (batterijen laden niet op in apparaat)
L'unità-parent fonctionne sur secteur ou avec des piles. Piles non fournies (les piles ne se chargent pas quand elles sont dans l'appareil)
La unidad de padres funciona con batería. Pilas no incluidas (las pilas no se cargan en el dispositivo)
A unidade dos pais funciona com bateria. Pilhas não incluídas (as pilhas não se carregam no interior do dispositivo)

Minimises transmission and saves energy
Minimizza la potenza di trasmissione e risparmia energia
Minimaliseert transmissie en bespaart energie
Minimise la transmission et économise l'énergie
Minimiza la potencia de transmisión y aumenta la duración de la batería
Minimiza a transmissão e economiza energia

Volume control
Controllo del volume
Volumeregeling
Contrôle du volume
Control de volumen
Controlo de volume

EN: Based on 2016 GemSeek survey conducted among 1,650 female users of baby monitors.
IT: Basato su un'indagine GemSeek, effettuata nel 2016 su un campione di 1.650 utilizzatrici di baby monitor in Germania, Francia e Russia.



Point 6 Design Ltd
The Linen House
253 Kilburn Lane
London W10 4BO
United Kingdom
www.point6.co.uk
+44 (0)20 8962 5880

Project name: ENTRY LEVEL DECT MONITOR SCD503

42 code description: FBOX SCD503/00 WEU1 ENTRY DECT MONITOR

Cluster/Languages: WEU1 - EN / IT / NL / FR / ES / PT (6 lang)

Packaging 42 code: 4213 350 79511

Previous 42 code: -

SCF Code: SCD503/00

IPM Number: 134734

88 code: 8841 503 00010

EAN/UPC Barcode: 8710103882862

PZN code (DE only): N/A

Philips diecut reference: 42133590093_1_20170807

Printer's diecut reference: N/A

Pack dimensions: W 220 mm x H 156 mm x D 56 mm

Printer/supplier: VTEch

Barcode scale/height: 80% / 18mm

Bar Width Reduction: 0 - printer to apply own settings

Printer's FSC COC number: N/A

FSC label language: -

® or ™ FSC logo? -

Countries of distribution: Italy, Netherlands, Belgium, Luxembourg, Spain, Portugal

MASTER 5R

Version number: 01 Aug 2018

Revision date: 01 Aug 2018

Date of 1st proof: 10 JUL 2018

Point 6 operator: RC

CMM email: turner.pippers@philips.com

IPL/LCM PM email: francis.shiu@philips.com

Point 6 job number: 16341

Point 6 file name: 16341-SCD503-00_WEU1_79511_v5R

GMG proof colour standard reference: SCD503-26_VTECH_20180508

CMYK colour profile: FOGRA 39

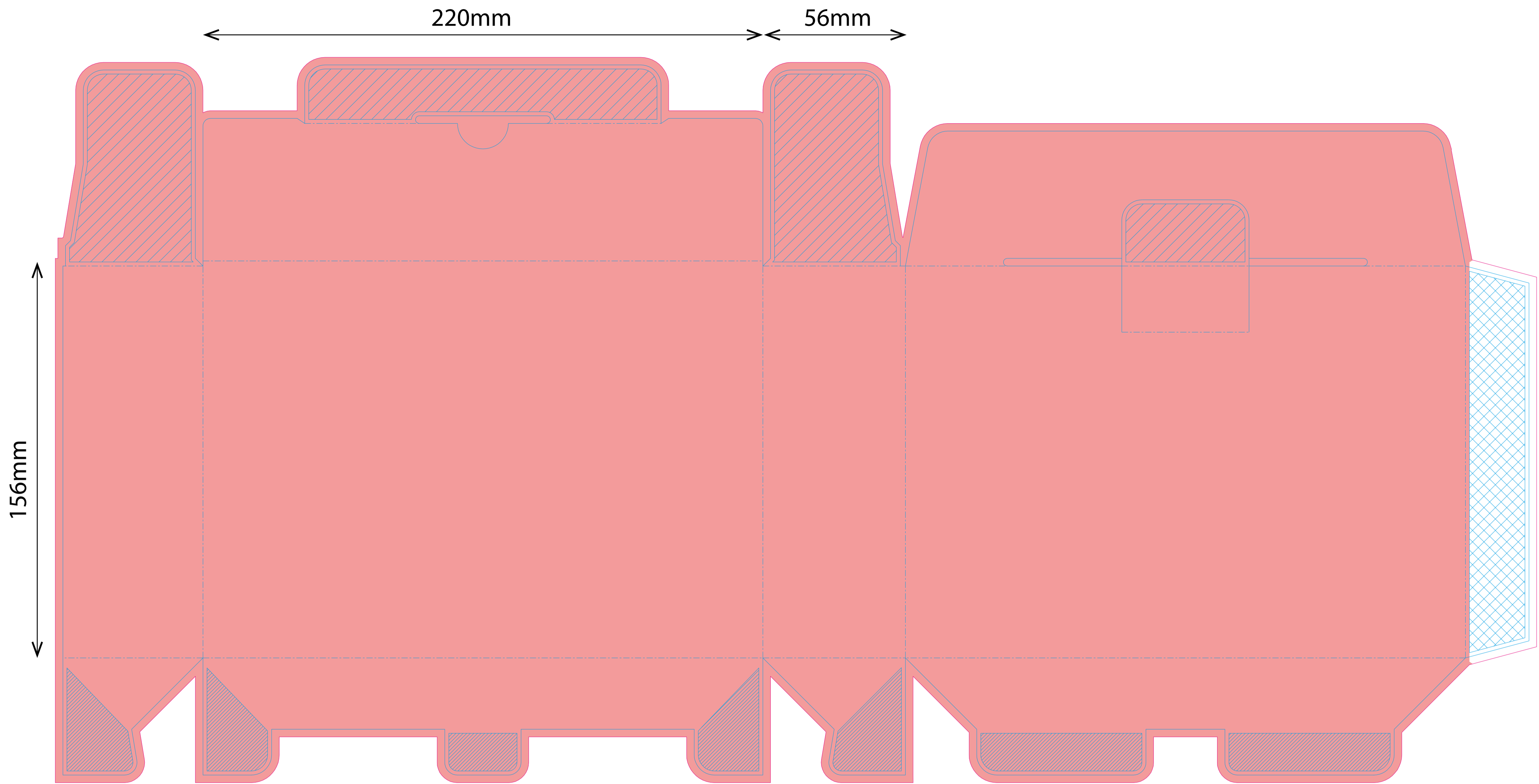
Colours:

Varnish: Measure @ 60°, ISO 2813

>80 Gloss Units
High Gloss UV Varnish

Finishing: Cutter / Bleed

View on printed side Die cut on printed side		TOLERANCES DIE CUT ON PRINTING DIMENSION ± 1 mm	Change log
UNIT	MATERIAL		Created after alignment with supplier Generalized the material spec notation
mm	Corrugated Cardboard F-Flute + recycled top liner		Glued area Non visible area Non visible area when box is closed
SCALE	TREATMENT		BANNED SUBSTANCES In compliance with Regulated Substances List: CSO-BP01-2013-001
1:1	Printed CMYK, folded, glued		DATE YY-MM-DD 1 13 Nov 2013 1 07 Aug 2017
PHILIPS CL PACKAGING DEVELOPMENT	TITLE MASTER FBOX LOW END DECT MONITOR SCD501	12NC	4213 359 0093
NAME	Josse Ruiter		
EMAIL	josse.ruiter@philips.com	SOFTWARE	ARTIOS CAD 7.6
		PLATFORM	MICROSOFT WINDOWS
SH.110 - 01			©ROYAL PHILIPS N.V. 2013



Point 6 Design Ltd
The Linen House
253 Kilburn Lane
London W10 4BO
United Kingdom
www.point6.co.uk
+44 (0)20 8962 5880

Project name: ENTRY LEVEL DECT MONITOR SCD503
42 code description: **FBOX SCD503/00 WEU1 ENTRY DECT MONITOR**
Cluster/languages: **WEU1** - EN / IT / NL / FR / ES / PT (6 lang)
Packaging 42 code: **4213 350 79511**
Previous 42 code: -
SCF Code: **SCD503/00**
IPM Number: **134734**
88 code: 8841 503 00010
EAN/UPC Barcode: 8710103882862
PZN code (DE only): N/A

Philips diecut reference: 42133590093_1_20170807
Printer's diecut reference: N/A
Pack dimensions: W 220 mm x H 156 mm x D 56 mm
Printer/supplier: VTech
Barcode scale/height: 80% / 18mm
Bar Width Reduction: 0 - printer to apply own settings
Printer's FSC COC number: N/A
FSC label language: -
® or ™ FSC logo? -
Countries of distribution: Italy, Netherlands, Belgium, Luxembourg, Spain, Portugal

MASTER **5R**

Version number:
Revision date: **01 Aug 2018**

Date of 1st proof: 10 JUL 2018
Point 6 operator: RC
CMM email: turner.pijpers@philips.com
IPL/LCM PM email: francis.shiu@philips.com

Point 6 job number: **16341**
Point 6 file name: 16341-SCD503-00_WEU1_79511_v6R

GMG proof colour standard reference: SCD503-26_VTECH_20180508
CMYK colour profile: FOGRA 39

Colours:

PANTONE® 2613 C

Varnish: Measure @ 60°, ISO 2813
> 80 Gloss Units
High Gloss UV Varnish

Finishing:
Cutter / Bleed

View on printed side Die cut on printed side		TOLERANCES DIE CUT ON PRINTING DIMENSION ± 1 mm	Change log
UNIT	MATERIAL		1 created after alignment with supplier JBR
mm	Corrugated Cardboard F-Flute + recycled top liner		1 Generalized the material spec notation KWQ
SCALE	TREATMENT		Glued area
1:1	Printed CMYK, folded, glued		Non visible area
PHILIPS CL PACKAGING DEVELOPMENT	TITLE	12NC	Non visible area when box is closed
	MASTER FBOX LOW END DECT MONITOR SCD501	1	BANNED SUBSTANCES
		1	In compliance with Regulated Substances List: CSO-BP01-2013-001
NAME	Josse Ruiter	DATE	
EMAIL	josse.ruiter@philips.com	YY-MM-DD	
		13 Nov 2013	
		07 Aug 2017	
		4213 359 0093	
SOFTWARE	ARTIOS CAD 7.6	PLATFORM	MICROSOFT WINDOWS
SH.110 - 01			©ROYAL PHILIPS N.V. 2013

