

ENGLISH

Table of Contents

1. Introduction	3
1.1 Preface	3
1.2 Packing List	5
1.3 Cautions	5
1.4 Connection	7
1.5 View	10
2. About the Player	11
2.1 Remote Control	11
2.2 Setup Menu	13
3. Main Functions	22
3.1 Smart TV Portal	22
3.2 Movie Library	24
3.3 Photo Library	26
3.4 Music Library	28
3.5 File Manager.....	29
3.6 Playlist Management.....	34
3.7 Copy und Delete Function.....	36
3.8 SAMBA Server and Client	38
3.9 BitTorrent Download	39
4. Upgrading the Firmware	41
5. Appendixes.....	42
6. Frequently Asked Questions	44
7. Copyrights and Trademarks	46
8. Warranty	46
9. GPL Statement	47

1. Introduction

1.1 Preface

Thank you very much for purchasing FANTEC Smart TV Hub Box. We hope you will enjoy using it as a great home entertainment partner. This player has the following functionality.

A/V Output

- HDMI V1.3 for high-definition video and digital audio
- Composite-video and stereo audio for analogue audio-visual connection
- S/PDIF optical interface for high-fidelity digital audio
- Adjustable video output resolution (NTSC, PAL, 480p, 576p, 720p, 1080i, 1080p)

Smart TV

- Portal including hundreds of APPs and services
- Media libraries, music gates, movies, television series, news and games
- Always up-to-date and available without any installation
- Optimized for presentation on every TV

Movie Playback

- Movie format: AVI, VOB, MKV, MOV, MP4, MPG, TS, WMV, DAT, IFO, RM, RMVB, ISO (DVD & BluRay), AVCHD, MTS, M2TS, M4V, ASF, FLV, XviD, DivX 3/4/5, DVD menu playback, H.264, resolution up to 720p/1080i/1080p
- Supports major audio formats (1080p HD video decoding)
- Fast forward/rewind
- View subtitle
- Subtitle control: color/offset/size
- Unicode (UTF8), BIG5 (Traditional Chinese), Western, Turkish, Central European, Greek, Cyrillic, SE European, Russian, Hebrew, Arabic, Japanese, Thai

Audio Playback

- Music format: MP3, OGG, WMA, WAV, FLAC, PCM, LPCM, MS-ADPCM, COOK, RA-Lossless
- Stereo/Dolby Digital AC3 5.1 (pass-through & downmix)
- Dolby Digital 5.1 (pass-through & downmix)
- Dolby Digital Plus 7.1 (pass-through)
- DTS Digital Surround 5.1 & 7.1 (pass-through & downmix)
- Fast forward/rewind
- Shuffle
- Repeat

Photo Playback

- Photo format: HD JPEG, JPG, BMP, GIF, TIF, PNG
- You can view photos in slide show mode with background music.
- Zoom in/out, Rotate

Network Feature

- A/V streaming/transmission via Ethernet (10M/100M/1000M) & Wi-Fi (802.11b/g/n, optional)
- File sharing via Samba server
- A/V streaming via UPnP Media Server
- Internet Radio

Media Library

- Quick-Search, search files by keywords.
- A powerful search engine, allows you to browse multimedia files in most easy ways

File Copy

- Supports copying & moving files among USB storage devices, memory cards and Network

USB 2.0 Support

- USB HOST port x 2 (for USB storage devices),for connection of an USB DVD drive, an USB Y-cable is recommended
- 1 x SD / SDHC / MMC Card Reader

Note: All the information contained in this manual was correct at the time of publication. However, as our engineers are always updating and improving the product, your device's software may have a slightly different appearance or modified functionality than presented in this manual.

1.2 Packing List

Part	Quantity
Smart TV Hub Box	1
Remote Control	1
Remote Control Battery	2
AC/DC adaptor	1
Quick start guide	1
Warranty card	1

Note: The actual contents in the package might be different from the packing list in the manual.

1.3 Cautions

The FANTEC Smart TV Hub Box design and manufacture has your safety in mind. In order to safely and effectively use this player, please read the following before usage.

1.3.1 Usage Cautions

User should not modify this player. If commercial hard disk is being used, the environmental temperature should be within +5°C ~ +35°C.

1.3.2 Power

The player's power voltage: DC 5V.

When using this player, please connect the supplied AC adapter or AC adapter cable to the player's power jack. When placing the adapter cable, make sure it cannot get damaged or be subject to pressure. To reduce the risk of electric shock, unplug the adapter first before cleaning it. Never connect the adapter to the player in a humid or dusty area. Do not replace the adapter or cable's wire or connector.

1.3.3 Radio Interference

- If not properly shielded, almost all electronic devices will get radio interference. Under some conditions, your player might get interference.

- The design of this player has followed the FCC/CE standard, and has followed the following rules:

(1) This player may not cause harmful interference;

(2) This player could accept some interference received including interference that may cause undesired operation.

1.3.4 Repair

If the player has a problem, you should take it to an appointed repair centre and let the specialists do the repair, never repair the player yourself, you might damage the player or endanger yourself or your data.

1.3.5 Disposing of the Player

When you dispose of the player, be sure to dispose it appropriately. Some countries may regulate disposal of electrical device, please consult with your local authority.

1.3.6 Others

When using this player, please do not let the player come into contact with water or other liquid, if water is accidentally spilled on the player, please use a dry cloth to absorb the spillage.

Electronic products are vulnerable, when using please avoid shaking or hitting the player, and do not press the buttons too hard.

Do not let the player come into contact with water or other liquid.

Do not disassemble the player; repair the player or change the design of the player, any damage done will not be included in the repair policy.

Do not press the buttons of the player too hard.

Avoid hitting the player with hard object, avoid shaking the player, and stay away from magnetic fields.

During electrostatic discharge and the strong electromagnetic field, the product will malfunction, then unplug the power cable and the product will return to normal performance next time it is powered on.

1.4 Connection

1.4.1 Connecting the Power Supply

- (1) Follow the picture and connect the AC adaptor to the player's DC IN jack;
- (2) Follow the picture and plug in the AC adaptor to the power outlet.



1.4.2 Connecting a USB Device

- (1) Make sure the player is powered on;
- (2) Plug in the USB stick, USB DVD or USB HDD etc. to the USB HOST port of this player.



In this way, you can browse contents on the USB device.

1.4.3 Connecting a Memory Card

Memory card can be used by inserting to the card slot

- (1) Follow the picture to insert the memory card to the card slot properly;
- (2) Insert the card by following the arrow pointer in the picture.



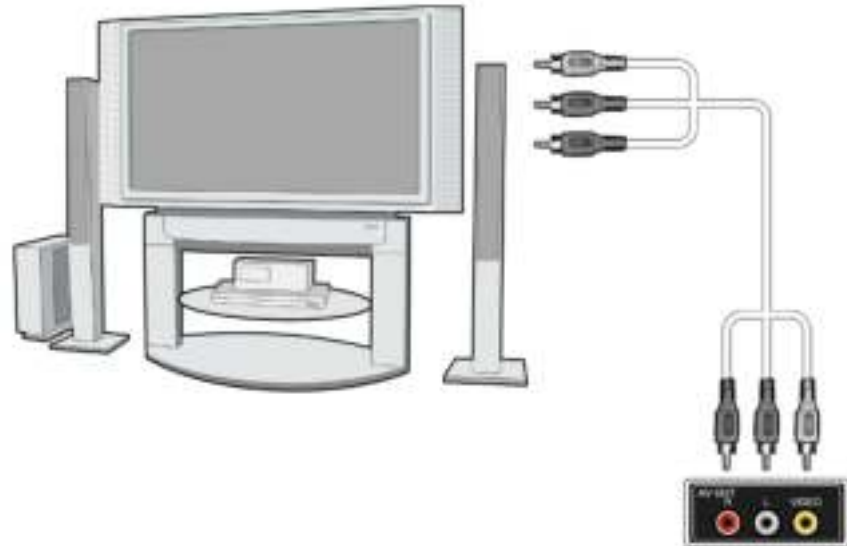
In this way, you can browse contents on the memory card.

1.4.4 Connecting to a TV

1.4.4.1 A/V OUT

- (1) Follow the picture and plug in the 3 color connector to the player's A/V OUT jack;
- (2) Follow the picture and plug in the 3 color connector to the TV's A/V IN jack.

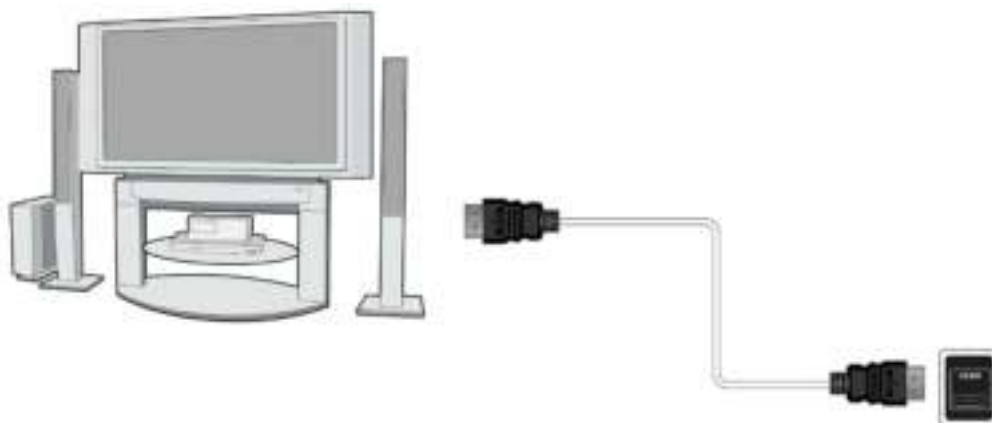
In this way, you can enjoy the content in the player on TV or other display devices.



1.4.4.2 HDMI OUT

- (1) Follow the picture and plug one connector on your HDMI cable to the player's HDMI jack;
- (2) Follow the picture and plug the other connector on your HDMI cable to the TV's HDMI jack.

Note: The HDMI cable is an optional accessory sold separately.



In this way, you can have the highest quality video and audio via a single cable.

1.4.5 Connecting to an Digital Amplifier

- (1) Follow the picture and plug in the Toslink connector of your optical fiber to the player's S/PDIF optical jack;
- (2) Follow the picture and plug in the other connector on your optical fiber to the digital audio device (digital amplifier or decoder).



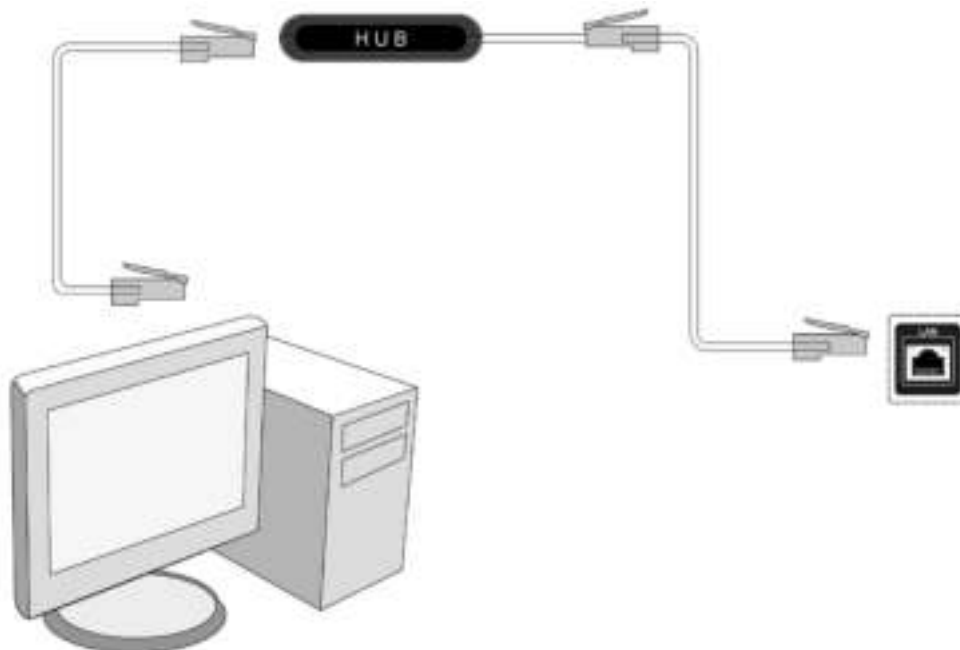
Note: Optical fiber cable is not supplied.

In this way, you can enjoy powerful Dolby Digital/ Dolby Digital Plus/ Dolby TrueHD/ DTS or MPEG sound. DTS-HD sound is transferred via HDMI cable and an amplifier with HDMI interface is needed. (Please refer to '**2.1.2 Changing Audio Settings**' for configuration)

1.4.6 Connecting to a network

To connect to a LAN (Local Area Network) you require a cat5, cat5e or cat6 network cable (not supplied).

- (1) Connect one of the crystal plugs on the cable to the player's RJ45 LAN socket;
- (2) Connect the other crystal plug on the cable to a RJ45 LAN port on your router, switch, or hub devices.



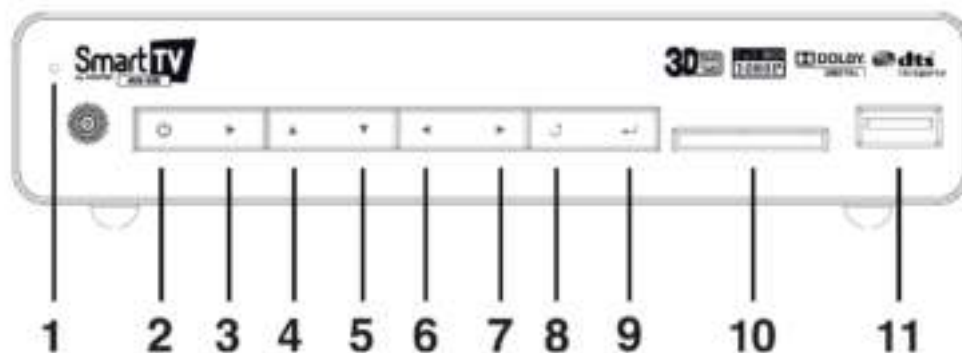
1.4.7 Connecting to a wireless network

- (1) Make sure the player is powered on;
- (2) Plug the Wireless LAN USB Adapter (i.e. Wi-Fi USB Dongle) to the USB HOST port of the player.

Note: The Wi-Fi Dongle is an optional accessory sold separately. (Please refer to '**2.1.4 Changing Network Settings**' for more details about wireless setup)

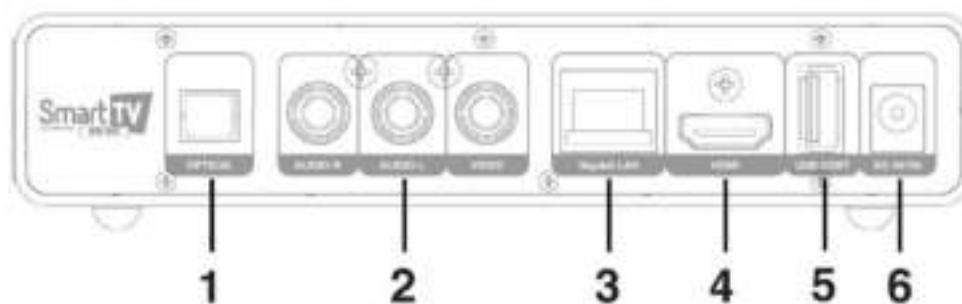
1.5 View

Front



- | | |
|-----------------------|-----------------|
| 1. Power LED | 2. Power |
| 3. Play | 4. Up |
| 5. Down | 6. Left |
| 7. Right | 8. Return/ Exit |
| 9. Enter/ OK | 10. Card Reader |
| 11. USB 2.0 HOST port | |

Rear Panel



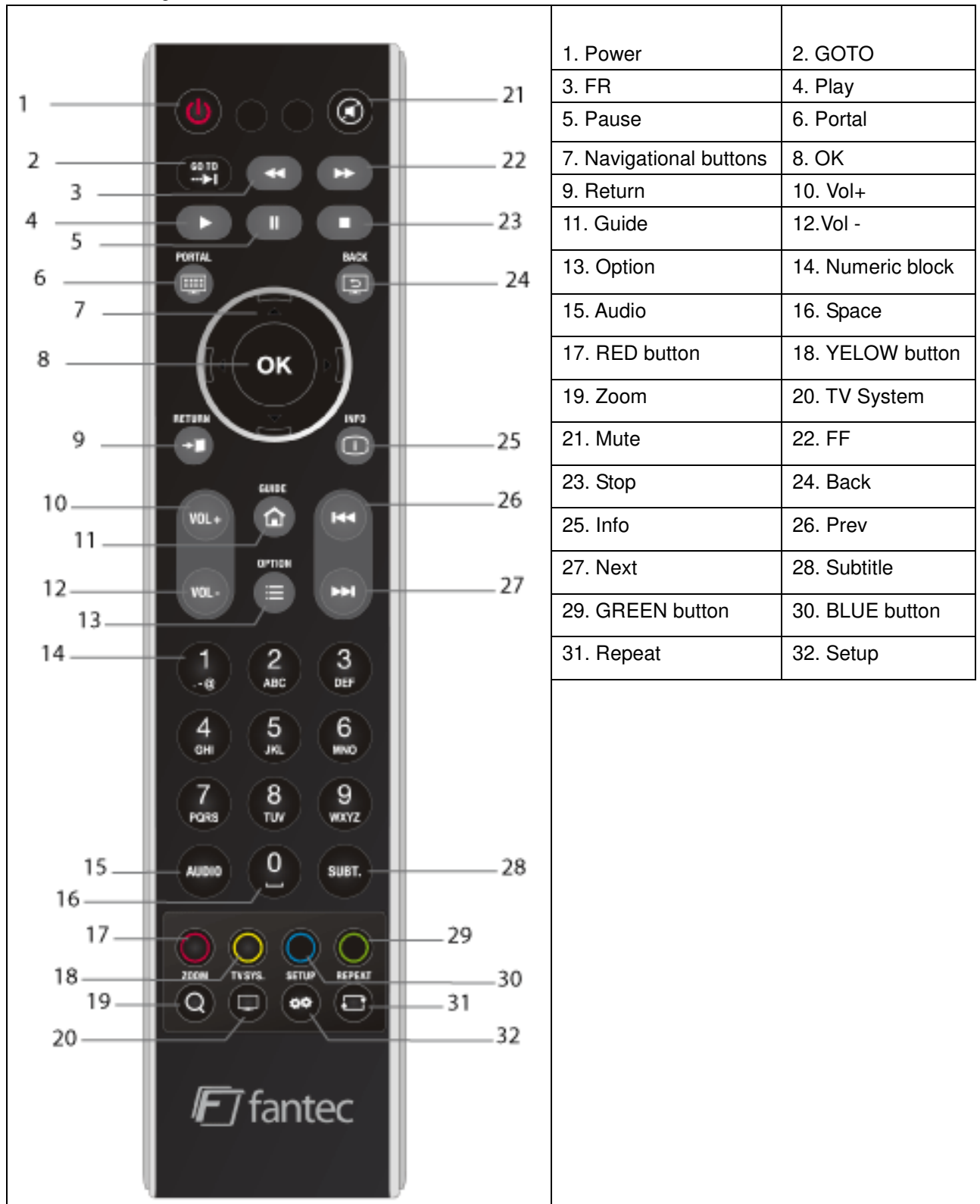
- | | |
|------------------------------|-----------------|
| 1. S/PDIF Optical audio jack | 2. A/V OUT jack |
| 3. RJ45 LAN socket | 4. HDMI jack |
| 5. USB 2.0 HOST port | 6. DC-IN jack |

2. About the Player

2.1 Remote Control

All procedures in this manual can be carried out using the remote control buttons.

See the following for details on each button and its function:



No.	Button	Function
1	Power	Press to enter standby mode or wake up.
2	GOTO	Press to jump to a specific point on a title. Specify the point using Title, Chapter and Time.
3	FR	Press to fast rewind the current playback. Press repeatedly to select speeds.
4	Play	Press to begin playback.
5	Pause	Press to pause playback.
6	Portal	Press to open or restart the Smart TV main portal.
7	Navigational buttons	Press the arrow buttons to select menu options.
8	OK	Press OK button to confirm.
9	Return	Press to return to the previous screen while navigating menus or leave Smart TV portal service.
10	VOL+	Press to increase the volume.
11	Guide	Press to open the guide bar or enter the home screen.
12	VOL-	Press to decrease the volume.
13	Option	Press to enable the option menu, where you can change the view mode of file manager and media library. Press to display or hide the option menu during playback.
14	Numeric buttons	Press to enter numerical input from 1-9, channel numbers or symbols and alphabetic characters.
15	Audio	Press to select an audio track.
16	Space	Press to enter numerical input 0 or space character.
17	Red	Press to open network option.
18	Yellow	Reserved button. No function has been assigned to it yet.
19	Zoom	Press to zoom the image (photo or video).
20	TV SYS.	Press to switch between NTSC, PAL, 480P, 576P, 720P, 1080I, and 1080P.
21	Mute	Press to mute audio output, and press again to resume.
22	FF	Press to fast forward the current playback. Press repeatedly to select speeds.
23	Stop	Press to stop playback.
24	Back	Press to go back inside of Smart TV portal. Delete the characters that you have typed in. This button is for Smart TV portal service only.
25	Info	Press to display current status. Press during playback, an onscreen display appears showing track number and time elapsed/remaining.
26	Prev	Press to view the previous file / page up.
27	Next	Press to view the next file / page down.
28	Subtitle	Press to set subtitle options. You can change the color/size/offset/text encoding of subtitle.
29	Green	Press to open Operations menu. Add song to playlist or photo to album.
30	Blue	Reserved button. No function has been assigned to it yet.
31	Repeat	Press to set repeat option.
32	Setup	Press to enter the setup menu.

2.2 Setup Menu

The Setup menu allows you to personalize and configure the preferences for your player.

To select a Setup option:

- Select the Setup icon on the home screen, or press **SETUP** menu on the remote control.
- Use the **UP/DOWN** navigational buttons to select an option, and then press **OK**.



There are five Setup options, including **System**, **Audio**, **Video**, **Network** and **MISC**. Use the **UP/DOWN** navigational buttons to select a menu. Press **OK** to confirm. Press **Back** to cancel and display the previous menu screen.

2.1.1 Changing System Settings

Use this menu to configure system settings.



Menu Language

- Select to choose the OSD (On-Screen Display) language. (ENGLISH, GERMAN, FRENCH, SPANISH, ITALIAN, DUTCH, SLOVENIAN, CZECH, SLOVAK, TURKISH, GREEK, RUSSIAN, POLISH, CHINESE, BULGARIAN, VIETNAMESE, ROMANIAN, HEBREW, HUNGARIAN, ARABIC, PORTUGUESE, KOREAN, THAI, JAPANESE)

Region

- Select to set the region of Smart TV portal

Text Encoding

- Select to set the text encoding option (subtitle display).

Time

- Select to set the system time.

Manual



Press the **left** / **right** button to select each field and the **up** / **down** button to adjust each setting. Numeric buttons are available here. Press the **OK** button to confirm.

DVD Auto-Play

- Select to turn on/off USB DVD auto-play. If you connect the USB DVD drive, an USB Y-cable is recommended.

Screen Saver

- Select to turn on / off screen saver.

DLNA DMR

- Digital Media Renderer, can play content received from a **digital media controller (DMC)**, which will find content from a **digital media server (DMS)**

Mini KBD Language

- Select to change the language of the mini keyboard.

Resume Play

- Select to turn on / off resume playback (auto-bookmarking) feature for movies.

BD Menu

- Select to enable/ disable BluRay disk menu.

Auto Standby

- Select to enable / disable auto power off after 2 hours without any command.

CEC

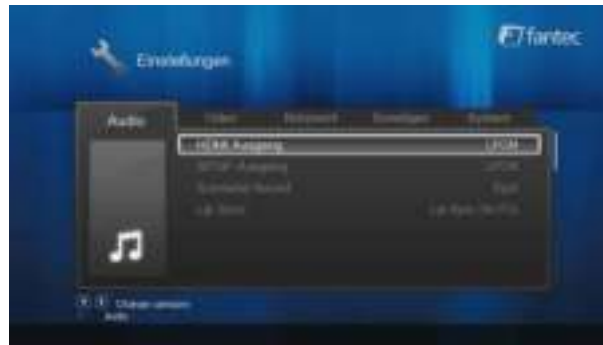
- One Touch Play: Select to enable/ disable CEC signal of HDMI interface between TV and Player.
- One Touch Standby: Select to enable/ disable power off mode at the player when TV will be powered off.
- Auto Power on from TV: Select to enable/ disable power on mode at the TV when the player will be powered on.

Restore Default

- Select to restore factory defaults.

2.1.2 Changing Audio Settings

Use this menu to configure audio settings



Night Mode

- Choose among **Off** / **On** / **Comfort**. If the option comfort is turned on, the audio output volume will be decreased to make you more comfortable.

HDMI Output

- Choose among **LPCM**, **RAW** and **Auto**.

SPDIF Output

- Choose among **LPCM** and **RAW**.

Note: In **RAW** mode, Dolby Digital Plus, Dolby Digital and DTS sound can be by passed to the Digital amplifier.

Lip Sync

- Select to adjust the audio track to synchronise the lip movements of spoken words.

2.1.3 Changing Video Settings

Use this menu to configure video settings.



Aspect Ratio

- **Pan Scan 4:3:** Display a wide picture on the entire screen and cuts off the redundant portions. Select when a standard 4:3 TV is connected.
- **Letter Box 4:3:** Display a wide picture with two black borders on the top and bottom of 4:3 screens. Select when a standard 4:3 TV is connected.
- **16:9:** Compress the image to convert the whole image. Select when a 16:9 TV is connected.
- **16:10:** Compress the image to convert the whole image. Select when a 16:10 TV is connected.

TV System

- Select to adjust TV Type and video output resolution. This setting depends on your regional location. Include: NTSC / PAL / 480P / 576P / 720P 50HZ / 720P 60HZ / 1080I 50HZ / 1080I 60HZ / 1080P 50HZ / 1080P 60HZ.

NTSC: United States, Canada, Japan, Mexico, the Philippines, South Korea, and Taiwan.

PAL: Europe, Greenland, parts of Africa and South America, the Mideast, China, India, Australia, and Indonesia.

Video Zoom

- This item is to enable or disable the zoom in/out function.

1080p 24Hz

- Choose this option to enable or disable 1080P 24HZ support. A TV set with 1080P 24HZ (24P) mode is needed.

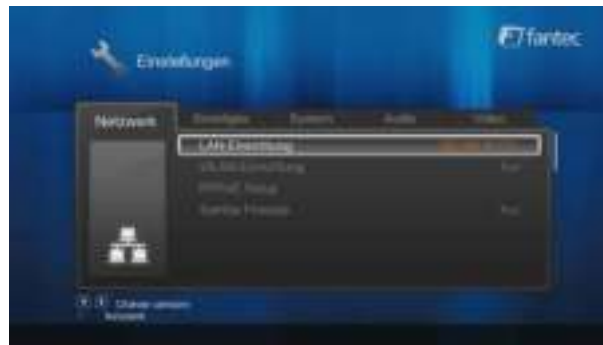
Deep Color

- Help to perform more detailed level of color depth, make continuous color change smoother. You can get more vivid color effects. A TV set with deep color support is needed.



2.1.4 Change Network Settings

Use this menu to configure your network.



Wired Lan Setup

- **DHCP IP (AUTO)**

Select to obtain IP address automatically.

- **FIX IP (MANUAL)**

Select to manually input the IP Address, Subnet Mask, Default Gateway, and DNS Server IP Address.

Wireless Setup

- There are 3 mode for you to select, **Infrastructure (AP)** and **Peer to Peer (Ad Hoc)** and **WPS (AP)** mode. Follow the prompting message on the screen and press **Red** button to choose **Peer to Peer (Ad Hoc)** or **WPS (AP)** mode.



This player can store up to three wireless network connections. Press **OK** to connect, press **Back** to cancel, and press **Zoom** to modify the parameters of the connection, press **Red** button to choose **Peer to Peer (Ad Hoc)** or **WPS (AP)**.



Infrastructure (AP)

- Infrastructure mode is used to connect computers with wireless network adapters, also known as wireless clients, to an existing wired network with the help from wireless router or access point. Please follow following steps to configure your wireless network.

Step 1: Scanning AP (Access Point) in your network

Follow the prompting message on the screen and press the **Zoom** button to select **Infrastructure (AP)** mode and update the access points list, and all SSID will be displayed on the screen.



Step 2: Enter WEP / WPA key.

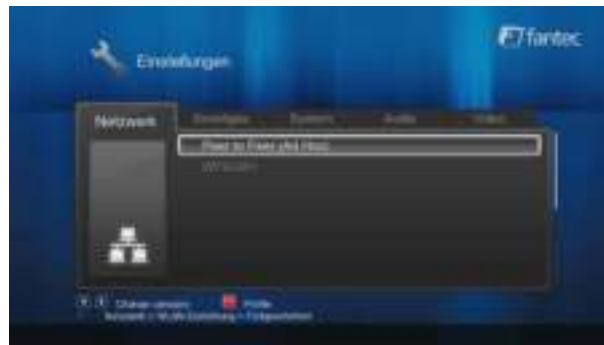
Press **OK** to input encryption keys via the virtual keyboard. Press the navigational buttons to select, **OK** to input, **FF** to move cursor left, **FR** to move cursor right, **Zoom** to switch between uppercase and lowercase, **Stop** to delete a character, **Red** to make more symbols available, **Green** to change the language of the virtual keyboard, **OK** to confirm and to start testing the connection.



The testing process will take for a while, please be patient to wait. If the test is ok, the network information (Profile Name, IP address, Subnet Mask, Gateway, etc.) will be displayed on the screen.

Peer to Peer (Ad Hoc)

- Peer to Peer mode, which is also called Ad Hoc mode or computer-to-computer mode, is used to connect wireless clients directly together, without the need for a wireless router or access point.



Step 1: Specify your SSID name

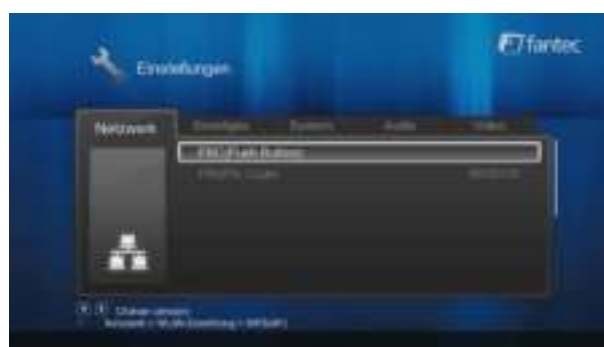


Step 2: Specify your host IP



WPS (AP)

- WPS, Wi-Fi Protected Setup, is used to connect a wireless router directly, without searching SSID and inputting password. In this mode, you just need to configure the parameters of your router which support WPS function. There are two modes for you to select, PBC mode and PIN mode.



PBC: First press the WPS button on the router or select the button mode in the configuration menu of the router, then select the PBC mode, the connection process will take for a while, please be patient to wait.

PIN: Input the pin code when configure your router, then select the PIN mode, the connection process will take for a while, please be patient to wait.

PPPOE Setup

- Input the ADSL account and password in this menu, system will obtain IP address automatically from the server based on PPPOE protocol.

Step 1: Select the connection interface, wired or wireless



Step 2: Press **Right** button to input your ADSL account



Step 3: Press **Right** button to input your password and start to test the connection.



BT Process

- Select to turn BitTorrent function On/Off. Please refer to '3.9 BitTorrent Download ' for more details on BitTorrent function of this product.

Samba Process

- Select to turn NAS function On/Off. Please refer to '3.8 SAMBA Server' for more details on NAS function of this product.

2.1.5 Miscellaneous

Use this menu to adjust miscellaneous settings.



Version Info

- This tab shows you information about the firmware installed and about the material components of your player.

Network Info

- This tab shows you information about your network, MAC Address, IP address Gateway, Subnet.

USB Upgrade

- Select to update the firmware via a USB stick.

Step 1: Copy 'install.img' or extension files to the root directory of an USB stick, and connect it to an USB HOST port of the player.

Step 2: Press **OK** to confirm.

Key Tone Volume

- Select to adjust the key tone volume during usage of the remote control.

3. Main Functions

3.1 Smart TV Portal

Note: While browsing through Smart TV portal an internet connection is required. High definition video files might be buffering. It is normal due to the limit of internet traffic, network speed or signal strength (Wi-Fi).

Button	Function
Navigational buttons	Use to move the cursor to highlight the APP or to select menu item.
OK	Start to open the highlighted APP, execute options inside of APP, start playback.
Numeric button	Use to open shortcuts by pressing the related numeric button.
Color button	Use to open shortcuts by pressing the related color button.
Back	Use to go back to the previous page, stop playback or delete character you have typed in.
VOL+/-	Increase/decrease the volume.
Mute	Press to mute audio output, and press again to resume.

Open Smart TV

- Choose **Smart TV** icon on the main menu or remote control to open the portal.



Set Region

- Choose **Service** icon to open the region settings.



- Select all counties to be displayed and go to **HOME** icon to return to portal.
Following countries are currently available: Germany, Austria, Switzerland, France, Italy, Spain, Portugal, Belgium, Netherlands, Luxembourg, UK, Denmark, Sweden, Finland



Search option by Topic

- Press the **Search** icon to sort all available APPs by **news**, **service**, **vod** (video on demand), **entertainment**, **music** or **games**.



Sorting by Favorites

- Press the **Arrange** icon to sort all available APPs manually in the sort order you like to access them.



Step 1: Move the cursor to select the APP you want to sort and press **OK** button to confirm, then move the icon by navigational button to the target location and then press **OK** key again to finish moving . To access the next page of the portal, please press the **arrow keys** left and right of the APP window



Step 2: After all of your favorite APPs are sorted, press the **Arrange** icon again to save your sort order.

Note: It's not possible to arrange the upper row, because this row is reserved for most accessed and recommended APPs. The lower row will display upcoming APPs, service information or advertisements.

3.2.2 Movie Playback Control

You can access the following functions during playback.

Button	Function
Play/Pause	Pause or resume the current playback.
Prev/Next	View the previous or next file/chapter.
FR/FF	Fast rewind or fast forward. Press repeatedly to select the speed.
GOTO	Jump to a specific point on a title. Specify the point using Title, Chapter and Time.
Option	Display or hide the option menu during playback.
Stop	Stop playback.
VOL+/-	Increase/decrease the volume.
Audio	Select an audio track.
Subtitle	Select a subtitle and change the color/size/offset/text encoding of subtitle.
Repeat	Set the repeat option.
Zoom	Zoom in the image.
Info	View the media information.

3.2.3 Movie Playback Options

During movie playback, press **Option** button to display or hide the option menu at the bottom of the screen.



Next to audio track, subtitle, repeat mode, you also can get following functions though the option menu during video playback.

DVD Menu

- Select to return to the navigation menu (**Title Menu / Root Menu**) during DVD IFO or ISO playback.

GOTO

- Select to jump to a specific point on a title. Specify the point using Title, Chapter and Time.

Video Setting

- Select to adjust the value of **Brightness, Contrast, Saturation** and **Hue**.

3.3 Photo Library

Select the Photo icon on the main menu to enter into photo library interface. Only supported files will be displayed. This player supports HD JPEG, JPG, BMP, GIF, TIF and PNG files.



3.3.1 Photo Library Options

In photo library, press **Option** button to display the option menu, you can get following functions though the option menu.



Quick-Search

- Choose the **Search** option in the option menu and you can search for a photo file by filter to locate the specific photo file.

View Mode

Choose a view mode among **Thumbnails**, **List**, and **Preview** from option menu

Filter Mode

- Choose to filter by **Photo Directory**, **Date view**, **All Photos**, or **Albums** from option menu.

Sorting Mode

- Choose to sort by **Name**, **Recently Added** or **Recently Played** from option menu.

3.3.2 Photo Playback Control

You can access the following functions during photo playback.

Button	Function
Prev / Next	View the previous or next photo.
Up / Down	Rotate a photo in any angle.
Option	Display or hide the option menu during playback.
Stop	Stop playback.
Zoom	Zoom in the image.

3.3.3 Photo Playback Options

During photo playback, press **Menu** button to display or hide the option menu at the bottom of the screen. You can get following functions though the Option menu during photo playback.



Slideshow Control

- Select to choose the **Interval (Slide Timing)** and **Transition effect (Slide Transition)** of the slideshow.

Repeat Mode

- Choose a repeat mode among **Repeat off**, **Repeat all** and **Shuffle Loop** from option menu.

Select Music

- Select to turn on/off **Background music** during slideshow playback.
- **Select music** to specify the background music during photo playback.

Video Setting

- Select to adjust the value of **Brightness, Contrast, Saturation and Hue**.

3.4 Music Library

Select the Music icon on the main menu to enter into music library interface. Only supported files will be displayed. This player supports MP3, OGG, WMA, WAV and FLAC audio files.



3.4.1 Music Library Options

In music library, press **Option** button to display the option menu, you can get following functions though the option menu.



Quick-Search

- Choose the **Search** option in the option menu and you can search for a photo by filter to locate the specific music.

View Mode

- Choose a view mode among **Thumbnails**, **List**, and **Preview** from option menu or **go to** a specified **folder**.

Filter options

- Choose **Albums** to search for music files by album.
- Choose **Artists** to search for music files by artist.
- Choose **Genres** to search for music files by genre.
- Choose **Years** to search for music files by modified year.
- Choose **Playlists** to search for music by generated playlist.

Sorting Mode

- Choose to sort by **Name**, **Recently Added** or **Recently Played** from option menu.

3.4.2 Music Playback Control

You can access the following functions during music playback.

Button	Function
Play/Pause	Begin/Pause playback.
FR / FF	Fast rewind or fast forward. Press repeatedly to select the speed.
Prev / Next	View the previous or next movie.
Option	Display or hide the option menu during playback.
VOL+/-	Increase/Decrease the volume.
Repeat	Set the repeat option.
Shuffle	Select the shuffle mode.

3.4.3 Music Playback Options

During music playback, press **Menu** button to display or hide the option menu at the bottom of the screen. You can get following functions though the Option menu during music playback.



Repeat Mode

- Choose a repeat mode among **Repeat off**, **Repeat one**, **Repeat all** and **Shuffle Loop** from option menu.

3.5 File Manager

The file manager allows you to browse and play music, photo and movie files stored on an external USB device, memory card and network.



Note: While browsing high definition video files (resolution up to 720p / 1080i / 1080p) via WLAN, the video might be buffering. It is normal due to the limit of network speed or signal strength.

3.5.2.1 Browsing through workgroup

You can choose the workgroup which your PC belongs to from the workgroup list, find your PC name, and press the **OK** button to confirm. Then you can select and play the shared media files that you want to browse.

Note: Due to different network conditions, sometimes the workgroup might not be accessed or shown in the list. And then you need to use '**My_Shortcuts**' to browse shared files.

3.5.2.2 Browsing through 'My_Shortcuts'

You can also set '**Specific File Server IP**' and access it from '**My_Shortcuts**' in the menu.

- Press the **Red** button and a popup menu appears.



- Select **Add** to open a popup menu where you can input **Label**, **Net User ID**, **Net Password**, **Domain**, **Host Name**, and **Specific File Server IP**. Select **OK** to confirm, **Cancel** to cancel, and **Simple** / **Detail** to switch between simple and advanced options.



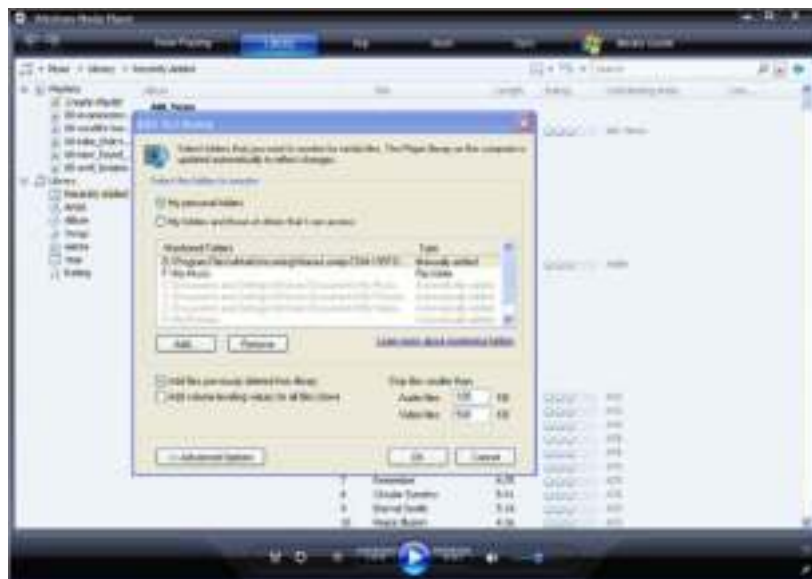
-

A built-in UPnP (Universal Plug and Play) client has been integrated on the system, which enables the player to auto-detect UPnP Media Servers on the network to browse and stream media files from them.

There're a lot of free and commercial UPnP Media Server software, such as Windows Media Connect, Windows Media Player 11, XBMC Media Center (Linux/Mac/Windows), MediaTom (Linux), etc. Please install one of them on your computer. In the following chapters, we will take Windows Media Player 11 on Microsoft Windows XP SP2 for an example.

The Media Sharing feature of Windows Media Player 11 lets you enjoy the contents of your Windows Media Player library from anywhere in your home.

Open Windows Media Player 11, click Library -> Add Library -> Advanced Options to add or remove media files from the library.



- Click **Library** -> **Media Sharing**, then you can allow or deny devices to access the media library. Click **Allow** to authorize your player.



3.5.3.3 Streaming Media on your Player

- Connect your player to the home network (LAN or Wi-Fi).
- Visit **File Manager** - > **UPnP** menu on the player, select the UPnP-server, and press **OK**.



- Then you can browse the media library shared by Windows Media Player 11.

Note: Make sure your player and your computer are on the same local area network and subnet. Firewalls may prevent your player to communicate with your computer. Please open the ports manually and add your player to the 'trusted' list, or disable the firewall temporarily.

3.6 Playlist Management

3.6.1 Create music playlist

To create a playlist, please enter the USB storage device via **File Manger**. Then press **Green** button on the remote control and select **Multiple Select** option. In the file explorer you can navigate by **Up/Down/Left/Right/Next/Prev** button and add or delete files to the **File List** by the **Play** button.

In order to switch between different folders, please select the upper folder icon:



To save the playlist, please press the **Green** button and name the playlist.



3.6.2 Playback music playlist

Enter the music library, press **Option** button and choose **Playlists** to show your music playlists.



3.6.3 Create album playlist

To create an album playlist, please enter the USB storage device via **File Manger**. Then press **Green** button on the remote control and select **Multiple Select** option. In the file explorer you can navigate by **Up/Down/Left/Right/Next/Prev** button and add or delete files to the **File List** by the **Play** button.

In order to switch between different folders, please select the upper folder icon:



To save the album playlist, please press the **Green** button and name the playlist.



3.6.4 Playback Album playlist

Enter the photo library, press **Option** button and choose **Albums** to show your album playlists.



3.7 Copy und Delete Function

3.7.1 Copy under File Manager

To start the copy function, please enter the USB storage device via **File Manger**. The press **Green** button on the remote control and select **Multiple Select** option. In the file explorer you can navigate by **Up/Down/Left/Right/Next/Prev** button and add or delete files to the **File List** by the **Play** button.



In order to switch between different folders, please select the upper folder icon:



To start the copy procedure, please press the **Green** button and select **Copy**.



Select the **destination** or create a **new folder** and then press **Play** button to finish the copy process.



Note: If you want to copy a single file, just press **Green** button and then **Copy** to start the copy procedure.

3.7.2 Delete under File Manager

To start the Delete function, please enter the USB storage device via **File Manger**. The press **Green** button on the remote control and select **Multiple Select** option. In the file explorer you can navigate by **Up/Down/Left/Right/Next/Prev** button and add or delete files to the **File List** by the **Play** button.



In order to switch between different folders, please select the upper folder icon:



To start the Delete procedure, please press the **Green** button and select **Delete**.

Note: If you want to delete a single file, just press **Green** button and then **Delete** to start the delete procedure.

3.8 SAMBA Server and Client

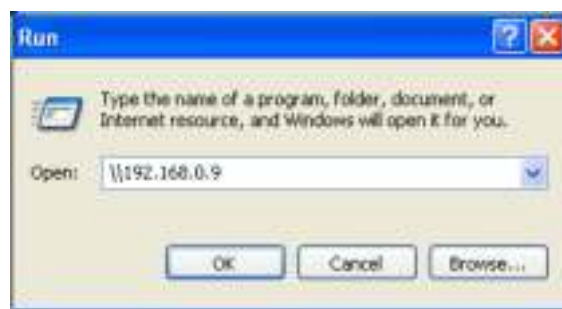
This player can be used either as a SAMBA Server or as a client.

3.8.1 SAMBA Client

- You can stream media files shared on the home network. Please refer to '**3.5.2 A/V Streaming via Network**' for more details.

3.8.2 SAMBA Server

- This product works as a NAS (Network Attached Storage) device when it is attached to the home network. This feature allows users to store and retrieve large amounts of data from their own local network.
- When the network connection is done correctly and ready for use, please turn on **SAMBA (NAS MODE)** function in the setup menu in advance (refer to *2.1.4 Changing Network Settings* for more details), and then type in: \\IP Address or \\Host name in the Run window (click Run in the start menu) or in the address bar of **Microsoft® Internet Explorer**. If the IP address of the product is 192.168.0.9, please type in: \\192.168.0.9, and click OK or press the Enter button on the keyboard.



Under Windows Vista and Windows 7, please type in: \\192.168.0.9 at the search bar, then press the Enter button on the keyboard.



You can manage the files stored on the USB storage device of the product. In this way, you can also playback and copy files via network between your PC and the USB storage device of this product.

Note: Please disable **Auto standby** in **SETUP/System** to avoid auto power off in NAS mode. If there's no USB storage device connected to the players, the NAS mode is not available.

3.9 BitTorrent Download

BitTorrent is a peer-to-peer file sharing protocol used for distributing large amounts of data on the Internet. A BitTorrent utility (btpd – BitTorrent Protocol Daemon) has been integrated into the player (Please refer to **BT process** in chapter '**2.1.4 Network Settings**' for enable/ disable BT download function).

The BitTorrent client btpd is running in daemon (a process running in the background) mode and you can manipulate the process via the Web server.

- Click **BitTorrent Download** on the home page of Neighbor Web, then you will enter the BitTorrent Download page.



3.9.1 Add new torrent

- Click **Add new torrent** on the BitTorrent Download page.



- Click **Browse** to upload a torrent file, and click **Yes** to confirm.

3.9.2 Managing the downloads

The BitTorrent Download page also allows you to start, stop, delete torrents, and set priorities for torrents, as well as view the status of current torrents.



- Click **Start** to begin download.
- Click **Stop** to stop download.
- Click **Delete** to delete the selected torrent.
- Click **Refresh** to refresh the current status.
- Click **Down** arrow to decrease the priority for the selected torrent.
- Click **Up** arrow to increase the priority for the selected torrent.

3.9.3 Settings

- Click **Setting** on the BitTorrent Download page to enter the BitTorrent Setting page.



In the BitTorrent Setting page, you can configure the following settings.

- Set the maximum download rate.
- Set the maximum upload rate.
- Set the idle hours to start the next download automatically.
- Set the seeding hours.
- Set to delete the finished torrent files automatically or not.
- Set the maximum number of simultaneous download tasks.

Note: Please disable **Auto standby** in **SETUP/System** to avoid auto power off in BT mode. If there's no USB storage device connected to the players, the BT mode is not available.

4. Upgrading the Firmware

The firmware is the operating system (OS) installed on the device. Firmware upgrades can bring new features, improvements and bug fixes.

Please refer to USB **Upgrade** in chapter '**2.1.5 Miscellaneous**' for more details.

You can also use the following method to upgrade the firmware:

- Copy 'install.img' to the root directory of a USB key;
- Plug the USB key to the USB HOST port on the player;
- Press and hold the POWER button on the front panel, and connect the player with power supply;
- Wait for more than 30 seconds, and then lose your finger on the POWER button.

Then the upgrade process will start automatically. If it is connected to a TV set, an install page will appear on the TV screen.

5. Appendixes

I/O INTERFACES SUPPORTED:

- Gigabit Ethernet port 10/100/1000 Mbps (RJ45)
- HDMI V1.3 interface
- USB 2.0 HOST port x 2 (compatible to USB 1.1)
- Card Reader (supports SD/SDHC/MMC)
- Composite (CVBS) A/V jack
- S/PDIF optical jack
- DC-IN 5V

FILE SYSTEM SUPPORTED:

- FAT/FAT32/NTFS/EXT3

VIDEO FORMATS SUPPORTED:

- MKV, ISO (DVD & BluRay), AVCHD, MTS, M2TS, AVI, VOB, MOV, MP4, MPG, TS, WMV, DAT, IFO, RM, RMVB, M4V, ASF, FLV, XviD, DivX 3/4/5, DVD menu playback, H.264, resolution up to 720p/1080i/1080p

AUDIO FORMATS SUPPORTED:

- MP3, OGG, WMA, WAV, FLAC (32 – 320 kbps)
- Stereo/Dolby Digital AC3 5.1 (pass-through & downmix to stereo),
Dolby Digital 5.1 (pass-through & downmix to stereo),
Dolby Digital Plus 7.1 (pass-through),
DTS Digital Surround 5.1 & 7.1 (pass-through & downmix to stereo)

PICTURE FORMATS SUPPORTED:

- HD JPEG, JPG, BMP, GIF, TIF, PNG (JPEG: 6048x4032 - 24MP)

VIDEO CODECS SUPPORTED:

- MPEG-1
- HD MPEG-2
- HD MPEG-4 SP/ASP/AVC (H.264)
- WMV9 (VC-1)
- RealNetworks (RM/RMVB) 8/9/10, up to 720p

AUDIO CODECS SUPPORTED:

- MP2/3, OGG Vorbis, WMA (DRM, and Advanced Profile not supported), PCM, LPCM, MS-ADPCM, COOK, RA-Lossless

MENU LANGUAGE SUPPORTED:

- ENGLISH, GERMAN, FRENCH, SPANISH, ITALIAN, DUTCH, SLOVENIAN, CZECH, SLOVAK, TURKISH, GREEK, RUSSIAN, POLISH, CHINESE, BULGARIAN, VIETNAM, ROMANIAN, HEBREW, HUNGARIAN, ARABIC, PORTUGUESE, KOREAN, THAI, JAPANESE
-

SUBTITLE FORMATS SUPPORTED:

- SRT, SMI, SSA, ASS, IDX/SUB, SUB
 - Subtitle control: color/offset/size
 - Unicode (UTF8), BIG5 (Traditional Chinese), Western, Turkish, Central European, Greek, Cyrillic, SE European, Russian, Hebrew, Arabic, Japanese, Thai
-

NETWORK FEATURE

- 10/100/1000Mbps Auto-Negotiation Ethernet
 - 802.11b/g/n Wi-Fi, up to 300Mbps (supported by optional Wi-Fi USB Adapter)
-

Note: The specifications and design of this product are subject to change without notice.

6. Frequently Asked Questions

Question 1. When I try to disconnect the USB device, I keep on getting “The device ‘Generic volume’ cannot be stopped right now. Try stopping the device again later.” message, what should I do?

Answer:

Close any program that might be accessing data on the player, including Windows® Explorer. If it does not work, close all programs and wait for another 20 seconds, then try the green arrow icon again. If it still does not work, you should shut down the player and disconnect the USB cable.

Question 2. I find new file names and folder names that I never created before or they have strange gibberish names.

Answer:

Most likely, the player's file allocation table (FAT) has been corrupted. This might be due to the player shutting down (due to low battery power) while reading or writing to your computer by the USB connection. Windows and Macintosh often write extra files to the hard disk such as finder.def or System volume info. These are normal and will not do any harm to the player.

Question 3. My files have disappeared from the player.

Answer:

Make sure that you browse your files via the correct browser mode which means correct filtered views such as Photos, Music, or Movies.

Question 4. During power on, why does the TV will have a short flashing, blue screen or screensaver?

Answer:

This is normal, when the system initializes, it will setup the corresponding parameters so it can output the correct video signal to the TV, during the initializing time, the TV will receive incorrect signals or the signals will not be stable and will cause the TV screen to flash, some TV's will treat this as no signal, and will display a blue screen or screensaver.

Question 5. I cannot get SSID name, the screen always displays: ‘Can’t get any SSID!!’

Answer:

When the Wi-Fi USB Adapter is connected to the player, it needs some time to get initialized. Please wait for about 1~2 minutes and try refreshing the SSID list again.

Question 6. I cannot see files shared on my computer via File Manager->Network menu.

Answer:

Please check following items:

- 1) Connect the player to network and obtain an IP address first;
- 2) Please enable NetBIOS of TCP/IP on computer;
- 3) Please check your PC's firewall settings;
- 4) Please enable your PC's 'Guest' account;

- 5) Please share the folders which you wish to browse on your PC, and make sure that 'Everyone' or 'Guest' has the right to access.

Question 7. I configured everything correctly, but still cannot get the wireless network or UPnP function to work.

Answer:

Are you using a firewall such as Norton Internet Security, McAfee Personal Firewall, Zone Alarm, etc. or even the built-in firewall of Windows XP? (Don't forget that Service Pack 2 for Windows XP automatically upgrades your firewall and turn it on by default)

If you have a firewall, it may need to be configured or have exceptions created to allow you to see and communicate with the player on the network. To test if your firewall is preventing network communication (including PING and access shared folders), try disabling it to see if you can connect. If you can connect with the firewall disabled, you may need to add the player to the 'Trusted' list or configure the firewall for local intranet access. Worst-case, disable your firewall long enough to use the player, then enable it again when done.

Question 8. I am using the 802.11n Wi-Fi dongle with an 802.11n wireless router, why the speed is still 802.11g 54Mbps rather than 300Mbps?

Answer:

The IEEE 802.11n Draft standard prohibits using high throughput with WEP or TKIP as the unicast cipher. If you use these encryption methods (e.g. WEP, WPA-TKIP), your data rate will drop to 54 Mbps. You may contact the Access Point or router manufacturer to download the latest firmware, or try other encryption methods (WPA2-AES or WPA2-TKIP), or choose to configure an unsecured profile, but this option is not recommended.

7. Copyrights and Trademarks

Copyrights

All rights reserved. No part of this manual may be reproduced, or transmitted in any form or by any means, whether by electronically or mechanically, without the express written permission from the copyright holder.

Copyrighted materials, such as software, music files, or movies, are protected by local law, and may not be illegally copied or used without permission from the copyright owner.

Trademarks

Microsoft and Windows are registered trademarks of Microsoft Corporation.

All other trademarks are property of their respective holders.



Manufactured under license under U.S. Patent #'s: 5,451,942; 5,956,674; 5,974,380; 5,978,762; 6,487,535 & other U.S. and worldwide patents issued & pending. DTS and the Symbol are registered trademarks, & DTS 2.0+ Digital Out and the DTS logos are trademarks of DTS, Inc. Product includes software. © DTS, Inc. All Rights Reserved.



Manufactured under license from Dolby Laboratories.

Dolby and the double-D symbol are registered trademarks of Dolby Laboratories.

8. Warranty

What your warranty *does not* cover:

- Acts of nature, such as fire, static discharge.
- Damage from unauthorized repair, alteration or accident.
- Damage from misuse or neglect.
- A unit that has been modified or incorporated into other products or is used for institutional or other commercial purposes.
- Loss of customer's software, firmware, information, or memory data.
- Improper handling or installation.

9. GPL Statement

This product contains free software which is licensed under the GNU General Public License. After you purchase this product, you may procure, modify or distribute the source code of the GPL/LGPL software that is used in this product.

To obtain a copy of our open source software, please contact our support center and we will provide you with a CD-ROM of the source code that is used, charging only the actual expense involved. However, please be noted that we cannot provide guarantee with the source code, and there is also no technical support for the source code from us.

TECHNICAL INFORMATION

License information for the software used in the unit.

This product contains Free Software which is licensed under the GNU General Public License. After you purchase this product, you may procure, modify or distribute the source code of the GPL/LGPL software that is used in this product.

If you contact our Support Center, we will provide you with a CD-ROM of the source code that is used, charging only the actual expensed involved. However, please be noted that we cannot provide guarantee with the source code, and there is also no technical support for the source code from us.

GNU GENERAL PUBLIC LICENSE

Version 2, June 1991

Copyright (C) 1989, 1991 Free Software Foundation, Inc.
51 Franklin Street, Fifth Floor, Boston, MA 02110-1301, USA

Everyone is permitted to copy and distribute verbatim copies of this license document, but changing it is not allowed.

Preamble

The licenses for most software are designed to take away your freedom to share and change it. By contrast, the GNU General Public License is intended to guarantee your freedom to share and change free software--to make sure the software is free for all its users. This General Public License applies to most of the Free Software Foundation's software and to any other program whose authors commit to using it. (Some other Free Software Foundation software is covered by the GNU Lesser General Public License instead.) You can apply it to your programs, too.

When we speak of free software, we are referring to freedom, not price. Our General Public Licenses are designed to make sure that you have the freedom to distribute copies of free software (and charge for this service if you wish), that you receive source code or can get it if you want it, that you can change the software or use pieces of it in new free programs; and that you know you can do these things.

To protect your rights, we need to make restrictions that forbid anyone to deny you these rights or to ask you to surrender the rights. These restrictions translate to certain responsibilities for you if you distribute copies of the software, or if you modify it.

For example, if you distribute copies of such a program, whether gratis or for a fee, you must give the recipients all the rights that you have. You must make sure that they, too, receive or can get the source code. And you must show them these terms so they know their rights.

We protect your rights with two steps: (1) copyright the software, and (2) offer you this license which gives you legal permission to copy, distribute and/or modify the software.

Also, for each author's protection and ours, we want to make certain that everyone understands that there is no warranty for this free software. If the software is modified by someone else and passed on, we want its recipients to know that what they have is not the original, so that any problems introduced by others will not reflect on the original authors' reputations.

Finally, any free program is threatened constantly by software patents. We wish to avoid the danger that redistributors of a free program will individually obtain patent licenses, in effect making the program proprietary. To prevent this, we have made it clear that any patent must be licensed for everyone's free use or not licensed at all.

The precise terms and conditions for copying, distribution and modification follow.

TERMS AND CONDITIONS FOR COPYING, DISTRIBUTION AND MODIFICATION

0. This License applies to any program or other work which contains a notice placed by the copyright holder saying it may be distributed under the terms of this General Public License. The "Program", below, refers to any such program or work, and a "work based on the Program" means either the Program or any derivative work under copyright law: that is to say, a work containing the Program or a portion of it, either verbatim or with modifications and/or translated into another language. (Hereinafter, translation is included without limitation in the term "modification".) Each licensee is addressed as "you".

Activities other than copying, distribution and modification are not covered by this License; they are outside its scope. The act of running the Program is not restricted, and the output from the Program is covered only if its contents constitute a work based on the Program (independent of having been made by running the Program). Whether that is true depends on what the Program does.

1. You may copy and distribute verbatim copies of the Program's source code as you receive it, in any medium, provided that you conspicuously and appropriately publish on each copy an appropriate copyright notice and disclaimer of warranty; keep intact all the notices that refer to this License and to the absence of any warranty; and give any other recipients of the Program a copy of this License along with the Program.

You may charge a fee for the physical act of transferring a copy, and you may at your option offer warranty protection in exchange for a fee.

2. You may modify your copy or copies of the Program or any portion of it, thus forming a work based on the Program, and copy and distribute such modifications or work under the terms of Section 1 above, provided that you also meet all of these conditions:

- a) You must cause the modified files to carry prominent notices stating that you changed the files and the date of any change.
- b) You must cause any work that you distribute or publish, that in whole or in part contains or is derived from the Program or any part thereof, to be licensed as a whole at no charge to all third parties under the terms of this License.
- c) If the modified program normally reads commands interactively when run, you must cause it, when started running for such interactive use in the most ordinary way, to print or display an announcement including an appropriate copyright notice and a notice that there is no warranty (or else, saying that you provide a warranty) and that users may redistribute the program under these conditions, and telling the user how to view a copy of this License. (Exception: if the Program itself is interactive but does not normally print such an announcement, your work based on the Program is not required to print an announcement.)

These requirements apply to the modified work as a whole. If identifiable sections of that work are not derived from the Program, and can be reasonably considered independent and separate works in themselves, then this License, and its terms, do not apply to those sections when you distribute them as separate works. But when you distribute the same sections as part of a whole which is a work based on the Program, the distribution of the whole must be on the terms of this License, whose permissions for other licensees extend to the entire whole, and thus to each and every part regardless of who wrote it.

Thus, it is not the intent of this section to claim rights or contest your rights to work written entirely by you; rather, the intent is to exercise the right to control the distribution of derivative or collective works based on the Program.

In addition, mere aggregation of another work not based on the Program with the Program (or with a work based on the Program) on a volume of a storage or distribution medium does not bring the other work under the scope of this License.

3. You may copy and distribute the Program (or a work based on it, under Section 2) in object code or executable form under the terms of Sections 1 and 2 above provided that you also do one of the following:

- a) Accompany it with the complete corresponding machine-readable source code, which must be distributed under the terms of Sections 1 and 2 above on a medium customarily used for software interchange; or,
- b) Accompany it with a written offer, valid for at least three years, to give any third party, for a charge no more than your cost of physically performing source distribution, a complete machine-readable copy of the corresponding source code, to be distributed under the terms of Sections 1 and 2 above on a medium customarily used for software interchange; or,
- c) Accompany it with the information you received as to the offer to distribute corresponding source code. (This alternative is allowed only for noncommercial distribution and only if you received the program in object code or executable form with such an offer, in accord with Subsection b above.)

The source code for a work means the preferred form of the work for making modifications to it. For an executable work, complete source code means all the source code for all modules it contains, plus any associated interface definition files, plus the scripts used to control compilation and installation of the executable. However, as a special exception, the source code distributed need not include anything that is normally distributed (in either source or binary form) with the major components (compiler, kernel, and so on) of the operating system on which the executable runs, unless that component itself accompanies the executable. If distribution of executable or object code is made by offering access to copy from a designated place, then offering equivalent access to copy the source code from the same place counts as distribution of the source code, even though third parties are not compelled to copy the source along with the object code.

4. You may not copy, modify, sublicense, or distribute the Program except as expressly provided under this License. Any attempt otherwise to copy, modify, sublicense or distribute the Program is void, and will automatically terminate your rights under this License. However, parties who have received copies, or rights, from you under this License will not have their licenses terminated so long as such parties remain in full compliance.

5. You are not required to accept this License, since you have not signed it. However, nothing else grants you permission to modify or distribute the Program or its derivative works. These actions are prohibited by law if you do not accept this License. Therefore, by modifying or distributing the Program (or any work based on the Program), you indicate your acceptance of this License to do so, and all its terms and conditions for copying, distributing or modifying the Program or works based on it.

6. Each time you redistribute the Program (or any work based on the Program), the recipient automatically receives a license from the original licensor to copy, distribute or modify the Program subject to these terms and conditions. You may not impose any further restrictions on the recipients' exercise of the rights granted herein. You are not responsible for enforcing compliance by third parties to this License.

7. If, as a consequence of a court judgment or allegation of patent infringement or for any other reason (not limited to patent issues), conditions are imposed on you (whether by court order, agreement or otherwise) that contradict the conditions of this License, they do not excuse you from the conditions of this License. If you cannot distribute so as to satisfy simultaneously your obligations under this License and any other pertinent obligations, then as a consequence you may not distribute the Program at all. For example, if a patent license would not permit royalty-free redistribution of the Program by all those who receive copies directly or indirectly through you, then the only way you could satisfy both it and this License would be to refrain entirely from distribution of the Program.

If any portion of this section is held invalid or unenforceable under any particular circumstance, the balance of the section is intended to apply and the section as a whole is intended to apply in other circumstances.

It is not the purpose of this section to induce you to infringe any patents or other property right claims or to contest validity of any such claims; this section has the sole purpose of protecting the integrity of the free software distribution system, which is implemented by public license practices. Many people have made generous contributions to the wide range of software distributed through that system in reliance on consistent application of that system; it is up to the author/donor to decide if he or she is willing to distribute software through any other system and a licensee cannot impose that choice.

This section is intended to make thoroughly clear what is believed to be a consequence of the rest of this License.

8. If the distribution and/or use of the Program is restricted in certain countries either by patents or by copyrighted interfaces, the original copyright holder who places the Program under this License may add an explicit geographical distribution limitation excluding those countries, so that distribution is permitted only in or among countries not thus excluded. In such case, this License incorporates the limitation as if written in the body of this License.

9. The Free Software Foundation may publish revised and/or new versions of the General Public License from time to time. Such new versions will be similar in spirit to the present version, but may differ in detail to address new problems or concerns.

Each version is given a distinguishing version number. If the Program specifies a version number of this License which applies to it and "any later version", you have the option of following the terms and conditions either of that version or of any later version published by the Free Software Foundation. If the Program does not specify a version number of this License, you may choose any version ever published by the Free Software Foundation.

10. If you wish to incorporate parts of the Program into other free programs whose distribution conditions are different, write to the author to ask for permission. For software which is copyrighted by the Free Software Foundation, write to the Free Software Foundation; we sometimes make exceptions for this. Our decision will be guided by the two goals of preserving the free status of all derivatives of our free software and of promoting the sharing and reuse of software generally.

NO WARRANTY

11. BECAUSE THE PROGRAM IS LICENSED FREE OF CHARGE, THERE IS NO WARRANTY FOR THE PROGRAM, TO THE EXTENT PERMITTED BY APPLICABLE LAW. EXCEPT WHEN OTHERWISE STATED IN WRITING THE COPYRIGHT HOLDERS AND/OR OTHER PARTIES PROVIDE THE PROGRAM "AS IS" WITHOUT WARRANTY OF ANY KIND, EITHER EXPRESSED OR IMPLIED, INCLUDING, BUT NOT LIMITED TO, THE IMPLIED WARRANTIES OF MERCHANTABILITY AND FITNESS FOR A PARTICULAR PURPOSE. THE ENTIRE RISK AS TO THE QUALITY AND PERFORMANCE OF THE PROGRAM IS WITH YOU. SHOULD THE PROGRAM PROVE DEFECTIVE, YOU ASSUME THE COST OF ALL NECESSARY SERVICING, REPAIR OR CORRECTION.

12. IN NO EVENT UNLESS REQUIRED BY APPLICABLE LAW OR AGREED TO IN WRITING WILL ANY COPYRIGHT HOLDER, OR ANY OTHER PARTY WHO MAY MODIFY AND/OR REDISTRIBUTE THE PROGRAM AS PERMITTED ABOVE, BE LIABLE TO YOU FOR DAMAGES, INCLUDING ANY GENERAL, SPECIAL, INCIDENTAL OR CONSEQUENTIAL DAMAGES ARISING OUT OF THE USE OR INABILITY TO USE THE PROGRAM (INCLUDING BUT NOT LIMITED TO LOSS OF DATA OR DATA BEING RENDERED INACCURATE OR LOSSES SUSTAINED BY YOU OR THIRD PARTIES OR A FAILURE OF THE PROGRAM TO OPERATE WITH ANY OTHER PROGRAMS), EVEN IF SUCH HOLDER OR OTHER PARTY HAS BEEN ADVISED OF THE POSSIBILITY OF SUCH DAMAGES.