

EW-7612PIn V2

User Manual

11-2011 / v1.0



COPYRIGHT

Copyright © Edimax Technology Co., Ltd. all rights reserved. No part of this publication may be reproduced, transmitted, transcribed, stored in a retrieval system, or translated into any language or computer language, in any form or by any means, electronic, mechanical, magnetic, optical, chemical, manual or otherwise, without the prior written permission from Edimax Technology Co., Ltd.

Edimax Technology Co., Ltd. makes no representations or warranties, either expressed or implied, with respect to the contents hereof and specifically disclaims any warranties, merchantability, or fitness for any particular purpose. Any software described in this manual is sold or licensed as is. Should the programs prove defective following their purchase, the buyer (and not this company, its distributor, or its dealer) assumes the entire cost of all necessary servicing, repair, and any incidental or consequential damages resulting from any defect in the software. Edimax Technology Co., Ltd. reserves the right to revise this publication and to make changes from time to time in the contents hereof without the obligation to notify any person of such revision or changes.

The product you have purchased and the setup screen may appear slightly different from those shown in this QIG. For more information about this product, please refer to the user manual on the CD-ROM. The software and specifications are subject to change without notice. Please visit our website www.edimax.com for updates. All brand and product names mentioned in this manual are trademarks and/or registered trademarks of their respective holders.

Edimax Technology Co., Ltd.

Add: No. 3, Wu-Chuan 3rd Rd., Wu-Ku Industrial Park, New Taipei City, Taiwan

Tel: +886-2-77396888

Email: sales@edimax.com.tw

Contents

Chapter I: Product Information	1
1-1 Introduction and safety information	1
1-2 Safety Information	1
1-3 System Requirements	2
1-4 Package Contents.....	2
1-5 Familiar with your new wireless network card.....	3
CHAPTER II: Driver Installation and Configuration	4
2-1 Network Card Installation	4
2-2 Connect to Wireless Access Point	10
2-2-1 Using Edimax Utility.....	11
2-2-2 Using Windows Zero Configuration.....	16
2-3 Connection Profile Management	20
2-3-1 Add a new profile	21
2-3-2 Remove an existing profile	24
2-3-3 Edit an existing profile	25
2-3-4 Make a copy of existing profile.....	26
2-4 View Network Statistics, General Information, and Status	28
2-4-1 General Information	28
2-4-2 Status.....	29
2-5 Miscellaneous Settings	30
2-6 Establish secure connection with AP by WPS.....	31
2-6-1 PIN Code	33
CHAPTER III: Soft-AP Function	36
3-1 Switch to AP Mode and Station Mode	36
3-1-1 Configure SSID and Channel	38
3-1-2 Setup Soft-AP Security.....	40
3-2 Advanced Settings	41
3-3 Wireless Statistics	42
4-1 Hardware Specification.....	43
4-2 Troubleshooting.....	44
4-3 Glossary	46

Chapter I: Product Information

1-1 Introduction and safety information

Thank you for purchasing this high-speed wireless network card! Excepting common wireless standards 802.11b/g, this wireless network card is also able to access 802.11n wireless networks - data transfer rate up to 300Mbps, and that's five times faster than 802.11g wireless network!

With easy-to-install PCI express interface - a very common expansion port of computers - plug this wireless network card into any empty PCI express slot of your computer, just that simple!

Other features of this router including:

- Complies with 802.11b/g/n wireless standards
- Wireless data rates up to 300Mbps
- Features EZmax multi-language setup wizard
- Wireless speed up to 12 times faster and coverage 5 times further
- Features a hardware WPS (Wi-Fi Protected Setup) button
- Includes a low-profile bracket for small computers
- Supports major encryption methods like WEP, WPA, and WPA2 encryption
- PCI-e interface - you can get it installed on your computer in just few seconds
- Software AP - acting as an access point
- Green Power Saving - Smart transmit power control and auto-idle state adjustment

1-2 Safety Information

In order to keep the safety of users and your properties, please follow the following safety instructions:

1. This wireless network card is designed for indoor use only. DO NOT expose this network card to direct sun light, rain, or snow.
2. DO NOT put this network card at or near hot or humid places, like kitchen or bathroom. Also, do not left this wireless network card in the car in summer.

3. This network card is small enough to put in a child's mouth, and it could cause serious injury or could be fatal. If they throw the network card, the card will be damaged. PLEASE KEEP THIS NETWORK CARD OUT THE REACH OF CHILDREN!

4. This network card will become hot when being used for long time (***This is normal and is not a malfunction***). DO NOT put the network card on a paper, cloth, or other flammable objects after the network card has been used for a long time.

5. There's no user-serviceable part inside the network card. If you found that the network card is not working properly, please contact your dealer of purchase and ask for help. DO NOT disassemble the network card by yourself, warranty will be void.

6. If the network card falls into water, DO NOT USE IT AGAIN BEFORE YOU SEND THE CARD TO THE DEALER OF PURCHASE FOR INSPECTION.

7. If you smell something strange or even see some smoke coming out from the network card, switch the computer off immediately, and call dealer of purchase for help.

1-3 System Requirements

- An empty PCI express slot
- Windows XP, Vista, or Windows 7 operating system
- CD-ROM drive
- At least 100MB of available disk space

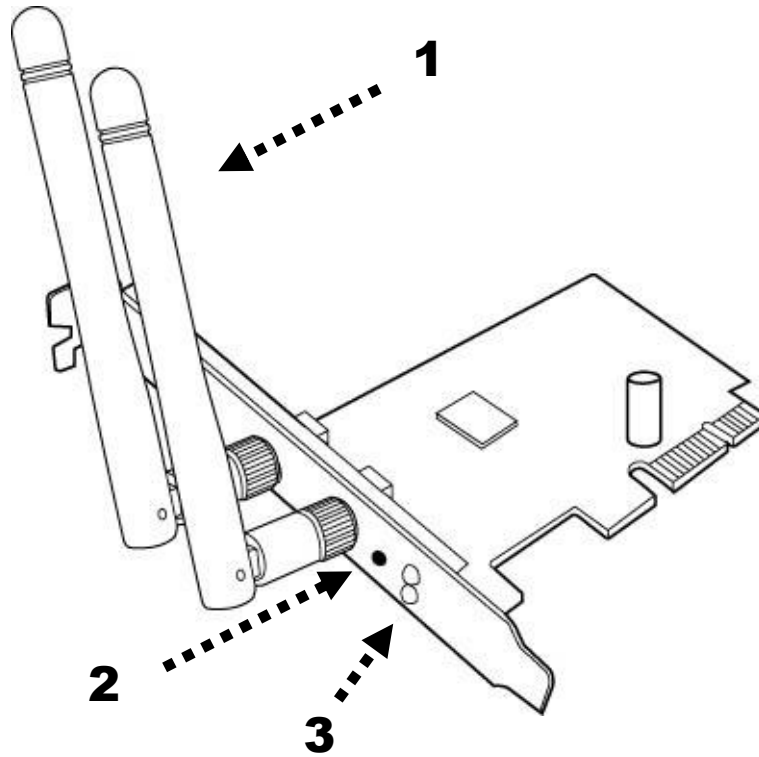
1-4 Package Contents

Before you starting to use this wireless network card, please check if there's anything missing in the package, and contact your dealer of purchase to claim for missing items:

- Wireless PCIe adapter x 1
- 3dBi antenna x 2
- Quick installation guide x 1
- CD with setup wizard, user manual & multi-language QIG x 1
- Low-profile bracket x 1

1-5 Familiar with your new wireless network card

1. Antenna
2. WPS Button
3. Link and Tx/Rx LED Definitions



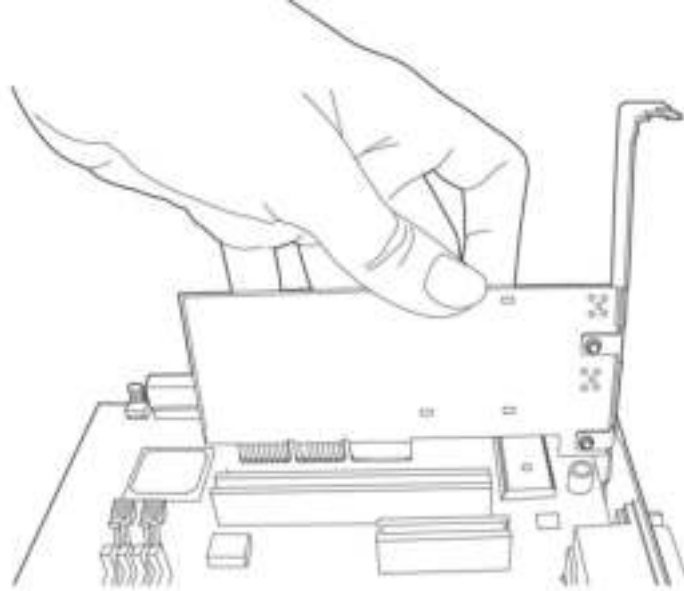
LED Name	Light Status	Description
Link	On	Link to a wireless access point
	Off	Not linked to any wireless access point
Tx/Rx	On	Wireless WPS function is activated. The network card will wait for 2 minutes to establish WPS connection.
	Blinking	Wireless network card is normally installed /Linked to a wireless access point / Transferring or receiving data.
	Off	No wireless activity

CHAPTER II: Driver Installation and Configuration

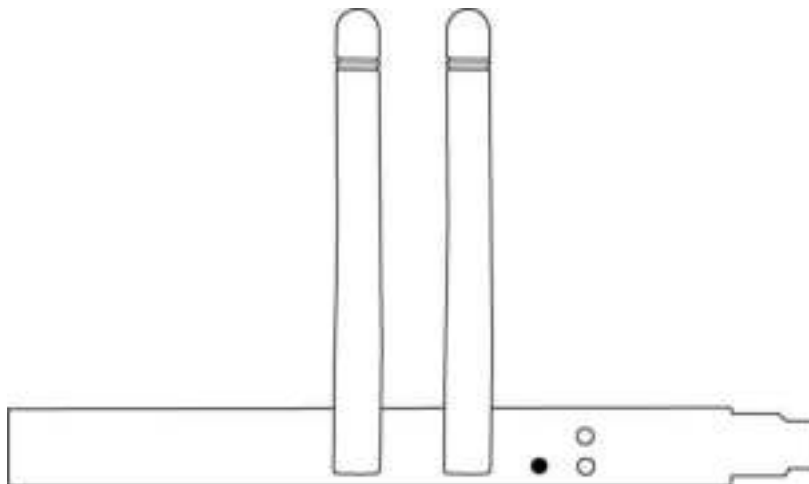
2-1 Network Card Installation

Please follow the following instructions to install your new wireless network card:

1. SWITCH THE COMPUTER OFF, remove the cover and insert the wireless network card into an empty PCI express slot of your computer and then replace the cover.

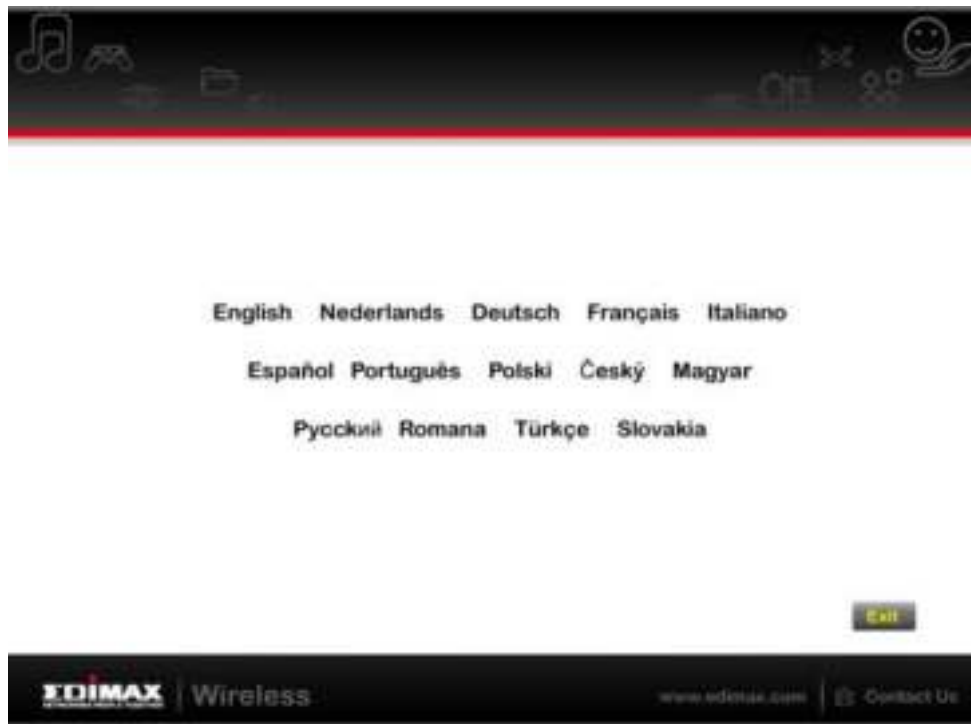


2. Install the antenna on the wireless network card, and make sure the antenna is securely installed. To improve radio reception, please adjust antenna to the proper position.



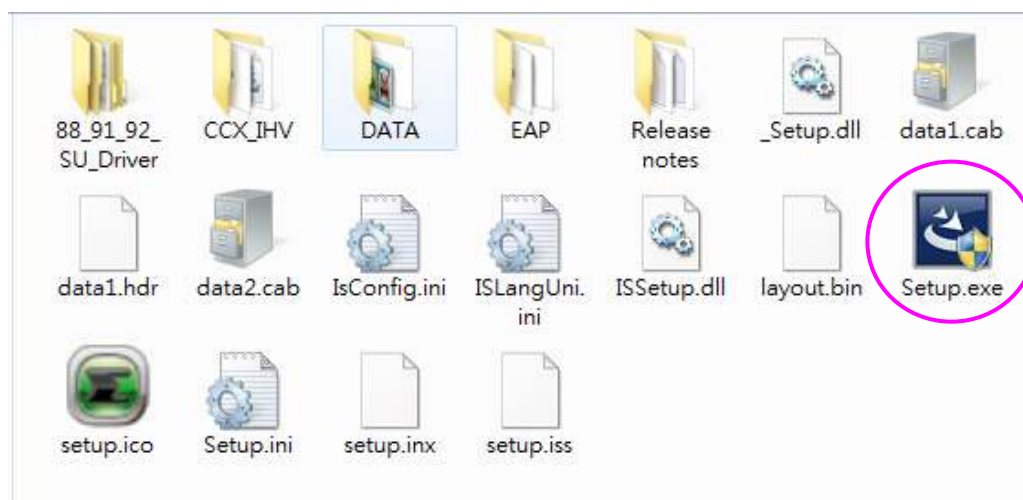
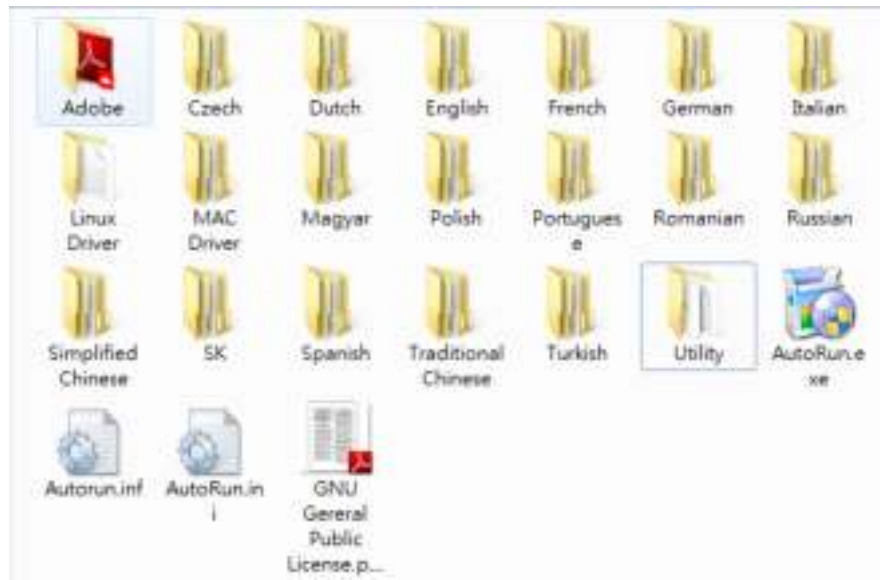
3. Software Installation, This wizard can be run in Windows XP/Vista/7. The following procedures are operated in Windows XP. You can install the Wireless Adapter by EZMAX Setup Wizard in the CD-ROM including in the package. The wizard is an easy and quick configuration tool for internet connection with series process.

When you start EZMAX Setup Wizard, you will get the following welcome screen. Please choose the language to start the configuration. The wizard will guide you to finish your network connection. We will not provide any instruction for the EZMAX Setup Wizard here.

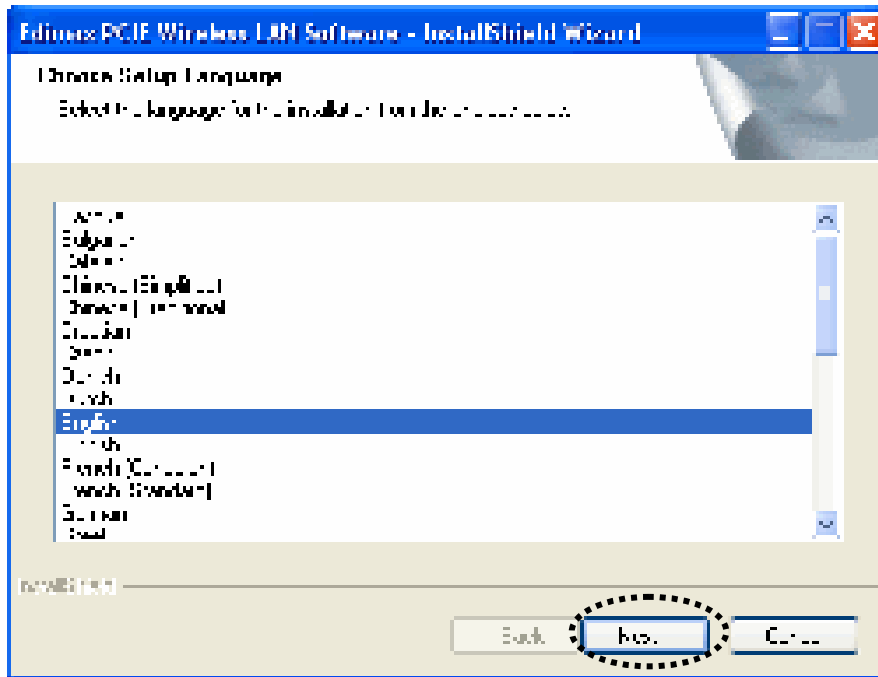


If you prefer the traditional setup procedure, please follow the instruction as following step.

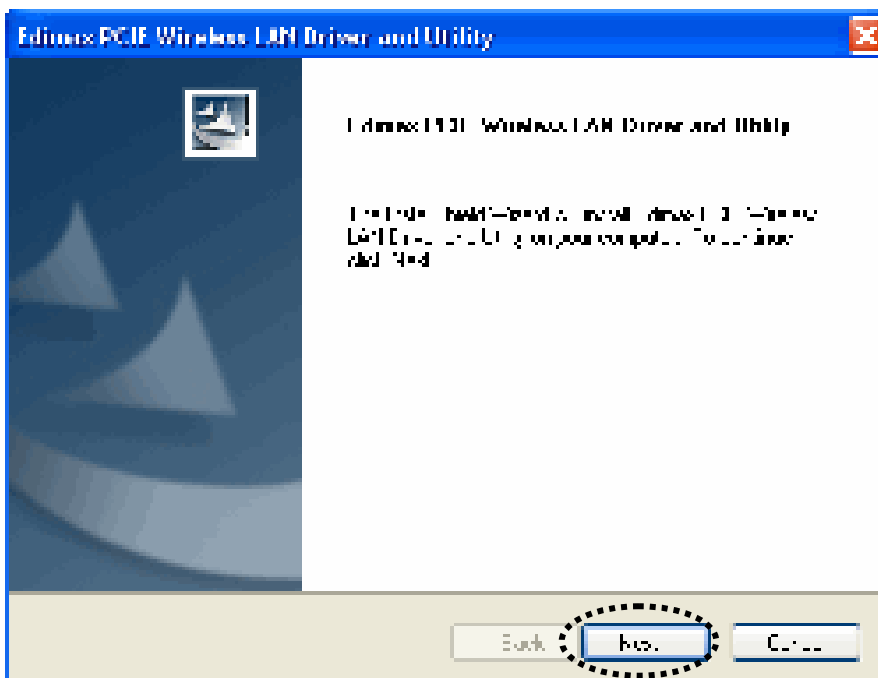
1. Insert device driver CDROM into the CD/DVD ROM drive of your computer, and execute 'Setup.exe' program in 'Utility' folder.



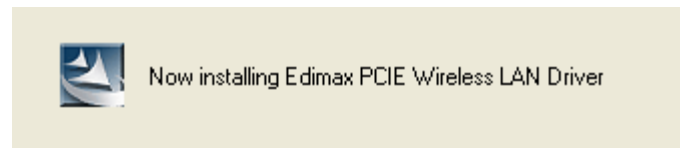
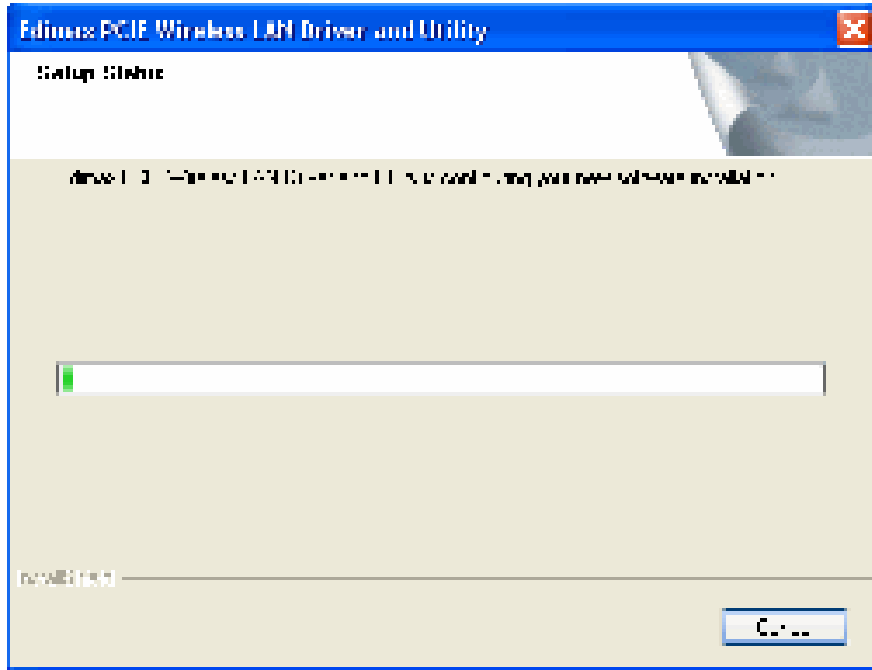
2. Please select the language you wish to use, then click 'Next'.



3. Click 'Next' to continue.

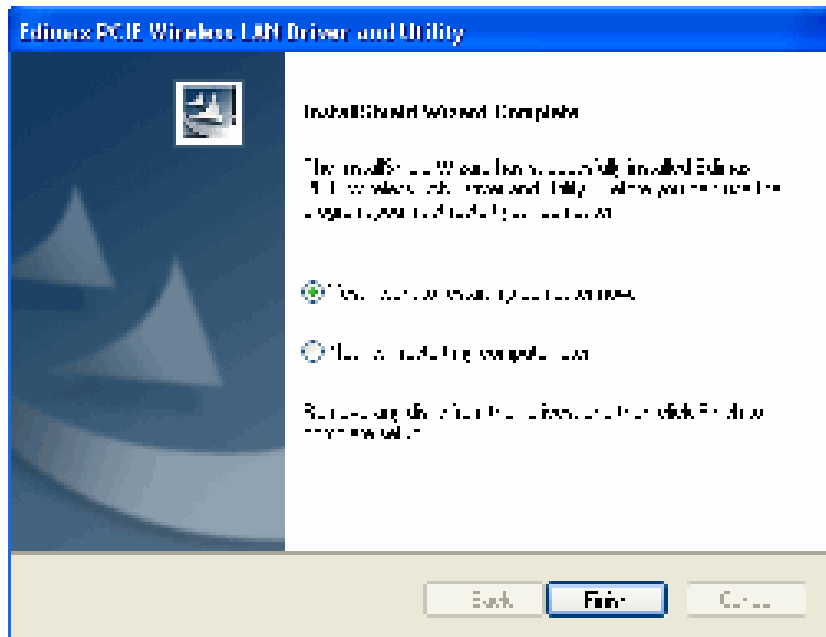


4. Installation procedure needs few minutes to complete, please be patient.

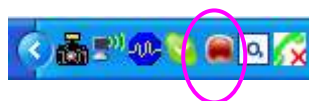


5. Click 'Finish' to reboot your computer to complete installation procedure. If you don't want to reboot computer now, select 'No, I'll restart my computer later' option and click 'Finish'. Please note you have to reboot your computer before you can use your new wireless network card.





- After installation is complete, wireless configuration utility will be shown in the desktop of your computer automatically. You will also see an icon at the lower-right corner of your windows system. If you put the mouse cursor on the icon, the status of wireless card will be displayed as a popup balloon.

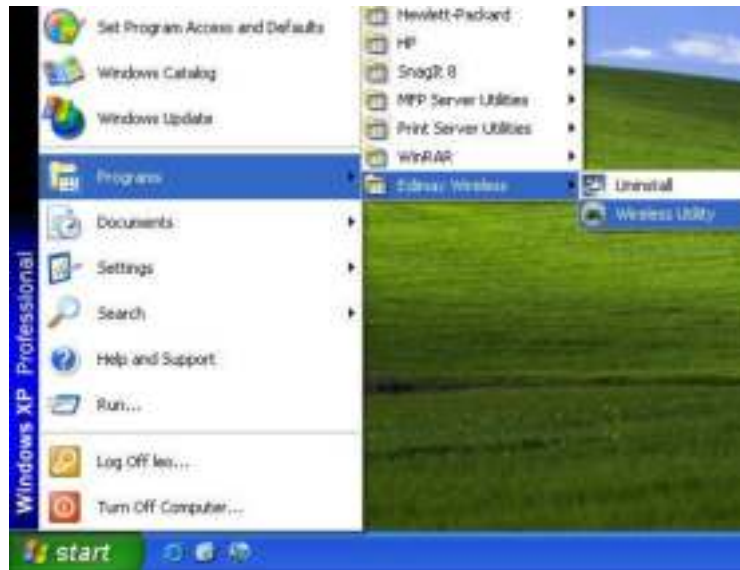


- When you want to configure your wireless connection, please right click on this icon, and a popup menu will appear. You can click 'Open Config Utility' to start configuration program.

If you want to close the configuration utility, please click 'Quit'.



- Please note that if you stopped config utility by 'Quit' function, you'll not be able to maintain the wireless link to the access point you wish to use. In this case, you can start config utility again by clicking 'Edimax Wireless Utility' icon from 'Start' -> 'All Programs' -> 'Edimax Wireless', as shown below.



2-2 Connect to Wireless Access Point

After the driver is correctly installed, it will try to connect to any unencrypted wireless access point automatically. If you want to connect to a specific wireless access point, or the access point you wish to connect uses encryption, you have to configure the wireless network card and input required parameters, to get connected to the wireless access point you wish to connect.

The current status of wireless connection will be displayed by Edimax configuration utility icon:



Wireless connection is established, good signal reception.



Wireless connection is established, normal signal reception.



Wireless connection is established, weak signal reception.



Connection is not established yet.



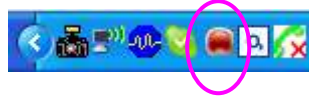
Wireless network card is not detected.

There are two ways you can configure your wireless network card to connect to wireless access point: using the Edimax configuration utility and using built-in windows zero configuration utility.

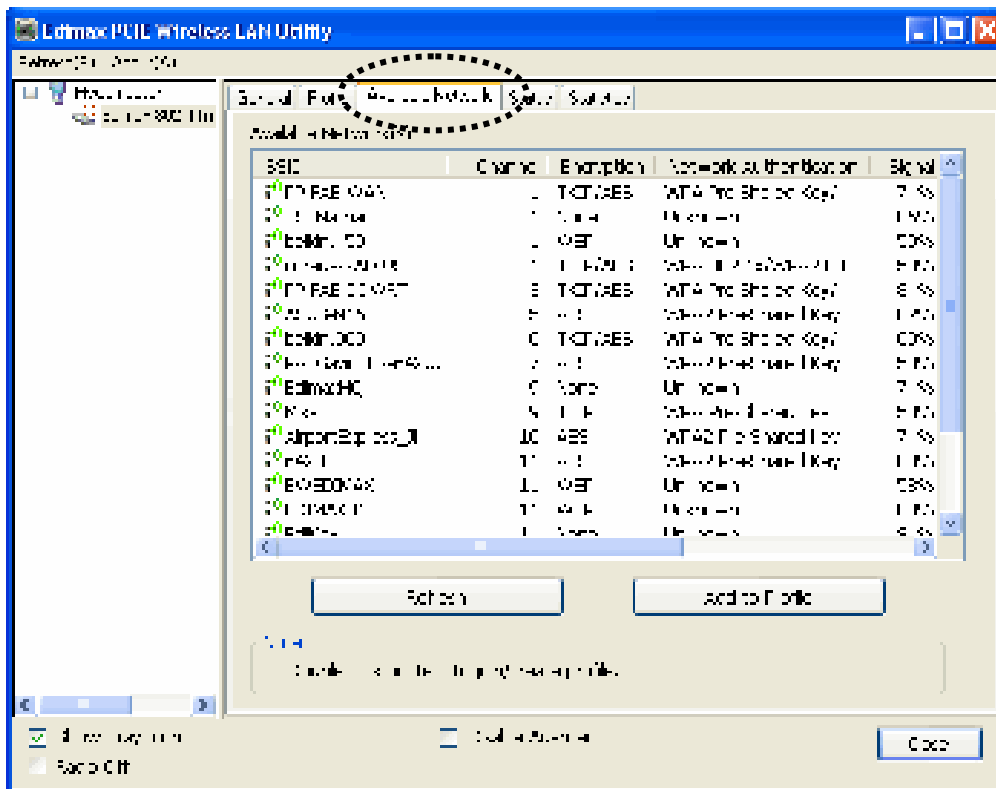
2-2-1 Using Edimax Utility

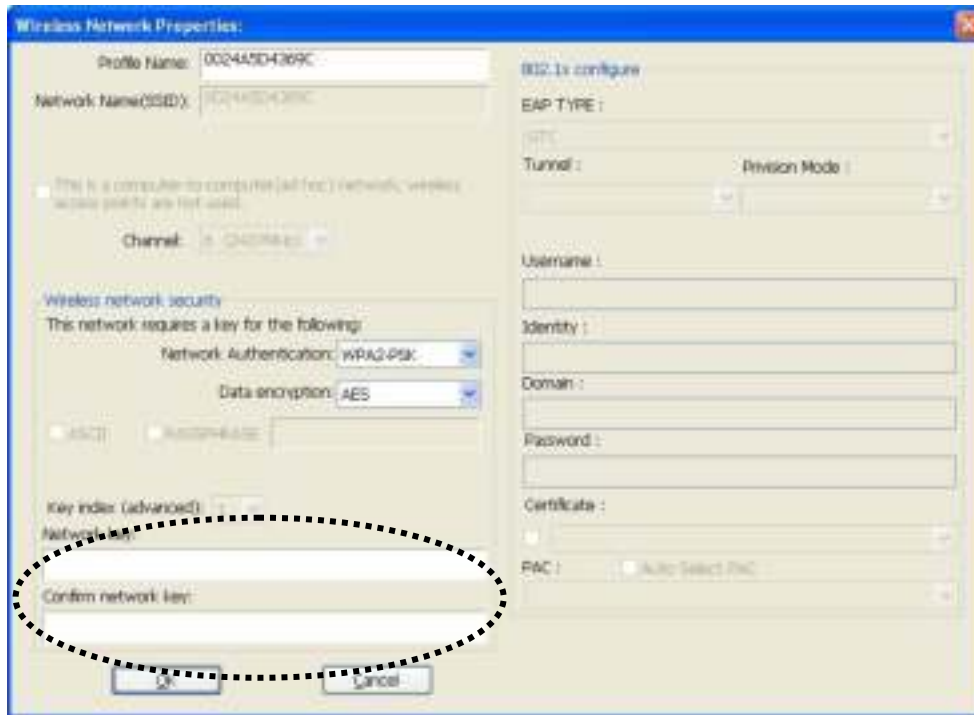
Please follow the following instructions to use Edimax configuration utility to connect to wireless access point.

1. Left-click the Edimax configuration utility icon located at lower-right corner of computer desktop, and configuration menu will appear:



2. Wireless utility will appear. Click 'Available Network' menu to search for wireless access points nearby.





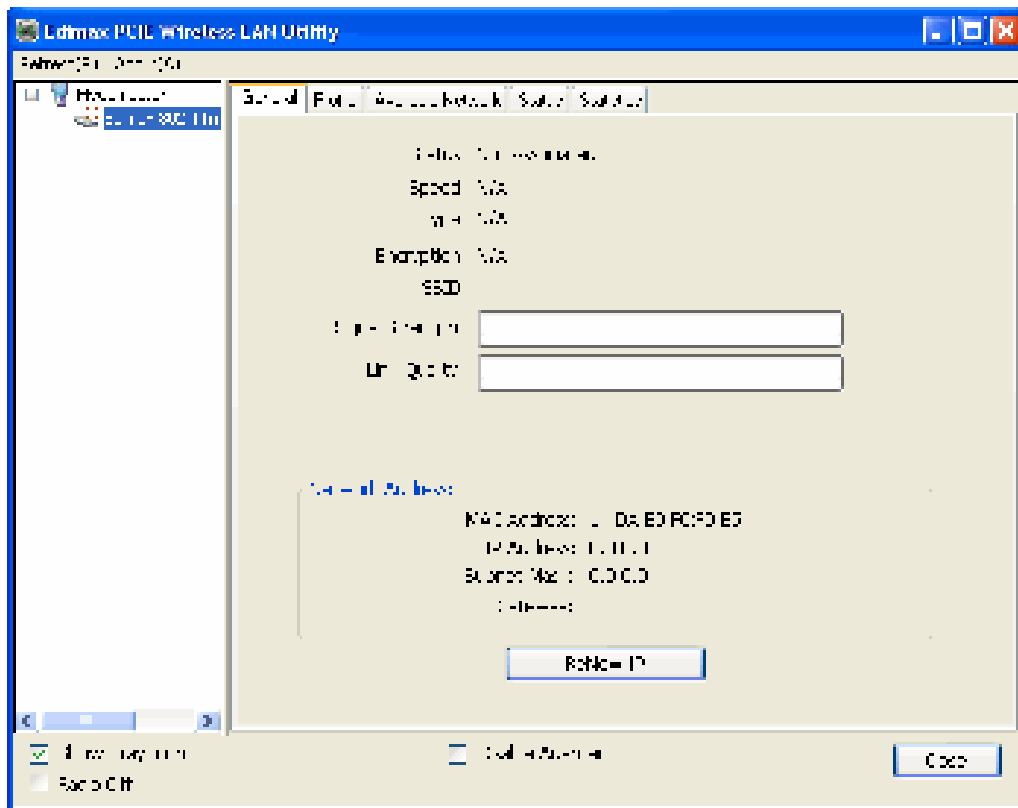
All options in this page will be filled automatically according to the access point you wish to add to profile. However, you can still modify any of them to meet your requirement.

Profile name	You can give a name to this profile, so you can remember its purpose easily. It can be any phrase to help you remember.
Network Name (SSID)	The SSID (Service Set Identifier, i.e. access point's name). This field will be filled as the access point you selected when SSID is not hidden and grayed out. If SSID is hidden, you have to input correct SSID you yourself.
This is a computer-to-computer (ad hoc) network	Check this box if you wish to connect to another computer / network device by ad hoc method. When not accessing to wireless access point, you have to check this box.
Channel	Select wireless channel for ad hoc connection. This option only appears when you're using ad hoc connection.
Network Authentication	Select the network authentication type from drop-down menu. This setting must be identical with the setting of wireless access point you wish to connect.

Data encryption	Select the data encryption type from drop-down menu. This setting must be identical with the setting of wireless access point you wish to connect.
ASCII / PASSPHRASE	When the encryption type is 'WEP', it's required to input a set of 'passphrase' to connect to wireless access point. Check 'ASCII' or 'PASSPHRASE' depends on the security setting of access point, and input it in the box; if you select 'PASSPHRASE' you also need to select the length of the key. The passphrase must be identical with the setting of wireless access point you wish to connect.
Key index	Select WEP key index. For most of access points you can select '1', but please refer to the setting of the access point.
Network key / Confirm network key	When the encryption type is 'WPA' or 'WPA2-PSK', it's required to input a set of 'passphrase' to connect to wireless access point. Please input the same passphrase in two boxes for confirmation.
EAP TYPE / Tunnel / Provision Mode	When authentication type is any of 802.1X, you have to select EAP type, tunnel, and provision mode from dropdown menu. This setting must be identical with your 802.1x authentication server.
Username / Identity / Domain / Password	Please input 802.1x related authentication information here.
Certificate	If certification is required to authenticate with 802.1x authentication server, please select a local certificate from dropdown list.
PAC	Check this box and PAC (Privilege Access Certificate) will be automatically selected.

Please click 'OK' when ready.

5. Network card will attempt to connect to access point now, this may require few seconds to minutes, please be patient. When the 'Status' become 'Associated', your computer is connected to access point you selected. Click 'Close' to close configuration menu.



NOTE: If you connected to an access point but the connection has been dropped soon, please check security settings and re-check password spelling.

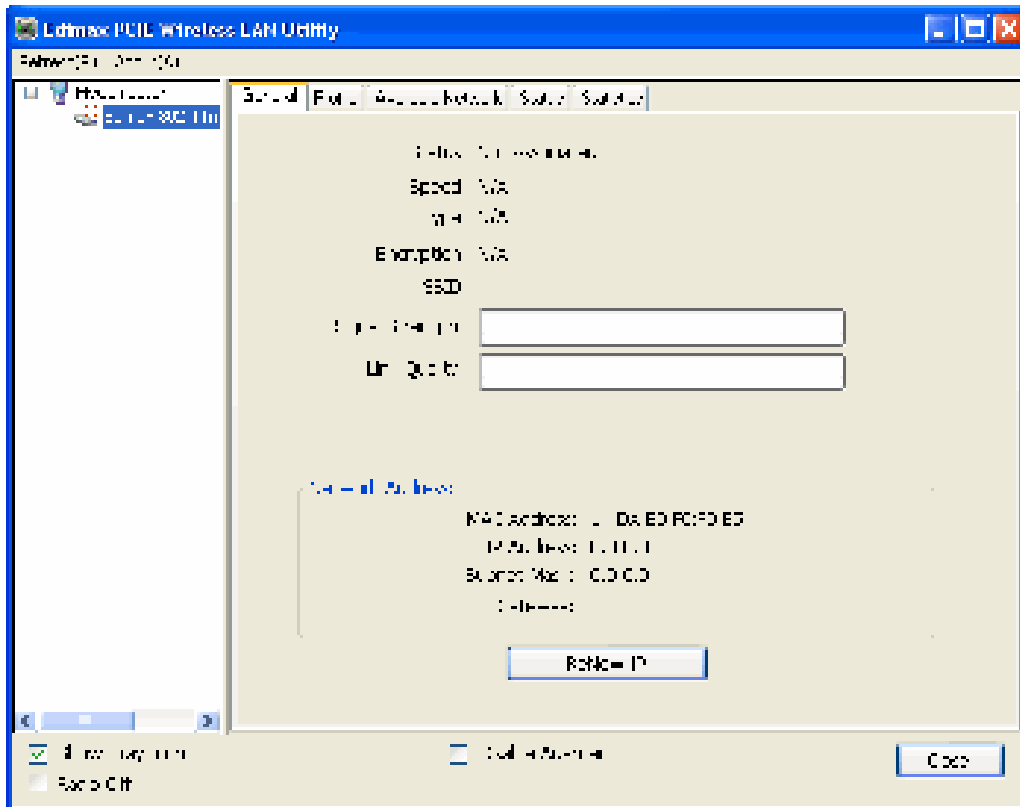
2-2-2 Using Windows Zero Configuration

Windows XP and Vista has a built-in wireless network configuration utility, called as 'Windows Zero Configuration' (WZC). You can also use WZC to configure your wireless network parameter:

1. Right-click Edimax configuration utility icon, and click 'Open Config Utility'.



2. Check 'Windows Zero Config' box.

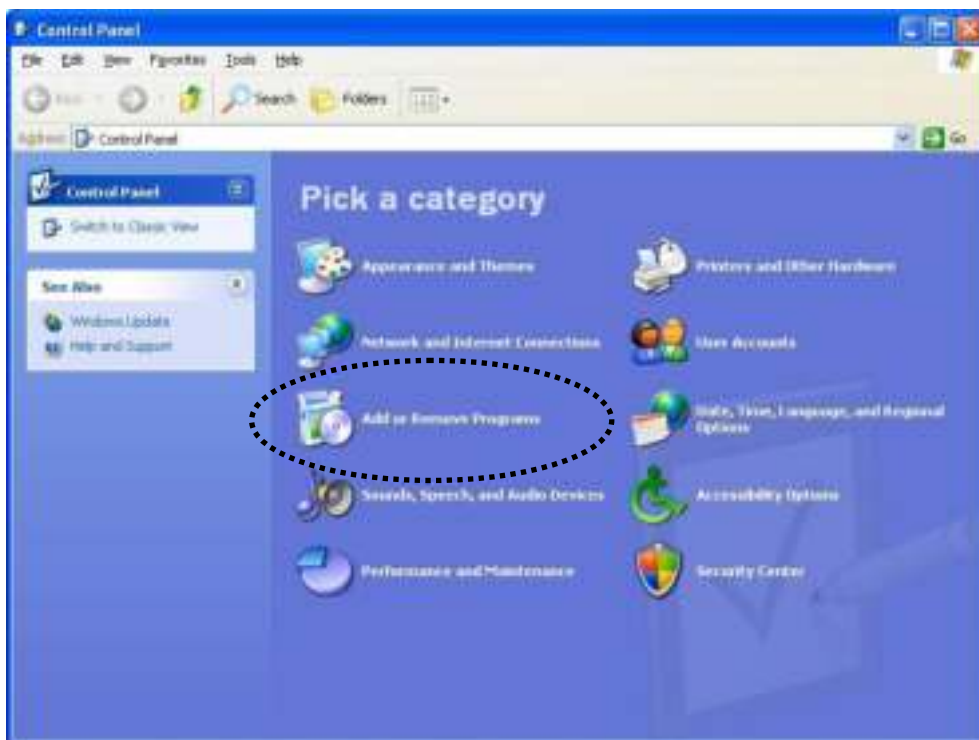


3. A message indicating that you've been switched to Windows Zero Configuration mode will appear. Click 'OK' to continue.

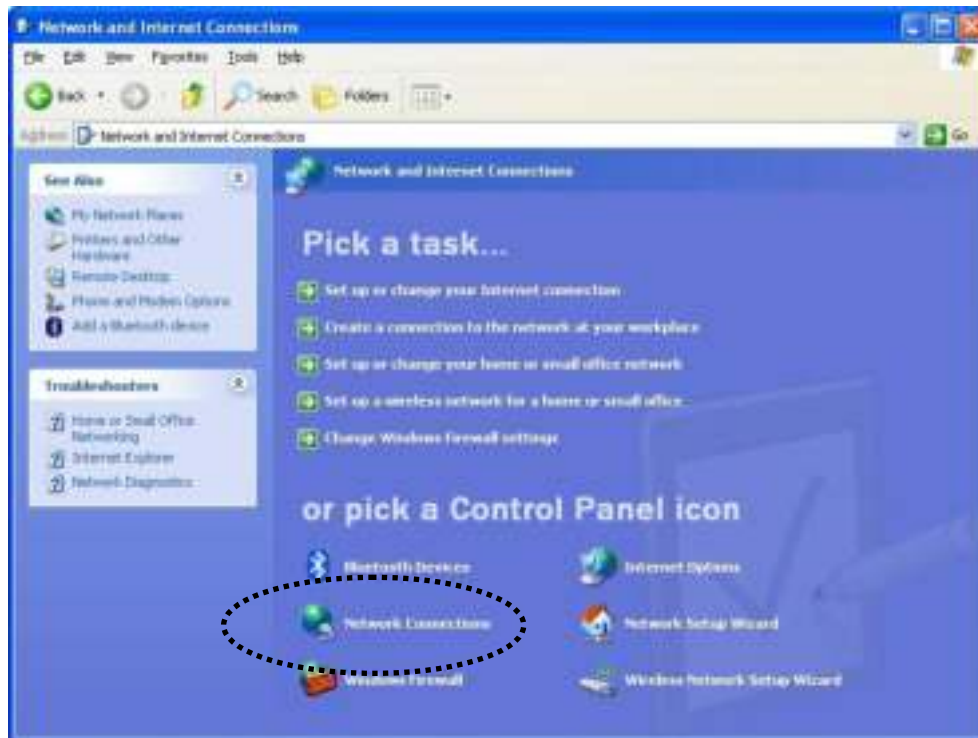


NOTE: To return to use Edimax utility, uncheck 'Windows Zero Config' box.

4. Click 'Start' button (should be located at the bottom-left corner of windows desktop), click 'Control Panel', then click 'Network and Internet Connections' in Control Panel.



5. Double click 'Network Connections'.



6. Right-click 'Wireless Network Connection' (it may have a number as suffix if you have more than one wireless network card, please make sure you right-click the 'Edimax 802.11n Wireless LAN Card'), then select 'View Available Wireless Networks'.



7. All wireless access points in proximity will be displayed here. If the access point you want to use is not displayed here, please try to move your computer closer to the access point, or you can click 'Refresh network list' to rescan access points. Click the access point you want to use if it's shown, then click 'Connect'.

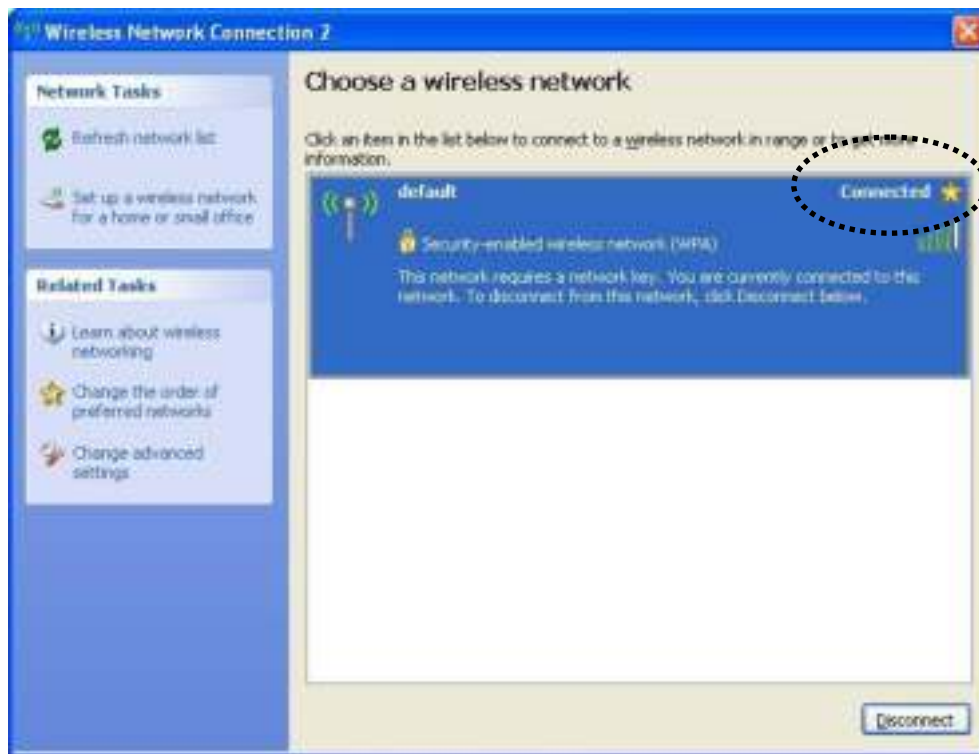


8. If the access point is protected by encryption, you have to input its security key or passphrase here. It must match the encryption setting on the access point.

If the access point you selected does not use encryption, you'll not be prompted for security key or passphrase.



9. If you can see 'Connected' message, the connection between your computer and wireless access point is successfully established.



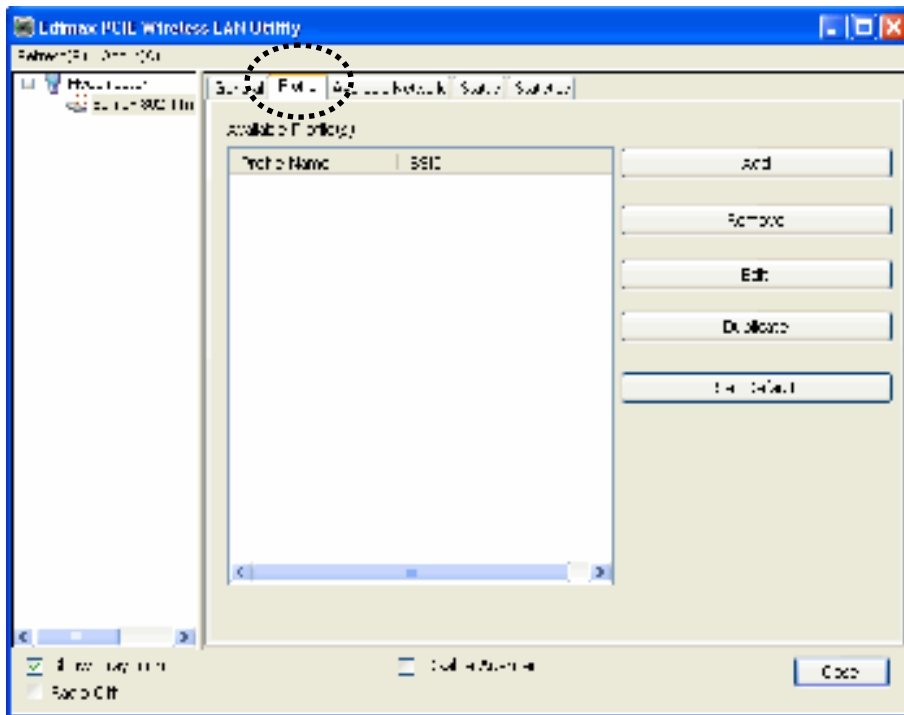
2-3 Connection Profile Management

If you need to connect to different wireless access points at different time, like of access point of your home, office, cybercafe, or public wireless service, you can store the connection parameters (encryption, passphrase, security etc, etc.) as a profile for every access point, so you don't have to input these parameters every time when you want to connect to a specific wireless access point.

To manage profiles, right-click the Edimax configuration utility icon located at lower-right corner of computer desktop, then click 'Open Config Utility'.



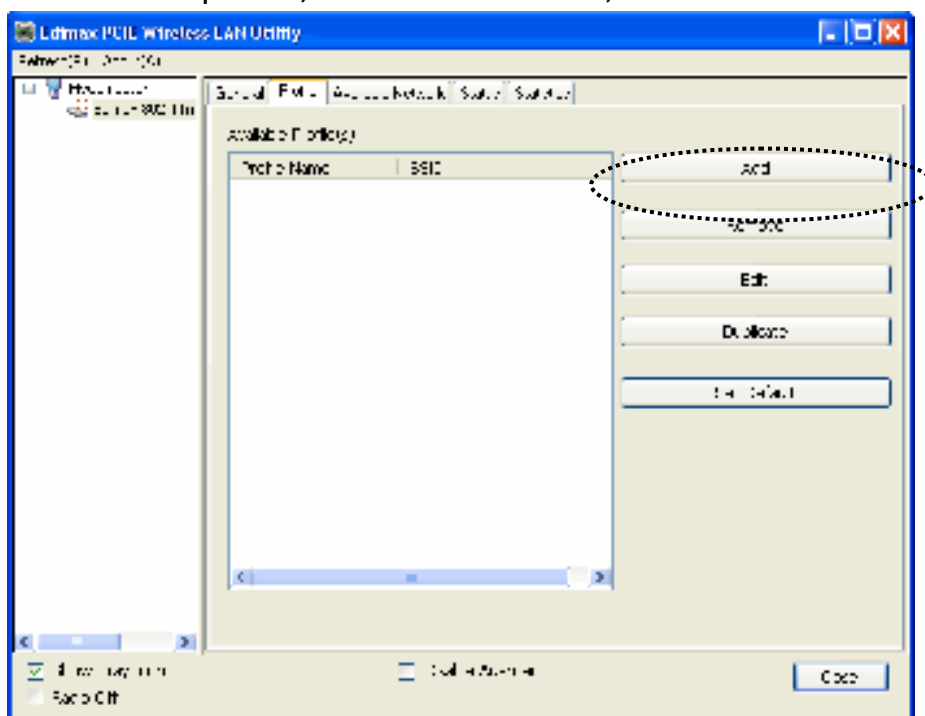
Click the 'Profile' menu.



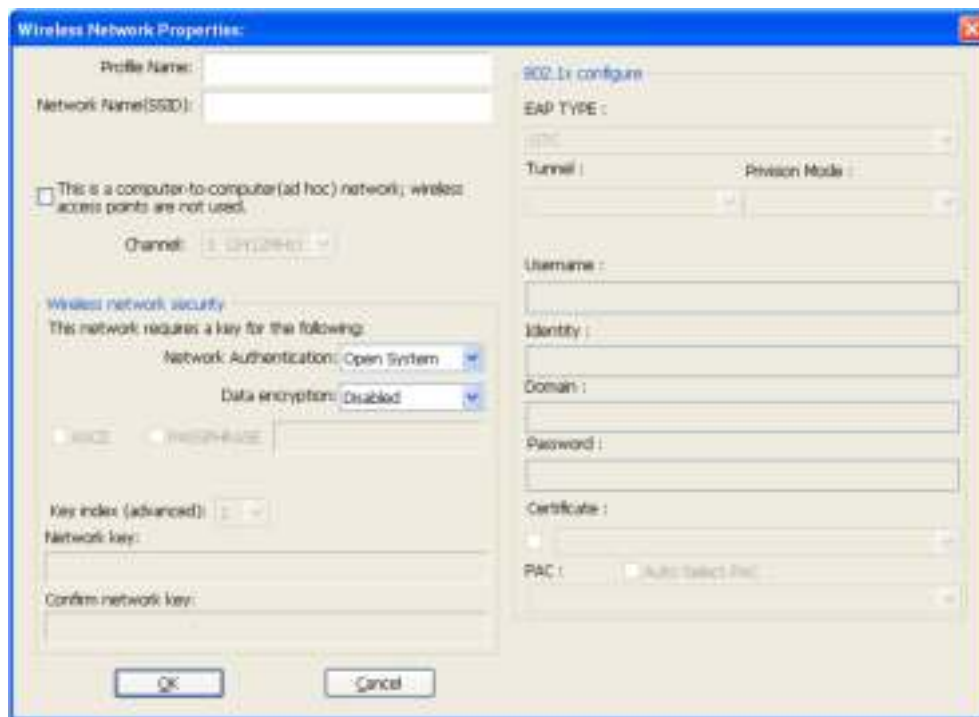
2-3-1 Add a new profile

By this function you can setup the connection parameters for a specific wireless access point in advance, without contacting it first.

If you want to create a new profile, click 'Profile' menu, then click 'Add' button.



You'll be prompted to input connection parameters for the wireless access point you wish to connect:



Required parameters are:

Profile name	You can give a name to this profile, so you can remember its purpose easily. It can be any phrase to help you remember.
Network Name (SSID)	The SSID (Service Set Identifier, i.e. access point's name). This must be identical with the SSID of the access point you wish to connect.
This is a computer-to-computer (ad hoc) network	Check this box if you wish to connect to another computer / network device by ad hoc method. When not accessing to wireless access point, you have to check this box.
Channel	Select wireless channel for ad hoc connection. This option only appears when you're using ad hoc connection.
Network Authentication	Select the network authentication type from drop-down menu. This setting must be identical with the setting of wireless access point you wish to connect.
Data encryption	Select the data encryption type from

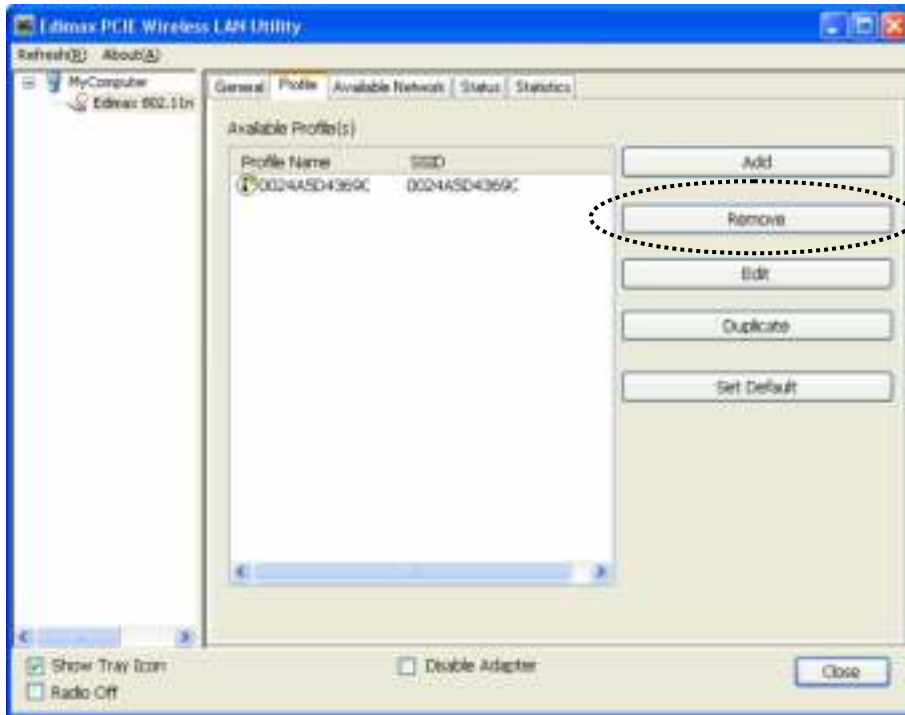
	drop-down menu. This setting must be identical with the setting of wireless access point you wish to connect.
ASCII / PASSPHRASE	When the encryption type is 'WEP', it's required to input a set of 'passphrase' to connect to wireless access point. Check 'ASCII' or 'PASSPHRASE' depends on the security setting of access point, and input it in the box; if you select 'PASSPHRASE' you also need to select the length of the key. The passphrase must be identical with the setting of wireless access point you wish to connect.
Key index	Select WEP key index. For most of access points you can select '1', but please refer to the setting of the access point.
Network key / Confirm network key	When the encryption type is 'WPA' or 'WPA2-PSK', it's required to input a set of 'passphrase' to connect to wireless access point. Please input the same passphrase in two boxes for confirmation.
EAP TYPE / Tunnel / Provision Mode	When authentication type is any of 802.1X, you have to select EAP type, tunnel, and provision mode from dropdown menu. This setting must be identical with your 802.1x authentication server.
Username / Identity / Domain / Password	Please input 802.1x related authentication information here.
Certificate	If certification is required to authenticate with 802.1x authentication server, please select a local certificate from dropdown list.
PAC	Check this box and PAC (Privilege Access Certificate) will be automatically selected.

When all required parameters are set, click 'OK' to create and save a new profile.

2-3-2 Remove an existing profile

When you no longer need an existing profile, you can remove it.

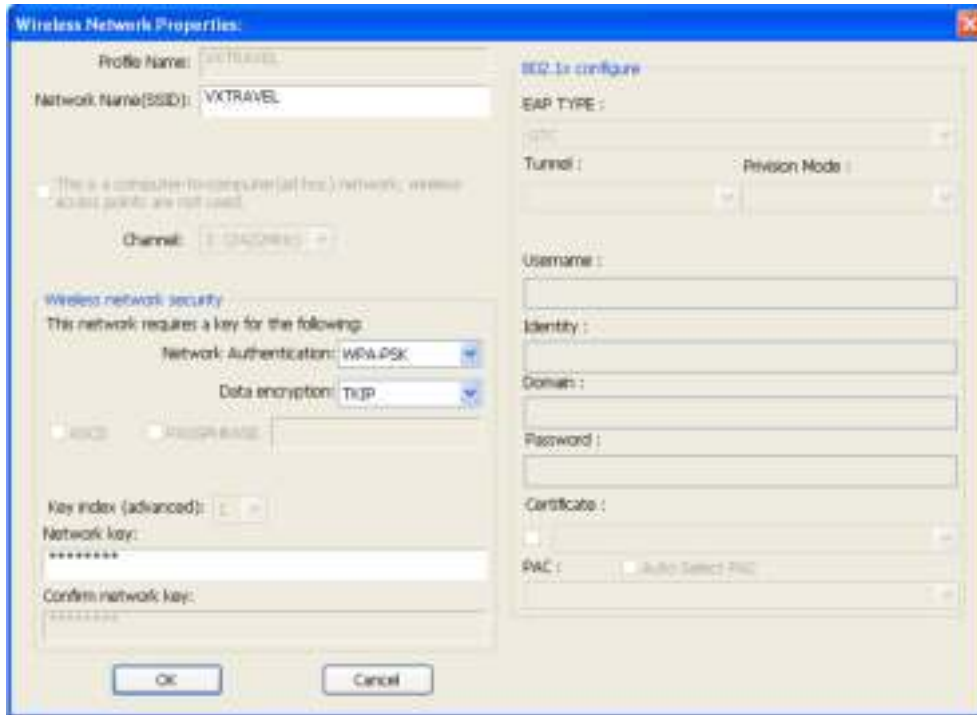
If you want to remove a profile, click 'Profile' menu, then select an existing profile which you wish to remove, and then click 'Remove' button.



2-3-3 Edit an existing profile

If you have added a profile before, and you wish to change the content of the profile, you can use this function. Please select a profile from the list first, then click 'Edit' button.

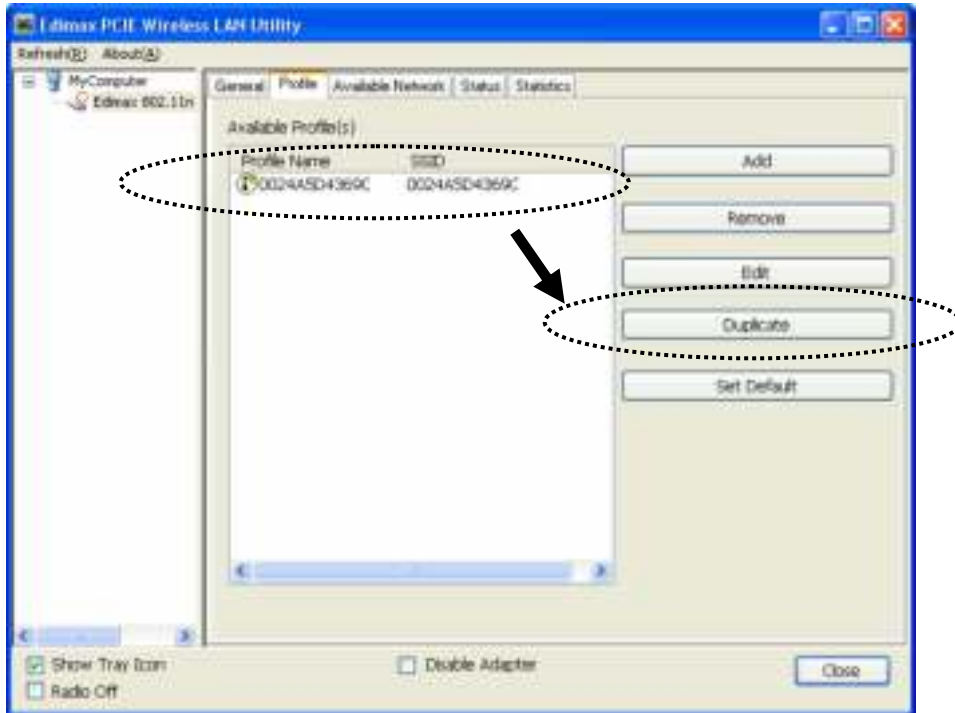
You'll be provided with the contents of selected profile, and you can edit them. Click "OK" to save changes, or click "Cancel" to discard changes.



2-3-4 Make a copy of existing profile

If you need to make a copy of a specific profile, you can use this function. This function is very convenient when you need to build a new profile which parameters are similar to any existing profile.

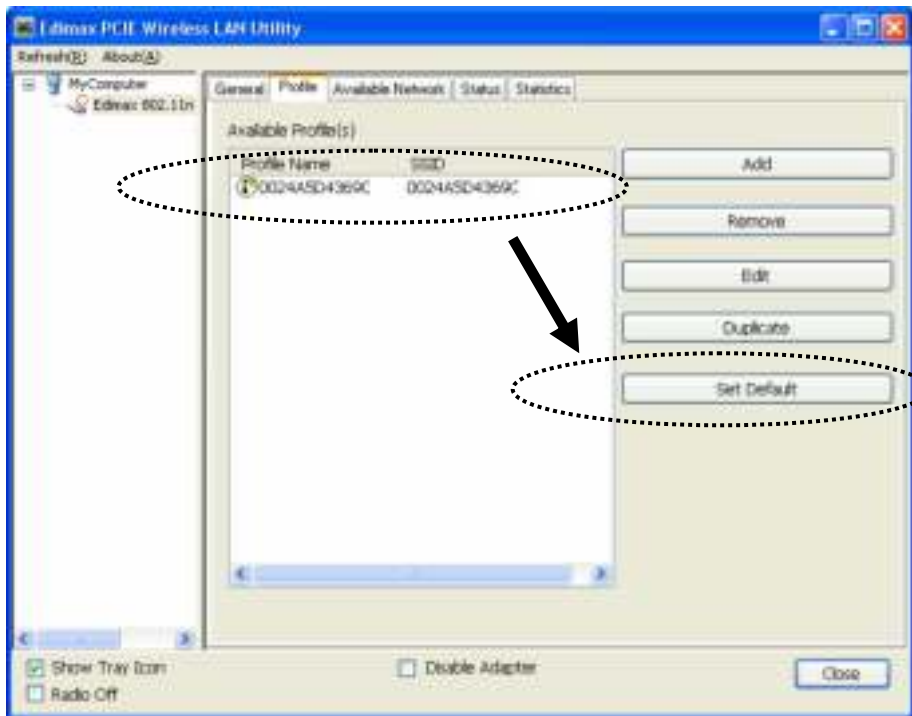
To do this, select an existing profile, then click 'Duplicate' button.



You'll be prompted to input a profile name, please use an identical name that does not exist in profile list.

2-3-5 Set as default profile

If you wish to use a specific profile as default connection, you can select a profile in the list, and click 'Set Default'. Selected profile will become default selection and Edimax configuration utility will attempt to connect to selected access point.

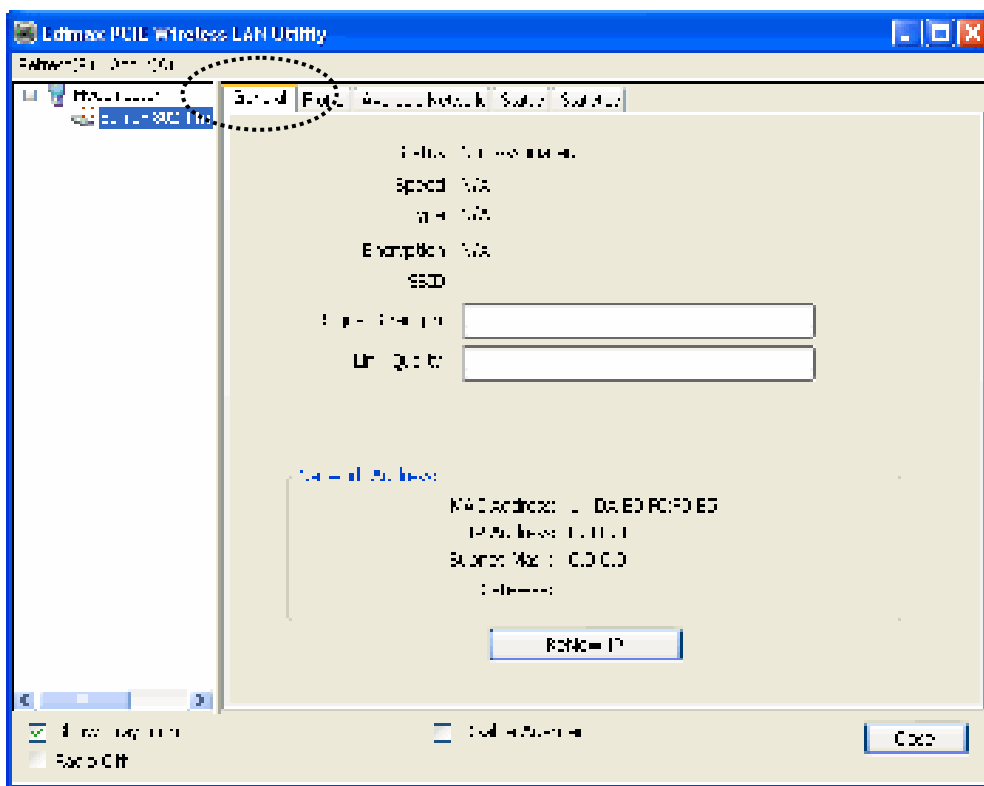


2-4 View Network Statistics, General Information, and Status

The configuration utility provides information about network statistics and link status. If you want to know how your wireless network card works, you can use these functions to get detailed information about the wireless connection you're using.

2-4-1 General Information

If you want to know the general information of the access point you're connecting to, click 'General' menu:

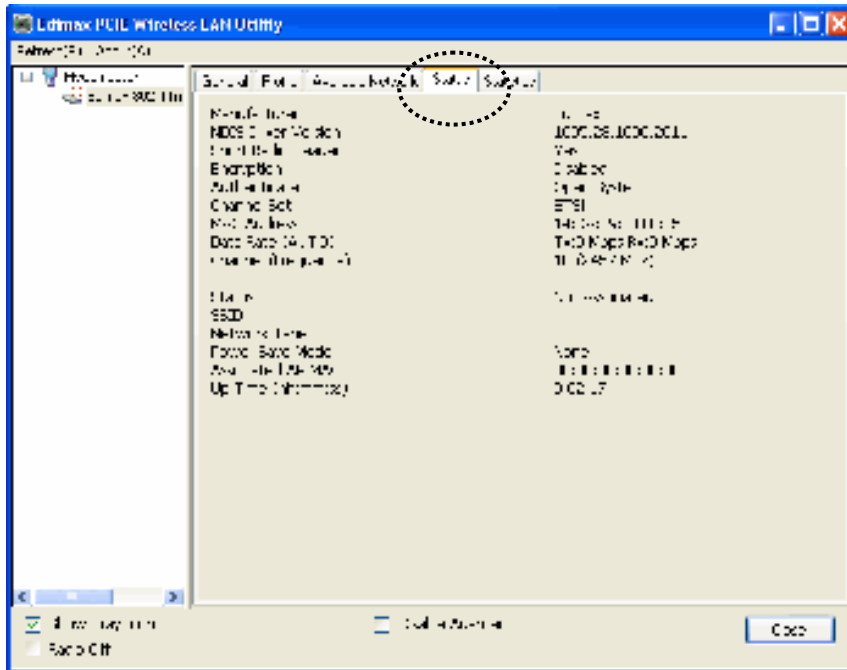


All general information like signal strength and link quality will be displayed here. These information are very useful when you encounter some problem on connecting to access point.

If you wish to get a new IP address from DHCP server, you can click 'ReNew IP' button.

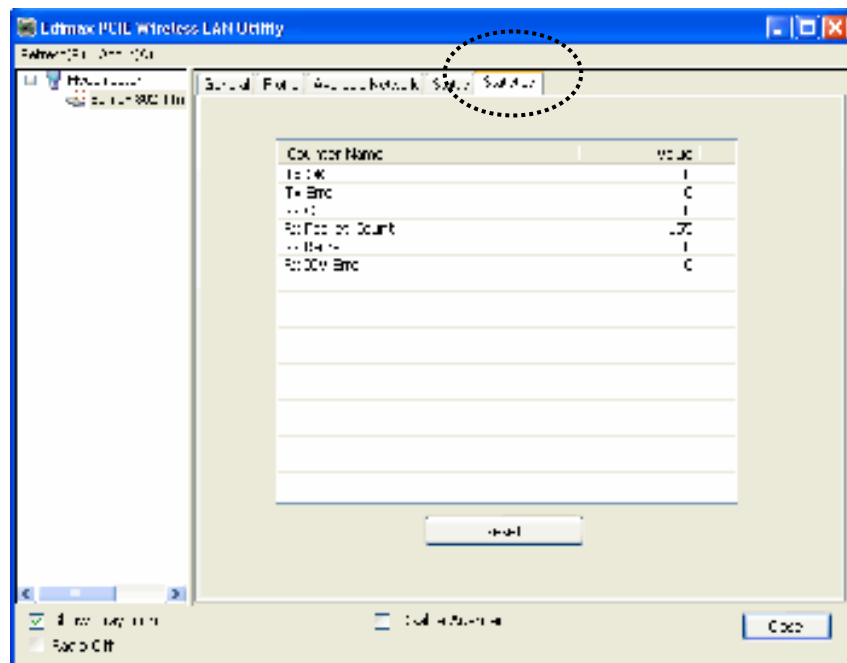
2-4-2 Status

If you want to know the status of your wireless network card, click 'Status' menu:



2-4-3 View Network Statistics

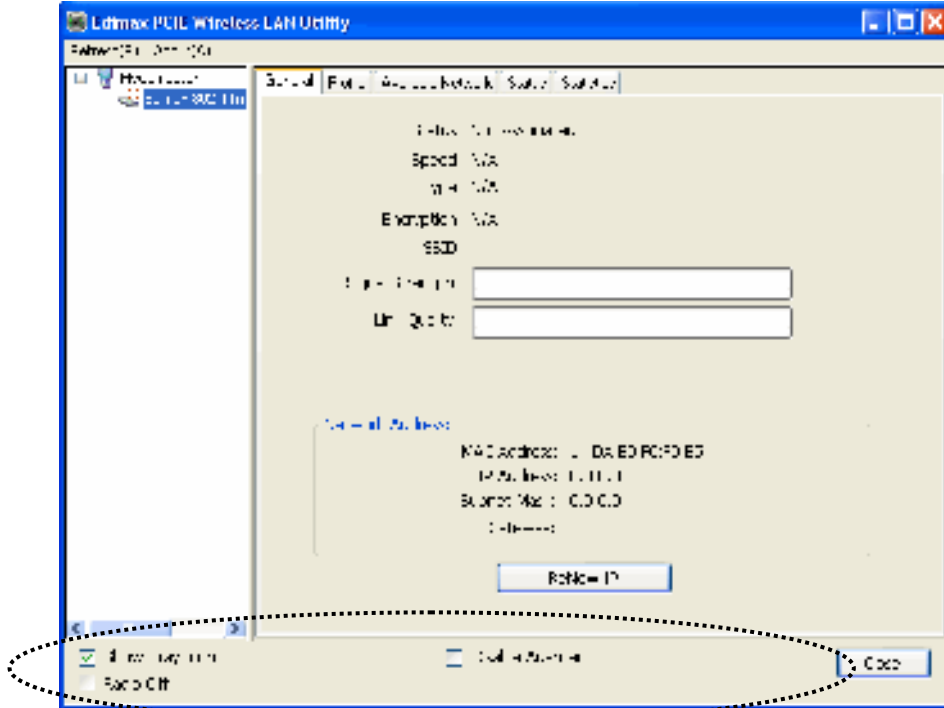
To view the statistical data of wireless network card, click 'Statistics' menu, and the statistics of wireless connection will be displayed:




All connection-related statistics is displayed here. You can click 'Reset' button, to reset the statistics of all items back to 0.

2-5 Miscellaneous Settings

There are few functions provided by Edimax configuration utility, you can access these functions from the bottom of configuration menu:



The descriptions of these function are listed as follow:

Show Tray Icon	<p>Check this box to show an icon on system tray.</p>  <p>Uncheck this box to hide it.</p>
Radio Off	Switch wireless radio off. Wireless network functionalities are disabled.
Disable Adapter	Disable wireless network adapter. All functionalities of configuration menu will disappear. To resume, uncheck 'Disable Adapter'.
Windows Zero Config	Use Windows Zero Configuration to manage wireless connections. See section 2-2-2.

2-6 Establish secure connection with AP by WPS

Wi-Fi Protected Setup (WPS) is the latest wireless network technology which makes wireless network setup become very simple. If you have WPS-enabled wireless access point, and you want to establish a secure connection to it, you don't have to configure the wireless access point and setup data encryption by yourself. All you have to do is to go to the WPS setup page of this wireless card, click a button, and then press a specific button or enter a set of 8-digit code on the wireless access point you wish to establish a secure connection - just three simple steps!

For older wireless access points, it's possible to perform a firmware upgrade to become a WPS-enabled access point. Since they may not have a hardware button to press for WPS setup, you can use an alternative WPS setup method - input the pin code. Every WPS-compatible wireless network card support pin code configuration method; you can just input the code to wireless access point, and the wireless access point and wireless network card will do the rest for you.

This wireless network card is compatible with WPS. To use this function, the wireless access point you wish to connect to must support WPS function too. Now, please follow the following instructions to establish secure connection between WPS-enabled wireless access point and your wireless network card.

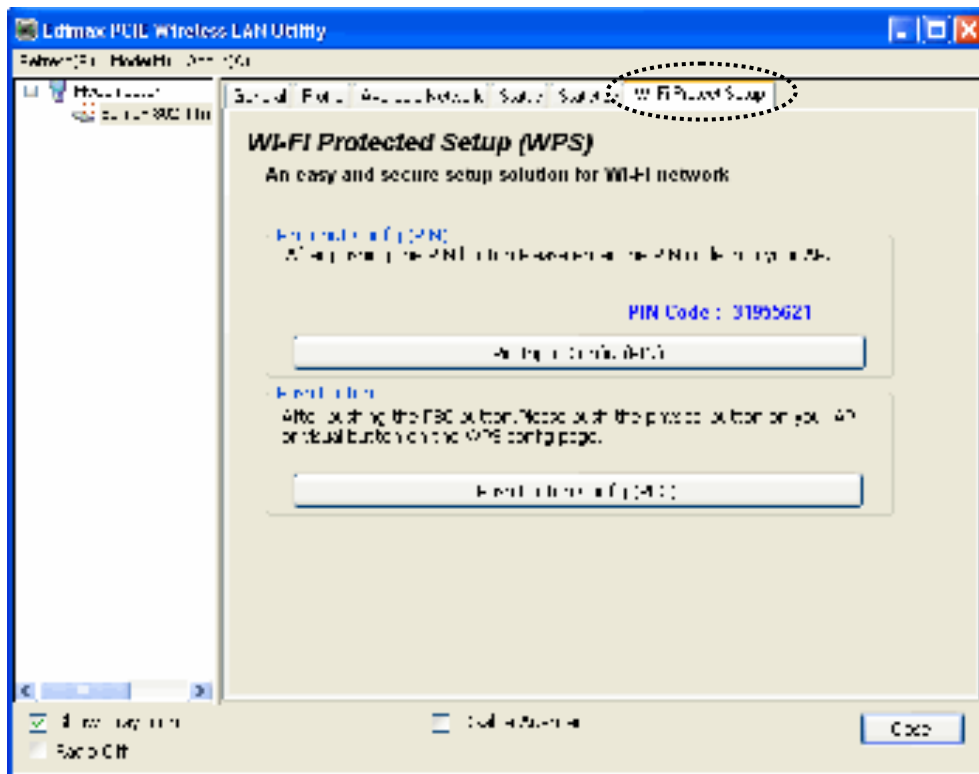
This wireless network card supports 2 kinds of WPS: PIN code and Push-Button.

Please follow the following instructions to setup WPS:

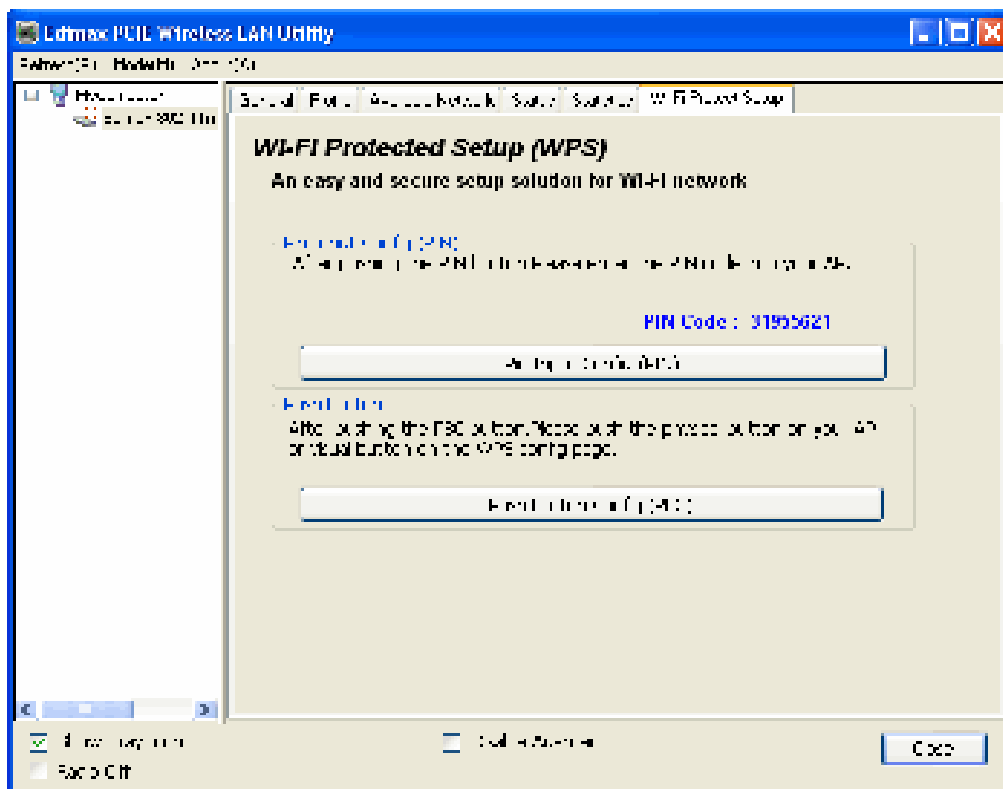
1. Right-click Edimax configuration utility icon, and click 'Open Config Utility'.



2. Click 'Wi-Fi Protect Setup' menu.

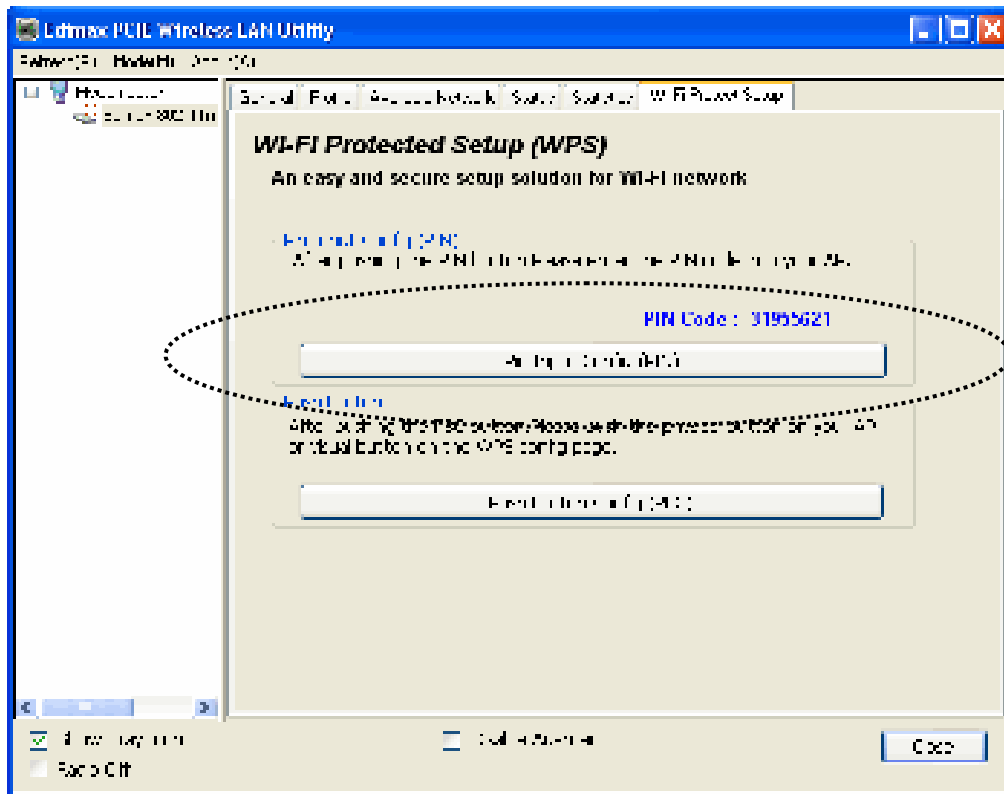


3. You can use PIN code or Push-Button configuration, and WPS-compatible wireless access point must use the same type of WPS. For instructions on setup each type of WPS, see next 2 chapters for detailed instructions.

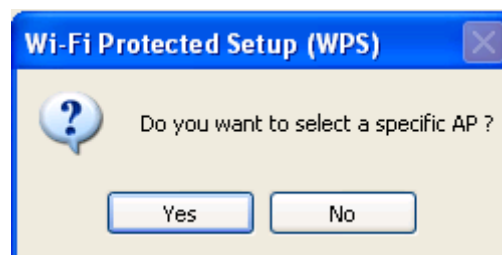


2-6-1 PIN Code

To use PIN Code, please click 'Pin Input Config (PIN)' button:



You'll be prompted to select an access point you wish to connect. If you know its SSID, click 'Yes', otherwise click 'No'.



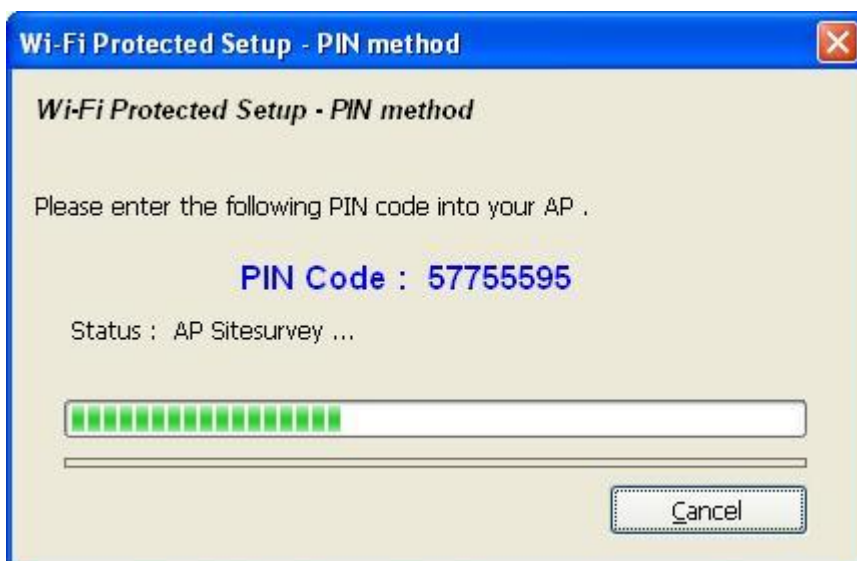
If you select 'Yes', a list of all WPS-compatible AP nearby will be displayed; you can click 'Refresh' to rescan, then select an AP and click 'Select' button.



If you select 'No', wireless network card will prompt you to enter 8-digit PIN code into your AP, without selecting an AP in advance.

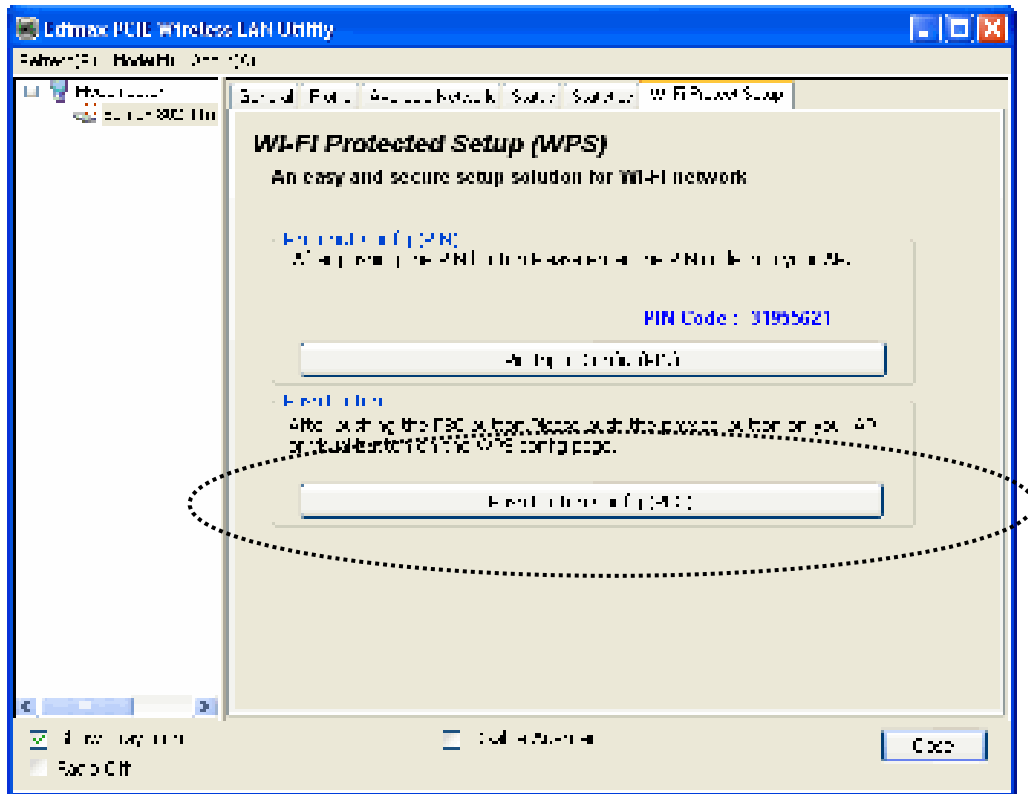
After you select 'Yes' or 'No' in previous step, network card will attempt to connect to WPS-compatible AP, and an 8-digit number will appear. Please input this number to AP's configuration menu within 2 minutes, and network card will establish secure connection with AP automatically.

To stop this procedure before connection is established, click 'Cancel'.

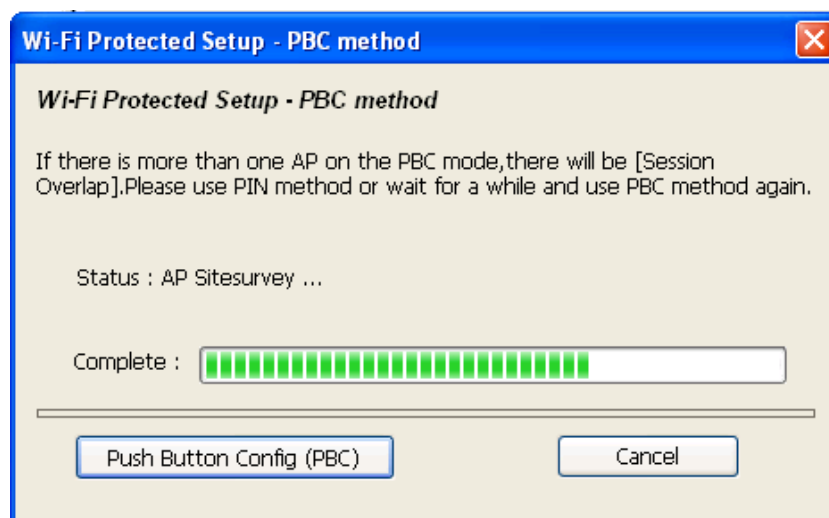


2-6-2 Push Button

To use Push-Button WPS configuration, please click 'Push Button Config (PBC)' button. This is the easiest way to establish secure connection by WPS, but if there're more than one WPS-compatible AP using Push-Button config, please use PIN Code instead.



After you click Push Button Config, a message box will appear:



Please activate Push-Button function on wireless access point now, and wireless network card will establish secure connection with access point within one minute.

CHAPTER III: Soft-AP Function

Excepting become a wireless client of other wireless access points, this wireless card can act as a wireless service provider also! You can switch this wireless card's operating mode to 'AP' mode to simulate the function of a real wireless access point by software, and all other computers and wireless devices can connect to your computer wirelessly, even share the internet connection you have!

Please follow the instructions in following chapters to use the AP function of your wireless card.

3-1 Switch to AP Mode and Station Mode

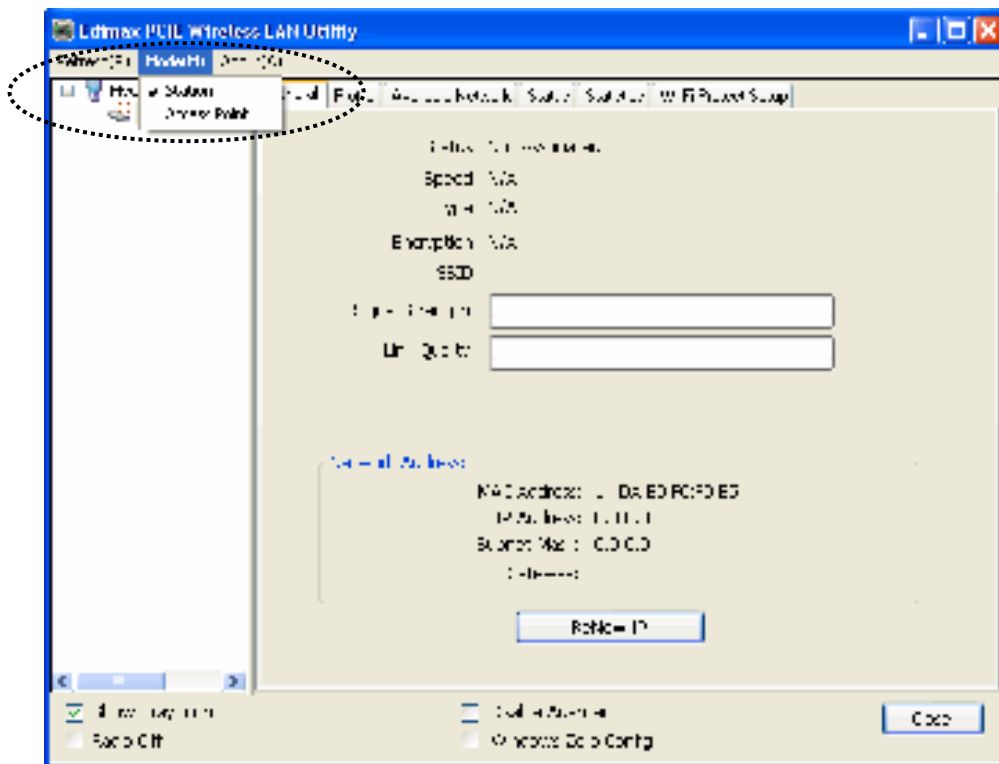
The operating mode of the wireless card is 'Station Mode' (becoming a client of other wireless access points) by default.

Please follow the following instructions to switch to AP mode:

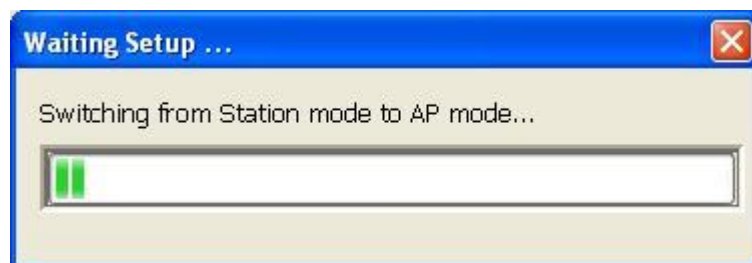
1. Right-click Edimax configuration utility icon, and click 'Open Config Utility'.



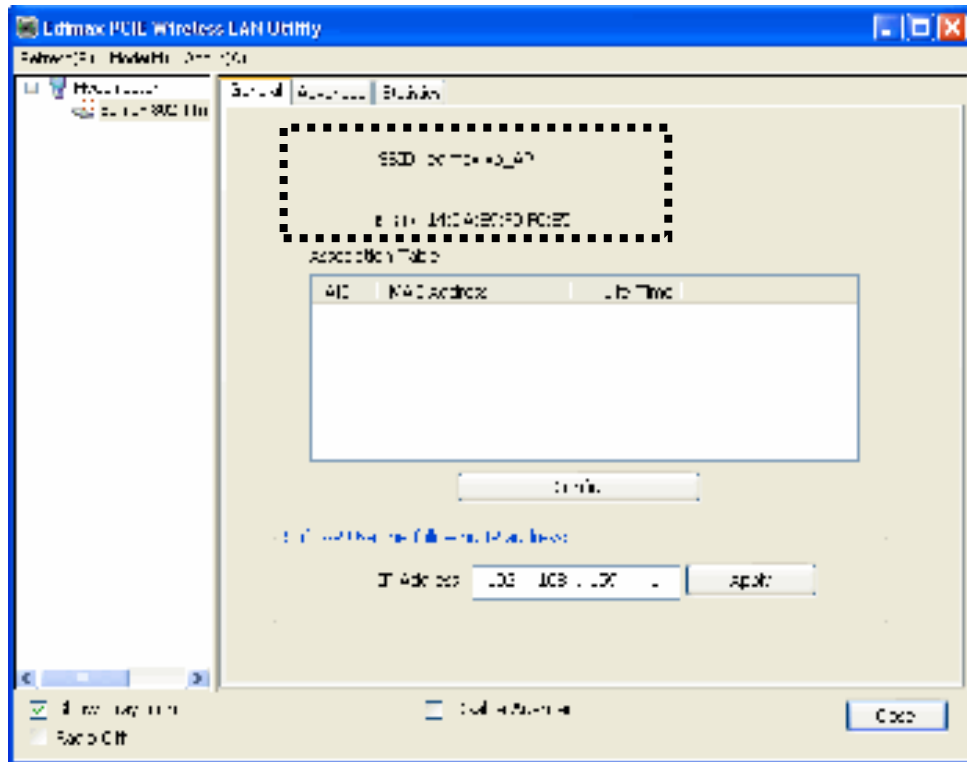
2. Select 'Mode', and then select 'Access Point'.



It requires few seconds to switch to AP mode, please be patient.

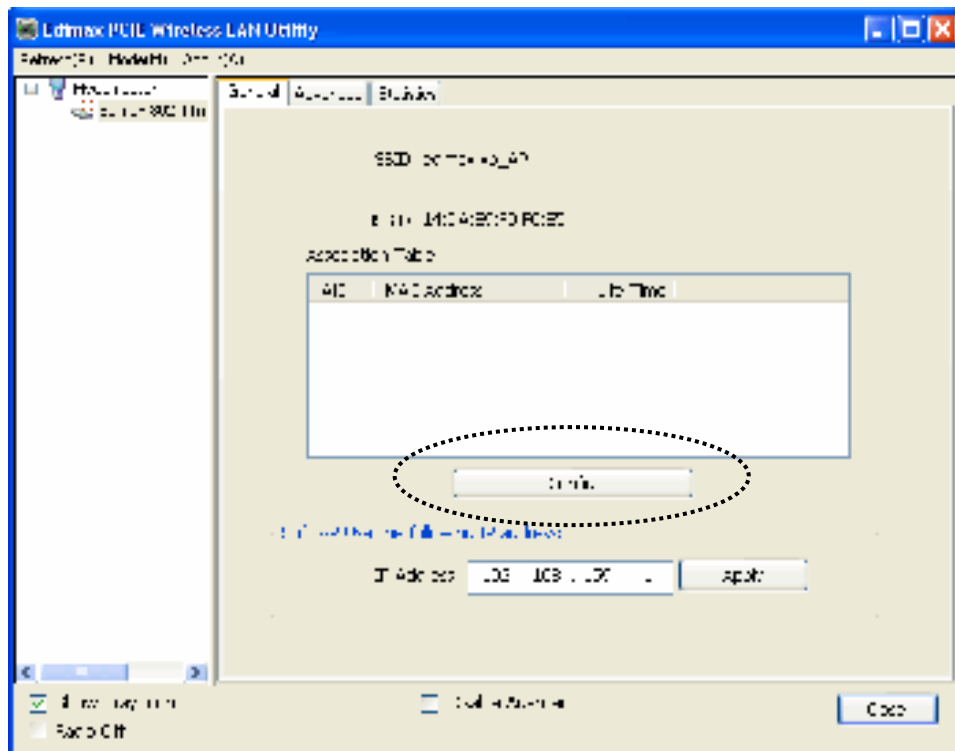


After mode switch is complete, you'll see general information of software AP, which shows AP's SSID and connected wireless clients.



3-1-1 Configure SSID and Channel

To configure software AP, click 'Config' button:



The 'Wireless Network Properties' is displayed.



Please note that Ad-Hoc mode is not available when network card is in AP mode. The description of major setup items are listed below:

Network Name (SSID)	Please input the SSID (the name used to identify this wireless access point) here. Up to 32 numerical characters can be accepted here, excepting space.
Channel	Please select the wireless channel you wish to use, from 1 to 13.

To save changes, click 'OK'; otherwise click 'Cancel' to leave this menu and keep settings untouched.

3-1-2 Setup Soft-AP Security

To setup security options for Soft-AP, configure ‘Wireless Network Security’ section as follow:



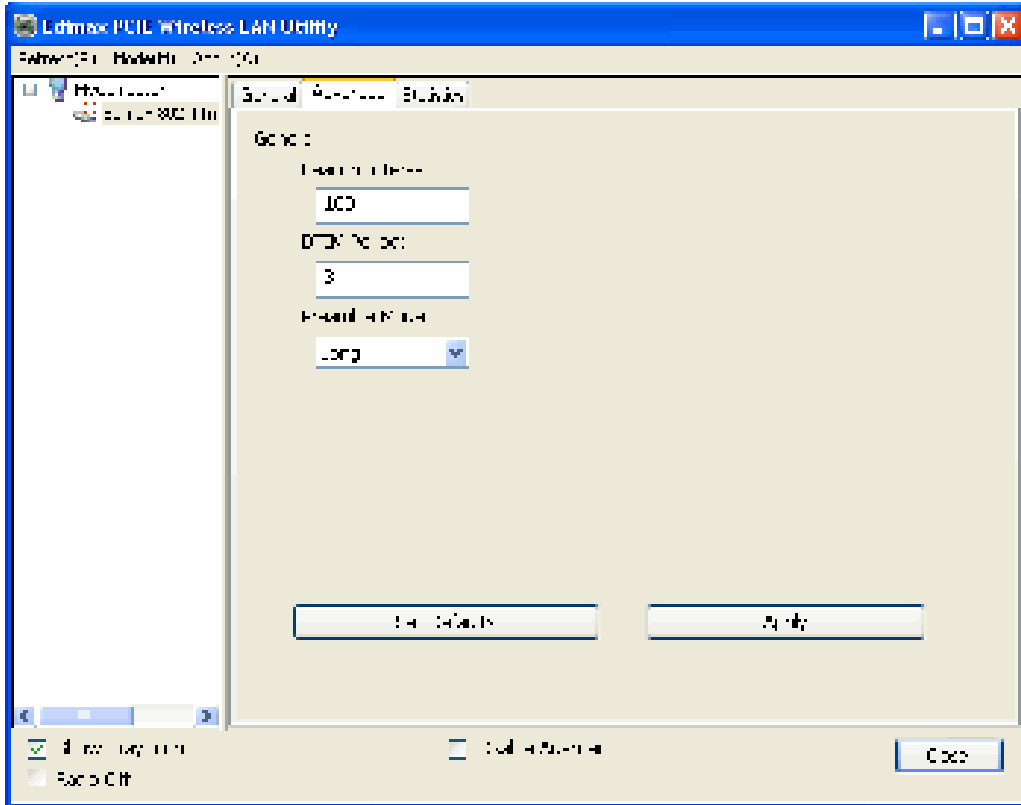
The description of setup items about wireless security are listed below:

Network Authentication	Select network authentication mode from dropdown menu.
Data Encryption	Select data encryption method from dropdown menu.
ASCII / PASSPHRASE	If the encryption method is WEP, check either ‘ASCII’ or ‘PASSPHRASE’ box and input it in the box as WEP passphrase.
Key Index	Select WEP key index (1-4). If you don’t know which one you should use, select 1.
Network key / Confirm network key	IF network authentication mode is WPA, please input WPA passphrase in both box.

To save changes, click ‘OK’; otherwise click ‘Cancel’ to leave this menu and keep settings untouched.

3-2 Advanced Settings

If you want to setup advanced settings of software access point, select 'Advanced' menu. If you don't know the meaning and affects of these settings, keep them untouched.



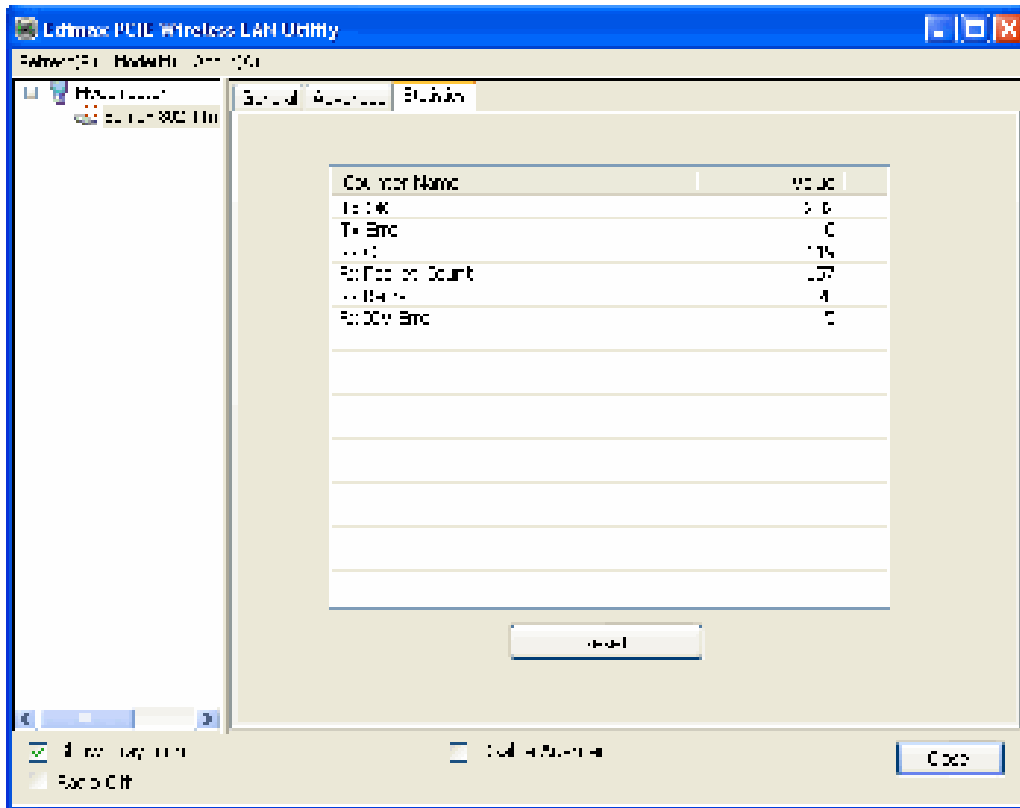
The description of all setup items are listed below:

Beacon Interval	Please input wireless beacon time interval here.
DTIM Period	Please input DTIM (Delivery Traffic Indication Message) here.
Preamble Mode	Select wireless frame preamble mode (long or short) from dropdown menu.
Set Defaults	Reset all settings back to factory default value.
Apply	Save changes.

If you changed any setting here and cause problem on communicating with wireless clients, click 'Set Defaults' to reset all settings back to default setting.

3-3 Wireless Statistics

Select 'Statistics' menu and the data statistics about software access point will be displayed.



Click 'Reset' to reset the value of every item back to '0'.

CHAPTER IV: Appendix

4-1 Hardware Specification

Standards: IEEE 802.11b/g/n

Interface: PCI Express interface

Frequency Band: 2.4000 ~ 2.4835GHz (Industrial Scientific Medical Band)

Data Rate: 11b: 1/2/5.5/11Mbps

11g: 6/9/12/24/36/48/54Mbps

11n (20MHz): MCS0-7 (Up to 144Mbps)

11n (40MHz): MCS0-7 (Up to 300Mbps)

Securities: WEP 64/128, WPA, WPA2 and IEEE 802.1x

Antenna: 3dBi detachable antenna (2T2R)

Drivers: Windows XP/Vista/Windows 7

LED: Link, Tx/Rx

Transmit Power: 11b: 16±1.5dBm , 11g: 12±1.5dBm, 11n: 12±1.5dBm

Dimension: 22(H) x 121(W) x 88(D) mm (without Antenna)

Temperature: 32~104°F (0 ~ 40°C)

Humidity: 10-95% (Non-Condensing)

Certification: FCC, CE

4-2 Troubleshooting

If you encounter any problem when you're using this wireless network card, don't panic! Before you call your dealer of purchase for help, please check this troubleshooting table, the solution of your problem could be very simple, and you can solve the problem by yourself!

Scenario	Solution
I can't find any wireless access point / wireless device in 'Site Survey' function.	<ol style="list-style-type: none"> 1. Click 'Rescan' for few more times and see if you can find any wireless access point or wireless device. 2. Please move closer to any known wireless access point. 3. 'Ad hoc' function must be enabled for the wireless device you wish to establish a direct wireless link. 4. Please adjust the position of network card (you may have to move your computer if you're using a notebook computer) and click 'Rescan' button for few more times. If you can find the wireless access point or wireless device you want to connect by doing this, try to move closer to the place where the wireless access point or wireless device is located.
Nothing happens when I click 'Open Config Utility'	<ol style="list-style-type: none"> 1. Please make sure the wireless network card is inserted into your computer's PCI express slot. 2. Reboot the computer and try again. 3. Remove the card and insert it into another PCI express slot. 4. Remove the driver and re-install. 5. Contact the dealer of purchase for help.
I can not establish connection with a certain wireless access point	<ol style="list-style-type: none"> 1. Click 'Add to Profile' for few more times. 2. If the SSID of access point you wish to connect is hidden (nothing displayed in 'SSID' field in 'Site Survey' function), you

	<p>have to input correct SSID of the access point you wish to connect. Please contact the owner of access point to ask for correct SSID.</p> <ol style="list-style-type: none"> 3. You have to input correct passphrase / security key to connect an access point with encryption. Please contact the owner of access point to ask for correct passphrase / security key. 4. The access point you wish to connect only allows network cards with specific MAC address to establish connection. Please go to 'Status' menu and write the value of 'MAC Address' down, then present this value to the owner of access point so he / she can add the MAC address of your network card to his / her access point's list.
<p>The network is slow / having problem when transferring large files</p>	<ol style="list-style-type: none"> 1. Move closer to the place where access point is located. 2. There could be too much people using the same radio channel. Ask the owner of the access point to change the channel number. <p>Please try one or more solutions listed above.</p>

4-3 Glossary

1. What is the IEEE 802.11g standard?

802.11g is the new IEEE standard for high-speed wireless LAN communications that provides for up to 54 Mbps data rate in the 2.4 GHz band. 802.11g is quickly becoming the next mainstream wireless LAN technology for the home, office and public networks.

802.11g defines the use of the same OFDM modulation technique specified in IEEE 802.11a for the 5 GHz frequency band and applies it in the same 2.4 GHz frequency band as IEEE 802.11b. The 802.11g standard requires backward compatibility with 802.11b.

The standard specifically calls for:

- A. A new physical layer for the 802.11 Medium Access Control (MAC) in the 2.4 GHz frequency band, known as the extended rate PHY (ERP). The ERP adds OFDM as a mandatory new coding scheme for 6, 12 and 24 Mbps (mandatory speeds), and 18, 36, 48 and 54 Mbps (optional speeds). The ERP includes the modulation schemes found in 802.11b including CCK for 11 and 5.5 Mbps and Barker code modulation for 2 and 1 Mbps.
- B. A protection mechanism called RTS/CTS that governs how 802.11g devices and 802.11b devices interoperate.

2. What is the IEEE 802.11b standard?

The IEEE 802.11b Wireless LAN standard subcommittee, which formulates the standard for the industry. The objective is to enable wireless LAN hardware from different manufactures to communicate.

3. What does IEEE 802.11 feature support?

The product supports the following IEEE 802.11 functions:

- CSMA/CA plus Acknowledge Protocol
- Multi-Channel Roaming
- Automatic Rate Selection
- RTS/CTS Feature
- Fragmentation
- Power Management

4. What is Ad-hoc?

An Ad-hoc integrated wireless LAN is a group of computers, each has a Wireless LAN card, Connected as an independent wireless LAN. Ad hoc wireless LAN is applicable at a departmental scale for a branch or SOHO operation.

5. What is Infrastructure?

An integrated wireless and wireless and wired LAN is called an Infrastructure configuration. Infrastructure is applicable to enterprise scale for wireless access to central database, or wireless application for mobile workers.

6. What is BSS ID?

A specific Ad hoc LAN is called a Basic Service Set (BSS). Computers in a BSS must be configured with the same BSS ID.

7. What is WEP?

WEP is Wired Equivalent Privacy, a data privacy mechanism based on a 40 bit shared key algorithm, as described in the IEEE 802 .11 standard.

8. What is TKIP?

TKIP is a quick-fix method to quickly overcome the inherent weaknesses in WEP security, especially the reuse of encryption keys. TKIP is involved in the IEEE 802.11i WLAN security standard, and the specification might be officially released by early 2003.

9. What is AES?

AES (Advanced Encryption Standard), a chip-based security, has been developed to ensure the highest degree of security and authenticity for digital information, wherever and however communicated or stored, while making more efficient use of hardware and/or software than previous encryption standards. It is also included in IEEE 802.11i standard. Compare with AES, TKIP is a temporary protocol for replacing WEP security until manufacturers implement AES at the hardware level.

10. Can Wireless products support printer sharing?

Wireless products perform the same function as LAN products. Therefore, Wireless products can work with Netware, Windows 2000, or other LAN operating systems to support printer or file sharing.

11. Would the information be intercepted while transmitting on air?

WLAN features two-fold protection in security. On the hardware side, as with Direct Sequence Spread Spectrum technology, it has the inherent security feature of scrambling. On the software side, WLAN series offer the encryption function (WEP) to enhance security and Access Control. Users can set it up depending upon their needs.

12. What is DSSS? What is FHSS? And what are their differences?

Frequency-hopping spread-spectrum (FHSS) uses a narrowband carrier that changes frequency in a pattern that is known to both transmitter and receiver. Properly synchronized, the net effect is to maintain a single logical channel. To an unintended receiver, FHSS appears to be short-duration impulse noise. Direct-sequence spread-spectrum (DSSS) generates a redundant bit pattern for each bit to be transmitted. This bit pattern is called a chip (or chipping code). The longer the chip is, the greater the probability that the original data can be recovered. Even if one or more bits in the chip are damaged during transmission, statistical techniques embedded in the radio can recover the original data without-the need for retransmission. To an unintended receiver, DSSS appears as low power wideband noise and is rejected (ignored) by most narrowband receivers.

13. What is Spread Spectrum?

Spread Spectrum technology is a wideband radio frequency technique developed by the military for use in reliable, secure, mission-critical communication systems. It is designed to trade off bandwidth efficiency for reliability, integrity, and security. In other words, more bandwidth is consumed than in the case of narrowband transmission, but the trade off produces a signal that is, in effect, louder and thus easier to detect, provided that the receiver knows the parameters of the spread-spectrum signal being broadcast. If a receiver is not tuned to the right frequency, a spread –spectrum signal looks like background noise. There are two main alternatives, Direct Sequence Spread Spectrum (DSSS) and Frequency Hopping Spread Spectrum (FHSS).

14. What is WPS?

WPS stands for Wi-Fi Protected Setup. It provides a simple way to establish unencrypted or encrypted connections between wireless clients and access point automatically. User can press a software or hardware button to activate WPS function, and WPS-compatible wireless clients and access point will establish connection by themselves. There are two types of WPS: PBC (Push-Button Configuration) and PIN code.



Edimax Technology Co., Ltd
6F., No.3, Wu-Chuan 3rd Road, Wu-Gu,
New Taipei City, Taiwan

Edimax Technology Europe B.V.
Nijverheidsweg 25 5683 CJ Best
The Netherlands

Edimax Computer Company
3350 Scott Blvd., Bldg.15 Santa Clara,
CA 95054, USA