



# e 825 S

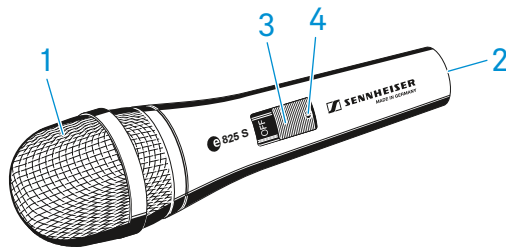
Instruction manual



## Delivery includes

- e 825 S
- MZQ 800 microphone clamp
- pouch
- quick guide
- safety guide

## Product overview



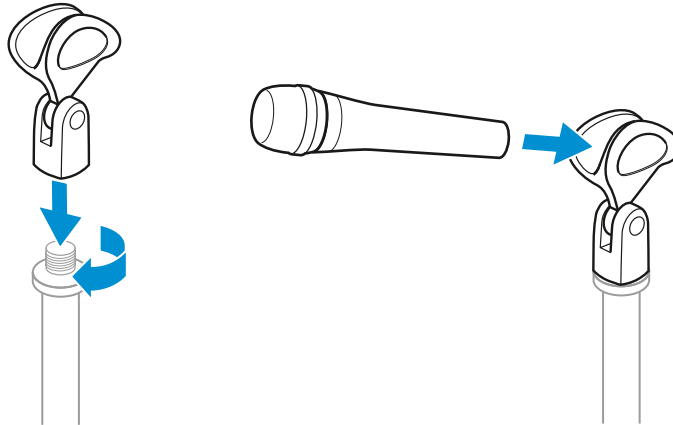
1. Sound inlet basket
2. XLR-3 connector
3. On/off switch
4. Screw



## Installation

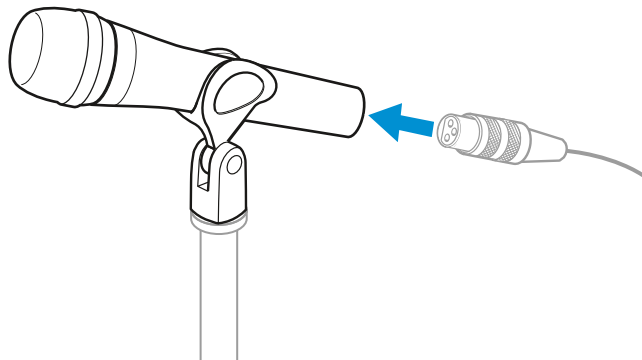
### Attaching the microphone

- ▷ Screw the microphone clamp to a stand.
- ▷ Place the microphone with its back end into the microphone clamp.
- ▷ Orient the microphone together with the microphone clamp.



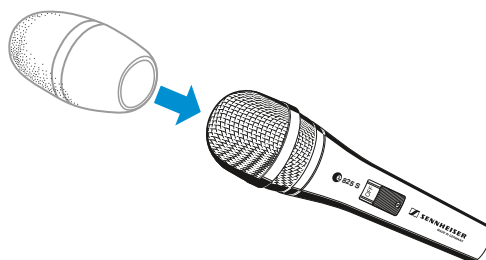
### Connecting the microphone

- ▷ Connect the XLR-3 socket of the microphone cable (optional accessories) to the XLR-3 socket of the microphone.



### Using the windshield

- ▷ Place the MZW 4032 (optional accessories) windshield over the microphone head.



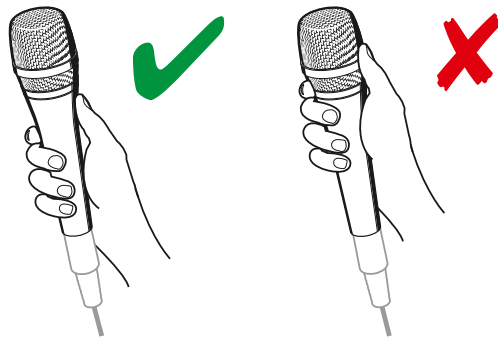


## Operation

### Holding the microphone

If you cover the microphone head during transmission, this will change the pick-up pattern of the microphone and consequently the sound.

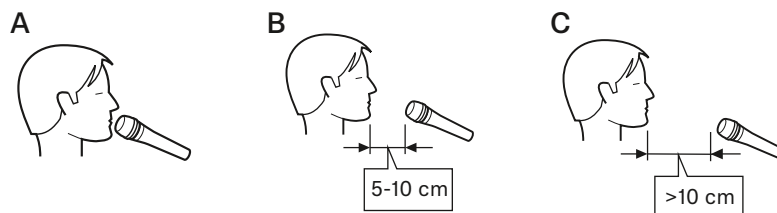
- ▷ Only hold the microphone by its body.



### Positioning the microphone

- ▷ It is vital to observe the following notes:

Position	Resulting sound	Commentary
A	High proximity effect (large bass boost) Powerful, direct sound	Very little crosstalk from other sound sources
B	Less proximity effect (less bass boost) Some room ambience, natural, balanced sound	More crosstalk from other sound sources
C	Very little proximity effect (minimal bass boost) More room ambience, indirect sound	Higher crosstalk from other sound sources



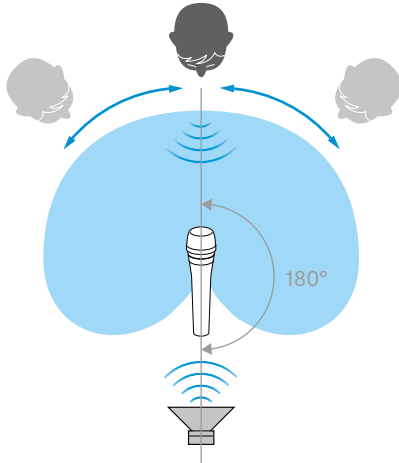
If sibilance occurs:

- ▷ Position the microphone slightly to the side and not directly in front of the mouth.



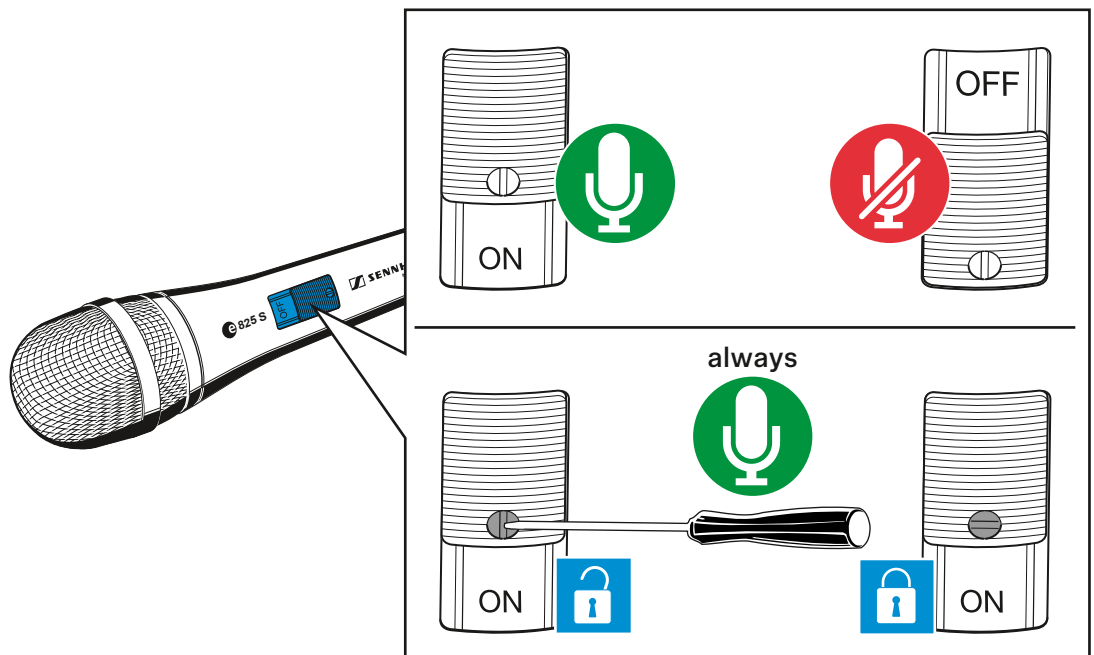
### Positioning the monitor loudspeakers

- ▷ To prevent feedback and crosstalk, position your monitor loudspeakers in the angle area of the highest cancellation of the microphone (approx. 180°).



### Switching the e 825 S on/off

- ▷ Use the on/off switch to switch the the e 825 S on or off.
- ▷ If necessary, use the screw to lock the on/off switch in the „on“ position.





## Cleaning and maintaining the e 825 S

### CAUTION

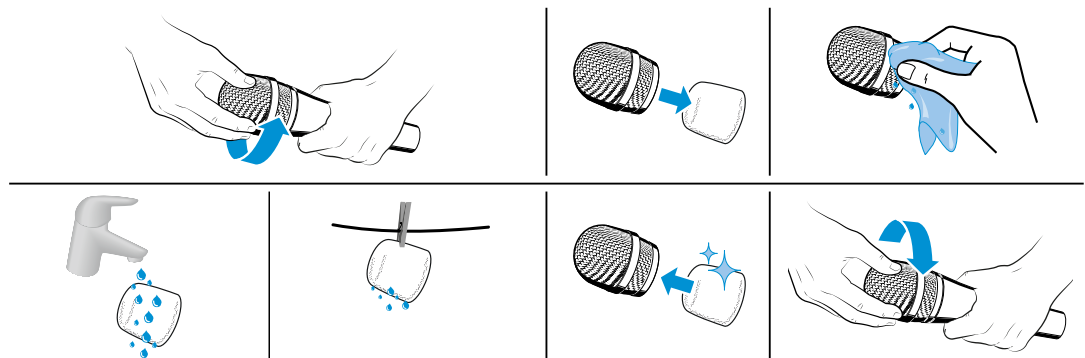
#### LIQUIDS CAN DAMAGE THE ELECTRONICS OF THE PRODUCT!

Liquids entering the housing of the product can cause a short-circuit and damage the electronics.

- ▷ Keep all liquids away from the product.
  - ▷ Do not use any solvents or cleansing agents.
- 
- ▷ Disconnect the products from the power supply system and remove rechargeable batteries and batteries before you begin cleaning.
  - ▷ Clean all products only with a soft, dry cloth.

### Cleaning the sound inlet basket of the microphone module

- ▷ Unscrew the sound inlet basket.
- ▷ Remove the foam insert from the sound inlet basket.
- ▷ Use a slightly damp cloth to clean the sound inlet basket from the inside and outside.
- ▷ If necessary, clean the foam insert with a mild detergent or replace the foam insert.
- ▷ Dry the foam insert.
- ▷ Reinsert the foam insert.
- ▷ Replace the sound inlet basket on the microphone head and screw it tight.

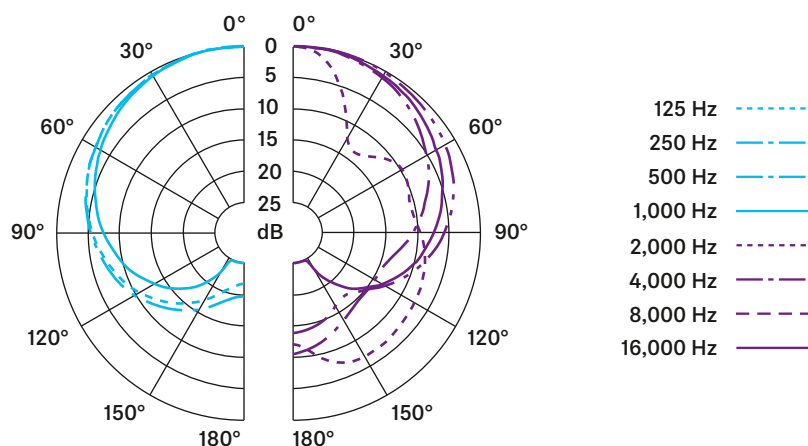




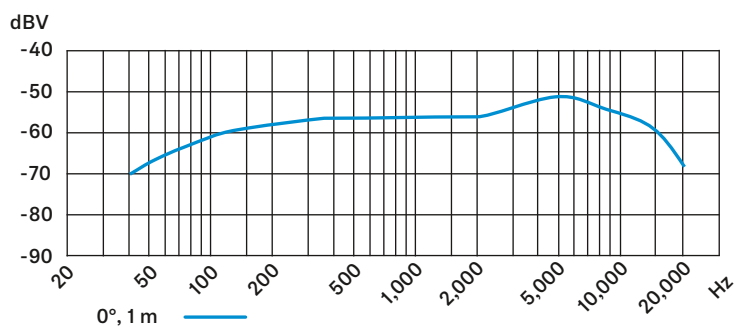
## Specifications

Transducer principle	dynamic
Frequency response	80 - 15,000 Hz
Pick-up pattern	cardioid
Sensitivity (free field, no load)	1,5 mV/Pa
Nominal impedance (at 1 kHz)	350 Ω
Min. terminating impedance	1 kΩ
Connector	XLR-3
Temperature range	0 °C to +40 °C
Dimensions	∅ 48 x 180 mm
Weight	330 g

### Polar pattern

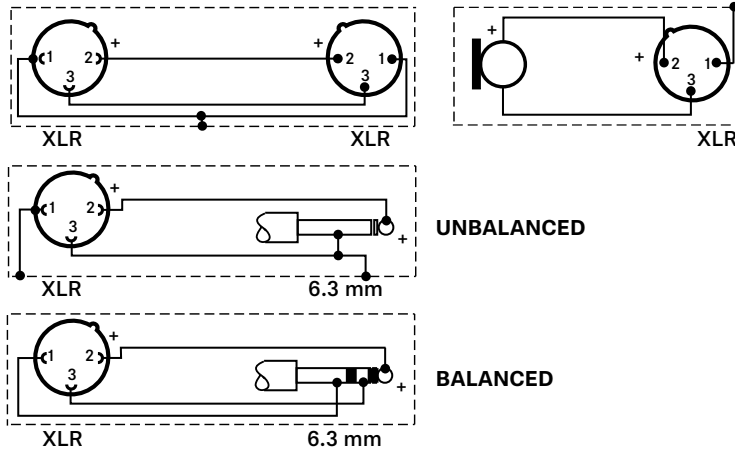


### Frequency response





Connector assignment



Overview of applications

- Primary application
- Secondary application

e 602 II			•			•		•	•							•
e 604			•									•	•	•	•	•
e 608					•								•	•		•
e 609 silver													•	•	•	•
e 614			•	•		•	•								•	•
e 835	•	•														•
e 845	•	•														•
e 865	•	•														•
e 901															•	•
e 902								•	•					•		•
e 904					•								•	•	•	•
e 906													•	•	•	•
e 908													•	•	•	•
e 914														•	•	•
e 935	•															•
e 945	•															•
e 965	•	•														•