



## Set up with videos:

Scan QR code or visit

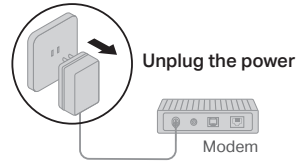
<https://www.tp-link.com/support/setup-video/#wi-fi-routers>



# 1 Connect the Hardware

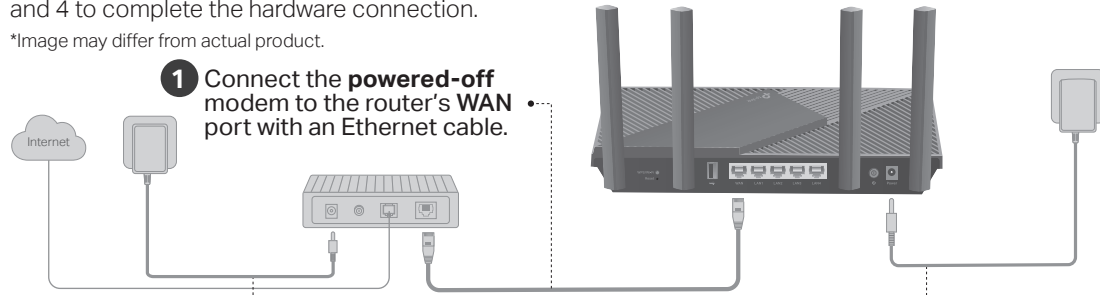


- **Unplug the power** to turn off your modem, if any, and remove the backup battery if it has one.
- Place the router horizontally and orient the antennas vertically.



If your internet connection is through an Ethernet cable directly from the wall instead of through a DSL / Cable / Satellite modem, connect the Ethernet cable to the router's WAN port, and then follow steps 3 and 4 to complete the hardware connection.

\*Image may differ from actual product.



- 1** Connect the **powered-off** modem to the router's WAN port with an Ethernet cable.
- 2** Power on the modem, and then wait about **2 minutes** for it to restart.
- 3** Connect the power adapter to the router and turn on the router.
- 4** Verify that the hardware connection is correct by checking the following LEDs.

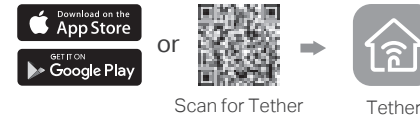


Note: If the 2.4GHz LED and 5GHz LED are off, press and hold the WPS/Wi-Fi button on the back for more than 2 seconds. Both the LEDs should turn solid on.

# 2 Set Up the Network

## Method ONE: Via TP-Link Tether App

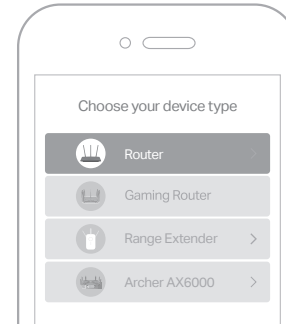
- 1. Download the Tether app.**



- 2. Open the Tether app and log in with your TP-Link ID.**

Note: If you don't have an account, create one first.

- 3. Tap the + button in the Tether app and select Router > Wireless Router. Follow the steps to complete the setup and connect to the internet.**



😊 Enjoy the internet !

## Method TWO: Via a Web Browser

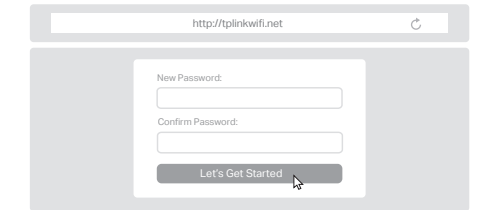
- 1. Connect your device to the router wirelessly or with an Ethernet cable.**

The default wireless network names (SSIDs) and password are printed on the label at the bottom of the router.



- 2. Launch a web browser, and enter <http://tplinkwifi.net> or <http://192.168.0.1> in the address bar. Create a password to log in.**

Note: If the login window does not appear, please refer to Q1 of **Need Help?** in this guide.



- 3. Follow the step-by-step instructions to set up the internet connection and register for the TP-Link Cloud service.**

😊 Enjoy the internet !

## Button Explanation

### WPS/Wi-Fi Button

Press the button for 1 second, and immediately press the WPS button on your client to start the WPS process.

Press and hold the button for more than 2 seconds to turn on or off the wireless function of your router.

### Reset Button

Press and hold the button for about 6 seconds until the Power LED blinks to reset the router to its factory default settings.

## USB Applications

With the USB port, it's easy to share files and media with multiple devices. Visit <https://www.tp-link.com/app/usb> to learn more about the USB applications.

#### • Local Storage Sharing

Share files from the USB drive with devices on your home network

#### • Media Server

Play media from the USB drive on your computer and smart devices

#### • Remote Access

Access the USB drive when you are away from home



To communicate with TP-Link users or engineers, visit <https://community.tp-link.com> to join TP-Link Community.



For technical support, the user guide and more information, please visit <https://www.tp-link.com/support>



Email [techwriter@tp-link.com.cn](mailto:techwriter@tp-link.com.cn) to give suggestions.

- Keep the device away from water, fire, humidity or hot environments.
- Do not attempt to disassemble, repair, or modify the device. If you need service, please contact us.
- Do not use any other chargers than those recommended.
- Do not use damaged charger or USB cable to charge the device.
- Do not use the device where wireless devices are not allowed.
- Adapter shall be installed near the equipment and shall be easily accessible.

©2021 TP-Link 7106509198 REV2.0.0

## Need Help?



### Q1. What should I do if I can't access the web management page?

- Reboot your router and try again.
- If the computer is set to a static IP, change its settings to obtain an IP address automatically.
- Verify that <http://tplinkwifi.net> is correctly entered in the web browser. Alternatively, enter <http://192.168.0.1> or <http://192.168.1.1> in the web browser.
- Use another web browser and try again.
- Disable and enable the network adapter in use.

### Q2. What should I do if I can't access the internet?

- Power off your modem for about 5 minutes, then power it on and check the internet. If your modem has more than one Ethernet port, keep other ports unconnected.
- Check if the internet is working normally by connecting a computer directly to the modem via an Ethernet cable. If it is not, contact your internet service provider.
- Log in to the web management page, and go to the **Network Map** page to check whether the internet IP address is valid or not. If it's valid, go to **Advanced > Network > Internet**, click **Advanced Settings**, select **Use the Following DNS Addresses**, set the primary DNS to 8.8.8.8, and set the secondary DNS to 8.8.4.4. If it is not, check the hardware connection or contact your internet service provider.
- For cable modem users, connect a computer directly to the router using an Ethernet cable, log in to the router's web management page and go to **Advanced > Network > Internet > MAC Clone**. Select **Clone Current Device MAC** and click **SAVE**. Then reboot both the modem and the router.

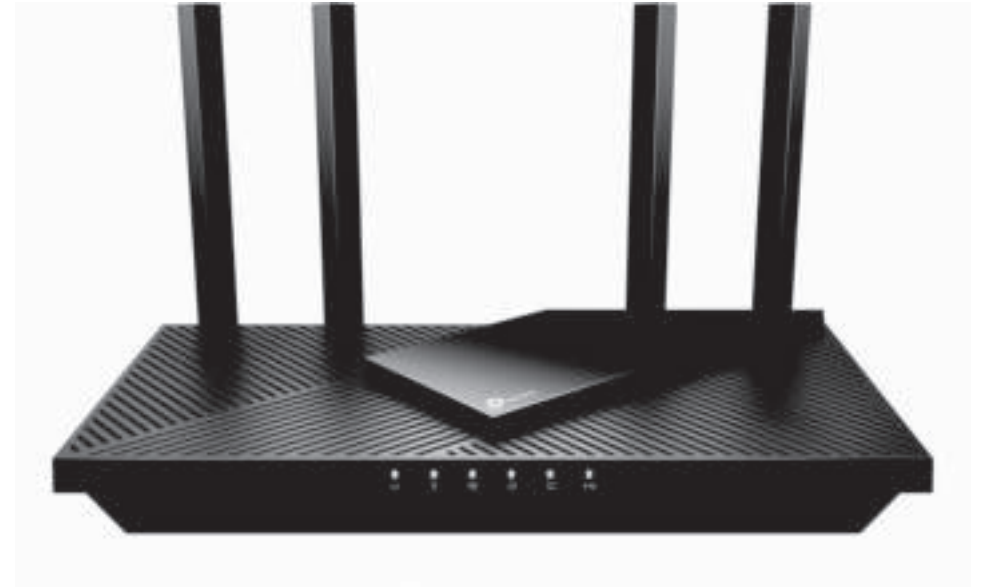
### Q3. What should I do if I forget my wireless password?

- If you have not changed the default wireless password, it can be found on the label at the bottom of the router.
- Connect a computer directly to the router using an Ethernet cable. Log in to the router's web management page at <http://tplinkwifi.net>, and go to the **Wireless** page to retrieve or reset your wireless password.

### Q4. What should I do if I forget my web management page password?

- If you are using a TP-Link ID to log in, click **Forgot password** on the login page and then follow the instructions to reset it.
- Alternatively, press and hold the **Reset** button on the back for about 6 seconds until the Power LED blinks. Then visit <http://tplinkwifi.net> to create a new login password.

# Quick Installation Guide



Wi-Fi 6 Router

