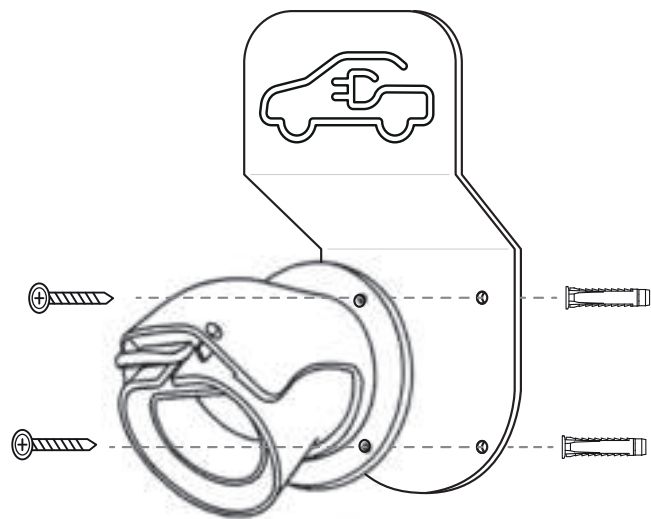


# Cable Holder + Socket

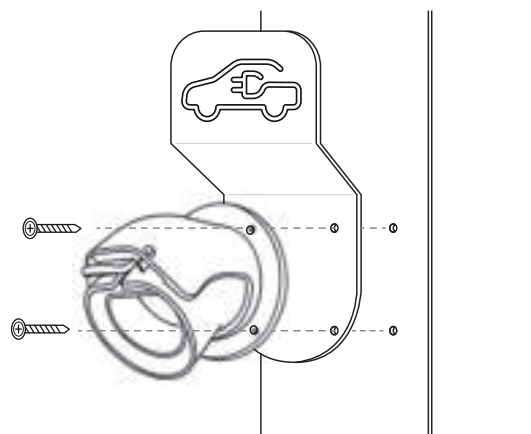
## Installation on a wall:

1. Position and level the mounting template (see back)
2. Mark the mounting holes with a center pin
3. Drill the holes with a drill Ø6 & insert plugs
4. Mount the socket & cable holder with the 4 screws

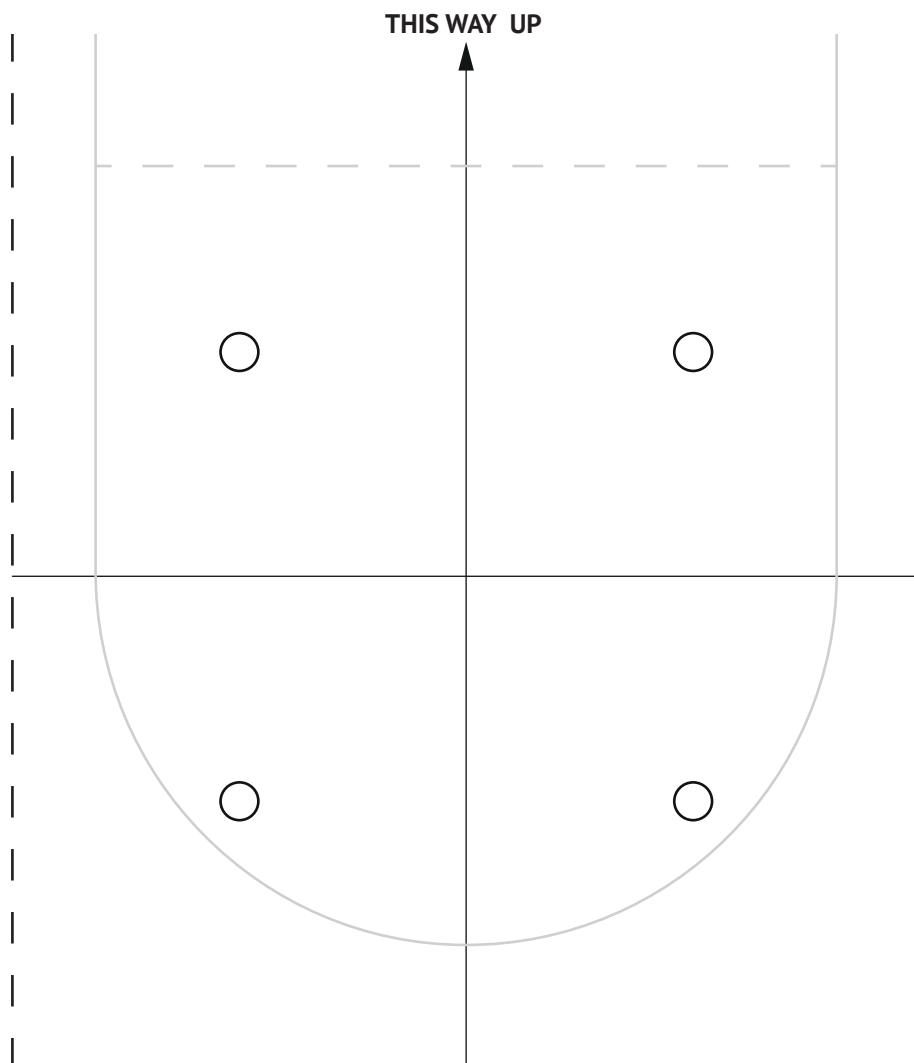


## Installation on Ladeeda pole:

1. Fold the mounting template on dashed lines & position on pole
2. Mark the mounting holes with a center pin
3. Drill holes on the pole with a metal drill Ø3
4. Mount the socket & cable holder with the 4 self tapping screws



fold on dashed lines for installation on a Ladeeda pole



fold on dashed lines for installation on a Ladeeda pole