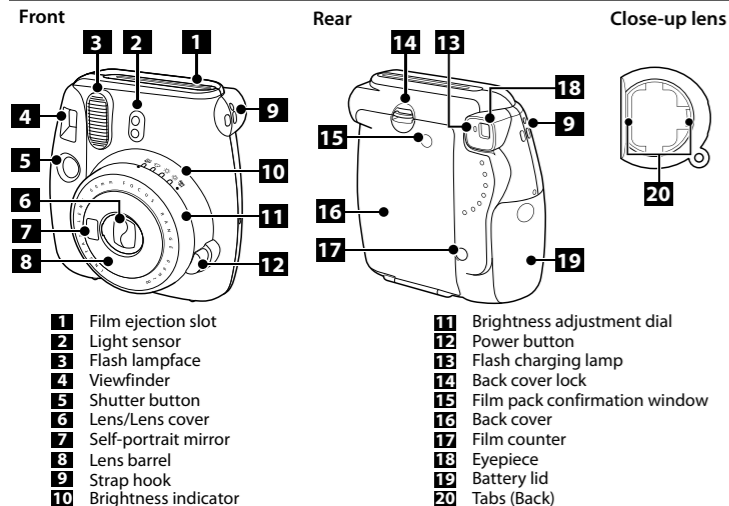


# FUJIFILM instax mini 9 INSTANT CAMERA

CPL10B112-101

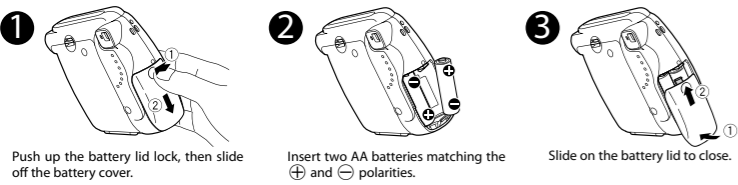
## Parts Name



## Inserting Batteries

### Caution

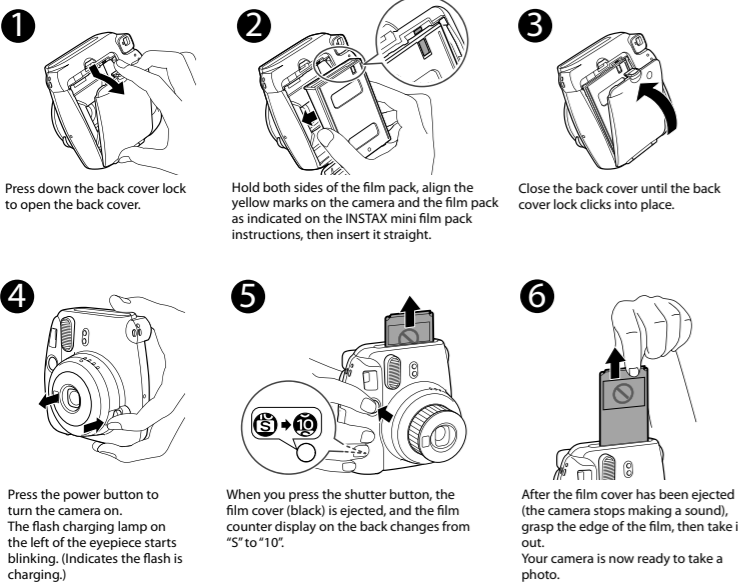
- Use new alkaline batteries of the same brand/type only (AA only).
- Do not use any batteries other than alkaline batteries.
- Replace both batteries in the following cases:
  - When the red lamp on viewfinder lights
  - When no lamp lights or blinks even though the power is turned on
- About 100 pictures (roughly 10 packs of INSTAX mini film) can be taken with new batteries.
- The battery performance may be reduced when it is cold. In this case, warm up the batteries to room temperature before using this camera.
- Use the supplied batteries for validation.



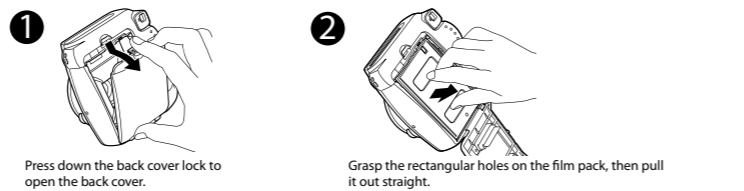
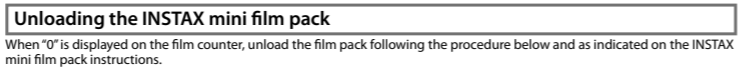
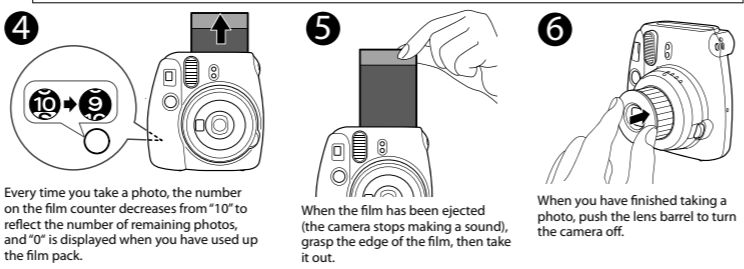
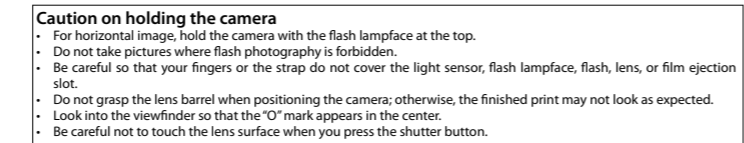
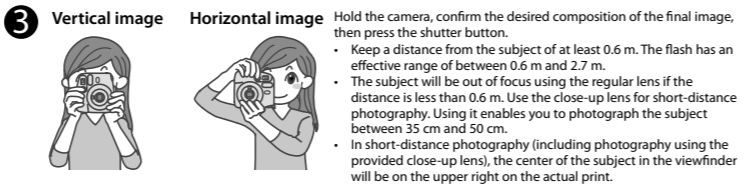
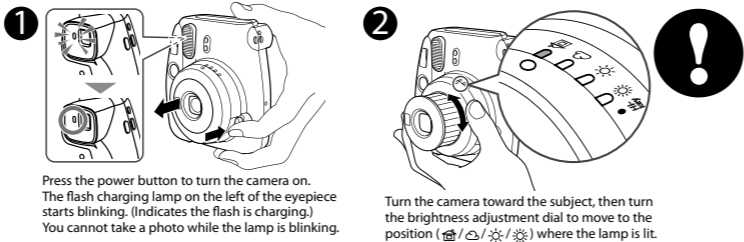
## Loading the INSTAX mini Film Pack

### Caution

- Make sure that the batteries are installed before loading the film pack.
- Avoid direct sunlight when loading the film pack.
- Do not use any film other than FUJIFILM INSTAX mini film.
- When you load the film pack, never press the two rectangular holes on the back.
- **Do not open the back cover until you have used up the film; otherwise, the rest of the film is exposed and turns white. The film can no longer be used.**
- Never use a film pack beyond its shelf life; otherwise, it may damage the camera.
- For details, refer to the instructions and warnings on FUJIFILM INSTAX mini film.

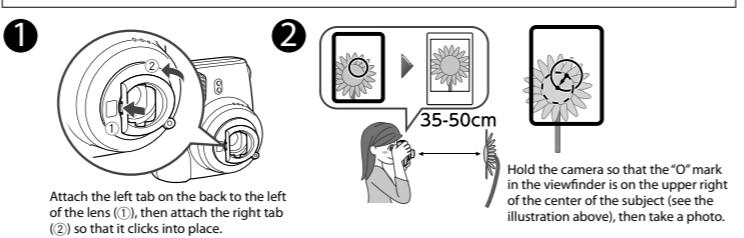
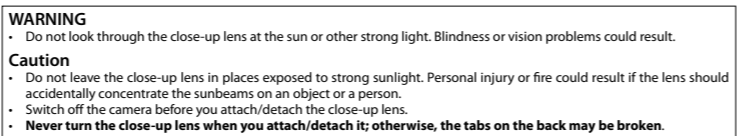


## [IMPORTANT] Taking Pictures

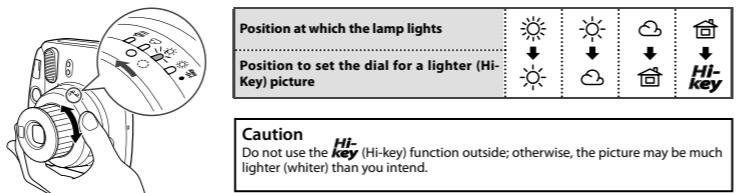
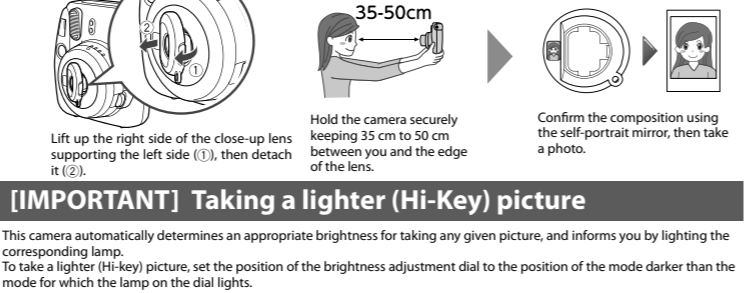


## Using the Close-Up Lens

You can photograph objects close-up, and can photograph yourself using the self-portrait mirror.



## [IMPORTANT] Taking a lighter (Hi-Key) picture



## SPECIFICATIONS

Film	FUJIFILM INSTAX mini film
Picture Size	62 mm × 46 mm
Lens	2 components, 2 elements, f=60 mm, 1:1.2.7
Viewfinder	Real image finder 0.37× with target spot
Shooting range	0.6 m and beyond
Shutter Speed	1/60 sec.
Exposure Control	Manual switching system (LED indicator in exposure meter)
Film Feeding Out	Automatic
Film Developing Time	Approximately 90 seconds (Varies depending on the ambient temperature)
Flash	Constant firing flash (automatic light adjustment) Recycle time: 0.2 sec. to 6 sec. (when using new batteries) Effective flash range: 0.6 m - 2.7 m
Power Supply	Two AA-size 1.5V alkaline batteries Capacity: 100 shots (Approximately 10 INSTAX mini 10-pack film packs with new AA batteries)
Auto power off time	5 min.
Others	Exposure counter (number of unexposed films), film pack confirmation window
Dimensions	116 mm × 118.3 mm × 68.2 mm
Weight	307 g (without batteries, strap and film pack)

\* Specifications are subject to change without notice.

## TROUBLE SHOOTING

Problems	Possible Causes	Solutions
The shutter release won't trip.	① The battery power is low. ② The batteries are not loaded correctly. ③ Power is not turned on. ④ Camera has remained idle for roughly 5 minutes with the power turned on.	① Replace the batteries with new ones. ② Load the batteries correctly. ③ Press the power button to turn on the power. ④ Press the power button after retracting the lens or press the shutter release button to restore the power-on state.
The lamp on the viewfinder blinks and the shutter release won't trip.	● Flash is charging.	● Wait until the lamp on the brightness adjustment dial is lit without blinking.
The film pack won't load into your camera, or won't load into your camera smoothly.	① The film pack is not for your camera. ② You are not loading the film pack correctly.	① Use FUJIFILM INSTAX mini film only. (No other films can be used.) ② Match the yellow line on the film pack with the yellow positioning mark in your camera. Follow the INSTAX mini film pack instructions.
All lamps on the brightness adjustment dial blink at the same time.	① The battery power is low, and it takes a long time to charge the flash. ② A more significant issue with your camera has occurred.	● Replace the batteries with new ones while the power is turned on (when the lens is extended). <b>IMPORTANT:</b> Replace the batteries only while the power is turned on. If you replace the batteries while the power is turned off (when the lens is retracted), on the brightness adjustment dial blink after turning on the power even with new batteries.  * When the problem is due to reason ①, the lamps on the brightness adjustment dial turn off after replacing the batteries. If the problem is due to reason ②, the lamps on the brightness adjustment dial blink even after replacing the batteries. In this case, turn off the power and remove the batteries immediately, then contact an authorized FUJIFILM repair center.
The red lamp on the viewfinder lights up.	● The battery power is low.	● Replace the batteries with new ones.

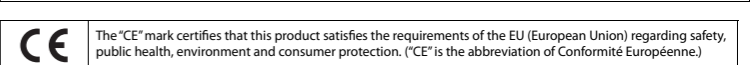
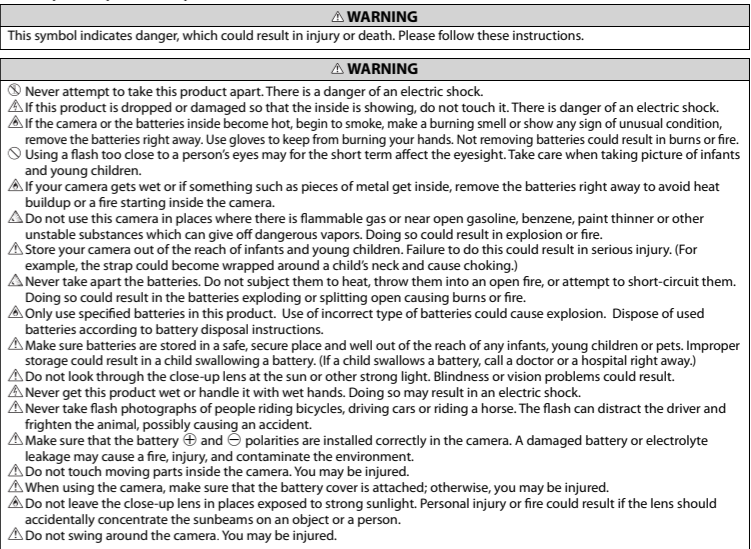
Problems	Possible Causes	Solutions
The finished print looks over exposed. (White in color)	① The method of measuring the subject brightness is unsuitable. ② Brightness adjustment dial setting is incorrect. ③ The ambient temperature is high (above +40°C/+104°F). ④ The background is too dark in comparison with the subject. ⑤ The light sensor or flash sensor window is blocked.	① Point the lens toward the center of the subject and measure the subject brightness. ② While pointing the lens toward the subject, turn the brightness adjustment dial to set the brightness to that for which the lamp lights. ③ Before taking pictures, place your camera in a warm place to bring it to room temperature. ④ Turn the brightness adjustment dial one step toward the ☁ direction. ⑤ When taking a picture, be careful not to cover the two small windows next to the flash on the camera.
The finished print looks under exposed. (Dark)	① The method of measuring the subject brightness is unsuitable. ② Brightness adjustment dial setting is incorrect. ③ The ambient temperature is high (above +40°C/+104°F). ④ The picture was taken with direct light in front of you. ⑤ The flash lampface was blocked. ⑥ The background is too bright in comparison with the subject. ⑦ The flash did not reach the subject. ⑧ The flash reflected back from a mirror or window glass. ⑨ Grasping the lens barrel did not let the shutter work properly.	① Point the lens toward the center of the subject and measure the subject brightness. ② While pointing the lens toward the subject, turn the brightness adjustment dial lamp lights. ③ Before taking pictures, place your camera in a cool place. When the picture comes out from your camera, keep it away from places or objects with excessively high temperature. ④ Take a picture with the light behind you, or turn the brightness adjustment dial one step toward the ☁ direction. ⑤ When holding your camera, be careful not to block the flash lampface with your finger or strap. ⑥ Turn the brightness adjustment dial one step toward the ☁ direction. ⑦ Take pictures within 0.6 m to 2.7 m from the subject. ⑧ Adjust your position in taking the picture away from the mirror or window glass. ⑨ Do not grasp the lens barrel when you take pictures.
The picture is out of focus.	① The shooting range is too close to the subject. ② The lens is not clean. ③ Your camera was shaken when taking pictures.	① Take pictures with a distance of at least 0.6 m between you and your subject. ② Clean the lens. ③ Hold your camera firmly and press the shutter release button gently.
The picture is blurred.	① Picture was not permitted to develop without touching, pressure being applied or other interference once it ejected from the camera. ② The picture did not come out smoothly.	① Do not press onto or fold the picture. ② Do not block the film exit with your finger.
The subject in the viewfinder has shifted in finished print.	● The shooting range is too close to the subject.	● Take pictures with a distance of at least 0.6 m between you and your subject.

Information for traceability in Europe	
Manufacturer:	FUJIFILM Corporation
Address, City:	7-3, Akasaka 9-Chome, Minato-ku, Tokyo
Country:	JAPAN
Authorized representative in Europe:	FUJIFILM EUROPE GMBH
Address, City:	Düsseldorf Heesenstrasse 31, 40549
Country:	Germany

Information for FUJIFILM in the United States	Information for FUJIFILM in Canada
FUJIFILM North America Corp. 200 Summit Lake Drive Valhalla, New York 10595, USA	FUJIFILM Canada Inc. 600 Suffolk Court, Mississauga, Ontario L5R 4G4

## IMPORTANT SAFETY NOTICE

This product has been designed with safety in mind, and to provide safe service when handled correctly and in accordance with the User's Guide and instructions. It is important that both the product and the INSTAX film are handled properly and used only to take pictures as instructed in this User's Guide and in the INSTAX mini film instructions. For your ease and safety, please follow what is written in this User's Guide. It is also a good idea to keep this User's Guide in a safe, easy to find place where you can refer to it if needed.



**For customers in Turkey:**  
EEE Complies with Directive.  
**For customers in the USA:**  
FCC Statement  
CAUTION

CAUTION  
For customers in Canada:  
Disposal of Electric and Electronic Equipment in Private Households  
Disposal of used Electrical & Electronic Equipment  
(Applicable in the European Union and other European countries with separate collection systems)

CAUTION  
COMMON SENSE CAMERA CARE  
CAMERA CARE  
INSTAX mini FILM AND PRINT CARE

