

PAIR UP

1



Press and hold button for **8 seconds**. Release. Lights will **flash blue/red**.

2

Enter your Bluetooth device settings and select JLab Studio 2.



GO AHEAD, PRESS THE BUTTON

1x Press ● 2x Press ●● Press Hold ●●●

VOLUME + ●	+	SWITCH EQ 3 sec both buttons
TRACK FORWARD ●●		
VOLUME - ●	-	
TRACK BACK ●●		
PLAY/PAUSE ●	○	
ANSWER/HANG UP ●		
REJECT CALL ● 1 sec		
POWER ● 3 sec		
BLUETOOTH PAIRING ● 8 sec		
SIRI/OK GOOGLE ●●		

DOWNLOAD THE MOBILE APP

Customize Studio 2 features and update the latest software.



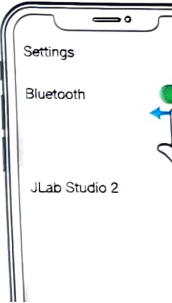
SCAN ME



GET CHARGE

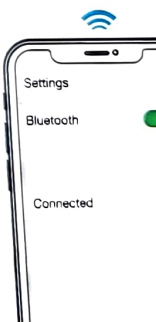
MULTIPOINT

1 Once **FIRST** device is turned off, Bluetooth Studio 2 will connect to the next device.



LabShare (s)

1 Connect FL to device.

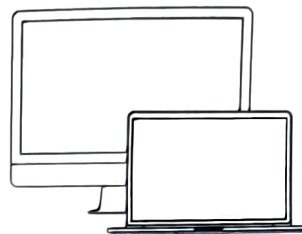
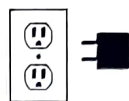
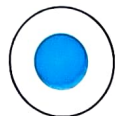


GET CHARGED

CHARGING



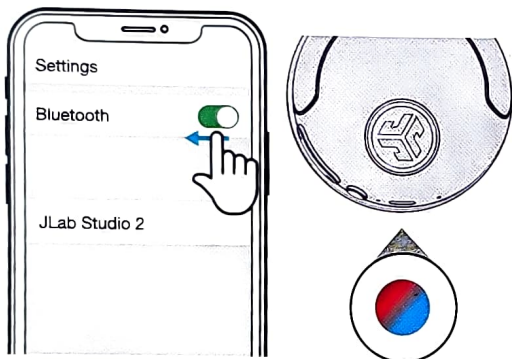
CHARGED



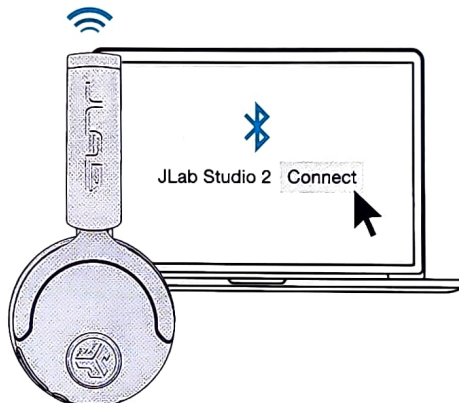
Connect to computer or 5V USB-C charger.

MULTIPOINT

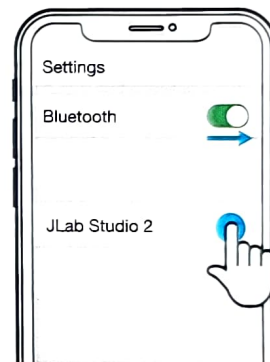
- 1 Once **FIRST** device is connected, turn off Bluetooth in device settings. Studio 2 will enter Bluetooth Pairing.



- 2 Enter your **SECOND** device Bluetooth settings and connect to Studio 2.



- 3 Enter **FIRST** device settings. Turn on Bluetooth and reconnect to Studio 2.



LabShare (Share between two Studio 2 headphones)

- 1 Connect **FIRST** headphone to device.



- 2 **SECOND** headphone should be powered off. Press hold until flashing blue/red.



- 3 Then **5x Press** and blinks blue.



- 4 **FIRST** headphone **5x Press** to share.

