

POLAR

POLAR
PACER PRO

ID: 13192400

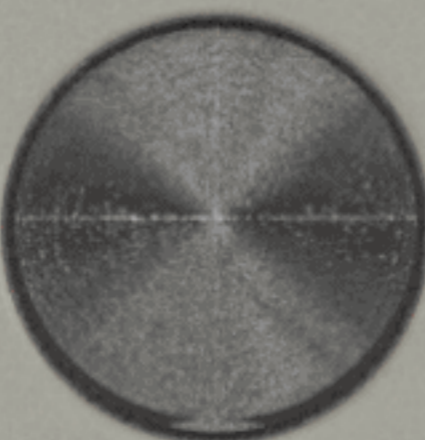
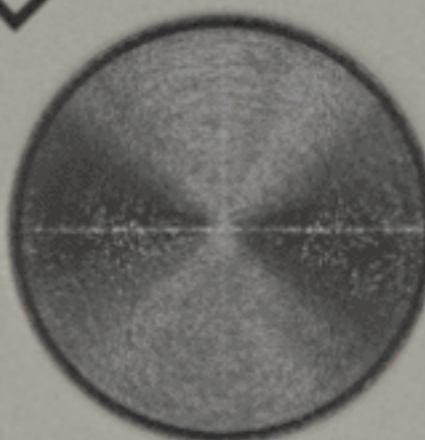
S/N 7004685302

The central sensor array consists of 10 LEDs and 5 sensors arranged in a grid. The LEDs are organized as follows:

- Top row: 2 LEDs (left yellow, right red)
- Second row: 1 sensor (black square)
- Third row: 4 LEDs (left two yellow, right two red)
- Fourth row: 1 sensor (black square)
- Fifth row: 2 LEDs (left red, right yellow)

MADE IN CHINA

SKN



WR 50M

