

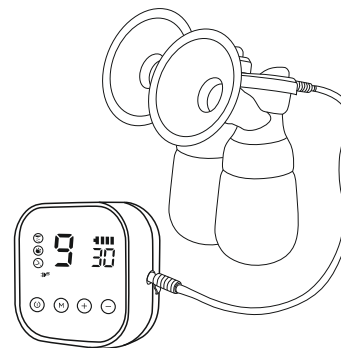
\* If there is any change in the content of the manual, the copyright of the final interpretation belongs to our company.

# ELECTRIC BREAST PUMP

Manual for use of electric breast pump

**RH-318**

Single bilateral universal



PLEASE READ THIS INSTRUCTION CAREFULLY BEFORE USING THE PRODUCT AND KEEP IT FOR FUTURE USE.

**Contents**

**CONTENTS**

Product introduction	/P01-02
Description of components	/P02
Installation instructions	/P03-04
Description of components	/P04-06
Troubleshooting	/P06
Maintenance	/P06
Matters needing attention	/P07
Statement of conformity	/P07
Hazardous substance declaration	/P08
After-sales service	/P09

**After-sales Service**

Thank you for using our products, your products enjoy one year warranty service from the date of purchase.

When applying for a warranty, the warranty card or original proof of purchase is required.

This warranty does not apply to the following conditions:

A. The damage caused by improper use such as disassembly and refitting without permission.

B. After the purchase of transportation movement, fall and other failures and damage

C. Discoloration due to natural aging of components.

D. Product damage due to improper maintenance (e.g. temperature, soaking, extrusion, etc.).

E. Damaged by improper use

F. Damage caused by using parts that are not manufactured or sold by our company.

G. Failing to show valid invoices or sales vouchers.

This warranty card is only one copy, please be sure to take care of it in case of loss.

If you have any product problems during use, please call our after-sale service number: 400-962-1858.



Warranty Card (saved by the customer)

Model		The customer name	
The product name		Contact	
Purchase date		Fault description	

## Attentions

1. Before use, remove all packaging of this product, check the complete parts against the product specification
2. This product is a personal special product, do not use many people, lest affect health
3. When cleaning this product, please pull the adapter out of the power outlet, do not use bleach, chemical disinfection solution, tablets, corduroy, abrasive cleaner or corrosive liquid (such as gasoline, acetone or alcohol) to clean this product.
4. When removing or installing all kinds of components, such as three links, silicone horn, bell mouth, silicone cylinder, duckbill valve and so on, we should be careful to operate, do not force too hard
5. Cylinder head can not be washed with water, cleaning such as water, dry water drop, dry rear can be used
6. In use, the hose must be clean without water droplets, otherwise it will affect the performance of the main engine.
7. It is recommended to use special steam or boiled water to disinfect the accessories that need to be disinfected. It is not allowed to use disinfected cupboards, microwave oven or pressure cookers to heat and disinfect the accessories. The host machine is not allowed to enter the water for cleaning
8. Packaging and all components and mainframe are not toys. Keep out of reach of children.
9. Store in a cool and dry place, away from direct sunlight, away from fire and heat source
10. When it is difficult to suck milk, you should relax your body and then suck milk. When the swelling milk pain, should be hot compress massage; Consult your doctor if you feel uncomfortable or cannot pump milk for many times
11. If parts are damaged, to avoid danger, please stop using and send them to our service center for maintenance. Do not use accessories or parts produced by other manufacturer or without our permission to avoid danger.

## Declaration Of Conformity

This product meets the requirements of the corresponding national food safety standards. The compliance information of "food contact" materials and implementation standards is as follows

Part name	Material	Implement standard	Temperature resistance
Three links . Cylinder head . Dirt shroud . Wide bottle of 180ml . Bottle cover	PP	GB 4806.7-2016	-10~100 ° C
Silicone speaker . Silicone cylinder . Nipple (of a feeding bottle) . Duckbill valve	Silica gel	GB 4806.11-2016	-10~180 ° C

## Product Information

### Product information

Model: RH-318

Product name: electric breast pump

Number: 1 set

Main materials: ABS, The silicone, PP

### Technical parameters

Charging input voltage: 5V

The lithium battery: 3.7V --- 1500mAh

Power rating: 5W

Noise limit: ≤60dB(A)

Motor protection: II

Conditions of use: 5°C~40°C, 10%~90%RH

### Functional features

#### Product features

1. Automatic simulation: Controlled by a microchip program, it imitates the intermittent breastfeeding of infants.
2. In galactagogue mode, the intensity can be adjusted to 9 levels. In the massage mode, the intensity can be adjusted in 9 levels to effectively massage the breast; In the breast sucking/Bionics mode, the intensity can be adjusted in 9 levels, which imitates the speed of the infant's sucking rhythm and the size of the infant's sucking volume.

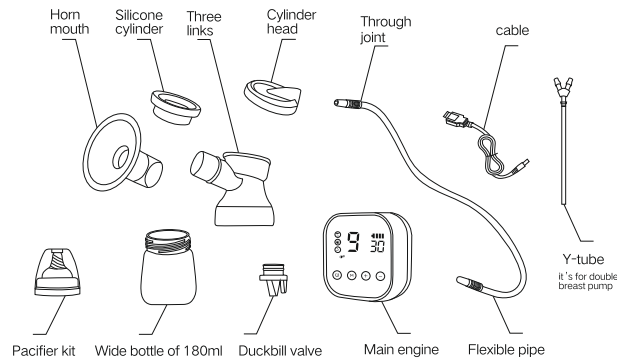
#### Product features

- 1.The cylinder design with gas-liquid separation structure, no milk return when sucking.
- 2.The removable liquid silicone horn imitates the principle of ergonomics. It can suck and massage, squeeze the breast and stimulate lactation when sucking.
3. Touch design of control panel, interface display, clear operation process.
4. The mainframe has built-in battery, which can be easily used when power is off or when going out or at home.

#### Parts Introduction

Part name	Quantity	Material	Part name	Quantity	Material
Horn mouth	2	Silica gel+PP	Silicone cylinder	2	Silica gel
Three links	2	PP	Cylinder head	2	PP
Through joint	4	PP/TPR	Flexible pipe	2	Silica gel
cable	1	/	Duckbill valve	2	Silica gel
Main engine	1	/	Pacifier kit	2	Silica gel+PP
Wide bottle of 180ml	2	PP	Y-tube	1	Silica gel+PP

Below parts for single bottle breast pump only with 1 piece



Note: please check that the parts are complete before using.

- When shut down, the power adapter can charge the battery; after full charge, it can work continuously for more than 1 hour.
- When the power is too low, the host automatically stops working and prompts to protect the battery; when the power is full automatically stops charging to avoid damage to the battery.

#### Malfunction Analysis

The following problems may occur during milk absorption, please refer to the method provided.

Phenomenon	Analysis of causes	Processing method
Small suction	The connection is in the airleakage (duckbill valve, siliconehorn, direct heac three-way and main engine), the main engine output air path is blocked, such as hose folding, hose airway debris	Check the connection parts and reinstall, clean and clean again.
No suction	Duckbill valve not installed or deformed Misuse of plastic components to disinfect cupboards,microwave ovens and pressure cookers, resulting in deformation and damage	Install platypus valves or renew fittings
No suction	The adapter is not connected to the charging socket or mainframe socket.Lithium batteries are running out	Re-plug the adapter of Charge it before using it
No power on	Find milk or water entering the cylinder or hose to check if the cylinder is damaged or not installed	Stop immediately, clean or replace the cylinder and reinstall

#### Maintenance

- Battery is built-in non-detachable do not disassemble
- Host or battery charging or power supply requires a specified DC5V power adapter or mobile phone power adapter.
- Do not use other non-standard power adapters to charge or power
- Do not approach the high temperature or fire source during the use and placement of the not place mainframe in heater or fire source to avoid combustion and explosion
- When the host is not used for a long time, it is recommended to charge once a month.
- If there is a failure in the mainframe, please do not disassemble and repair it. It must be sent to the designated maintenance point of our company for repair or replacement by professional personnel.
- Before use, the accessories directly in contact with breast milk (bottle, silicone horn, three way, cylinder, duck mouth valve, milk bottle cap) should be cleaned and disinfected in advance, can be sterilized by steam or hot water, and the disinfection time should not exceed 1 minute
- The host can't put it in water

#### Frequency regulation of suckling strength

- "Breast" mode, touch+and - can adjust the strength of milk, a total of 9
- "Massage" mode, press+and - can adjust the intensity of prolaction, a total of 9 stalls.
- "suckling" mode, by+and-can adjust the strength of suckling, a total of 9 stalls.
- "Bionics" mode, by+and-can adjust the strength of suckling, a total of 9 stalls.

At work, pressing the M key can freely switch the working mode. When switching to "prolactin" mode, the default is the last gear used; when switching to "suckling" mode, the default is the last gear used.

#### Suspension function

- Press pause mode, machine tentative, press open again, shut down can not open.

#### Memory function

- Start prolactin, massage suckling mode, adjust the required gear run for more than 3 seconds it will automatically remember. The next startup will start the above run gear.

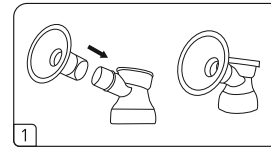
#### Battery power, charging

- In the working state, the power adapter is connected and supplied by the power adapter. When the power adapter is not connected, the host will automatically use the built-in battery to supplied power.

#### Installation Instructions

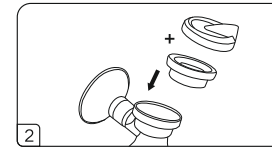
Warm Tip : before each use, should be pre-sterilized with breast milk has direct contact with the components: bottle, silicone horn, three-way silicone cylinder, duck mouth valve.

#### milk bottle cap and so on

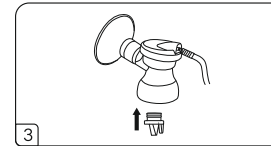


1. Insert the silicone horn and bell mouth assembly into the three links to ensure that the sleeve is tight

( Note: when removing, one hand holds the three links, the other hand holds the bell mouth assembly up and woen, gently pull out.)



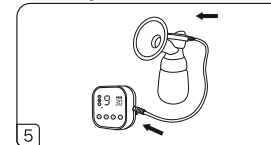
2. Put the cylinder and cylinder head into three links and tighten the cylinder head.



3. Put the duckbill valve into the bottom outlet of the three-way to ensure that there is no leakage.



4. Screw the three-way assembly into the bottle.



5. Insert the straight-through joint of the hose into the cylinder head and the relative hole position of the main engine to ensure that there is no air leakage and can be used.

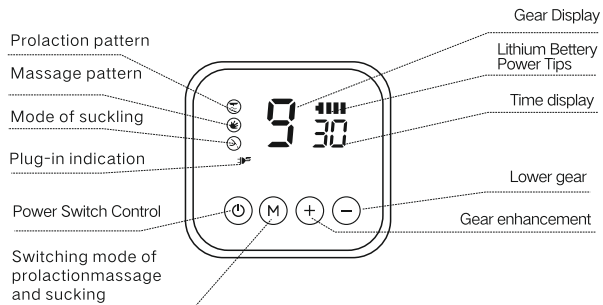
Note: the through joint should be opened before insertion into the main airway hole; do not start the main engine work without opening the dust shield, otherwise it will affect the service life of the main engine.

## How to Use

### Ready for use

- Before use, check and ensure that the sterilized parts(parts in direct contact with breast milk)are clean and water free, and the absorber is firmly connected to the mainframe.
- Clean, compress and massage breasts and areola with wet and hot towels before sucking. Relax your body to relieve the pain of bulging milk.

### Panel operating instructions



### Boot mode switch

- Touch "⏻" for 2 seconds and enter prolactin mode by default.
- After boot can carry on prolactin, massage, suckling mode switch.

### Screen display

- When the working mode is prolactin, ☺ light is on; when the working mode is "massage", the ☹ light is on; when the ☺ is on, it is working mode; when the x is on, it means shutdown
- When "prolactin" mode, the intensity can be divided into 9 files, the screen will also display the corresponding number.
- "Massage" mode, there are 9 stalls, the screen will display the corresponding number. In suckling mode, there are nine stalls and the screen displays the corresponding numbers
- When supplied by the built-in battery, the on the LED screen is a static display of electricity; when supplied by the charging line, the battery charging state will be dynamically displayed in the shutdown state
- When the battery power drops to the lowest, the right side of the battery symbol flashes, the other three are not bright, and the LED screen goes out after 10 seconds.