



RECHARGEABLE HEADLIGHT

AMPP800

HL-EL088RC

Manual

Lithium
3.7V

Before using the light, read this manual thoroughly and keep it for future reference.

Design Pat. Pending
Copyright © 2013 CATEYE Co., Ltd.
HL-EL088-0001 1

FlexTight™ bracket
(H-34N)USB cable
(MICRO USB)**1 Before Initial Use**

This unit is shipped with small charge to check the light. Be sure to charge it before use, according to the instructions "HOW TO CHARGE" and "Cautions on recharging".

WARNING!!!

- Be sure to direct the light beam downward so approaching car or pedestrian are not dazzled.
- Before your trip, please make sure the light is firmly mounted to the bracket and it lights up.
- Always pay attention to the remaining battery power by checking the indicator periodically while using the light.

CAUTION!

- Keep the light away from children.
- Mounting the light unit too close to a wireless computer may adversely affect the reading of the computer.
- In preparation for unexpected shutoff, we recommend you carry a spare light.
- This product is water-resistant under normal daily use and can be used in the rain. However, do not intentionally submerge it in water.
- If the light unit or parts become dirty with mud, etc., clean with a soft cloth which is moistened with mild soap. Never apply paint thinner, benzene or alcohol; damage will result.

LITHIUM-ION BATTERIES**Cautions on recharging**

- Avoid charging in direct sunlight or in a vehicle parked under direct sunlight, and make sure to charge only when the ambient temperature is between 41°F and 104°F (5 and 40°C).
- Before charging, be sure that no dust or other foreign objects are attached to the USB plug.
- Do not subject the light to vibrations while charging.
- Once charging is complete, be sure to disconnect the USB plug.

Cautions in use

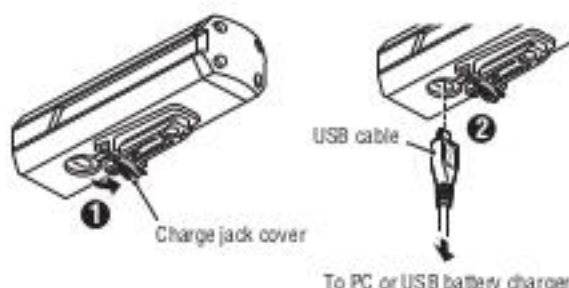
- Charging, discharging, and storing in high temperatures will cause the rechargeable battery to deteriorate faster.
- Do not place the light inside a vehicle or near a heater.
- If the illumination time is significantly reduced even after proper charging, the rechargeable battery may be nearing the end of its service life. Dispose of the battery as described in "Cautions for disposal".

Cautions on storage

Cool and dry storage is recommended. For long period storage, it is important to charge the battery 30 minutes every 6 months.

Cautions for dispose

When disposing of the light unit, remove the internal rechargeable battery and dispose of it according to local regulations.

1 HOW TO CHARGE

Indicator		
	Steady red light	Charging
	Off	Charging is completed
Standard charging time		
Approx. 3-7h (USB 2.0)		

1. Connect the light unit to your PC or a commercial USB battery charger using the USB cable. (Fig 1 ①-②).

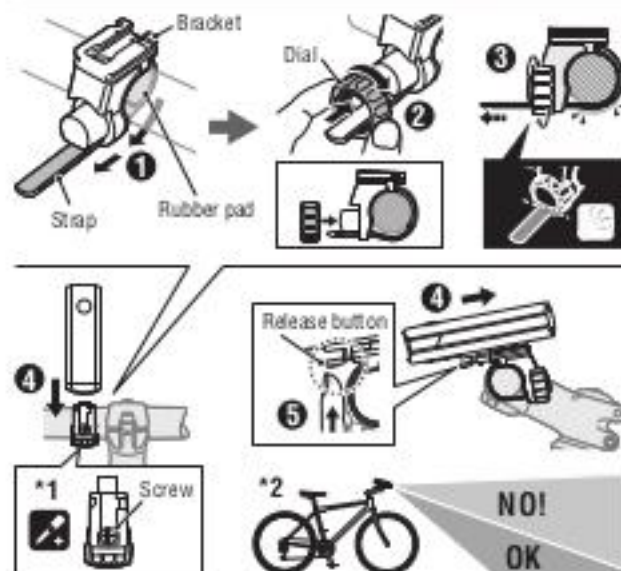
The indicator turns on and charging starts.

* When your PC is in sleep state, the unit cannot be charged.

* Use a USB battery charger of 500 mAh (USB2.0) or more. The light can be fast-charged with a high capacity USB battery charger.

2. Once charging is complete, be sure to disconnect the USB plug.

* Charging and lighting times are approximate values, and will vary by environmental and use conditions.

2 HOW TO MOUNT TO A BICYCLE

1. Mount the bracket to the handlebar. (Fig 2 ①-③)

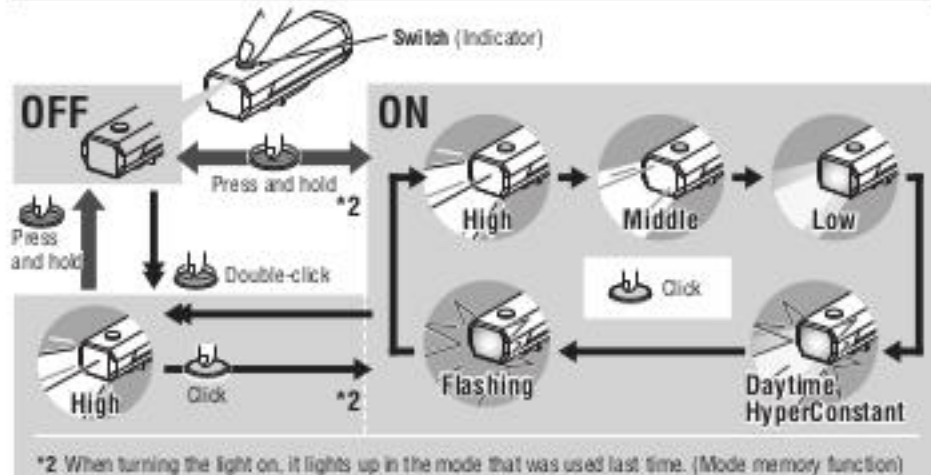
2. Insert the light unit into the bracket until it clicks, and adjust the beam angle. (④) (*2)

3. To remove the light unit, pull it forward while pressing down on the release button (⑤).

* To readjust the beam angle, loosen the dial and/or the screw enough to move the bracket, and firmly tighten them after adjustment.

CAUTION!

- Be sure to tighten the dial by hand. If tightened too hard with a tool, the screw thread may be stripped.
- Check the dial and screw (*1) on the bracket periodically, to monitor for any loosening.
- Round off the cut edge of the bracket strap to prevent injury.

3 SWITCH OPERATION**Remaining battery capacity:**

When the switch is illuminated in red, there is little remaining battery power.

Indicator	Constant blue light	Constant yellow light	Constant red light
Remaining battery power	Approx. 50% or more	Approx. 50-30%	Less than Approx. 30%