



# FAST WALL CHARGER

## Compact Size

Small body however with high output. Easy for carriage.

## Voltage Range

100-240V voltage applies to different countries and areas.

## Cooling System

Aluminum sheet + copper sheet cooling system, which is with long service life, good thermal conductivity and high heat-dissipation efficiency.

## Quality Certificates

Passed CE, FCC safety standard and can prevent accident like short circuit, leakage and over-voltage.

## Specification

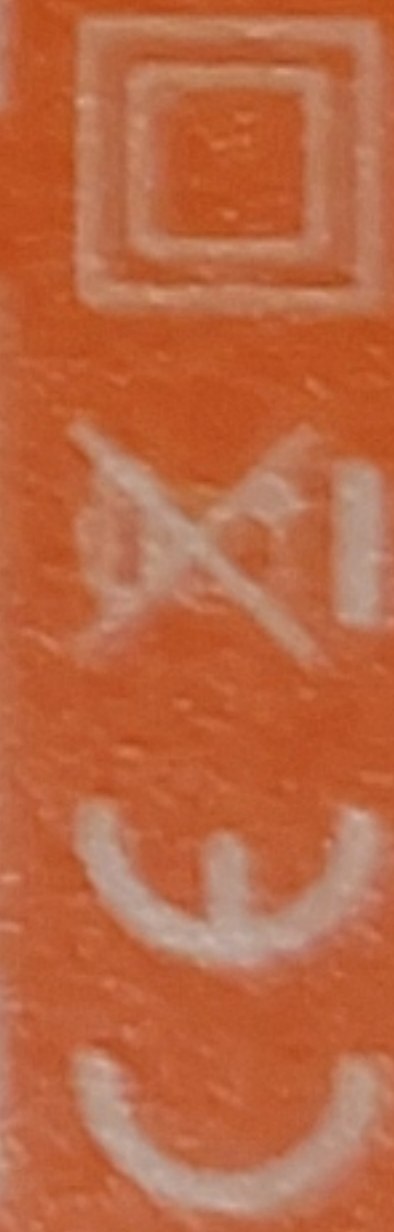
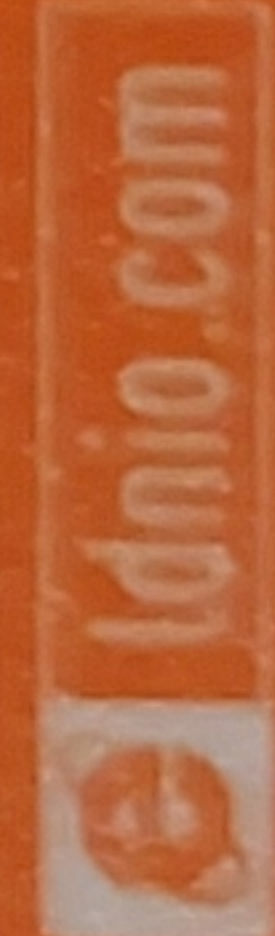
Input: AC100-240V 50-60Hz  
Output: 3.6V  $\approx$  3A 6V-9V  $\approx$  2A 9V-12V  $\approx$  1.5A  
Output Power: 18W  
Color: White

## TURBO POWER ENGINE :

Intelligently identifies your device to deliver the fastest possible charge.



TURBO  
POWER ENGINE



MADE IN CHINA  
SIZE: 145X85X35MM

MANUFACTURER